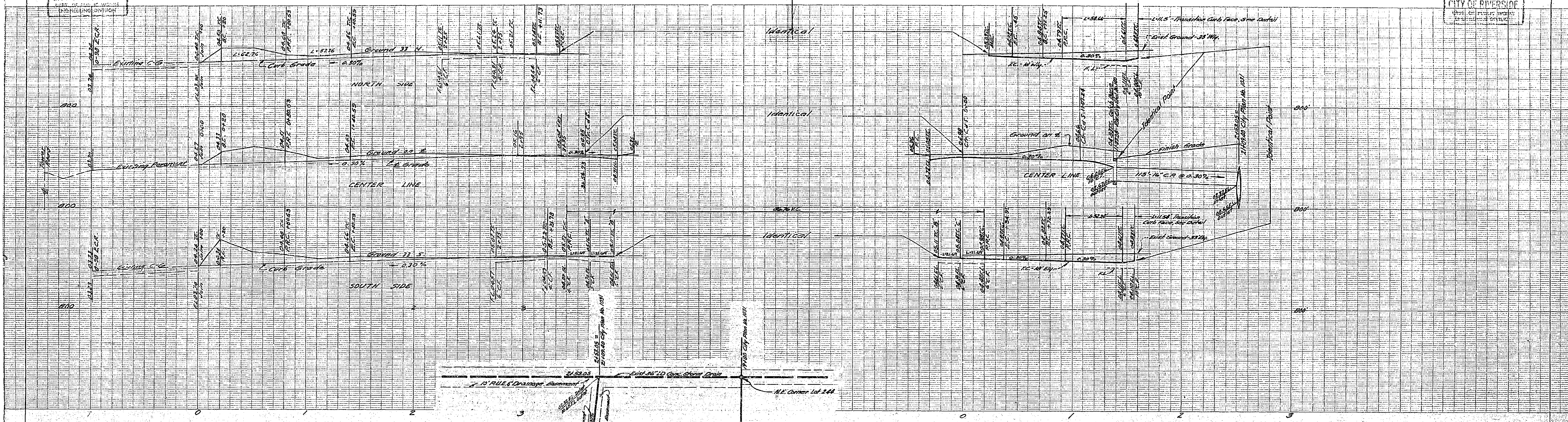


CITY OF RIVERSIDE
Engineering Division

UNIVERSITY OF CALIFORNIA
RIVERSIDE
REVISIONS

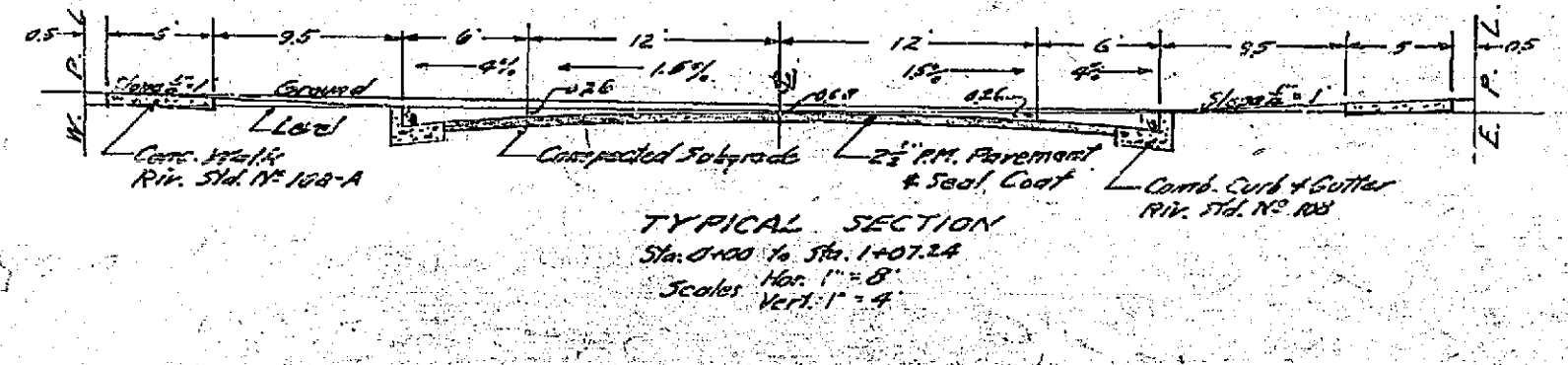
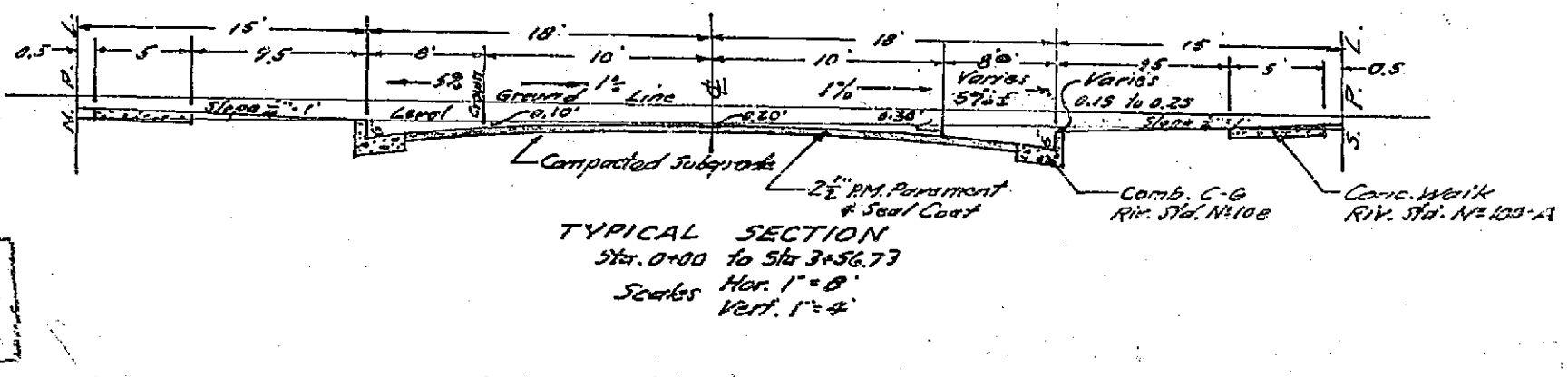
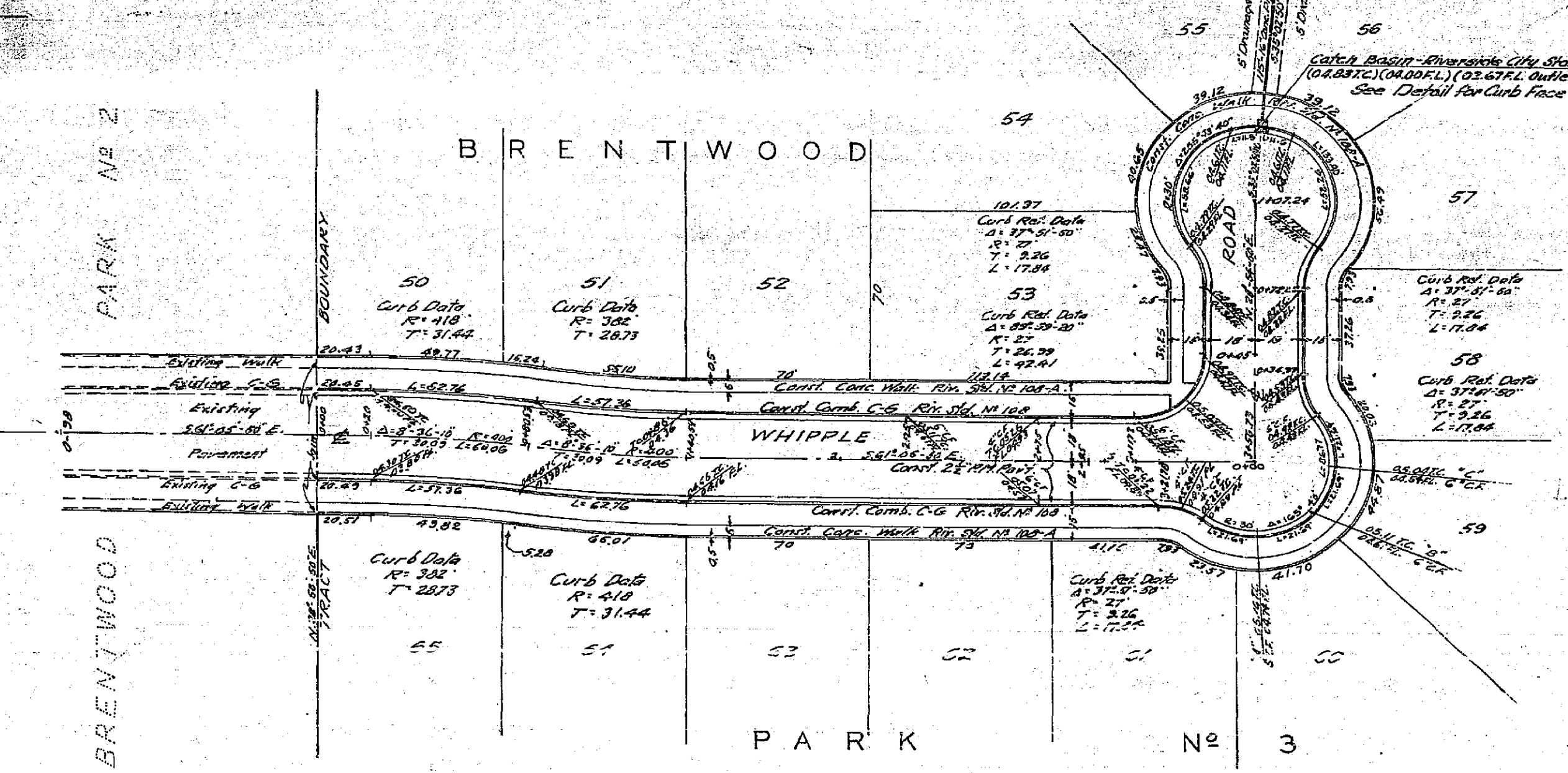
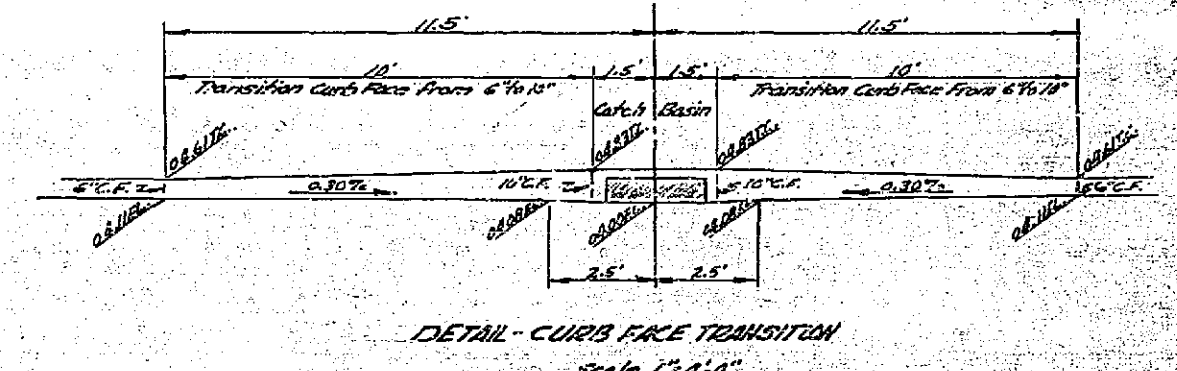
CITY OF RIVERSIDE
Engineering Division

PROPERTY OF
CITY OF RIVERSIDE
Street Engineering Division
1250 UNIVERSITY AVENUE



CURVE DEFLECTION ANGLES
 R of 0+20 - E.S. on Int. Tower Road
 0+50 Def: 4°-18' Ch. = 23.39
 0+75 " 7°-32' " " 24.38
 R of 1+40.57 - E.S. on 34+56.73
 1+25 Def: 2°-14' Ch. = 15.53
 1+00 " 5°-48' " " 40.57
 Ch. for 25° Arc = 24.99

ESTIMATE OF QUANTITIES
 1032.42 lin. ft. Comb. Curb & Gutter
 15106 sq. ft. 2 1/2" P.M. Pavement
 5395 Concrete Walk.



REVISION: Revised Street Grades and added Conc. Drain Line. Date: Jan. 29, 1950.
 Approved by: *S.M. Lusk* Date: 1/29/50
 Director of Public Works
 REVISION: Revised Street Grades from levels and Date: Feb. 6, 1950.
 Approved by: *S.M. Lusk* Date: 2/6/50
 Director of Public Works

J.F. DAVIDSON - CIVIL ENGINEER
 R.E. No. 882
 RIVERSIDE, CALIFORNIA
 APPROVED BY: *J.F. Davidson* DATE: 2/25/50
CITY OF RIVERSIDE, CALIFORNIA
DEPARTMENT OF PUBLIC WORKS
STREET PLAN & PROFILE
WHIPPLE ROAD
BRENTWOOD PARK No. 3
 HORIZ. SCALE 1"=40' VERT. SCALE 1"=4'
 APPROVED BY: *S.M. Lusk* DATE: Aug 14, 1957
 Director of Public Works
NO. R-139
 SHEET 1 OF 1

PROPERTY OF
CITY OF RIVERSIDE
Dept. of Public Works
Engineering Division

PROPERTY OF
CITY OF RIVERSIDE
Engineering Division