

710

710

710

710

710

710

249

250

251

252

253

L A S I E R R A A V E.

M A G N O L I A

A V E N U E

T.I. = 7 R.40
TYPICAL SECTION
MAGNOLIA AVENUE
NO SCALE

SPECIAL NOTE
Magnolia Avenue improvements will not be constructed until the 60" R.C.P. storm drain is in service. If early construction is required these plans must be revised to provide temporary drainage.

- GENERAL NOTES**
- All construction to comply with the latest revision of the City of Riverside Public Utilities Department Street Light Specification #112.
 - All street light standards shall be checked for clearance of driveway, fire hydrant, and utility returns.
 - Excavation for street light standard bases, pullboxes, and conduits shall be done after installation of curbs and gutters, but before installation of sidewalks.
 - Contractor to obtain a Street Opening Permit from City of Riverside Public Works Department prior to any excavation. In proposed or indicated street light or utility lighting Public Works Dept. 24 hours advance of any backfilling operations.
 - This is a two-way 210 volt multiple system, except as noted.
 - All cable to be 750 No. 4 except as specified in specifications #112.
 - Two points to be confirmed at time of construction.
 - Standard to be type and completed as specified in the standard specifications for Public Works construction, 1970 Edition and all supplements thereto.
 - City of Riverside to connect street light cables to electric distribution cables.
 - Install a waterproof "in line" fire holder in both branch conduits in the base of each street light standard. Fire holder to be Raychem #HEB-25 or equal; wire with a "Duro" FIM Stamp 250 will not be approved equal.
 - Concrete for street light foundations shall be 4.3 sack mix, 3027 P.S.I., CR No. 4001 per City of Riverside UGS-015.
 - See City of Riverside Div. No. LI-1301 for Light Standard Details, Div. No. LI-1303 for Pullbox Details, and Div. No. LI-1324 for Street Details.
 - \$ 173⁰⁰ Connection and inspection fees to be paid 30-15-69 (Note Detail).
 - Indicates City of Riverside markable light standard No. 2410 with 2400L, 400W, type III "Line Material" Treasury items. Inventory with National Photographic Acceptance and control will be UMS242 or approved equal.
 - Indicates pullbox "Bright Products Inc." No. 312 or "Quikset #2017" or approved equal.
 - Indicates pullbox "Bright Products Inc." No. 5 or "Quikset #2022" or approved equal.
 - Indicates 1 1/2" rigid galv. steel conduit, except as noted.
 - Indicates wood pole.
 - Indicates that a street light to be installed by City of Riverside upon payment of Mast Arm Fee by Developer.

QUANTITY ESTIMATE

Curb & Gutter Standard No. 200 (C.C.R.)	1,340 L.F.
A.C. Paving	24,268 S.F.
Sidewalk Standard No. 325	8,279 S.F.
Driveway Approach Standard 332	1 E.A.
Cross Gutter Standard No. 220	2,978 S.F.
Curb Only B-3 Standard No. 201	1,303 L.F.
A.C. Berm Standard No. 250	9 L.F.
A.C. Overlay	26 Ton
Plan Relocation	7 E.A.
Tree Removal	11 E.A.
Street Lights	7 E.A.
Catch Basin Standard No. 406	2 E.A.
60" R.C.P. 15000	204 L.F.
60" R.C.P. 15000 in 15' Footnote	204 L.F.
Outlet Structure Standard No. 410	1 E.A.
Conc. Headwall	1 X E.A.
Junction Structure B Standard No. 421	3 E.A.
18" Conc. Pipe	100 L.F.
30" R.C.P. 15000	30 L.F.
W-60-R	6 E.A.
2"x4" Redwood Header	80 L.F.

NOTE (PUMP RELOCATION)

Pumps to be relocated to the Park and Recreation Dept. Specifications and placed between basket sidewalk and 2' as shown on these plans.

NOTE (PUMP RELOCATION)

3/4" Galv. water service pipe
2" min. cover

Approved By: *David Campbell*
Chief Engineer
6-29-70
GENERAL REVISIONS
Date: 7-8-69

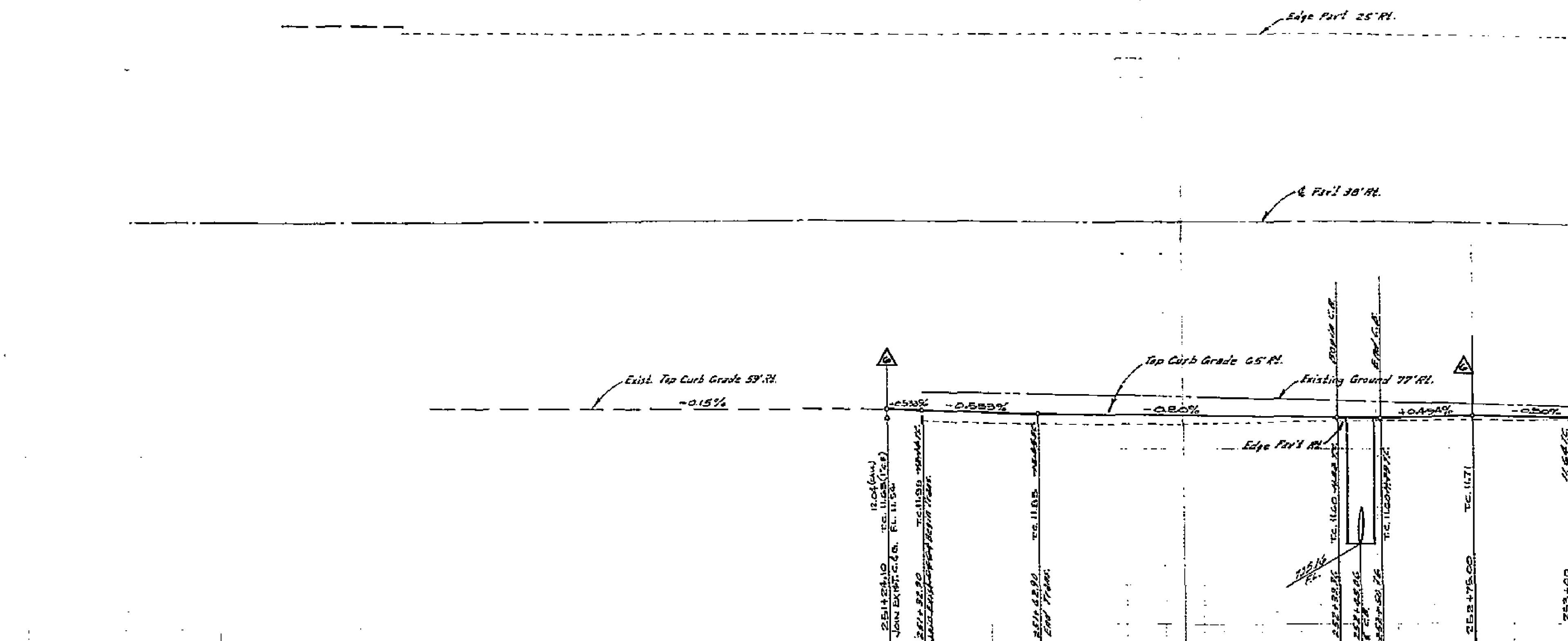
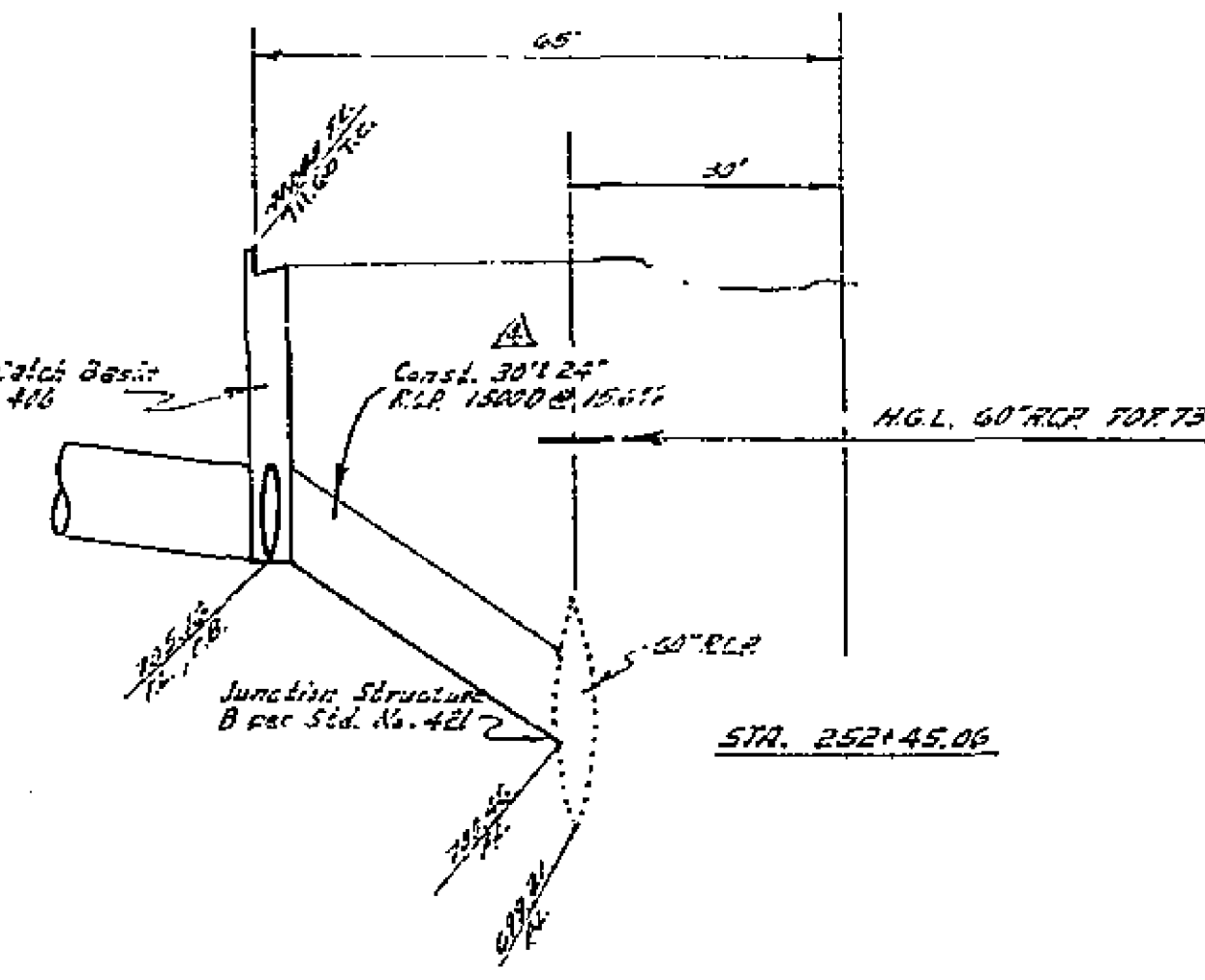
ALBERT A. WEBB ASSOCIATES
CIVIL ENGINEERS
RIVERSIDE, CALIFORNIA
APPROVED BY: *Ernest N. Webb* DATE 5/2/69
R.E. NO. 9876

NO.	REVISIONS	DATE
1	REVISED CURB AND GUTTER ELEVATIONS TO 60" R.C.P. 15000	5/2/69
2	REVISED SIDEWALK ELEVATIONS TO 60" R.C.P. 15000	5/2/69
3	ADD 3/4" PIPE RELOCATION	5/2/69
4	REVISIONS TO CONDUIT TO END OF APPROVED	5/2/69
5	REVISIONS TO CURB TO END OF APPROVED	5/2/69
6	REVISIONS TO CURB TO END OF APPROVED	5/2/69
7	REVISIONS TO CURB TO END OF APPROVED	5/2/69
8	REVISIONS TO CURB TO END OF APPROVED	5/2/69
9	REVISIONS TO CURB TO END OF APPROVED	5/2/69
10	REVISIONS TO CURB TO END OF APPROVED	5/2/69

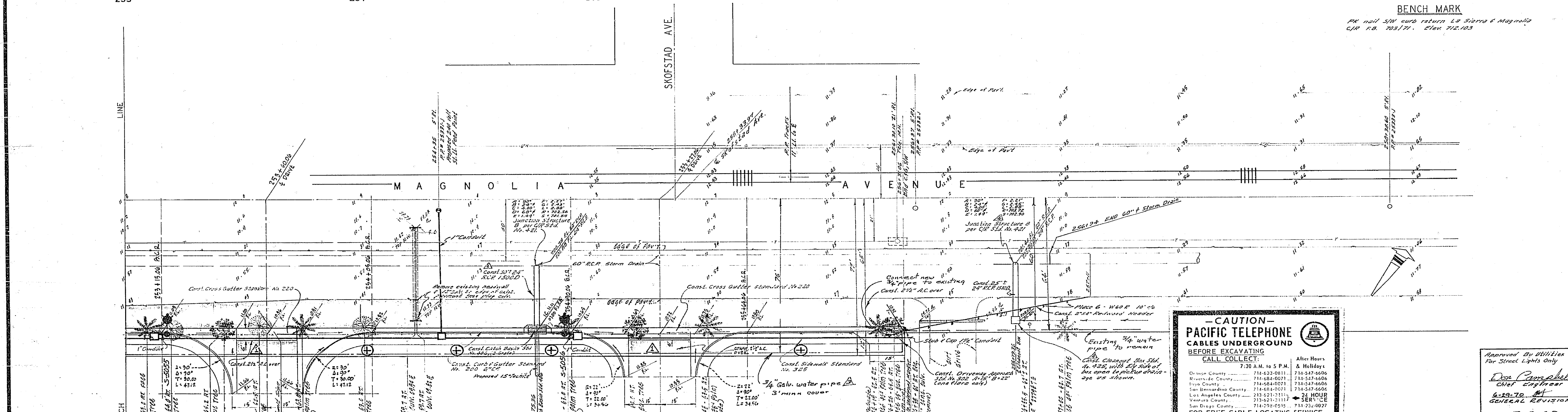
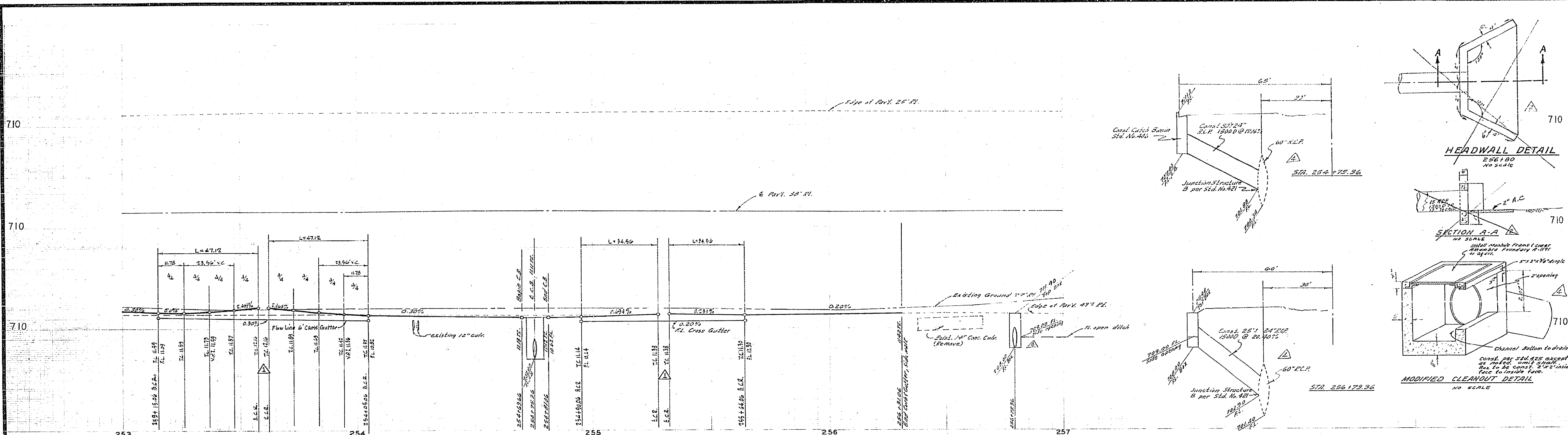
CITY OF RIVERSIDE, CALIFORNIA
DEPARTMENT OF PUBLIC WORKS
APPROVED BY: *W. G. R.* DATE 1/5/70
OFFICE ENGINEER
TRAFFIC DIVISION
ASSISTANT CITY ENGINEER

STREET PLAN & PROFILE
MAGNOLIA AVENUE
R/S NO. 1059
HORIZ. SCALE: 1" = 20'
VERT. SCALE: 1" = 4'

PROJECT NO.
R-1396
15-13372
SHEET 1 OF 4
FILE NO. 66-304-A



NOTE TO CONTRACTOR:
The existence and location of any utility lines shown on these plans is as a guide only. The contractor shall be responsible for locating and marking all utility lines before any excavation is started. No excavation shall be started until all utility lines have been located and marked. The contractor shall be responsible for protecting all utility lines during construction.



NOTICE TO CONTRACTOR

The existence and location of all utilities shown on this plan and profile are based on the records of the City of Riverside and on the field location of existing utilities.

The Contractor is responsible for locating and marking all utilities to be protected or disturbed by the proposed work.

The Contractor is responsible for providing the utility with the necessary protection and support during the construction of the proposed work.

The Contractor is responsible for providing the utility with the necessary support and protection during the construction of the proposed work.

ALBERT A. WEBB ASSOCIATES
 CIVIL ENGINEERS
 RIVERSIDE, CALIFORNIA

APPROVED BY: *[Signature]* DATE: 5/27/69
 R.L. NO. 9876

DESIGNED BY: *[Signature]* DRAWN BY: *[Signature]* CHECKED BY: *[Signature]*

CITY OF RIVERSIDE, CALIFORNIA
 DEPARTMENT OF PUBLIC WORKS

APPROVED BY: *[Signature]* DATE: 1/15/70
 DIRECTOR OF PUBLIC WORKS

STREET PLAN & PROFILE
 MAGNOLIA AVENUE

R/S NO. 1059

HORIZ. SCALE: 1" = 20' VERT. SCALE: 1" = 4'

PROJECT NO. **R-1396**
 SHEET **2** OF **4**
 FILE NO. **66-304-A**

CAUTION - PACIFIC TELEPHONE CABLES UNDERGROUND BEFORE EXCAVATING

CALL COLLECT: 7:30 A.M. to 5 P.M. After Hours & Holidays: 714-947-6606

Orange County: 714-633-0811
 Riverside County: 714-682-0071
 Inyo County: 714-864-0071
 San Bernardino County: 714-684-0071
 Los Angeles County: 213-621-3111
 Ventura County: 213-621-3111
 San Diego County: 714-798-0716

FOR FREE CABLE LOCATING SERVICE

Approved By Utilities For Street Lights Only

[Signature]
 CIVIL ENGINEER

6-10-70
 GENERAL REVISION

Date: 7-8-69

