

2-10 Y

(1) See City of Riverside Day No. 11-1800 for Light Schedule Details, Day No. 11-1800 for fixture details, and Day No. 11-1800 for sign details.

(2) 3' 00" connection and inspection fees to be paid; Date: 10/1/65

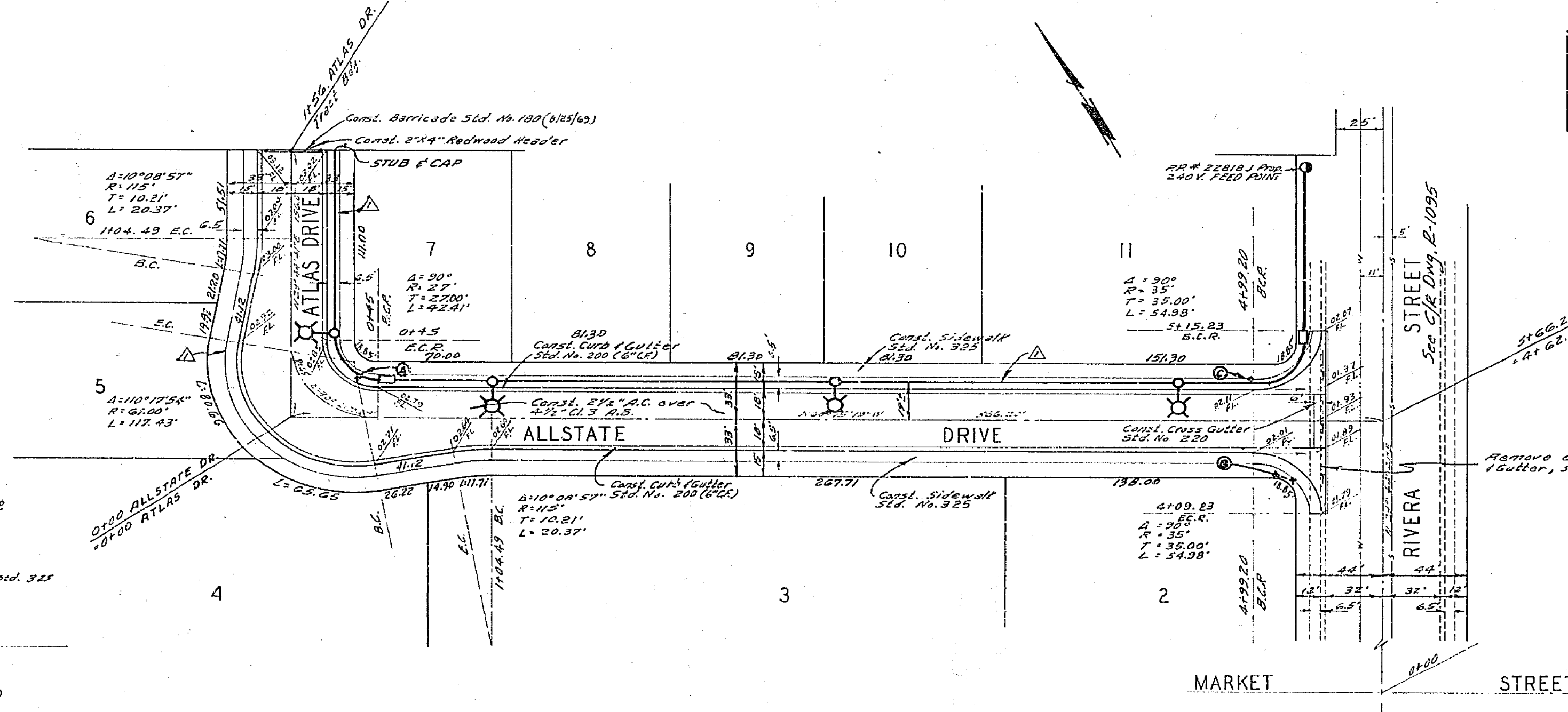
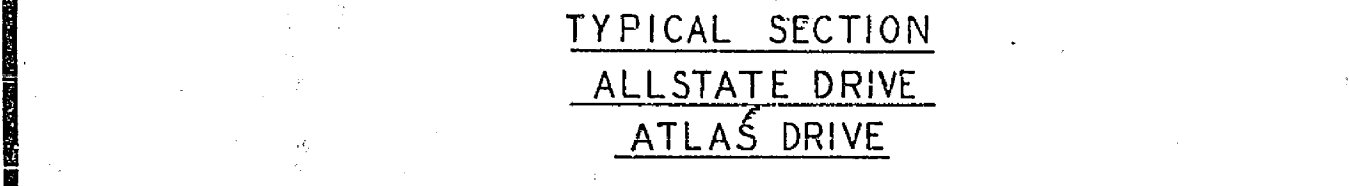
(3) City of Riverside to connect street light cables to electric distribution cables.

Indicates City of Riverside portable light standard, No. 3000 with 20000, 175W, Type II except as noted "Type I Standard" means many luminaires with color temperature 3000, Cat. No. LM 412, or equivalent type.

Indicates No. 312 pattern "Street" luminaires or equivalent "S" type luminaires equal.

Indicates 1" rigid galv. steel conduit, except as noted.

Indicates feed point.



BENCH MARK:
Top of I.P. capped & strong st. and fly line of Rivera St.
Elev. 804.62, OR R.M. 60072

STREET NAME	TRAFFIC CONTROL SIGN SCHEDULE	NO. OF I.P. CAPPED & STRONG ST. AND FLY LINE OF RIVERA ST. ELEV. 804.62, OR R.M. 60072
(A) ALLSTATE DR.	4500	
(B) ATLAS DR.	1900	
(C) RIVERA ST.	1900	
(D) ALLSTATE DR.	4500	
(E) WSB (NOT THROUGH ST) 24'x24"		

(1) Street name and traffic control signs and markings to be furnished and installed by contractor per City specifications and standards of Riverside, California.

(2) Utility approaches to be coordinated per Std. Day No. 307, as located in the field.

QUANTITY ESTIMATE

Curb & Gutter Standard No. 200 (6" C.R.)	1,395 LF
2 1/2" A.C. paving	23,128 SF
Sidewalk Standard No. 305	6,370 SF
Class Gutter Standard No. 220	352 SF
2 1/4" Redwood Header	32 LF
Barricade Standard No. 100	1 EA.
Curb & Gutter Removal	50 LF
Sidewalk Removal	540 SF
Street Light Standards	4 EA.
Imported Base Material	317 CY

TYPICAL SECTION
ALLSTATE DRIVE
ATLAS DRIVE

ALBERT A. WEBB ASSOCIATES
CIVIL ENGINEERS
RIVERSIDE, CALIFORNIA

APPROVED BY: *Albert A. Webb* DATE: 12/1/65
R.E. No. 2876

W.D. 69-39 FOR E.L. YEAGER F.B. 10/2

CITY OF RIVERSIDE, CALIFORNIA
PUBLIC WORKS DEPARTMENT

APPROVED BY: *[Signature]* DATE: 12/1/65
PRINCIPAL ENGINEER

TRAFFIC DIVISION
CHIEF PUBLIC WORKS ENGINEER

DESIGNED BY: *[Signature]* DRAWN BY: *[Signature]* CHECKED BY: *[Signature]*

STREET — PLAN AND PROFILE
ALLSTATE DRIVE — ATLAS DRIVE

TRACT NO. 3998

SCALE: 1" = 50' Horiz., 1" = 5' Vert.

ACCOUNT No. DRAWING NUMBER
R-1399

L5-13381

SHEET 1 OF 1

69-30-A