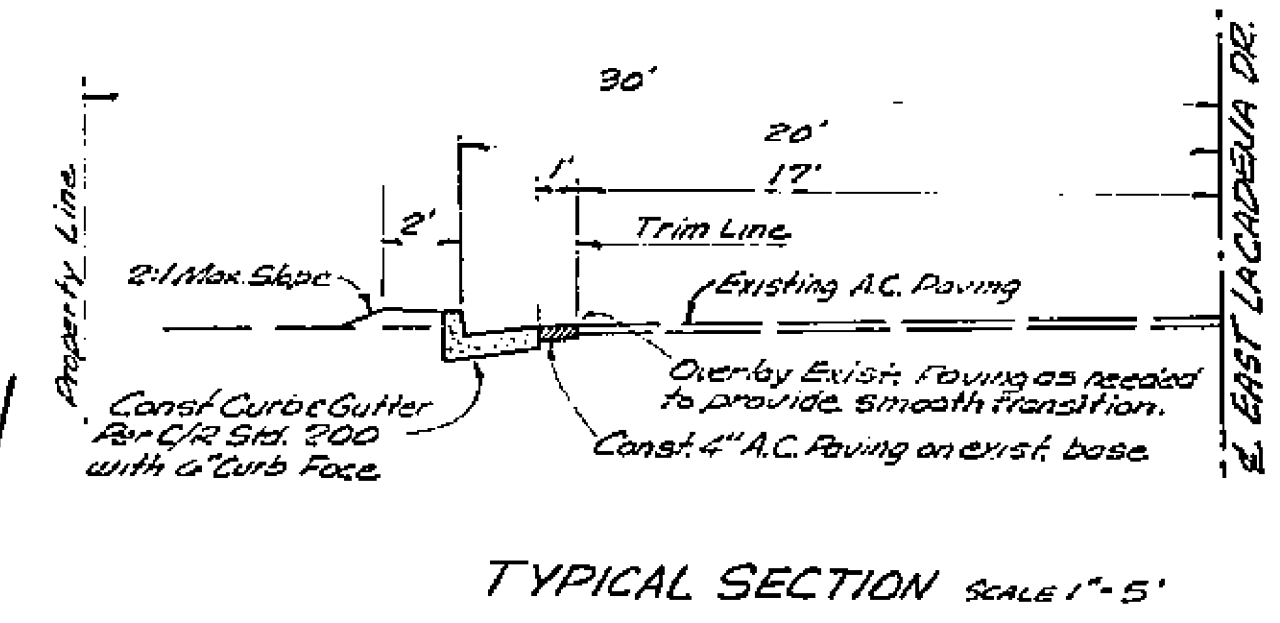
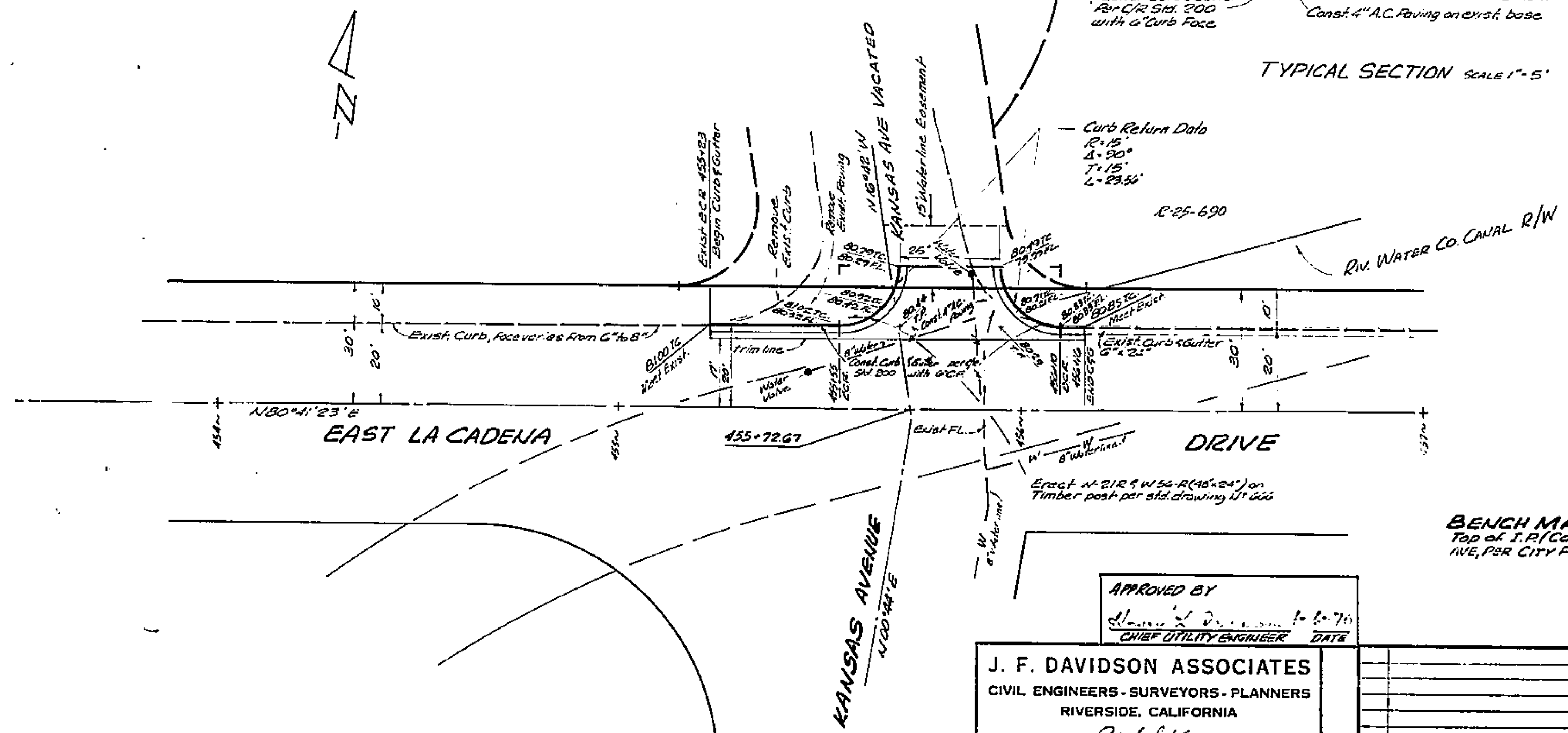


SCALE 1" = 20' HORIZ.
1" = 2' VERT.

454 455 456 457 458



- GENERAL NOTES:
1. It shall be the responsibility of the contractor to clear the right of way in accordance with the provisions of law as it affects each utility including irrigation lines and appurtenances and at no cost to the City.
 2. Construction shall be in accordance with the City of Riverside, Department of Public Works, Specifications No. 461 and Standard Drawings.
 3. Prime coat, seal coat, and paint binder are required.
 4. Trim edge of existing paving to clean, straight line. Construct match-up paving as shown, and overlay existing paving as directed in the plan to produce a smooth transition. Engineer estimates the overlay to be approximately 0.5 tons.
 5. For the relocation of any domestic water service contact the City of Riverside, Mr. C. B. ... 787-7442. Allow two weeks for the processing of a Work Order.



APPROVED BY
[Signature]
CHIEF UTILITY ENGINEER DATE

J. F. DAVIDSON ASSOCIATES
CIVIL ENGINEERS - SURVEYORS - PLANNERS
RIVERSIDE, CALIFORNIA
APPROVED BY *[Signature]* DATE 10-21-79
R.E. No. 13489
W.O. 2266 FOR L.W.W. BROWN ESTATE P.S. 10/3/20

NO.	REVISIONS	APP.	DATE

CITY OF RIVERSIDE, CALIFORNIA
DEPARTMENT OF PUBLIC WORKS
APPROVED BY *[Signature]* DATE 1-14-70
DIRECTOR OF PUBLIC WORKS
TRAFFIC DIVISION
ASSISTANT CITY ENG.

STREET PLAN AND PROFILE
EAST LA CADENA DR.
AT KANSAS AVENUE
R-25-690
HORIZ. SCALE: 1" = 20' VERT. SCALE: 1" = 2'

PROJECT NO. R-1402
SHEET 1 OF 1
FILE NO. 3375