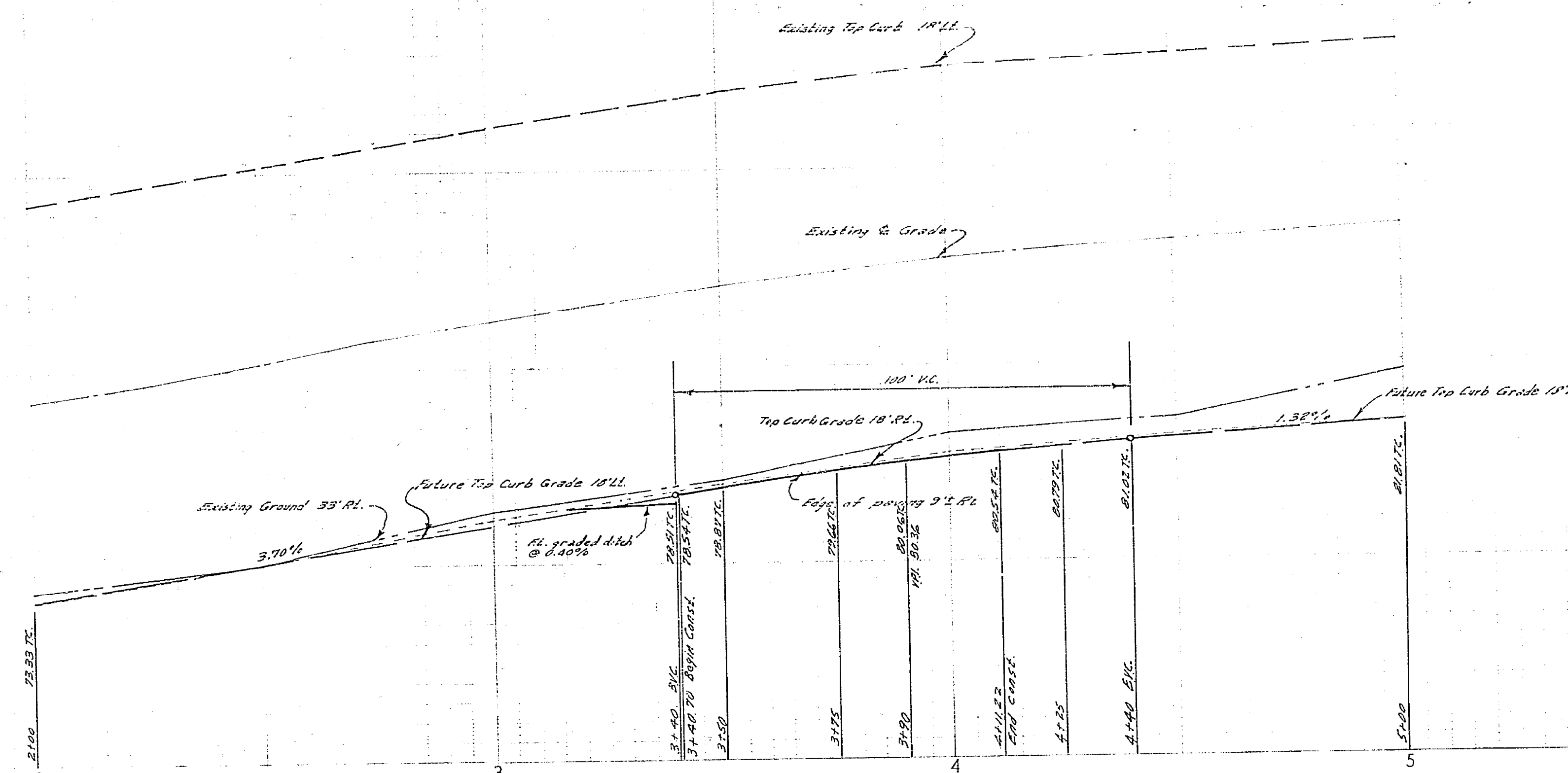


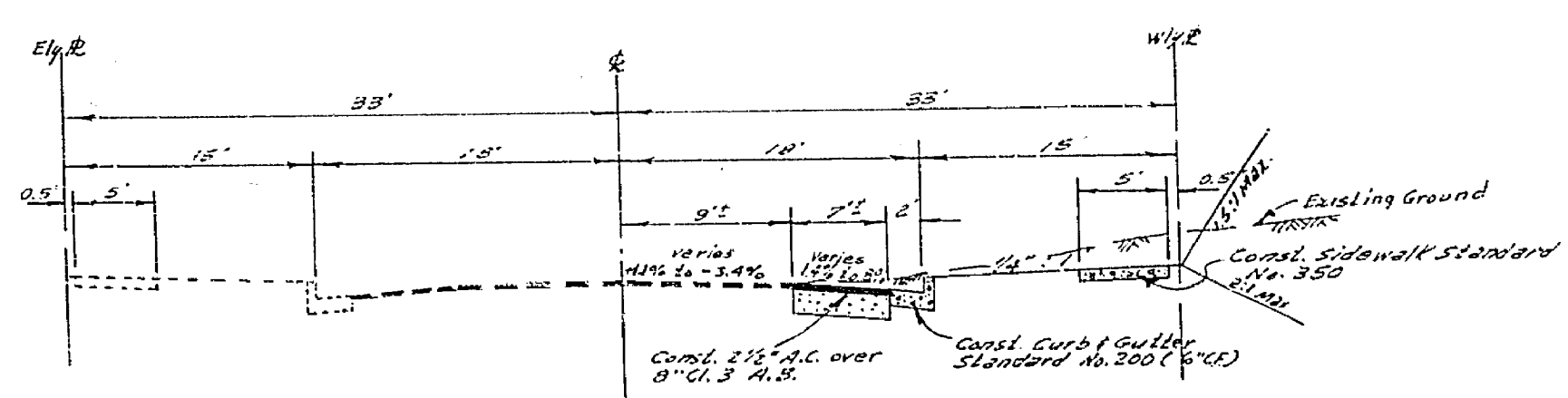
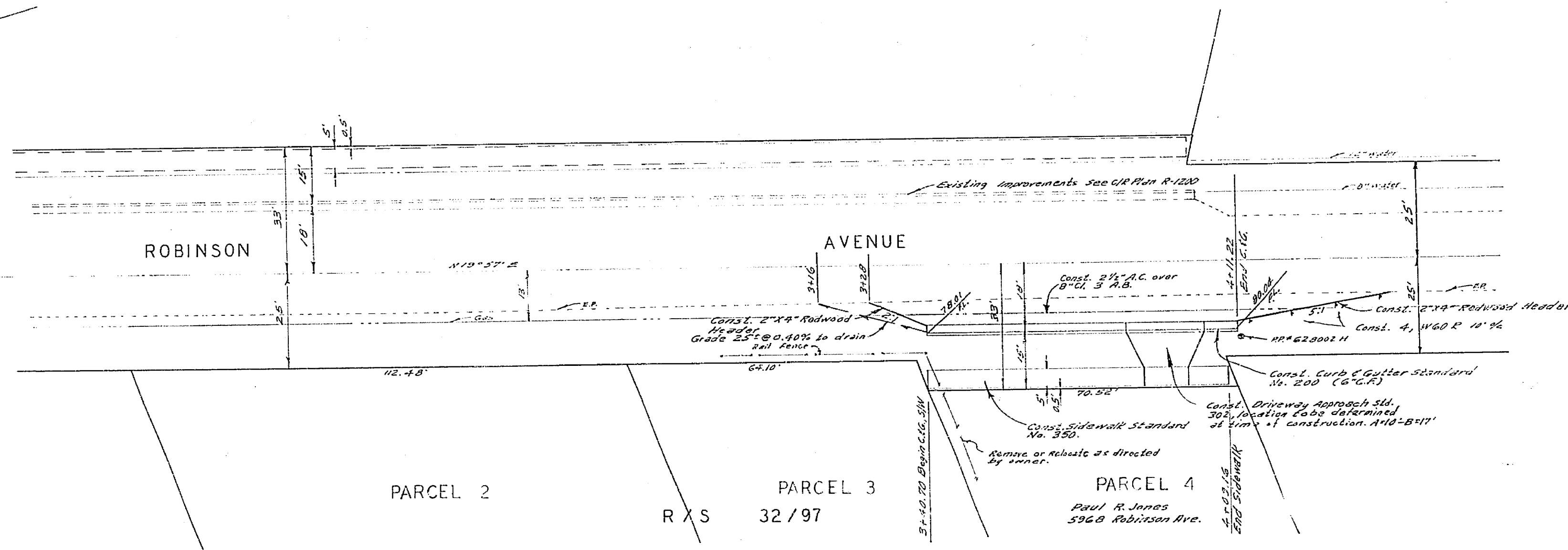
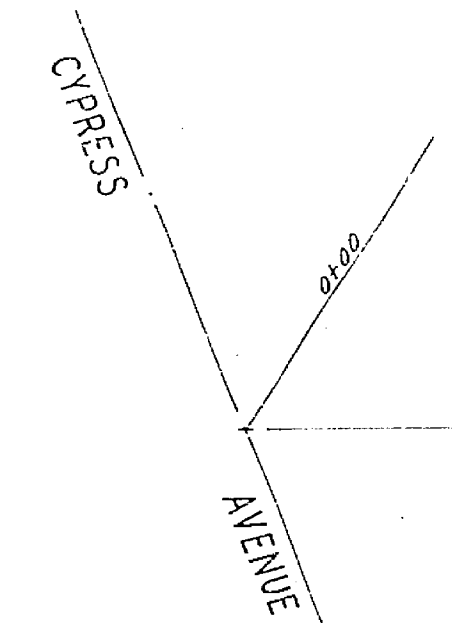
775

775

775



**BENCH MARK**  
 B.M. 5074 in RR #1257440, NE cor. of Cedar and Cypress. Elev. 789.309, G.P. E.D. 703, 4' x 1/8"



**TYPICAL SECTION**  
**ROBINSON AVENUE**  
 FROM STA. 3+40.70 TO STA. 4+16.22  
 1" = 12"

**NOTE TO CONTRACTOR**  
 The existence and location of any underground utility pipes or structures shown on these plans are obtained by a search of the available records. To the best of our knowledge, there are no existing utilities except as shown on these plans.  
 The contractor is required to take the precautionary measures to protect the utility lines shown and any other lines not of record or not shown on these plans.

- GENERAL NOTES**
- It shall be the responsibility of the contractor to clear the right of way in accordance with the provisions of law as it affects each utility, including irrigation lines and appurtenances, and at no cost to the City.
  - Construction shall be in accordance with the City of Riverside, Department of Public Works, Specifications No. 461 and Standard Drawings.
  - Prime coat, seal coat, and paint binder are required.
  - Grading will require a permit under Ordinance 5095 for a cut or fill exceeding 100 cubic yards, or a fill over one foot in depth.
  - The contractor shall arrange for a soil test to be made by a Soil Engineer. The test results shall be prepared to rough grade. Depth of subgrade shall be determined by the Soil Engineer in accordance with the City of Riverside Specifications and Standard Drawings.
  - Trim edge of existing pavement, where new paving joins existing pavement, to a clean, straight line. Construct matching gutter to drain and overlying paving as directed in the field to produce a smooth crown section.

**QUANTITY ESTIMATE**

Curb & Gutter Standard No. 200 (E.C.P.)	71 L.F.
Sidewalk Standard No. 350	342 S.F.
2 1/2" A.C. Paving	666 S.F.
2" x 4" Redwood Header	50 L.F.
Imported Base Material	17 C.Y.
Driveway Approach Standard No. 302	4 E.P.
W.G.P.	

<b>ALBERT A. WEBB ASSOCIATES</b> CIVIL ENGINEERS RIVERSIDE, CALIFORNIA APPROVED BY: <i>[Signature]</i> DATE: 1/13/70 R.E. No. 3876 W.G. 299 FOR Paul R. Jones	CITY OF RIVERSIDE, CALIFORNIA PUBLIC WORKS DEPARTMENT APPROVED BY: <i>[Signature]</i> DATE: 2-11-70 DIRECTOR OF PUBLIC WORKS CHIEF PUB. WORKS ENGR. <i>[Signature]</i> DATE: 2-11-70	<b>STREET PLAN AND PROFILE</b> <b>ROBINSON AVENUE</b> Between Cypress, Signa & Pine Avenues From 34' to 40' S.P. of Cypress Avenue W.P. Point @ 5968 Robinson Ave.		ACCOUNT NO. <b>R-1406</b>
		SCALE: 1" = 20' Horiz., 1" = 4' Vert.		SHEET: 1 OF 1 69-299-A