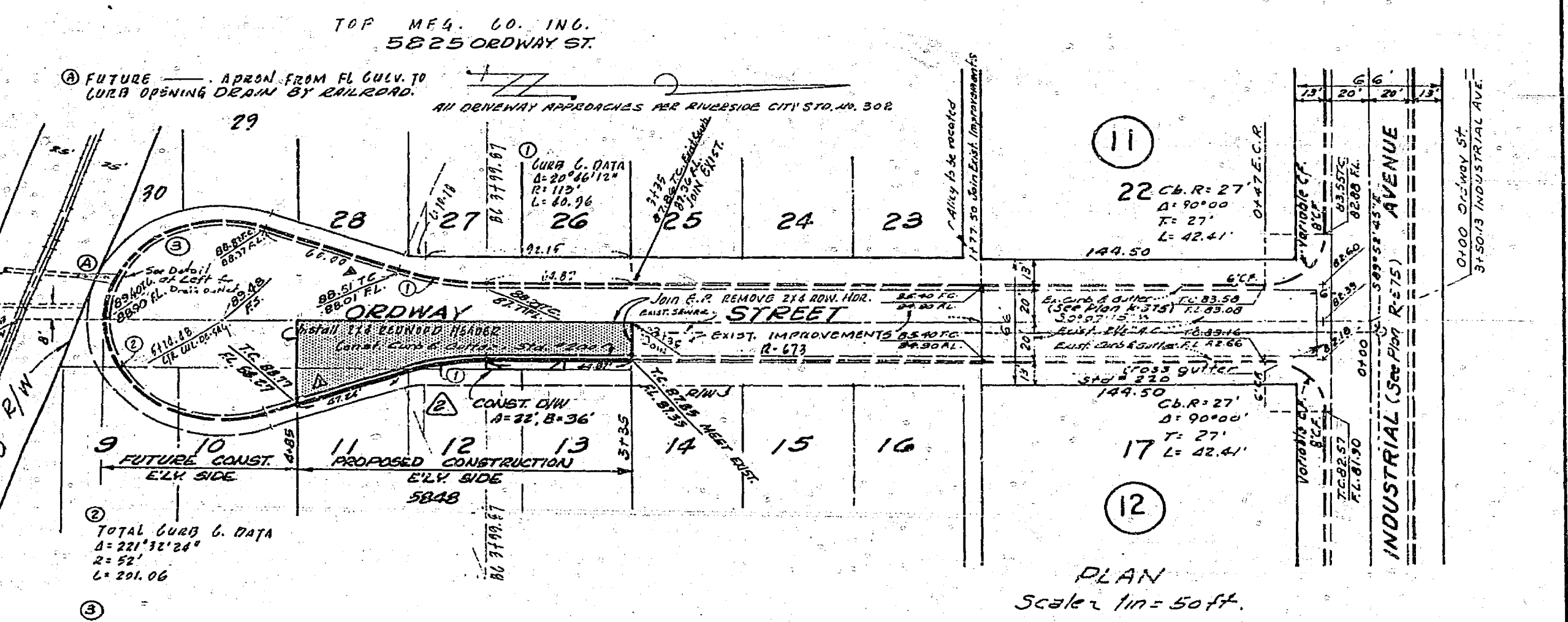


- GENERAL NOTES:**
1. THE EXISTENCE & LOCATION OF ANY UNDERGROUND UTILITIES OR STRUCTURES SHOWN ON THESE PLANS ARE OBTAINED BY A SEARCH OF AVAILABLE RECORDS. TO THE BEST OF OUR KNOWLEDGE THERE ARE NO EXISTING UTILITIES EXCEPT THOSE SHOWN ON THE PLAN. THE CONTRACTOR IS REQUIRED TO TAKE ALL PRECAUTIONS NECESSARY TO PROTECT THE UTILITIES SHOWN AND ANY OTHER LINES NOT OF RECORD OR NOT SHOWN ON THESE PLANS.
 2. CONSTRUCTION SHALL BE IN ACCORDANCE WITH STANDARD SPECIFICATIONS FOR PUBLIC WORKS CONSTRUCTION 1970 EDITION AND THE CITY OF RIVERSIDE STANDARD DRAWING.
 3. PRIME COAT, SEAL COAT AND PAINT BINDER ARE REQUIRED.
 4. FOR RELOCATION OF EXISTING CITY, DOMESTIC OR IRRIGATION WATER FACILITY OR ELECTRIC POWER UTILITY FACILITY TO BE DONE BY CITY FORCES, CONTACT CHARLES HARRIS, WATER COMM. MECHANICAL ENGINEER, AT 789-7088. SCHEDULE MEETINGS & CHECKS TO PROCEED A WEEK BEFORE RELOCATION WORK BEGINS.

B.M.: R.R. SPIKE IN POLE NO. 18107-J OF N.E. CORNER OF INDUSTRIAL AVE. AND FEEDOUT ST. R.S. 387/17. ELEV. 777.10



REVISIONS			CITY OF RIVERSIDE CALIFORNIA DEPARTMENT OF PUBLIC WORKS
MARK	DATE	DESCRIPTION	
A	2/12/70	Revised curb grade to match existing curbs with use of Sta. 3135. DN. 789.14	STREET PLANS AND PROFILES ORDWAY ST. FROM INDUSTRIAL AVE. TO ROME SQUARE BUILDING PERMIT @ 5825 ORDWAY ST.
B	4/10/70	ADDED 7 1/2\"/>	

J. F. DAVIDSON ASSOCIATES
 CIVIL ENGINEERS - SURVEYORS
 PLANNERS
 RIVERSIDE CALIFORNIA
 APPROVED BY *[Signature]*
 W.O. 3800 PH. 1. TOTMAN F.B.

DESIGNED BY *[Signature]* CHECKED BY *[Signature]* APPROVED BY *[Signature]*
 DRAWN BY *[Signature]* RECOMMENDED BY *[Signature]* ASSISTANT CITY ENGINEER
 DATE 2-13-70 SHEET 1 OF 1