

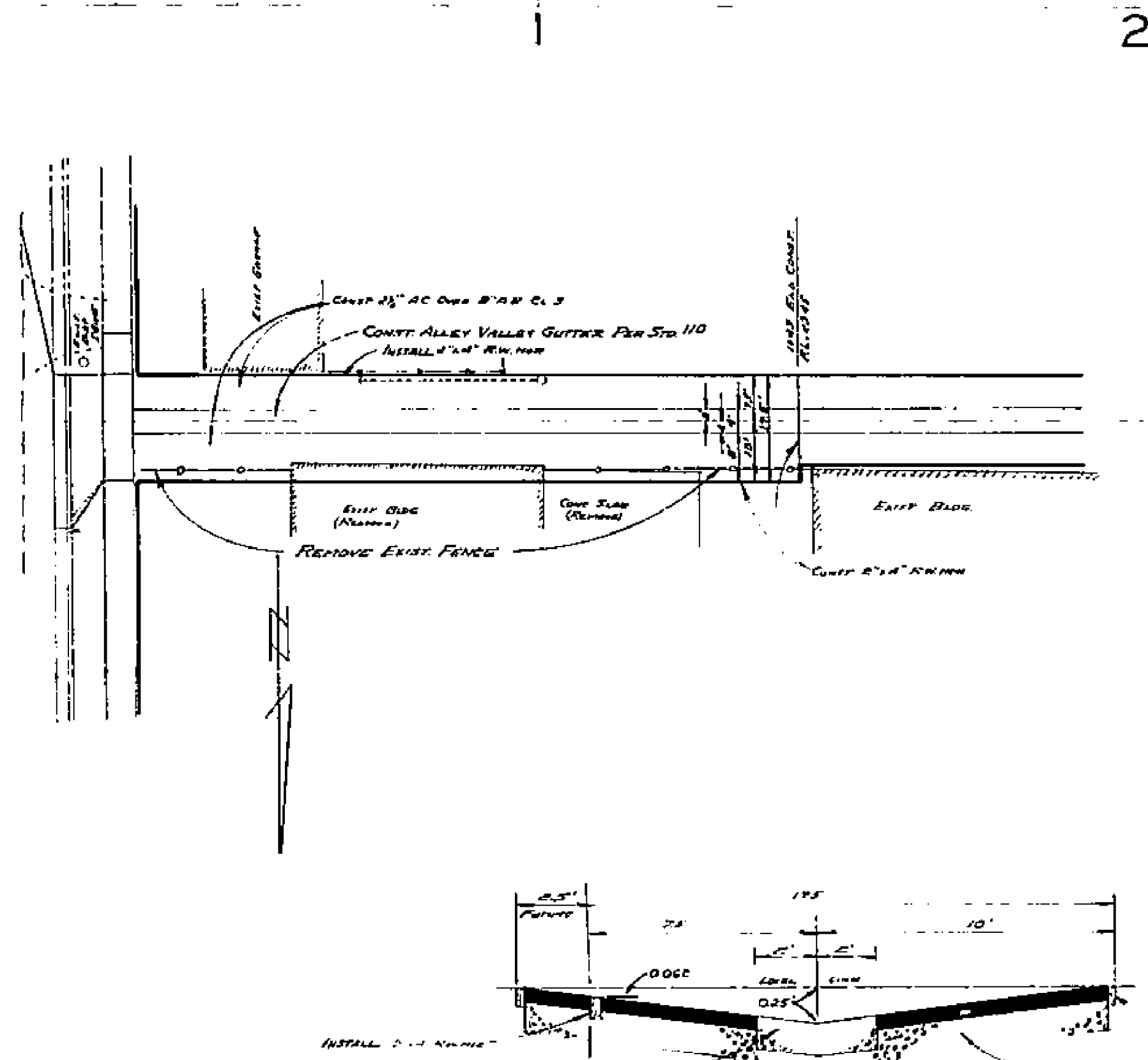
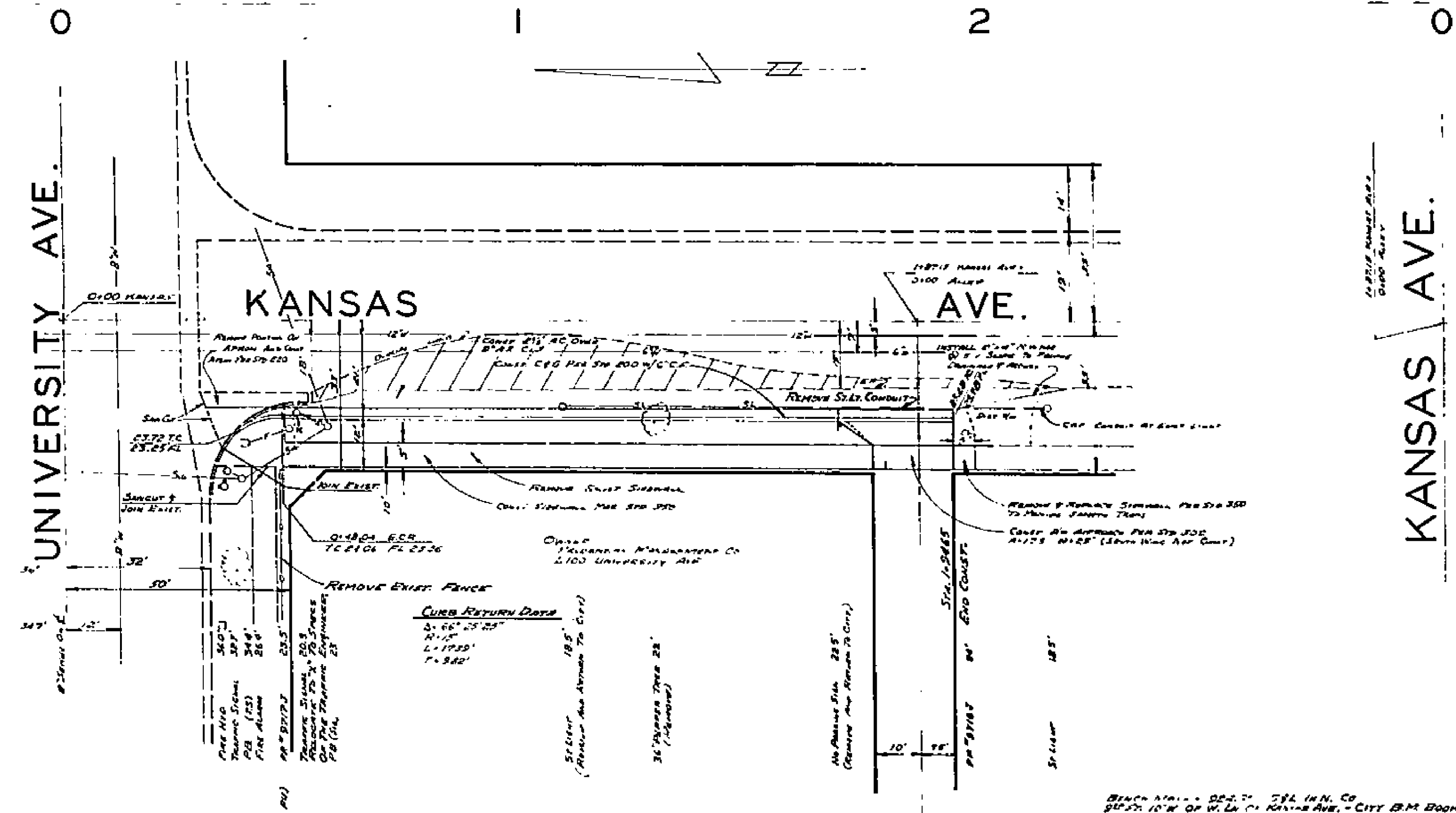
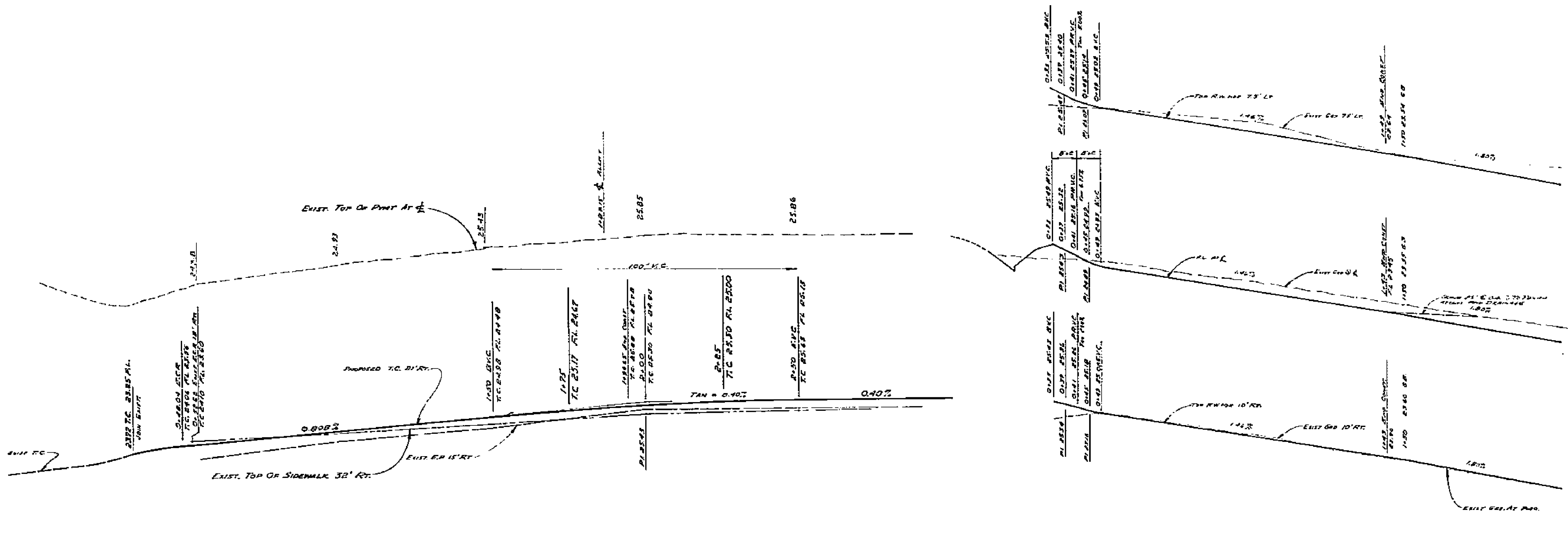
LT. 925

CL 925

RT. 925

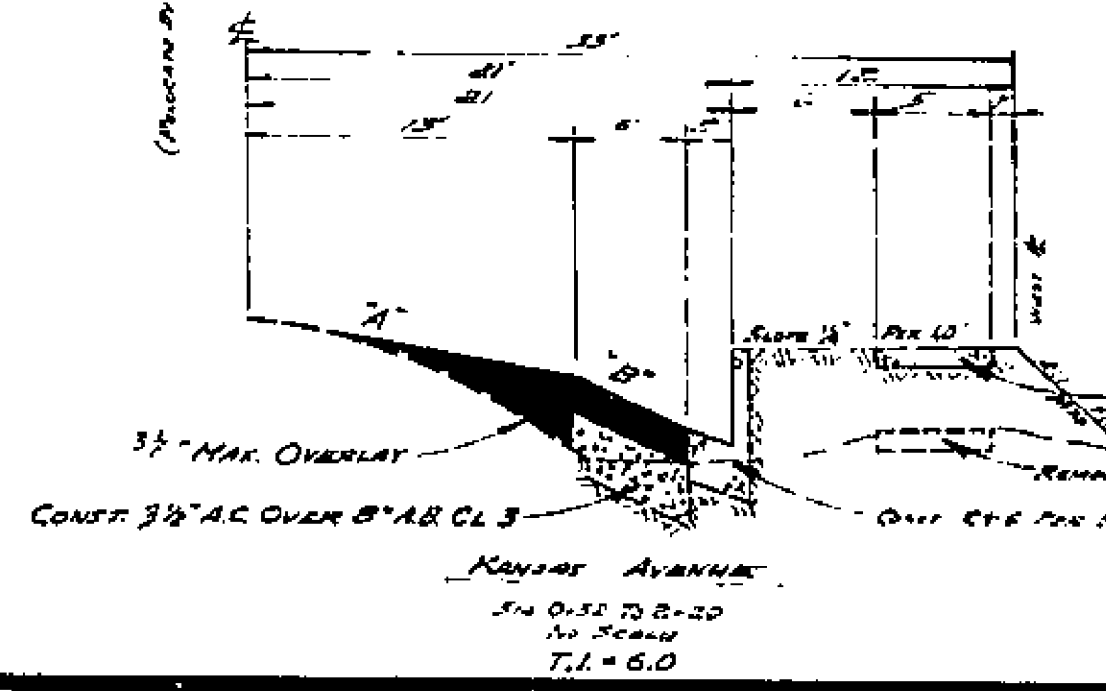
925 CL

925 RT



- GENERAL NOTES**
- It shall be the responsibility of the Contractor to leave the right of way in accordance with the provisions of law as it affects each utility including irrigation lines and appurtenances and at no cost to the City.
 - Construction shall be in accordance with the City of Riverside, Department of Public Works, Specification No. 461 and Standard Drawings.
 - Prime coat, seal coat, and paint binder are required.
 - Trim edge of existing paving where new paving joins existing pavement to a smooth, straight line. Construct match-up paving as shown, and overlay paving as directed in the field to produce a smooth crown section. Engineer estimates overlay to be 4 tons.
 - For relocation of existing city domestic or irrigation water facility, or electric power utility facilities to be done by City forces, contact Charles Hare, Water Control Engineer, at 787-7447. Schedule about 2 weeks to process a work order before relocation work begins.
 - Contractor to obtain daily circuit clearances before working on existing street light circuits call 787-7511.
 - Contractor shall contact Traffic Engineer Division, 787-7366, prior to any relocation of traffic signal equipment. It may be necessary to provide or replace existing pull boxes and signal cabinets to meet City standards.

STATION	A' GRADE	B' GRADE
1+00	3.52	5%
1+48	3.82	5.5%
2+00	4.02	7.4%



J. F. DAVIDSON ASSOCIATES
 CIVIL ENGINEERS - SURVEYORS - PLANNERS
 RIVERSIDE, CALIFORNIA

APPROVED BY: *[Signature]* DATE: 1-23-70
 R.E. No. 15,692

W.O. 2420 FOR PRUDENTIAL MANAGEMENT CO. F.D. 1020

MARK	REVISIONS	APPR.	DATE

DESIGNED BY: *[Signature]* DRAWN BY: *[Signature]* CHECKED BY: *[Signature]*

CITY OF RIVERSIDE, CALIFORNIA
 DEPARTMENT OF PUBLIC WORKS

APPROVED BY: *[Signature]* DATE: 2/27/70
 OFFICE ENGINEER
 PARK DEPARTMENT
 TRAFFIC DIVISION
 ASSISTANT CITY ENG.

BLDG. PERMIT 2100 UNIVERSITY AVE.
KANSAS AVENUE
 WEST SIDE
 UNIVERSITY AVE TO 200' SOUTHERLY ALLEY
 SOUTHERLY OF UNIVERSITY AVE. KANSAS AVE. TO 200' WESTERLY

HORIZ. SCALE: 1" = 20'
 VERT. SCALE: 1" = 2'

PROJECT NO.
R-1413
 SHEET 1 OF 1
 FILE NO. 3577