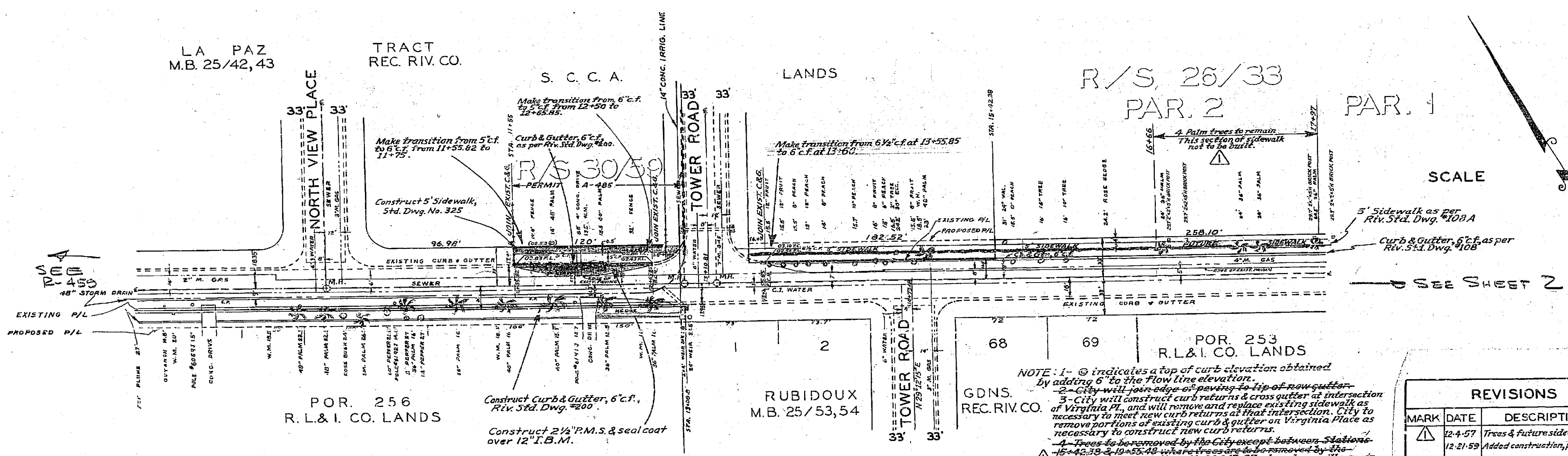


B.M. 803.45' R.R. SPK. IN PALM TREE STA. 10+06.2  
 F.B. 618/1 457/71  
 SCALE: HOR. 1" = 50'  
 VERT. 1" = 5'



SCALE 1" = 50'

NOTE: 1- @ indicates a top of curb elevation obtained by adding 6" to the flow line elevation.  
 2- City will join edge of paving to tip of new gutter.  
 3- City will construct curb returns & cross gutters at intersection of Virginia Pl., and will remove and replace existing sidewalk as necessary to meet new curb returns at that intersection. City to remove portions of existing curb & gutter on Virginia Place as necessary to construct new curb returns.  
 4- Trees to be removed by the City except between Stations 15+42.38 & 19+55.48 where trees are to be removed by the contractor and stations 15+42.38 to 19+55.48 where trees will remain.  
 5- Utilities to be reconnected by the utility concerned.

I AGREE TO CONSTRUCT CURB-GUTTER & SIDEWALK FROM 15+42.38 TO 19+55.48 AS SHOWN.

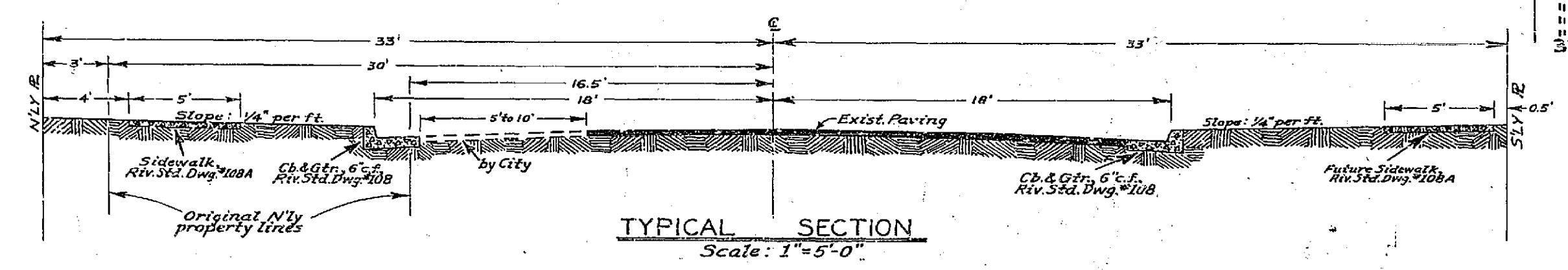
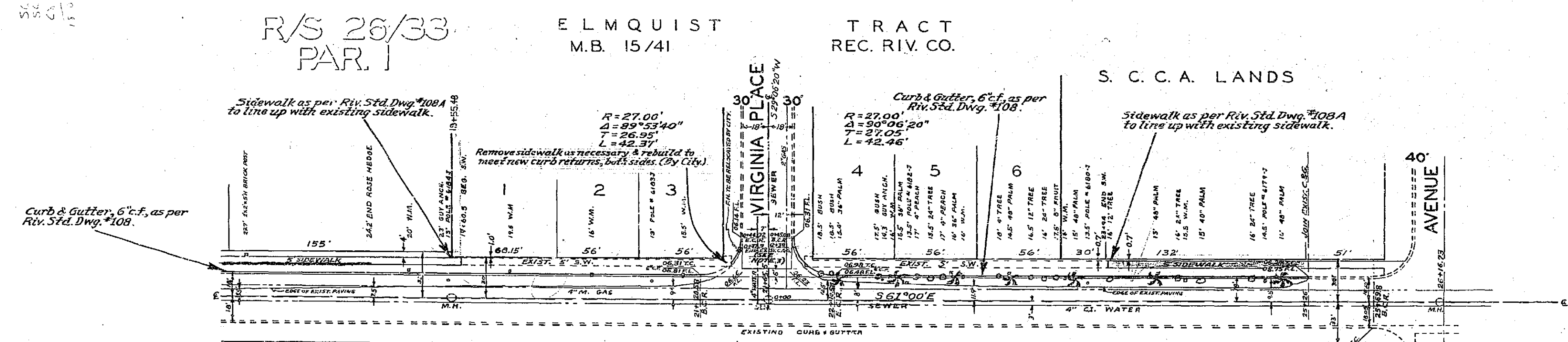
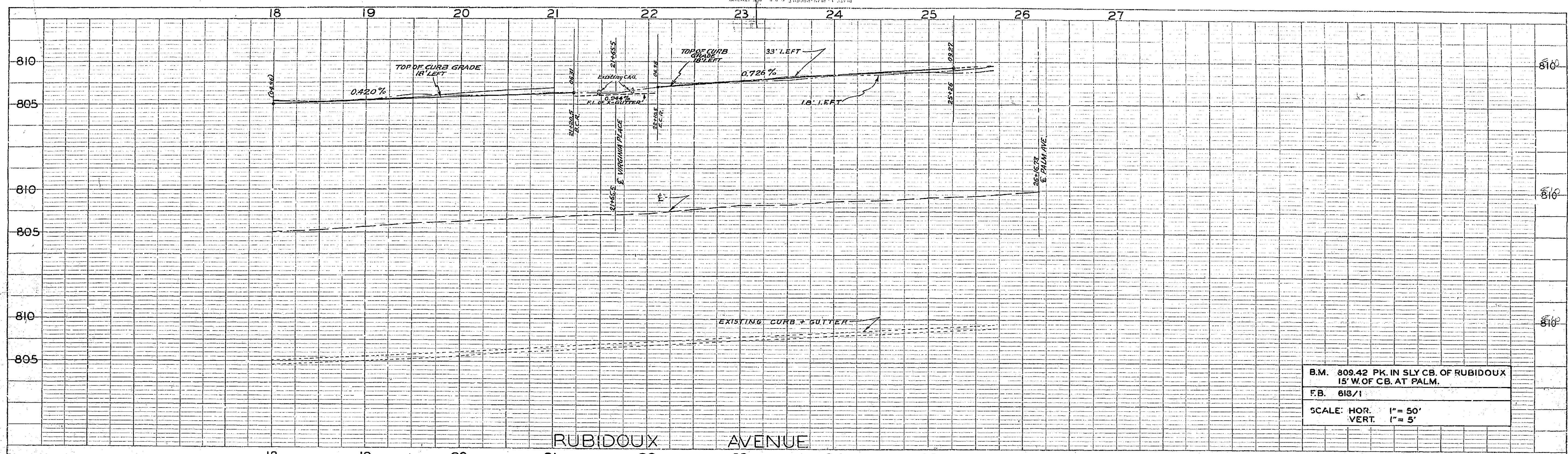
NOTE: It shall be the responsibility of the Contractor to clear the right of way in accordance with the provisions of the law as it affects each utility including irrigation lines and appurtenances and at no cost to the City.

REVISIONS			CITY OF RIVERSIDE CALIFORNIA DEPARTMENT OF PUBLIC WORKS
MARK	DATE	DESCRIPTION	
Δ	12-4-57	Trees & future sidewalk, n.s.	RUBIDOUX AVENUE STREET WIDENING BET. GRAND AVE. & PALM AVE.
	12-21-59	Added construction, portion R/S 26/33	

DESIGNED BY W.R.G.	CHECKED BY J.L.B.	APPROVED BY <i>[Signature]</i>	<b>R-142</b>
DRAWN BY S.R.-H.B.	RECOMMENDED BY <i>[Signature]</i>	DIRECTOR OF PUBLIC WORKS	
		DATE Nov. 12, 1957	SHEET 1 OF 2





REVISIONS			CITY OF RIVERSIDE CALIFORNIA DEPARTMENT OF PUBLIC WORKS	
MARK	DATE	DESCRIPTION		
			RUBIDOUX AVENUE STREET WIDENING BET. GRAND AVE. & PALM AVE.	
DESIGNED BY W.D.G.		CHECKED BY J.L.B.	 DIRECTOR OF PUBLIC WORKS <b>R-142</b>	
DRAWN BY G.F.-K.B.		RECOMMENDED BY		
		ASSISTANT CITY ENGINEER	DATE: Nov. 12, 1957 SHEET 2 OF 2	

PROFILE	DATE	BY

PLAN	DATE	BY