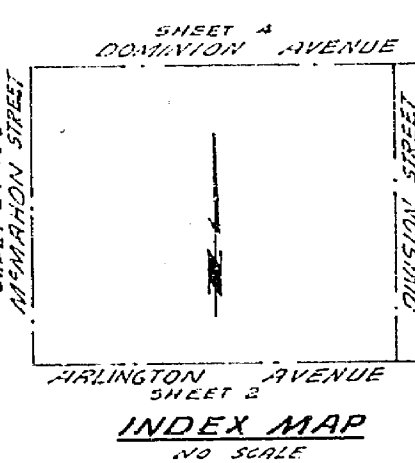


TRAFFIC CONTROL & STREET NAME SIGN SCHEDULE	
A	ARLINGTON AVE. 3300
B	M'NAHAN ST. 5700
C	DOMINION AVE. 3300
D	DIVISION ST. 5700
E	ARLINGTON AVE. 3300

QUANTITY ESTIMATE	
Palm Tree Relocation	24 EA.
Street Name Signs	4 EA.
Warning Signs	21 EA.
18" R.C.P. 3000	40 LF.
18" R.C.P. 3000	42 LF.
Curb Gutter Standard No. 200 (1" C.E.)	1,400 LF.
Curb Gutter Standard No. 200 (2" C.E.)	4,824 LF.
Sidewalk Standard No. 250	13,070 SF.
2 1/2" R.C. paving	112,138 SF.
Imported Base Material	5,227 SF.
Curb Gutter Standard No. 200	13,350 SF.
2 1/4" R.C.P. Standard	504 LF.
Articulate Standard No. 100	7 EA.
Curb Only Standard No. 200 (1" C.E.)	768 LF.
4" Concrete Drain Pipe 150.0	430 LF.
R.C. Beam Standard No. 250	391 LF.
Paving Removal	800 SF.
M.H. Standard No. 500 (S.D.)	3 EA.
Catch Basin Standard No. 405	5 EA.
Clean out Box Standard 425	1 EA.



- Notes:
- It shall be the responsibility of the contractor to provide all necessary permits and approvals from the City of Riverside.
 - The contractor shall arrange for a well kept site to be kept by the contractor at all times during the construction.
 - Prime coat, seal coat, and paint binder are required.
 - Grading will require a permit under Ordinance 5095 for a cut or fill exceeding 100 cubic yards, or a fill over one foot in depth.
 - The contractor shall arrange for a well kept site to be kept by the contractor at all times during the construction.
 - Depth of base material and all paving shall be determined by City of Riverside Design Standards and best practices.
 - Edge of existing pavement, where new paving joins existing pavement, to a clean, straight line. Construct matching paving to the existing paving as directed by the field inspector.
 - Contractor shall place curb later than 60' within 10' of proposed curb on the City of Riverside Plan No. 785.
 - Street name and traffic control signs and posts to be furnished and installed by the contractor. See specifications and standard drawings for details.
 - The amount of asphalt overlay on existing pavements has been estimated by the Engineer to be 18.5 tons.

ALBERT A. WEBB ASSOCIATES
CIVIL ENGINEERS
RIVERSIDE, CALIFORNIA

APPROVED BY: *[Signature]* DATE: 1/10
R.E. No. 9276

DESIGNED BY: B.E.L. DRAWN BY: B.E.L. CHECKED BY: B.E.L.

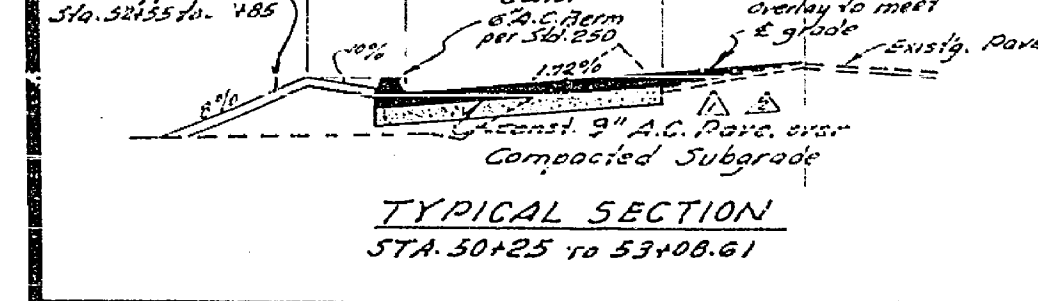
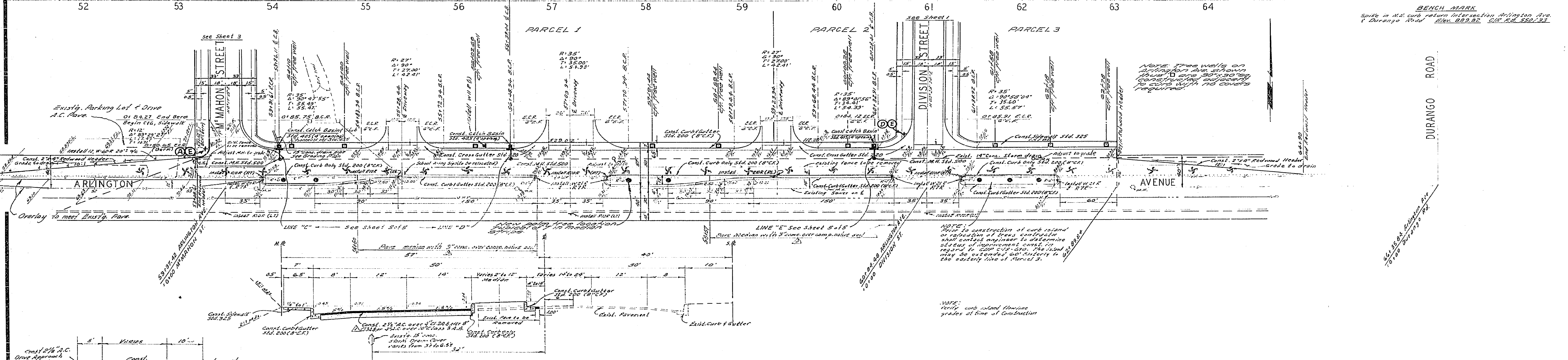
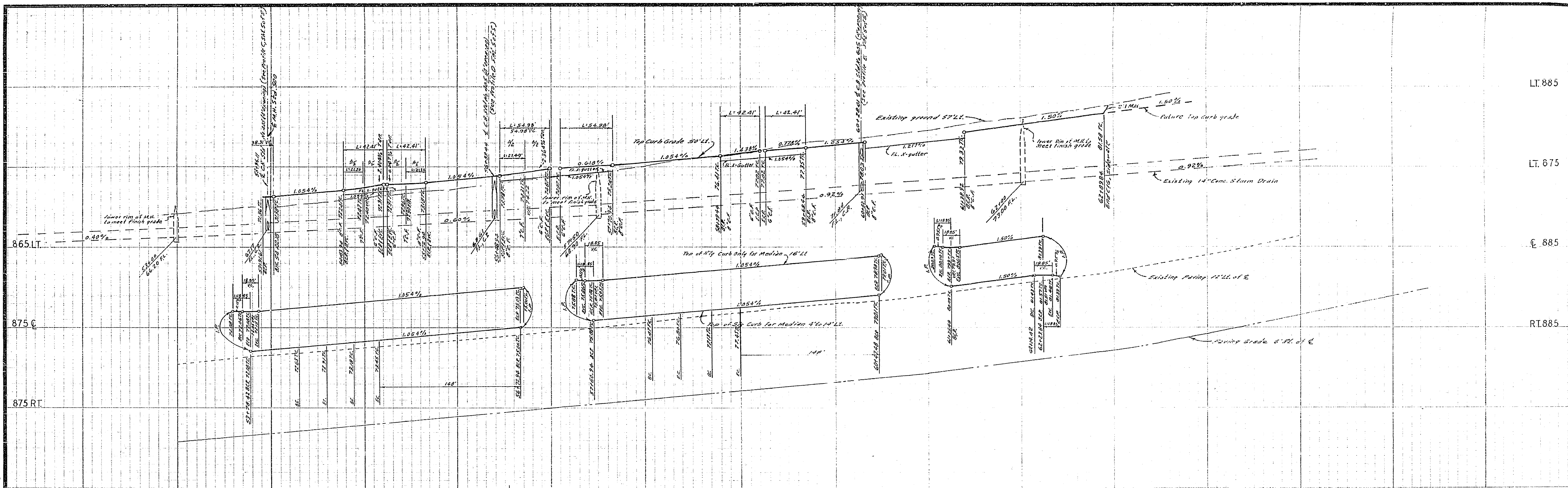
CITY OF RIVERSIDE, CALIFORNIA
PUBLIC WORKS DEPARTMENT

APPROVED BY: *[Signature]* DATE: 1/10
TRAFFIC DIVISION
CHIEF PUBLIC WORKS ENGINEER

STREET PLAN AND PROFILE
DIVISION STREET
FROM ARLINGTON AVE. TO DOMINION AVE.
R/S 1079

ACCOUNT No. _____
DRAWING NUMBER
R-1427
SHEET 1 OF 5
69-282-A

SCALE: 1" = 50' HORIZ., 1" = 5' VERT.



TYPICAL SECTION
ARLINGTON AVENUE
NO SCALE
T.I. = 7

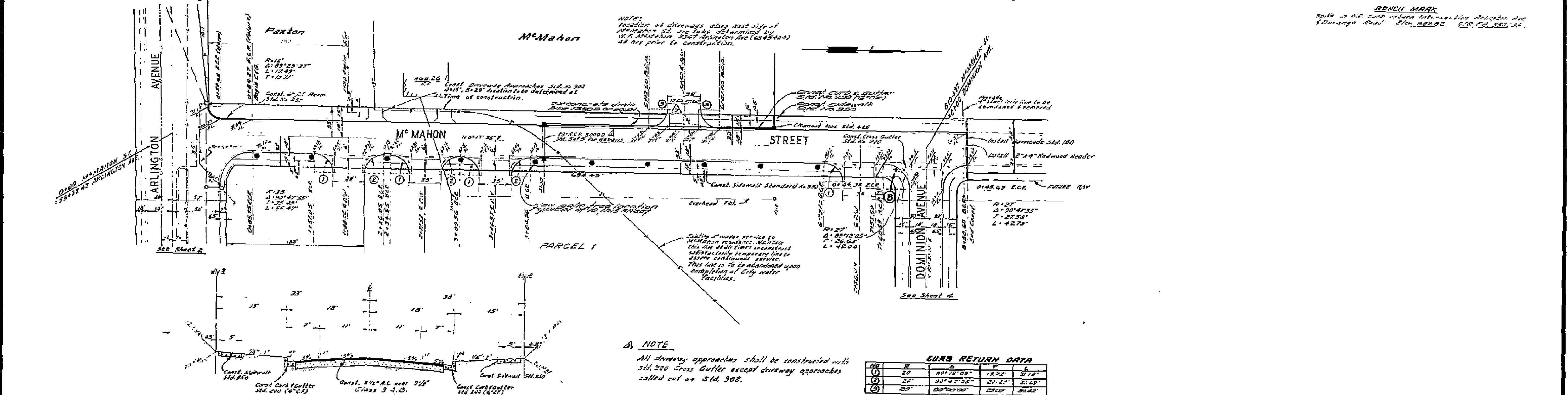
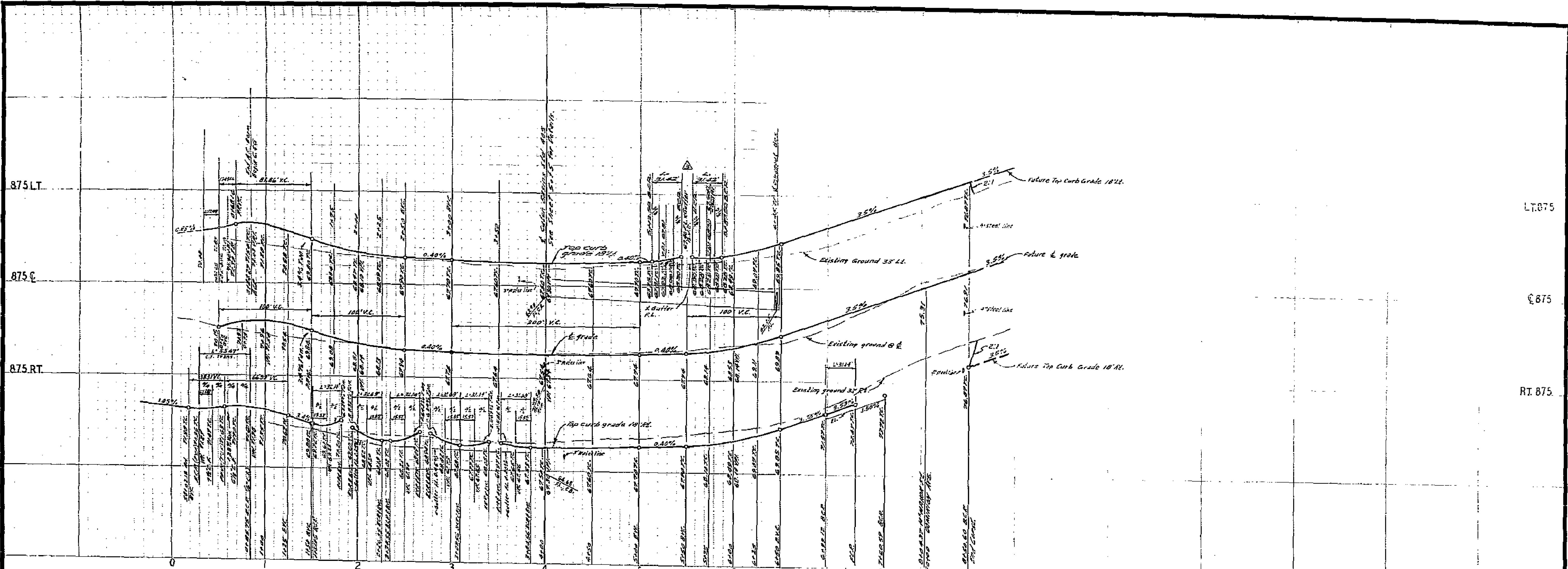
ALBERT A. WEBB ASSOCIATES
CIVIL ENGINEERS
RIVERSIDE, CALIFORNIA
APPROVED BY *E. L. Webb* DATE 1/24/70
R.E. No. 3876
W.O. 69-282 FOR: Herbert M. Piken Co. P.B. 1012

NO.	REVISIONS	DATE
1	Per. Section Revised per C.R. 111111	1-21-70
2	Pavement Section Added	1-21-70

CITY OF RIVERSIDE, CALIFORNIA
PUBLIC WORKS DEPARTMENT
APPROVED BY *[Signature]* DATE 5/11/70
PRINCIPAL ENGINEER
TRAFFIC DIVISION
CHIEF PUBLIC WORKS ENGINEER

STREET PLAN AND PROFILE
ARLINGTON AVENUE
FROM M'MAHON ST. TO DIVISION ST.
R/S 1079
SCALE: 1" = 50' Horiz., 1" = 5' Vert.

ACCOUNT No.
DRAWING NUMBER
R-1427
SHEET 2 OF 5
69-282-A



TYPICAL SECTION
M' MAHON STREET
NO SCALE
77.5

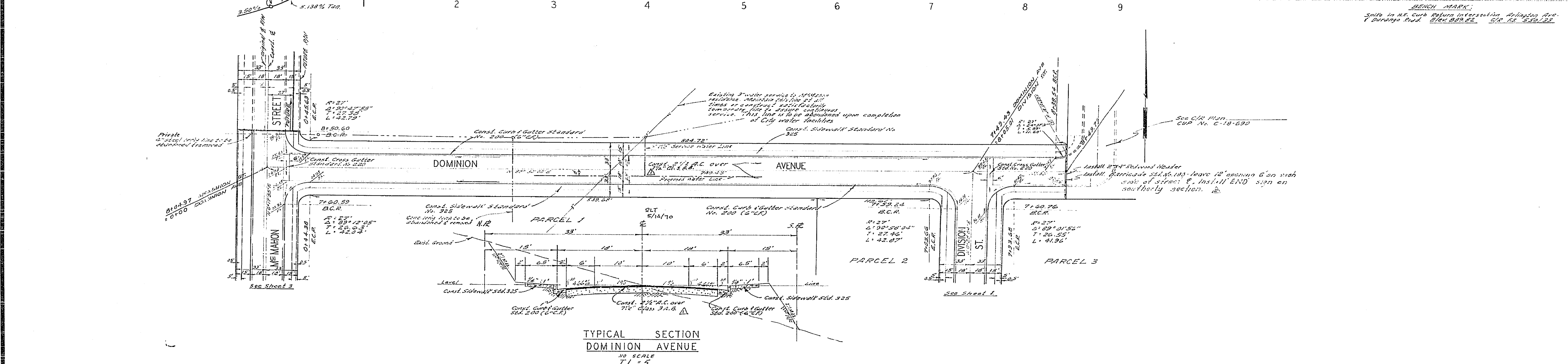
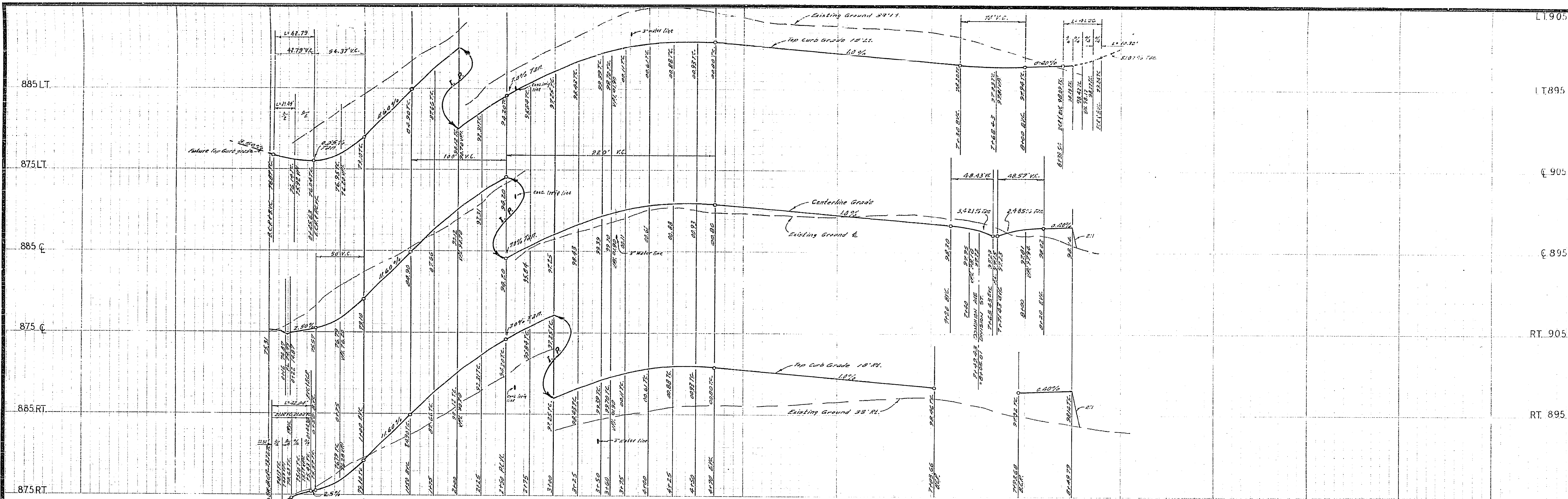
ALBERT A. WEBB ASSOCIATES
CIVIL ENGINEERS
RIVERSIDE, CALIFORNIA
APPROVED BY *[Signature]* DATE 1/2/70
R.E. NO. 9872

NO.	REVISIONS	DATE
1	ADD SECTION ADDED	1/2/70
2	ADD D-LOAD TO SD, 18" 30000' H. EDW	1/2/70

CITY OF RIVERSIDE, CALIFORNIA
PUBLIC WORKS DEPARTMENT
APPROVED BY *[Signature]* DATE 1/2/70
TRAFFIC DIVISION

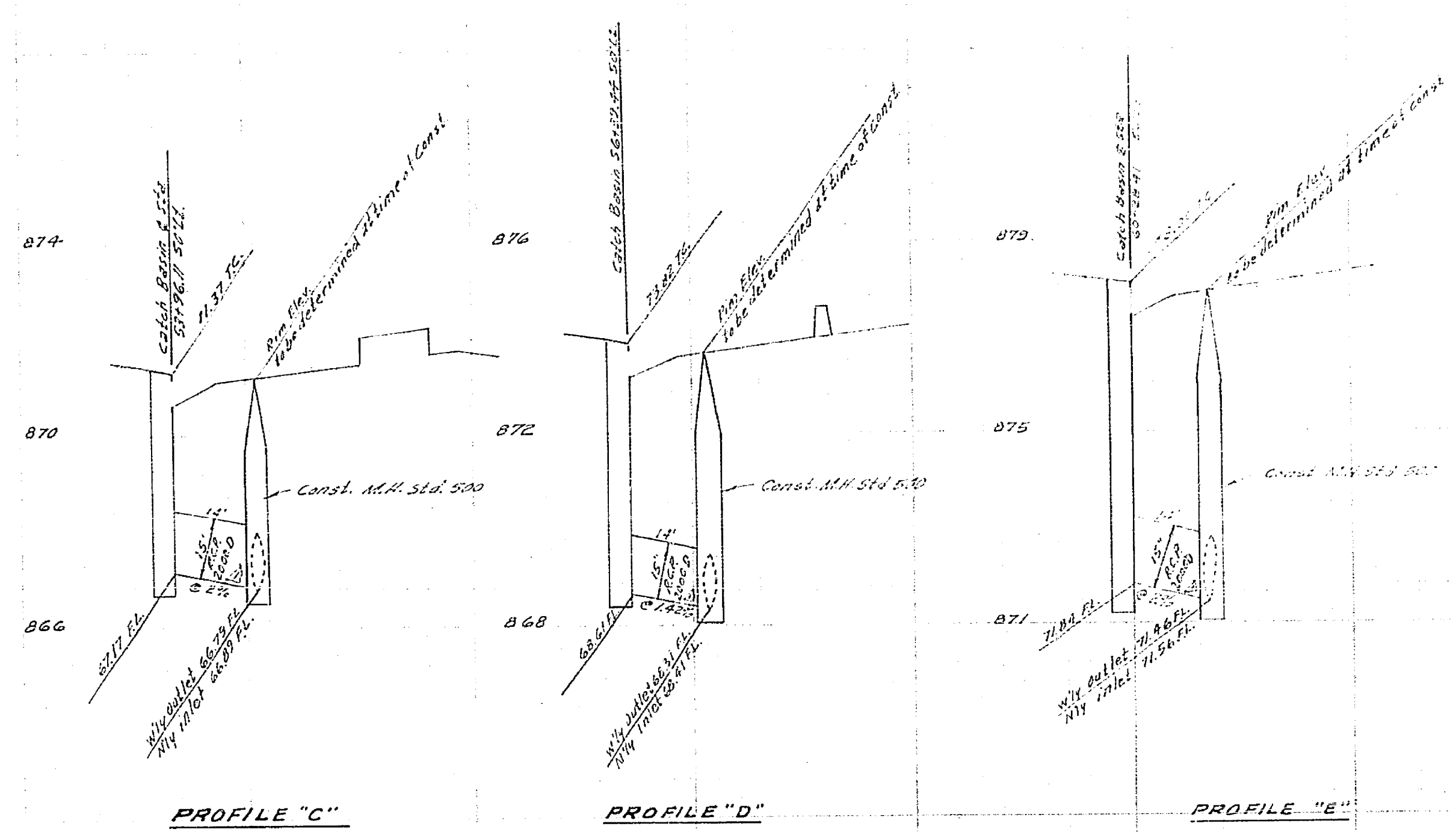
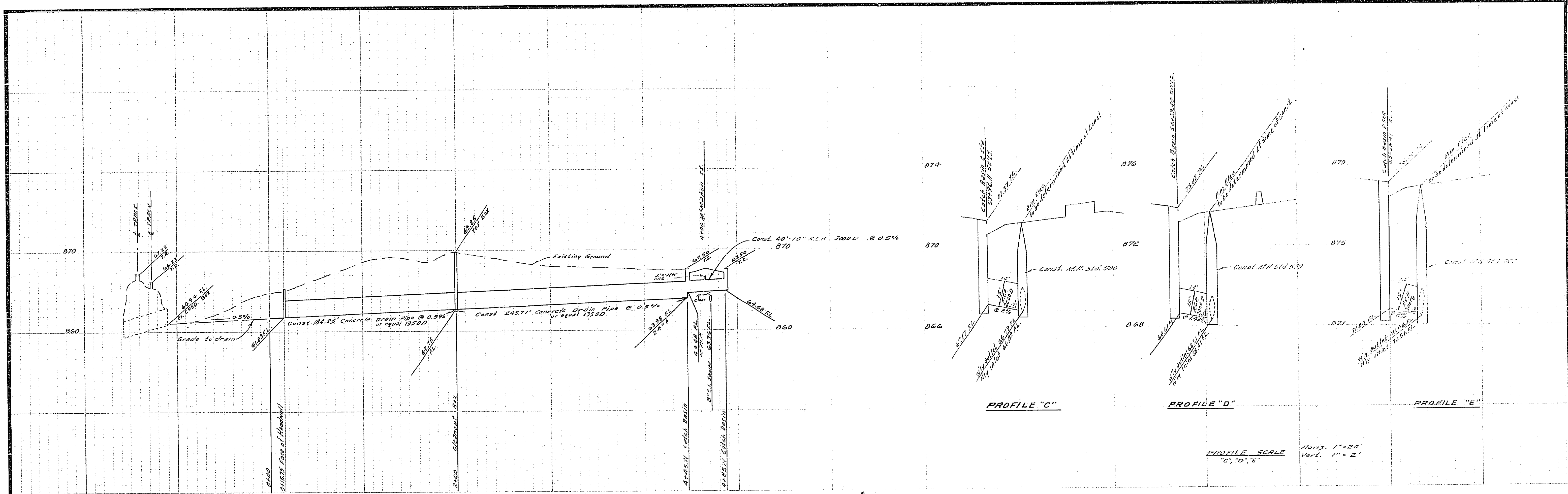
STREET PLAN AND PROFILE
M' MAHON ST.
FROM ARLINGTON AVE TO DOMINION AVE
R/S 1079
SCALE 1" = 50' Horiz 1" = 5' Vert

ACCOUNT NO.
DRAWING NUMBER
R-1427
SHEET 3 OF 5
69-282-A

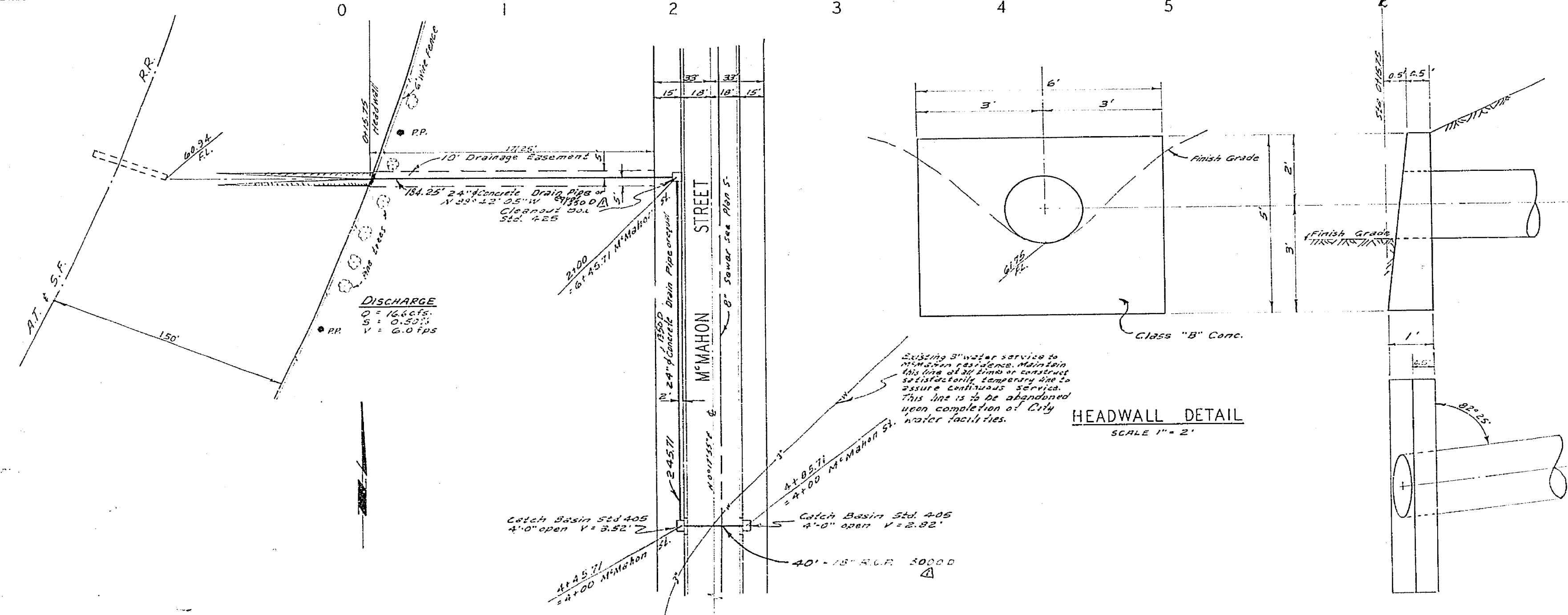


TYPICAL SECTION
DOMINION AVENUE
NO SCALE
T.I. = 5

ALBERT A. WEBB ASSOCIATES CIVIL ENGINEERS RIVERSIDE, CALIFORNIA APPROVED BY: <i>[Signature]</i> DATE: 1/9/70 R.E. No. 9972 W.O. 69-282 FOR Herbert M. Piken Co. F.B. 11/2		CITY OF RIVERSIDE, CALIFORNIA PUBLIC WORKS DEPARTMENT APPROVED BY: <i>[Signature]</i> DATE: 1/15/70 PRINCIPAL ENGINEER TRAFFIC DIVISION CHIEF PUB. WKS. ENGR.		STREET PLAN AND PROFILE DOMINION AVENUE FROM McMAHON ST TO DIVISION STREET R/S 1079 SCALE: 1"=50' Horiz., 1"=5' Vert.		ACCOUNT No. DRAWING NUMBER R-1427 SHEET 4 OF 5 69-282-A	
--	--	--	--	---	--	--	--



PROFILE SCALE
 Horiz. 1" = 20'
 Vert. 1" = 2'



ALBERT A. WEBB ASSOCIATES CIVIL ENGINEERS RIVERSIDE, CALIFORNIA APPROVED BY: <i>[Signature]</i> DATE: 4/3/70 R.E. No. 9876 W.O. 89-282 FOR: Harbor & Pylon Co. P.B. 1002		CITY OF RIVERSIDE, CALIFORNIA PUBLIC WORKS DEPARTMENT APPROVED BY: <i>[Signature]</i> DATE: 4/3/70 TRAFFIC DIVISION CHIEF PUB. WKS. ENGR.		ACCOUNT No. DRAWING NUMBER R-1427 SHEET 5 OF 5 69-282-A	
STORM DRAIN PLAN AND PROFILE M' MAHON STREET STORM DRAIN R/S 1079 SCALE: 1" = 50' Horiz. 1" = 5' Vert.			APPROVED BY: <i>[Signature]</i> DATE: 4/3/70 DIRECTOR OF PUBLIC WORKS		