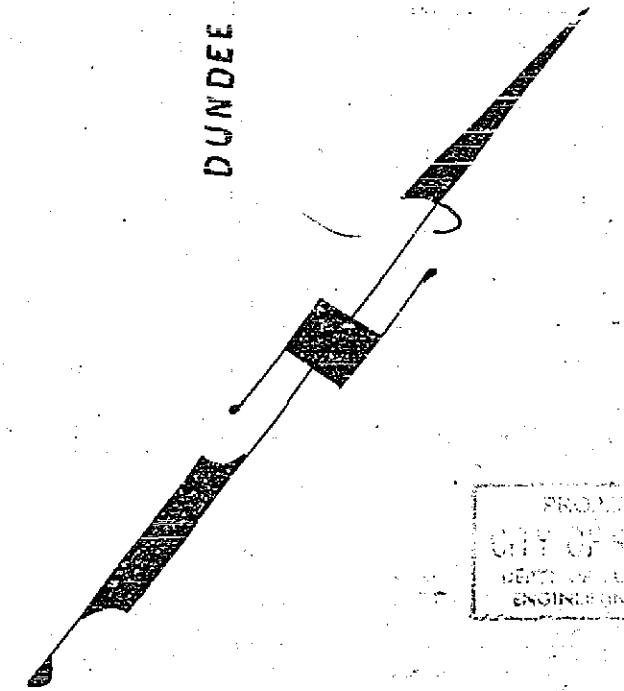
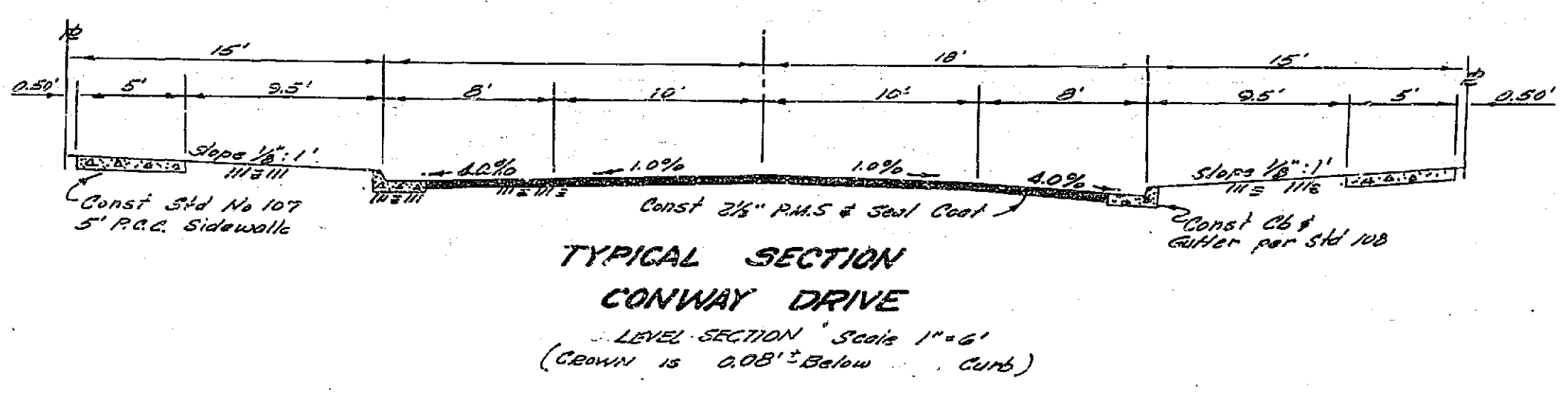
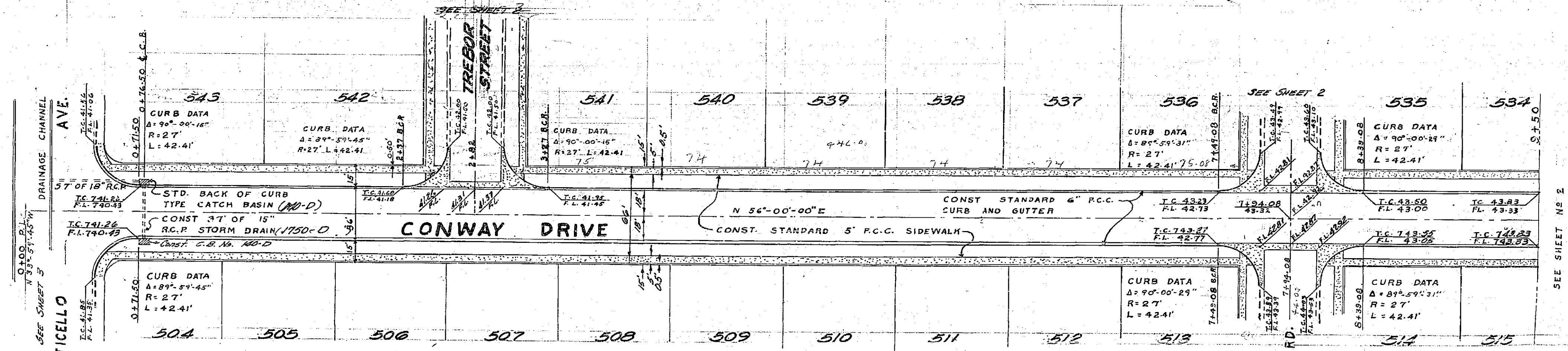


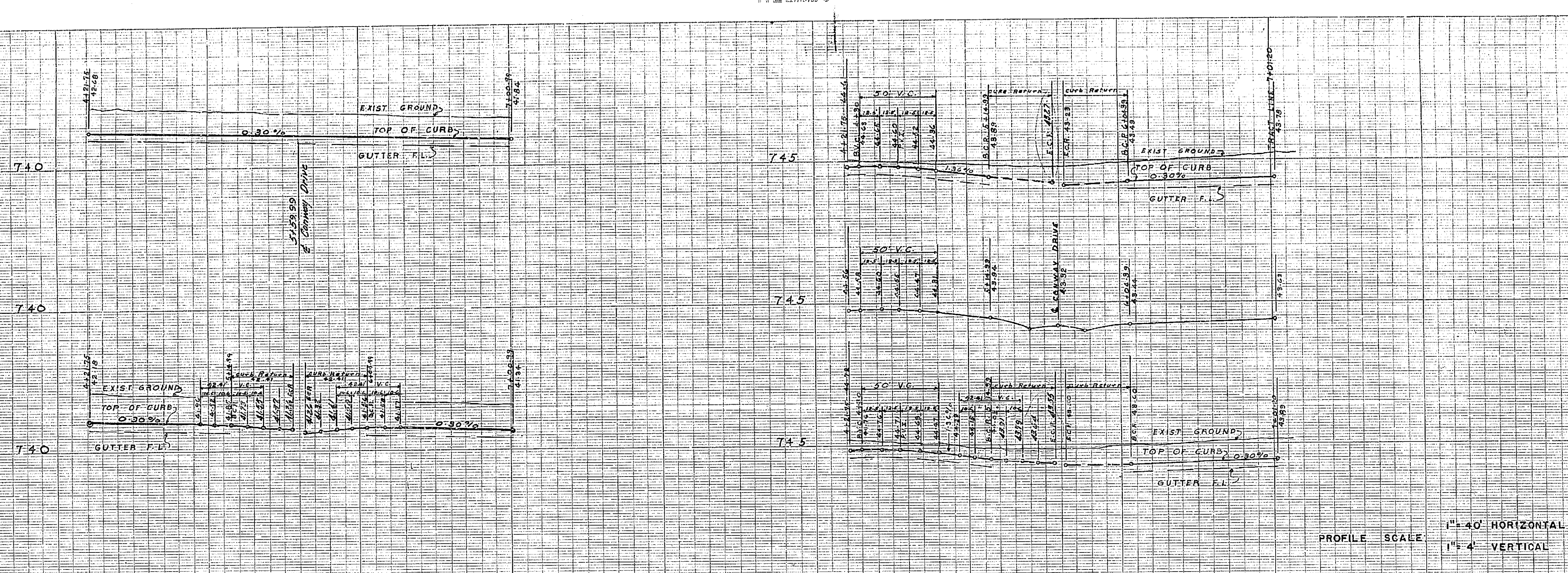
BENCH MARK
SPIKE IN P.P. 730617
COLORADO & MONROE
ELEV. 754.46

NOTE:
CATCH BASINS ARE TO BE
CITY OF RIVERSIDE STD. NO. 140-D
WITH STD. FRAME & COVER NO. 123



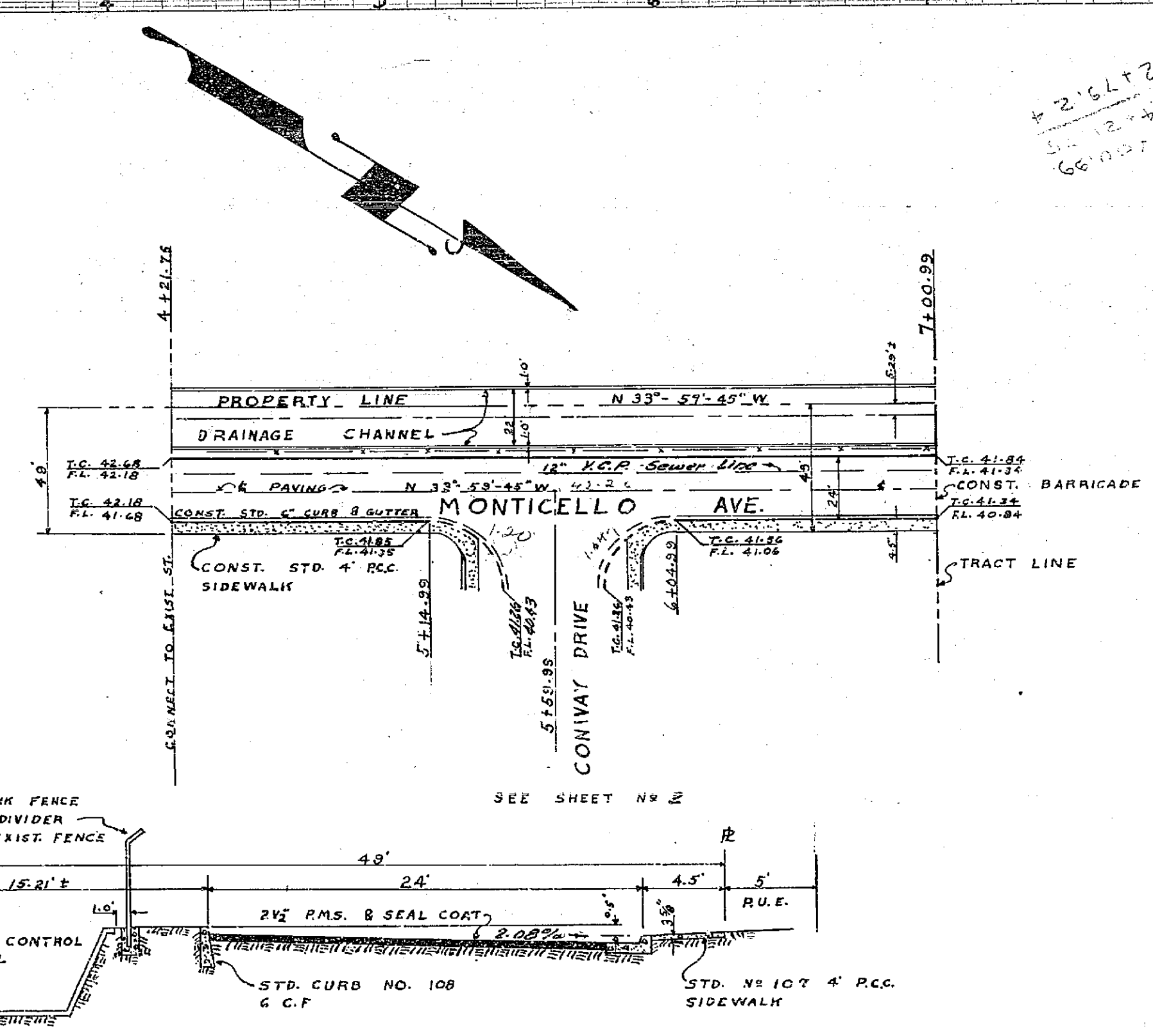
L. FREDERICK PACK
R.E. NO. 7448 COVINA, CALIF.
APPROVED *[Signature]* DATE _____
CITY OF RIVERSIDE, CALIF.
DEPT. OF PUBLIC WORKS
STREET PLAN AND PROFILE
BROCKTON HEIGHTS NO. 8
CONWAY DRIVE FROM MONTICELLO AVE
TO 90° EAST OF
MONTICELLO AVE.
HOR. SCALE: 1" = 40' VERT. SCALE: 1" = 4'
APPROVED BY *[Signature]*
DIRECTOR OF PUBLIC
WORKS
DATE Aug 21, 1957
NO. R-143
SHEET 1 OF 3

CITY OF RIVERSIDE
DEPT. OF PUBLIC WORKS
ENGINEERING DIVISION

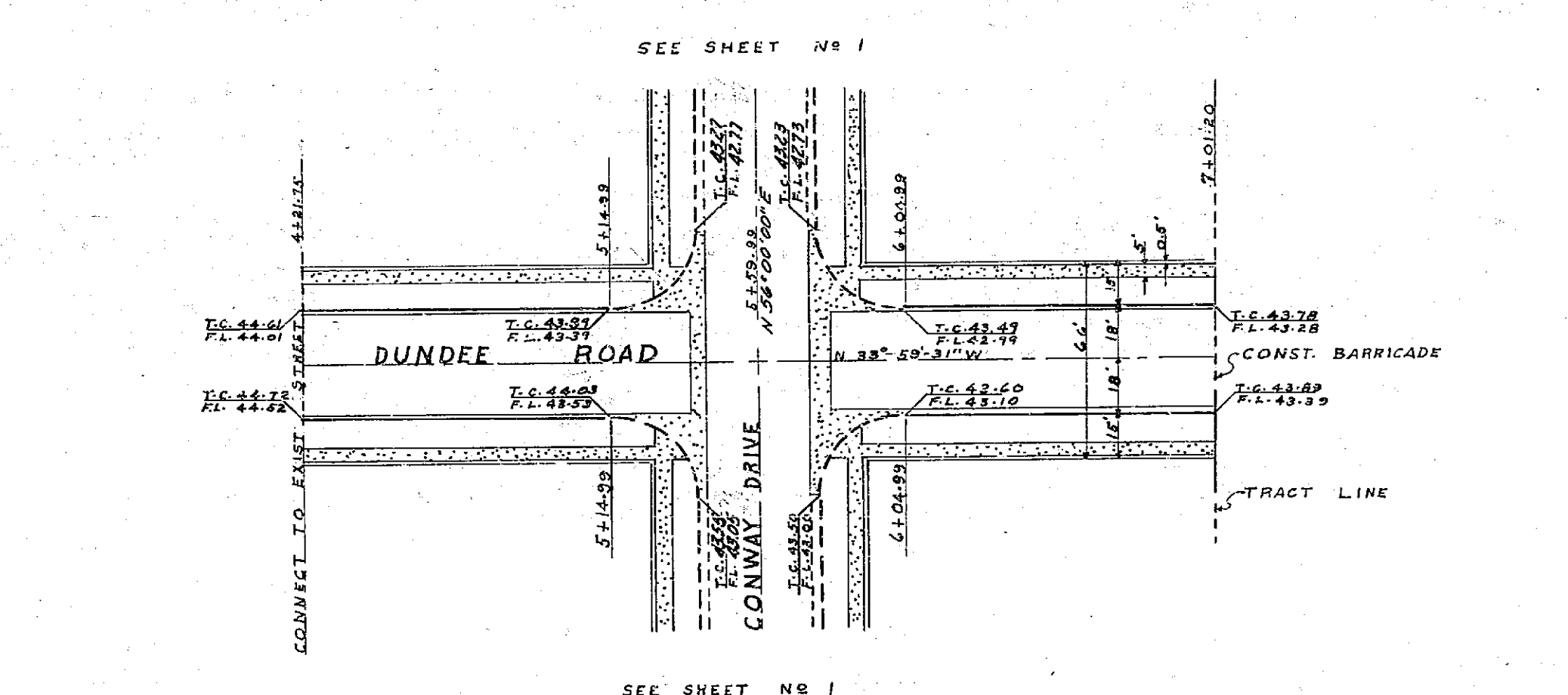


PROFILE SCALE
1" = 40' HORIZONTAL
1" = 4' VERTICAL

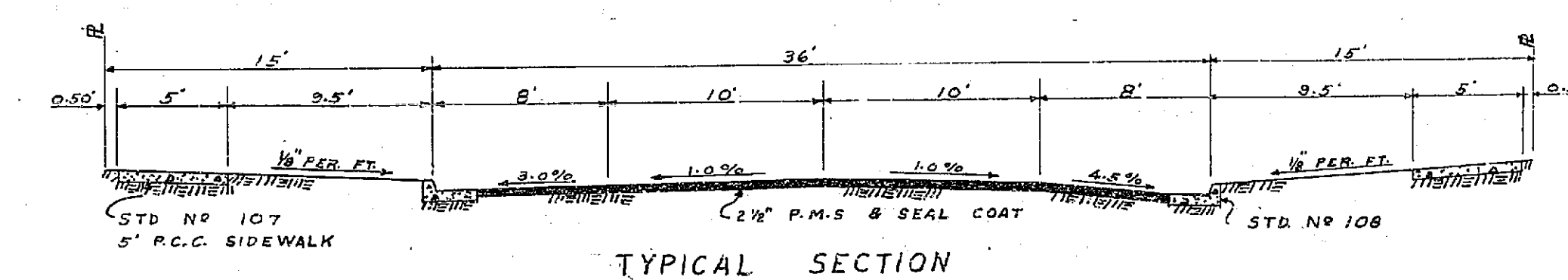
BENCH MARK
SPINE IN PP. 30417
COLORADO @ MONROE
ELEV. 754.66



TYPICAL SECTION
MONTICELLO AVENUE
SCALE: 1" = 4'



TYPICAL SECTION
DUNDEE ROAD
0.11' CROSSFALL SCALE: 1" = 4'
(CROWN IS 0.16' BELOW HIGH CURB)



L. FREDERICK PACK
R.E. 7448
COVINA, CALIFORNIA
APPROVED BY *[Signature]* DATE _____

CITY OF RIVERSIDE, CALIFORNIA
DEPARTMENT OF PUBLIC WORKS
STREET PLAN & PROFILE
BROCKTON HEIGHTS NO. 8

MONTICELLO AVE FROM STA. 4+21.75
TO: STA. 7+00.00
DUNDEE ROAD FROM: STA. 4+21.75
TO: STA. 7+01.20

HOR. SCALE 1" = 40' VERT. SCALE 1" = 4'

APPROVED BY *[Signature]*
DIRECTOR OF PUBLIC WORKS
DATE Aug 21, 1967

NO. **R-143**
SHEET 3 OF 3