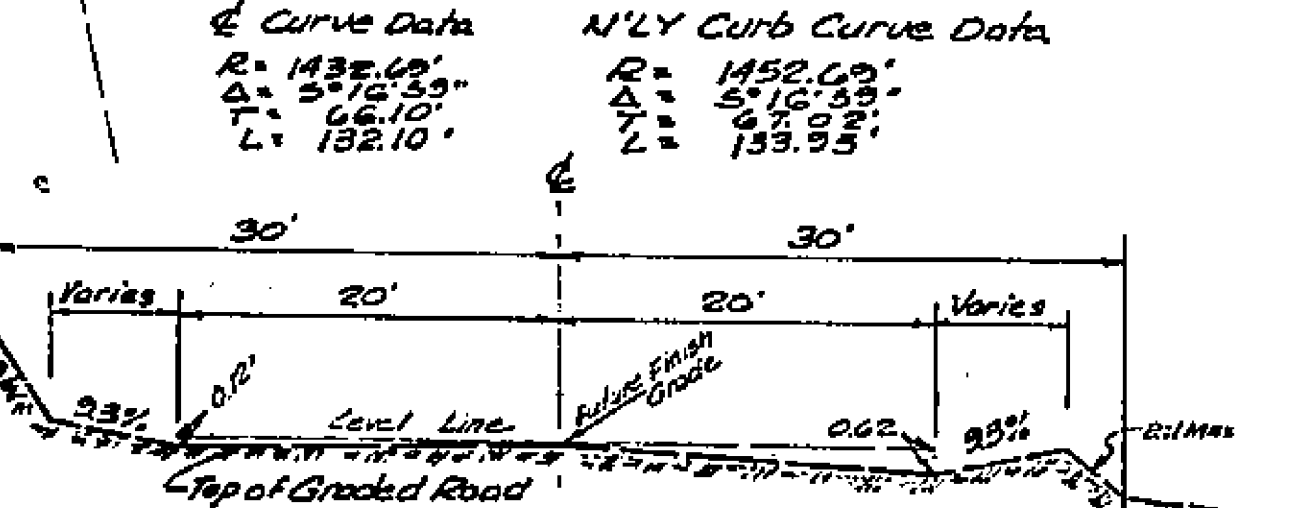
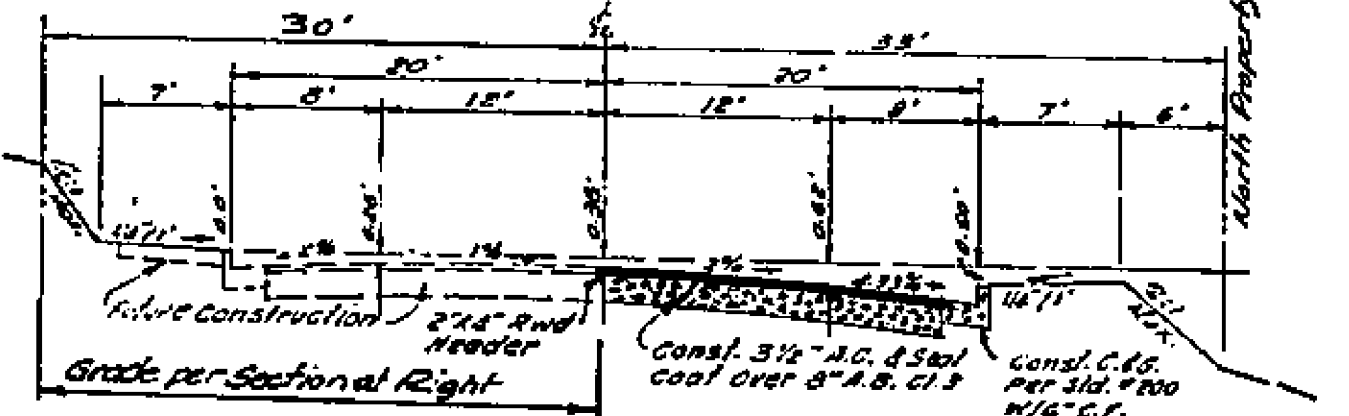


- GENERAL NOTES**
1. It shall be the responsibility of the Contractor to clear the right of way in accordance with the provisions of law as it affects each utility including irrigation lines and appurtenances and at no cost to the City.
 2. Construction shall be in accordance with the City of Riverside, Department of Public Works, Specifications No. 461 and Standard Drawings.
 3. Prime coat, seal coat, and paint binder are required.
 4. Pavement shall not be placed until the sewer as shown on S-809 is constructed.



BEUCH MARK
 R.R. Spike in pole No. 15107-J @
 N.E. Corner of Industrial Ave.
 & Fremont St. K.B. 385/71
 Elevation 777.10
 (Note: This B.M. is not on current City
 datum. City Elev. = 776.91' per "R.R. Spike")

J. F. DAVIDSON ASSOCIATES CIVIL ENGINEERS - SURVEYORS - PLANNERS RIVERSIDE, CALIFORNIA APPROVED BY: <i>Robert J. Davidson</i> DATE: 9-16-70 R.E. No. 13264 W.D. 2704 FOR RIVERSIDE P.W. CO. 7-21-70	CITY OF RIVERSIDE, CALIFORNIA DEPARTMENT OF PUBLIC WORKS APPROVED BY: <i>William S. Anderson</i> OFFICE ENGINEER PARK DEPARTMENT TRAFFIC DIVISION ASSISTANT CITY ENG.	STREET PLAN AND PROFILE COLUMBUS AVENUE NORTH SIDE - REPUBLIC ST. TO 125 FT. EAST BUILDING PERMIT 6291 COLUMBUS	PROJECT NO. R-1457 SHEET 1 OF 1 FILE NO. 3392
		DESIGNED BY: <i>M</i> DRAWN BY: <i>M</i> CHECKED BY: <i>M</i> DATE: 11/25/70 HORIZ. SCALE: 1" = 20' VERT. SCALE: 1" = 4'	