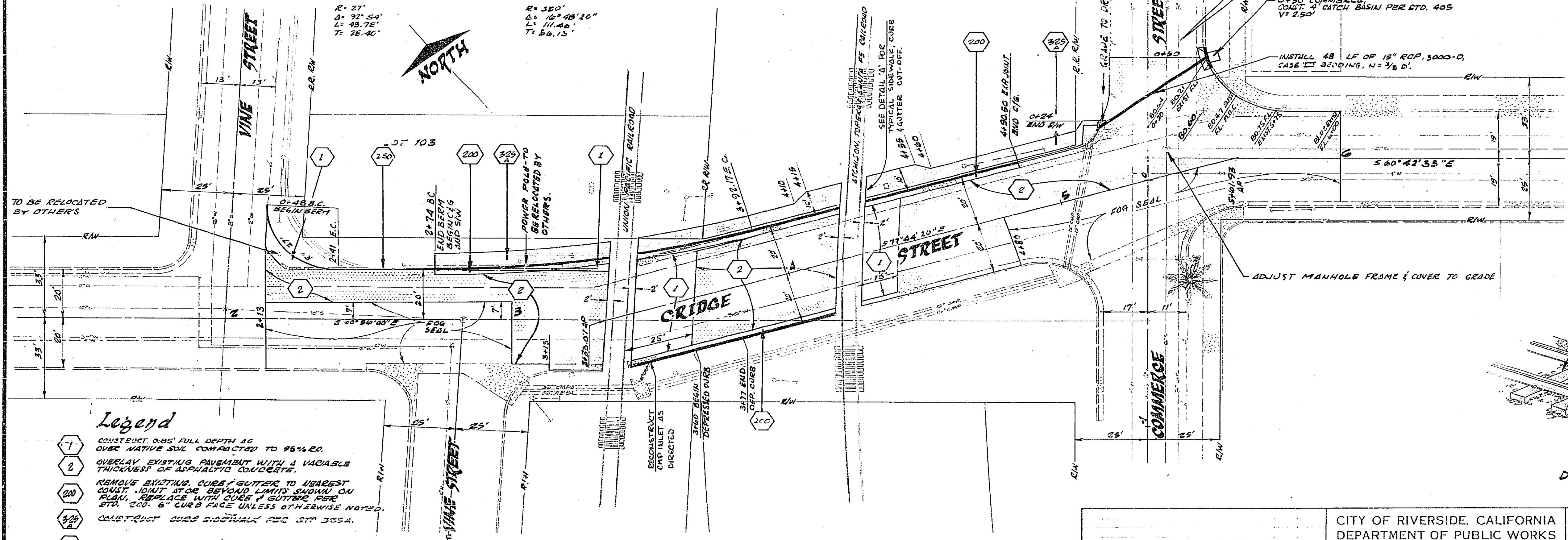


BERM CURVE DATA

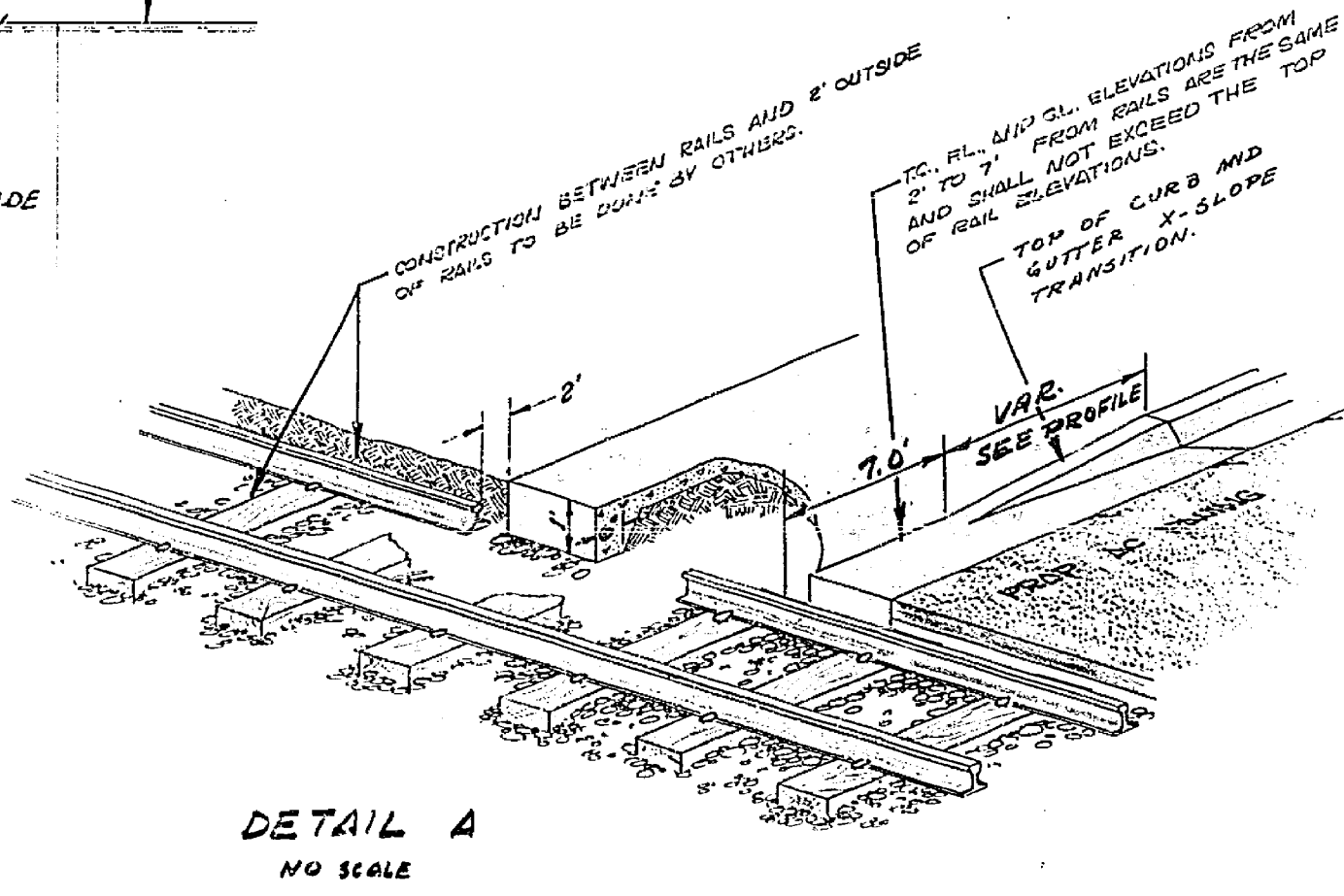
R = 27'	Δ = 92° 54'	T = 26.40'
Δ = 92° 54'	L = 48.76'	T = 26.40'

T.C. CURVE DATA

R = 500'	Δ = 10° 48' 20"	T = 86.12'
Δ = 10° 48' 20"	L = 111.48'	T = 86.12'



- Legend**
- ① CONSTRUCT CURB FULL DEPTH TO 95% ED. OVER NATIVE SOIL COMPACTED TO 95% ED.
 - ② OVERLAY EXISTING PAVEMENT WITH A VARIABLE THICKNESS OF ASPHALTIC CONCRETE.
 - ③ REMOVE EXISTING CURB & GUTTER TO NEAREST CURB INLET AND BEYOND LIMITED SIGNATURE ONLY. REPLACE WITH CURB & GUTTER PER STD. 200. 6" CURB FACE UNLESS OTHERWISE NOTED.
 - ④ CONSTRUCT CURB SIDEWALK PER STD. 305A.
 - ⑤ CONSTRUCT BERM PER STD. 250.



F.B. 923/68-77
 B.M. CHAIN ON E. END HEAD- WALL OVER SIGNAL SO. SIDE OF CURB BET. OLIVEWOOD AND VINE. ELEV. 875.140 MSL

CITY OF RIVERSIDE, CALIFORNIA DEPARTMENT OF PUBLIC WORKS		PROJECT NO. 312	
APPROVED BY: [Signature]		APPROVED BY: [Signature]	
DATE: 6-14-71		DATE: 6-14-71	
DESIGNED BY: [Name]		DRAWN BY: [Name]	
CHECKED BY: [Name]		FILE NO.	

Cridge Street at U.P. and AT&T RR.

R-1467

SHEET 001 OF 002

HORIZ. SCALE: 1" = 20' VERT. SCALE: 1" = 4'