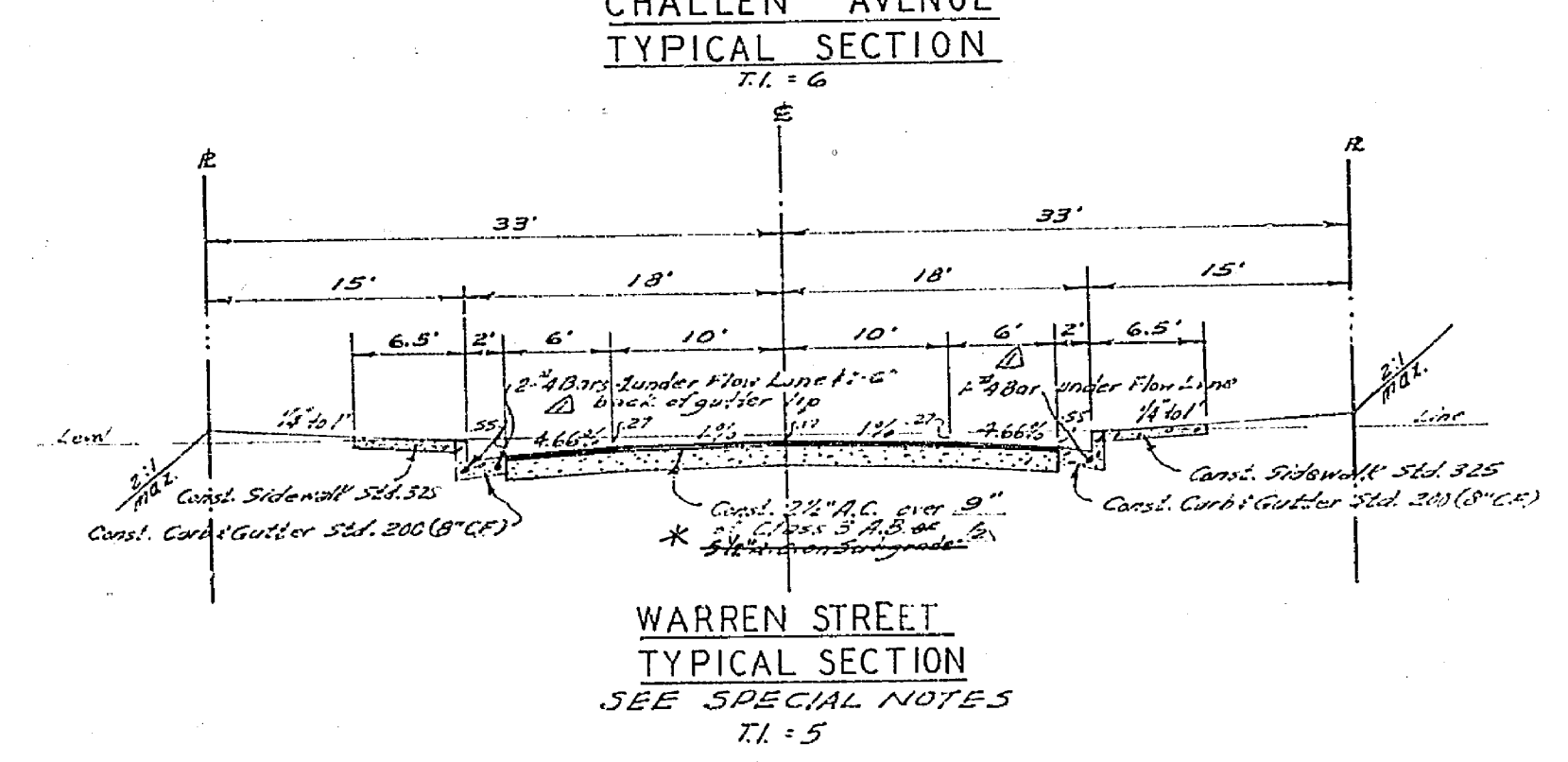
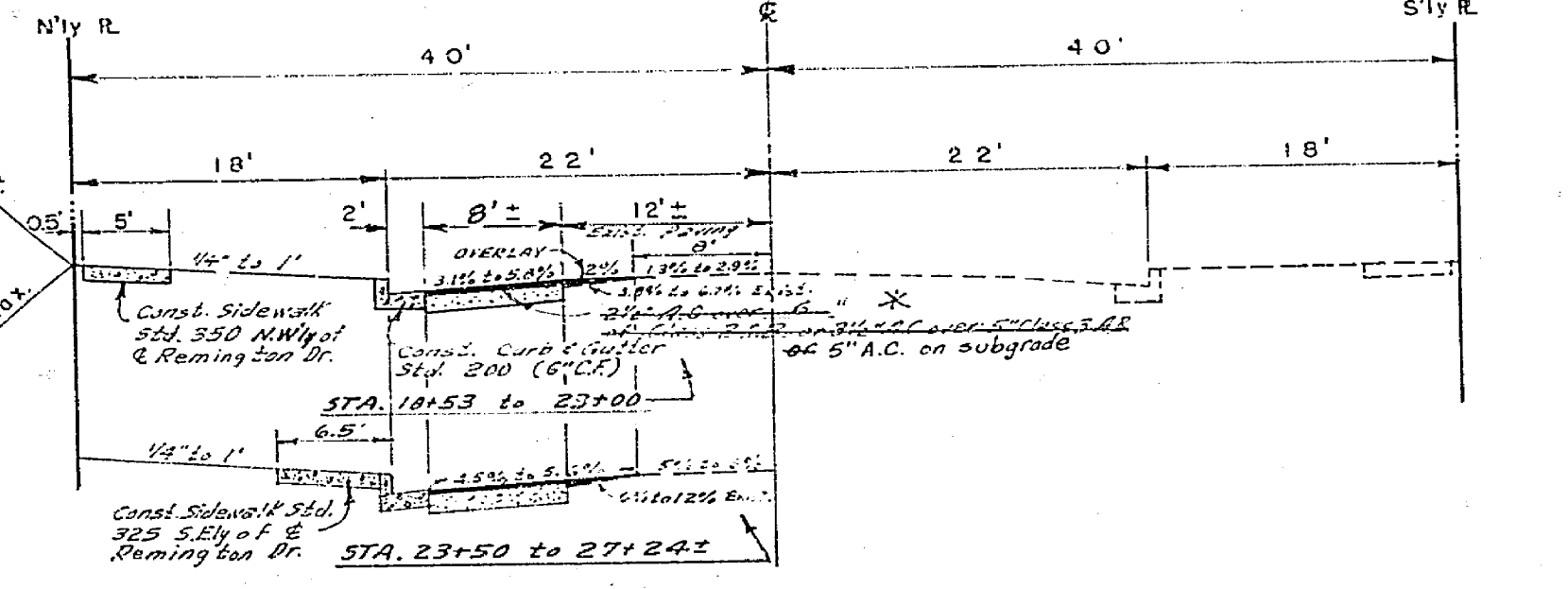
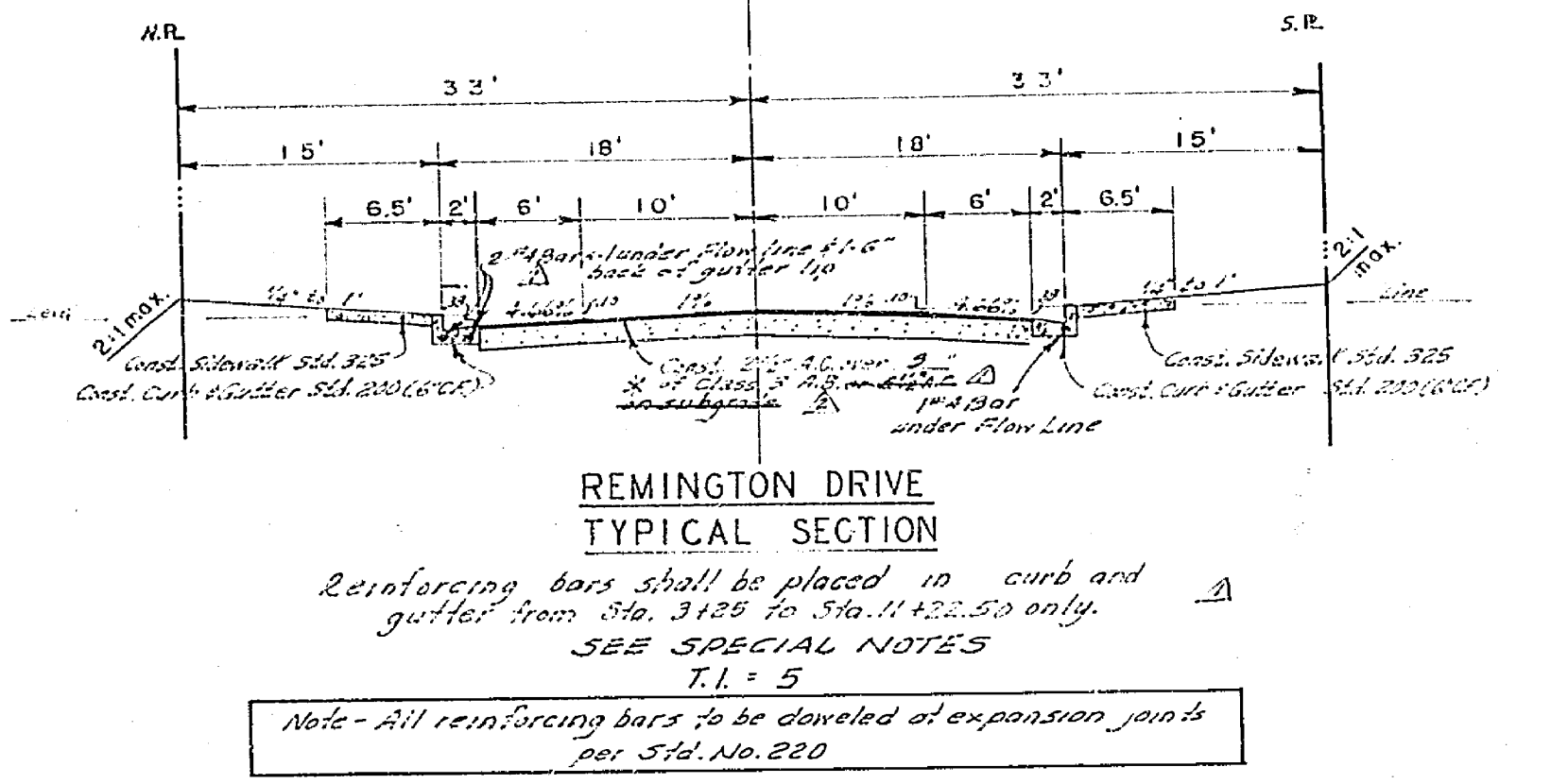
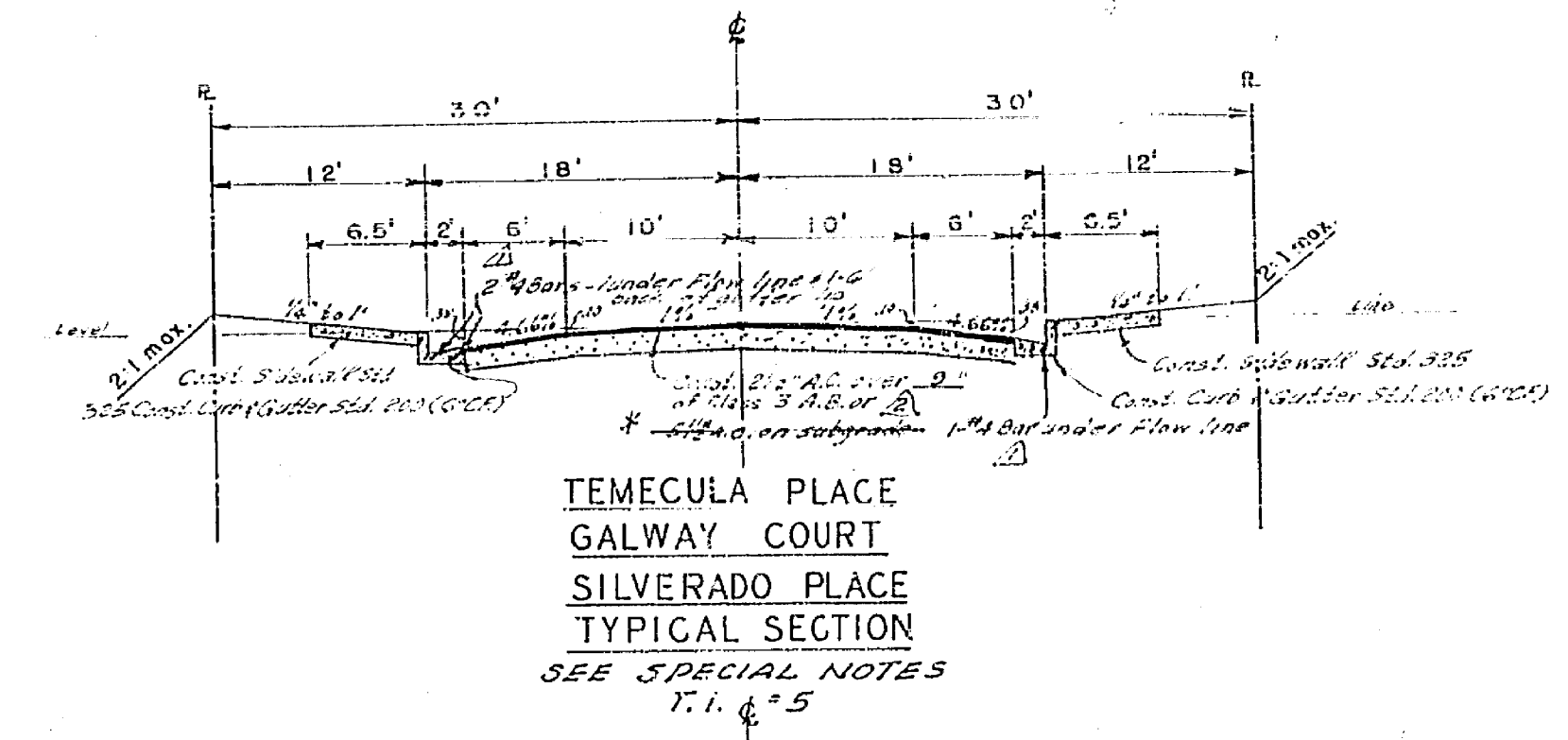


SCALE 1" = 100'

INDEX MAP

STREET NAME SCHEDULE		
A	CHALLEN AVE	4700
	REMINGTON DR	7900
B	REMINGTON DR	7900
	WARREN ST	4500
C	WARREN ST	4500
	SILVERADO PL	7900
D	WARREN ST	4500
	GALWAY CT	7900
E	WARREN ST	4600
	TEMECULA PL	7900
	REMINGTON DR	7800
F	WARREN ST	4700

- SPECIAL NOTES**
- The Contractor shall place base material under curb & gutter, wherever shown on Typical Sections. The base material shall be 6" in depth or level with the bottom of the base material under the A.C. pavement, whichever is greater.
 - The degree of compaction for the base material under the curb and gutter shall be the same as the material under the A.C. pavement.
 - If any loosening of compacted material occurs during the setting of the curb forms, or loose material falls onto the base material, all such loose material shall be removed and concrete poured on properly compacted base material only.
 - After curbs and gutters have been poured and the forms removed, the gutters shall be water tested to ensure the City that they all drain properly.
 - The Engineer shall set construction stake on 12.50' maximum stations for all curb & gutter having a grade less than 0.50%.



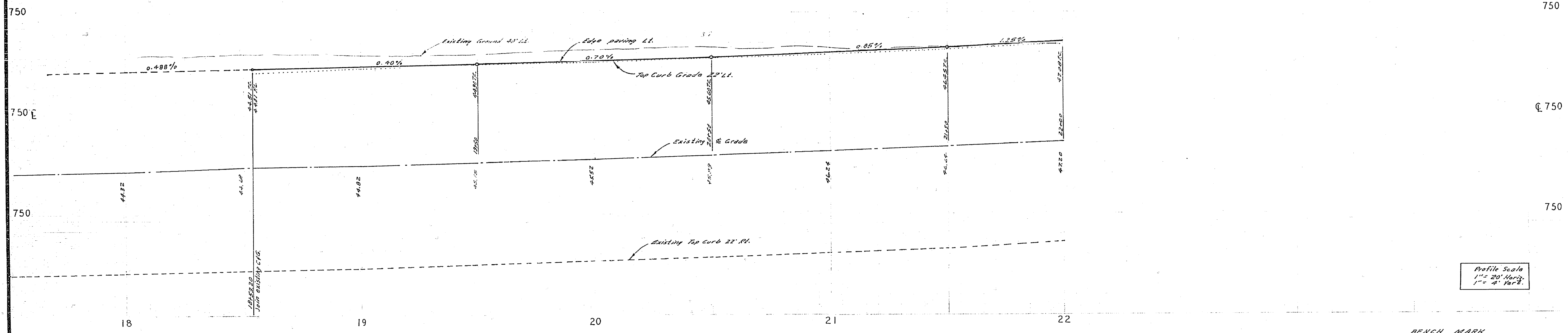
- 836
- and traffic control signs and posts to be furnished and installed by the Contractor.
- Driveway Approaches for each lot to be located in the field and to be const. Per City of Riverside Standard No. 302.
 - All "Flag" elevations shall be staked in the field by the Engineer.
 - The amount of asphalt overlay on existing pavement has been estimated by the Engineer to be approximately 39 tons.

FUTURE CONST.	QUANTITY ESTIMATE	PRESENT CONST.
37 L.F. Curb (Gutter Standard No. 200 (6" CF))		2,854 L.F.
Curb (Gutter Standard No. 200 (8" CF))		1,574 L.F.
2,232 S.F. Sidewalk Standard No. 325		23,251 S.F.
Sidewalk Standard No. 350		1,489 S.F.
6,027 S.F. 2 1/2" A.C. paving		69,582 S.F.
Cross Gutter Standard No. 220		3,570 S.F.
2"x4" Redwood Header		193 L.F.
Barricade Standard No. 180 (6)		378 L.F.
Driveway Approaches Standard No. 302		61 EQ.
2 Ea. Catch Basin Std. No. 405		70,102 S.F.
6,027 S.F. Class B Base Material		
Asphalt Overlay		39 TON

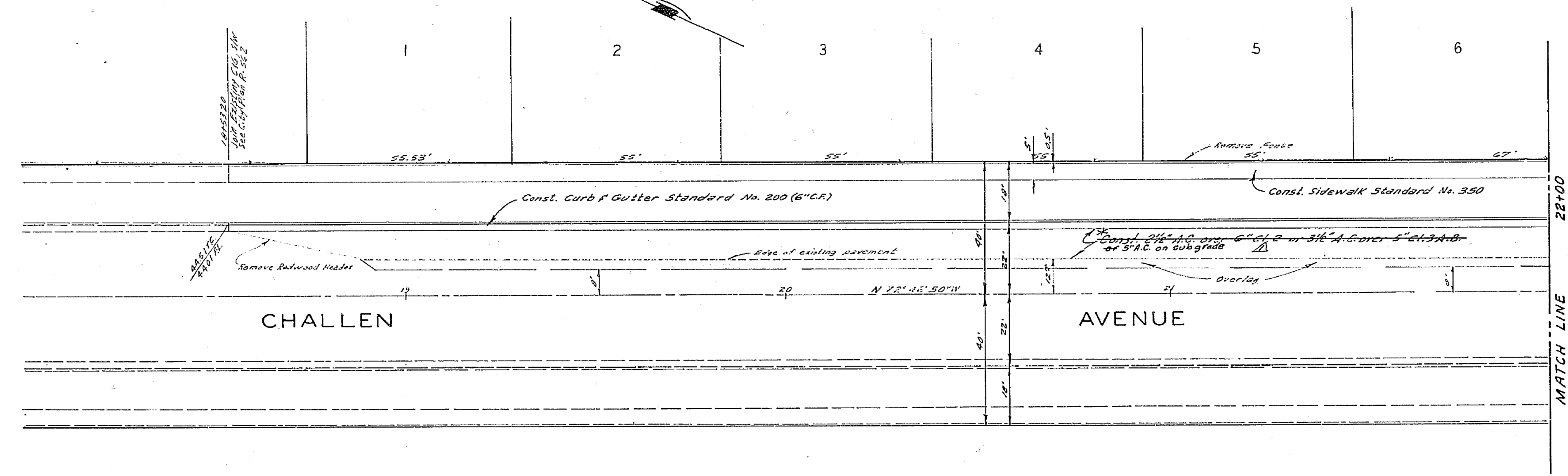
NOTE
Quantity Estimate made by Engineer for Bidding only and the City of Riverside, by approving the plans, does not guarantee the quantities accuracy.

* AS BUILT 2-7-72 KARL

ALBERT A. WEBB ASSOCIATES CIVIL ENGINEERS RIVERSIDE, CALIFORNIA APPROVED BY: <i>[Signature]</i> DATE: 12/11/71 R.E. No. 2276 W.O. 21-237 FOR Wood's 101 Developers F.B. 102	APPROVED BY: <i>[Signature]</i> DATE: 5/21/71 OFFICE ENGINEER PARK DEPARTMENT TRAFFIC DIVISION ASSISTANT CITY ENG.	CITY OF RIVERSIDE, CALIFORNIA DEPARTMENT OF PUBLIC WORKS		PROJECT NO. R-1470
		STREET PLAN AND PROFILE INDEX MAP - NOTES TYPICAL SECTIONS TRACT 4146		SHEET 1 OF 5 FILE NO. 70-237-A
DESIGNED BY: <i>[Signature]</i>	DRAWN BY: <i>[Signature]</i>	CHECKED BY: <i>[Signature]</i>	HORIZ. SCALE: 1" = 100' VERT. SCALE: 1" = 10'	

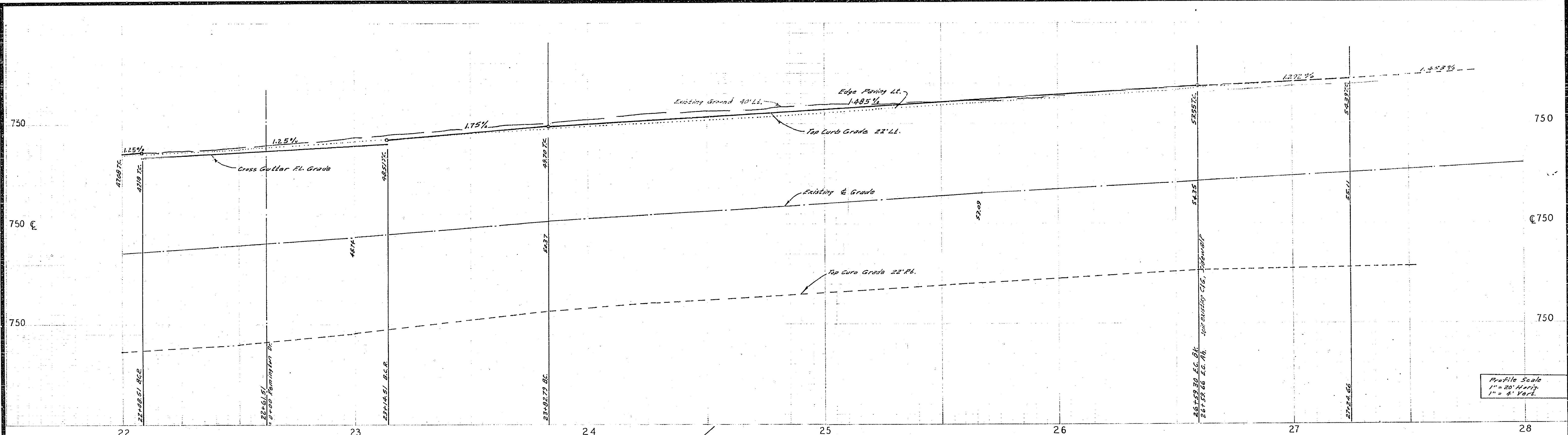


BENCH MARK
 1. Elev. 752.650, 5/2 on S.W. Curb return Sequoia St. & Challen Ave. City P.D. 390/33.
 2. Elev. 752.297, Chisel X on the conc. H.W. most Ely end south side Challen Ave Sta. 391.60*



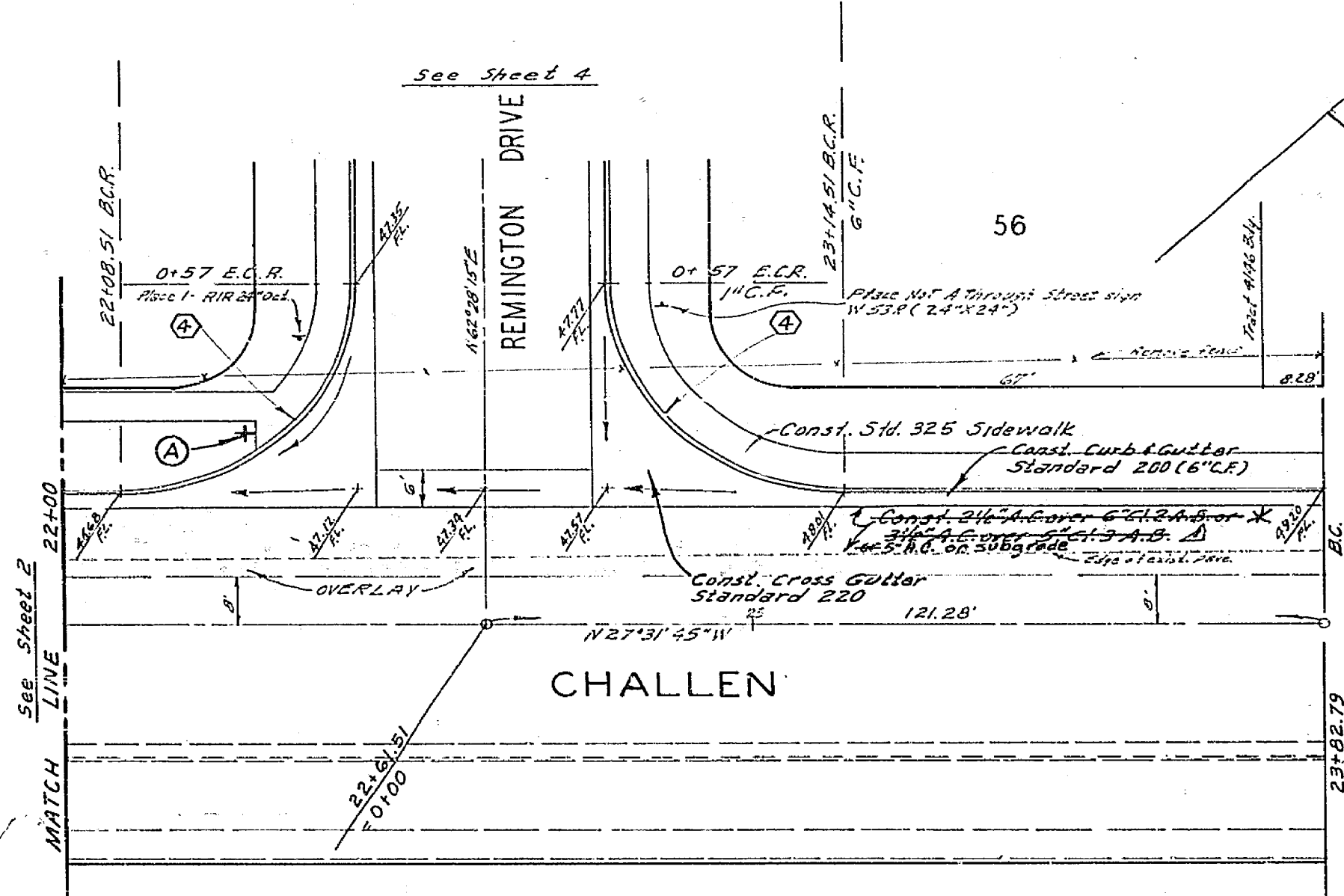
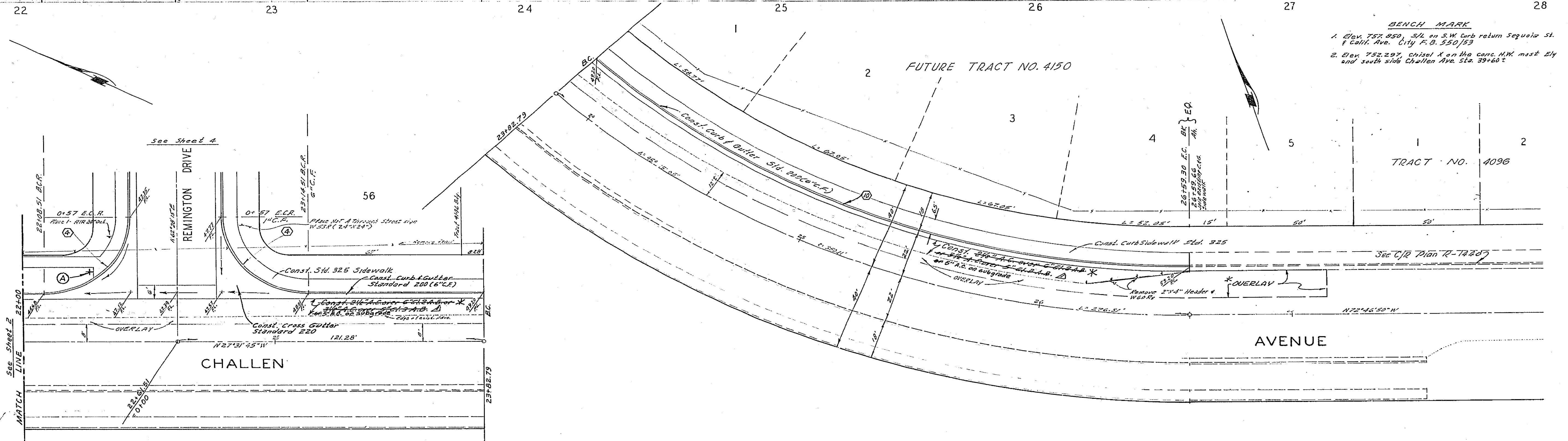
* AS BUILT 2-7-72 LWB

ALBERT A. WEBB ASSOCIATES CIVIL ENGINEERS RIVERSIDE CALIFORNIA		CITY OF RIVERSIDE, CALIFORNIA DEPARTMENT OF PUBLIC WORKS		STREET PLAN AND PROFILE		PROJECT NO.
APPROVED BY: <i>[Signature]</i> DATE 12/11/70 R.F. NO. 9276		APPROVED BY: <i>[Signature]</i> DIRECTOR OF PUBLIC WORKS		CHALLENGE AVENUE		R-1470
DESIGNED BY: _____ DRAWN BY: AEL CHECKED BY: REC		DATE 5/21/71		TRACT 4146		SHEET 2 OF 5
NO. 70-237-104 Woodhuren Developments F.B. 200		HORIZ. SCALE: 1" = 20'		VERT. SCALE: 1" = 4'		FILE NO. 70-237-A



Profile Scale
1" = 20' Horiz.
1" = 4' Vert.

- BENCH MARK**
- Elev. 757.850, S.M. on S.W. Curb return Sequoia St. & Challen Ave. City F.D. 550/53
 - Elev. 752.297, Chisel X on the conc. M.W. next Ely and south side Challen Ave. Sta. 39+60.2

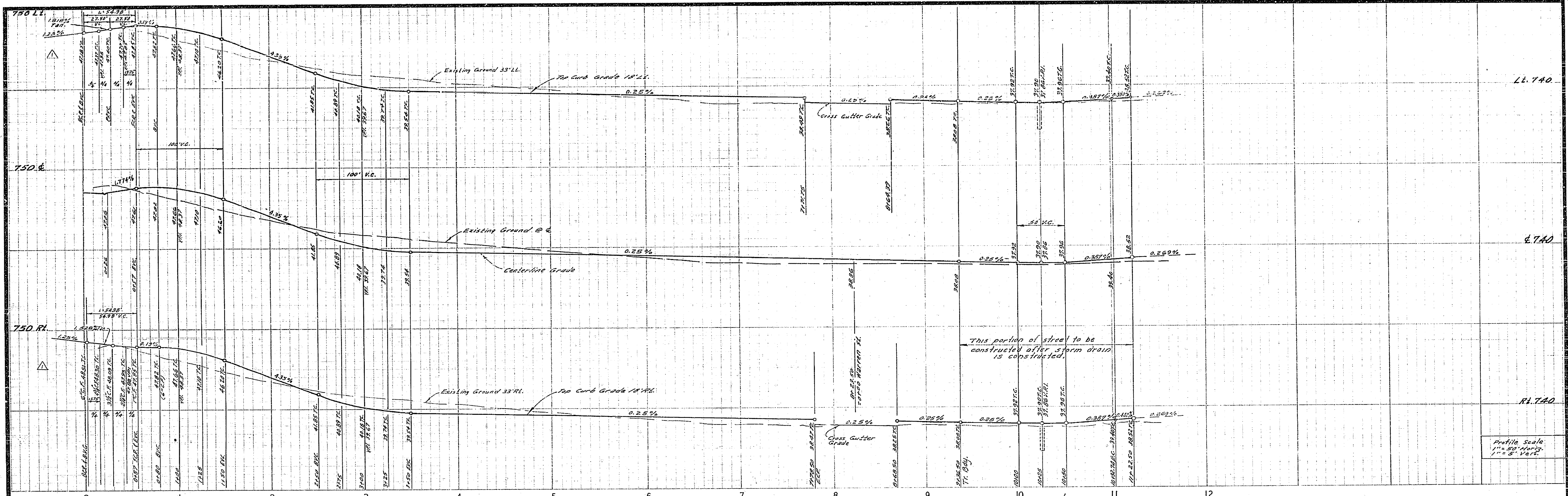


CURB RETURN DATA

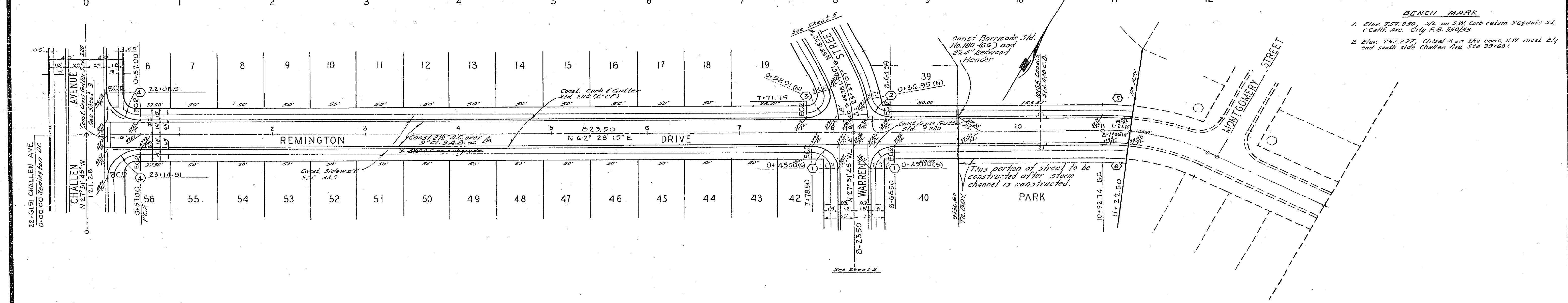
Station	Angle (A)	Radius (R)	Length (L)	Tangent (T)
22+00	90° 00' 00"	35'	54.98'	35.00'
22+50	45° 15' 05"	328.11'	259.14'	136.75'

ALBERT A. WEBB ASSOCIATES CIVIL ENGINEERS RIVERSIDE, CALIFORNIA		CITY OF RIVERSIDE, CALIFORNIA PUBLIC WORKS DEPARTMENT		ACCOUNT NO. DRAWING NUMBER R-1470
APPROVED BY: <i>[Signature]</i> DATE: 12/11/70 R.E. No. 9976		APPROVED BY: <i>[Signature]</i> DIRECTOR OF PUBLIC WORKS DATE: 5/21/71		SHEET 3 OF 5 70-237-A
W.O. 70-237 FOR: Woodhaver Developers F.B. 1968		DESIGNED BY: BEL. DRAWN BY: BEL. CHECKED BY: BEL.		SCALE: 1" = 20' Horiz., 1" = 4' Vert.

*AS BUILT 2-7-78 LKPL



Profile Scale
1" = 50' Horiz.
1" = 5' Vert.



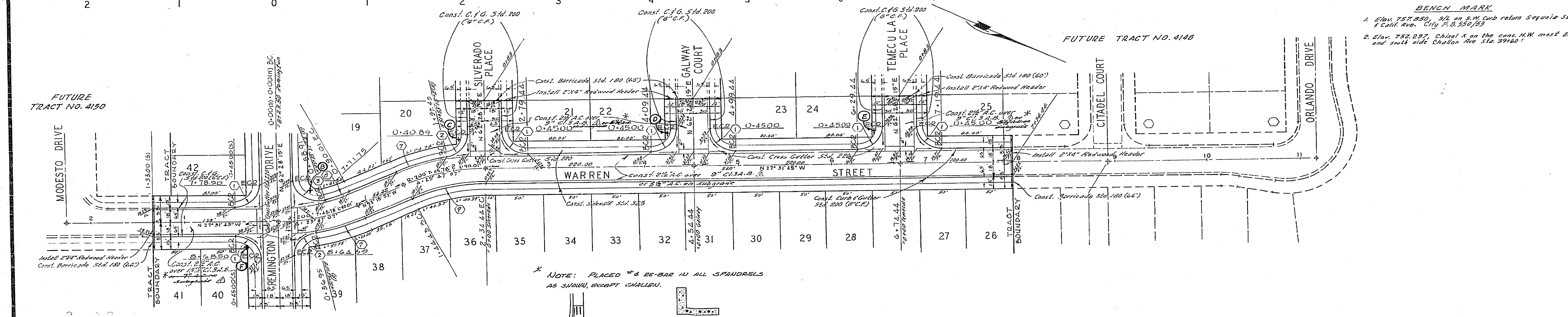
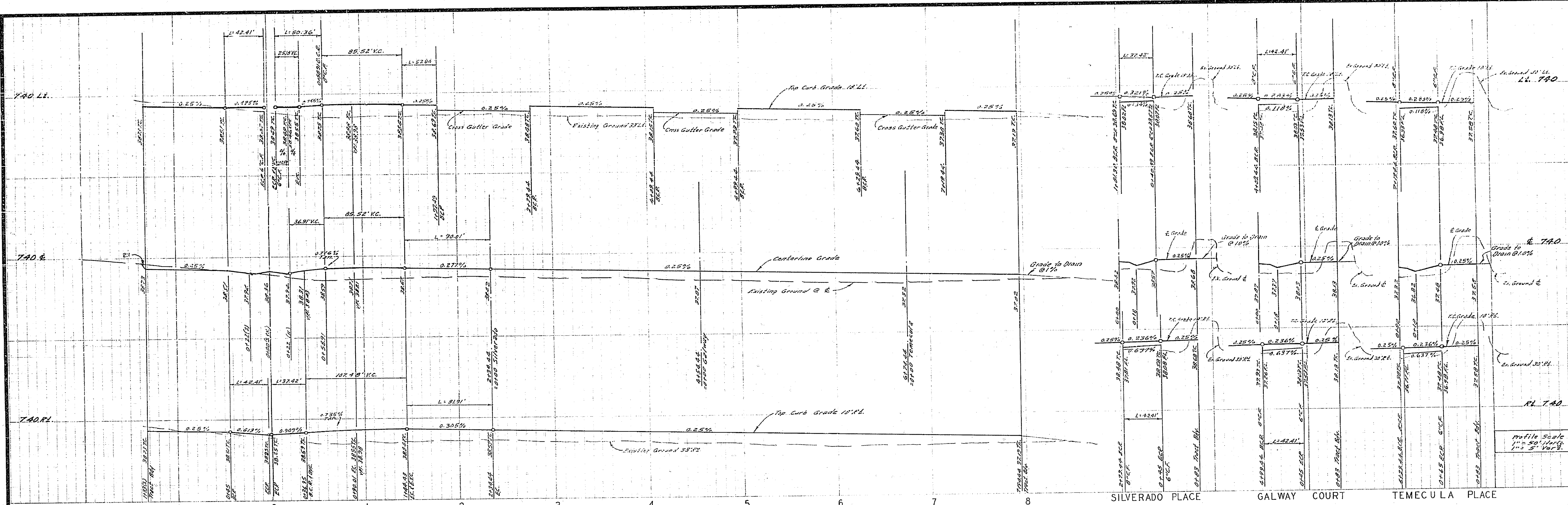
BENCH MARK
 1. Elev. 757.030, 5/2 on 3/4" curb return Sequoia St. & Challen Ave. City P.D. 350653
 2. Elev. 752.297, Challen Ave on the conc. N.W. most Ely and south side Challen Ave. Sta. 39140

CURB RETURN DATA

Station	Δ	R	L	T
①	90° 00' 00"	27'	42.41'	27.00'
②	79° 24' 58"	27'	37.42'	22.42'
③	106° 52' 38"	27'	50.36'	36.41'
④	90° 00' 00"	35'	54.98'	35.00'
⑤	07° 06' 12"	258'	31.99'	15.81'
⑥	07° 06' 14"	222'	27.52'	13.78'

ALBERT A. WEBB ASSOCIATES CIVIL ENGINEERS RIVERSIDE, CALIFORNIA APPROVED BY: <i>[Signature]</i> DATE: 12/11/70 R.E. No. 5826 W.G. 70-237 FOR: Woodhaven Developers F.B. 1013		CITY OF RIVERSIDE, CALIFORNIA PUBLIC WORKS DEPARTMENT APPROVED BY: <i>[Signature]</i> DATE: 5/11/71 PRINCIPAL ENGINEER PARK DEPARTMENT TRAFFIC DIVISION CHIEF PUB. WKS. ENGR. DATE: 5/21/71		STREET PLAN AND PROFILE REMINGTON DRIVE TRACT 4146 SCALE: 1" = 50' Horiz., 1" = 5' Vert.		ACCOUNT No. DRAWING NUMBER R-1470 SHEET 4 OF 5 70-237-A	
--	--	--	--	--	--	--	--

* AS BUILT 2-7-78 KREL



BENCH MARK
 1. Elev. 757.850, 5 ft. on S.W. curb return Sequoia St. & Calif. Ave. City P.D. 550/53
 2. Elev. 752.297, Chisel X on the const. H.W. most Ely and south side Chollon Ave Sta. 39160'

CURB RETURN DATA

Station	Angle	R	L	T
1	90°00'00"	27'	42.41'	27.00'
2	79°24'58"	27'	37.42'	22.42'
3	106°52'38"	27'	50.96'	36.41'
4	15°12'05"	218'	57.84'	2309'
5	08°54'29"	182'	28.30'	14.18'
6	25°47'27"	102'	81.21'	41.66'

* NOTE: PLACED #4 & #6-BAR IN ALL SPANDRELS AS SHOWN, EXCEPT CHALLENGE.

* SECTION A-A

* AS BUILT 2-7-76 12002.

ALBERT A. WEBB ASSOCIATES CIVIL ENGINEERS RIVERSIDE, CALIFORNIA APPROVED BY: <i>[Signature]</i> DATE: 12/1/76 RE. No. 9876 W.O. No. 237 FOR: Woodshore Developer's	CITY OF RIVERSIDE, CALIFORNIA PUBLIC WORKS DEPARTMENT APPROVED BY: <i>[Signature]</i> DATE: 5/21/77 DIRECTOR OF PUBLIC WORKS	STREET PLAN AND PROFILE WARREN STREET SILVERADO PLACE GALWAY COURT TEMECULA PLACE TRACT 4146 SCALE: 1" = 50' Horiz., 1" = 5' Vert.	ACCOUNT NO. DRAWING NUMBER R-1470 SHEET 5 OF 5 10-237-A
		DESIGNED BY: <i>[Signature]</i> DRAWN BY: <i>[Signature]</i> CHECKED BY: <i>[Signature]</i>	