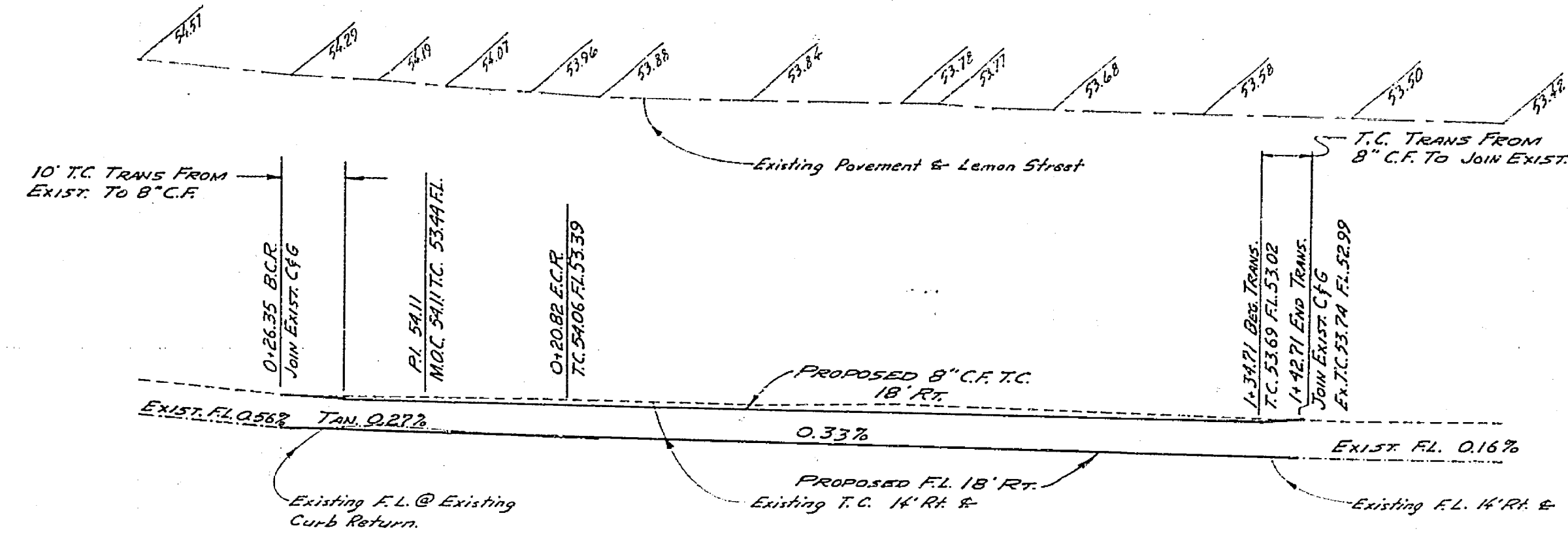


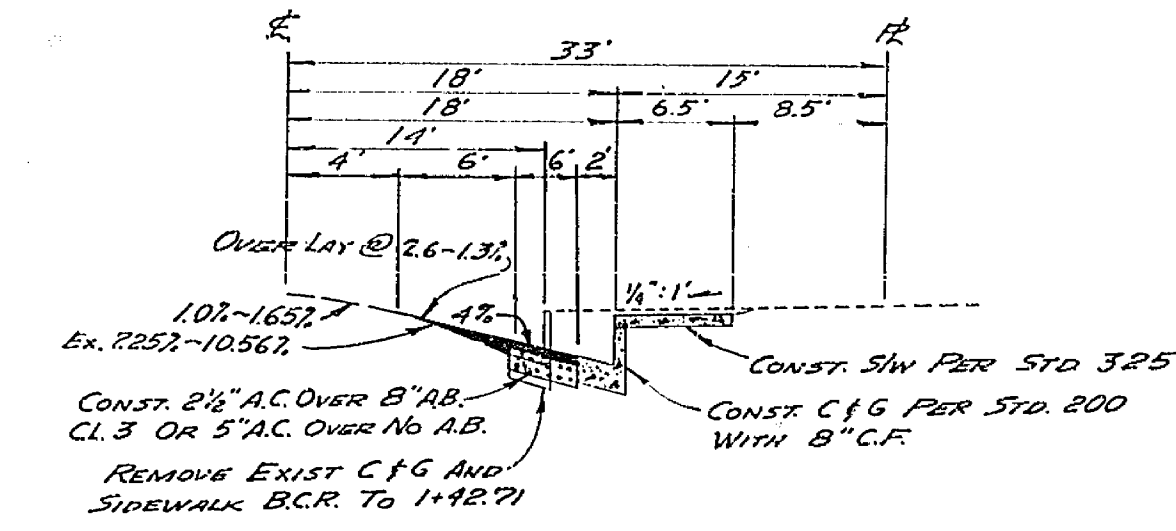
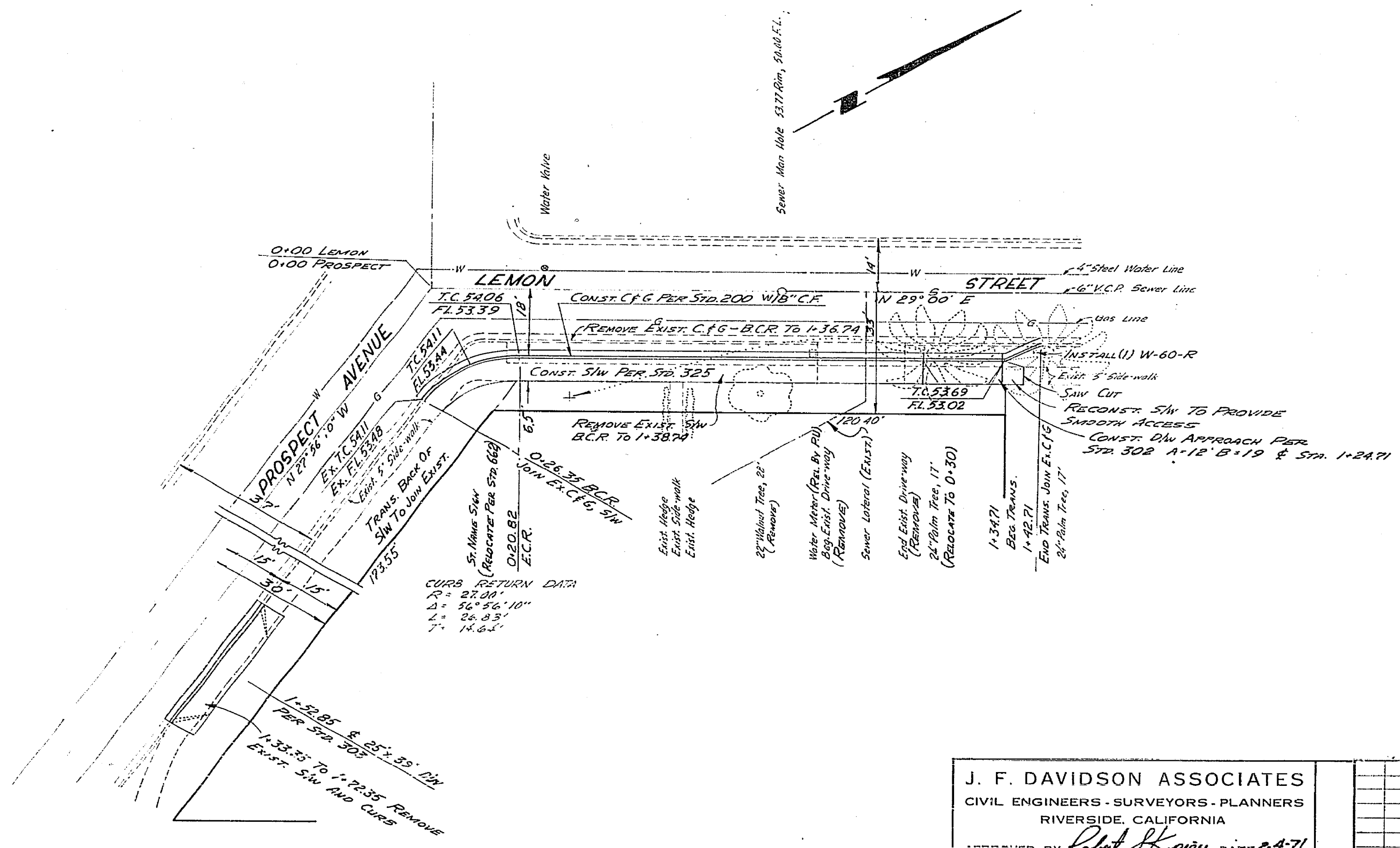
854
853
855
854



B.M. 854.289
STEEP PIN IN CURB 15' WLY
CURB SET AT THIS CORNER
MULBERRY ST PROSPECT

T.B.M. 853.68
CHS II ON M.O.C. N.W. COR
PROSPECT & LEMON

GENERAL NOTES:
Construction shall be in accordance with the Standard Specifications for Public Works construction, 1970 Edition and City of Riverside Standard Drawings.



TYPICAL SECTION
LEMON STREET
NO. SCALE
1" = 50'

J. F. DAVIDSON ASSOCIATES
CIVIL ENGINEERS - SURVEYORS - PLANNERS
RIVERSIDE, CALIFORNIA

APPROVED BY: *[Signature]* DATE: 2-4-71
R.E. No. 13855

MARK	REVISIONS	APP'D.	DATE

CITY OF RIVERSIDE, CALIFORNIA
DEPARTMENT OF PUBLIC WORKS

APPROVED BY: *[Signature]* DATE: 4/22/71
DIRECTOR OF PUBLIC WORKS

STREET PLAN AND PROFILE
LEMON STREET
EAST SIDE
PROSPECT TO 150' N'LY
C-22-690

PROJECT NO.
R-1478

SHEET 1 OF 1