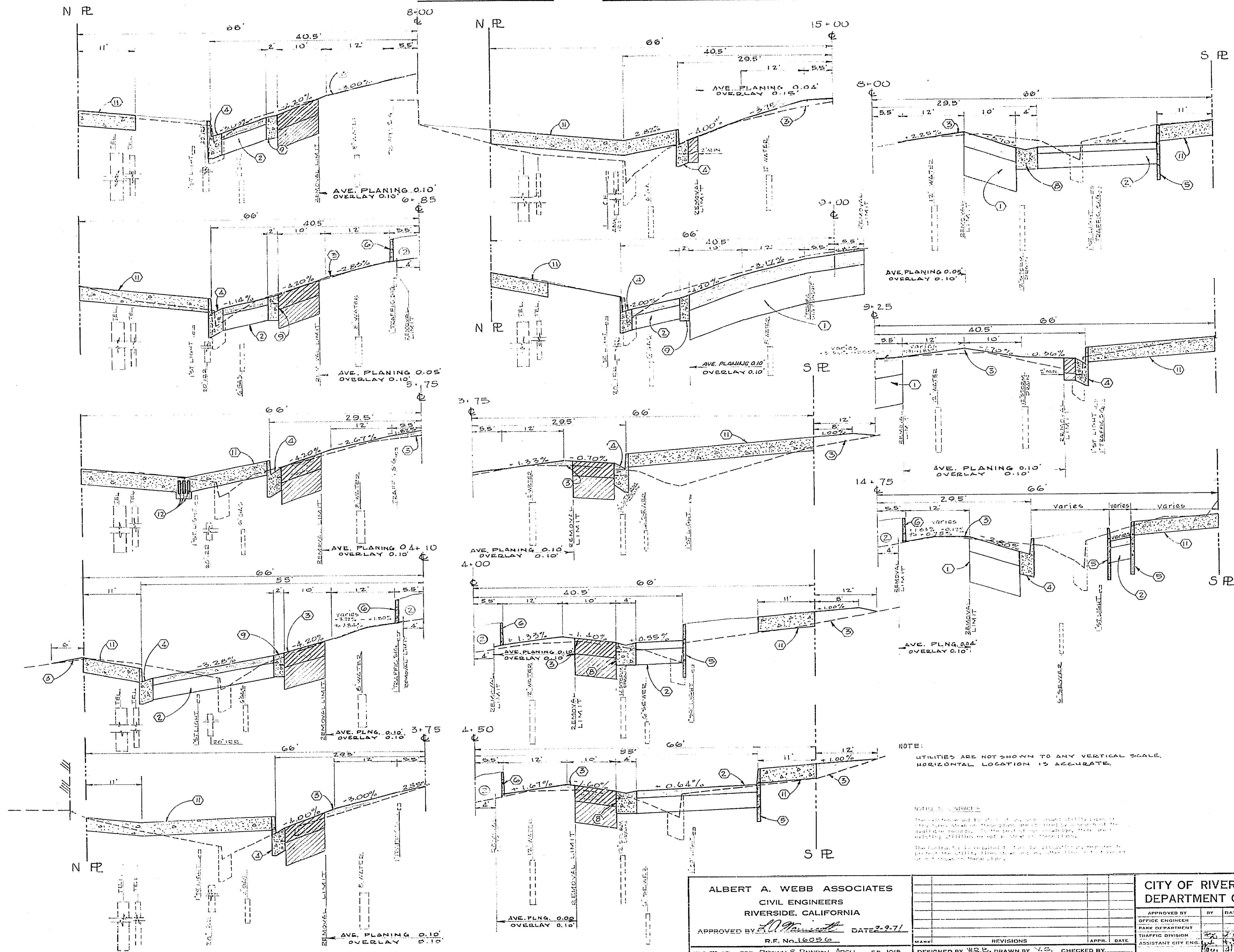
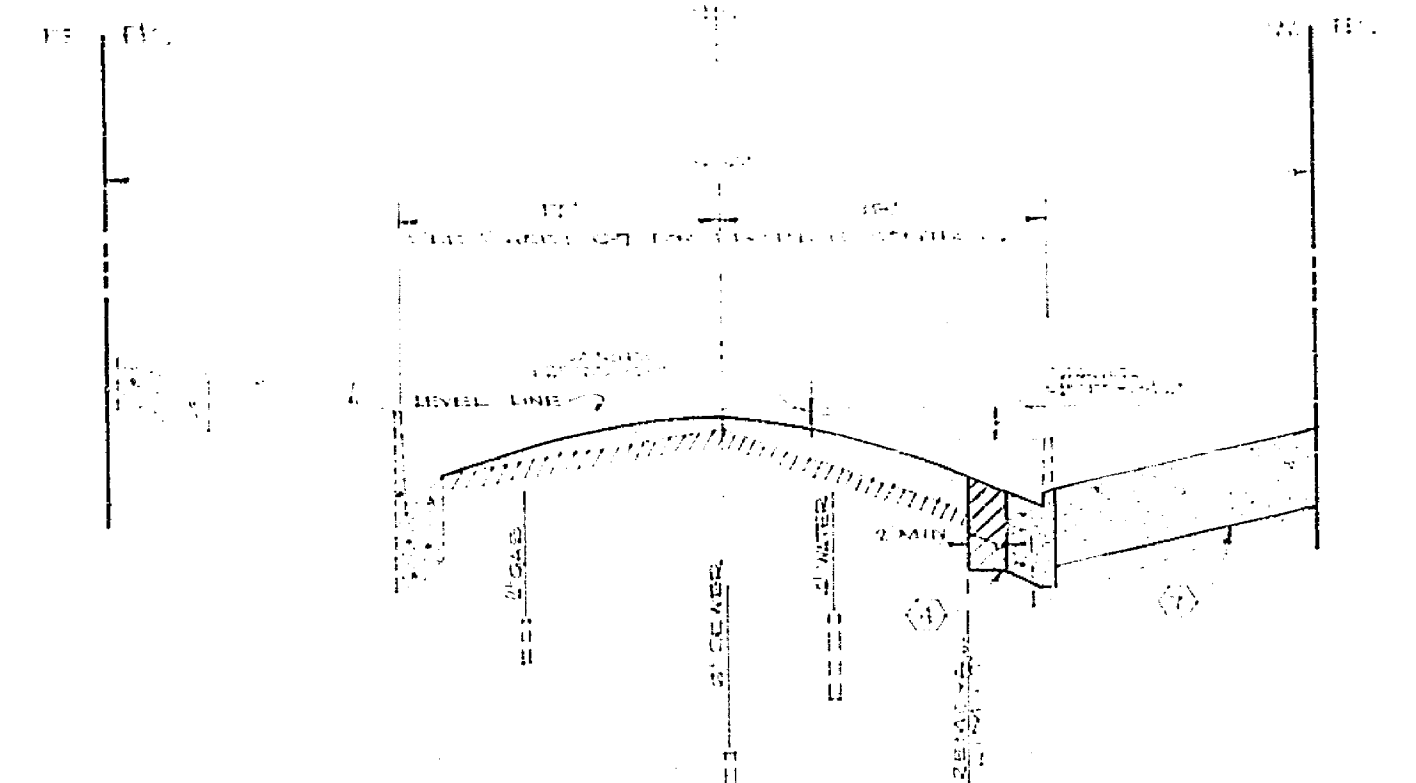


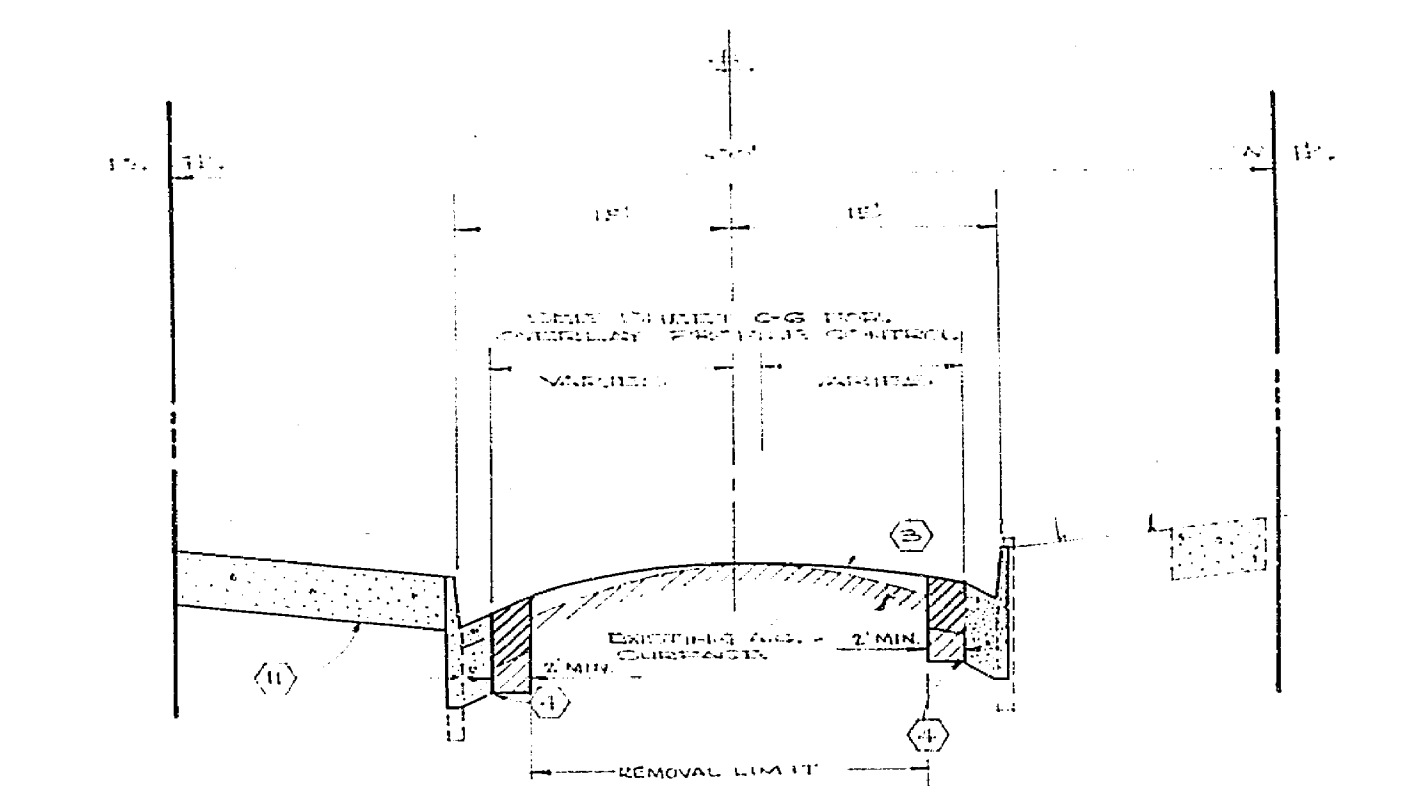
MAGNOLIA HALF-SECTIONS



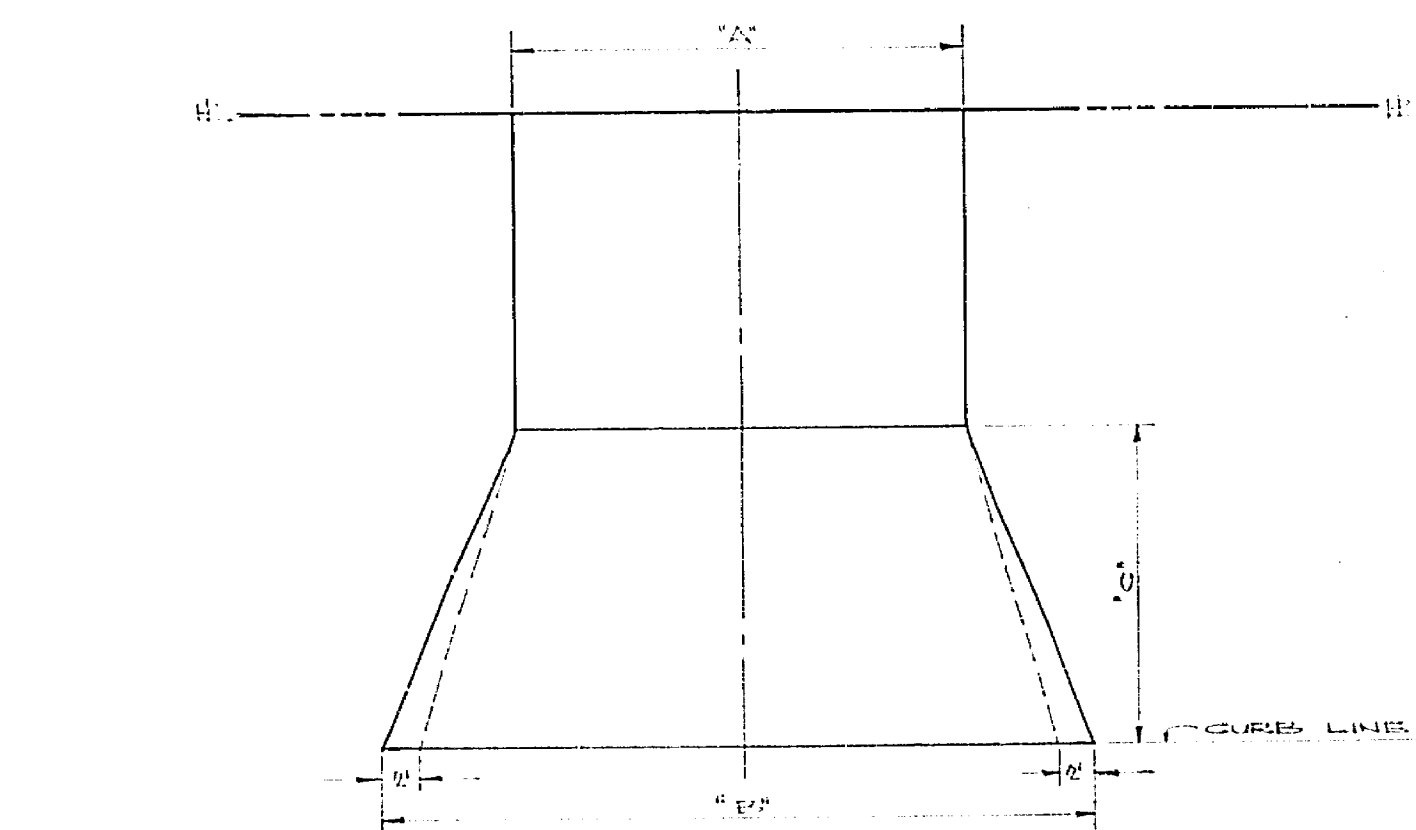
TYPICAL STREET SECTIONS



Roosevelt Street (S.)
STA. 0+21.50 (S) TO 1+15.00 (S)

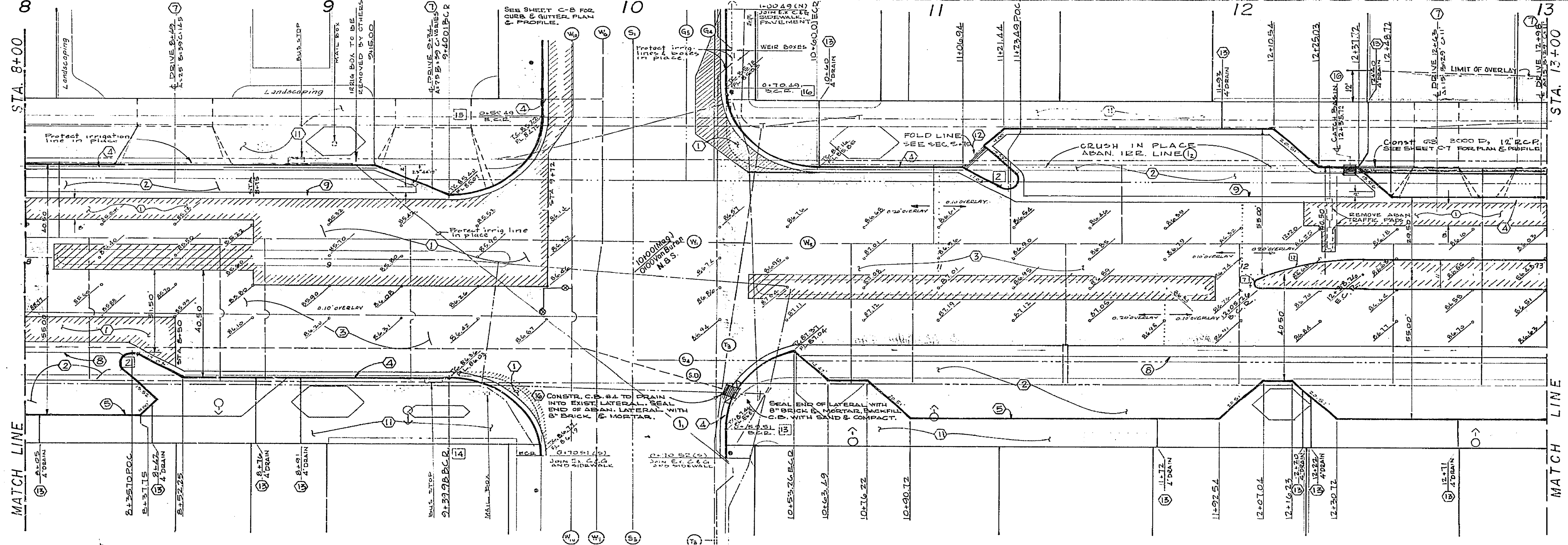
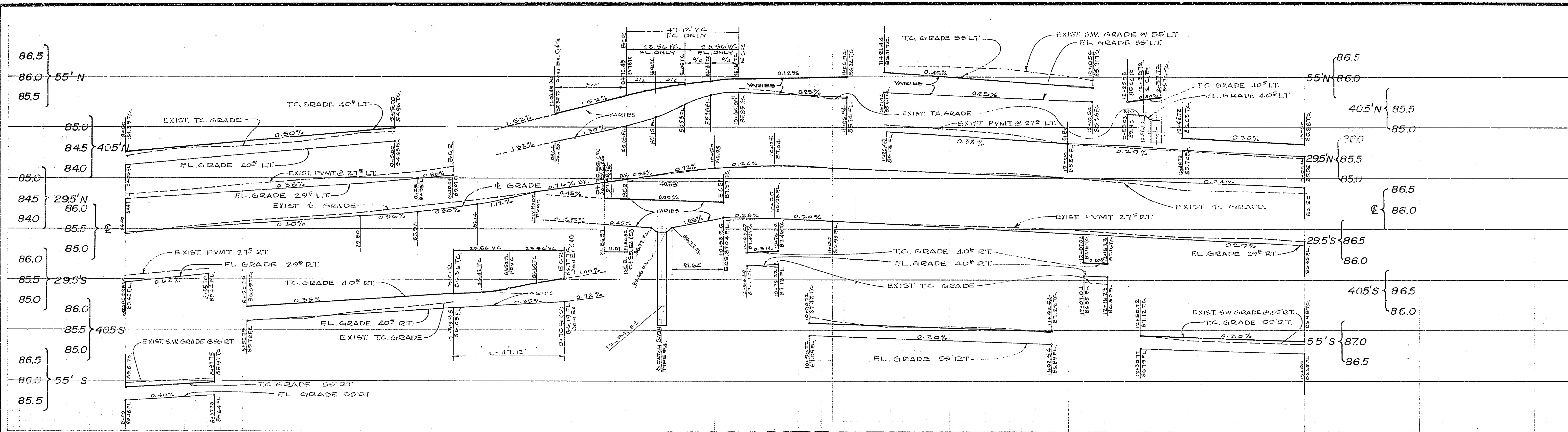


FARNHAM PLACE
STA. 0+37.50 TO 1+50.00



TYPICAL DRIVEWAY
PLAN VIEW
IN REALITY

ALBERT A. WEBB ASSOCIATES CIVIL ENGINEERS RIVERSIDE, CALIFORNIA APPROVED BY: <i>[Signature]</i> DATE: 2-27-71 R.F. No. 16236 W.O. 70-10 FOR BROWN E. RAWDON ARCH. P.B. 1018	CITY OF RIVERSIDE, CALIFORNIA DEPARTMENT OF PUBLIC WORKS		BEAUTIFICATION OF MAGNOLIA AVENUE	PROJECT NO. C-2 R-1480
	APPROVED BY: _____ BY: _____ DATE: _____ TRAFFIC DIVISION ASSISTANT CITY ENG.	APPROVED BY: _____ BY: _____ DATE: _____ DIRECTOR OF PUBLIC WORKS	TYPICAL SECTIONS	
DESIGNED BY: W.S.B. DRAWN BY: J.S. CHECKED BY: _____		HORIZ. SCALE: 1" = 10' VERT. SCALE: 1" = 1'		



SUBSTRUCTURE LEGEND					
SYMBOL	LOCATION	SIZE	OWNER		
WATER	W ₁	12' N. of Magnolia	8"	CITY OF RIVERSIDE PUBLIC UTILITIES WATER ENGR. DIV.	
	W ₂	12' N. of Magnolia	12"		
	W ₃	17' S. of Magnolia	12"		
	W ₄	8' W. of Roosevelt (N)	4"		
	W ₅	9' W. of Van Buren (N)	8"		
	W ₇	14' W. of Van Buren (S)	8"		
	W ₈	7' W. of Farnham	4"		
	W ₉	9' W. of Castlemann	4"		
	W ₁₀	20' W. of Van Buren	36"		(PROPOSED)
	IRRIG.	I ₁	AS SHOWN (approx.)		20"
I ₂		AS SHOWN (aban.)	Unk.		
I ₃		59' N. of Magnolia	MCL		
TEL.	T ₁	Varies 55-58' N. of Mag.	MTD	PACIFIC TEL. CO.	
	T ₂	Van Buren - Magnolia Int.	DLJ		
	T ₃	Varies 35.5-39' N. of Mag.	6"		
	T ₄	Varies 51-35.5' N. of Mag.	3"		
GAS	G ₁	12' E. of Castlemann	3"	SO CAL. GAS CO.	
	G ₂	12' E. of Farnham	3"		
	G ₃	17.5' E. of Van Buren	4"		
	G ₄	26.5' E. of Van Buren	8"		
	G ₅	17.5' E. of Van Buren	4"		
	G ₆	11' E. of Roosevelt (S)	2"		
SEWER	S ₁	15.5' E. of Roosevelt (N)	3"	CITY OF RIVERSIDE PUBLIC SERVICES	
	S ₂	33' S. of Magnolia	6"		
	S ₃	of Roosevelt (S)	6"		
	S ₄	of Van Buren	8"		
	S ₅	33' S. of Magnolia	8"		
	S ₆	of Farnham	6"		
TRAFFIC SIGNALS	T.S.	Int. Roosevelt, Int. Van Buren	1"	CITY OF RIVERSIDE PUBLIC WORKS TRAFFIC DIV.	
	T.S.	5' N. of Magnolia	1"		
	S.L.1	43' N. of Magnolia	1"		
	S.L.2	43' S. of Magnolia	1"		
STREET LIGHTS	S.L.	43' S. of Magnolia	1"	CITY OF RIVERSIDE PUBLIC UTILITIES STREET LIG. DIV.	
	S.L.	29.5' S. of Magnolia	12"		

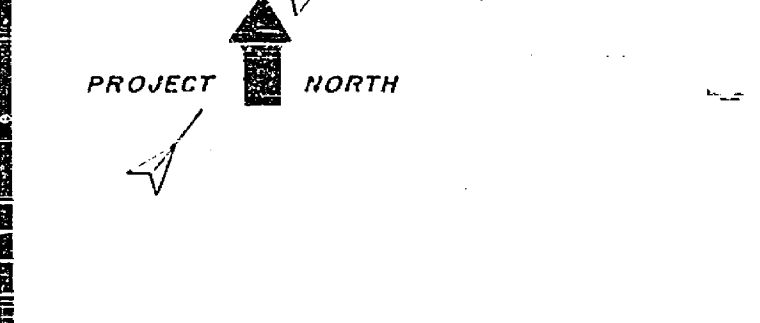
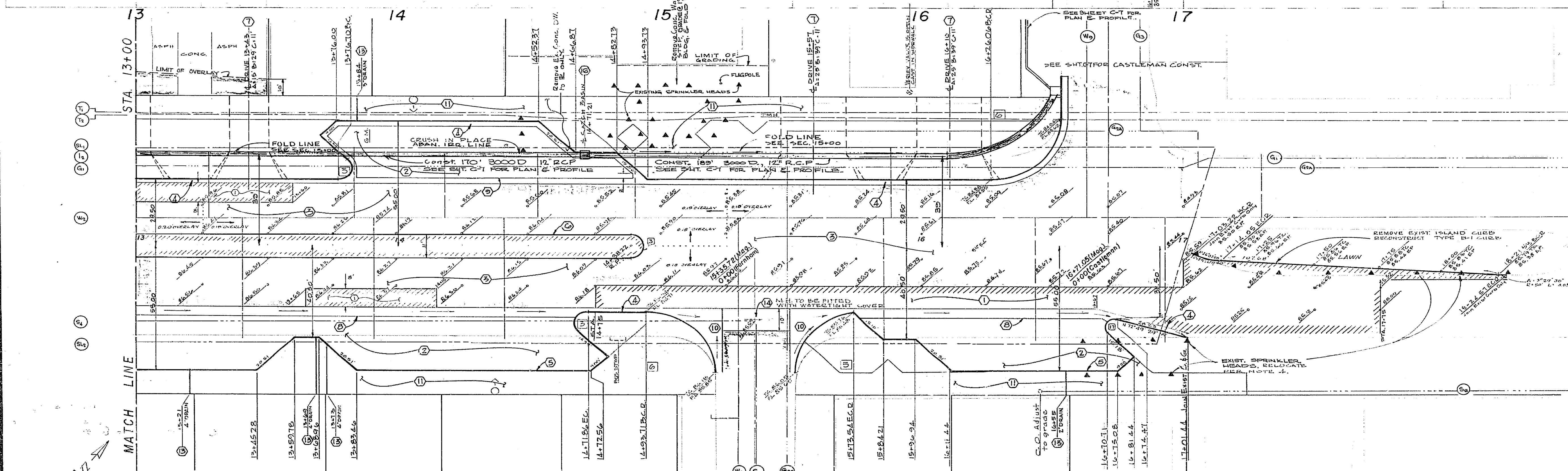
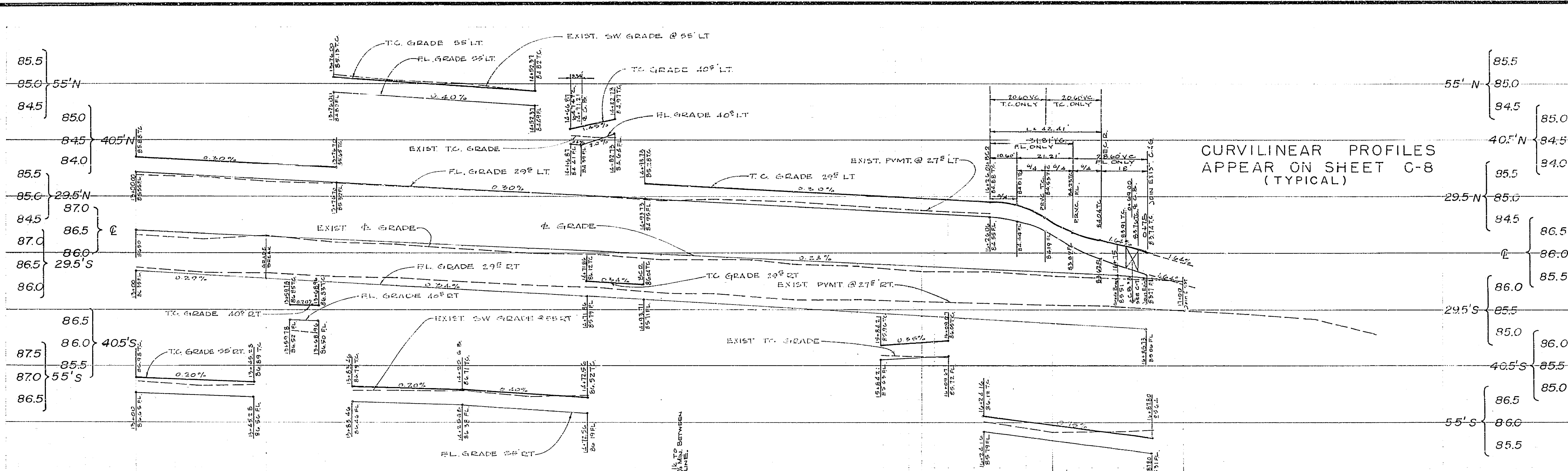
CURB CURVE DATA				
D	R	T	L	T
2	185' 00" 00"	3' 01"	10' 40"	27' 42"
12	27' 18' 14"	73.56'	34' 39"	17' 83"
13	77' 17' 39"	30.00'	40' 33"	23' 86"
14	29' 59' 75"	31.11'	22' 11"	25' 59"
15	90' 00' 00"	30.00'	47' 12"	50' 00"
16	30' 00' 45"	30.00'	47' 3"	50' 01"
17	152' 44' 46"	750'	4' 00"	679'

ALBERT A. WEBB ASSOCIATES
CIVIL ENGINEERS
RIVERSIDE, CALIFORNIA
APPROVED BY: *[Signature]* DATE: 2-9-71
R.E. No. 16 C 36
W.O. 70-19 FOR: BROWN & RANDON ARCH. FEB. 1916

CITY OF RIVERSIDE, CALIFORNIA
PUBLIC WORKS DEPARTMENT
APPROVED BY: *[Signature]* DATE: 2-9-71
TRAFFIC DIVISION
CHIEF PUBLIC WORKS ENGINEER

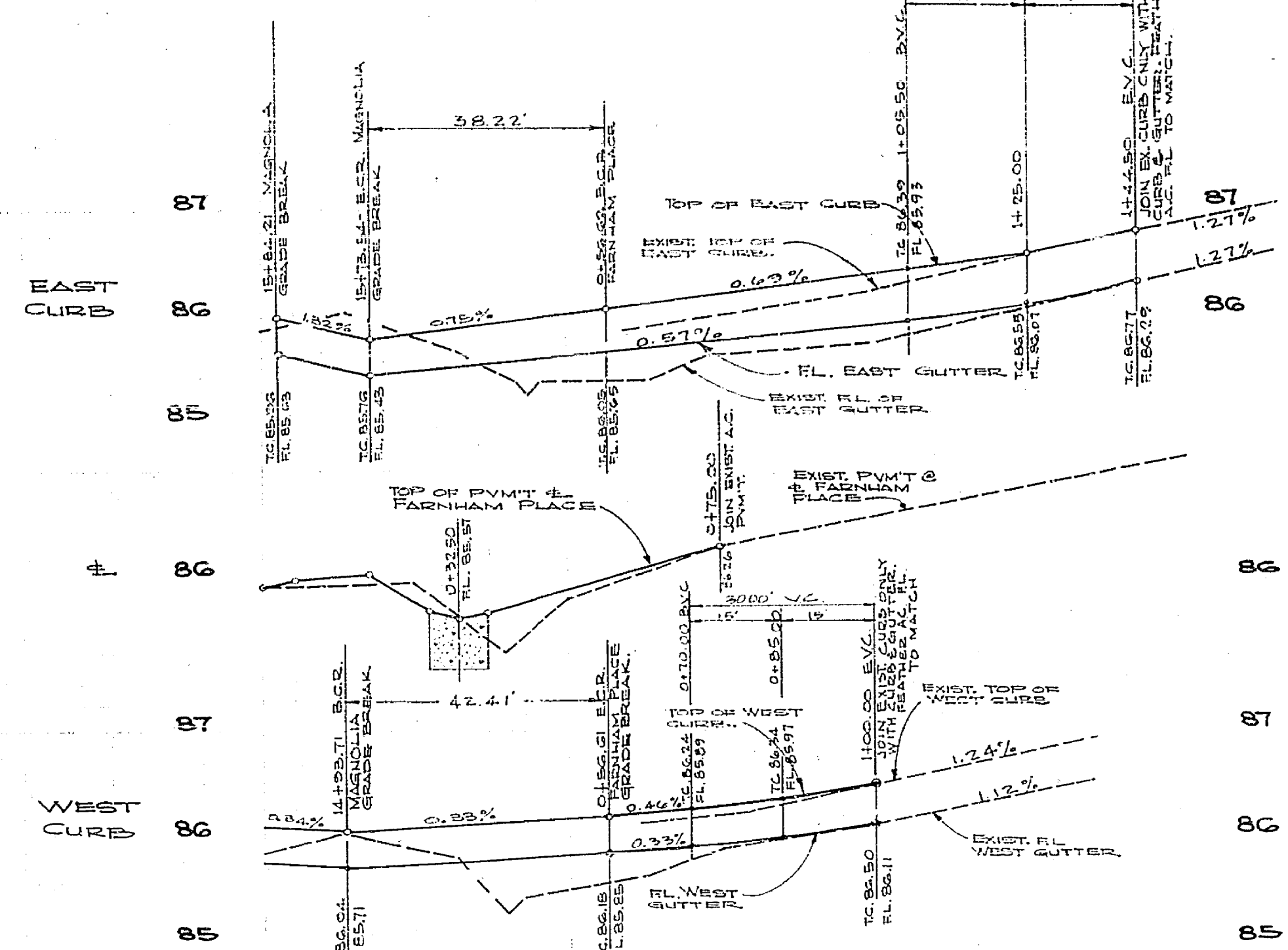
BEAUTIFICATION OF
MAGNOLIA AVENUE
STA. 8+00 TO STA. 13+00
SCALE: HORIZ: 1"=20' ; VERT: 1"=1'

ACCOUNT No.
DRAWING NUMBER
C-4
R-1480
W.O. 70-19-A

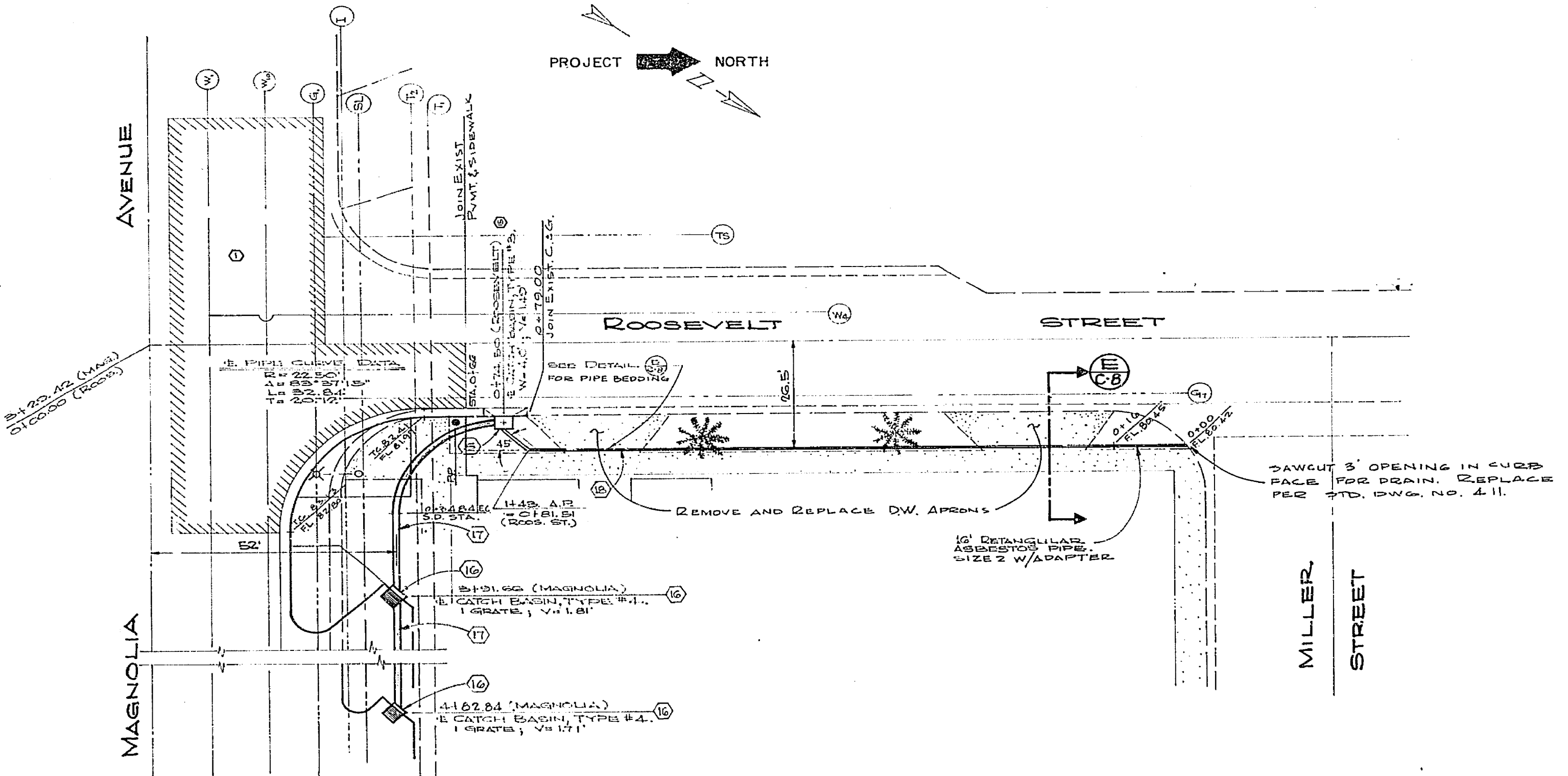
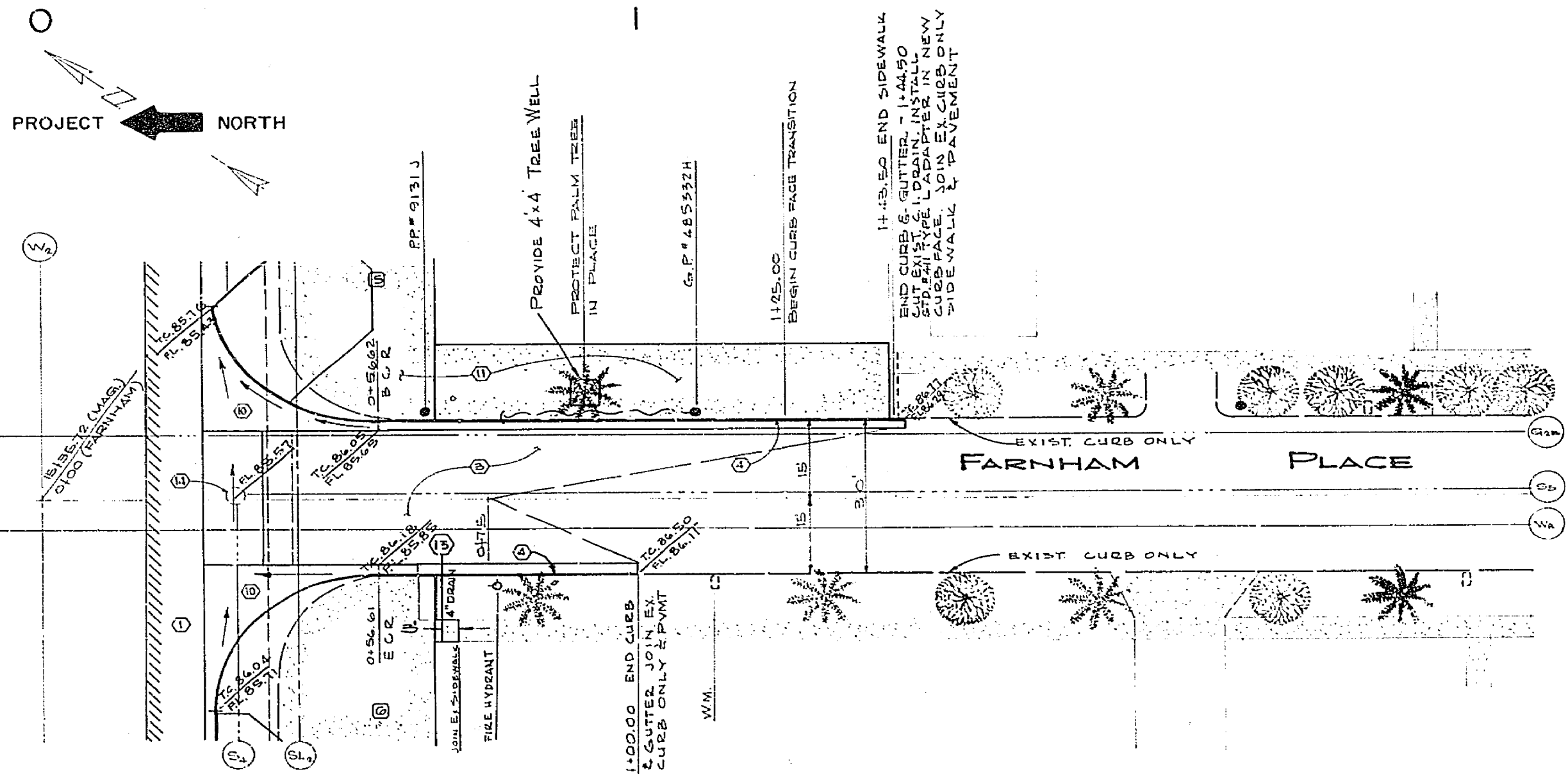
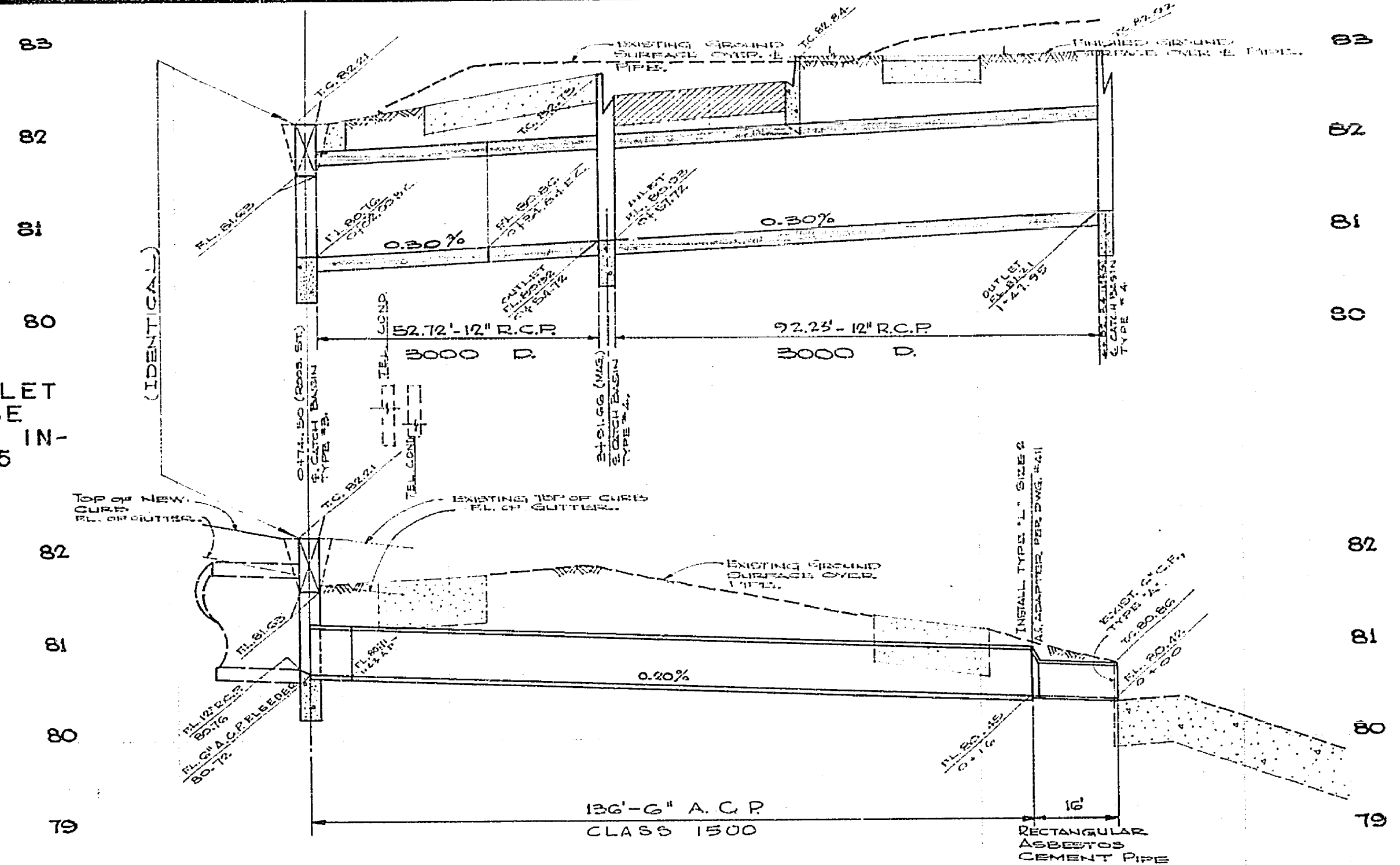


CURB CURVE DATA				
Station	Δ	R	L	T
1	165° 00' 00"	3.61	10.40'	27.42'
2	135° 00' 00"	5.00'	11.28'	18.02'
3	183° 00' 00"	9.50'	17.28'	35.00'
4	87° 00' 10"	27.00'	36.22'	83.70'
5	90° 00' 00"	27.00'	42.31'	27.50'
17	152° 09' 23"	3.75	9.36'	18.13'

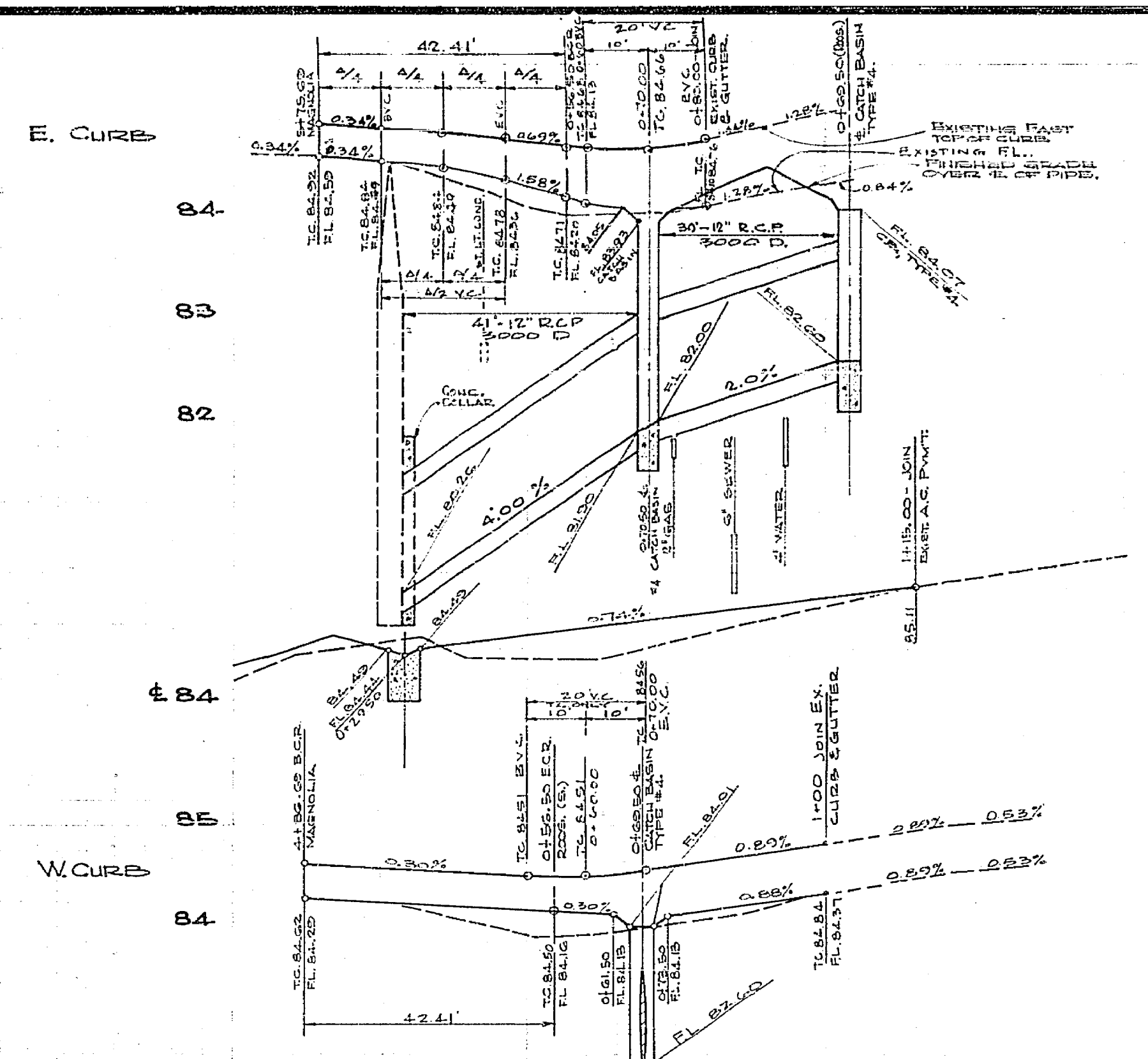
ALBERT A. WEBB ASSOCIATES CIVIL ENGINEERS RIVERSIDE, CALIFORNIA APPROVED BY: <i>[Signature]</i> DATE 2-9-71 R.E. No. 6286		CITY OF RIVERSIDE, CALIFORNIA PUBLIC WORKS DEPARTMENT APPROVED BY: _____ DATE _____ TRAFFIC DIVISION CHIEF PUBLIC WORKS ENGINEER		BEAUTIFICATION OF MAGNOLIA AVENUE STA. 13+00 TO STA. 17+75 SCALE: HORIZ. 1"=50'; VERT. 1"=1'		ACCOUNT No. DRAWING NUMBER C-5 R-1480 TO-10-A	
W.D. 70-19 FOR: BROWN & RAWSON ARCH. P.D. 1018 DESIGNED BY: W.R.B. DRAWN BY: Y.G. CHECKED BY:		REVISIONS: _____ APPR. DATE: _____		APPROVED BY: _____ DATE: _____ DIRECTOR OF PUBLIC WORKS		DATE: _____	



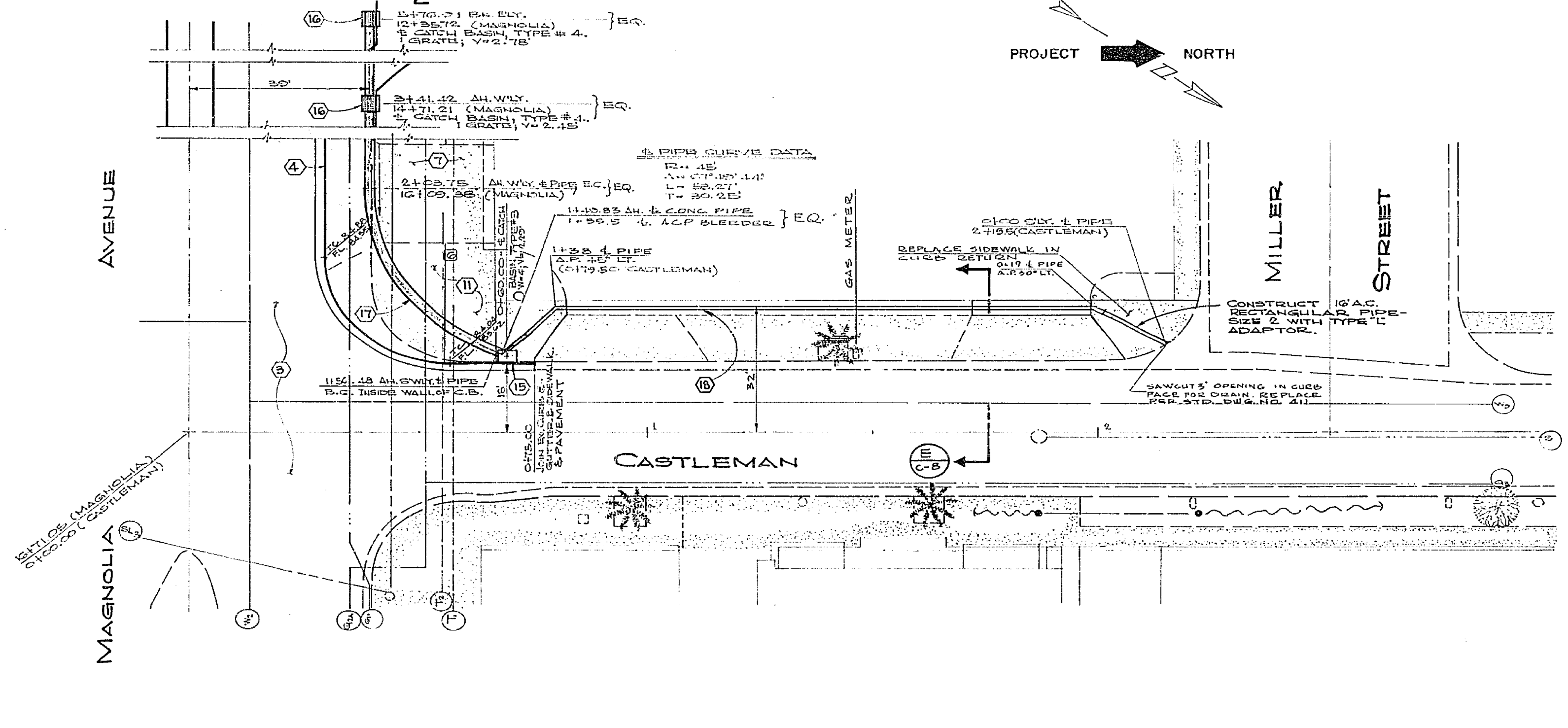
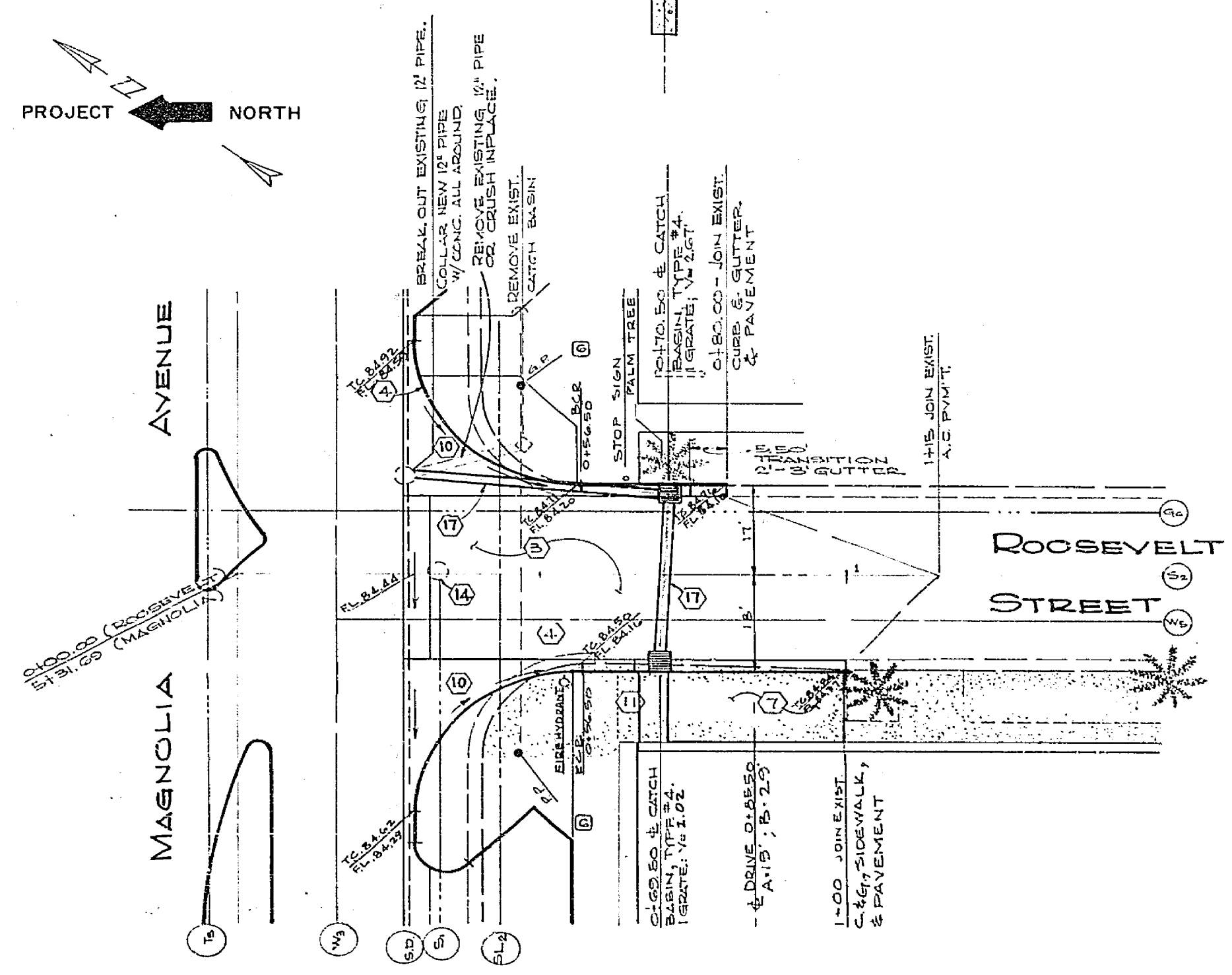
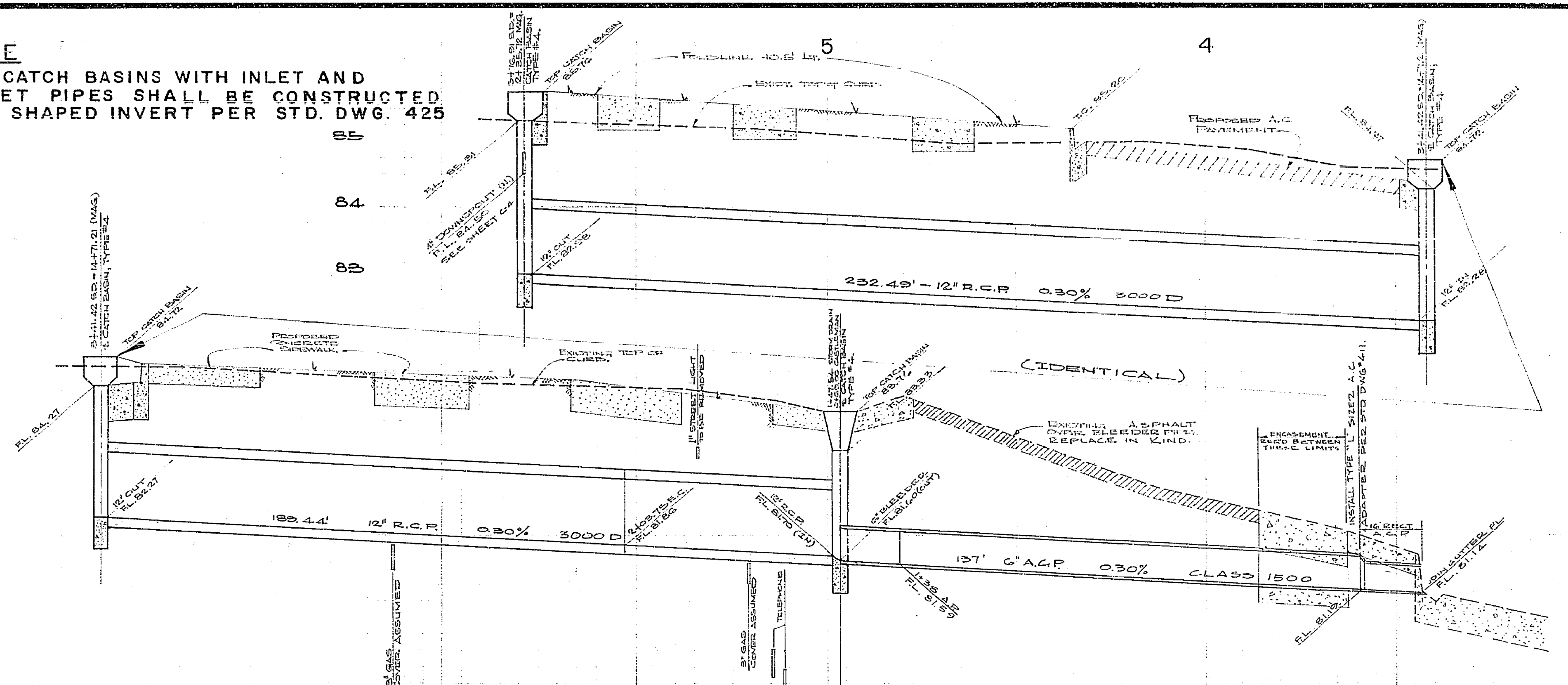
NOTE
 ALL CATCH BASINS WITH INLET AND OUTLET PIPES SHALL BE CONSTRUCTED WITH SHAPED INVERT PER STD. DWG. NO. 425



ALBERT A. WEBB ASSOCIATES CIVIL ENGINEERS RIVERSIDE, CALIFORNIA APPROVED BY <i>A.A. Webb</i> DATE 2-27-71 R.E. No. 16056	MARK REVISIONS _____ _____ _____	CITY OF RIVERSIDE, CALIFORNIA PUBLIC WORKS DEPARTMENT		BEAUTIFICATION OF MAGNOLIA AVENUE	ACCOUNT No. DRAWING NUMBER C-6 R-1480
		APPROVED BY <i>[Signature]</i> DATE 2-27-71 PRINCIPAL ENGINEER PARK DEPARTMENT TRAFFIC DIVISION CHIEF PUBLIC WORKS ENGINEER	APPROVED BY <i>[Signature]</i> DATE 2-27-71 DIRECTOR OF PUBLIC WORKS	INTERSECTION CONSTRUCTION FARNHAM PL. & ROOSEVELT ST. (N.)	SCALE: HORIZ. 1"=50' VERT. 1"=1' 10-15-D



NOTE
 ALL CATCH BASINS WITH INLET AND
 OUTLET PIPES SHALL BE CONSTRUCTED
 WITH SHAPED INVERT PER STD. DWG. 425



ALBERT A. WEBB ASSOCIATES CIVIL ENGINEERS RIVERSIDE, CALIFORNIA APPROVED BY: <i>[Signature]</i> DATE: 2-9-71 R.E. No. 16051a	CITY OF RIVERSIDE, CALIFORNIA PUBLIC WORKS DEPARTMENT APPROVED BY: <i>[Signature]</i> DATE: 2-9-71 TRAFFIC DIVISION CHIEF PUB. WKS. ENGR. <i>[Signature]</i> DATE: 2-9-71	BEAUTIFICATION OF MAGNOLIA AVENUE INTERSECTION CONSTRUCTION ROOSEVELT ST. (S.) & CASTLEMAN ST. SCALES: HORIZ. 1"=40'; VERT. 1"=1'	ACCOUNT No. DRAWING NUMBER C-7 R-1480
			DESIGNED BY: W.R.D. DRAWN BY: Y.S. CHECKED BY:

