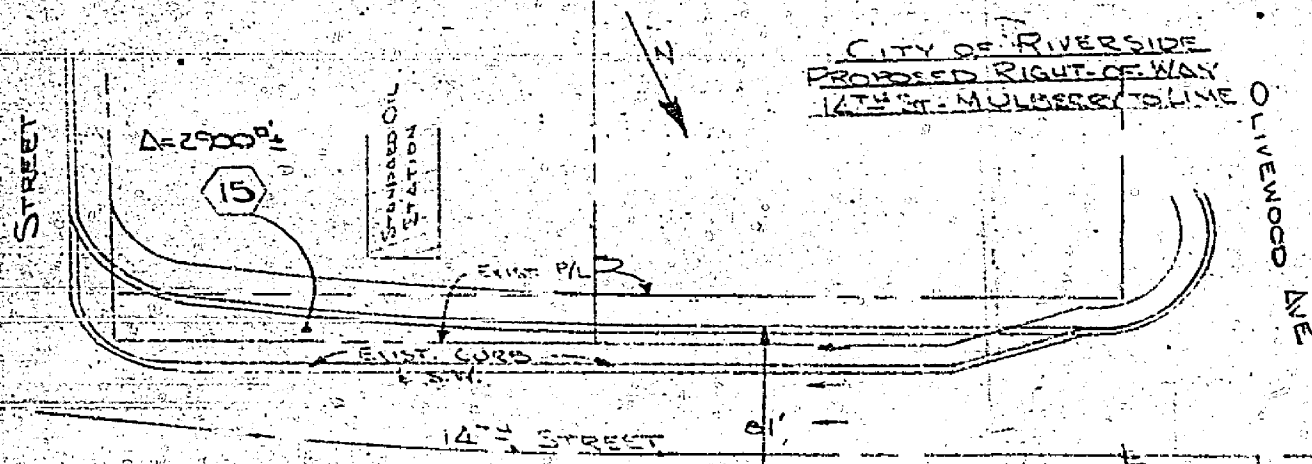


For R/W see insert below



**DE LEUW, CATHAR & COMPANY**  
 CONSULTING ENGINEERS  
 SAN FRANCISCO, CALIFORNIA  
 10/25/70

CITY OF RIVERSIDE  
APPROXIMATE RIGHT-OF-WAY  
14th ST. MULBERRY TO LIME

14th Street Underpass  
 City of Riverside, Calif.  
 Approximate Right-of-Way Requirements  
 Supersedes Drawings Accompanying our Letters of  
 Aug. 24, 5 Oct 28, 1968

**DE LEUW, CATHAR & COMPANY**  
 CONSULTING ENGINEERS  
 SAN FRANCISCO, CALIFORNIA  
 10/25/70

