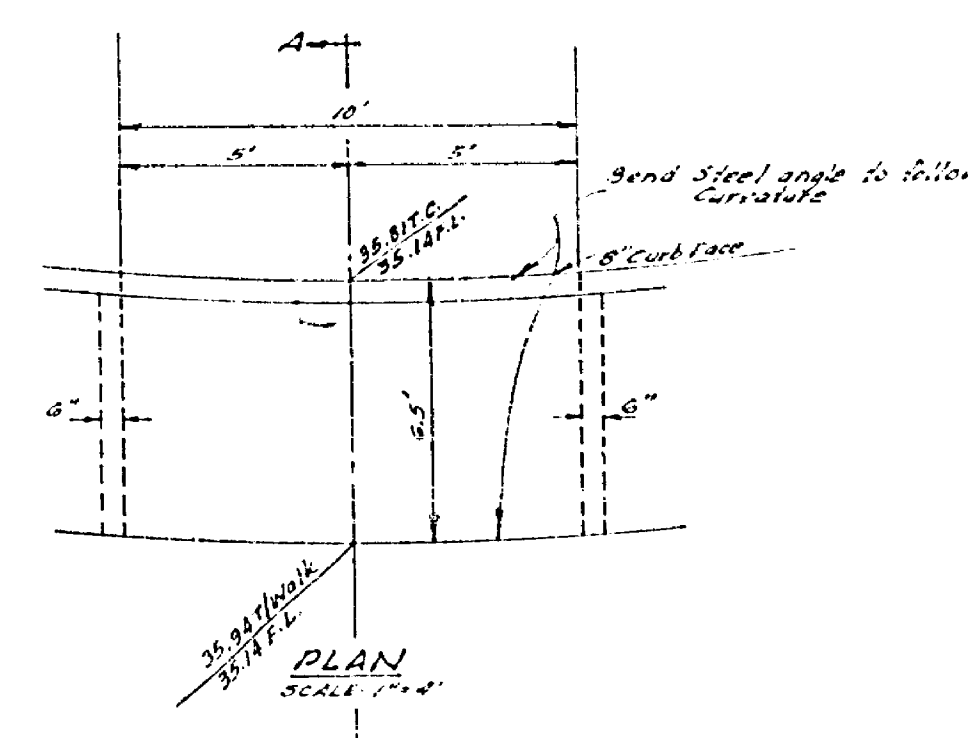
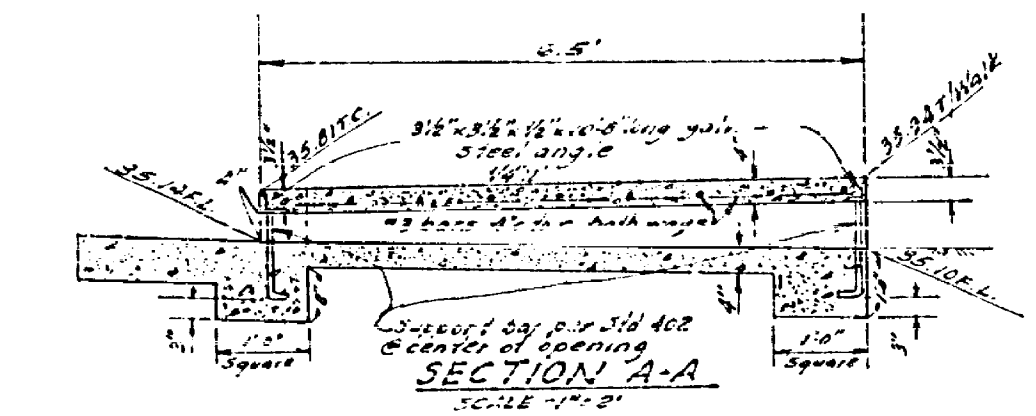


DETAIL "B"
STD. 410 MODIFIED



DETAIL "A"
STD. 410 MODIFIED



SECTION A-A

- SPECIAL NOTES**
1. The gutter shall be installed with a minimum slope of 1/4" per 10'.
 2. The gutter shall be installed with a minimum slope of 1/4" per 10'.
 3. The gutter shall be installed with a minimum slope of 1/4" per 10'.
 4. The gutter shall be installed with a minimum slope of 1/4" per 10'.
 5. The gutter shall be installed with a minimum slope of 1/4" per 10'.

- GENERAL NOTES**
- (1) It shall be the responsibility of the contractor to clear the right of way in accordance with the provisions of law as it affects such utility, including irrigation lines, and other utilities, and to set out in the City Standard Drawings.
 - (2) The quantity estimate shows amount for information only and the City assumes no responsibility for its accuracy.
 - (3) All flagged obstructions shall be stated in the field by the engineer.
 - (4) Traffic control signs must be erected prior to opening of street to traffic.
 - (5) The contractor shall arrange for a soil test to be made by soils engineer after the street has been prepared to rough grade. Depth of base material and aggregate shall be determined by City of Riverside Design Standards and Test Procedures.

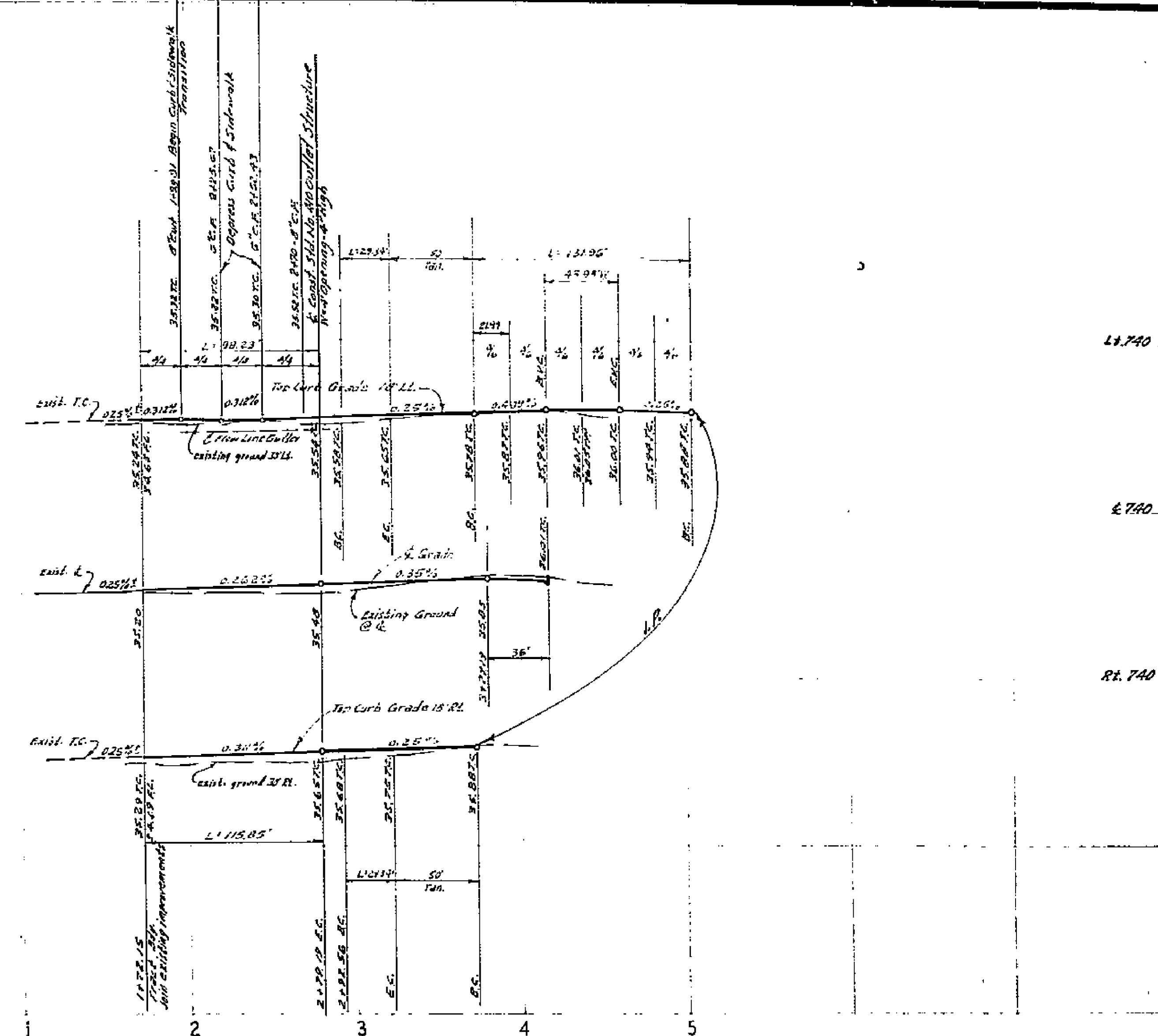
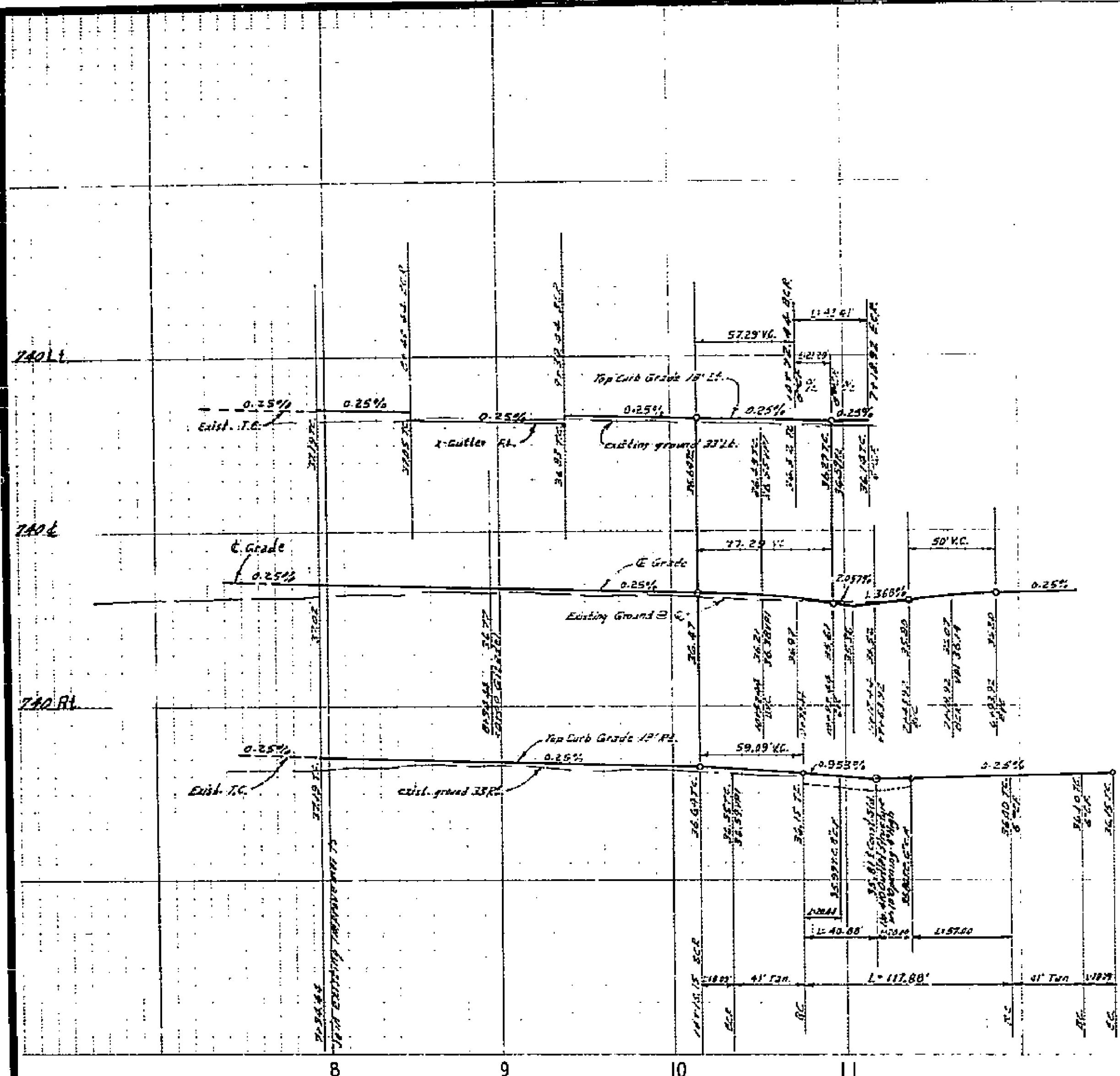
STREET SIGN SCHEDULE

A	WARREN ST	4700
A	CITADEL CT	7900
B	WARREN ST	4700
B	ORLANDO DR	7900
C	WELLS ST	7800
C	WARREN ST	5200
D	CHALLENGE ST	5000
D	ORLANDO DR	7900

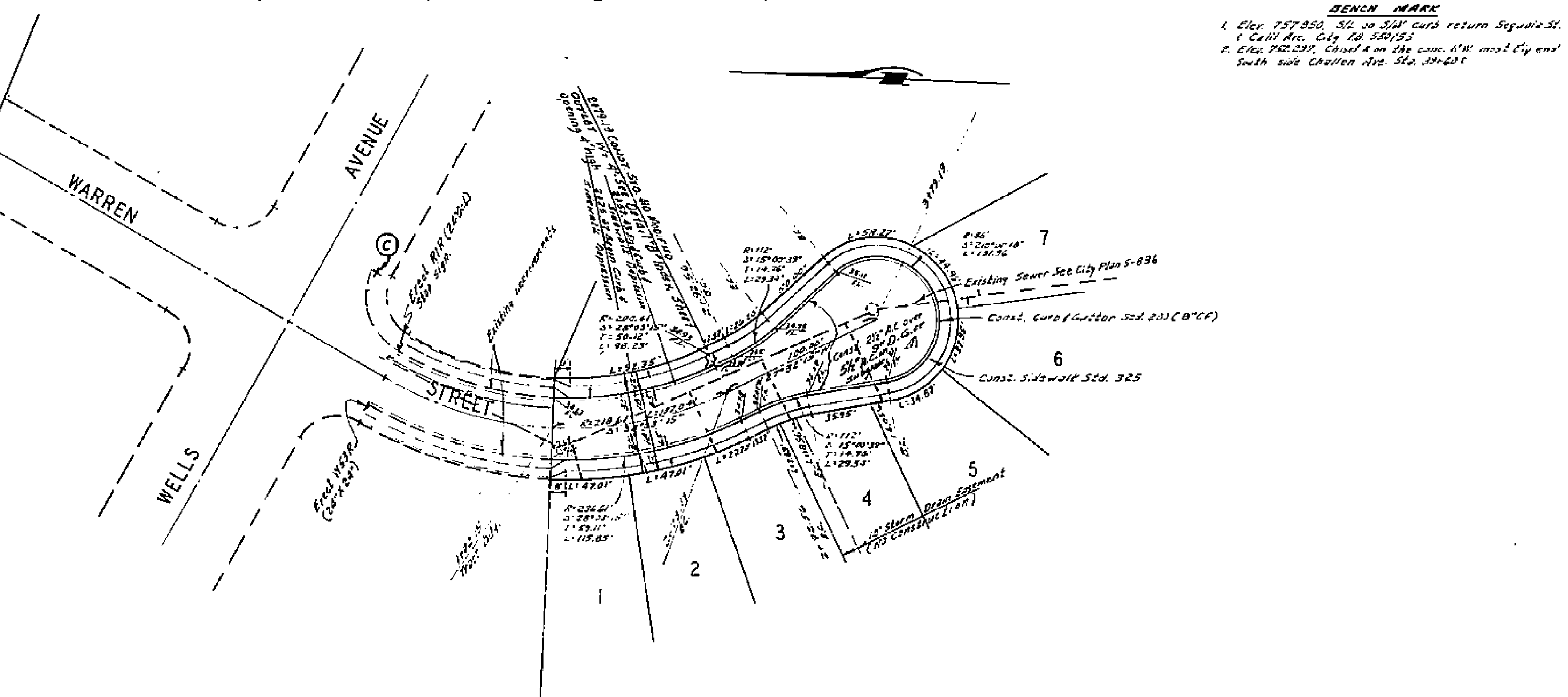
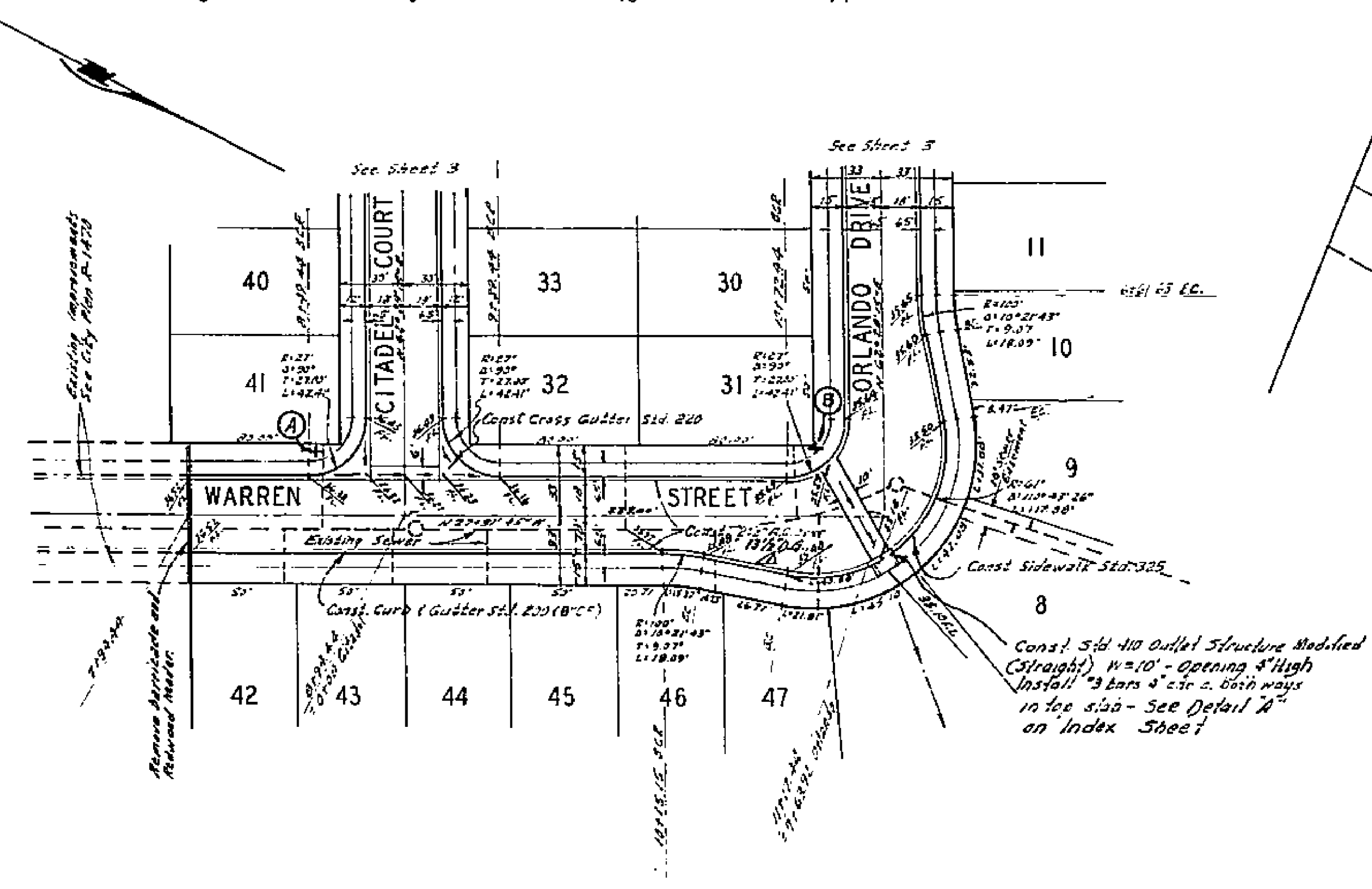
QUANTITY ESTIMATE

2x6 Gutter Standard 200 (C.C.F.)	1240	LF
Curb Gutter Standard 200 (C.C.F.)	1360	LF
Sidewalk Standard 300	18702	SF
2x6 Gutter Standard 300	2073	SF
2x4 Radway Standard	32	LF
Harrisburg Standard 100	60	LF
Driveway Approaches Standard 300	47	LF

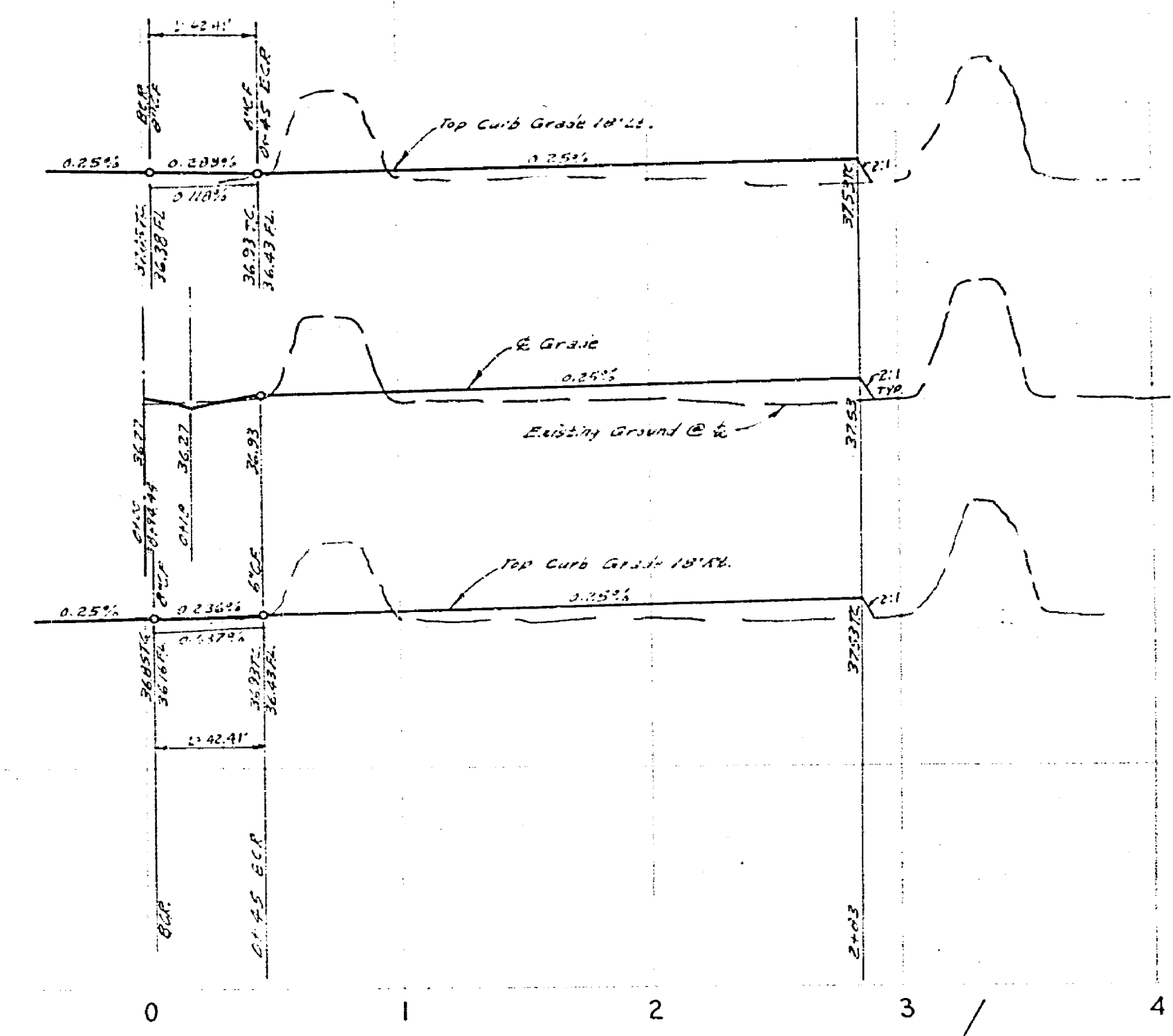
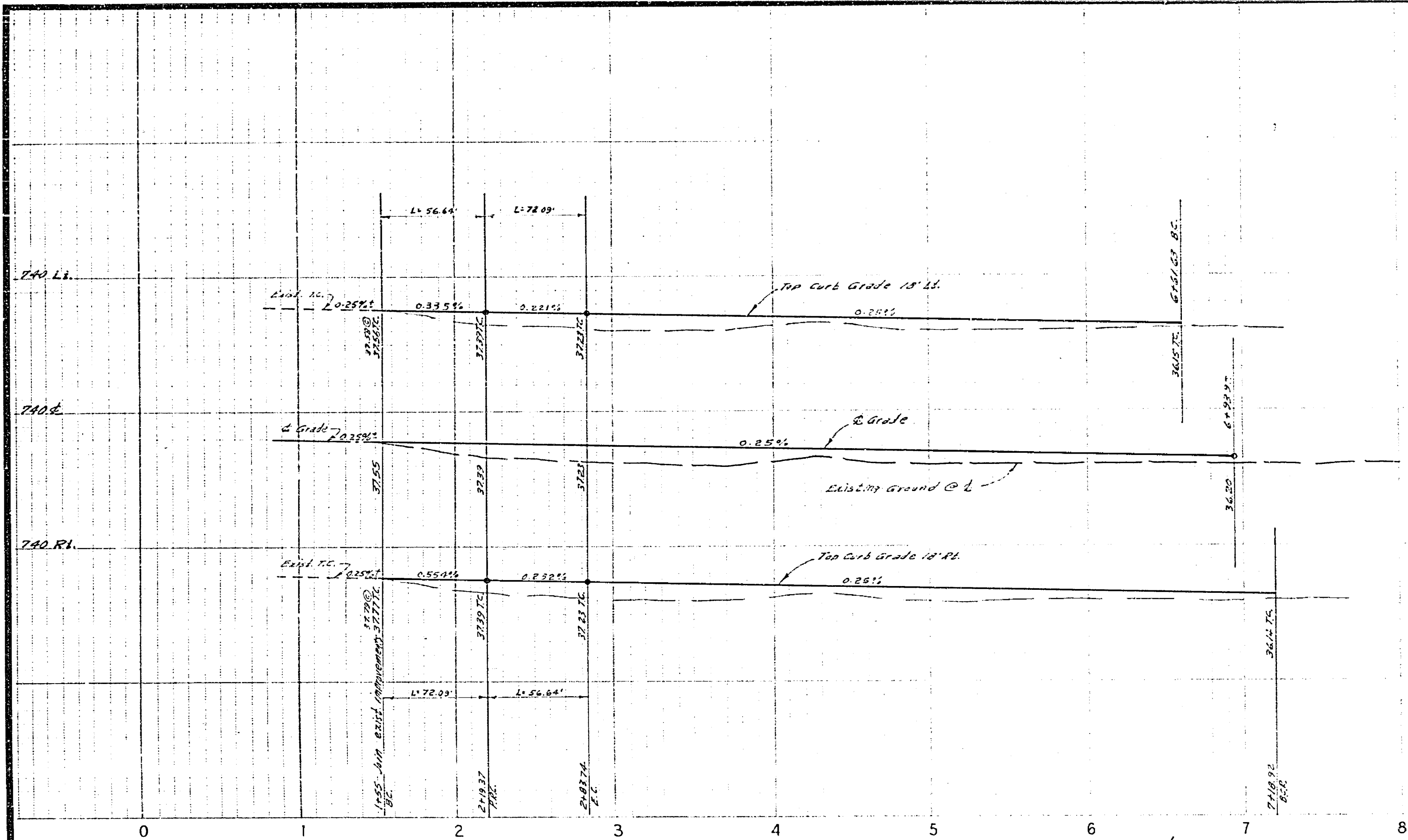
ALBERT A. WEBB ASSOCIATES CIVIL ENGINEERS RIVERSIDE, CALIFORNIA APPROVED BY: <i>[Signature]</i> DATE: 12/20/70 R.E. No. 9876 W.G. 74-239 FOR WOODHAVEN DEV. P.D. 1972	CITY OF RIVERSIDE, CALIFORNIA DEPARTMENT OF PUBLIC WORKS APPROVED BY: <i>[Signature]</i> DATE: 1/5/71 OFFICE ENGINEER PARK DEPARTMENT TRAFFIC DIVISION ASSISTANT CITY ENGINEER DESIGNED BY: <i>[Signature]</i> DRAWN BY: <i>[Signature]</i> CHECKED BY: <i>[Signature]</i>	STREET PLAN AND PROFILE INDEX SHEET TRACT NO. 4148 SCALE: AS SHOWN	PROJECT NO. R-1492 SHEET 1 OF 3 FILE NO. 70-239-A
		W.G. 74-239 FOR WOODHAVEN DEV. P.D. 1972	



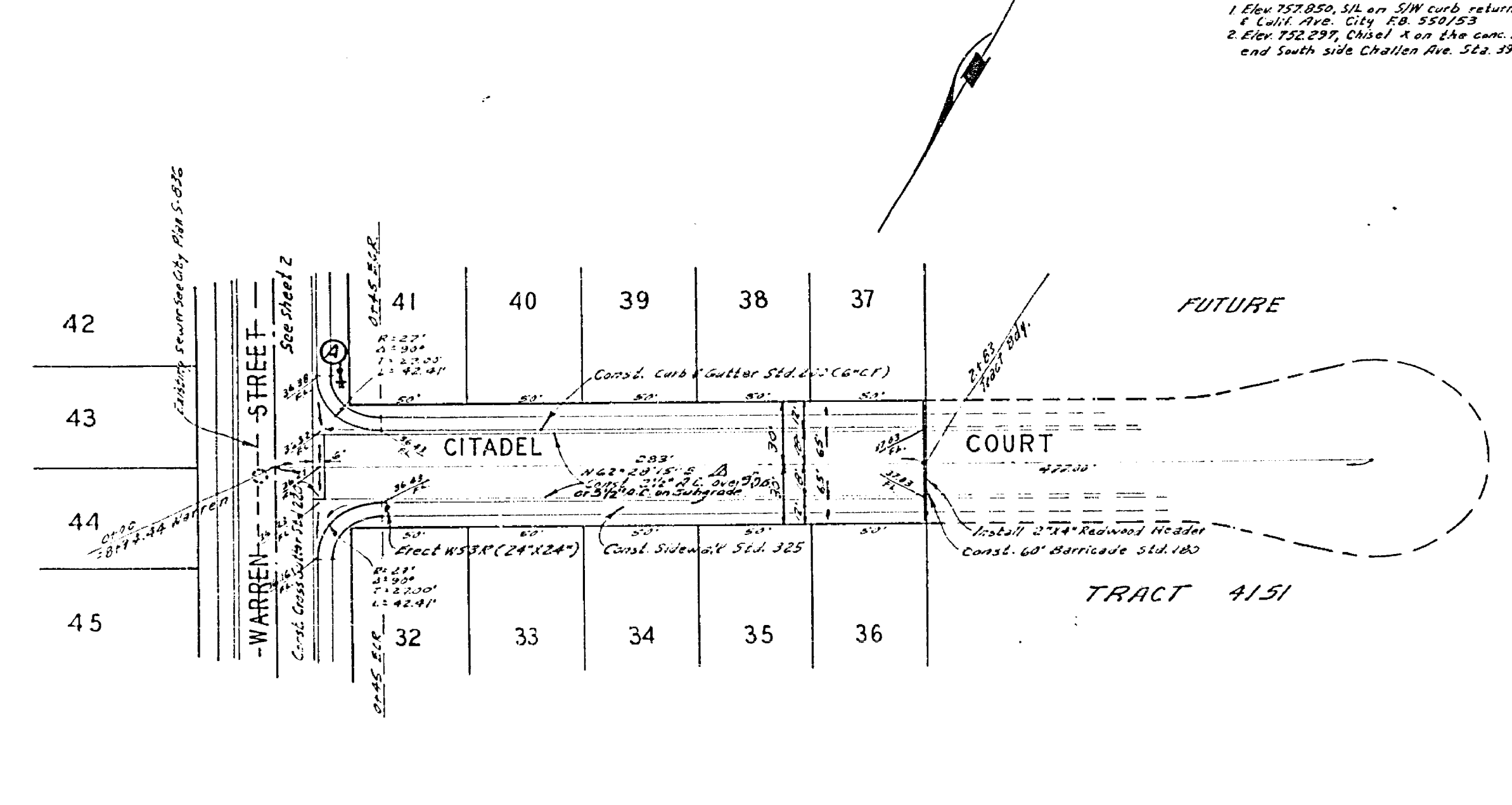
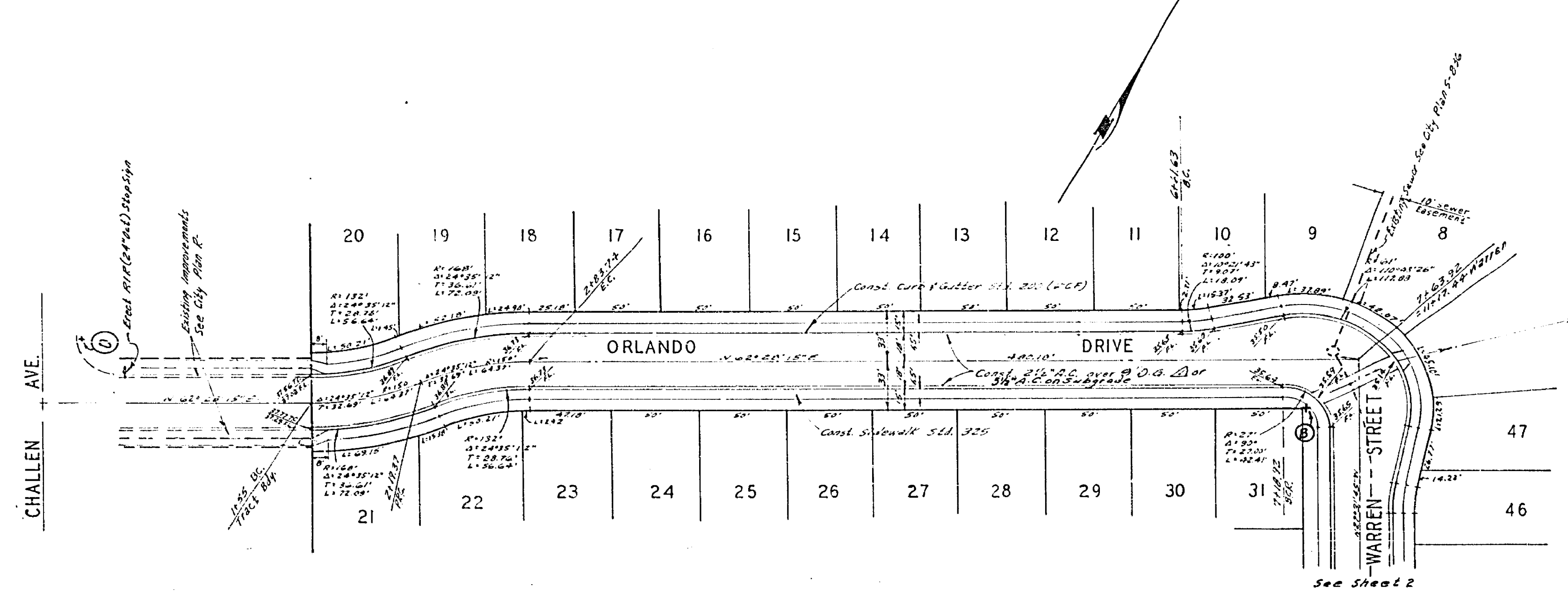
BENCH MARK
 1. Elev. 757.850, Sta. on 3/4" curb return Sequoia St.
 2. Elev. 752.237, Chisel A on the corner NW. most City and
 South side Charleston Ave. Sta. 34+23.6



ALBERT A. WEBB ASSOCIATES CIVIL ENGINEERS RIVERSIDE, CALIFORNIA		CITY OF RIVERSIDE, CALIFORNIA PUBLIC WORKS DEPARTMENT		STREET PLAN AND PROFILE WARREN STREET		ACCOUNT NO. DRAWING NUMBER R-1492
APPROVED BY: <i>[Signature]</i> DATE: 12/21/20 R.E. No. 9876		APPROVED BY: <i>[Signature]</i> DATE: <i>[Date]</i> DIRECTOR OF PUBLIC WORKS		TRACT 4148		SHEET 2 OF 3 70-239-A
W.D. 239 FOR: wood haven Dev. P.M. 12/17		DESIGNED BY: <i>[Signature]</i> DRAWN BY: <i>[Signature]</i> CHECKED BY: <i>[Signature]</i>		SCALE: 1" = 50' Horiz. 1" = 5' Vert.		



BENCHMARK
 1 Elev 752.850, Sta on SW curb return Sequoia St.
 2 Elev 752.297, Chisel A on the conc. HW must Elev and South side Chillon Ave Sta 32+40.1



ALBERT A. WEBB ASSOCIATES CIVIL ENGINEERS RIVERSIDE, CALIFORNIA APPROVED BY <i>[Signature]</i> DATE 12/21/70 R.E. No. 9876 W.D. 20-234 FOR: woodhaves Dev F.B. 10/70		CITY OF RIVERSIDE, CALIFORNIA PUBLIC WORKS DEPARTMENT APPROVED BY <i>[Signature]</i> BY DATE 1/11/71 PRINCIPAL ENGINEER TRAFFIC DIVISION CHESTER WALKER DATE 1/11/71		STREET PLAN AND PROFILE ORLANDO DRIVE CITADEL COURT TRACT 4148 SCALE: 1"=50' Horiz. 1"=5' Vert.		ACCOUNT NO. DRAWING NUMBER R-1492 SHEET 3 OF 3 70-239-A
--	--	---	--	--	--	---