

731
730
729

LT.

731
730
729

RT.

731
730
729

RT.

731
730
729

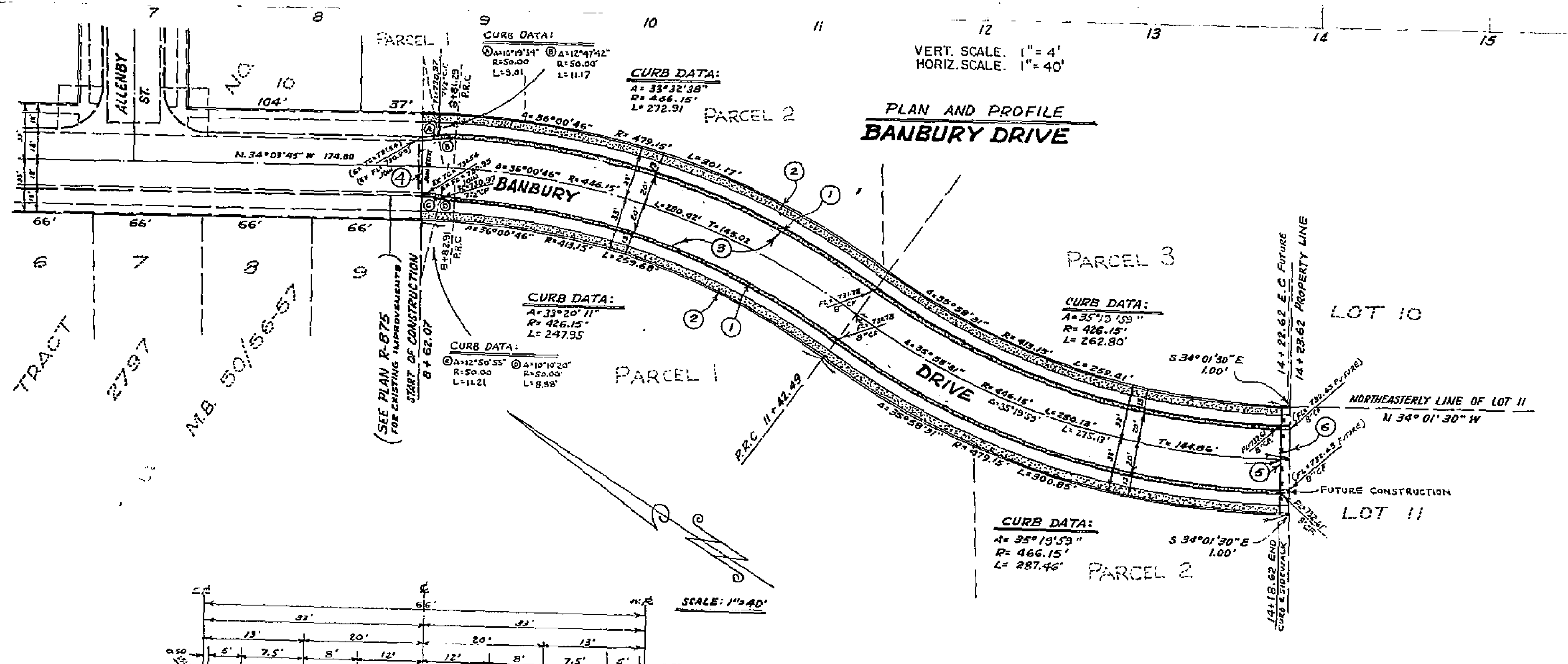
LT.

731
730
729

RT.

731
730
729

RT.

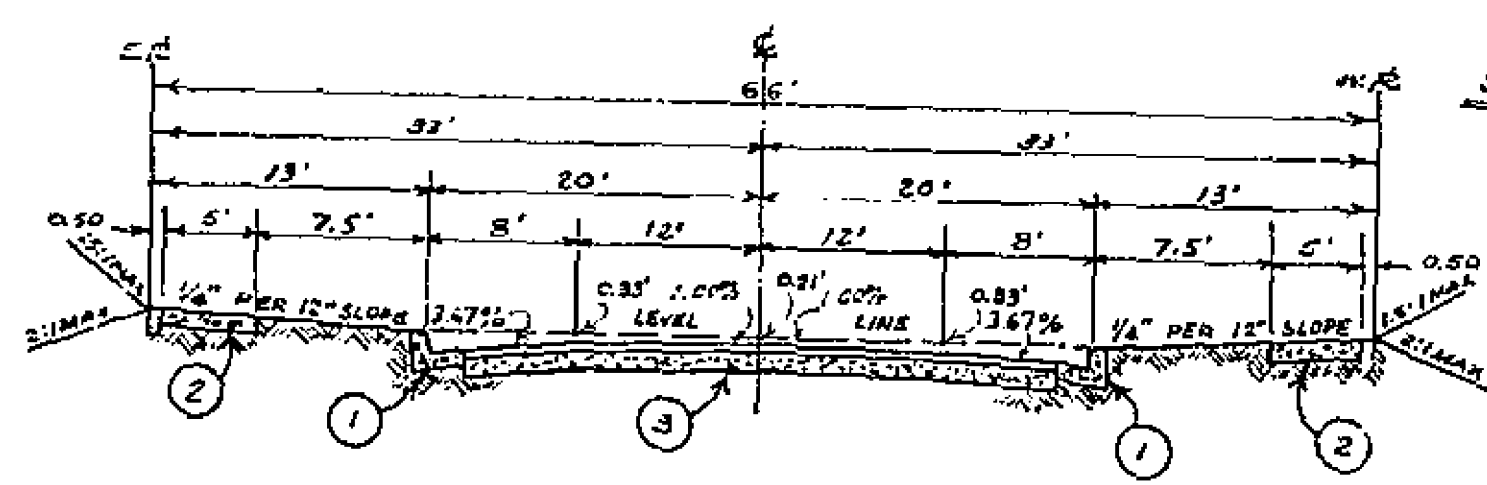


CONSTRUCTION NOTES:

- 1) CONST. CONC. CURB & GUTTER PER CITY OF RIVERSIDE STD. DWG. NO. 200 (8" C.F.)
- 2) CONST. 5' CONC. SIDEWALK PER CITY OF RIVERSIDE STD. DWG. NO. 350
- 3) CONST. 2 1/2" A.C. AND SEAL COAT OVER 4" D.G. BASE
- 4) REMOVE EXIST. BARRICADE AND REDWOOD HEADER
- 5) CONST. STD BARRICADE PER STD. DWG NO. 180, 66' LONG
- 6) CONST. STD. 2" X 4" REDWOOD HEADER

GENERAL NOTES:

1. CONSTRUCTION SHALL BE DONE IN ACCORDANCE WITH THE STANDARD SPECIFICATIONS FOR PUBLIC WORKS CONSTRUCTION, 1970 EDITION, AND THE CITY OF RIVERSIDE STANDARD DRAWINGS.
2. IT SHALL BE THE CONTRACTORS RESPONSIBILITY TO FAMILIARIZE HIMSELF WITH THE JOBSITE AND ANY UNDERGROUND FACILITIES SHOWN OR NOT SHOWN ON THESE PLANS. THE ENGINEER WILL NOT BE RESPONSIBLE FOR ANY DAMAGE TO UNDERGROUND FACILITIES.
3. ALL FLAGGED ELEVATIONS SHALL BE STAKED IN THE FIELD BY THE ENGINEER.
4. DRIVEWAYS ARE TO BE CONSTRUCTED PER STANDARD DWG. NO. 302. LOCATION, NUMBER AND SIZE TO BE DETERMINED AT TIME OF CONSTRUCTION WITH THE APPROVAL OF THE TRAFFIC ENGINEER.



BENCH MARK: BRONZE DISK IN CONCRETE POST STAMPED 60'-26'-68" 66.5' S.E. OF THE E. MAGNOLIA AND 52' N.E. E. OF TYLER ELEV. 742.243

PERRIS ENGINEERING
416 "D" STREET
PERRIS, CALIFORNIA 92370

Paul Dieges DATE: 6/13/21
PAUL R. DIEGES R.C.E. 13234

NO.	REVISIONS	DATE

CITY OF RIVERSIDE, CALIFORNIA
DEPARTMENT OF PUBLIC WORKS

APPROVED BY: [Signature]
DATE: 6/13/21

DESIGNED BY: D.J.B. DRAWN BY: H.T. CHECKED BY: [Signature]

PLAN 8 PROFILE
BANBURY DRIVE
862' S.E. OF MAGNOLIA AVE. TO
1424' S.E. OF MAGNOLIA AVE.
FOR PARCEL MAPS 358 36

PROJECT NO.
R-1497
SHEET 1 OF 1
HORIZ. SCALE: 1" = 40' VERT. SCALE: 1" = 4' FILE NO.