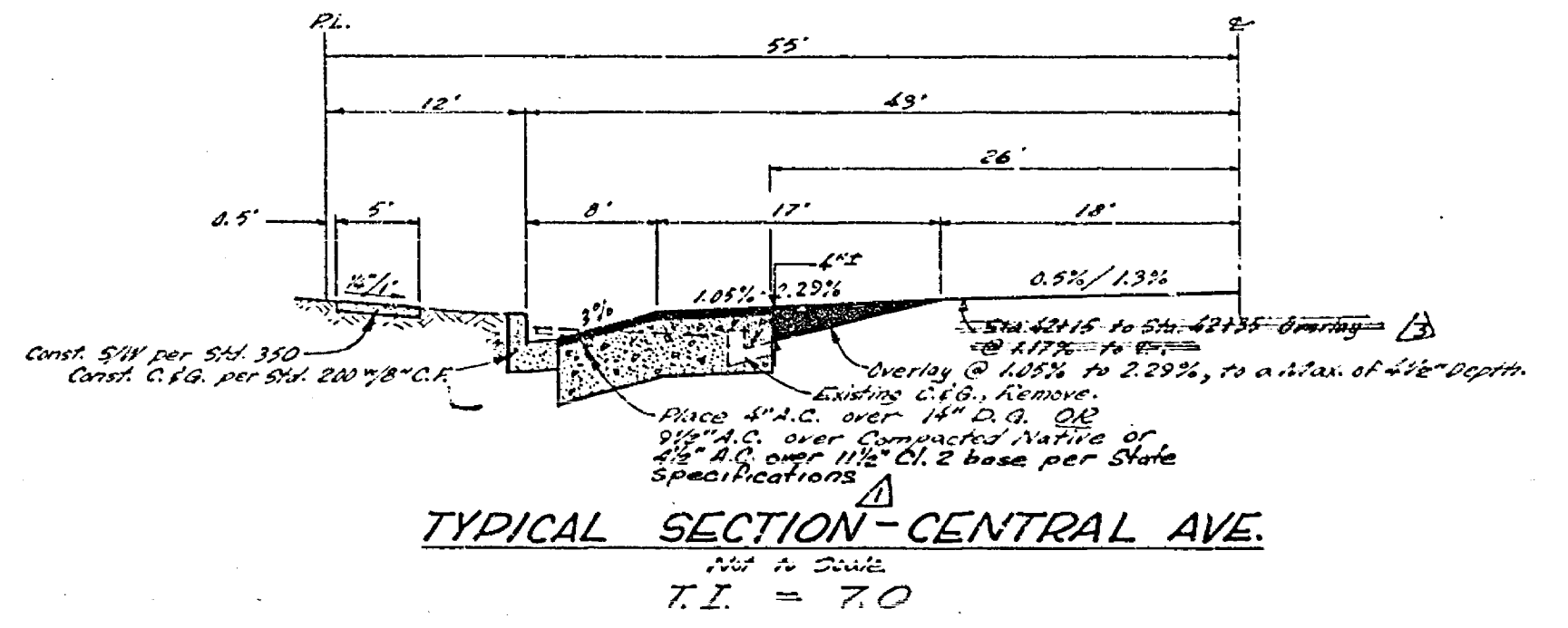


CENTRAL AVENUE
 RIVERSIDE AVENUE



- STREET LIGHT NOTES**
- All construction to comply with the latest revision of the City of Riverside Public Utilities Department Street Light Specification No. 119.
 - All street light standards shall be checked for clearance of driveways, fire hydrants, and radius returns.
 - Excavation for street light standard bases, pullboxes, and conduits must be done after installation of curbs and gutters, but before installation of sidewalks.
 - Contractor to obtain a street opening permit from the City of Riverside Public Works Department prior to any excavation in proposed or dedicated street right of way. Notify Public Works Department 24 hours in advance of any backfilling operations.
 - Backfill to be type and compacted as specified in the Standard Specifications for Public Works Construction, 1970 Edition and all supplements thereto.
 - This is a two-wire 240 volt multiple system.
 - Feed point to be confirmed at the time of construction.
 - See City of Riverside Installation Det. No. UGS-801 for Light Standard Details and Det. No. UGS-802 for Pullbox Details.
 - City of Riverside to connect street light cable in Pullboxes as indicated.
 - Concrete for street light foundations shall be 6.3 sack mix, 3,000 P.S.I., C/R No. 4001 per City of Riverside UGS-015.
 - Contractor shall obtain daily circuit clearances from the Public Utilities Department prior to working on any existing circuits. Call 787-7511 for clearance.

- STREET LIGHT LEGEND**
- Indicates relocated marbelite street light standard installed per City of Riverside Installation Drawing LI-15011.
 - Indicates 1" rigid steel conduit with 2 No. 8 copper cables per City of Riverside Street Light Specification No. 119.

GENERAL NOTES:
 Construction shall be in accordance with the Standard Specifications for Public Works construction, 1970 Edition and City of Riverside Standard Drawings.

CAUTION - PACIFIC TELEPHONE CABLES UNDERGROUND BEFORE EXCAVATING

CALL COLLECT:

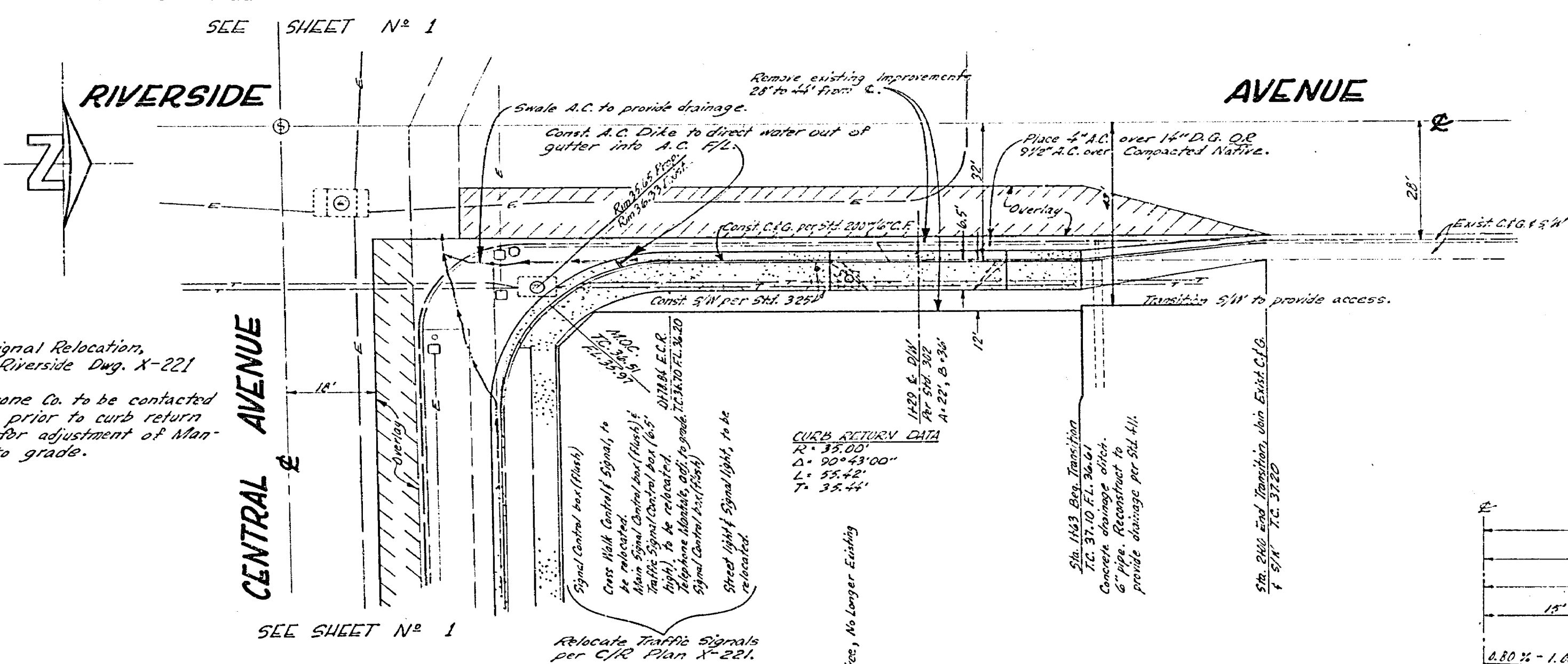
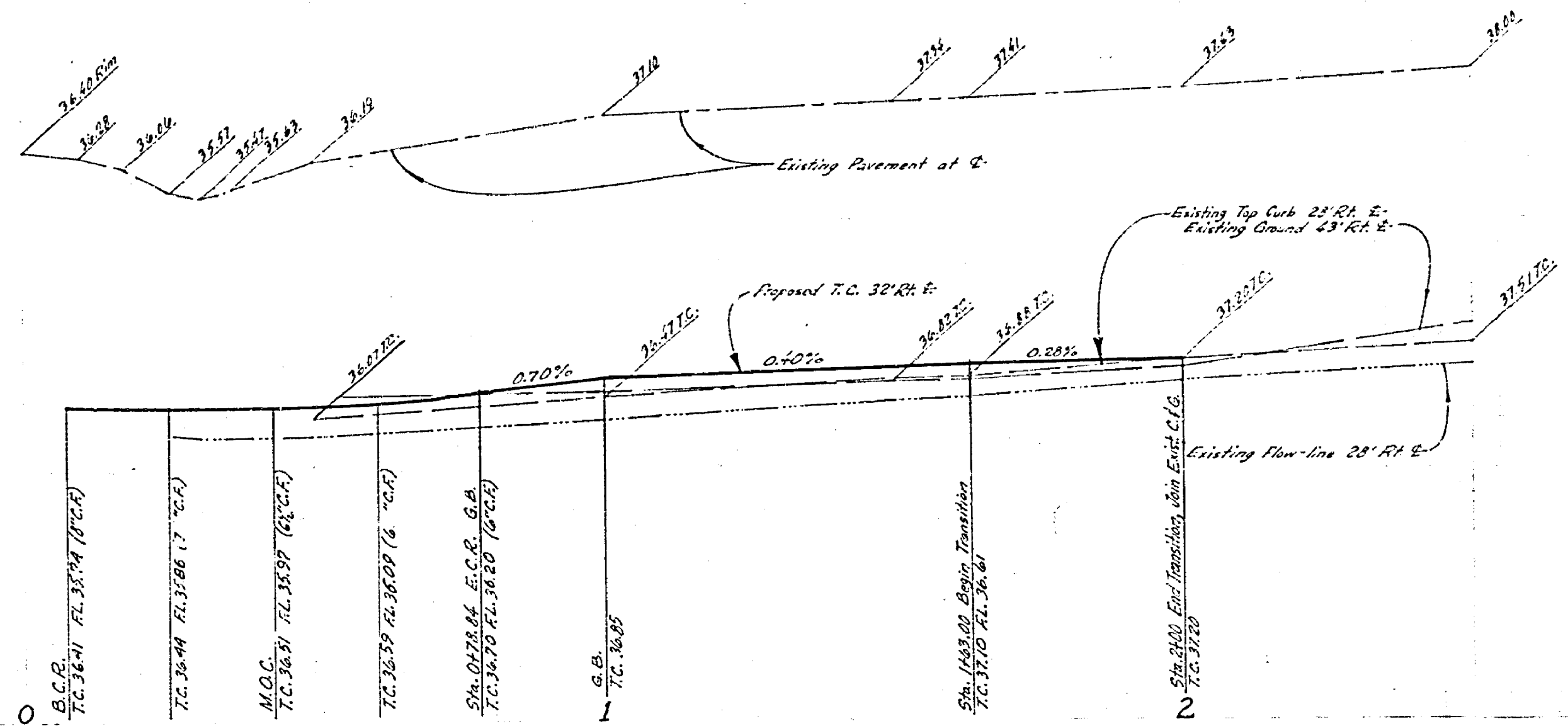
Orange County	714-433-0811	714-547-6406
Riverside County	714-684-0071	714-547-6406
Inyo County	714-684-0071	714-547-6406
San Bernardino County	714-684-0071	714-547-6406
Los Angeles County	213-421-3111	24 HOUR SERVICE
Ventura County	213-421-3111	24 HOUR SERVICE
San Diego County	714-298-0599	714-232-0027

FOR FREE CABLE LOCATING SERVICE

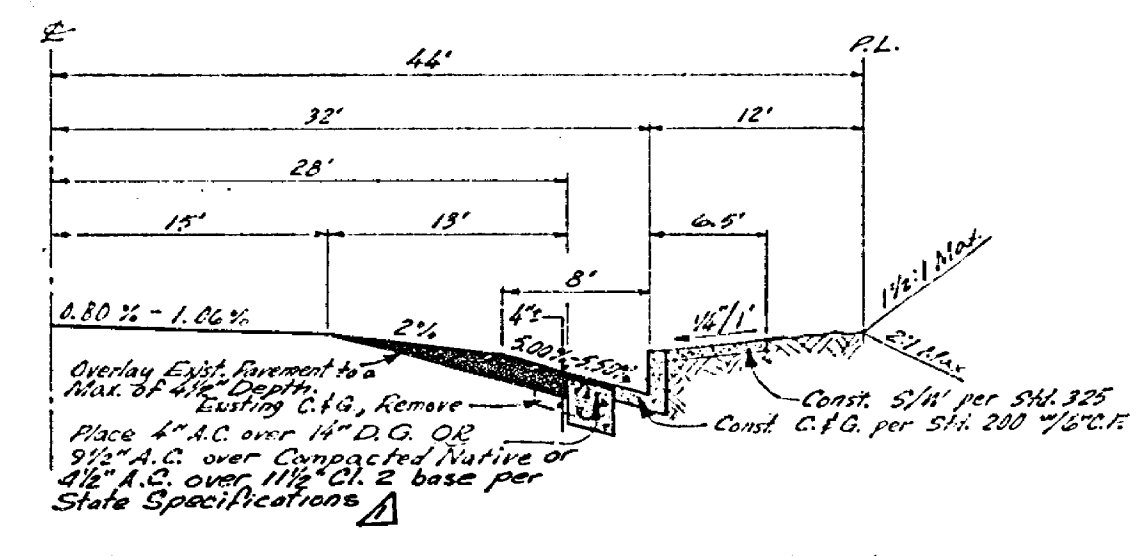
APPROVED FOR STREET LIGHTS ONLY	J. F. DAVIDSON ASSOCIATES CIVIL ENGINEERS - SURVEYORS - PLANNERS RIVERSIDE, CALIFORNIA	CITY OF RIVERSIDE, CALIFORNIA DEPARTMENT OF PUBLIC WORKS	STREET PLAN AND PROFILE CENTRAL AVENUE NORTH SIDE RIVERSIDE AVENUE TO 400' ± E/W R.M. 24	PROJECT NO. L5 - 13451 R-1501 SHEET 1 OF 2 FILE NO. 3399
UTILITIES ENGINEER	APPROVED BY: [Signature] DATE: 3-19-71	APPROVED BY: [Signature] DATE: 3-19-71	HORIZ. SCALE: 1" = 20' VERT. SCALE: 1" = 2'	
DATE: 3-2-71	DESIGNED BY: A.W. DRAWN BY: J.M.C. CHECKED BY: B.B.	DESIGNED BY: A.W. DRAWN BY: J.M.C. CHECKED BY: B.B.		

838
837 C/L
836
835

838
837 RT.
836
835



NOTE:
1. For Traffic Signal Relocation, see City of Riverside Eng. X-221
2. Pacific Telephone Co. to be contacted one (1) week prior to curb return construction for adjustment of Man-Hole Cover to grade.



TYPICAL SECTION - RIVERSIDE AVE.
Not to Scale
T.I. = 7.0

CAUTION - PACIFIC TELEPHONE CABLES UNDERGROUND BEFORE EXCAVATING
CALL COLLECT:
After Hours & Holidays
Orange County 714-633-0811 714-547-4806
Riverside County 714-684-0271 714-547-4806
Inyo County 714-884-0271 714-547-4806
San Bernardino County 714-684-0271 714-547-4806
Los Angeles County 213-621-3111 24 HOUR SERVICE
Ventura County 213-621-3111
San Diego County 714-298-0595 714-232-0027
FOR FREE CABLE LOCATING SERVICE

J. F. DAVIDSON ASSOCIATES
CIVIL ENGINEERS - SURVEYORS - PLANNERS
RIVERSIDE, CALIFORNIA
APPROVED BY *Robert S. Davidson* DATE 3-19-71
R.E. No. 136511
W.O. 284771 FOR Continental Services F.B.

NO.	DATE	REVISIONS

CITY OF RIVERSIDE, CALIFORNIA
DEPARTMENT OF PUBLIC WORKS
APPROVED BY *[Signature]* DATE 3-19-71
OFFICE ENGINEER
TRAFFIC DIVISION
ASSISTANT CITY ENG.

STREET PLAN AND PROFILE
RIVERSIDE AVENUE
EAST SIDE
CENTRAL AVENUE TO 150' N/1/4
R.M. 26
HORIZ. SCALE: 1" = 20'
VERT. SCALE: 1" = 2'

PROJECT NO. 15-73431
R-1501
SHEET 2 OF 2
FILE NO. 3399