

CAUTION
PACIFIC TELEPHONE
CABLES UNDERGROUND
BEFORE EXCAVATING
CALL COLLECT:

Orange County	714-433-0811	714-547-6600
Riverside County	714-684-0071	714-547-6600
Santa Ana County	714-684-0071	714-547-6600
San Bernardino County	714-684-0071	714-547-6600
Los Angeles County	213-421-3111	24 HOUR SERVICE
Ventura County	213-421-3111	24 HOUR SERVICE
San Diego County	714-298-0595	714-232-0037

FOR FREE CABLE LOCATING SERVICE

BENCH MARKS:
 R.R. SPIKE IN POLE NO. 689220-H, S.E. COR. JACKSON & LINCOLN. F.B. 680/42 ELEV. 878.347
 R.R. SPIKE IN POLE NO. 717921 ON N.W. SIDE OF LINCOLN BETWEEN JACKSON & IRVING. F.B. R3/41 ELEV. 867.007
 R.R. SPIKE IN POLE NO. 18782-J AT S.W. COR. LINCOLN & IRVING. F.B. R3/41 ELEV. 898.137

J. F. DAVIDSON ASSOCIATES
 CIVIL ENGINEERS - SURVEYORS - PLANNERS
 RIVERSIDE, CALIFORNIA
 APPROVED BY: *John W. Coffey* DATE 12-2-78
 F.N.A. 17550

FOR GENERAL AND CONSTRUCTION NOTES SEE SHEET 1

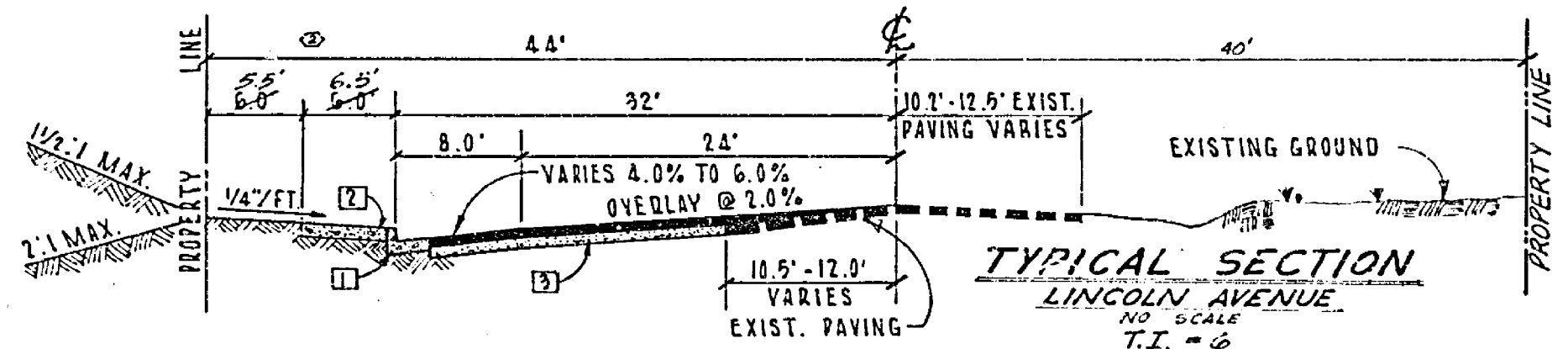
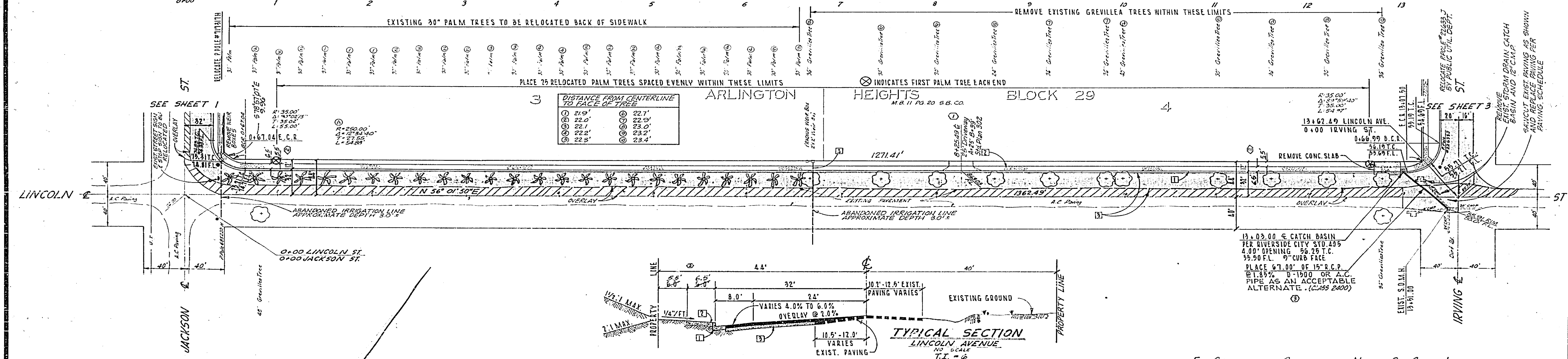
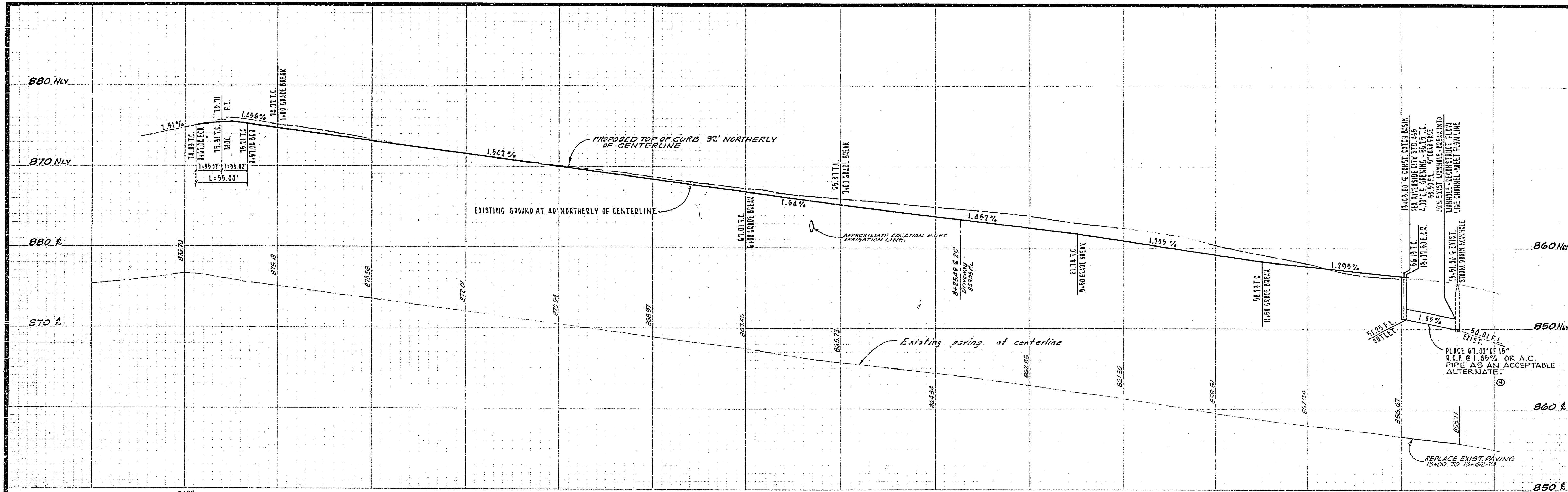
DESIGNED BY	M.W.C.
DRAWN BY	K.L.B.
CHECKED BY	U.W.C.

CITY OF RIVERSIDE, CALIFORNIA
 DEPARTMENT OF PUBLIC WORKS

APPROVED BY	BY	DATE
OFFICE ENGINEER	<i>[Signature]</i>	12/27
CITY DEPARTMENT	<i>[Signature]</i>	12/27
TRAFFIC DIVISION	<i>[Signature]</i>	12/27
ASSISTANT CITY ENGINEER	<i>[Signature]</i>	12/27

STREET PLAN & PROFILE
 RIVERSIDE UNIFIED SCHOOL DIST.
 JACKSON ST.
 C-43-701
 HORIZ. SCALE: 1" = 50'
 VERT. SCALE: 1" = 5'

PROJECT NO. **R-1506**
 SHEET **2** OF **4**
 FILE NO. 3393



BENCH MARKS:
 R.R. SPIKE IN POLE NO. 695720-H. S.E. COR. JACKSON & LINCOLN. F.B. 680/241 ELEV. 878.347
 R.R. SPIKE IN POLE NO. 717321 ON N.W. SIDE OF LINCOLN BETWEEN JACKSON & IRVING. F.B. R3/41 ELEV. 867.607
 R.R. SPIKE IN POLE NO. 13702-J AT S.W. COR. LINCOLN & IRVING. F.B. R3/41 ELEV. 858.137

J. F. DAVIDSON ASSOCIATES
 CIVIL ENGINEERS - SURVEYORS - PLANNERS
 RIVERSIDE, CALIFORNIA
 APPROVED BY: *John W. Canty* DATE 12-9-70
 R.E. No. 11550

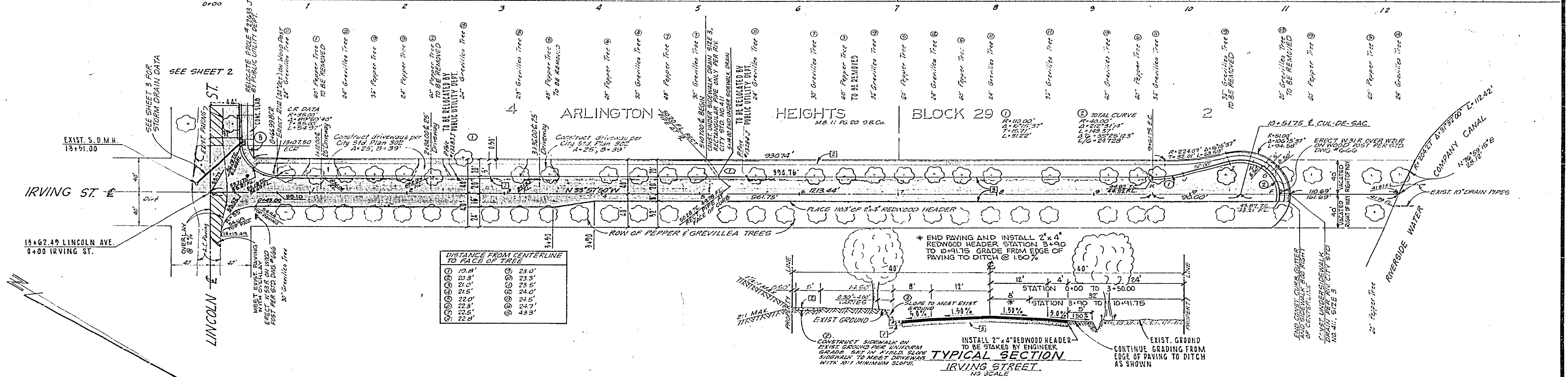
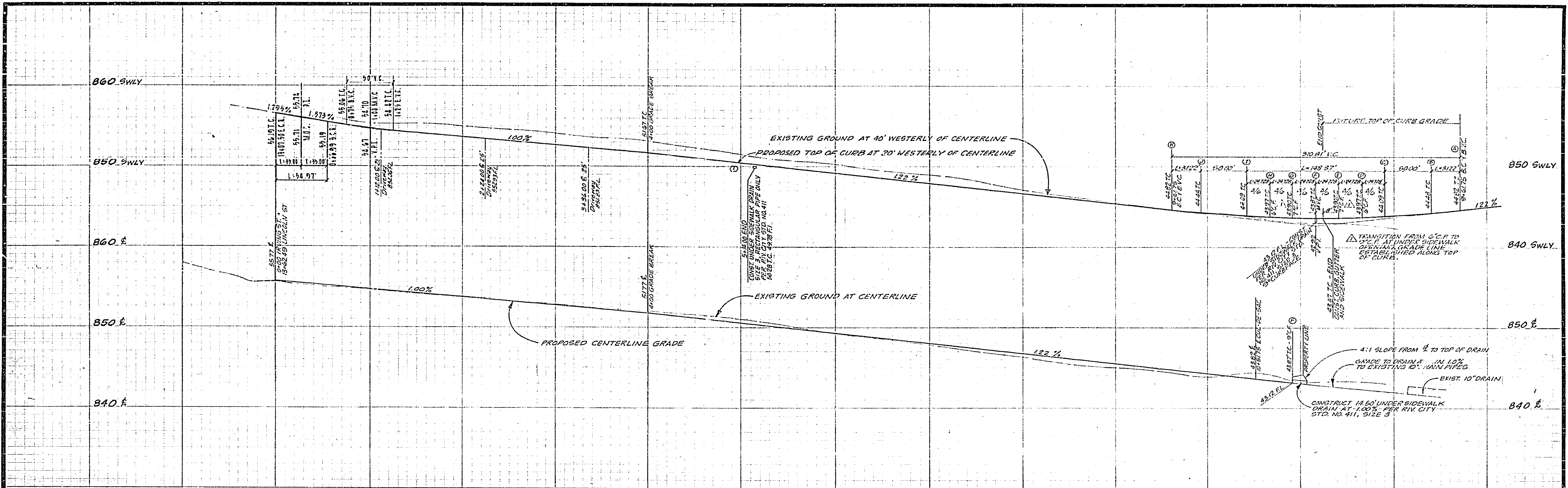
NO.	DESCRIPTION	DATE
1	ADDED A.C. PIPE AS DRAIN DRAINAGE	12-9-70
2	CHANGED SW DIMENSIONS TO CORRECT ERROR	12-9-70
3	ADDED DRIVEWAY LOCATIONS	12-9-70

CITY OF RIVERSIDE, CALIFORNIA
 DEPARTMENT OF PUBLIC WORKS
 APPROVED BY: *[Signature]* DATE 12-9-70
 ASSISTANT CITY ENGINEER

STREET PLAN & PROFILE
 RIVERSIDE UNIFIED SCHOOL DIST.
 LINCOLN AVE.
 C-43-701
 HORIZ. SCALE: 1" = 20'
 VERT. SCALE: 1" = 3'

PROJECT NO. **R-1506**
 SHEET **3** OF **4**
 FILE NO. 3393

FOR GENERAL AND CONSTRUCTION NOTES SEE SHEET 1



BENCH MARKS:
 R.R. SPIKE IN POLE NO. 685220-N. S.E. COR. JACKSON & LINCOLN. ELEV. 878.347
 R.R. SPIKE IN POLE NO. 717521 ON N.W. SIDE OF LINCOLN BETWEEN JACKSON & IRVING. F.B. 83/41 ELEV. 867.007
 R.R. SPIKE IN POLE NO. 19227-J AT S.W. COR. LINCOLN & IRVING. ELEV. 868.137

J. F. DAVIDSON ASSOCIATES
 CIVIL ENGINEERS - SURVEYORS - PLANNERS
 RIVERSIDE, CALIFORNIA

APPROVED BY: *J. W. Coody* DATE: 12-9-70
 R.E. NO. 5250

CITY OF RIVERSIDE, CALIFORNIA
 DEPARTMENT OF PUBLIC WORKS

APPROVED BY: *[Signature]* DATE: 12/11/70
 OFFICE ENGINEER
 PARK DEPARTMENT
 TRAFFIC DIVISION
 ASSISTANT CITY ENGINEER

STREET - PLAN & PROFILE
 RIVERSIDE UNIFIED SCHOOL DIST.
 IRVING ST.
 C-43-701

PROJECT NO. **R-1506**
 SHEET **4** OF **4**
 FILE NO. 3393

HORIZ. SCALE: 1" = 50'
 VERT. SCALE: 1" = 5'