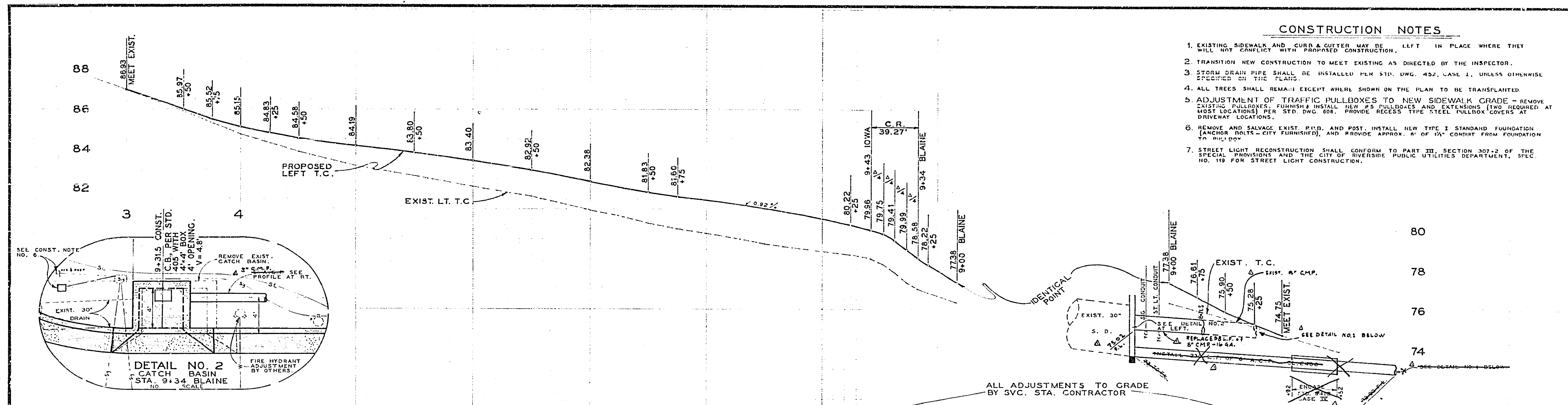


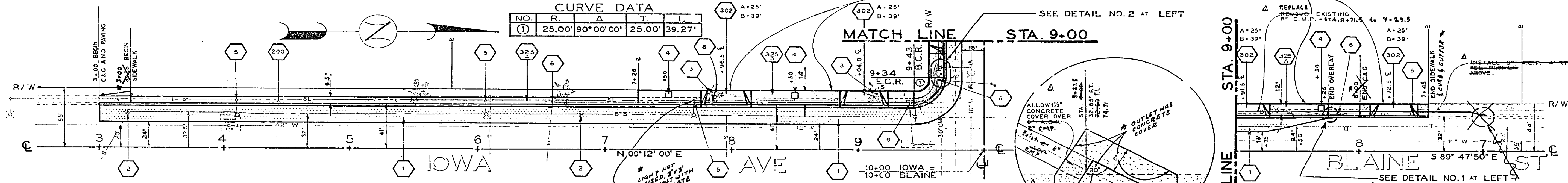
**CONSTRUCTION NOTES**

- EXISTING SIDEWALK AND CURB & GUTTER MAY BE LEFT IN PLACE WHERE THEY WILL NOT CONFLICT WITH PROPOSED CONSTRUCTION.
- TRANSITION NEW CONSTRUCTION TO MEET EXISTING AS DIRECTED BY THE INSPECTOR.
- STORM DRAIN PIPE SHALL BE INSTALLED PER STD. DWG. 452, CASE I, UNLESS OTHERWISE SPECIFIED ON THE PLANS.
- ALL TREES SHALL REMAIN EXCEPT WHERE SHOWN ON THE PLAN TO BE TRANSPORTED.
- ADJUSTMENT OF TRAFFIC PULLBOXES TO NEW SIDEWALK GRADE - REMOVE EXISTING PULLBOXES, FURNISH & INSTALL NEW 25" PULLBOXES AND EXTENSIONS (TWO REQUIRED AT MOST LOCATIONS) PER STD. DWG. 606. PROVIDE RECESS TYPE STEEL PULLBOX COVERS AT DRIVEWAY LOCATIONS.
- REMOVE AND SALVAGE EXIST. P.U.D. AND POST. INSTALL NEW TYPE I STANDARD FOUNDATION (ANCHOR BOLTS - CITY FURNISHED), AND PROVIDE APPROX. 8" OF 1/2" CONDUIT FROM FOUNDATION TO PULLBOX.
- STREET LIGHT RECONSTRUCTION SHALL CONFORM TO PART III, SECTION 307-2 OF THE SPECIAL PROVISIONS AND THE CITY OF RIVERSIDE PUBLIC UTILITIES DEPARTMENT, SPEC. NO. 119 FOR STREET LIGHT CONSTRUCTION.



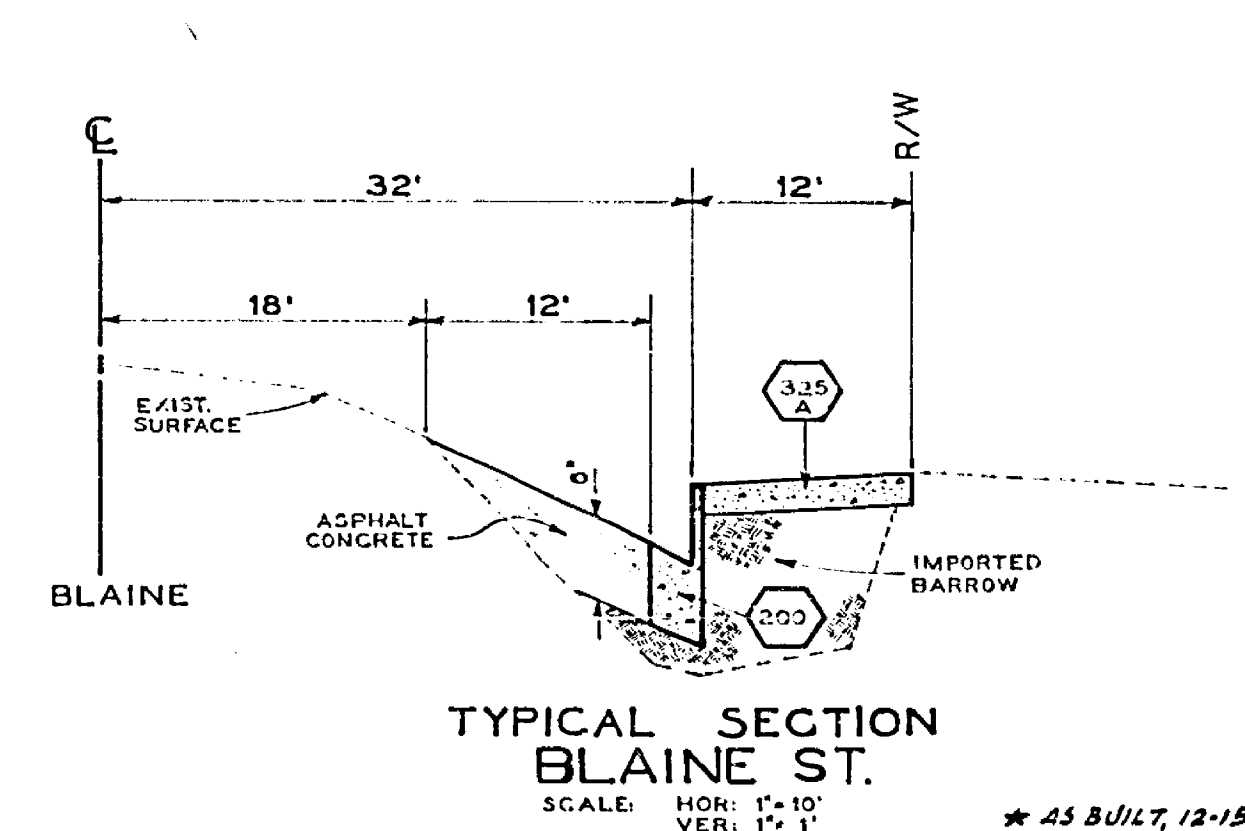
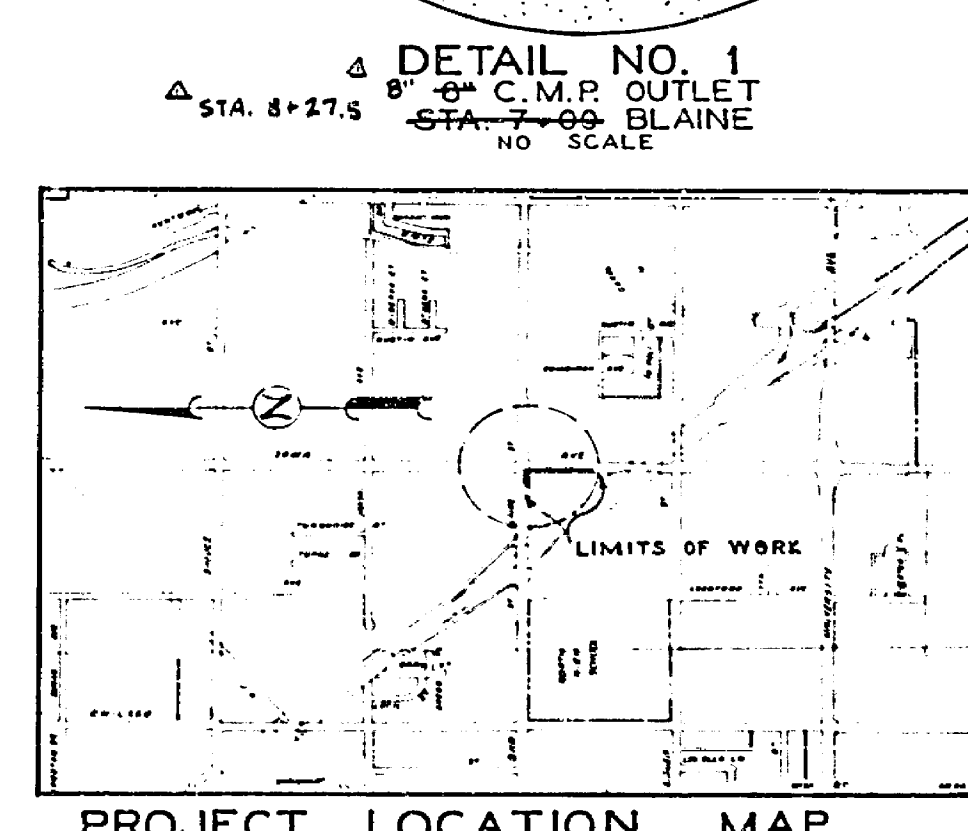
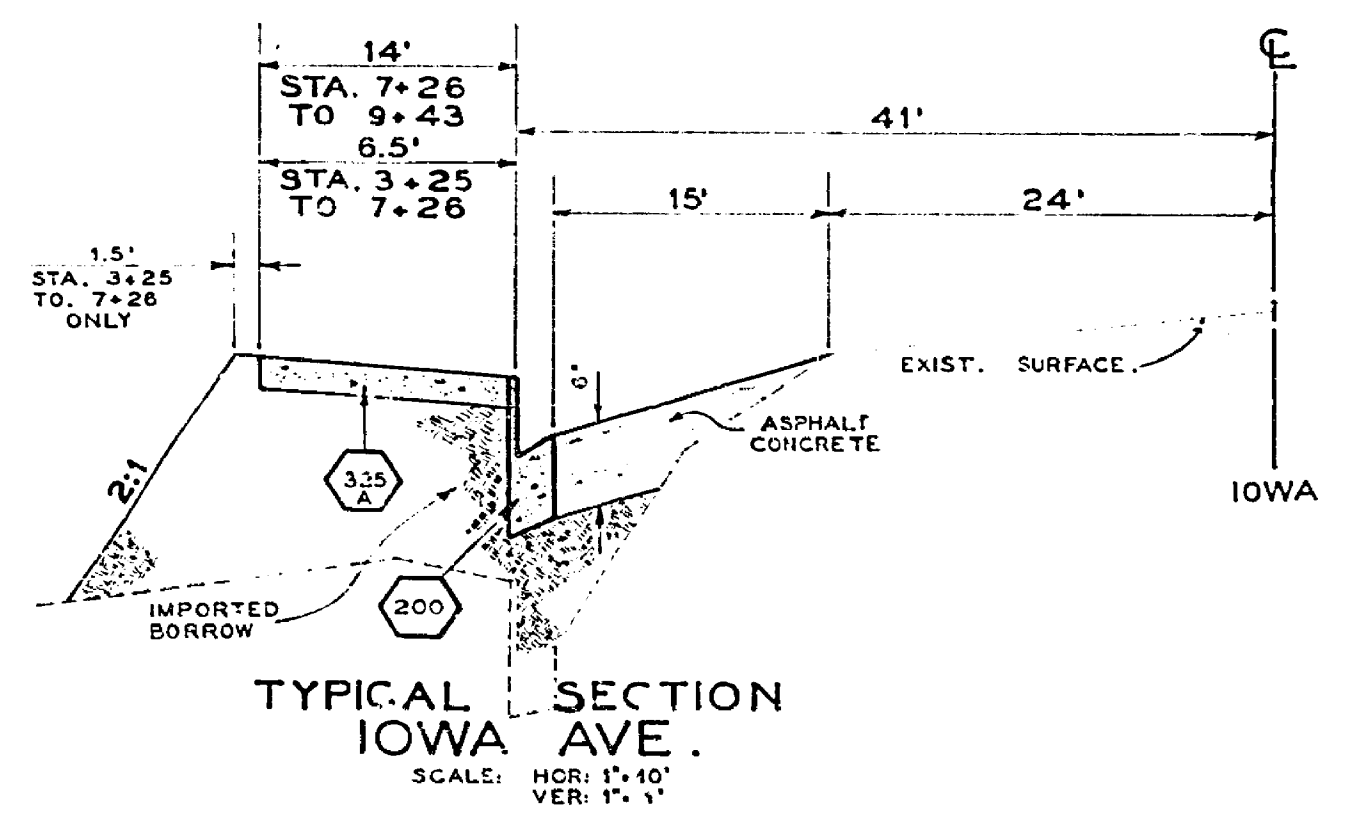
**CURVE DATA**

NO.	R	Δ	T	L
1	25.00'	90°00'00"	25.00'	39.27'



**CONSTRUCTION LEGEND**

- CENTER LINE      ————
- RIGHT-OF-WAY LINE      - - - -
- SUBDIVISION LOT LINE      ————
- | SECTION | PLAN     | DESCRIPTION  |
|---------|----------|--|
| 200     | [Symbol] | CONST. CURB AND GUTTER PER STD. DWG. 200. CURB FACE + 6"   |
| 302     | [Symbol] | CONST. DRIVEWAY APPROACH PER STD. DWG. 302. A=25', B=39'   |
| 325     | [Symbol] | CONST. SIDEWALK PER STD. DWG. 325A. WIDTH AS SHOWN IN TYPICAL SECTIONS.                              |
| 1       | [Symbol] | OVERLAY EXISTING PAVEMENT WITH ASPHALT CONCRETE AND IMPORTED BORROW AS INDICATED ON TYPICAL SECTION. |
| 2       | [Symbol] | ADJUST MANHOLE TO GRADE.   |
| 3       | [Symbol] | RELOCATE PALM TREE TO BLOCKOUT LOCATIONS ON IOWA.  |
| 4       | [Symbol] | LEAVE 2x5" BLOCKOUT IN SIDEWALK AT LOCATIONS INDICATED. START 1' FROM BACK OF SIDEWALK.              |
| 5       | [Symbol] | RECONSTRUCT STREET LIGHT SYSTEM PER CONSTRUCTION NOTE #7.  |
| 6       | [Symbol] | ADJUST TRAFFIC PULLBOX PER CONSTRUCTION NOTE #5.   |



FB. 929-72,3  
PK. NAIL IN CB.  
RET. N.W. COR.  
IOWA & BLAINE.  
ELEV. 977.28

DESIGNED BY: [Signature] DRAWN BY: [Signature] CHECKED BY: [Signature]	CITY OF RIVERSIDE, CALIFORNIA DEPARTMENT OF PUBLIC WORKS APPROVED BY: [Signature] DATE: 9/29/71	<b>IOWA AT BLAINE</b> 700' S. IOWA TO 250' W. BLAINE HORIZ. SCALE: 1"=40' VERT. SCALE: 1"=2'	PROJECT NO. 225 <b>R-1516</b> SHEET 1 OF 1 FILE NO.
--	--	--	--