

- GENERAL NOTES**
- Construction shall be in accordance with Standard Specifications for Public Works, Construction, 1970 Edition, and Standard Drawings.
  - It shall be the responsibility of the contractor to clear the right of way in accordance with the provisions of the Law as it affects each utility including Irrigation Lines and appurtenances and at no cost to the City and/or Arlington Mutual Water Co.
  - Prime coat, seal coat and paint binder are required.
  - Trim edge of existing pavement where new pavement joins existing pavement to a clean straight edge. Construct match-up paving as shown and overlay as directed in the field to produce a smooth crown section. Engineer Estimates the overlay pavement to be: 30 tons.
  - Notify the City of Riverside Water Dept. 24 hrs. prior to construction for scheduling of water relocations.
  - The Subdivider shall arrange for a soil test to be made by a soils engineer after the street's have been prepared to rough grade. Depth of Base material and A.C. paving shall be determined by the City of Riverside Design Standards and Test Procedures.

**ESTIMATE OF QUANTITIES**

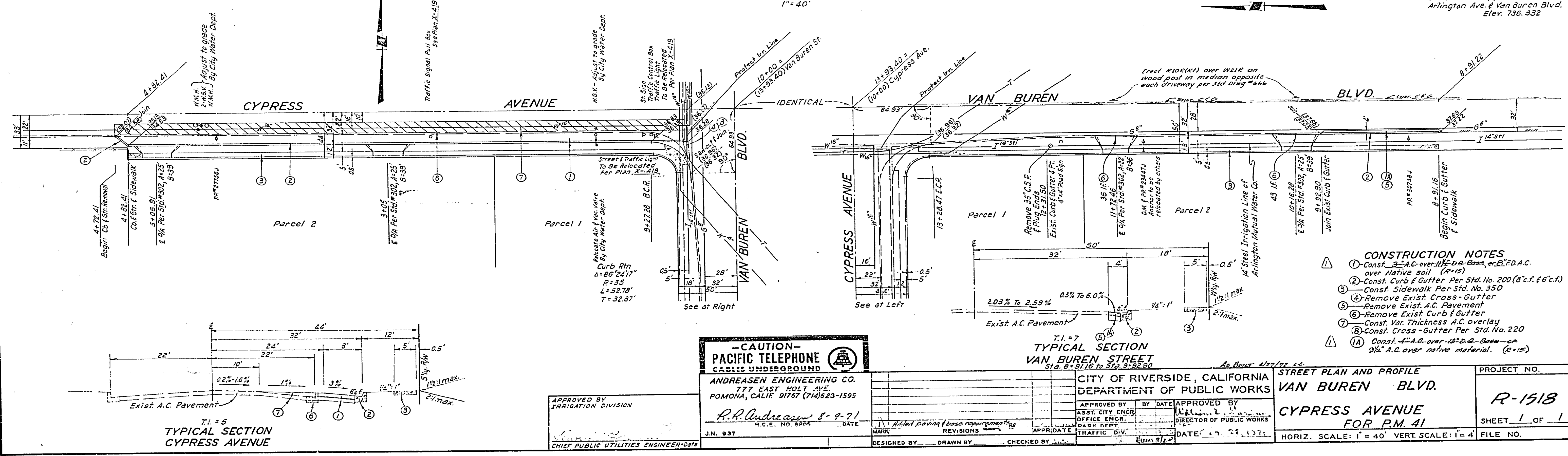
1.	5,009	s.f.	2 1/2" A.C. over 5" Class 2 AB, or 5" F.D.A.C.
2.	4,849	s.f.	Var. Thickness A.C. overlay
3.	106	l.f.	8" Curb & Gutter Per Std. #200
4.	381	l.f.	6" Curb & Gutter Per Std. #200
5.	53	l.f.	Curb Only
6.	470	s.f.	Cross-Gutter Per Std. #220
7.	4,269	s.f.	Sidewalk Per Std. #350
8.	1,312	s.f.	Driveway Approach Per Std. #302
9.	275	c.y.	Street Excavation
10.	413	s.f.	Remove A.C. Pavement
11.	534	l.f.	Remove P.C.C. Curb & Gutter
12.	61	l.f.	Remove P.C.C. Curb Only
13.	465	s.f.	Remove P.C.C. Cross-Gutter
14.	1	ea.	Remove 36" C.S.P. & Plug Ends

Note:  
This City has not checked these quantities and assumes no responsibility as to their accuracy.

**PROFILE SCALES**  
Horiz. 1" = 40'  
Vert. 1" = 4'

**PLAN SCALE**  
1" = 40'

**BENCH MARK NO. 63-F**  
Brass disc capped @ & inter. of  
Arlington Ave. & Van Buren Blvd.  
Elev. 736.332



- CONSTRUCTION NOTES**
- Const. 3" A.C. over 1 1/2" D.B. Base, or 2" F.D.A.C. over Native soil (R-15)
  - Const. Curb & Gutter Per Std. No. 200 (8" c.f. & 6" c.f.)
  - Const. Sidewalk Per Std. No. 350
  - Remove Exist. Cross-Gutter
  - Remove Exist. A.C. Pavement
  - Remove Exist. Curb & Gutter
  - Const. Var. Thickness A.C. Overlay
  - Const. Cross-Gutter Per Std. No. 220
  - Const. 4" A.C. over 1 1/2" D.B. Base or 3 1/2" A.C. over native material. (R-15)

**- CAUTION -**  
**PACIFIC TELEPHONE**  
CABLES UNDERGROUND

ANDREASEN ENGINEERING CO.  
777 EAST HOLT AVE.  
POMONA, CALIF. 91767 (714) 823-1595

R.P. Andreasen 8-9-71  
R.C.E. No. 8205

APPROVED BY: IRRIGATION DIVISION  
CHIEF PUBLIC UTILITIES ENGINEER-DAT

**TYPICAL SECTION VAN BUREN STREET**  
Sta. 9+31.16 to Sta. 9+92.90

CITY OF RIVERSIDE, CALIFORNIA  
DEPARTMENT OF PUBLIC WORKS

APPROVED BY: ASST. CITY ENGR. OFFICE ENGR. DATE: 7-28-71

APPROVED BY: DIRECTOR OF PUBLIC WORKS DATE: 7-28-71

DESIGNED BY: DRAWN BY: CHECKED BY:

**STREET PLAN AND PROFILE**  
**VAN BUREN BLVD.**  
**CYPRESS AVENUE FOR P.M. 41**

PROJECT NO. **R-1518**  
SHEET **1** OF **1**  
FILE NO.

HORIZ. SCALE: 1" = 40' VERT. SCALE: 1" = 4'