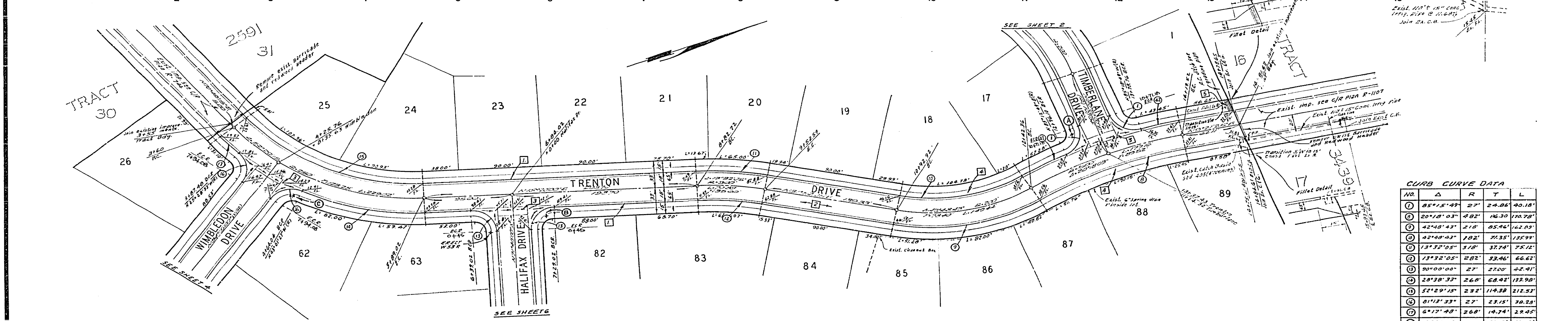
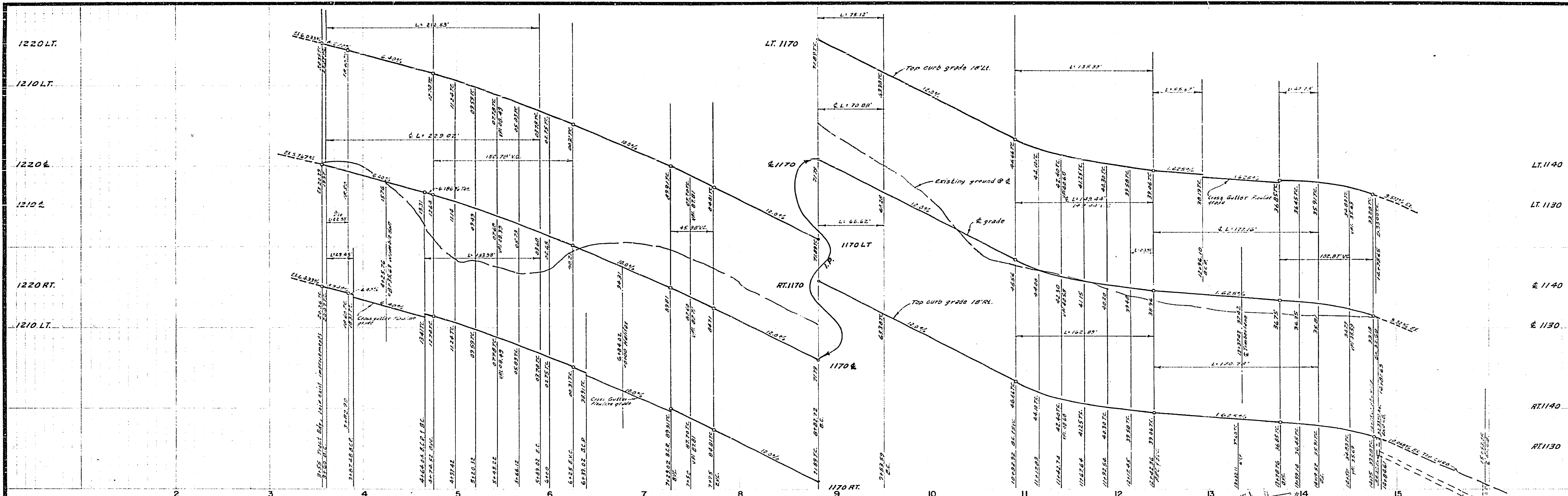


CURB CURVE DATA

NO.	Δ	R	T	L
①	05°15'49"	27'	24.84'	40.18'
②	50°04'53"	102'	101.05'	104.50'
③	30°04'55"	218'	121.04'	220.99'
④	29°44'22"	260'	71.76'	139.11'
⑤	29°44'22"	232'	61.60'	120.42'
⑥	30°36'57"	263'	93.89'	100.63'
⑦	30°36'57"	272'	81.20'	156.76'

BENCH MARK: Elev. 1107.66 RR nail and City L.S. on conc. base of light standard in E median west side of intersection of 112 Sabelo & Country Club Dr. City Eng. 02/4/35

ALBERT A. WEBB ASSOCIATES CIVIL ENGINEERS RIVERSIDE, CALIFORNIA APPROVED BY: <u>E. N. Webb</u> DATE: <u>6/4/71</u> R.E. No. <u>22123</u> <small>W.C. 2250 FOR: <u>HOES & GOODWIN</u> F.B. 1/72</small>	CITY OF RIVERSIDE, CALIFORNIA PUBLIC WORKS DEPARTMENT APPROVED BY: _____ DATE: _____ PRINCIPAL ENGINEER PARK DEPARTMENT IN CHARGE CHIEF PUB. WKS. ENGR.	STREET PLAN AND PROFILE TIMBERLANE DRIVE TRACT NO. 3825	ACCOUNT NO. DRAWING NUMBER R-1520 SHEET 2 OF 2 68-258-A
		DESIGNED BY: <u>DRB</u> DRAWN BY: <u>BFL</u> CHECKED BY: <u>FB</u>	SCALE: <u>1" = 40'</u> VERT. <u>1" = 10'</u>



CURB CURVE DATA

NO.	Δ	R	T	L
①	85°15'49"	27'	24.86'	40.18'
②	20°18'03"	4.02'	16.30'	170.78'
③	42°48'43"	2.18'	05.46'	162.03'
④	42°48'43"	1.02'	21.35'	125.99'
⑤	13°32'05"	5.18'	37.74'	75.12'
⑥	13°32'05"	2.02'	33.46'	66.62'
⑦	30°00'00"	25'	27.00'	42.41'
⑧	28°38'32"	2.68'	68.42'	133.98'
⑨	52°29'15"	2.32'	114.38'	212.53'
⑩	01°13'33"	27'	23.15'	30.28'
⑪	6°17'48"	2.68'	14.74'	22.45'
⑫	4°40'14"	5.18'	21.12'	42.23'
⑬	6°09'28"	5.18'	27.86'	55.67'

BENCH MARK: Elev. 117.66 P.S. nail and City for an exact base of level established on the original W & L map of subdivision of the 1/4th & country Chd. of City R.E. 84135

APPROVAL FOR CONST. CB. 15" CONC. PIPE AT N. TRACT DIV. DATE 3/2/71

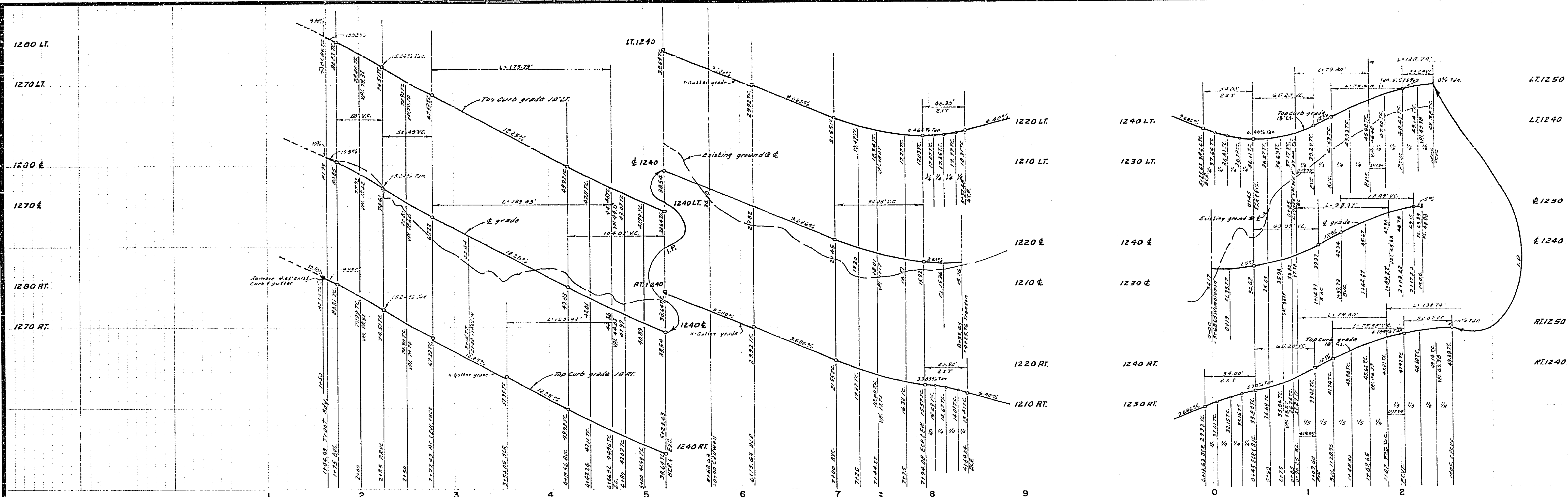
ALBERT A. WEBS ASSOCIATES
CIVIL ENGINEERS
RIVERSIDE, CALIFORNIA
APPROVED BY: *[Signature]* DATE 4/6/71
R.E. No. 5575

NO.	REVISIONS	DATE	BY	CHKD.

CITY OF RIVERSIDE, CALIFORNIA
PUBLIC WORKS DEPARTMENT
APPROVED BY: *[Signature]* DATE 10/1/71
PRINCIPAL ENGINEER
PARK DEPARTMENT
TRAFFIC DIVISION
CHIEF OF PUBLIC WORKS

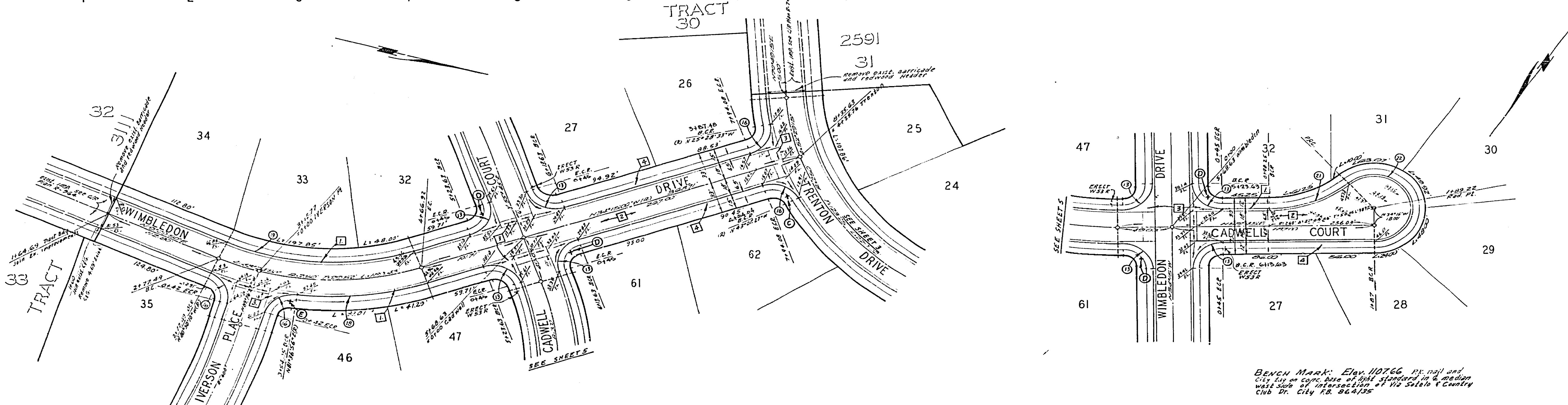
STREET PLAN AND PROFILE
TRENTON DRIVE
TRACT NO. 3825

ACCOUNT No.
DRAWING NUMBER
R-1520
SHEET 3 OF 2
68-258-A



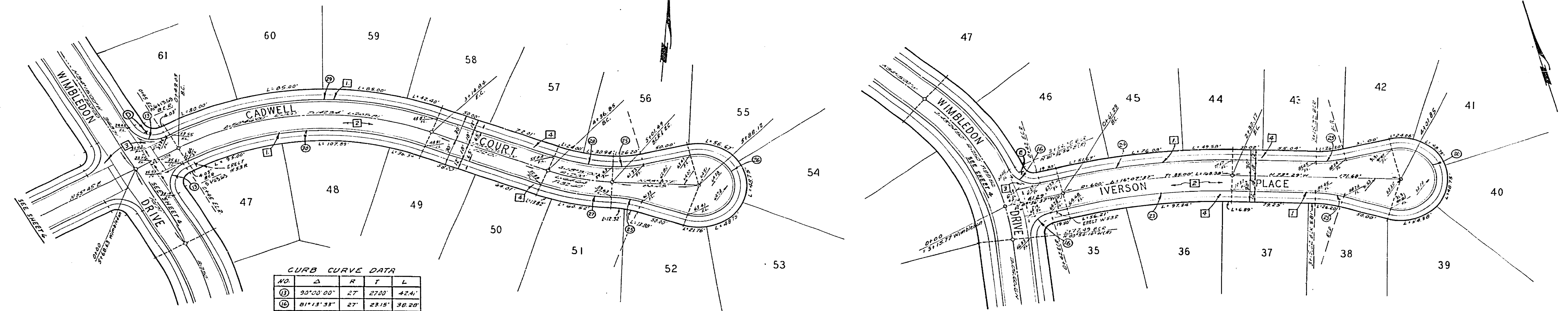
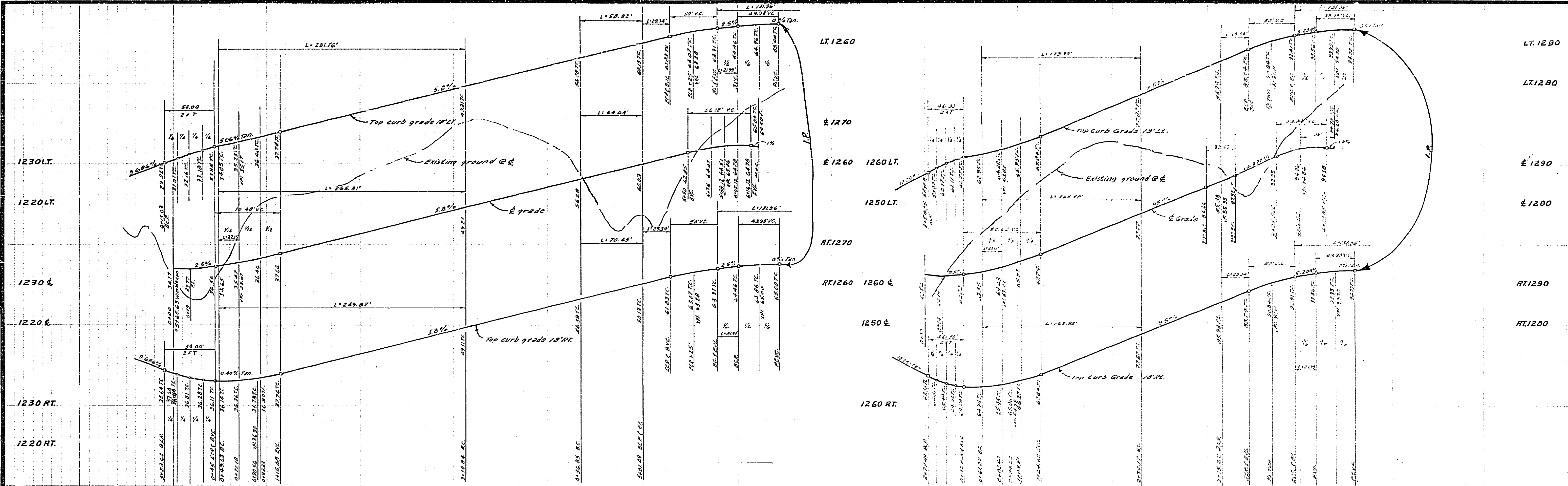
CURB CURVE DATA

No.	Δ	R	T	L
①	90°00'00"	27'	27.00'	42.41'
②	81°13'33"	27'	23.15'	38.28'
③	25°51'56"	268'	61.54'	120.99'
④	43°24'50"	233'	42.36'	175.79'
⑤	10°49'12"	112'	41.60'	79.80'
⑥	220°49'12"	36'	—	138.74'



BENCH MARK: Elev. 107.66 ft. nail and City 211 on core. Date of 1944 standard 10 ft. median west side of intersection of 1/2 Soto & Country Club Dr. City F.B. 864135

ALBERT A. WEBB ASSOCIATES CIVIL ENGINEERS RIVERSIDE, CALIFORNIA APPROVED BY: <i>Paul N. Webb</i> DATE: <i>5/16/51</i> N.E. NO. <i>3825</i>		CITY OF RIVERSIDE, CALIFORNIA PUBLIC WORKS DEPARTMENT APPROVED BY: _____ DATE: _____ TRAFFIC DIVISION CHIEF PUBLIC WORKS ENGINEER		STREET PLAN AND PROFILE WIMBLEDON DRIVE CADWELL COURT TRACT NO. 3825 SCALE: <i>1" = 40' PLAN 1" = 10' PROFILE</i>		ACCOUNT NO. DRAWING NUMBER R-1520 SHEET <i>4</i> OF <i>9</i> 68-258-A
---	--	--	--	---	--	--

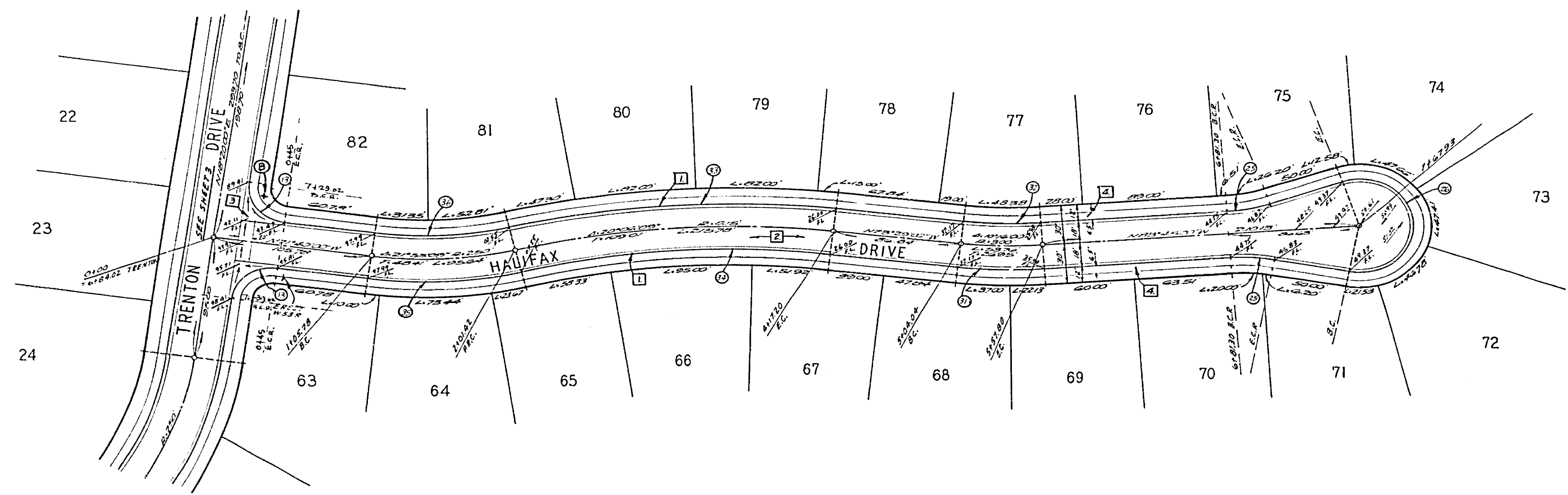
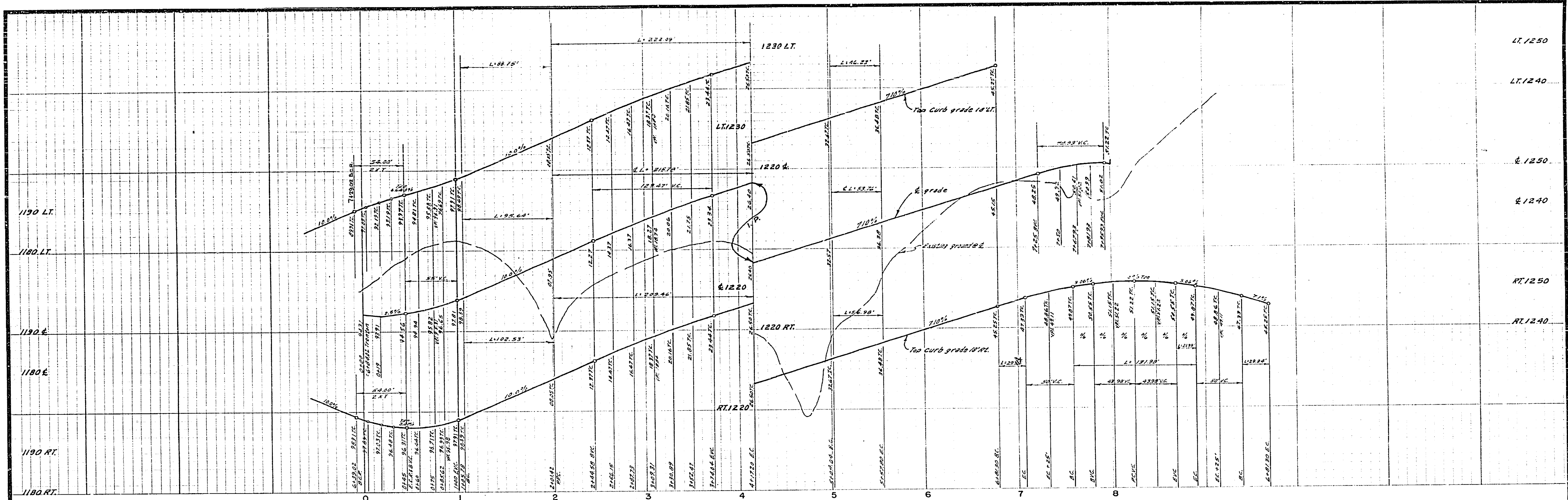


CURB CURVE DATA

NO.	Δ	R	T	L
①	33°00'00"	27'	27.00'	42.41'
②	01°13'33"	27'	29.15'	39.20'
③	16°07'37"	582'	82.45'	163.82'
④	12°07'37"	618'	82.55'	173.95'
⑤	15°00'39"	112'	14.76'	23.34'
⑥	20°01'18"	36'	—	131.96'
⑦	18°31'00"	218'	35.54'	70.45'
⑧	18°31'00"	182'	29.67'	58.82'
⑨	50°46'00"	318'	163.88'	281.72'
⑩	50°46'00"	282'	133.80'	249.87'

BENCH MARK: Elev. 107.66, P.K. 1011 and City 100 at C&G. 2500 at 1041. Stationed on a median westside of intersection of Via Solana & Country Club Dr. City R.R. 06/1/95

ALBERT A. WEBB ASSOCIATES CIVIL ENGINEERS RIVERSIDE, CALIFORNIA APPROVED BY: <i>P. N. Will</i> DATE: 6/16/71		CITY OF RIVERSIDE, CALIFORNIA PUBLIC WORKS DEPARTMENT APPROVED BY: _____ BY: _____ DATE: _____ TRAFFIC DIVISION CHIEF PUBLIC WORKS ENGINEER		STREET PLAN AND PROFILE CADWELL COURT IVERSON PLACE TRACT NO. 3825 SCALE: HORIZ. 1"=50' VERT. 1"=10'		ACCOUNT NO. _____ DRAWING NUMBER R-1520 SHEET 5 OF 9 68-258-A
--	--	--	--	---	--	--

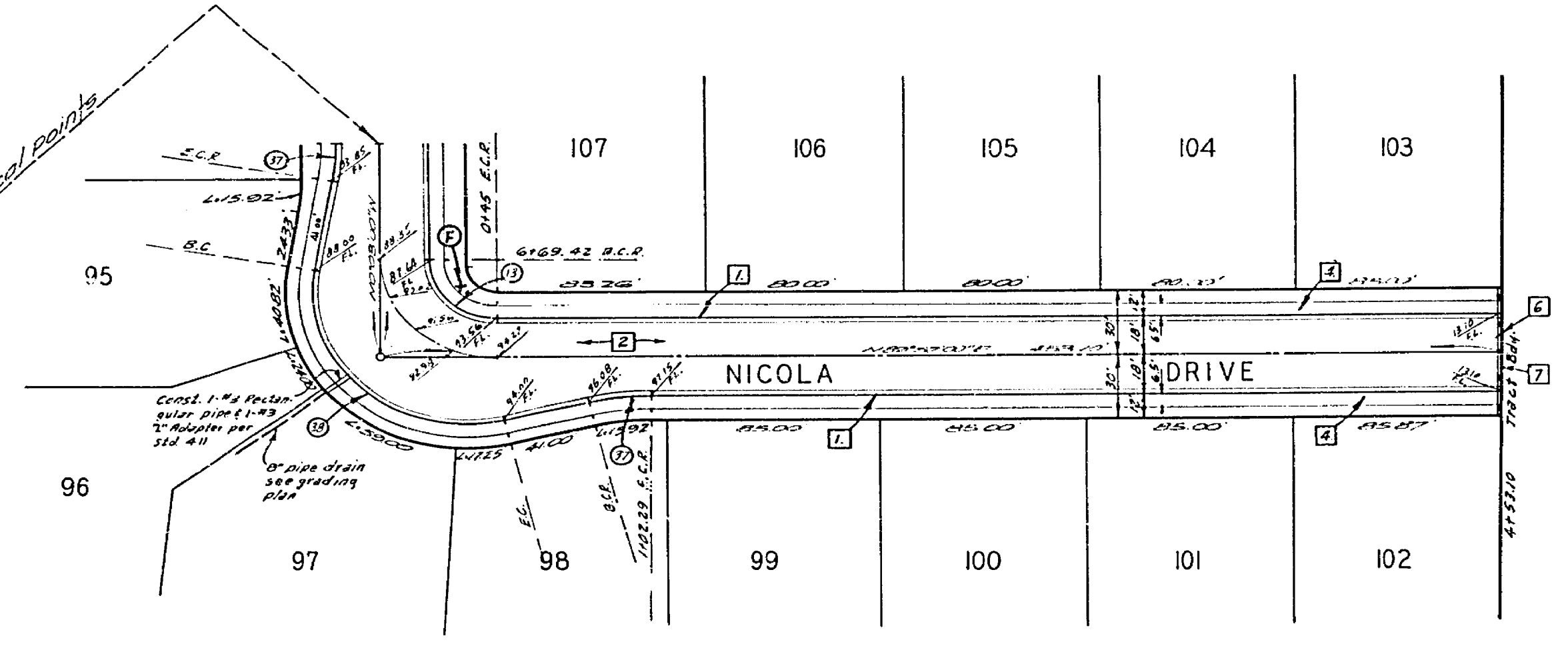
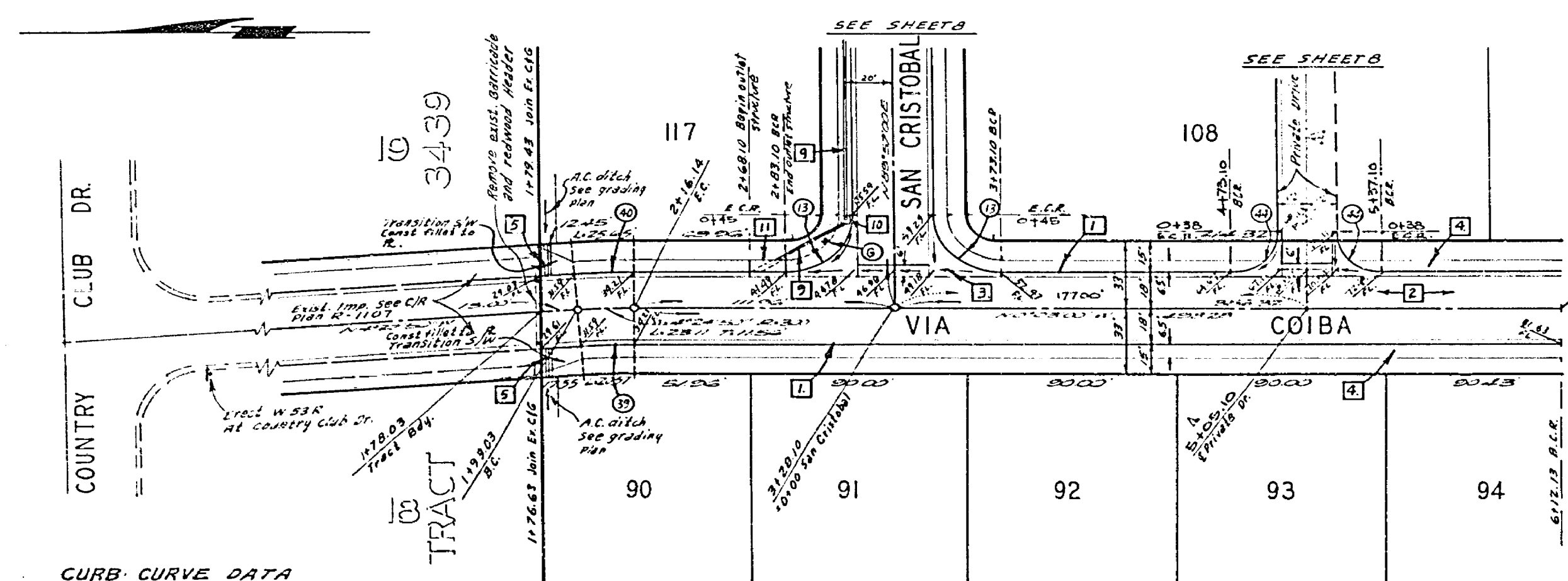
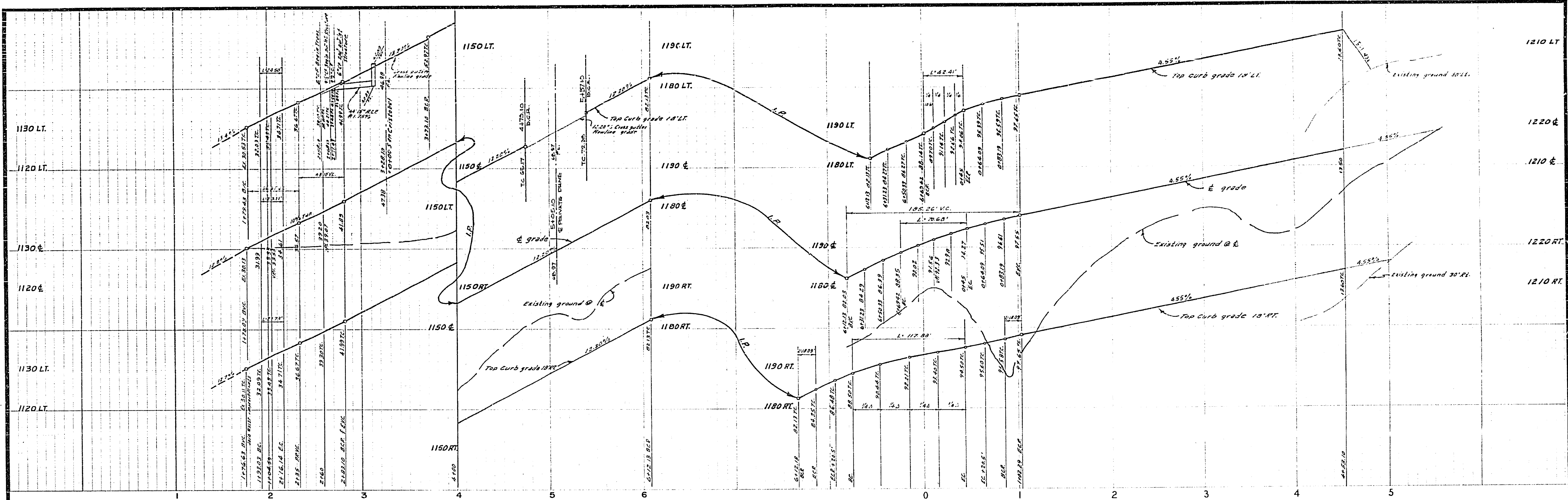


CURB CURVE DATA

NO.	Δ	R	T	L
①	90°00'00"	27'	23.00'	42.41'
②	15°00'30"	1/2"	14.76'	29.30'
③	20°01'18"	35'	134.25'	131.96'
④	10°16'00"	213'	28.57'	50.38'
⑤	10°16'00"	232'	25.33'	50.53'
⑥	20°06'03"	433'	112.20'	227.09'
⑦	20°06'03"	397'	105.82'	209.46'
⑧	21°55'09"	268'	57.90'	102.53'
⑨	21°55'49"	232'	44.93'	88.75'

BENCH MARK: Elev. 1107.66 (1/4 mile)
 City is on cont. base of 1944 standard in E.
 median, westside of intersection of Via Sulez
 & Country Club Dr. City of Riverside

ALBERT A. WEBB ASSOCIATES CIVIL ENGINEERS RIVERSIDE, CALIFORNIA APPROVED BY: <i>P. A. Webb</i> DATE: 4/16/71	CITY OF RIVERSIDE, CALIFORNIA PUBLIC WORKS DEPARTMENT		STREET PLAN AND PROFILE HALIFAX DRIVE TRACT NO. 3825	ACCOUNT NO. DRAWING NUMBER R-1520 SHEET 6 OF 9 68-258-A
	DESIGNED BY: D.R.B. DRAWN BY: B.L. CHECKED BY: B.B.	APPROVED BY: <i>[Signature]</i> DATE: 4/16/71 TRAFFIC DIVISION CHIEF PUBLIC WORKS ENGINEER	APPROVED BY: <i>[Signature]</i> DATE: 4/16/71 DIRECTOR OF PUBLIC WORKS	SCALE: HORIZ. 1"=50' VERT. 1"=10'

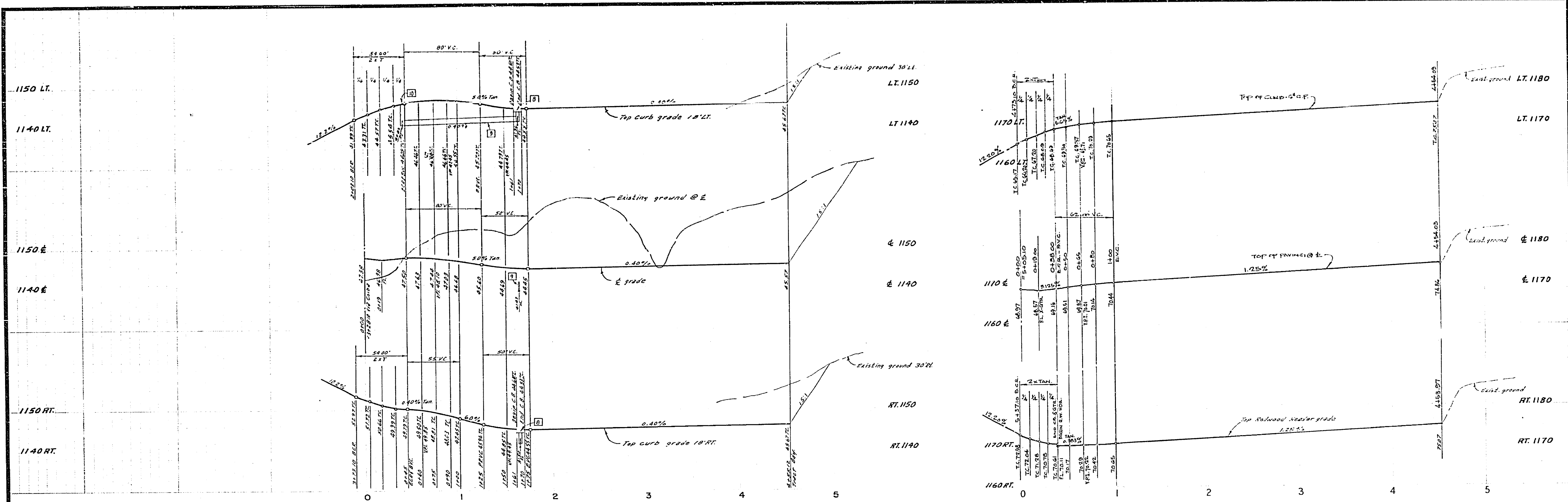


CURB CURVE DATA

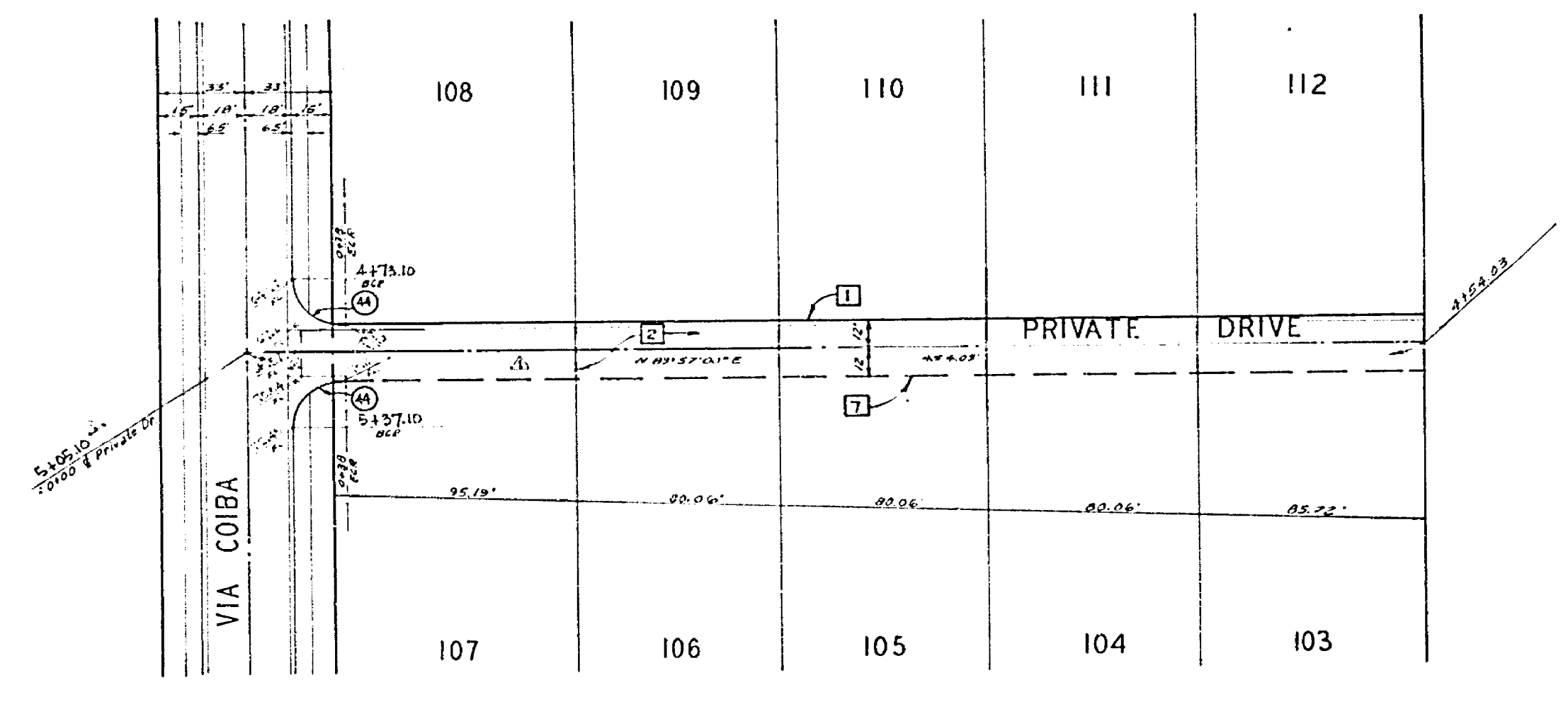
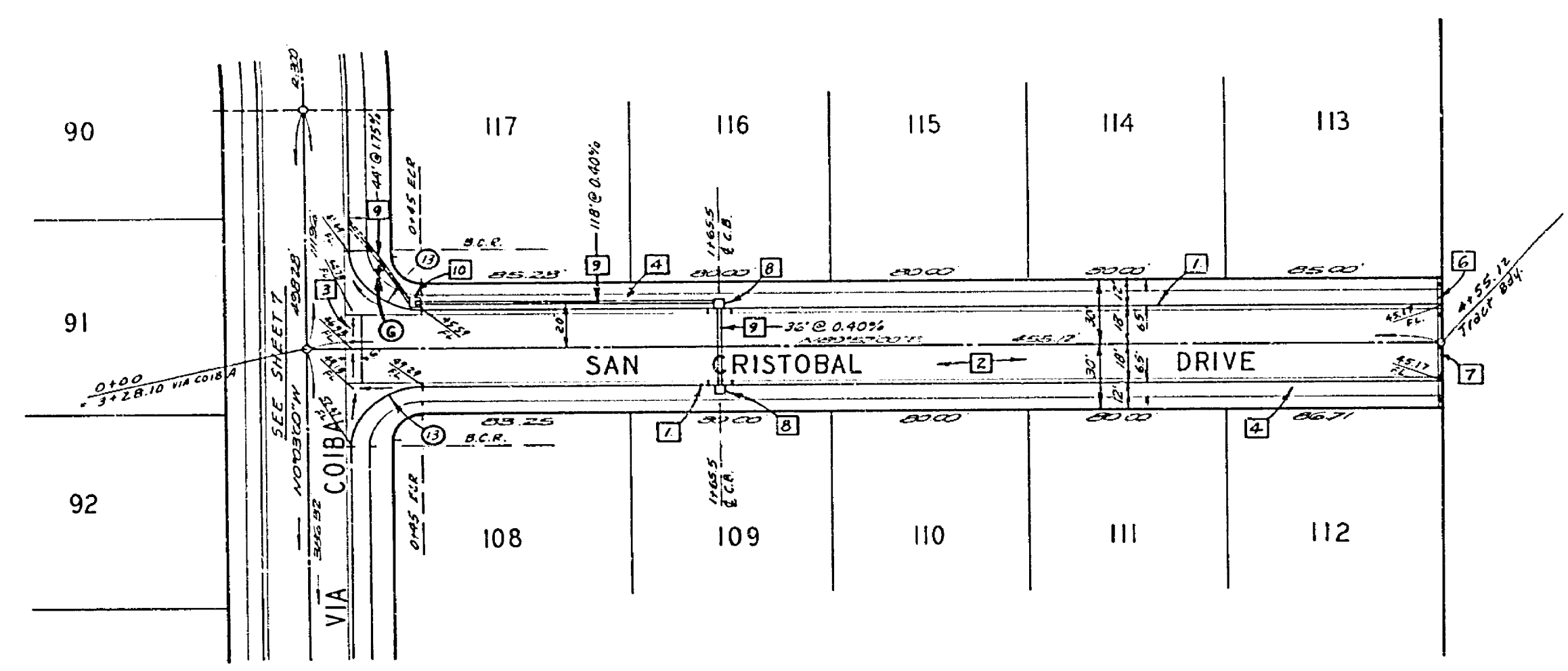
NO.	Δ	R	T	L
①	30°00'00"	27'	2200'	42.41'
②	10°21'43"	100'	9.07'	18.09'
③	110°03'26"	61'	89.30'	117.88'
④	4°24'50"	282'	10.87'	21.72'
⑤	4°24'50"	310'	12.26'	24.50'
⑥	90°00'00"	20'	2000'	31.42'

BENCH MARK: Elev. 1107.66 ft. M.S.L. and City 144 on conc. base of 1944 standard on E median westside of intersection of Via Satele & Country Club Dr. City R.S. 864/35.

ALBERT A. WEBB ASSOCIATES CIVIL ENGINEERS RIVERSIDE, CALIFORNIA APPROVED BY: <i>R. A. N. D. D.</i> DATE: 6/11/74 R.E. No. 201723	DESIGNED BY: _____ DRAWN BY: _____ CHECKED BY: <i>GD</i>	CITY OF RIVERSIDE, CALIFORNIA PUBLIC WORKS DEPARTMENT		STREET PLAN AND PROFILE VIA COIBA NICOLA DRIVE TRACT NO. 3825		ACCOUNT NO. DRAWING NUMBER R-1520
		APPROVED BY: _____ DATE: _____ CHIEF PUBLIC WORKS ENGINEER	APPROVED BY: _____ DATE: _____ DIRECTOR OF PUBLIC WORKS	SCALE: HORIZ. 1"=50' VERT. 1"=10'		SHEET 7 OF 9 68-258-A



*NOTE:
SEE REVISED TYPICAL SECTION ON SHEET 1
FOR PRIVATE DRIVE.



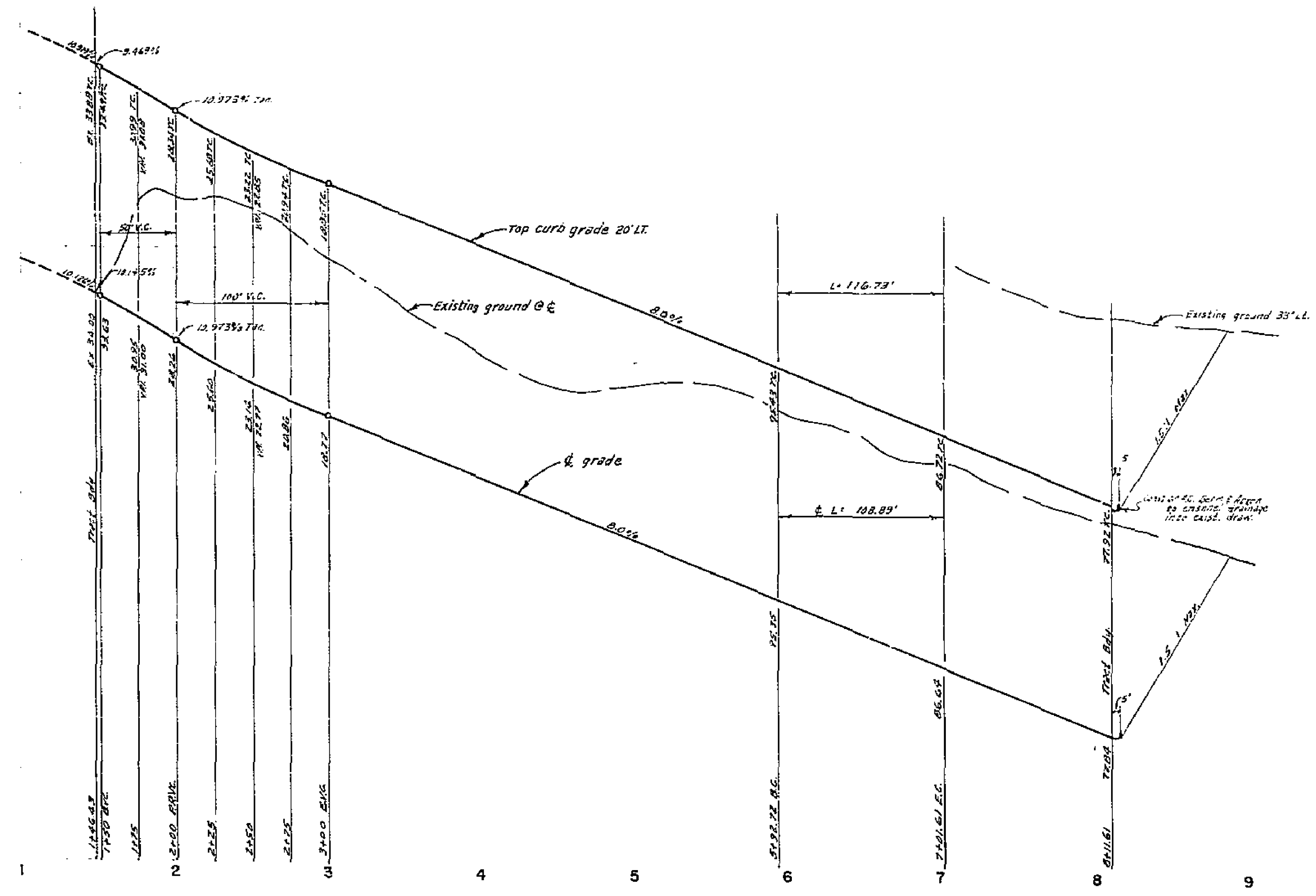
CURB CURVE DATA

NO.	Δ	R	T	L
1	35°00'00"	27'	27.00'	42.41'
2	35°00'00"	27'	27.00'	42.41'

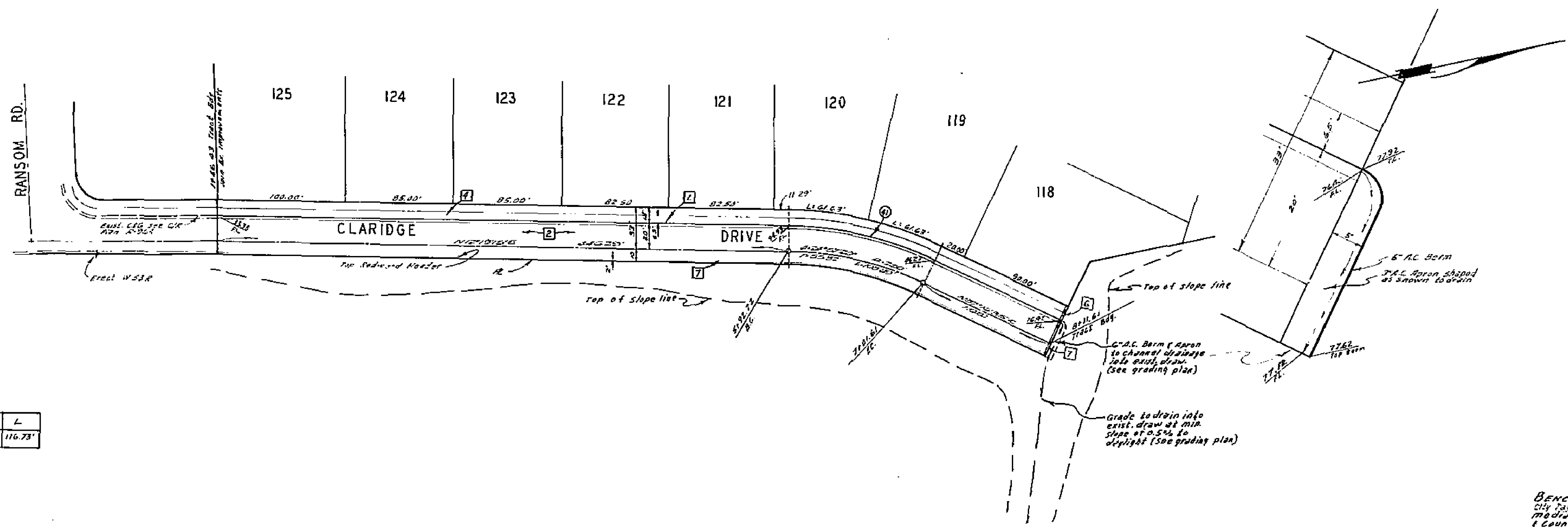
BENCH MARK: Elev. 1107.66
4 1/2" x 1 1/2" on curb base of light standard on E.
median west side of intersection of Via Coiba
& Country Club Dr. City R.S. 864,135

ALBERT A. WEBB ASSOCIATES CIVIL ENGINEERS RIVERSIDE, CALIFORNIA APPROVED BY: <i>P. H. WIDE</i> DATE: 11/15/51 R.E. No. 3073 W.O. 40209 FOR: <i>1160 & 1170</i> F.B.	CITY OF RIVERSIDE, CALIFORNIA PUBLIC WORKS DEPARTMENT APPROVED BY: _____ DATE: _____ PRINCIPAL ENGINEER TRAFFIC DIVISION CHIEF PUBLIC WORKS ENGINEER	STREET PLAN AND PROFILE		ACCOUNT NO.
		SAN CRISTOBAL PRIVATE DRIVE TRACT NO. 3825		DRAWING NUMBER R-1520 SHEET 2 OF 2 68-258-A

1340 LT.
1330 LT.
1340 E.
1330 E.



LT. 1280
LT. 1270
E. 1280
E. 1270



CURB CURVE DATA

NO.	Δ	R	T	L
①	24°57'20"	260'	57.31'	116.73'

BENCH MARK: Elev. 1177.66 ft. msl. and City Day on curb base of 1944 Standard 10 ft. median west side of intersection on Via Solera & Country Club Dr. City F.B. 844/35

ALBERT A. WEBB ASSOCIATES CIVIL ENGINEERS RIVERSIDE, CALIFORNIA APPROVED BY: <i>[Signature]</i> DATE: 4/14/71 R.E. NO. 2525	MARK: _____ REVISIONS: _____ APPR. DATE: _____ DESIGNED BY: _____ DRAWN BY: _____ CHECKED BY: _____	CITY OF RIVERSIDE, CALIFORNIA PUBLIC WORKS DEPARTMENT	STREET PLAN AND PROFILE CLARIDGE DRIVE TRACT NO. 3825	ACCOUNT No. _____ DRAWING NUMBER R-1520 SHEET 9 OF 9 68-258-A
		APPROVED BY: _____ PRINCIPAL ENGINEER: _____ PARK DEPARTMENT: _____ TRAFFIC DIVISION: _____ CHIEF PUBLIC WORKS ENGINEER: _____	APPROVED BY: _____ DIRECTOR OF PUBLIC WORKS: _____ DATE: _____	SCALE: HORIZ. 1" = 20' VERT. 1" = 10'