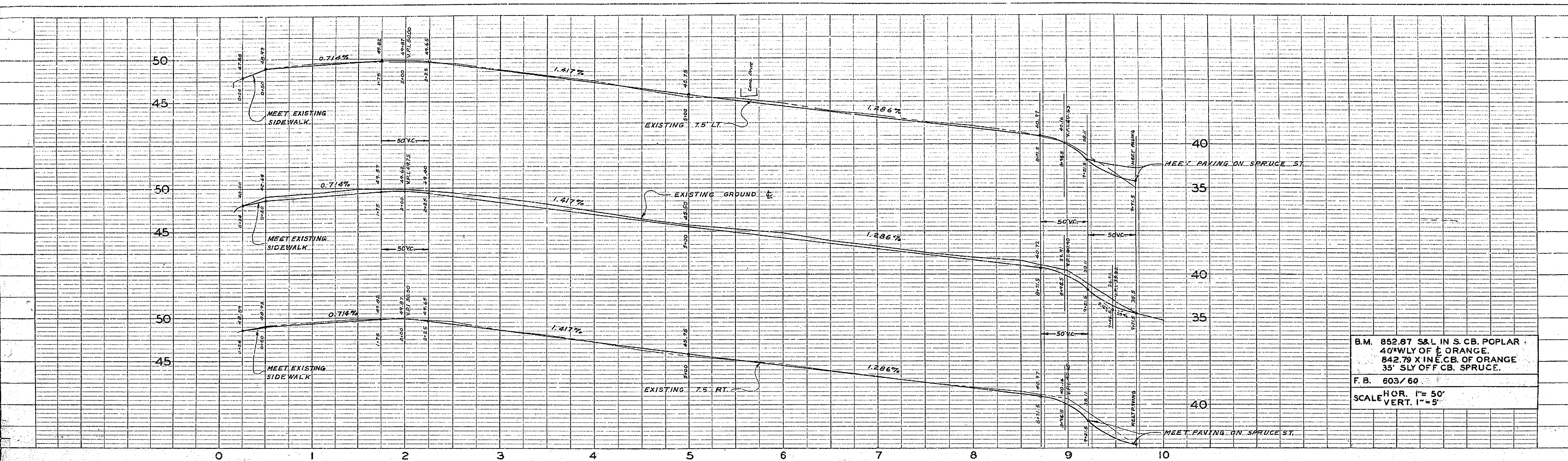


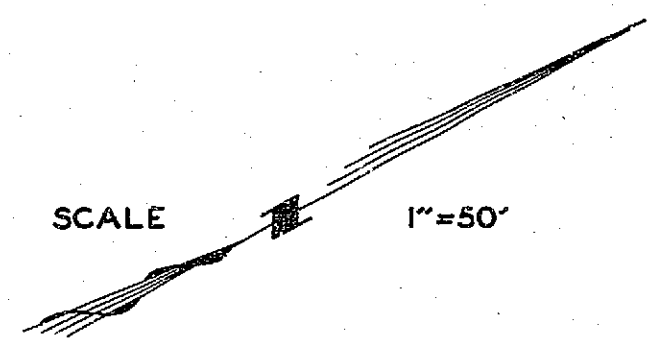
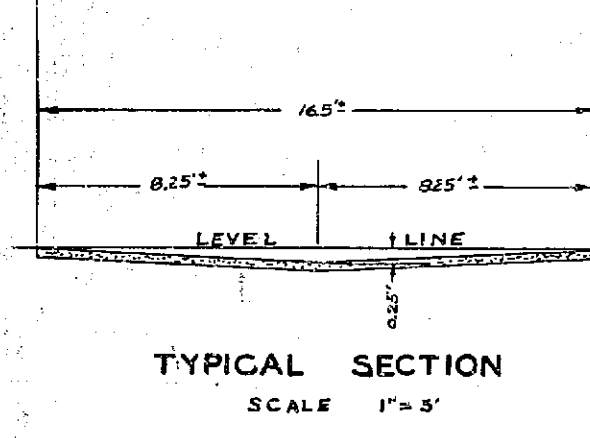
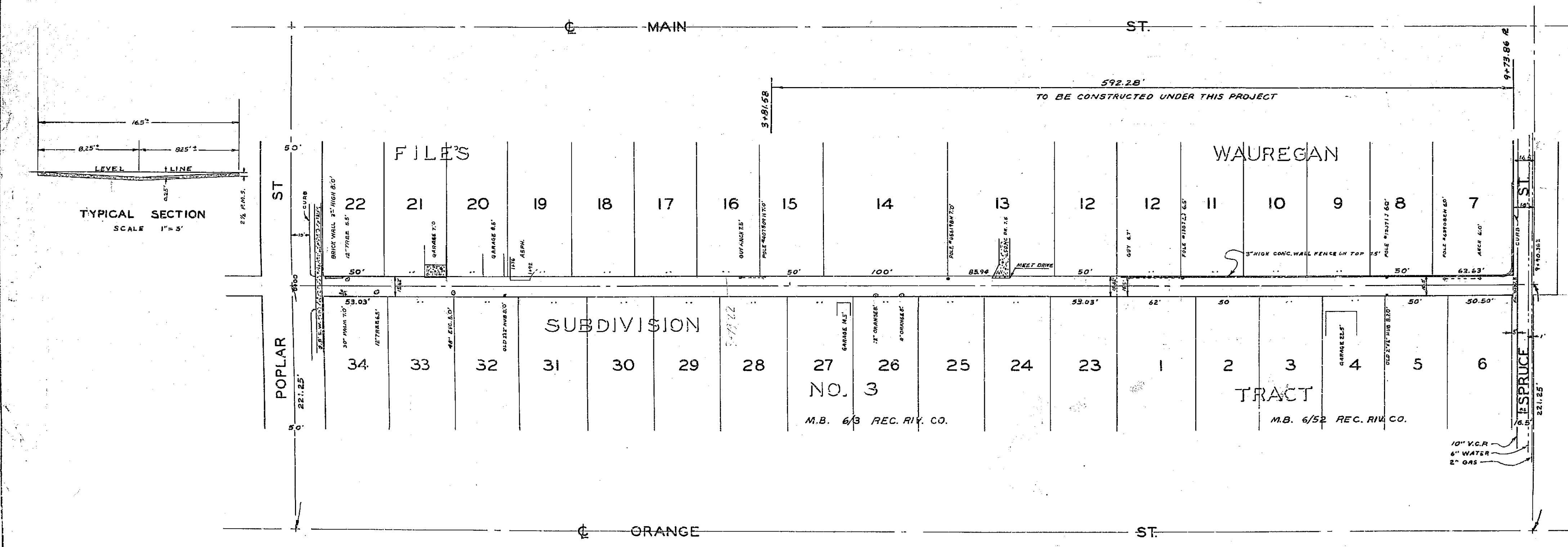
PLATE 1 - PROFILE, ELEVATION & GRADE
 19 HILLS & KERR CO. 1928



B.M. 852.87 S&L IN S. CB. POPLAR
 40' WLY OF C. OF ORANGE.
 642.79 X IN E. CB. OF ORANGE
 35' SLY OFF CB. SPRUCE.

F. B. 603/60

SCALE HOR. 1"=50'
 VERT. 1"=5'



NOTE: 1. ALLEY CENTERLINE SHOWN IS APPROXIMATE IN LOCATION, AND IS PRIMARILY A SURVEY LINE.
 2. TREES TO BE REMOVED AT DISCRETION OF STREET SUPERINTENDENT.

REVISIONS		CITY OF RIVERSIDE CALIFORNIA DEPARTMENT OF PUBLIC WORKS	
MARK	DATE	DESCRIPTION	

DESIGNED BY: W.S.B.	CHECKED BY: J.L.B.	APPROVED BY:	R-154 SHEET / OF 1
DRAWN BY:	RECOMMENDED BY: <i>James E. ...</i>	DIRECTOR OF PUBLIC WORKS	
	ASSISTANT CITY ENGINEER	DATE	

PROFILE	DATE

PLAN	DATE