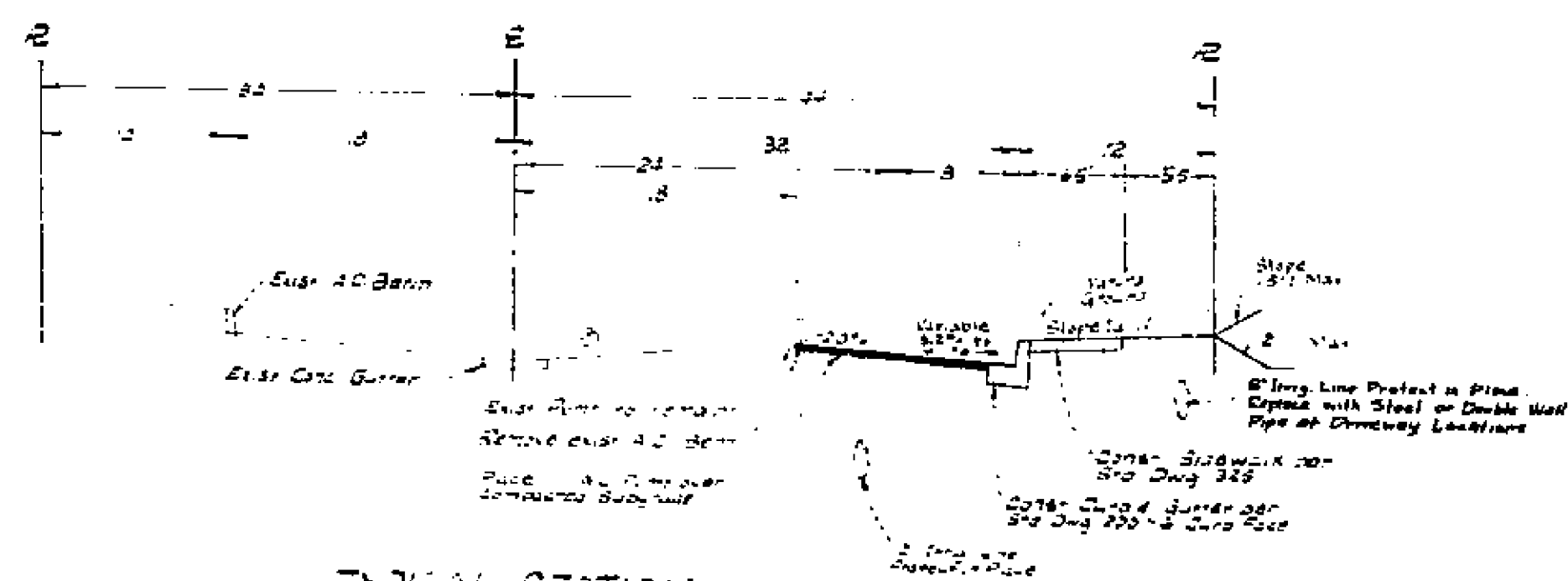
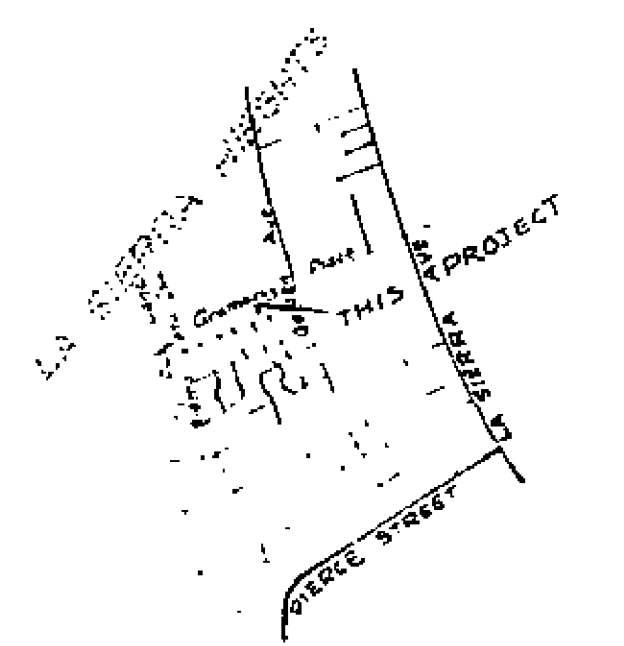
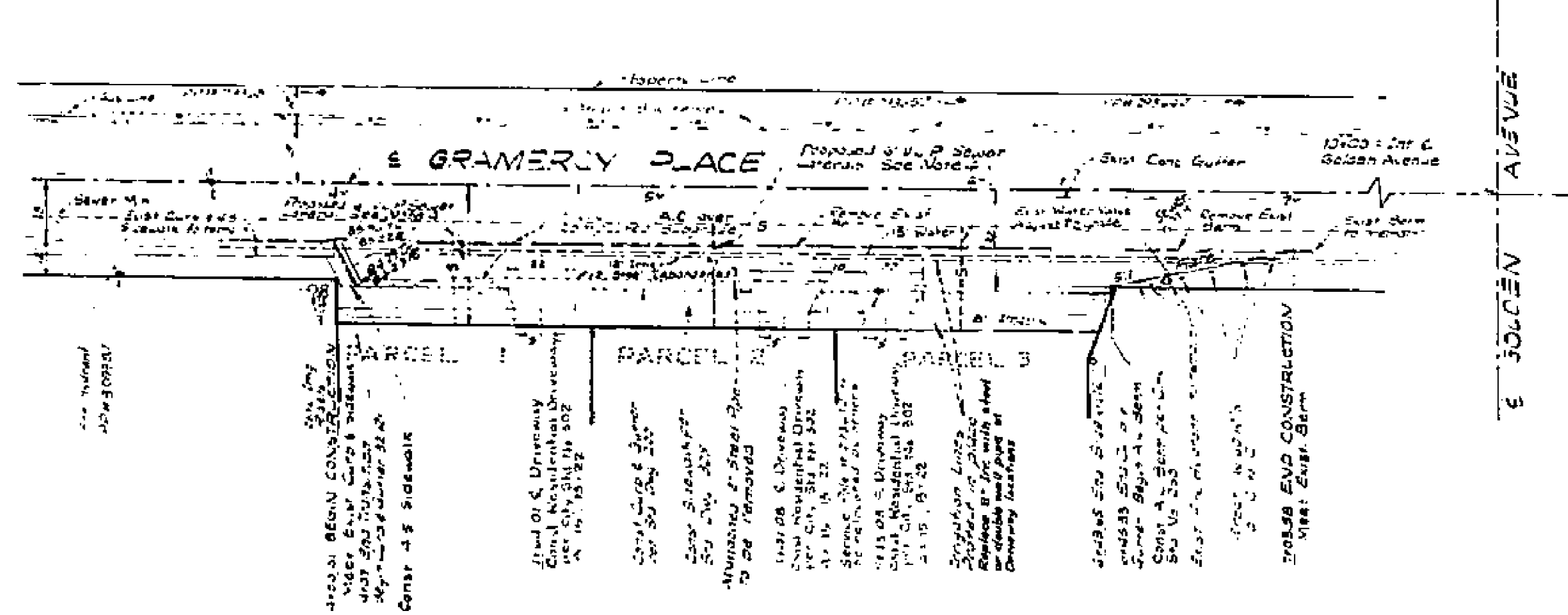
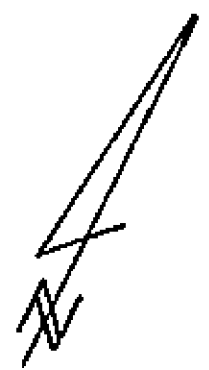


GENERAL NOTES

1. Construction shall be in accordance with the Standard Specifications for Public Works Construction, 1970 Edition, and City of Riverside Standard Drawings.
2. BENCH MARK with a known elevation shall be used to determine curb return stationing. Place the benchmark on the curb 100 ft. Elev. 782.723
3. The contractor shall arrange for a soil test on the subsurface level on a Soil Engineer. Thickness of pavement and type of aggregate base and its compacted by the Soil Engineer and submitted to the City of Riverside for approval prior to construction.
4. V.P. Lines to be shown in field as lines of construction and location of owner.
5. Any damage to Irr. facilities will be repaired by city forces and charged to the Contractor. Notify Water Division three days prior to the beginning of construction. Call 787-7443 or 787-7270.



TYPICAL SECTION
Scale: Vert. 1" = 4'
H. 1" = 10'

APPROVED BY Riverside City Water Dept. Irrigation Division 1-13-72	PREPARED BY BOERNER & WILLIAMS Engineering & Surveying San Bernardino, California 11-29-71 DATE 1-13-72	CITY OF RIVERSIDE, CALIFORNIA DEPARTMENT OF PUBLIC WORKS APPROVED BY PRINCIPAL ENGINEER TRAFFIC DIVISION CHIEF P. W. ENGR.	STREET PLAN AND PROFILE GRAMERCY PLACE South Side From 400' to 450' Westerly of Golden Avenue P.W. 3. MAP NO. 27 HORIZ. SCALE: 1" = 40' VERT. SCALE: 1" = 4'	PROJECT NO. R-1552 SHEET 1 OF 1 FILE NO.
---	---	---	---	--