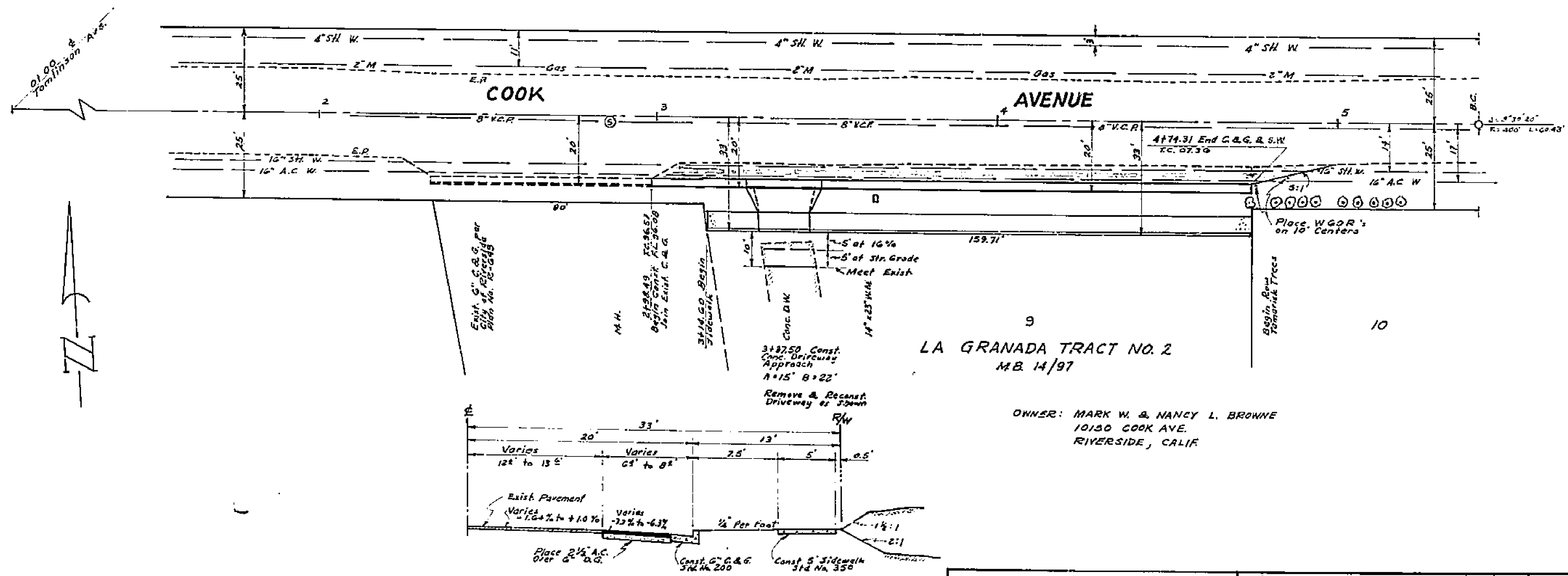


**Notes:**

1. It shall be the responsibility of the contractor to clear the right of way in accordance with the provisions of law as it affects each utility, including irrigation lines and appurtenances, and at no cost to the City.
2. Construction shall be in accordance with the Standard Specifications for Public Works Construction, 1970 Edition and City of Riverside Standard Drawings.
3. Prime coat, seal coat, and paint binder are required.
4. Trim edge of existing pavement, where new paving joins existing pavement, to a clean, straight line. Construct match-up paving as shown and overlay paving as directed in the field to produce a smooth crown section.
5. Driveway approach to be constructed per City of Riverside Std No. 302.
6. Bench Mark No. F3A ELEV 749.49' Brass disc stamped (F3-A) capped at intersection of Walls Ave. & Tyler St. F.B. 735/12.
7. The quantity estimate shown hereon is for information only and the City assumes no responsibility for its accuracy.



**Estimate of Quantities**

1. Curb and Gutter	176 L.F.
2. Concrete Driveway Approach	1 Ea.
3. 5' Concrete Sidewalk	800 SF
4. A.C. Paving	925 SF
5. D.G. Base	925 SF
6. W.G.O.R.	3 Ea.
7. P.C.C. Driveway	150 SF

TYPICAL SECTION  
COOK AVENUE

**ERNEST PINTOR**  
LAND SURVEYOR  
4255 MAIN ST.  
RIVERSIDE, CALIFORNIA  
FEBRUARY 15, 1972  
R.C.E. 20315

CITY OF RIVERSIDE, CALIFORNIA  
DEPARTMENT OF PUBLIC WORKS

STREET PLAN & PROFILE  
COOK AVENUE  
BETWEEN  
TOMLINSON AVE. & BOLTON AVE.  
Bldg. Permit At 10150 COOK AVE.

PROJECT NO.  
**R-1558**  
SHEET 1 OF 1  
FILE NO.

APPROVED BY	BY	DATE	APPROVED BY	DATE
MARK	REVISIONS	APPR. DATE	DESIGNED BY	DRAWN BY

OFFICE ENGINEER	
PARK DEPARTMENT	
TRAFFIC DIVISION	
ASSISTANT CITY ENG.	

DIRECTOR OF PUBLIC WORKS	
DATE	2-6-72
HORIZ. SCALE	1" = 20'
VERT. SCALE	1" = 4'