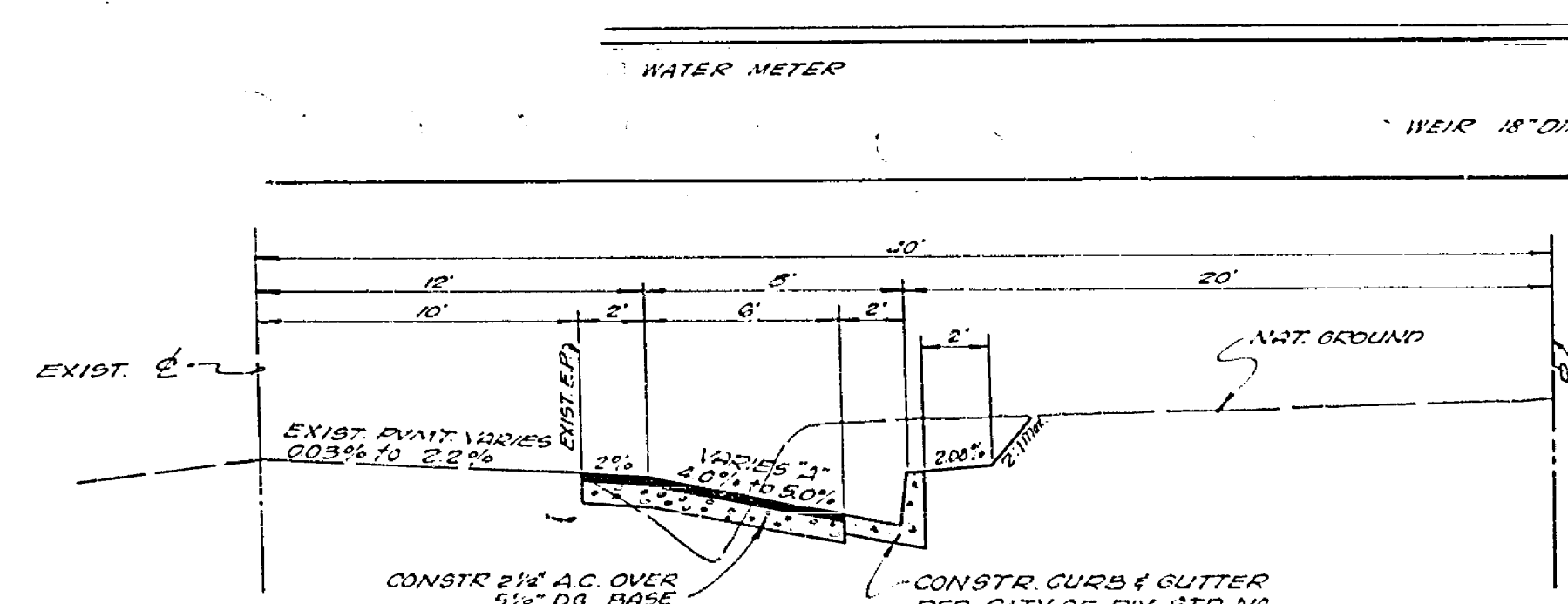


**GENERAL NOTES:**

- (1) It shall be the responsibility of the contractor to clear the right of way in accordance with the provisions of law as it affects each utility, including irrigation lines and appurtenances, and at no cost to the City.
- (2) Construction shall be in accordance with the City of Riverside, Department of Public Works, Standard Drawings and 1970 Edition Specs. for Public Works Construction.
- (3) Prime coat, Seal coat, and Paint binder are required.
- (4) Trim edge of existing pavement where new pavement joins existing pavement to a smooth straight line. Construct match up paving as shown and overlay paving as directed in the field to produce a smooth section.
- (5) The developer shall arrange for a Soils Test at the sub-grade level by a Soils Engineer. Thickness of pavement and type of aggregate base shall be determined by the Soils Engineer and submitted to the City of Riverside for approval prior to construction.

**Note:**  
All underground utilities or structures reported by the owner or others and those shown on the records examined are indicated with their approximate location and extent. The owner by accepting these plans or proceeding with improvements pursuant thereto agrees to assume liability and to hold undersigned harmless for any damages resulting from the existence of underground utilities or structures not reported to the undersigned; not indicated on the public records examined; located at variance with that reported or shown on records examined.



**TYPICAL SECTION**  
NO SCALE

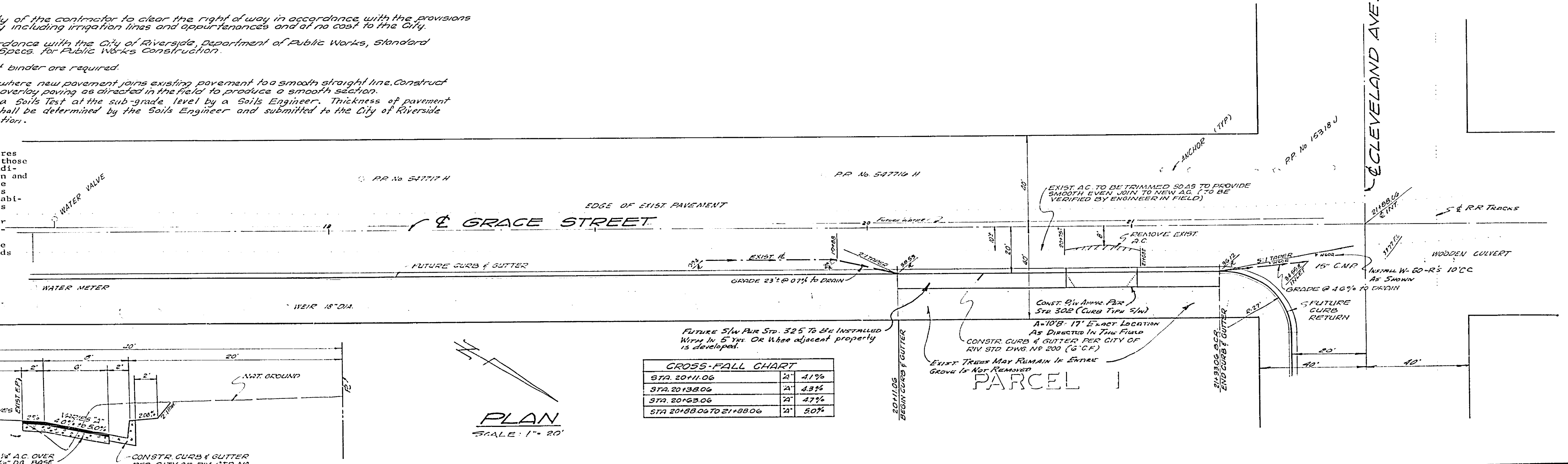
B.M. CITY OF RIV. #80/24  
60 P NAIL IN P POLE #1851J  
@ INTERSECTION OF GRACE STREET  
& VICTORIA AVE. ELEV. 909.464  
T.B.M. (This Proj only)  
FD 82 SPIKE E SIDE RP #18318J  
S.W. COR. CORNER ST. & CLEVELAND  
AVE. ELEV. 926.44

**J. F. DAVIDSON ASSOCIATES**  
CIVIL ENGINEERS - SURVEYORS - PLANNERS  
RIVERSIDE, CALIFORNIA  
APPROVED BY: *Robert P. Bupp* DATE 5-12-72  
R.E. No. 13,629

**CROSS-FALL CHART**

STA. 20+11.06	2'	4.1%
STA. 20+13.06	1'	4.3%
STA. 20+15.06	2'	4.7%
STA. 20+18.06 TO 21+88.06	2'	5.0%

**PLAN**  
SCALE: 1" = 20'



DESIGNED BY: <i>DE</i>	DRAWN BY: <i>M.S.</i>	CHECKED BY: <i>DE</i>
REVISIONS	APPR. DATE	

**CITY OF RIVERSIDE, CALIFORNIA**  
DEPARTMENT OF PUBLIC WORKS  
APPROVED BY: *[Signature]* DATE 4-17-72  
OFFICE ENGINEER  
PARK DEPARTMENT  
TRAFFIC DIVISION  
ASSISTANT CITY ENGINEER

**STREET PLAN & PROFILE**  
**GRACE STREET**  
E LY SIDE - 200' S LY CLEVELAND AVE. PM 72  
HORIZ. SCALE: 1" = 20' VERT. SCALE: 1" = 4'

PROJECT NO. **R-1566**  
SHEET 1 OF 1  
FILE NO. 4423