

B.M. ELEV 925.38 S & L IN N. CURB
LINDEN & OTTAWA.

F.B. 614-14

SCALES: HOR. 1" = 50'
VERT. 1" = 5'

- ① iii. Driveway Approach per City of Riverside Std. 302 Type PL-I for 3440 Dwight Ave @ STA. 3+88.00
A = 18', B = 25'
 - ② For 3430 Dwight Ave @ STA. 4+61.60
A = 16', B = 23'
 - ③ Curb & Gutter per City of Riverside Std. 200, Type 1 6" CF
 - ④ P.L. sidewalk per City of Riverside Std. 325, Type 1 555 SF
 - ⑤ Cold Plan Var. Thickness AC Class C2 - AR-4000, 2" min 1320 SF
- work defined by revision No. 4 on this sheet designed under the direction of Mahid Behnawa
- For NB&H Engineering Inc.
28491 Rancho California Road, suite 105
Temecula, CA - 92590

- ① CONSTRUCT 23' WIDE DRIVEWAY PER CITY STD. 302 1 EA
 - ② APPROACH A = 23' B = 25'
 - ③ CONSTRUCT CURB AND GUTTER PER CITY STD. 200 50 LF
 - ④ TYPE 1 6" CF
 - ⑤ CONSTRUCT P/L SIDEWALK PER CITY STD. 325 300 SF
 - ⑥ CONSTRUCT 4" AC C2-AR-4000 OVER 6" CAB 670 SF
- WORK DEFINED UNDER REVISION NO. 4 ON THIS SHEET PREPARED UNDER THE DIRECTION OF JOHNNY GAYMAN @ COLLINS & ASSOCIATES ENGINEERING INC.
6840 INDIANA AVE SUITE 230 RIVERSIDE CA 92506 PH: (951) 275-0966
- Johnny Gayman 3/22/07
JOHNNY GAYMAN DATE

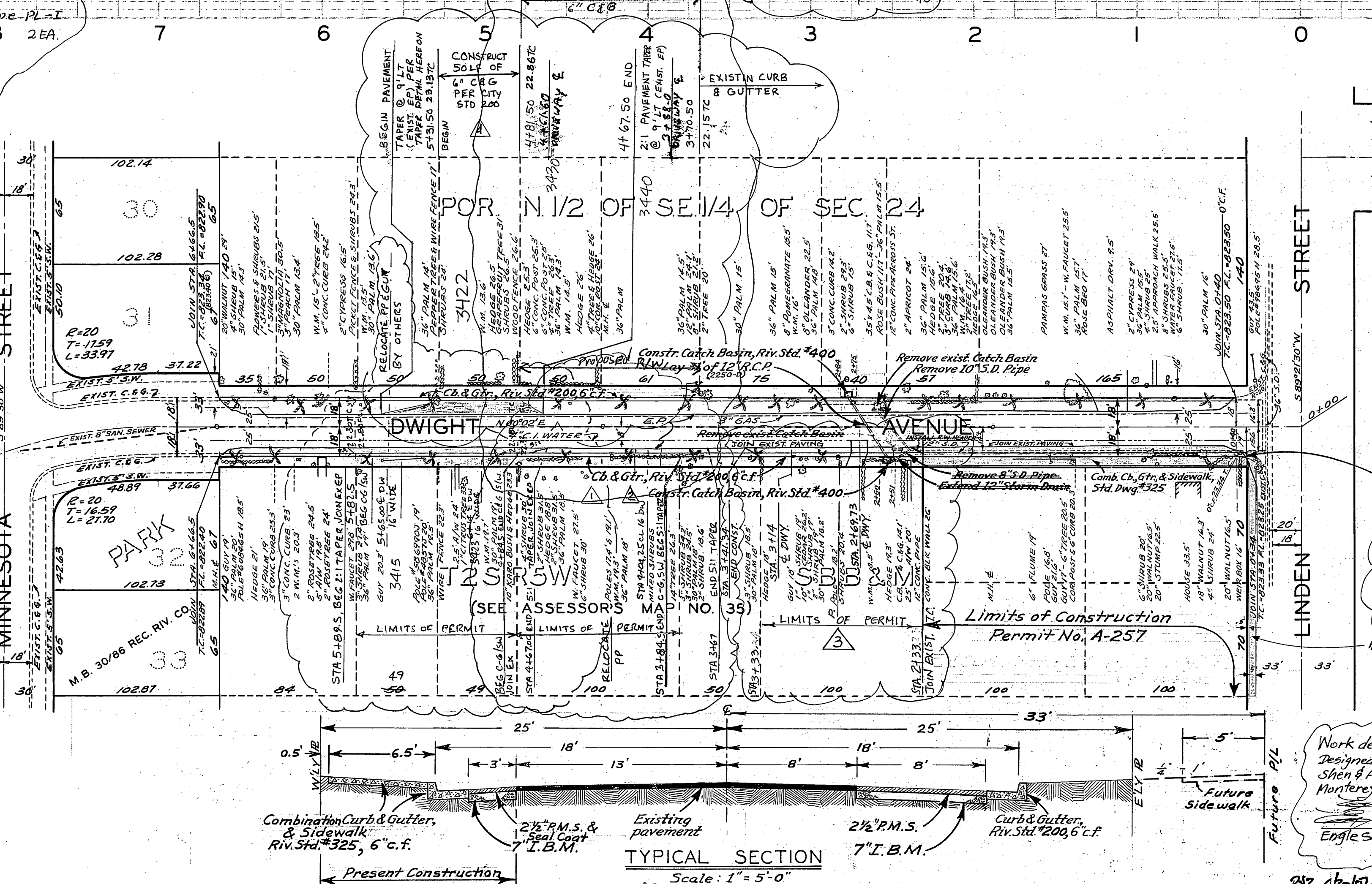
WORK DEFINED BY REVISION NO. 4 ON THIS SHEET DESIGNED UNDER THE DIRECTION OF RICHARD KLINGE FOR RICHARD W. KLINGE ENGINEERING 13729 RAMSBELL DR. MONTEREY PARK, CALIFORNIA 92553 PHONE NO. 909 462-8417

Richard Klinge 6/17/03
RCE # 30574 DATE
EXP 3/31/04

1. DRIVEWAY APPROACH AS PER CITY OF RIVERSIDE STD 302, STATION AS INDICATED A=16' B=23'

2. CURB AND GUTTER PER CITY OF RIVERSIDE STD 200, TYPE 1, 6" C.F.

3. SIDEWALK PER CITY OF RIVERSIDE STD 325, CURBLINE SIDEWALK



SCALE: 1" = 50'

NOTE: 1- Trees to be removed by the City.
2- Utilities to be removed or relocated by the utility involved.
3- Driveway approaches to be rebuilt at the expense of the property owner affected.
4- Catch basins and Storm Drain Pipes to be removed and relocated by the City.
5- Contractor to remove all other obstructions above or below ground which will interfere with construction.
6- City will join edge of existing paving to lip of new gutter.

1. DRIVEWAY Approach Sta. 3+14 A=16', B=23' Sta. 2+67.3 A=10', B=17'

2. CURB & GUTTER per City of Riverside Std. 200, Type 1, 6" C.F.

3. CURBLINE SIDEWALK per City of Riverside Std. 325

4. Cold Plan Var. Thickness A.C. Class C2-AR-4000, 2" Min. 1275 SF

5. Remove Exist. A.C. Pavement and Reconstruct 4" A.C. Pavement, C2-AR-4000 ON 6" C.A.B. 606 SF

Work defined by Revision No. 4 on this sheet designed under the direction of Engle Shen for Engle Shen & Associates, Inc. 1111 Corporate Center Dr. Monterey Park, Ca. 91754, Tel: 323-266-0866

Engle Shen 11/16

DATE

MARK	DATE	DESCRIPTION
1	11-19-57	Grade change, both sides, and
2	12-9-57	Location of Sidewalks 216
3	10-30-59	Const. shown for Permit #A-257
4	6-15-03	ADDED C&G, STA 4+84.5 TO 5+81.5
5	2-22-04	ADDED C&G, STA 3+49.5 TO 4+84.5
6	2-05-07	REVISION OF B
7	10-14-06	ADDED STATIONS OF PROPOSED DRIVEWAY PLAN & PROFILE, ADDED C&G, SIDEWALK & PAVING STATION STA. 2+33 TO STA. 3+33

DESIGNED BY W.D.G. CHECKED BY J.L.B.
BY C.N. H.Ball

FORWARDED BY *Johnnie Gayman* ASSISTANT CITY ENGINEER

CITY OF RIVERSIDE CALIFORNIA
DEPARTMENT OF PUBLIC WORKS

DWIGHT AVENUE
CURB AND GUTTER
BETWEEN
MINNESOTA ST. & LINDEN ST.

R-157

INDEXED 1957