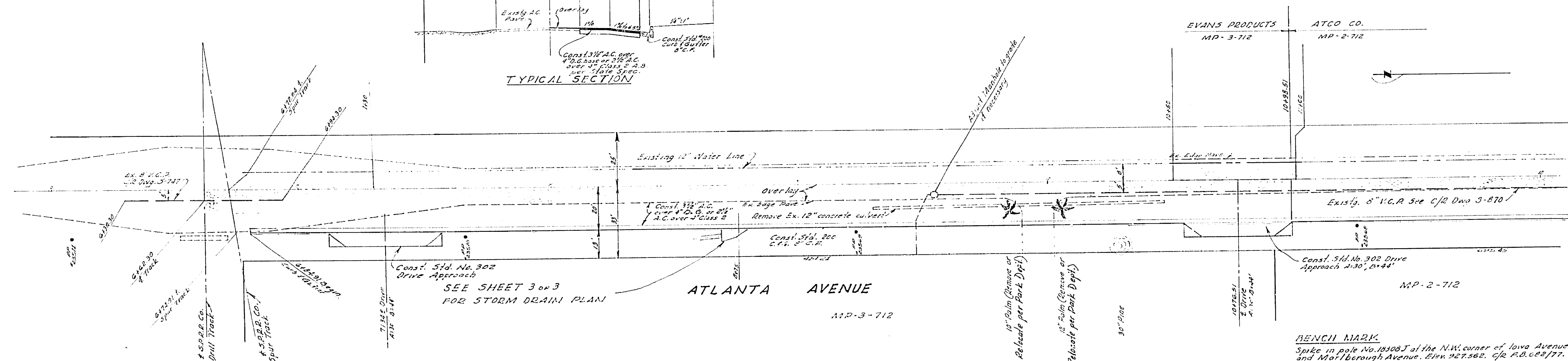
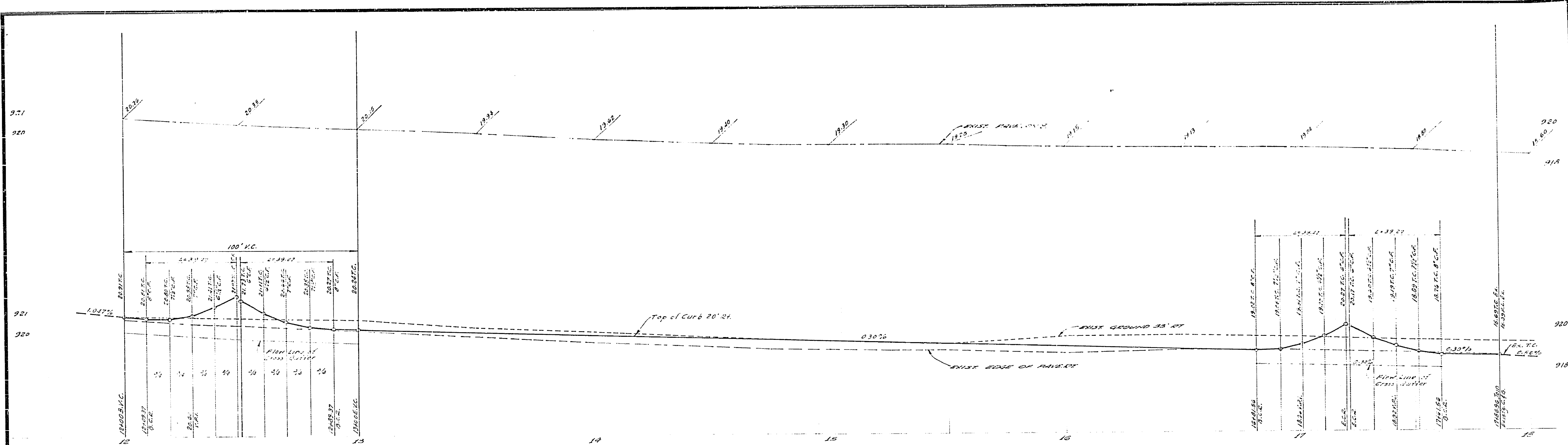


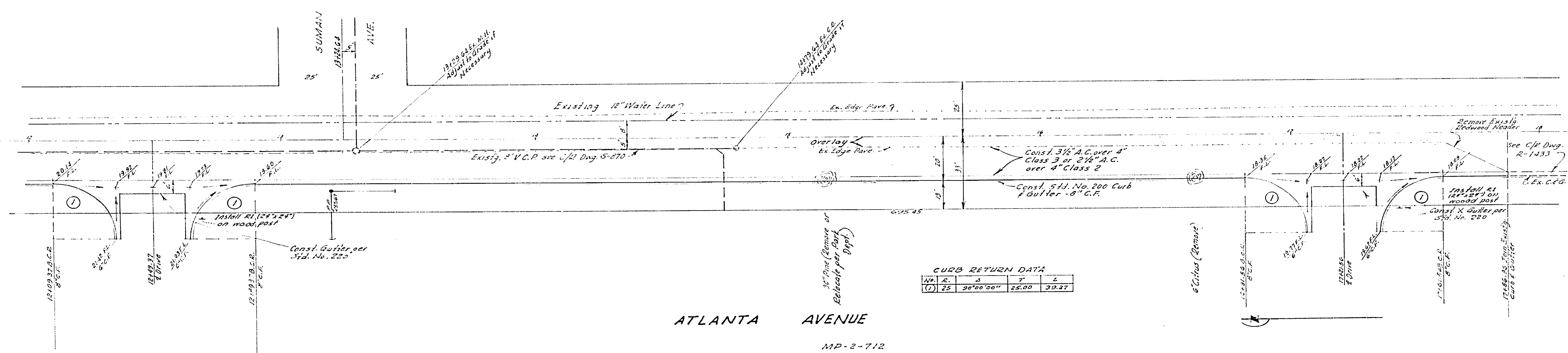
- 10 GENERAL NOTES**
1. Construction shall be in accordance with the Standard Specifications for Public Works Construction 1970 Edition, and City of Riverside Standard Drawings.
 2. All flagged elevations shall be staked in the field by the Engineer.
 3. Driveway locations may be revised in the field.
 4. The amount of asphalt overlay on existing pavement has been estimated to the Engineer to be approximately 45 tons.



ALBERT A. WEBB ASSOCIATES CIVIL ENGINEERS RIVERSIDE, CALIFORNIA APPROVED BY: <i>[Signature]</i> DATE: 3/1/72 R.E. No. 2276 W.S. 72-62 FOR Verisight P.R. 1015	CITY OF RIVERSIDE, CALIFORNIA PUBLIC WORKS DEPARTMENT APPROVED BY: <i>[Signature]</i> DATE: <i>[Blank]</i> TRAFFIC DIVISION CHIEF PUBLIC WORKS ENGINEER	STREET PLAN & PROFILE ATLANTA AVENUE MP-2-712 MP-3-712 STA. 6+77.37 TO STA. 17+85.36 NORTH OF SPRUCE	ACCOUNT No. DRAWING NUMBER R-1574 SHEET 1 OF 3 72-62-A
		SCALE: Horiz. 1"=20' Vert. 1"=2'	



SEE SHEET 1 OF 3

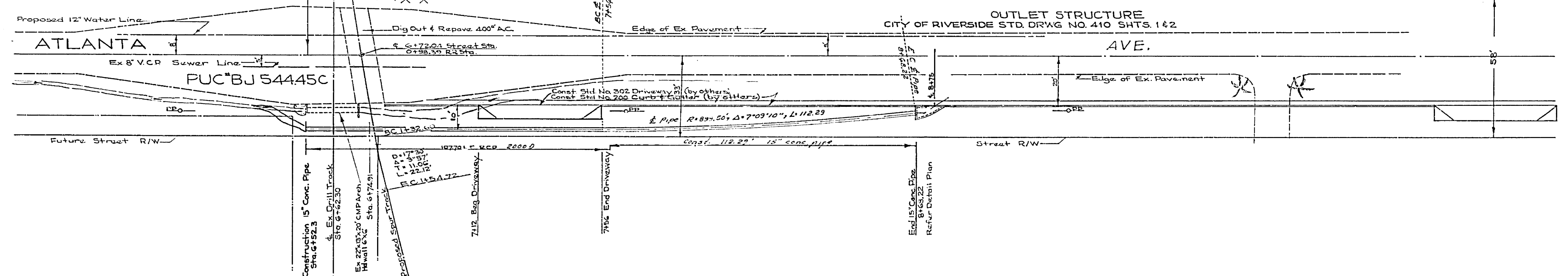
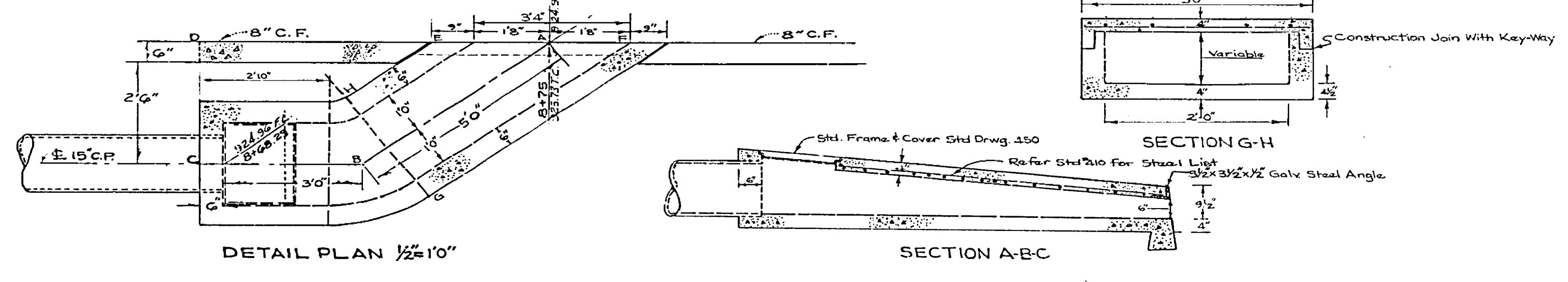
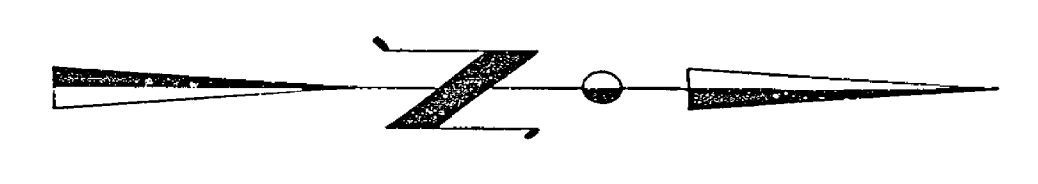
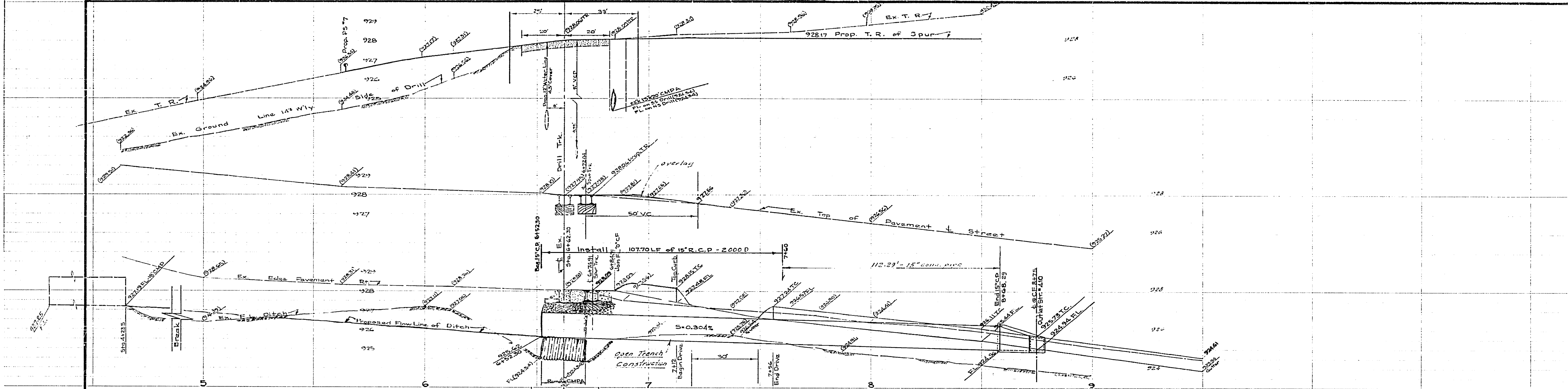


ATLANTA AVENUE

MP-2-712

BENCH MARK
 3646' in mark No. 15108 J of the N.W. corner of Iowa Avenue
 and Hart/Borough Avenue. Elev. 927.562, c/c P.O. 682/71.

ALBERT A. WEBB ASSOCIATES CIVIL ENGINEERS RIVERSIDE, CALIFORNIA APPROVED BY: <i>[Signature]</i> DATE: 3/20/72 R.E. No. 2276	CITY OF RIVERSIDE, CALIFORNIA PUBLIC WORKS DEPARTMENT		STREET PLAN & PROFILE ATLANTA AVENUE MP-2-712 MP-3-712 STA. 6177.37 TO STA. 17186.36 NORTH OF SPRUCE		ACCOUNT No. DRAWING NUMBER R-1574
	APPROVED BY: <i>[Signature]</i> DATE: 3/20/72 W.O. 72-62 FOR: Kerle Mohr F.B. 1015	DESIGNED BY REC DRAWN BY REC CHECKED BY RB	REVISIONS APPR. DATE	APPROVED BY: <i>[Signature]</i> TRAFFIC DIVISION CHIEF PUB. WORKS ENGR.	APPROVED BY: <i>[Signature]</i> DIRECTOR OF PUBLIC WORKS DATE:



Bench Mark:
Splice in Pole No. 18308 J @ The N.W. Corner of Iowa Avenue
And Marlborough Avenue Elev. 927.562 $\frac{1}{4}$ FB 682-77

SOUTHERN PACIFIC TRANSPORTATION COMPANY 610 So. MAIN ST. LOS ANGELES CAL. <i>Rudolf Widmann</i> RUDOLF WIDMANN R.C.E. 6246 DATE 4-21-72	CITY OF RIVERSIDE, CALIFORNIA DEPARTMENT OF PUBLIC WORKS		SPUR TRACK AND DRAINAGE PLAN AND PROFILE ATLANTA AVE. STA 6+52.50 TO STA 8+75	PROJECT No. R-1574
	DESIGNED BY DRAWN BY	APPROVED BY DATE	APPROVED BY DATE	SHEET <u>3</u> OF <u>3</u> FILE N° 72-62-A