

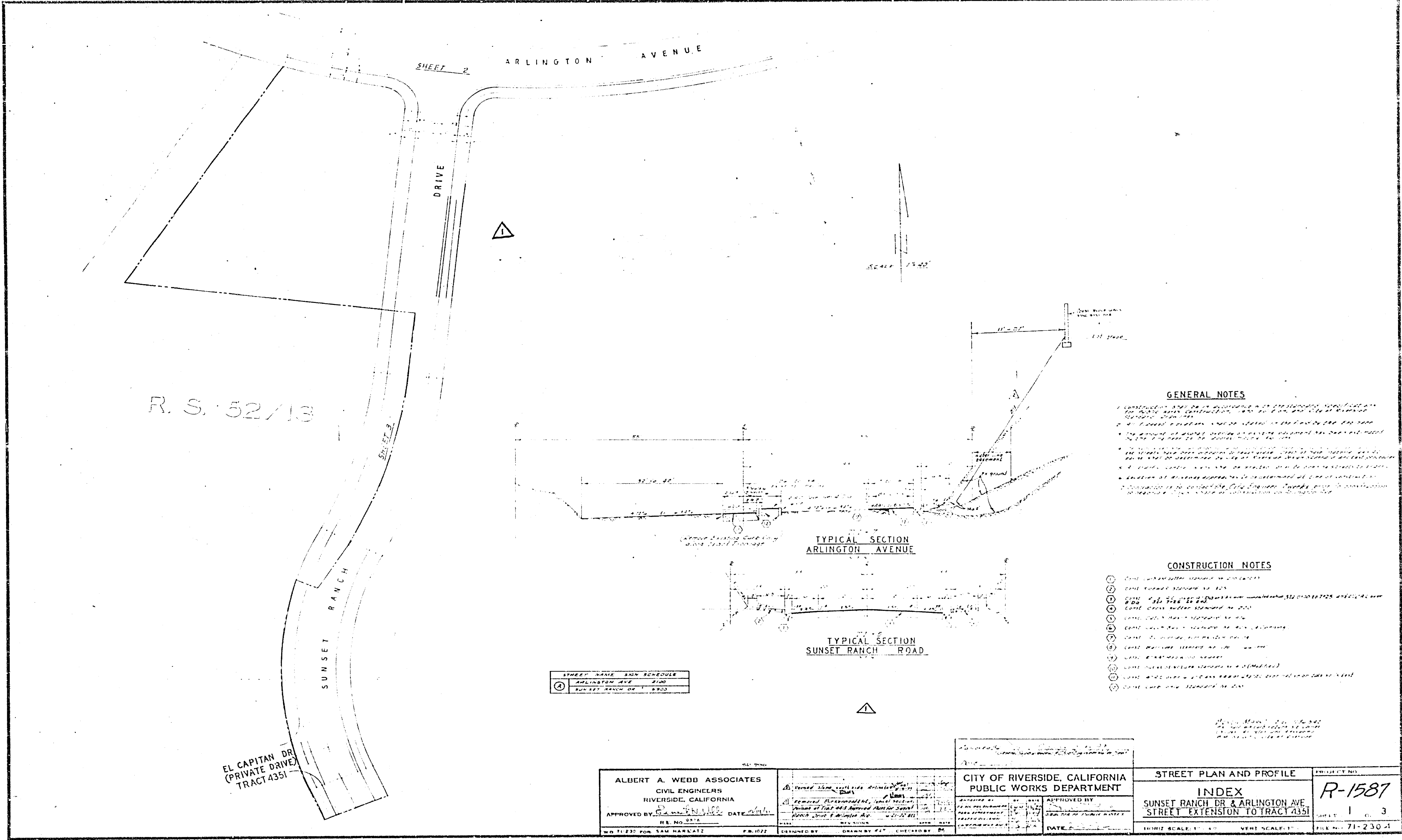
ALBERT A. WEBB ASSOCIATES  
 CIVIL ENGINEERS  
 RIVERSIDE, CALIFORNIA  
 APPROVED BY: [Signature] DATE: [Date]  
 RE: [Project Name]

|       |         |                  |
|-------|---------|------------------|
| NO. 1 | DATE    | DESCRIPTION      |
| 1     | 10/1/52 | PRELIMINARY PLAN |
| 2     | 11/1/52 | FINAL PLAN       |
| 3     | 12/1/52 | CONSTRUCTION     |

CITY OF RIVERSIDE, CALIFORNIA  
 PUBLIC WORKS DEPARTMENT  
 APPROVED BY: [Signature] DATE: [Date]  
 DIRECTOR OF PUBLIC WORKS

STREET PLAN AND PROFILE  
 SUNSET RANCH DRIVE  
 STREET EXTENSION TO TRACT 4351

ACCOUNT NO. 71-230  
 DRAWING NUMBER  
**R-1587**  
 SHEET 3 OF 4  
 71-230-A



R. S. 52/13

SHEET 2

ARLINGTON AVENUE

DRIVE

SUNSET RANCH

EL CAPITAN DR  
(PRIVATE DRIVE)  
TRACT 4351

TYPICAL SECTION  
ARLINGTON AVENUE

TYPICAL SECTION  
SUNSET RANCH ROAD

| STREET NAME     | RAIN SCHEDULE |
|-----------------|---------------|
| ARLINGTON AVE   | 2" 100        |
| SUNSET RANCH DR | 2" 100        |

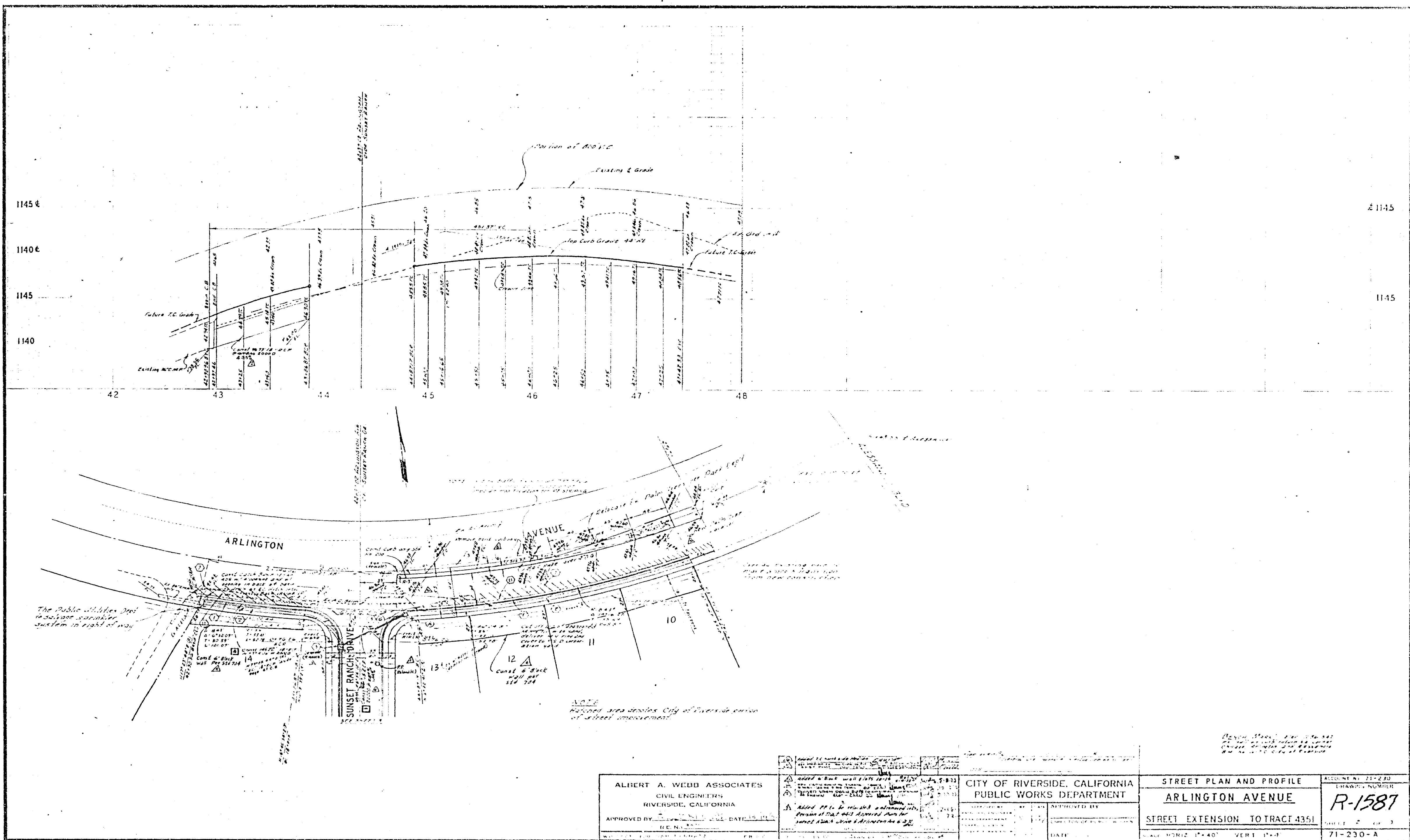
**GENERAL NOTES**

1. ALL UTILITIES TO BE PLACED IN ACCORDANCE WITH THE CITY ENGINEER'S SPECIFICATIONS.
2. ALL UTILITIES TO BE PLACED IN ACCORDANCE WITH THE CITY ENGINEER'S SPECIFICATIONS.
3. ALL UTILITIES TO BE PLACED IN ACCORDANCE WITH THE CITY ENGINEER'S SPECIFICATIONS.
4. ALL UTILITIES TO BE PLACED IN ACCORDANCE WITH THE CITY ENGINEER'S SPECIFICATIONS.
5. ALL UTILITIES TO BE PLACED IN ACCORDANCE WITH THE CITY ENGINEER'S SPECIFICATIONS.
6. ALL UTILITIES TO BE PLACED IN ACCORDANCE WITH THE CITY ENGINEER'S SPECIFICATIONS.
7. ALL UTILITIES TO BE PLACED IN ACCORDANCE WITH THE CITY ENGINEER'S SPECIFICATIONS.
8. ALL UTILITIES TO BE PLACED IN ACCORDANCE WITH THE CITY ENGINEER'S SPECIFICATIONS.
9. ALL UTILITIES TO BE PLACED IN ACCORDANCE WITH THE CITY ENGINEER'S SPECIFICATIONS.
10. ALL UTILITIES TO BE PLACED IN ACCORDANCE WITH THE CITY ENGINEER'S SPECIFICATIONS.

**CONSTRUCTION NOTES**

1. ALL UTILITIES TO BE PLACED IN ACCORDANCE WITH THE CITY ENGINEER'S SPECIFICATIONS.
2. ALL UTILITIES TO BE PLACED IN ACCORDANCE WITH THE CITY ENGINEER'S SPECIFICATIONS.
3. ALL UTILITIES TO BE PLACED IN ACCORDANCE WITH THE CITY ENGINEER'S SPECIFICATIONS.
4. ALL UTILITIES TO BE PLACED IN ACCORDANCE WITH THE CITY ENGINEER'S SPECIFICATIONS.
5. ALL UTILITIES TO BE PLACED IN ACCORDANCE WITH THE CITY ENGINEER'S SPECIFICATIONS.
6. ALL UTILITIES TO BE PLACED IN ACCORDANCE WITH THE CITY ENGINEER'S SPECIFICATIONS.
7. ALL UTILITIES TO BE PLACED IN ACCORDANCE WITH THE CITY ENGINEER'S SPECIFICATIONS.
8. ALL UTILITIES TO BE PLACED IN ACCORDANCE WITH THE CITY ENGINEER'S SPECIFICATIONS.
9. ALL UTILITIES TO BE PLACED IN ACCORDANCE WITH THE CITY ENGINEER'S SPECIFICATIONS.
10. ALL UTILITIES TO BE PLACED IN ACCORDANCE WITH THE CITY ENGINEER'S SPECIFICATIONS.

|   |   |                         |             |
|---|---|-------------------------|-------------|
| ALBERT A. WEBB ASSOCIATES<br>CIVIL ENGINEERS<br>RIVERSIDE, CALIFORNIA<br>APPROVED BY: [Signature] DATE: 11/23/77<br>P.E. NO. 2314 | CITY OF RIVERSIDE, CALIFORNIA<br>PUBLIC WORKS DEPARTMENT<br>APPROVED BY: [Signature] DATE: 11/23/77 | STREET PLAN AND PROFILE | PROJECT NO. |
|   |   | INDEX                   | R-1587      |
| SUNSET RANCH DR & ARLINGTON AVE<br>STREET EXTENSION TO TRACT 4351   |   | SHEET                   | 1 of 3      |
| HORIZ SCALE: 1" = 40' VERT SCALE: 1" = 4'   |   | FILE NO.                | 71-230-1    |



ALBERT A. WEBB ASSOCIATES  
 CIVIL ENGINEERS  
 RIVERSIDE, CALIFORNIA  
 APPROVED BY: \_\_\_\_\_ DATE: \_\_\_\_\_  
 RE: \_\_\_\_\_

REVISIONS:  
 1. \_\_\_\_\_  
 2. \_\_\_\_\_  
 3. \_\_\_\_\_  
 4. \_\_\_\_\_  
 5. \_\_\_\_\_

CITY OF RIVERSIDE, CALIFORNIA  
 PUBLIC WORKS DEPARTMENT  
 REVIEWED BY: \_\_\_\_\_  
 DATE: \_\_\_\_\_

STREET PLAN AND PROFILE  
 ARLINGTON AVENUE  
 STREET EXTENSION TO TRACT 4351  
 SCALE: HORIZ. 1"=40' VERT. 1"=4'

ACCOUNT NO. 71-230  
 DRAWING NUMBER  
**R-1587**  
 SHEET 2 OF 3  
 71-230-A