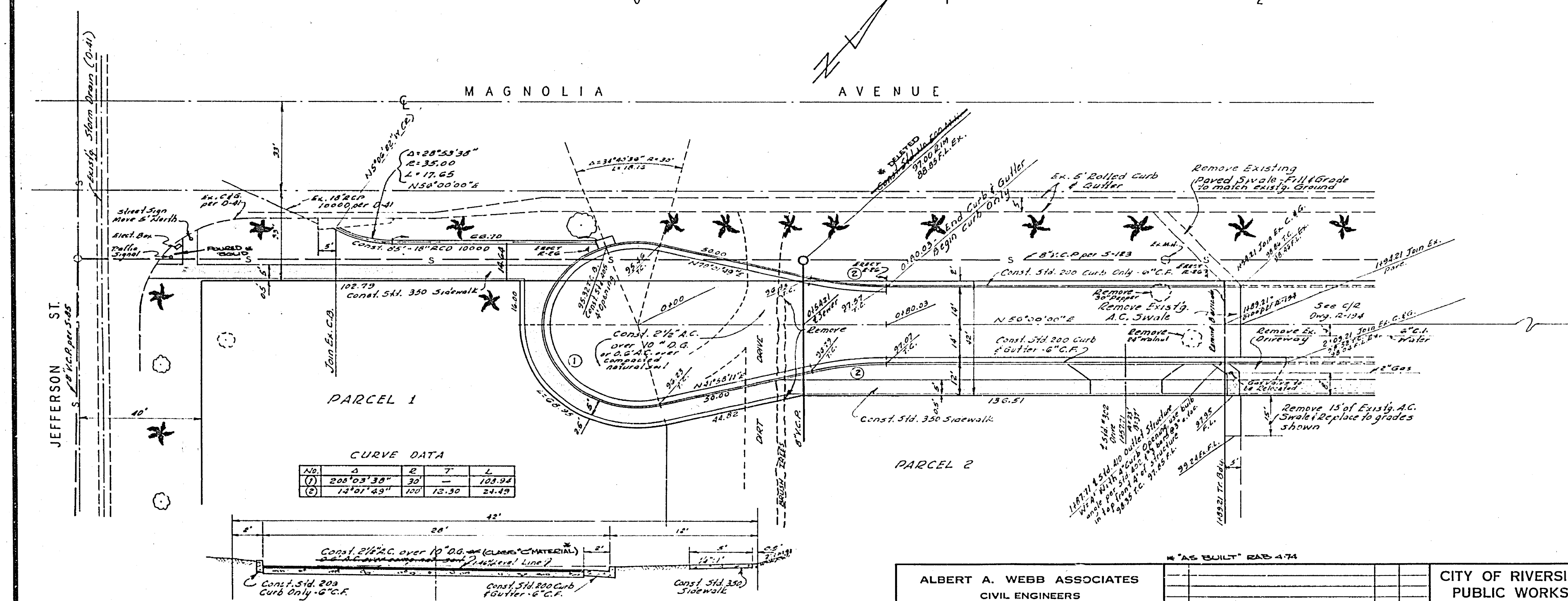


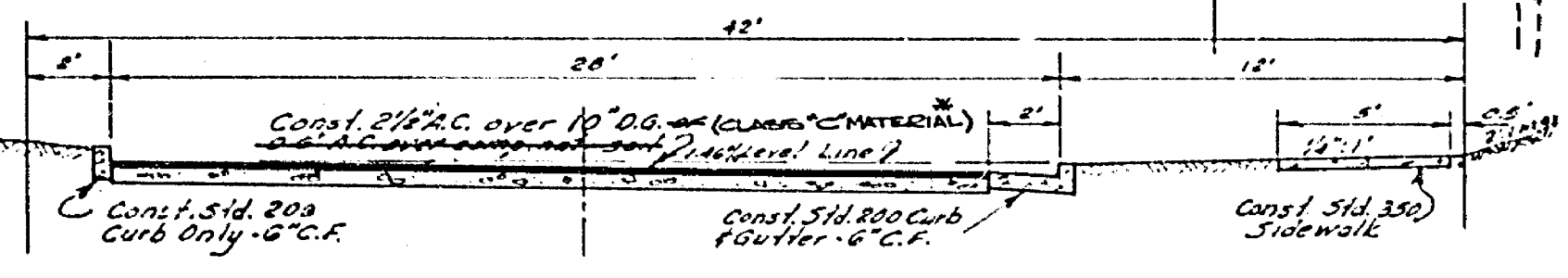
895 L1
 895 E
 895 R1



- GENERAL NOTES**
1. Construction shall be in accordance with the Standard Specifications for Public Works Construction, 1972 edition, and City of Riverside Standard Drawings.
 2. The Subdivider shall arrange for a soil test to be made by a Soils Engineer after the streets have been prepared to rough grade. Depth of base material and A.C. pavement shall be determined by the City of Riverside Design Standards and Test Procedures.
 3. All flagged elevations shall be stated in the field by the Engineer.

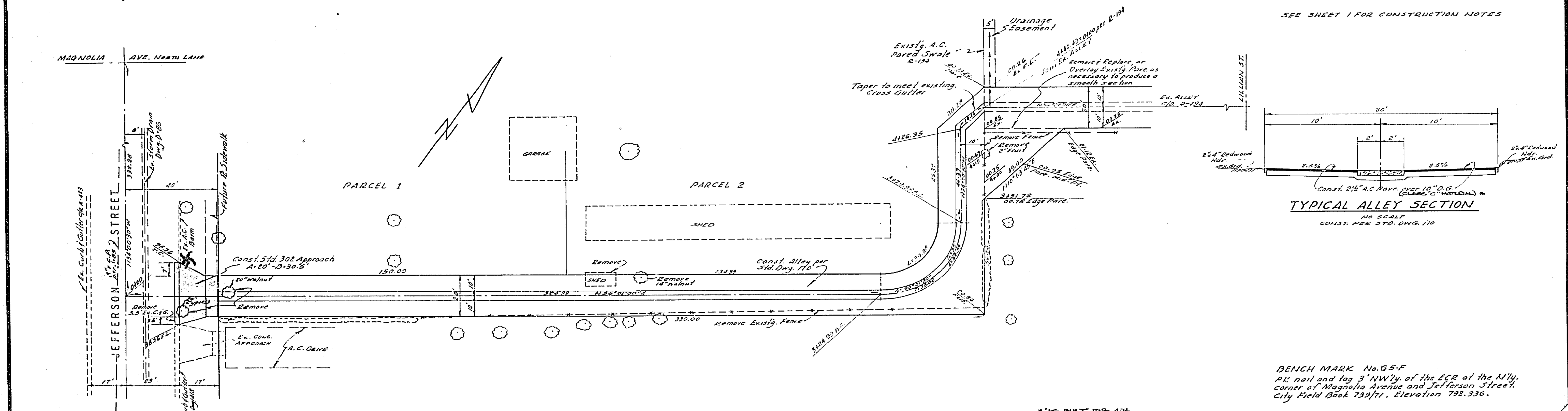
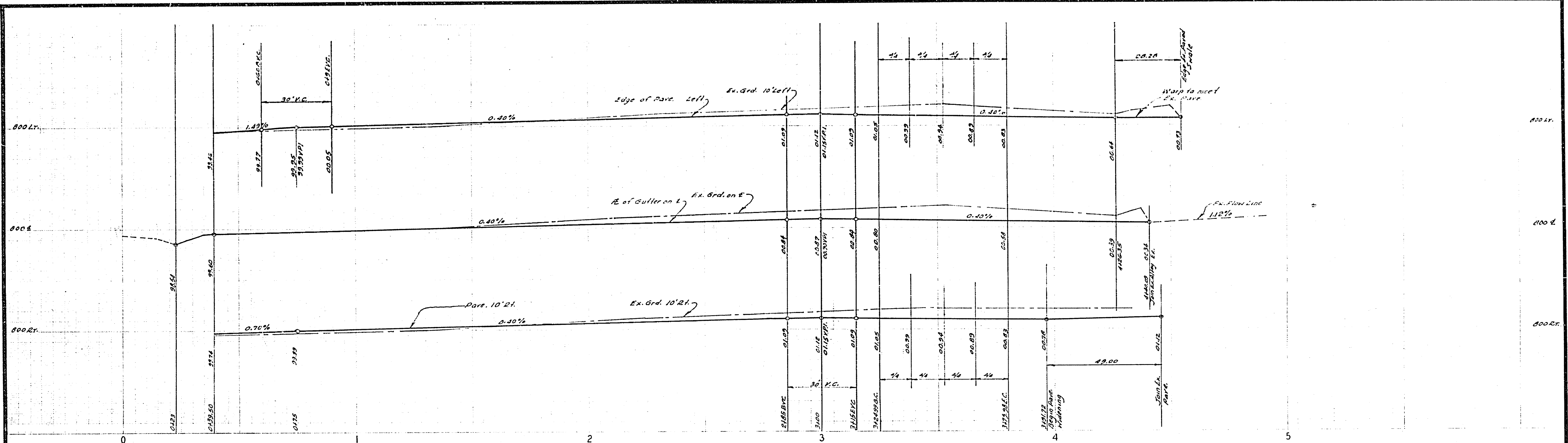
CURVE DATA

No.	Δ	R	T	L
(1)	200° 03' 38"	30	—	108.34
(2)	14° 01' 43"	100	12.50	24.49

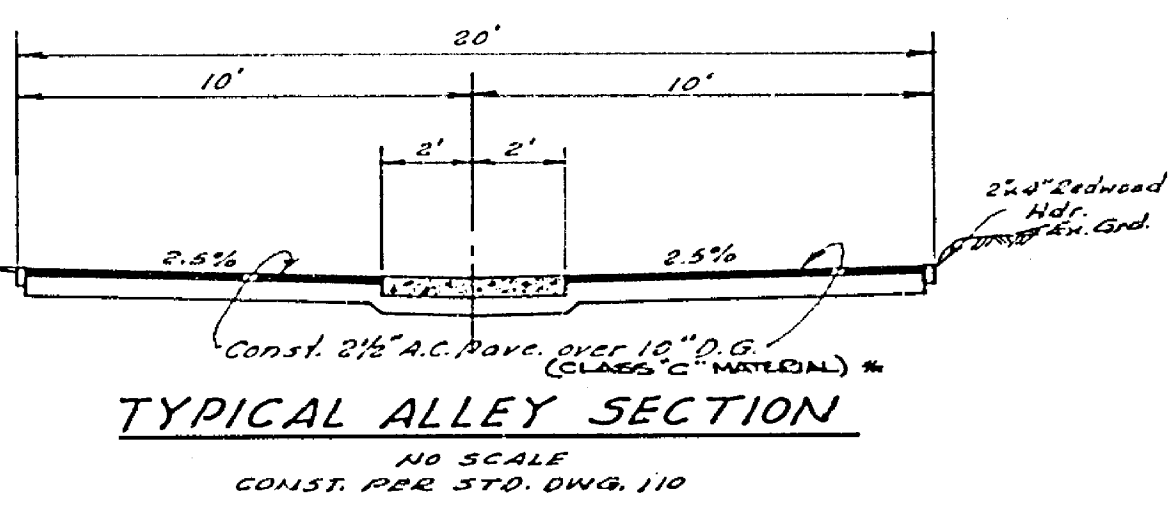


BENCH MARK No. G5-F
 PK nail and tag 3' NWly. of the ECR at the NWly. corner of Magnolia Avenue and Jefferson Street.
 City Field Book 739711 Elevation 792.336.

ALBERT A. WEBB ASSOCIATES CIVIL ENGINEERS RIVERSIDE, CALIFORNIA APPROVED BY: <i>[Signature]</i> DATE: 9/22/73 R.E. No. 2977		CITY OF RIVERSIDE, CALIFORNIA PUBLIC WORKS DEPARTMENT APPROVED BY: <i>[Signature]</i> DATE: <i>[Blank]</i> PRINCIPAL ENGINEER PARK DEPARTMENT TRAFFIC DIVISION CHIEF PAW WELSHUR DATE: <i>[Blank]</i>		INDEXED ACCOUNT NO. DRAWING NUMBER R-1626 SHEET <i>1</i> OF <i>2</i> SCALE: Horiz. 1"=20' Vert. 1"=4' 69-1A1A
--	--	---	--	--



SEE SHEET 1 FOR CONSTRUCTION NOTES



BENCH MARK No. 65-F
 PL nail and tag 3' NW 1/4 of the ECR of the N 1/4
 corner of Magnolia Avenue and Jefferson Street.
 City Field Book 739/71. Elevation 792.336.

ALBERT A. WEBB ASSOCIATES CIVIL ENGINEERS RIVERSIDE, CALIFORNIA APPROVED BY: <i>[Signature]</i> DATE 1/23/73 R.E. No. 2478 W-69-141 FOR: LEB SIGLOCH F.B. 1022	CITY OF RIVERSIDE, CALIFORNIA PUBLIC WORKS DEPARTMENT		PARCEL MAP NO. 43 STREET PLAN AND PROFILE ALLEY NORTHEASTERLY OF JEFFERSON ST.	ACCOUNT No. DRAWING NUMBER R-1626 SHEET 2 OF 2 69-141A
	APPROVED BY: <i>[Signature]</i> DATE 1/23/73 TRAFFIC DIVISION CHIEF P.W. ENGINEER UTVA	BY: <i>[Signature]</i> DATE 1/23/73 DATE: 2-20-73	APPROVED BY: <i>[Signature]</i> DIRECTOR OF PUBLIC WORKS	SCALE: Horiz. 1" = 20' Vert. 1" = 4'
	DESIGNED BY: REC DRAWN BY: REC CHECKED BY: [Signature]		REVISIONS: [Table with 3 columns: MARK, REVISIONS, APP. DATE]	