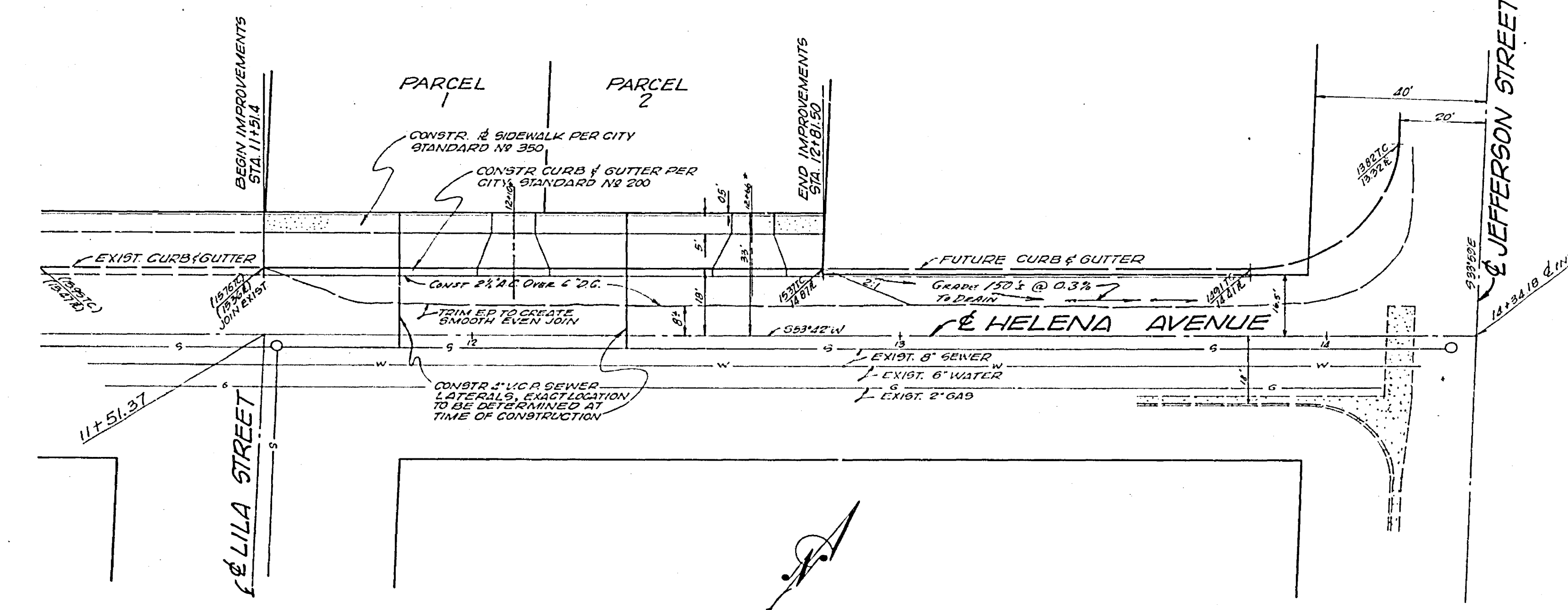
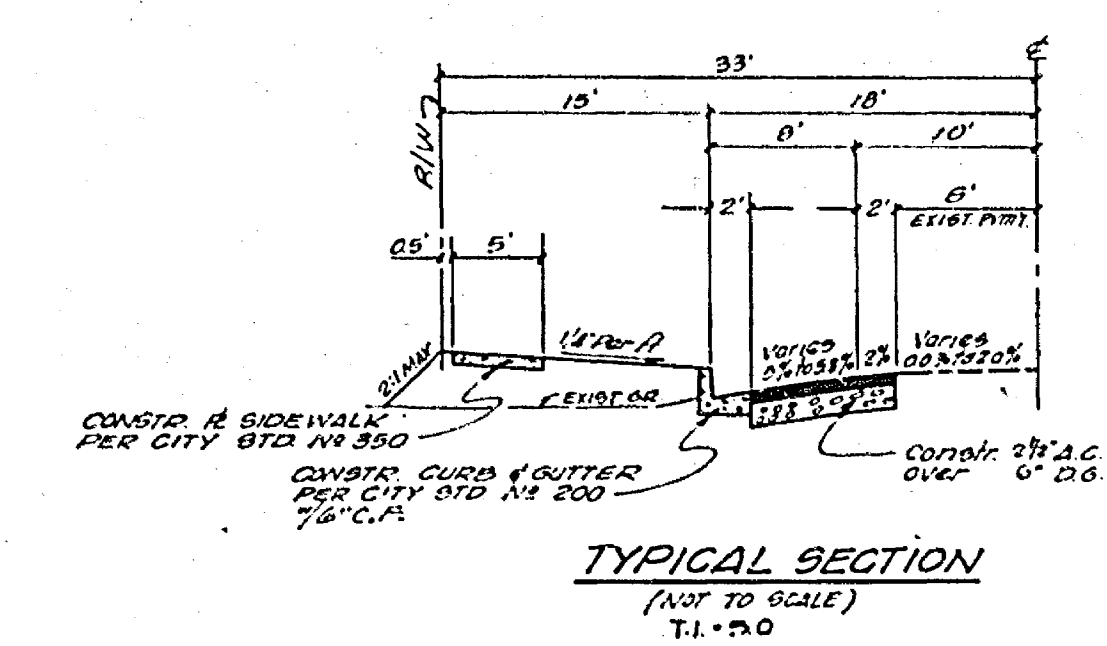


- GENERAL NOTES:**
1. It shall be the responsibility of the contractor to clear the right of way in accordance with the provisions of law as it affects each utility including irrigation lines and appurtenances and at no cost to the City.
 2. Construction shall be in accordance with the City of Riverside, Department of Public Works, Standard Drawings and 1970 Edition Specs. for Public Works Construction.
 3. Prime coat, seal coat, and point binder are required.
 4. Trim edge of existing pavement where new pavement joins existing pavement to a smooth straight line. Construct match-up paving as shown and overlay paving as directed in the field to produce a smooth section. Engineer estimates overlay to be 0 cons.
 5. Construct driveway approaches per Standard 302. Exact size and location to be determined at the time of construction as approved by the Traffic Engineer.



BENCH MARK: G5-F
P.K. Nail and Tag 3' NWly of E.C.R.
@ Nly corner of Magnolia Ave. and
Jefferson St. C.R. FB. 739/71.
Elev. = 792.336

I.B.M.: (This Project Only)
Pd. chiseled "D" 5 1/4" curb of Jefferson
4' Sly of E. Helena produced.
Elev. = 815.23
Pd. chiseled "D" 5 1/4" curb of Helena
at angle point, 406'± Wly of
Jefferson.
Elev. = 816.10

NOTE:
All underground utilities or structures reported by the owner or others and those shown on the records examined are indicated with their approximate location and extent. The owner by accepting these plans or proceeding with improvements pursuant thereto agrees to assume liability and to hold undersigned harmless for any damages resulting from the existence of underground utilities or structures not reported to the undersigned; not indicated on the public records examined; located at variance with that reported or shown on records examined.

J. F. DAVIDSON ASSOCIATES CIVIL ENGINEERS - SURVEYORS - PLANNERS RIVERSIDE, CALIFORNIA APPROVED BY: <i>[Signature]</i> DATE: 8-26-72 R.E. No. 13495 W.D. 3301 FOR: UDDROSSY, PRINC. F.B. 80114	AS BUILT RAB A/73	CITY OF RIVERSIDE, CALIFORNIA DEPARTMENT OF PUBLIC WORKS APPROVED BY: <i>[Signature]</i> DATE: 8-22-72 OFFICE ENGINEER PARK DEPARTMENT TRAFFIC DIVISION TRINITY CITY ENG. DATE: AUGUST 1972	STREET PLAN AND PROFILE HELENA AVENUE 130' TO 280' WEST OF JEFFERSON STREET P.M. 102 HORIZ. SCALE: 1" = 20' VERT. SCALE: 1" = 2' FILE NO. 4444	INDEXED PROJECT NO. R-1628 SHEET 1 OF 1
	DESIGNED BY: D.E.E. DRAWN BY: D.E.E. CHECKED BY: LL	REVISIONS APPR. DATE	APPROVED BY: <i>[Signature]</i> DATE: 8-15-72 DIRECTOR OF PUBLIC WORKS	FILE NO. 4444