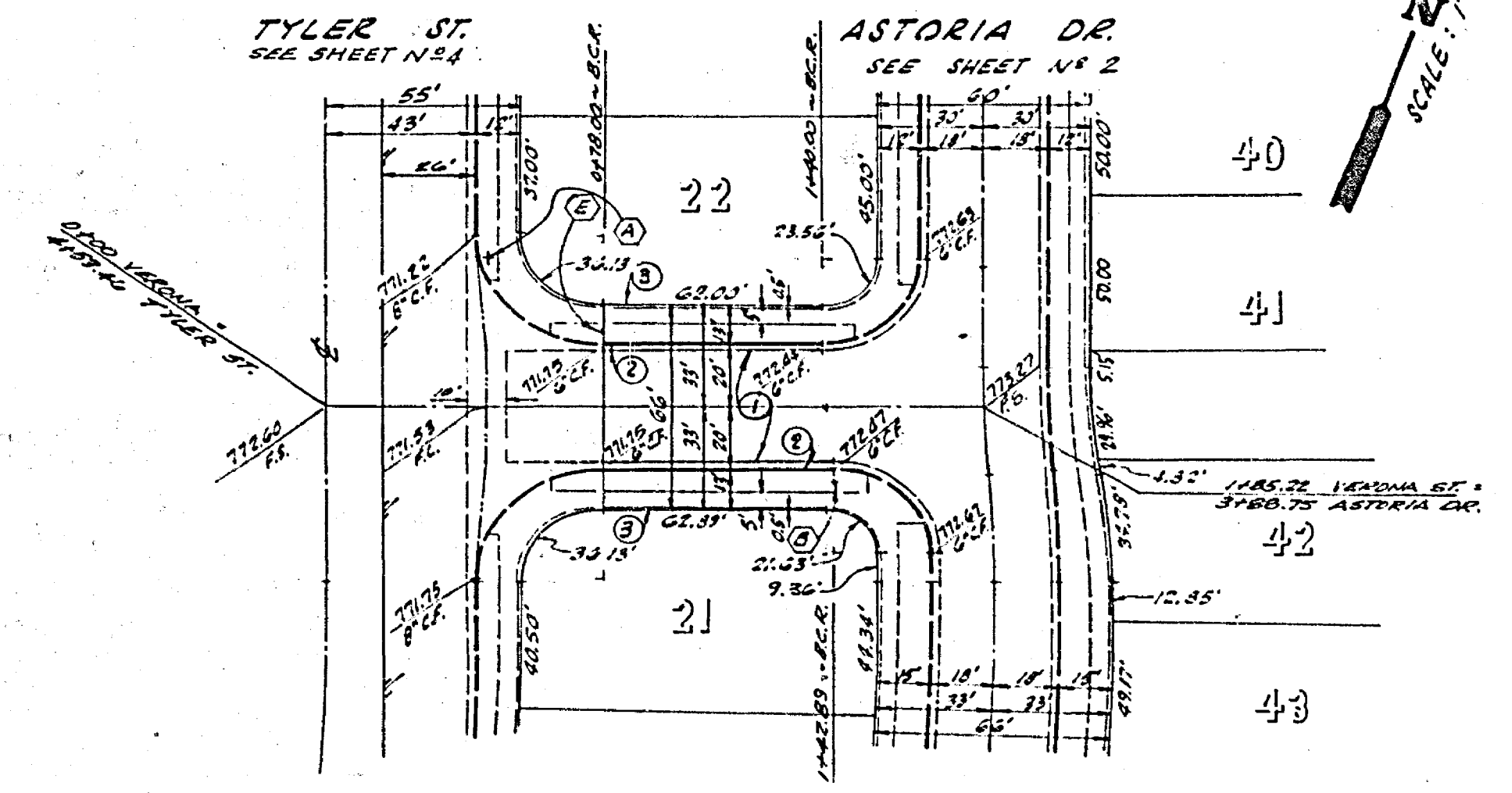


STREET NAME		SCHEDULE	ESTIMATE OF QUANTITIES	
			ITEM	QUANTITY
(A)	TYLER ST	6800	STREET	
	VERONA ST	10 000		
(B)	ASTORIA DR	13 000	2 1/2" AC NYSEAL COAT OVER 6" CLASS 2 BASE INTERL.	57.24 S.F.
	FALLSVALE LN	0 000	CONC. CURB & GUTTER (6" G.C.F.)	3.81 L.F.
			CONC. SIDEWALKS (4" THICK)	11.24 S.F.
			CONC. GUTTERS	12.00 S.F.
(C)	FALLSVALE LN	10 000	STREET NAME 3" V.S.	1 EA.
	SAN JOAQUIN HWY	0 000	STOP SIGN 30" OCTAGON	1 EA.
(D)	STOP SIGN #1	30" OCTAGON	AC WITH SEALCOAT OVER CLASS 3	
			BASE MATERIAL (TYLER STREET)	21.600 S.F.
			CONC. CURB & GUTTER (6" G.C.F.)	8.51 L.F.
(E)	NOT A THROUGH STREET W/3	11" x 21"	CONC. CURB ONLY TRANSITION (8" G.C.F.)	110 L.F.
			STREET CROWN	
			LEAST 18" R.C.P.	L.F.
			IN-CURB STRUCTURE (PER STD PLAN 410)	2 EA.

- GENERAL NOTES**
- IT SHALL BE THE RESPONSIBILITY OF THE CONTRACTOR TO CLEAR THE RIGHT OF WAY IN ACCORDANCE WITH THE PROVISIONS OF THE PLAN AS IT AFFECTS EACH UTILITY INCLUDING IRRIGATION LINES AND APPURTENANCES AND AT NO EXTRA COST TO THE CITY.
  - CONSTRUCTION SHALL BE IN ACCORDANCE WITH THE STD. SPECIFICATIONS FOR PUBLIC WORKS CONSTRUCTION 1930 ED. AND CITY OF RIVERSIDE STANDARD DRAWING.
  - GRADING WILL REQUIRE A PERMIT FOR A CUT OR FILL EXCEEDING 50 CUBIC YARDS OR A FILL OVER ONE FOOT IN DEPTH.
  - TRIM EDGE OF EXISTING PAVEMENT WHERE NEW PAVEMENT JOINS EXISTING PAVEMENT TO A CLEAN, STRAIGHT LINE. CONSTRUCT MATCH UP PAVING AS SHOWN AND OVERLAY PAVING AS DIRECTED IN THE FIELD TO PRODUCE A SMOOTH CROWN SECTION.
  - STREET NAME SIGNS AND POSTS TO BE FURNISHED AND INSTALLED BY THE DEVELOPER AS PER CITY STD. DRAW. N-662.
  - BASE AND PAVING SHALL NOT BE INSTALLED UNTIL THE SENDER PER CITY OF RIVERSIDE DRAW. N-454 (REVISED 5/20/50) HAS BEEN INSTALLED TO SPECIFICATIONS OF THE PUBLIC WORKS DEPT.
  - ERECT TRAFFIC CONTROL SIGNS AND POSTS PER STD. DNG. #666.
  - ALL "FLAGGED" ELEVATIONS SHALL BE STAKED BY THE ENGINEER.
  - DRIVEWAY APPROACHES TO CONFORM TO CITY OF RIVERSIDE STANDARD DRAWING N-302 AND ARE TO BE LOCATED IN THE FIELD.
  - TRAFFIC CONTROL SIGNS MUST BE INSTALLED PRIOR TO OPENING THE STREETS TO TRAFFIC.
  - THE DEVELOPER SHALL ARRANGE FOR A SOILS TEST AT THE SUB-GRADE LEVEL BY A SOILS ENGINEER. THICKNESS OF AC 1 BASE SHALL BE DETERMINED BY THE SOILS ENGINEER IN CONFORMANCE WITH CITY STD. & SPECS.



- CONSTRUCTION NOTES**
- CONST. P.C. PAVING & BASE PER TYPICAL SECTION.
  - CONST. CURB & GUTTER PER STD. N-200 (G.C.F.)
  - CONST. PROP. LINE 3/4" PER CITY STD. N-350.

**R. M. Galloway & Associates Inc.**  
 CIVIL ENGINEERS & PLANNERS  
 LAND AND MINERAL SURVEYORS, LANDSCAPE ARCHITECTS

APPROVED BY: *John K. Mandrell*  
 JOHN K. MANDRELL, R.C.E. 13703

DATE: 1-31-72

**CITY OF RIVERSIDE, CALIFORNIA**  
 DEPARTMENT OF PUBLIC WORKS

APPROVED BY: *[Signature]*  
 DIRECTOR OF PUBLIC WORKS

DATE: 1-15-72

**INDEXED MAP**

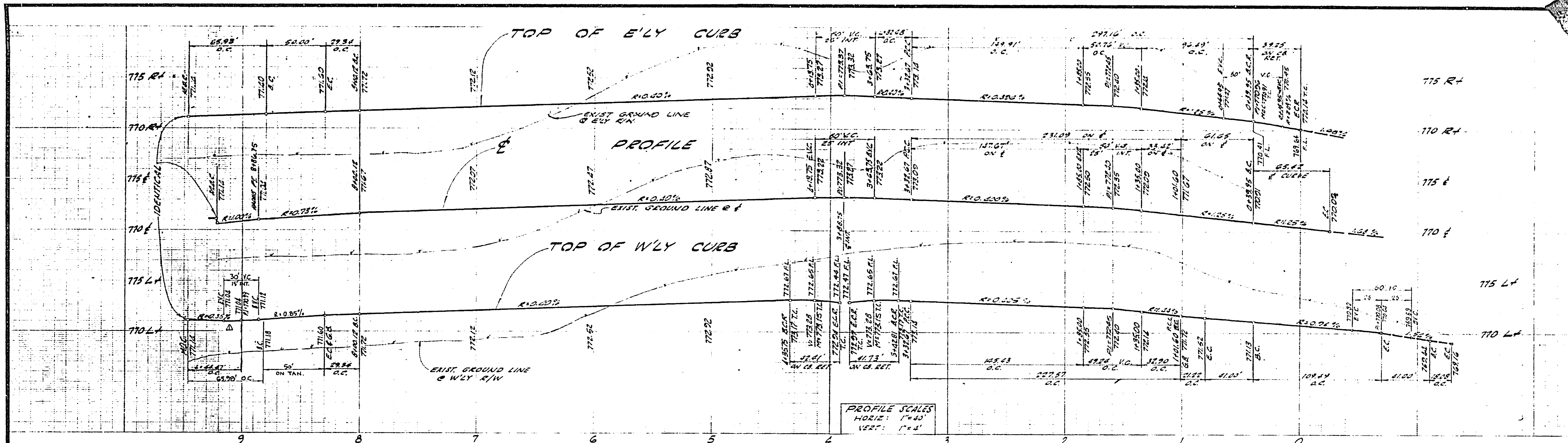
PROJECT NO. **R-1631**

**VERONA STREET**  
 TRACT NO. 4234

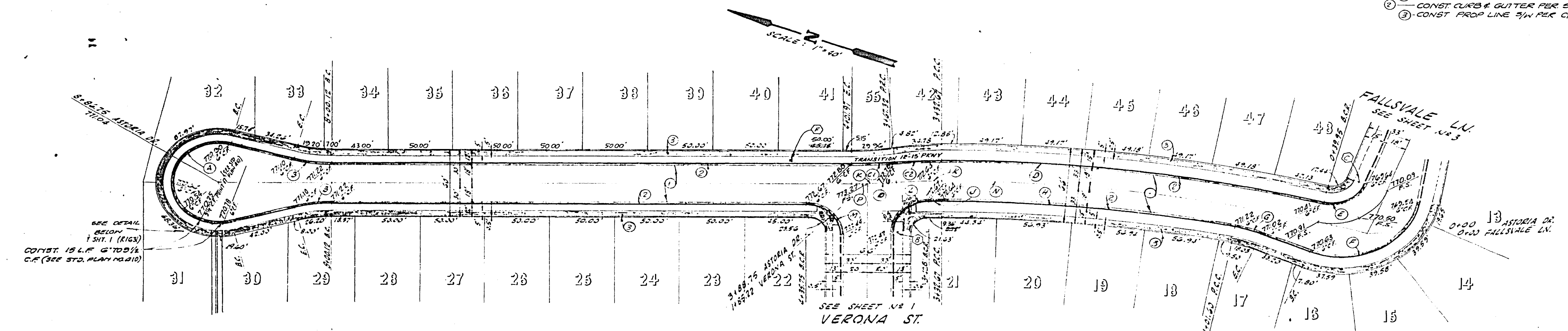
SHEET **1** OF **5**

HORIZ. SCALE: 1" = 40' VERT. SCALE: 1" = 4'

FILE NO.

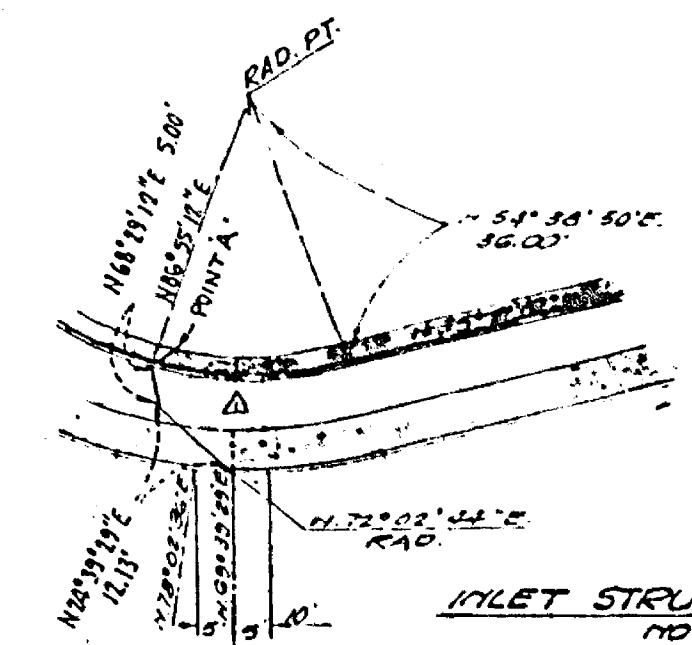


- CONSTRUCTION NOTES**
- CONST. A.C. PAVING & BASE PER. TYPICAL SECTION.
  - CONST. CURB & GUTTER PER. STD. N° 200 (G.C.P.).
  - CONST. PROP. LINE 1/4" PER. CITY STD. N° 350.

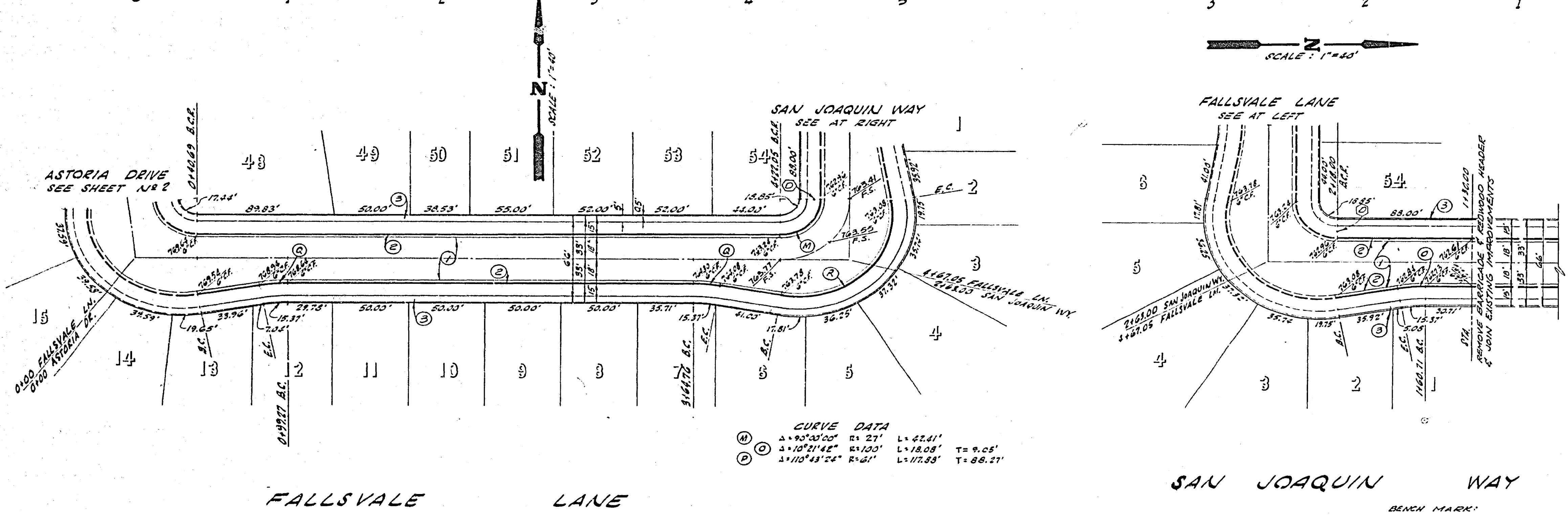
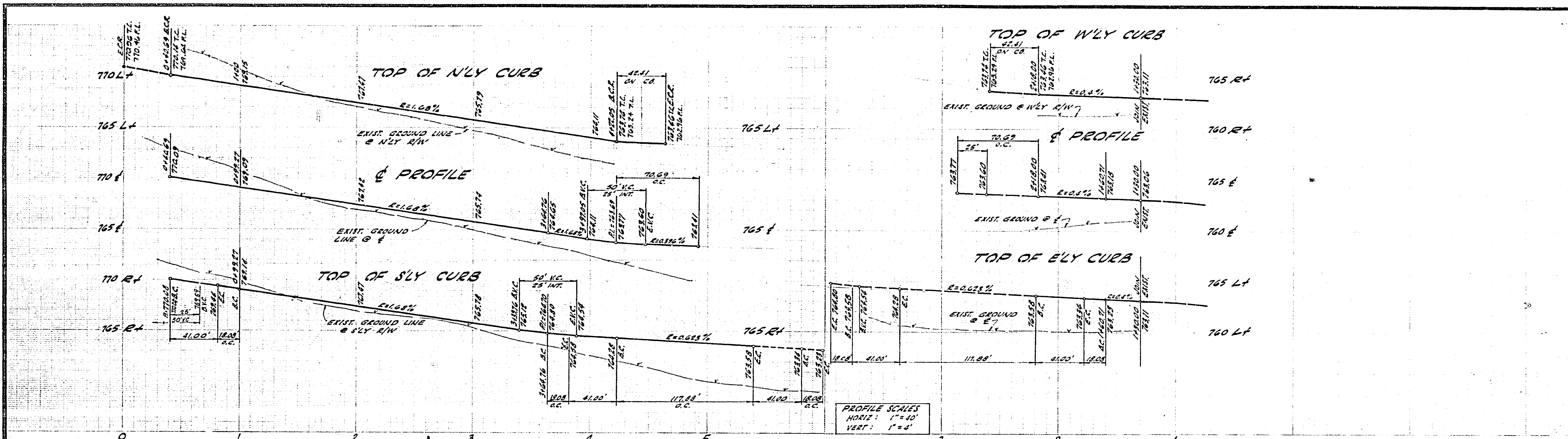


**CURVE DATA**

Station	Angle	Radius	Length	Tangent
32	41° 25' 18"	R=55'	L=131.00'	T=110.76'
33	15° 10' 30"	R=112'	L=201.50'	T=110.20'
34	4° 57' 00"	R=352'	L=330.00'	T=110.20'
35	14° 57' 40"	R=43'	L=36.21'	T=110.12'
36	14° 47' 00"	R=123.5'	L=221.15'	T=144.33'
37	8° 31' 30"	R=271'	L=39.25'	T=24.01'
38	11° 12' 51"	R=61'	L=105.49'	T=58.51'
39	11° 25' 21"	R=100'	L=121.21'	T=70.25'
40	11° 38' 38"	R=117.5'	L=133.57'	T=74.15'
41	11° 21' 11"	R=138.2'	L=150.00'	T=83.84'
42	4° 57' 48"	R=310'	L=31.25'	T=17.31'
43	8° 58' 48"	R=271'	L=41.73'	T=25.32'
44	9° 58' 00"	R=212'	L=32.41'	T=18.41'
45	12° 02' 39"	R=118'	L=22.67'	T=13.43'
46	5° 50' 12"	R=400'	L=21.43'	T=10.72'
47	1° 53' 39"	R=900'	L=13.22'	T=6.61'



<p><b>R. M. Galloway &amp; Associates Inc.</b> CIVIL ENGINEERS &amp; PLANNERS LAND AND MINERAL SURVEYORS / LANDSCAPE ARCHITECTS</p> <p>APPROVED BY: <i>John K. Mandrell</i> JOHN K. MANDRELL, R.C.E. 13703</p>	<p>DATE: 1-31-72</p>	<p><b>CITY OF RIVERSIDE, CALIFORNIA</b> DEPARTMENT OF PUBLIC WORKS</p>		<p>STREET PLAN &amp; PROFILE</p>	<p>PROJECT NO.</p>
		<p>APPROVED BY: <i>[Signature]</i> DIRECTOR OF PUBLIC WORKS</p> <p>DATE: 1-15-73</p>	<p>ASTORIA DRIVE TRACT NO. 4234</p>	<p>R-1631</p>	



**CURVE DATA**

(M)	$\Delta = 90^{\circ}30'00''$	$R = 27'$	$L = 42.61'$		
(P)	$\Delta = 10^{\circ}21'42''$	$R = 100'$	$L = 18.08'$	$T = 9.05'$	
(O)	$\Delta = 110^{\circ}43'24''$	$R = 61'$	$L = 17.93'$	$T = 88.21'$	

- CONSTRUCTION NOTES**
- CONST. A.C. PAVING & BASE PER. TYPICAL SECTION.
  - CONST. CURB & GUTTER PER. STD. N<sup>o</sup> 200 (G.C.F.)
  - CONST. PROP. LINE SW PER. CITY STD. N<sup>o</sup> 350.

BENCH MARK:  
 P.C. MARK ON EAST CURB ON TYLER  
 ON E. GAYLORD APPROX. PER. CITY  
 OF RIVERSIDE P.B. 706/1.  
 ELEV. 778.21

**R. M. Galloway & Associates Inc.**  
 CIVIL ENGINEERS & PLANNERS  
 LAND AND MUNICIPAL SURVEYORS, LANDSCAPE ARCHITECTS

APPROVED BY: *John K. Mandrell*  
 JOHN K. MANDRELL, R.C.E. 13703

DATE: 1/31/72

REVISIONS	APPR.	DATE

DESIGNED BY: E.E.W., DRAWN BY: E.E.W., CHECKED BY: E.E.W.

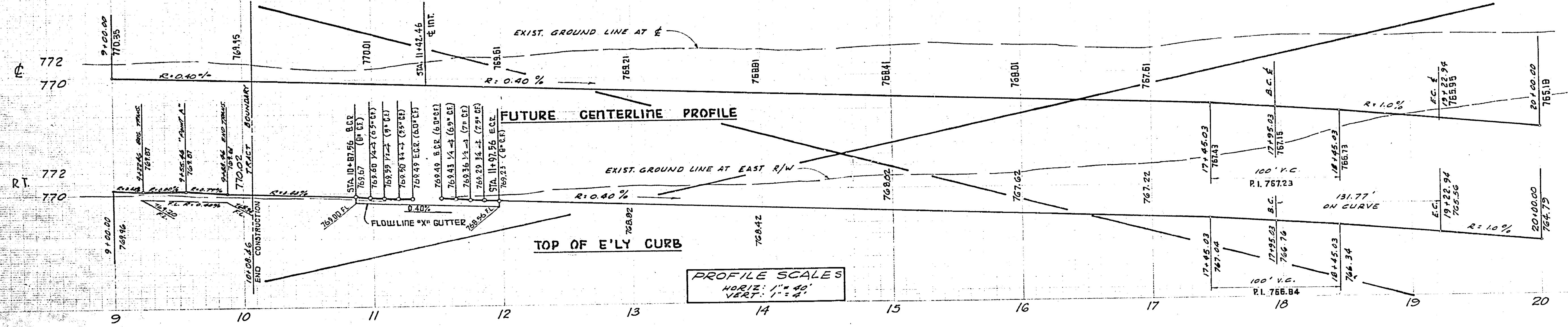
**CITY OF RIVERSIDE, CALIFORNIA**  
**DEPARTMENT OF PUBLIC WORKS**

APPROVED BY:	BY:	DATE:

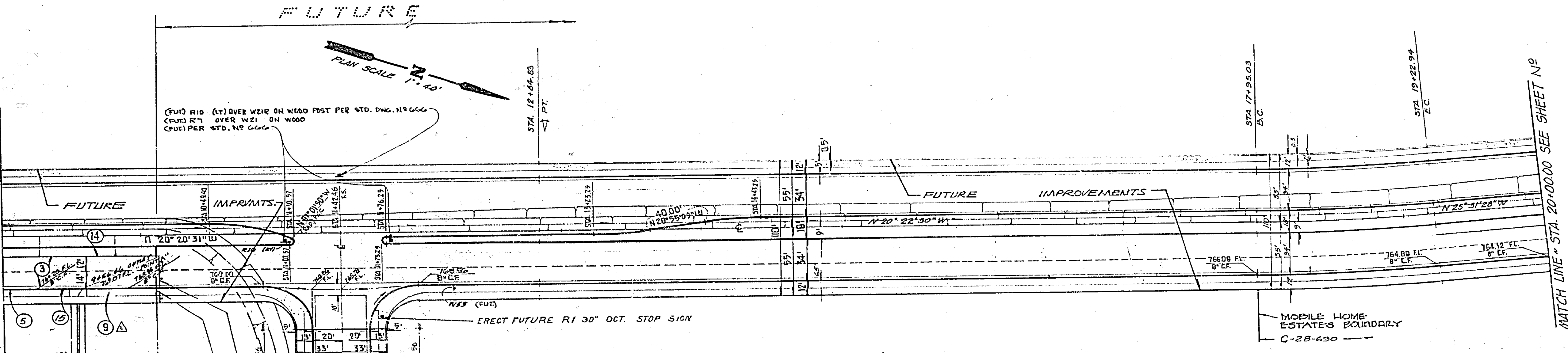
DATE: 1-15-72

STREET PLAN & PROFILE	PROJECT NO.
FALLSVALE LANE & SAN JOAQUIN WAY	R-1631
TRACT NO. 4234	SHEET 3 OF 3
HORIZ. SCALE: 1" = 40'	VERT. SCALE: 1" = 4'
FILE NO.	





MATCH LINE ~ STA. 9+00.00 SEE SHEET N-4



## TYLER STREET

- CONSTRUCTION NOTES**
- 13) CONST. CURB WITH BEAT COAT OVER 4" REINFORCED NATURAL MATERIAL OVER 10" OR 3" D.C. OVER 15" D.G. - NATIVE/SUB. A
  - 14) CONST. PROPERTY LINE SIDEWALK PER STD. NO. 350
  - 15) INSTALL REDWOOD HEADER AT E/W PER TYPICAL SECTION.
  - 16) CONST. CURB & GUTTER PER STD. NO. 200 (8" C.F.)
  - 17) CONST. 6" - 9 1/2" CURB FACE TRANSITION

**R. M. Calloway & Associates Inc.**  
 CIVIL ENGINEERS & PLANNERS  
 LAND AND MINERAL ENGINEERS

APPROVED BY: *[Signature]* DATE: 11-17-70  
 JOHN S. HANCOCK, R.C.E. 15,703

CITY OF RIVERSIDE, CALIFORNIA DEPARTMENT OF PUBLIC WORKS	
APPROVED BY: <i>[Signature]</i>	DATE: 7/23
OFFICE ENGINEER	TRAFFIC DIVISION
DIRECTOR OF PUBLIC WORKS	ASSISTANT CITY ENG.
DATE: 1-15-73	

STREET PLAN & PROFILE		PROJECT NO.
TYLER STREET ULTIMATELY FROM JURUPA AVE. TO 3500'S'LY		R-1631
TRACT NO 4234		SHEET 5 OF 5
HORIZ. SCALE: 1" = 40'	VERT. SCALE: 1" = 4'	FILE NO.