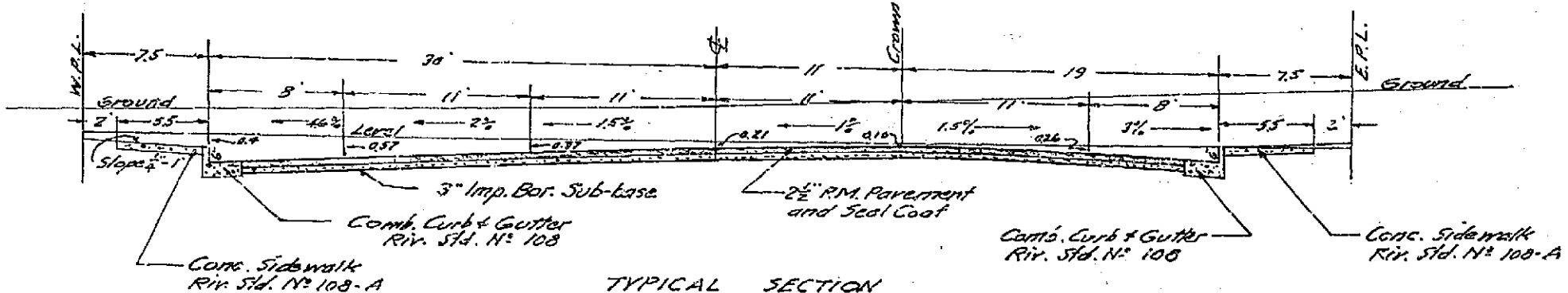
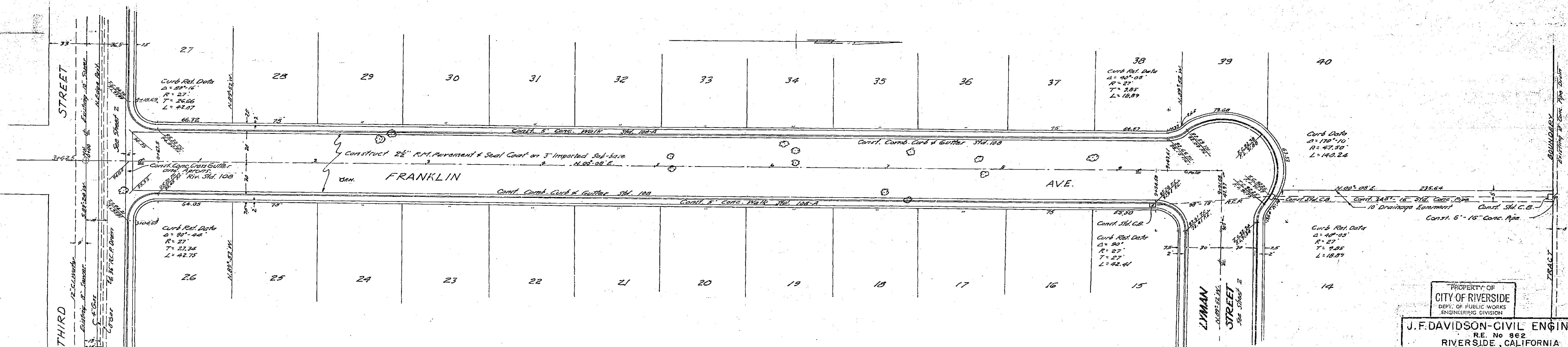
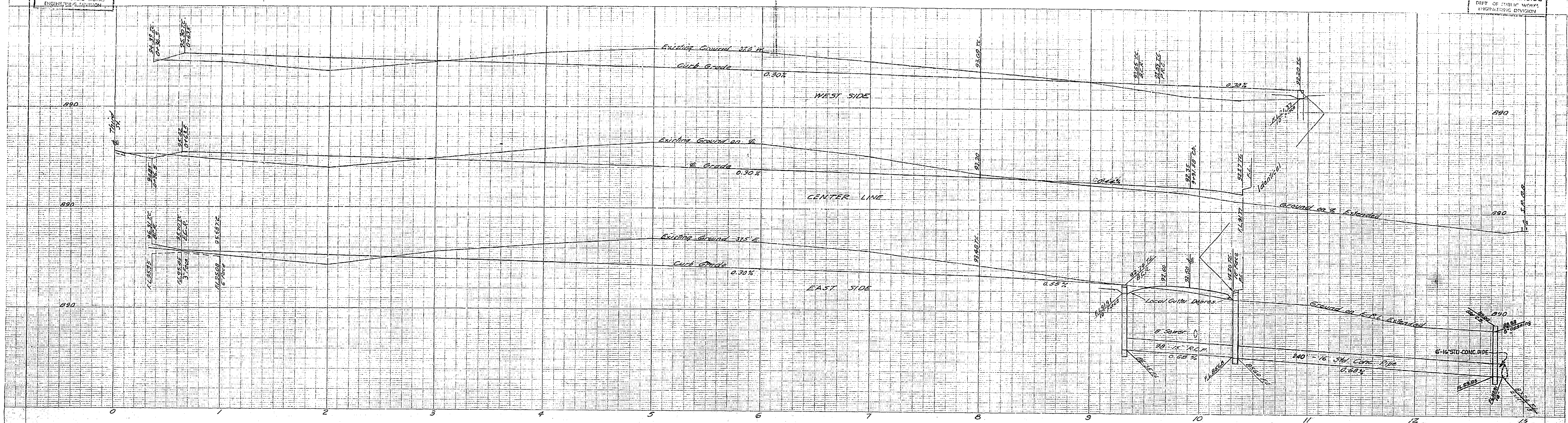


PROPERTY OF
CITY OF RIVERSIDE
DEPT. OF PUBLIC WORKS
ENGINEERING DIVISION

SCALE: 1" = 40'

SCALE: 1" = 40'

PROPERTY OF
CITY OF RIVERSIDE
DEPT. OF PUBLIC WORKS
ENGINEERING DIVISION



ESTIMATE OF QUANTITIES

- 3000 Lin. Ft. Comb. Curb & Gutter
- 1074 Sq. Ft. Cross Gutter & Aprons
- 17950 - Concrete Sidewalk
- 73312 - 2 1/2\"/>

117 Lin. Ft. 15\"/>

NOTE: Trees to be removed by subcontractor.

PROPERTY OF
CITY OF RIVERSIDE
DEPT. OF PUBLIC WORKS
ENGINEERING DIVISION

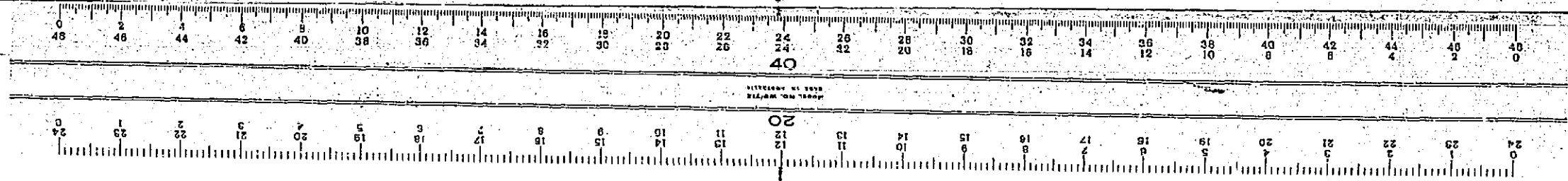
J.F. DAVIDSON-CIVIL ENGINEER
RE No 962
RIVERSIDE, CALIFORNIA
APPROVED BY: *[Signature]* DATE 11-5-57

CITY OF RIVERSIDE, CALIFORNIA
DEPARTMENT OF PUBLIC WORKS

STREET PLAN & PROFILE
FRANKLIN STREET
NON-RESIDENTIAL M-2 GENERAL
MANUFACTURING SUB. NE M-12 UNIT 2
HORIZ. SCALE 1" = 40' VERT. SCALE 1" = 4'

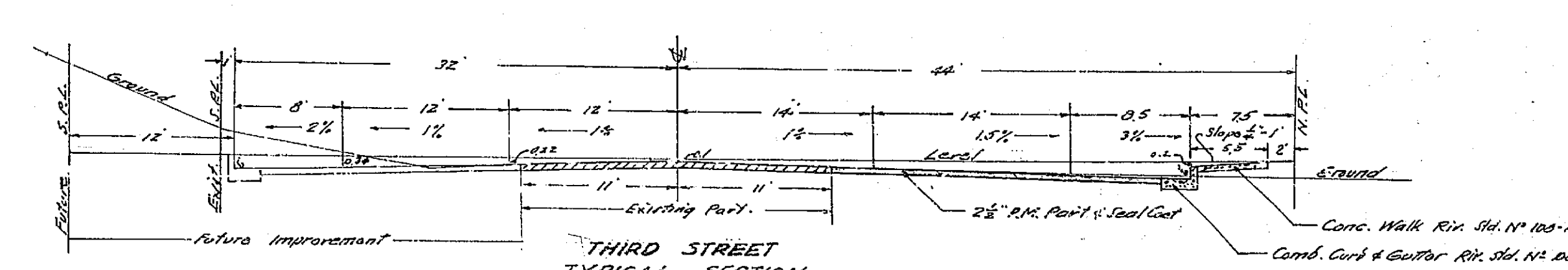
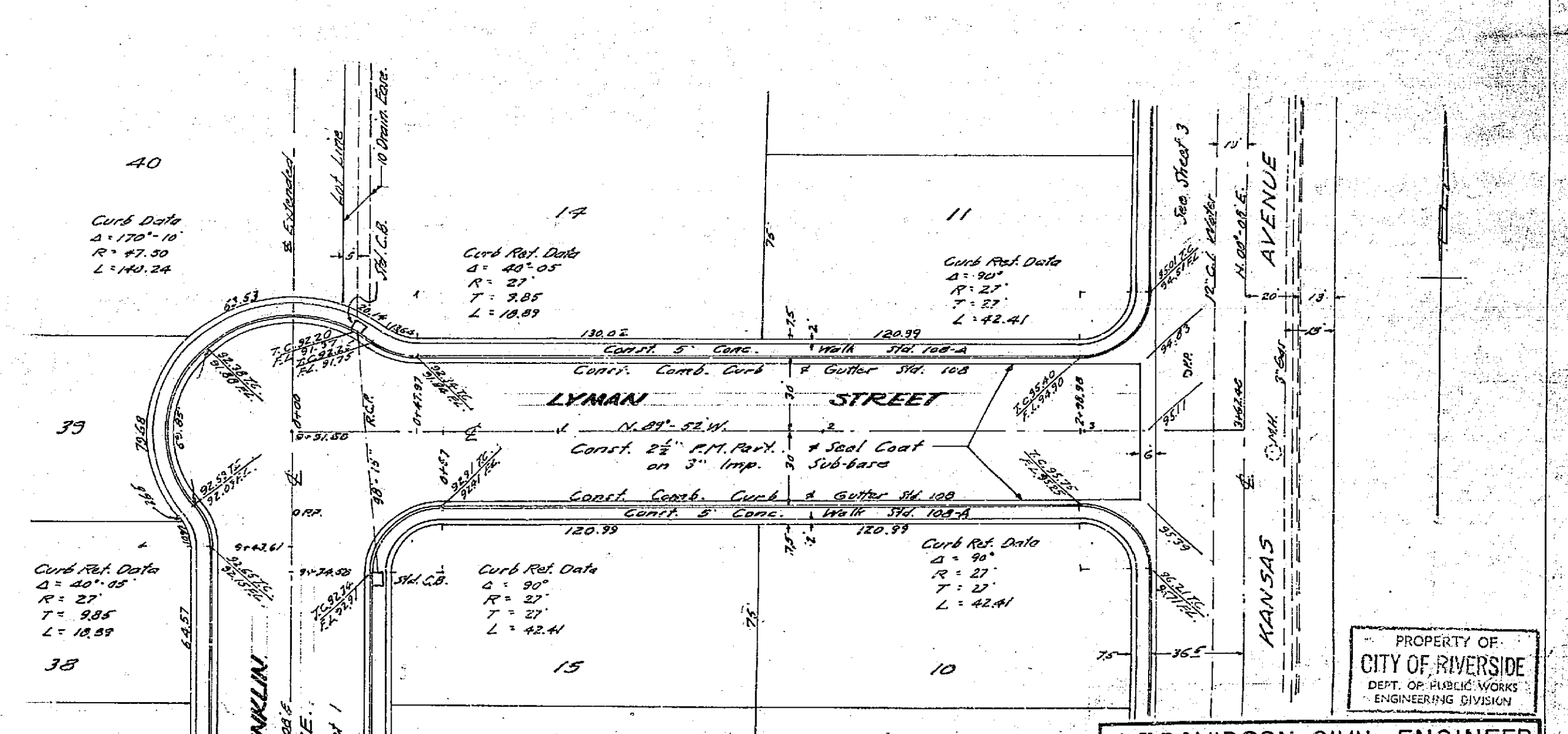
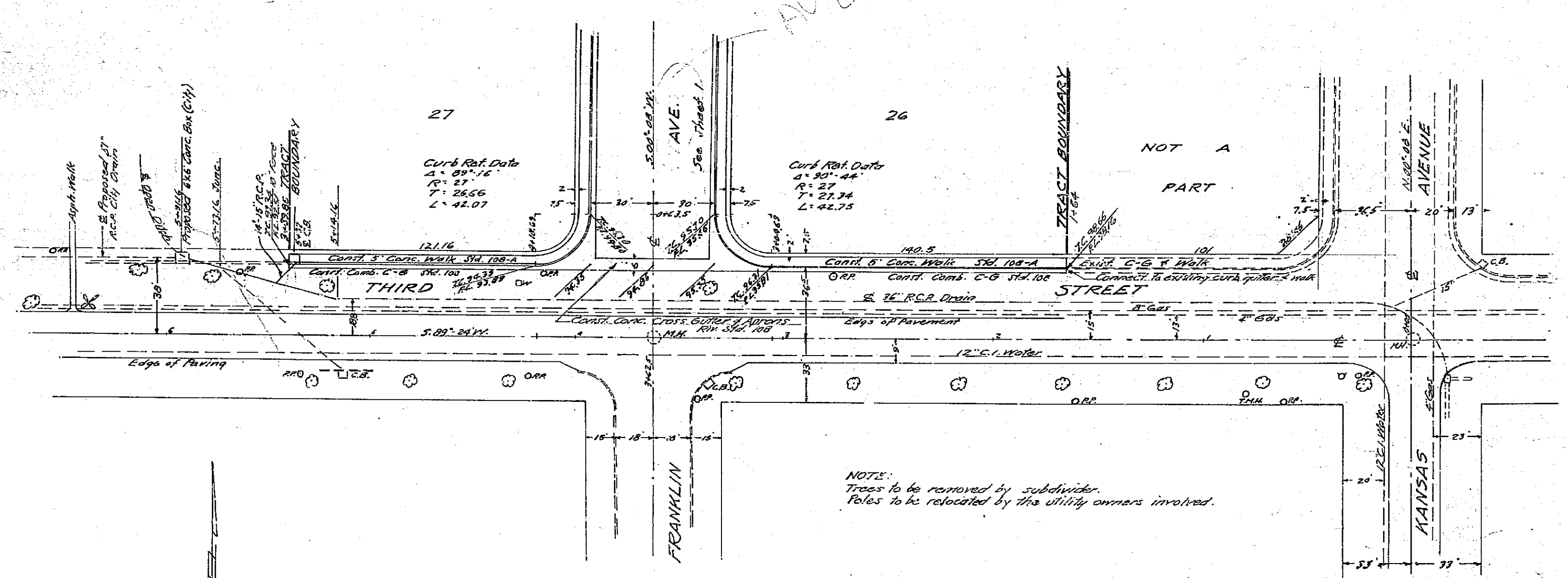
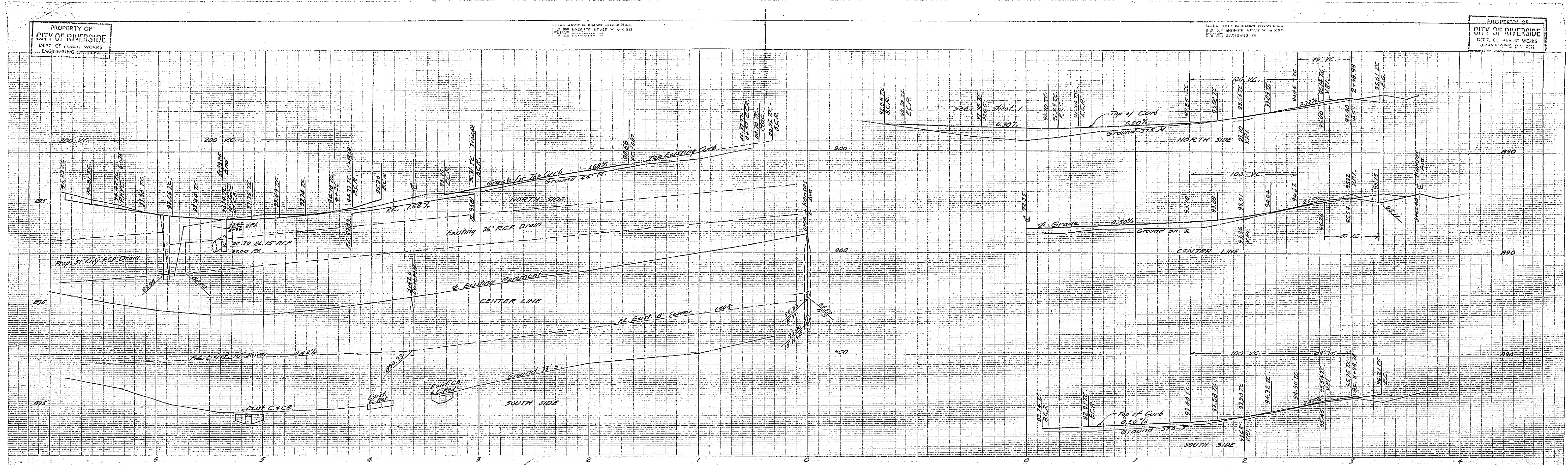
APPROVED BY: *[Signature]*
Director of Public Works
DATE 11-3-57
NO. **A-164**
SHEET 1 OF 1

PROPERTY OF
CITY OF RIVERSIDE
DEPT. OF PUBLIC WORKS
ENGINEERING DIVISION



PROPERTY OF CITY OF RIVERSIDE DEPT. OF PUBLIC WORKS ENGINEERING DIVISION

PROPERTY OF CITY OF RIVERSIDE DEPT. OF PUBLIC WORKS ENGINEERING DIVISION



THIRD STREET TYPICAL SECTION
 Scale: Vert. 1" = 4'

NOTE:
 Pavement by City of Riverside

SEE SHEET 1 FOR TYPICAL SECTION OF LYMAN ST. & FRANKLIN AVE.

PROPERTY OF CITY OF RIVERSIDE DEPT. OF PUBLIC WORKS ENGINEERING DIVISION

PROPERTY OF CITY OF RIVERSIDE DEPT. OF PUBLIC WORKS ENGINEERING DIVISION

J.F. DAVIDSON-CIVIL ENGINEER
 R.E. No 862
 RIVERSIDE, CALIFORNIA
 APPROVED BY: [Signature] DATE: 11-23-57

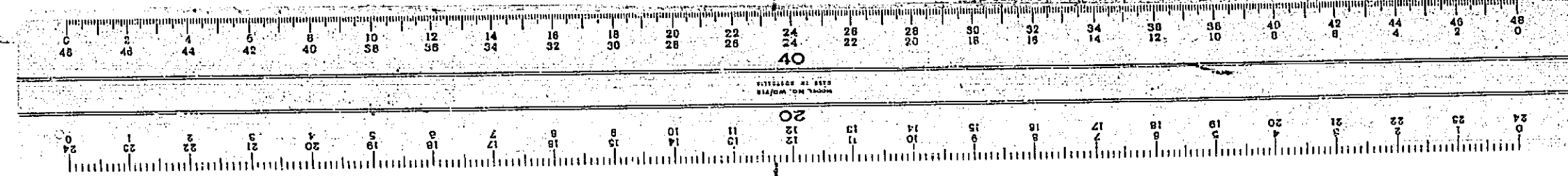
CITY OF RIVERSIDE, CALIFORNIA
 DEPARTMENT OF PUBLIC WORKS

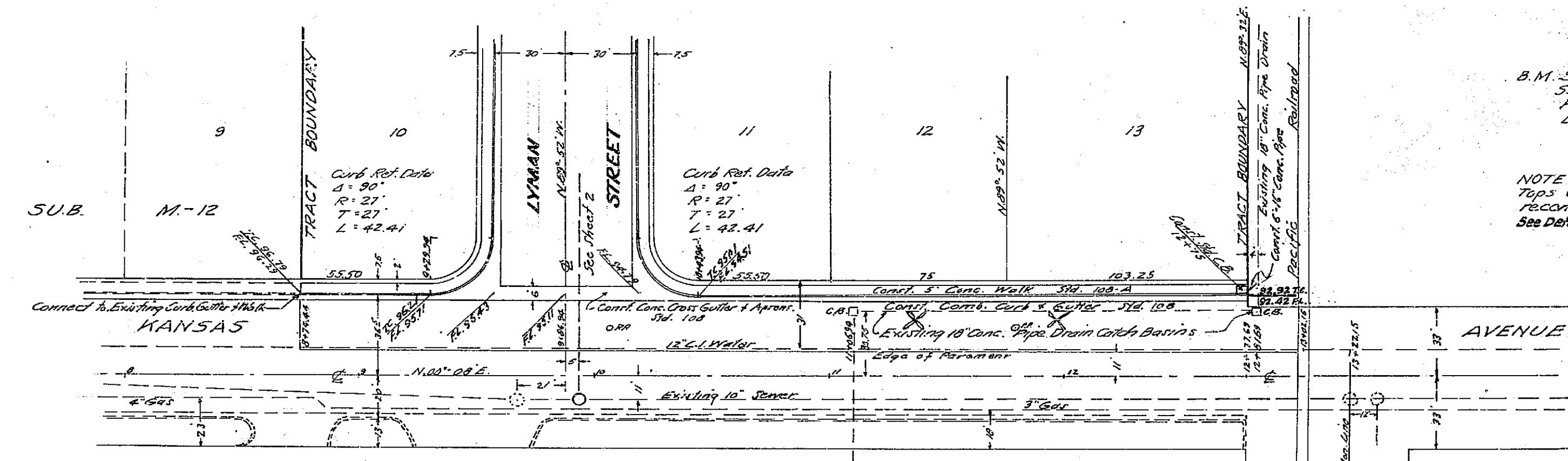
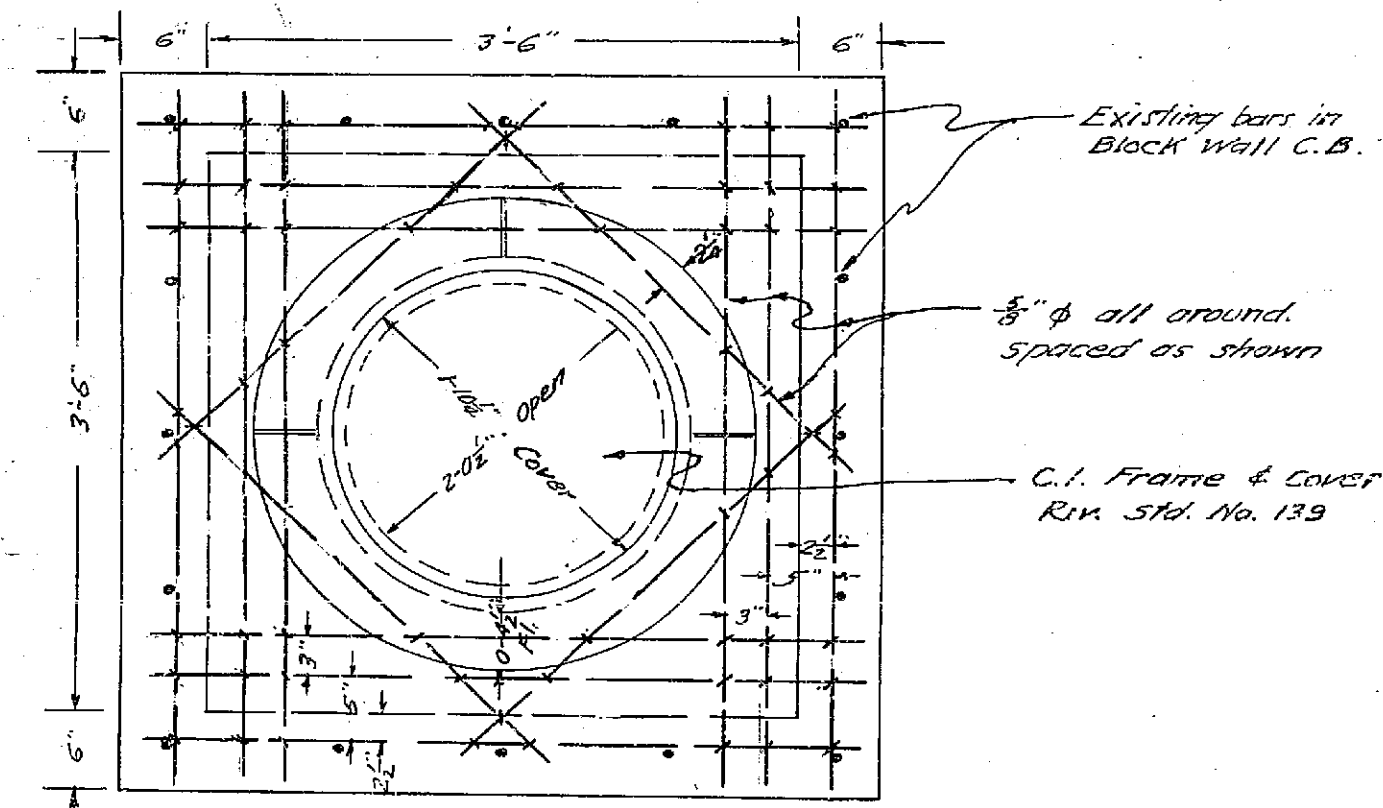
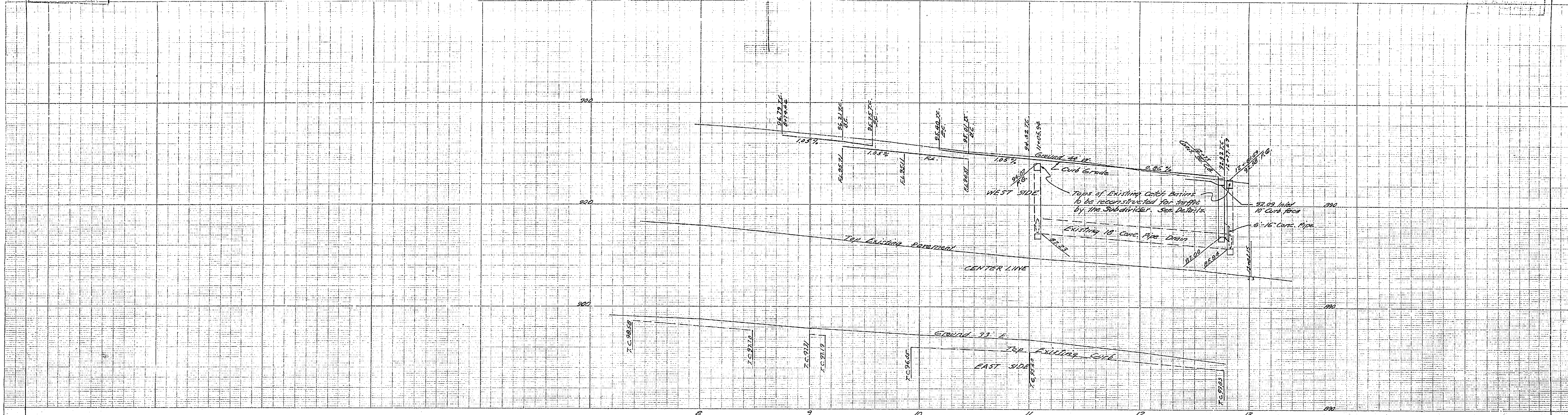
STREET PLAN & PROFILE
 THIRD STREET - LYMAN STREET
 NON-RESIDENTIAL M-2 GENERAL
 MANUFACTURING SUB. NO. M-12 UNIT 2
 HORIZ. SCALE 1" = 40' VERT. SCALE 1" = 4'

APPROVED BY: [Signature]
 Director of Public Works

DATE: 11-23-57

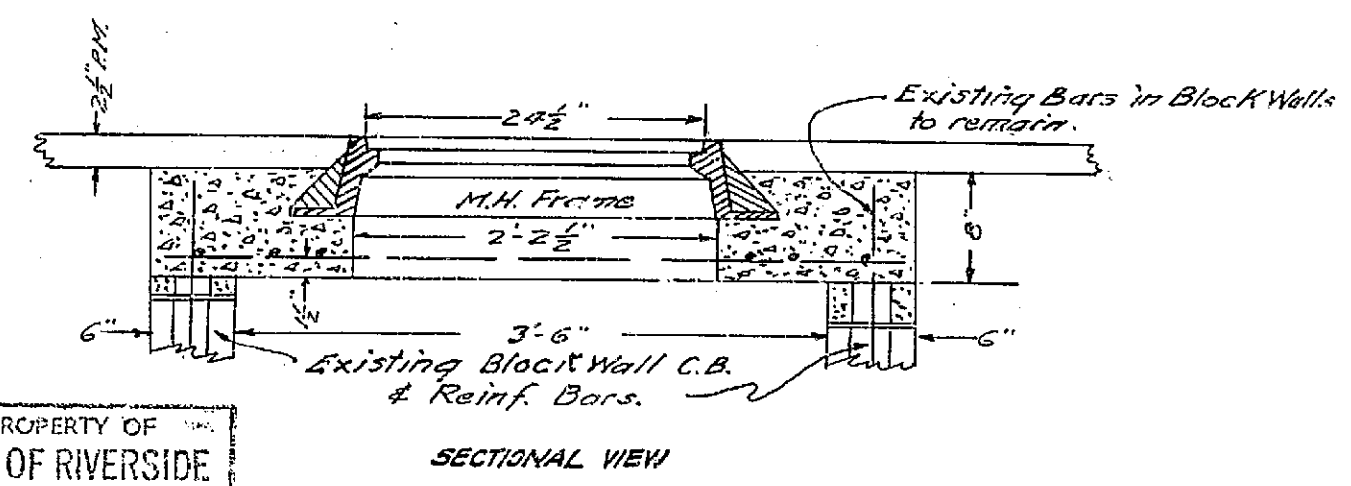
NO. **A-160**
 SHEET 2 OF 3



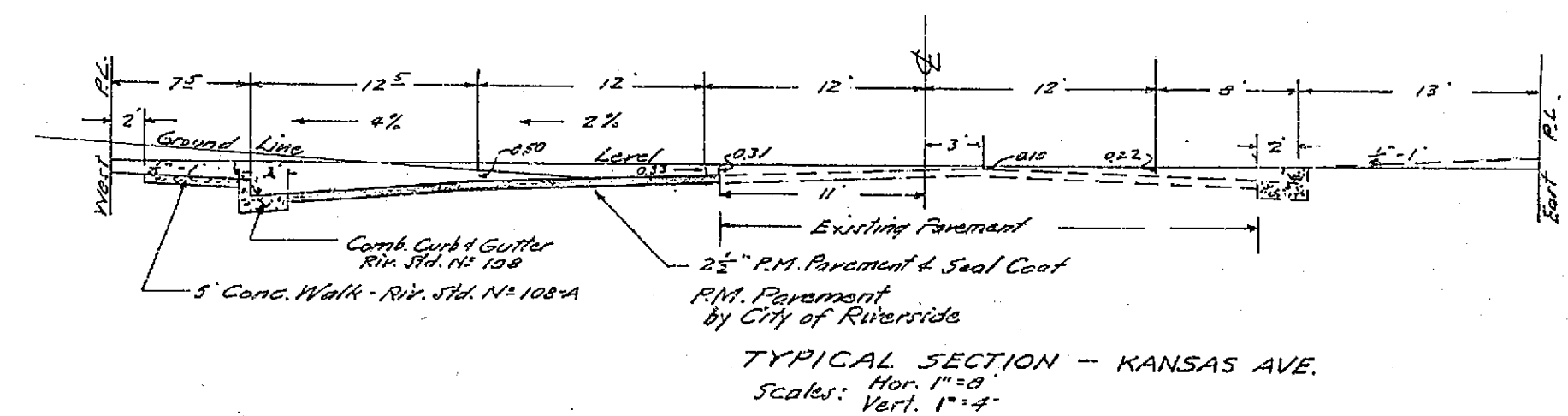


B.M. Spike and Lead in
S.W. Corner of
Park Ave. & Third St.
Elev. = 890.15

NOTE:
Tops of Existing Catch Basins to be
reconstructed for traffic by Subdivider.
See Detail.



NOTE:
Trees to be removed by subdivider.
Poles to be relocated by the utility
owners involved.



J.F. DAVIDSON - CIVIL ENGINEER
R.E. No. 862
RIVERSIDE, CALIFORNIA
APPROVED BY *[Signature]* DATE 12-3-57

CITY OF RIVERSIDE, CALIFORNIA
DEPARTMENT OF PUBLIC WORKS

STREET PLAN & PROFILE
KANSAS AVENUE
NON-RESIDENTIAL M-2 GENERAL
MANUFACTURING SUB. NO. M-12 UNIT 2
HORIZ. SCALE 1" = 40' VERT. SCALE 1" = 4'

APPROVED BY *[Signature]*
Director of Public Works

DATE 12-3-57 SHEET 3 OF 3

