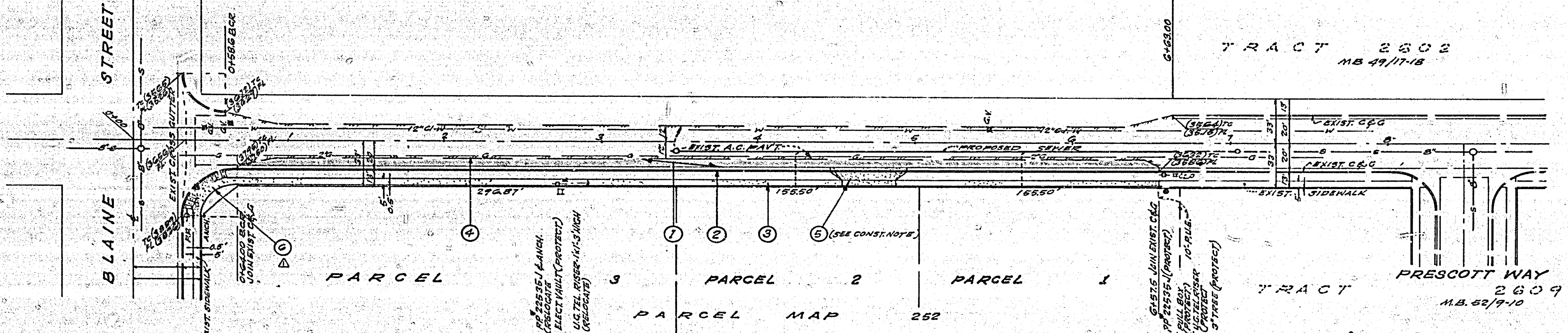


- GENERAL NOTES**
- CONSTRUCTION SHALL BE IN ACCORDANCE WITH STANDARD SPECIFICATIONS FOR PUBLIC WORKS CONSTRUCTION, 1973 EDITION AND STANDARD DRAWINGS.
 - IT SHALL BE THE RESPONSIBILITY OF THE CONTRACTOR TO CLEAR THE RIGHT OF WAY IN ACCORDANCE WITH THE PROVISIONS OF THE LAW AS IT AFFECTS EACH UTILITY INCLUDING IRRIGATION LINES AND APPURTENANCES AND AT NO COST TO THE CITY.
 - PRIME COAT, SEAL COAT AND PAINT BINDER ARE REQUIRED.
 - TRIM EDGES OF EXISTING PAVEMENT WHERE NEW PAVEMENT JOINS EXISTING PAVEMENT TO A CLEAN STRAIGHT EDGE. CONSTRUCT MATCH UP PAVING AS SHOWN ON PLAN AND OVERLAY PAVING AS DIRECTED IN THE FIELD TO SMOOTH TRANSITION.
 - THIS DEVELOPER SHALL PROVIDE FOR A SOIL TEST AT SUB GRADE LEVEL BY A SOILS ENGINEER. THICKNESS OF PAVEMENT AND TYPE OF AGGREGATE BASE SHALL BE DETERMINED BY THE SOILS ENGINEER AND SUBMITTED TO THE CITY OF RIVERSIDE FOR APPROVAL PRIOR TO CONSTRUCTION.
 - CURB AND GUTTER SHALL BE STAKED WITH 3' OFFSETS AT 25' INTERVALS.



CANYON CREST DRIVE

- CONSTRUCTION NOTES**
- CONST. 3" AC. OVER 1.5" COMPACTED BASE
 - CONST. CURB & GUTTER (C.G.) PER STD. NO. 200.
 - CONST. PROPERTY LINE SIDEWALK PER STD. NO. 360.
 - REMOVE EXIST. 2" AC. ROAD SURF.
 - CONST. DRIVEWAY APPROACH PER STD. NO. 302.
 - CURB & GUTTER TO BE DETERMINED BY OWNER, AND TO BE APPROVED BY THE TRAFFIC ENGINEER.
 - CONST. WHEEL CHAIR RAMP PER STD. NO. 304.

HAWKINS, ROBERTSON & ASSOC.
 ENGINEERS & SURVEYORS
 RIVERSIDE, CALIFORNIA
Charles E. Redburn 12-5-72
 R.C.S. 16016 DATE

NO.	REVISIONS	DATE
1	ADD WHEEL CHAIR RAMP PER STD. NO. 304 (REV. FOR R.M. 252) C.E.R. U/L/L	12-5-72
2	Added paving section	10-11-72

CITY OF RIVERSIDE, CALIFORNIA
 DEPARTMENT OF PUBLIC WORKS
 APPROVED BY: *[Signature]*
 OFFICE ENGINEER
 DATE: 5-2-74
 APPROVED BY: *[Signature]*
 DIRECTOR OF PUBLIC WORKS
 DATE: 5-2-74

BENCH MARK
 CH. 1035.87
 5' CURB RETURN, CANYON CREST DR. @ BLAINE ST. @ BLAINE ST. 24' 20" RT.

STREET PLAN & PROFILE
CANYON CREST DRIVE
 FROM BLAINE ST. TO 675.0' NORTH OF BLAINE ST.
 PARCEL MAP NO. 252
 HORIZ. SCALE: 1" = 40' VERT. SCALE: 1" = 4'

INDEXED TO: PROJECT NO. **R-1641**
 SHEET **1** OF **1**
 FILE NO. **72-226B**