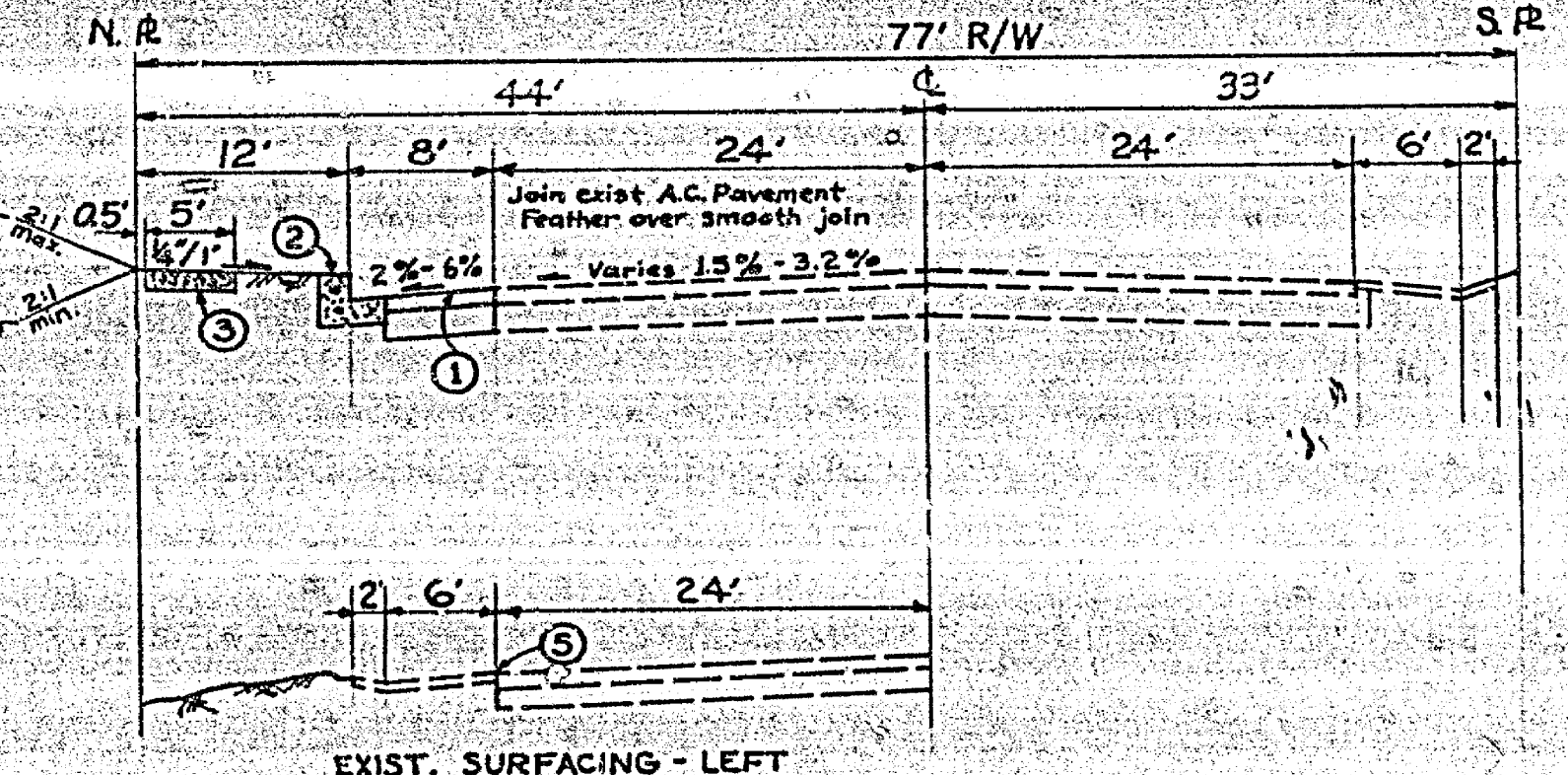
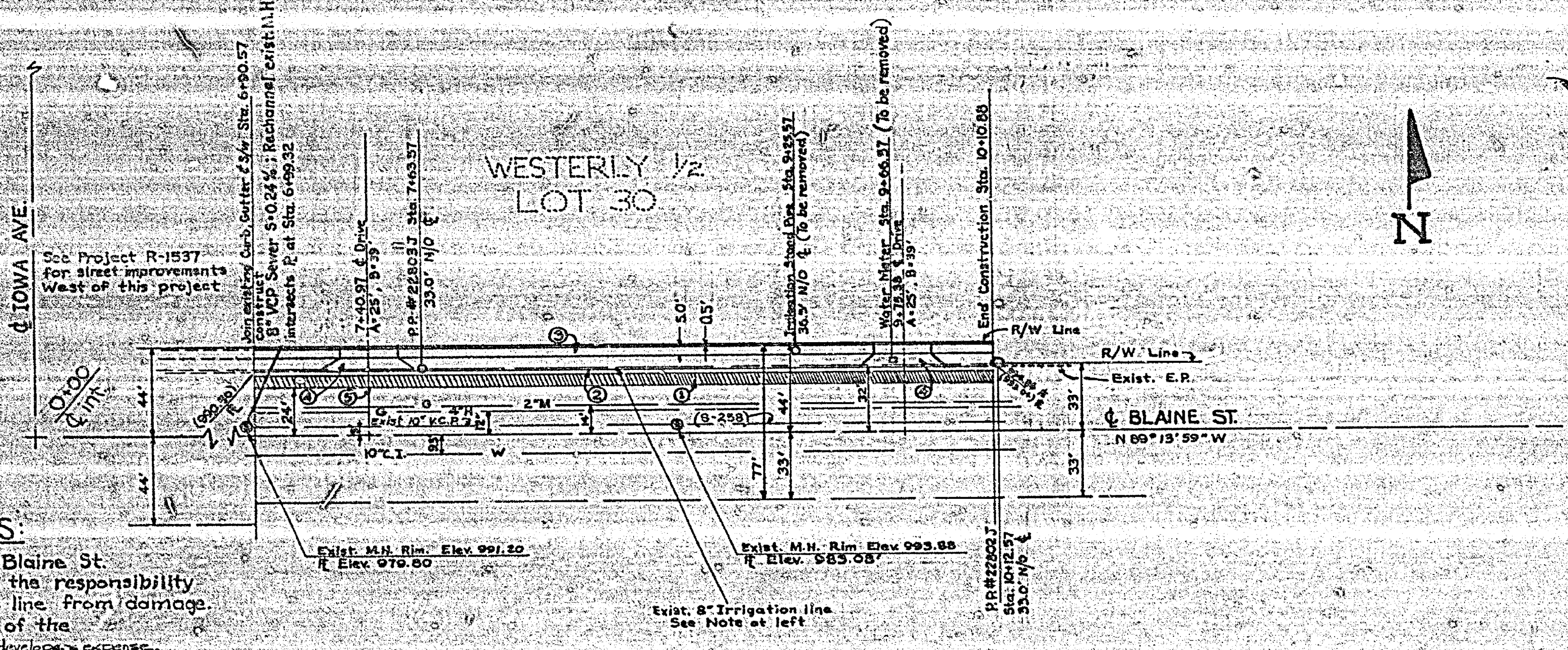


GENERAL NOTES

1. Construction shall be in accordance with Standard Specifications for Public Works Construction, 1970 Edition, and City of Riverside Standard Drawings.
2. Bench Mark, elev. 941.005
Brass disk stamped (17 A) capped at the int. of \bar{C} of Third St. and \bar{C} Chicago Ave.
F.B. 7/7/68

NOTE CONCERNING IRRIGATION LINES:

An "Active" Irrigation Line Exists $\approx 33'$ N/O the \bar{C} of Blaine St. The exact location of this line is unknown. It will be the responsibility of the Street Improvement Contractor to protect this line from damage. Any relocation required, will be to the satisfaction of the Engineer, Water Div., Public Utilities Dept. and at the developer's expense. This line is to remain in service.



TYPICAL SECTIONS
BLAINE STREET
STA. 6+90.57 - STA. 10+10.88
NO. SCALE
11.7

- CONSTRUCTION NOTES**
1. Remove existing A.C. and Reconstruct 4" A.C. over 10" 8-6 Base.
 2. Const. P.C.C. Curb & Gutter, 6" curb face per Std. Dwg. No. 200.
 3. Const. P.C.C. Sidewalk per City of Riverside Std. Dwg. No. 350.
 4. Const. P.C.C. Driveway Approach per City of Riverside Std. Dwg. No. 302.
 5. Sawcut exist. A.C. pavement, feather over smooth join.

Approved by: *Philip A. Gustafson* 3-8-73
Chief Public Utilities Engineer - Water

Prepared under the Supervision of: *Philip A. Gustafson* R.C.E. No. 13875

DATE: 3/1/73

APPROVED BY OFFICE ENGINEER DATE: 2/22/73	BY DATE: 2/22/73	APPROVED BY DIRECTOR OF PUBLIC WORKS DATE: 3/1/73
---	---------------------	---

CITY OF RIVERSIDE, CALIFORNIA
DEPARTMENT OF PUBLIC WORKS

BLAINE STREET
FROM 690.57 FEET EAST OF IOWA AVE. TO 1010.88 FEET EAST OF IOWA AVE.
C-17-723

PROJECT NO. R-1643
SHEET 1 OF 1
FILE NO.