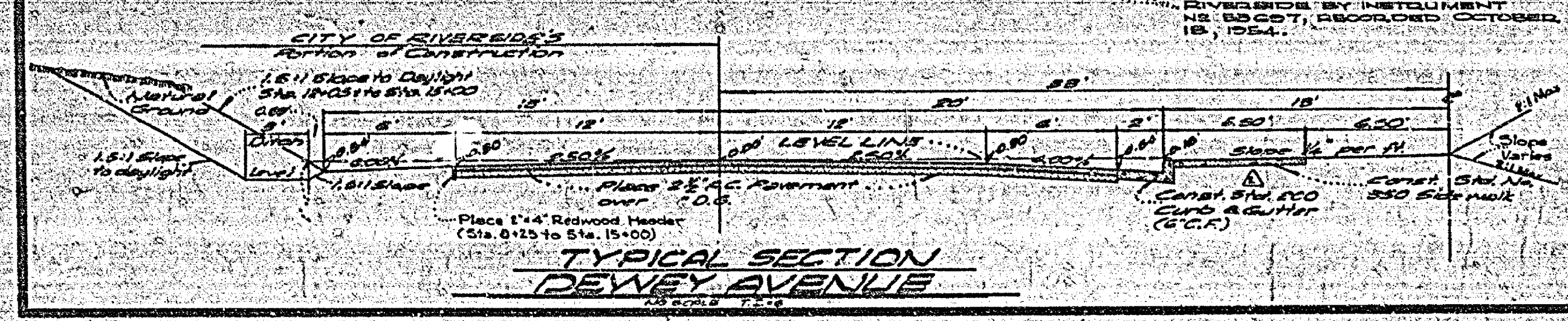
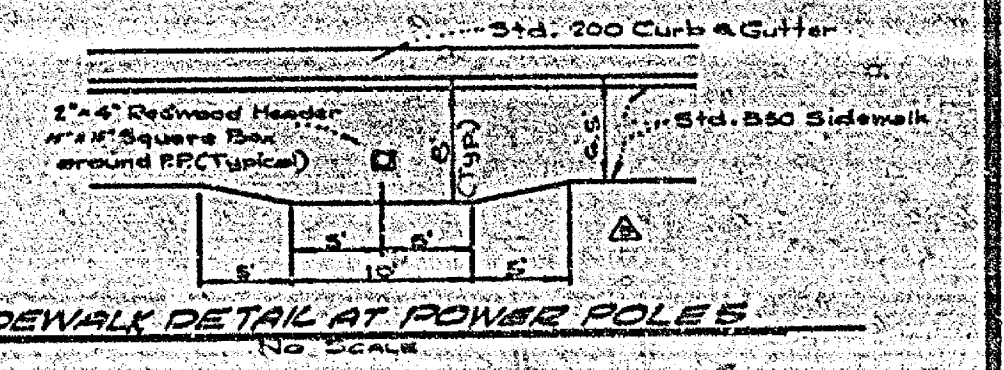
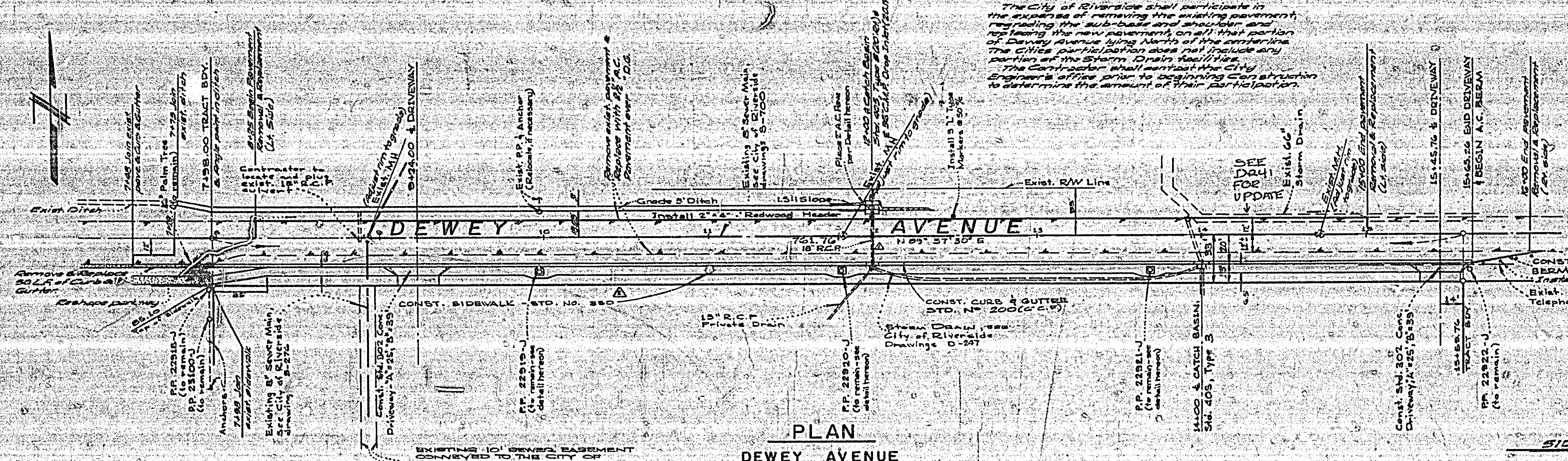
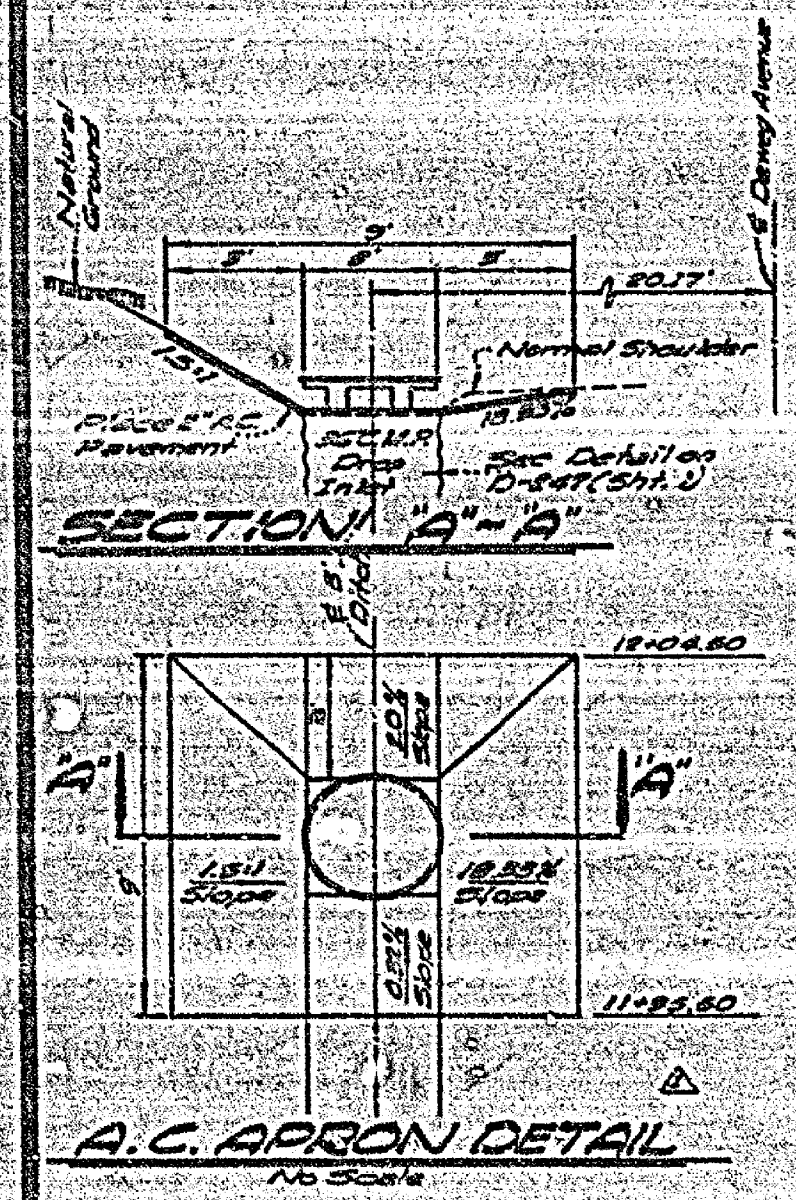


**PROFILE  
DEWEY AVENUE**

**NOTE:**  
The City of Riverside shall participate in the expense of removing the existing pavement, regarding the sub-base and structure and replacing the new pavement on all that portion of Dewey Avenue lying North of the centerline. The City's participation does not include any portion of the Storm Drain facilities. The Contractor shall notify the City Engineer's office prior to beginning construction to determine the amount of their participation.

- General Notes:**
- Construction shall be in accordance with the Standard Specifications for Public Works Construction 1970 Edition as per City of Riverside Standard Drawings.
  - All flagged elevations shall be staked in the field by the Engineer.
  - The Subdivider shall arrange for a soil test to be made by Soils Engineer after the Street has been prepared to rough grade. Depth of base material 4" A.C. paving shall be determined by the City of Riverside Design Standard and Test Procedures.

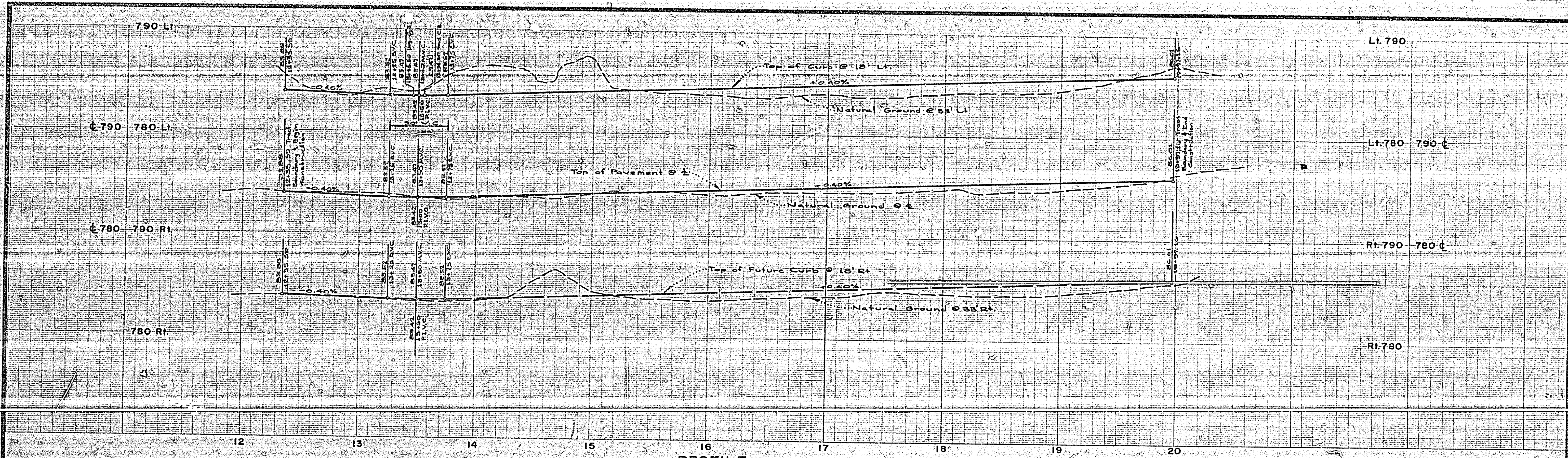


**ALBERT A. WEBB ASSOCIATES**  
CIVIL ENGINEERS  
RIVERSIDE, CALIFORNIA  
APPROVED BY: *[Signature]* DATE: 12/14/72  
R.E. No. 10036  
W-10-126 FOR: A.C. NEUDLEY 7.8.1027

NO.	REVISIONS	DATE	BY	DATE
1	ADDED SIDEWALK DETAIL 1/19/73	1/19/73	LL	
2	REVISIONS TO PLAN AND PROFILE	2/1/73	LL	
3	ADDED A.C. APRON DETAIL	2/1/73	LL	
4	REVISIONS TO PLAN AND PROFILE	2/1/73	LL	

**CITY OF RIVERSIDE, CALIFORNIA**  
**PUBLIC WORKS DEPARTMENT**  
APPROVED BY: *[Signature]* DATE: 4/30/73  
PRINCIPAL ENGINEER  
TRAFFIC DIVISION  
CHIEF PUBLIC WORKS ENGINEER

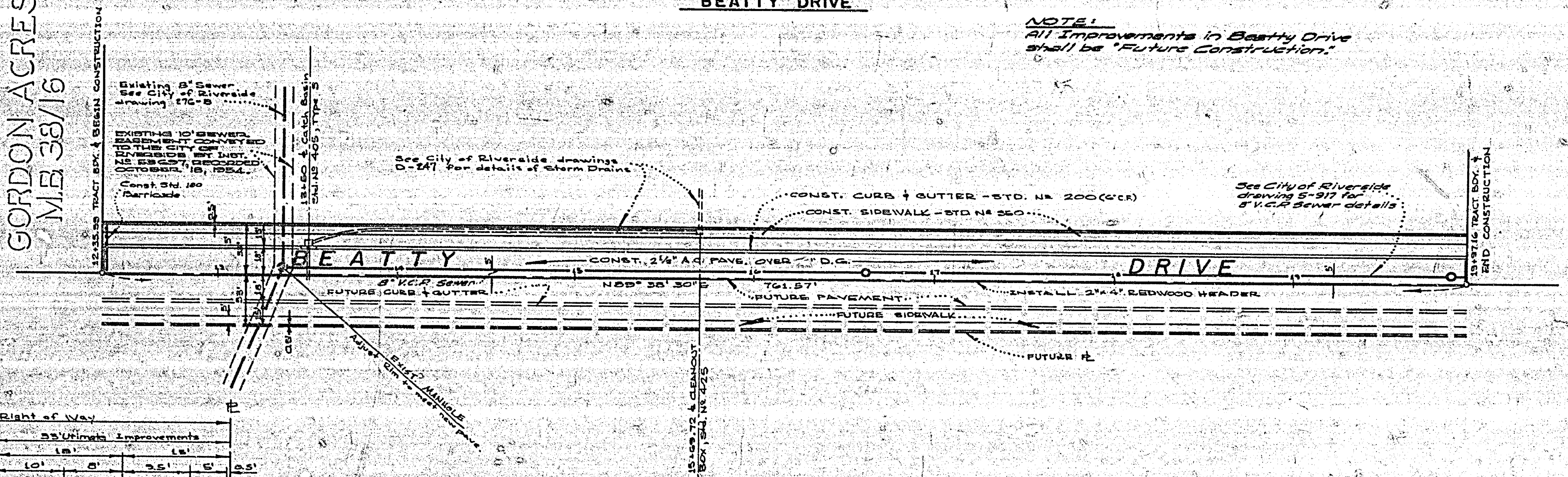
**TRACT NO. 4670**  
**STREET PLAN AND PROFILE**  
**DEWEY AVENUE**  
INDEXED MAP  
ACCOUNT No. 70-126  
DRAWING NUMBER  
**R-1646**  
SHEET 1 OF 2  
70-126-A  
SCALE: HORIZ. 1" = 40' VERT. 1" = 4'



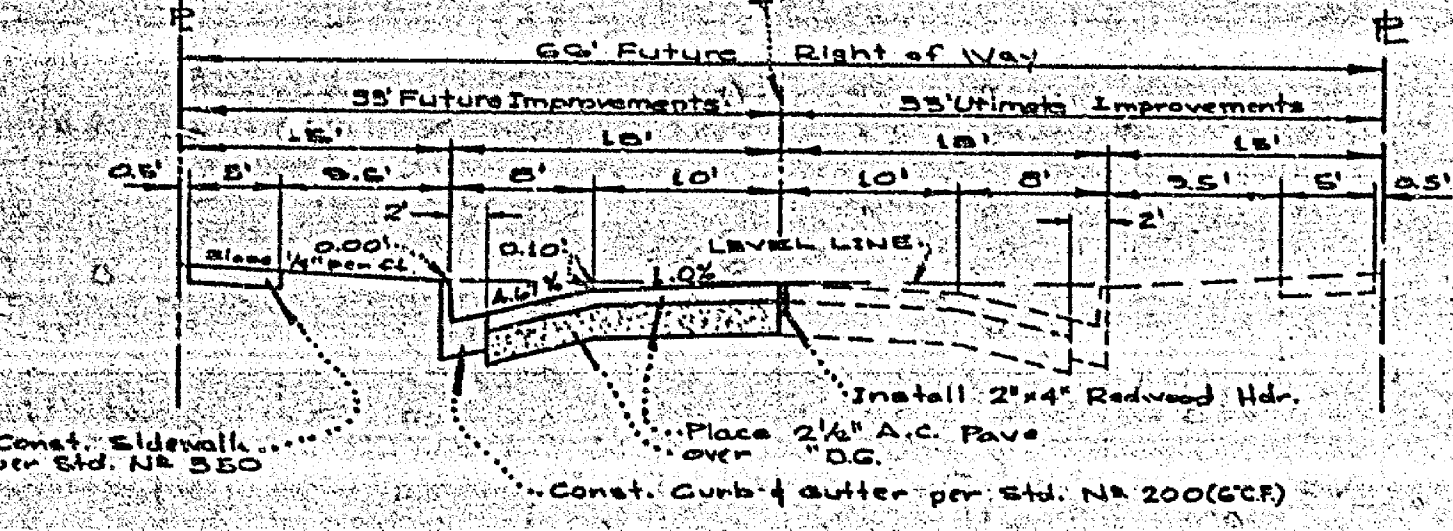
**PROFILE  
BEATTY DRIVE**

**NOTE:**  
All Improvements in Beatty Drive  
shall be "Future Construction."

**GORDON ACRES  
M.B. 38/16**



**PLAN  
BEATTY DRIVE**



**TYPICAL SECTION  
BEATTY DRIVE**

NO SCALE  
1/4" = 1'

ALBERT A. WEBB ASSOCIATES CIVIL ENGINEERS RIVERSIDE, CALIFORNIA APPROVED BY: <i>[Signature]</i> DATE: 1/24/73 R.E. No. 15086 W.D. 70-126 FOR A.C. NEUDLEY P.B. 1027	CITY OF RIVERSIDE, CALIFORNIA PUBLIC WORKS DEPARTMENT APPROVED BY: <i>[Signature]</i> DATE: 1/24/73 PRINCIPAL ENGINEER PUBLIC DEPARTMENT TRAFFIC DIVISION CHIEF PUBLIC WORKS ENGINEER DATE: 4-30-73	TRACT NO. 4670 STREET PLAN AND PROFILE BEATTY DRIVE SCALE: HORIZ: 1" = 40' VERT: 1" = 4'	ACCOUNT NO. 70-126 DRAWING NUMBER <b>R-1646</b> SHEET 2 OF 2 70-126-A
			BENCH MARK: 2-1142-1861 Brass disc in headwell under railroad tracks, Approx. Sta. 0+75 Dewey Avenue. Elev. 788.56