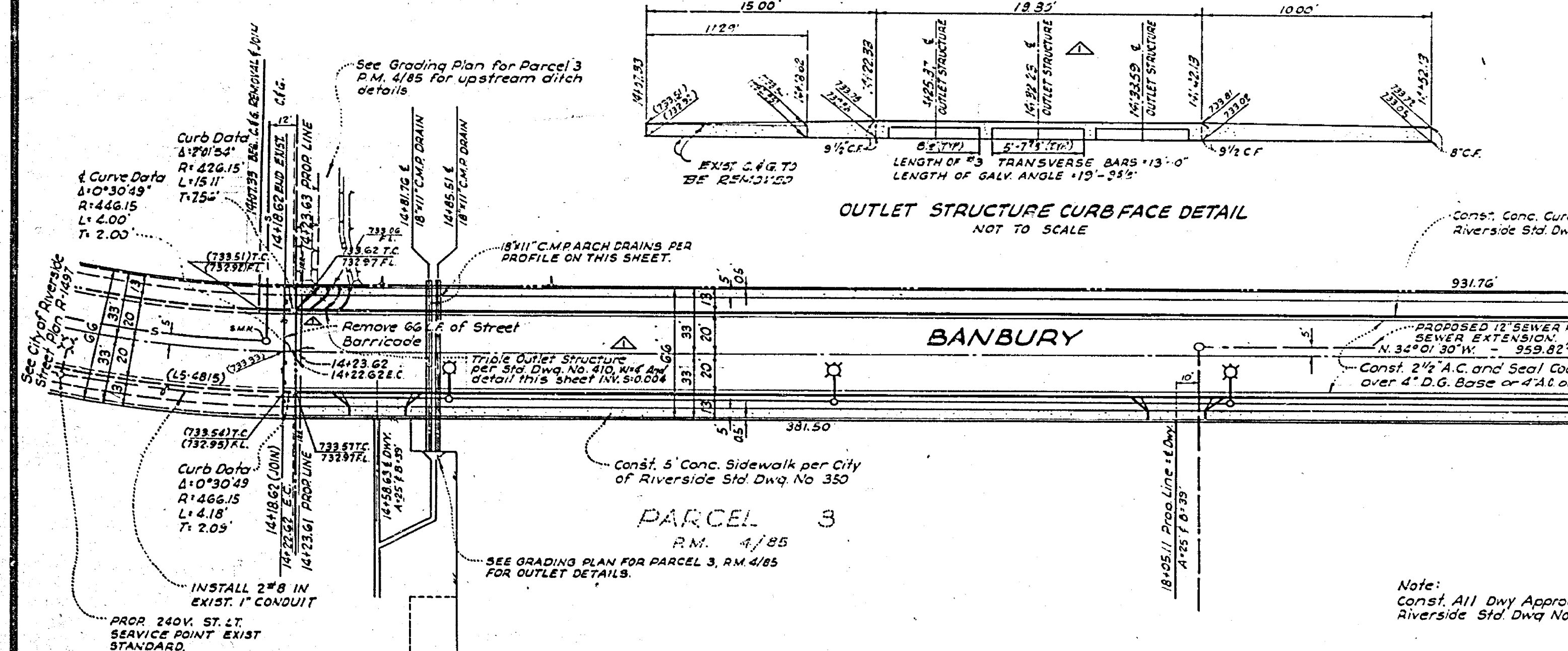
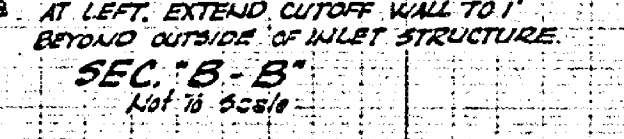
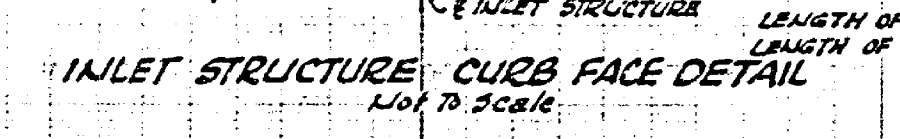
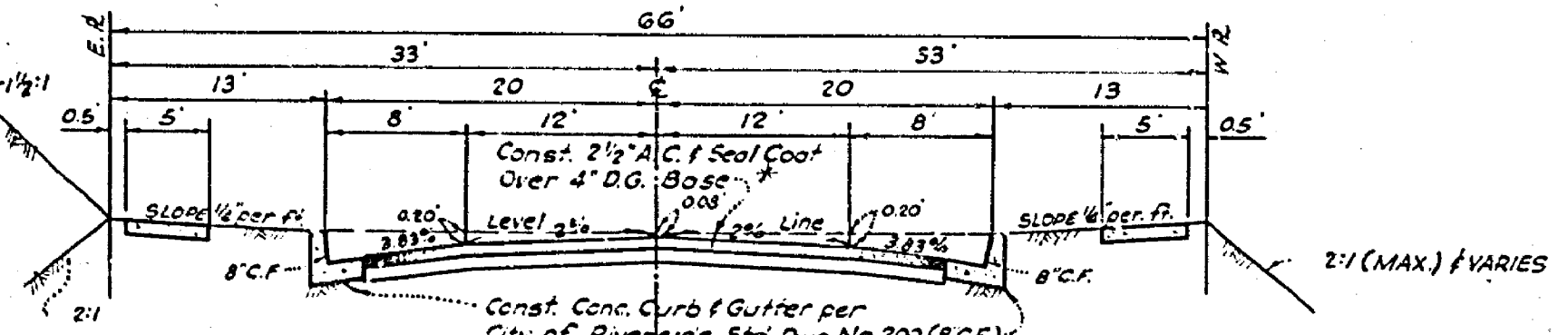


PROFILE SCALE  
HORIZ. 1"=40'  
VERT. 1"=4'



STREET LIGHT STRUCTURE SCHEDULE					
GENERAL INFORMATION					
Symbol	Description	Size	No. Req'd	Plan No.	Item No.
⊕	Concrete Electrolite Standard	24" x 3"	6	U05 800	52
⊕	Horizontal Luminaire	175W	6	"	L1
⊕	Color Corrected Lamp	175W	6	"	LAI
⊕	Photo Control	240V	1000W	6	PC2
⊕	Concrete Pullbox	10"x11"	1	"	PI
⊕	1 Rigid Steel Conduit with 2" x 8 Cu. Body. Codes unless noted otherwise	1"	45500W	N/A	N/A

TRAFFIC SIGNS	
(A)	DIANA AVENUE 10500
(B)	BANBURY DRIVE 3400
(C)	R1 (STOP SIGN) 30" OCTAGON



**PRIVATE ENGINEERS NOTICE TO CONTRACTOR**  
The existence and location of any underground utilities or structures shown on these plans are obtained by a search of available records, to the best of our knowledge there are no existing utilities except as shown on these plans. The contractor is required to take due precautionary measures to protect the utility lines shown and any other lines not of record or not shown on these plans. The contractor shall obtain and have available on the job site, copies of applicable standards shown on these plans and be familiar with their construction.

**GENERAL NOTES:**  
1. Construction shall be done in accordance with the standard specifications for public works construction 1970 edition, and the City of Riverside standard drawings.  
2. It shall be the contractor's responsibility to familiarize himself with the jobsite and any underground facilities shown or not shown on these plans. The engineer will not be responsible for any claims to underground facilities.  
3. All flagged elevations shall be staked in the field by the engineer.  
4. Concrete backfill 18" x 11" CMP pipe arch to 3" over crown of pipe within 22' of E. of Banbury Drive.

**STREET LIGHT - GENERAL CONSTRUCTION NOTES**  
1. Install all street light facilities as shown in accordance with the plans, standard plans and the latest revision of the City of Riverside Public Utilities Department Street Light Specification No. 115.  
2. Contact Public Utilities Street Light Inspector, Phone No. 787-7429, for required inspections.  
3. Excavation for electrolite foundations, pullboxes, and conduits must be done after installation of curbs and gutters, but before installation of sidewalks. Foundation locations shall be approved by the engineer prior to excavation.  
4. \$ 20.00 inspection fees to be paid.  
5. Install a waterproof "in line" fuse holder in both branch conductors in the base of each street light standard. Fuse holder to be "Bussman" HEBB-88 for copper wire with a "Bussman" FNM 5 amp 250 volt fuse or approved equal.  
6. All service points to be connected by City of Riverside.

PREPARED BY:  
NELSON, HAENNELT & ASSOCIATES  
2501 ALDER PLACE  
FULLERTON, CA. 92635  
714-529-7056  
UNDER THE SUPERVISION OF:  
George T. Nelson 12-16-76  
GEORGE T. NELSON R.C.E. 16714

**BENCH MARK:**  
City of Riverside Datum F.B. 62569  
R.N. Nail in the N.W. Curb Return @ Maanilia and Tyler  
ELEV. 740.275

APPROVED FOR STREET LIGHTS  
C.E. ANDY, S.E.  
UTILITIES ENGINEER  
DATE 2-9-73

CITY OF RIVERSIDE, CALIFORNIA  
DEPARTMENT OF PUBLIC WORKS

PLAN AND PROFILE  
**BANBURY DRIVE**  
R-1649  
F.P. 1, 2, 3, 4, 5, 6, 7, 8, 9, 10, 11, 12, 13, 14, 15, 16, 17, 18, 19, 20, 21, 22, 23, 24, 25, 26, 27, 28, 29, 30, 31, 32, 33, 34, 35, 36, 37, 38, 39, 40, 41, 42, 43, 44, 45, 46, 47, 48, 49, 50, 51, 52, 53, 54, 55, 56, 57, 58, 59, 60, 61, 62, 63, 64, 65, 66, 67, 68, 69, 70, 71, 72, 73, 74, 75, 76, 77, 78, 79, 80, 81, 82, 83, 84, 85, 86, 87, 88, 89, 90, 91, 92, 93, 94, 95, 96, 97, 98, 99, 100  
SHEET 1 OF 1  
HORIZ. SCALE: 1" = 40' VERT. SCALE: 1" = 4' FILE NO.