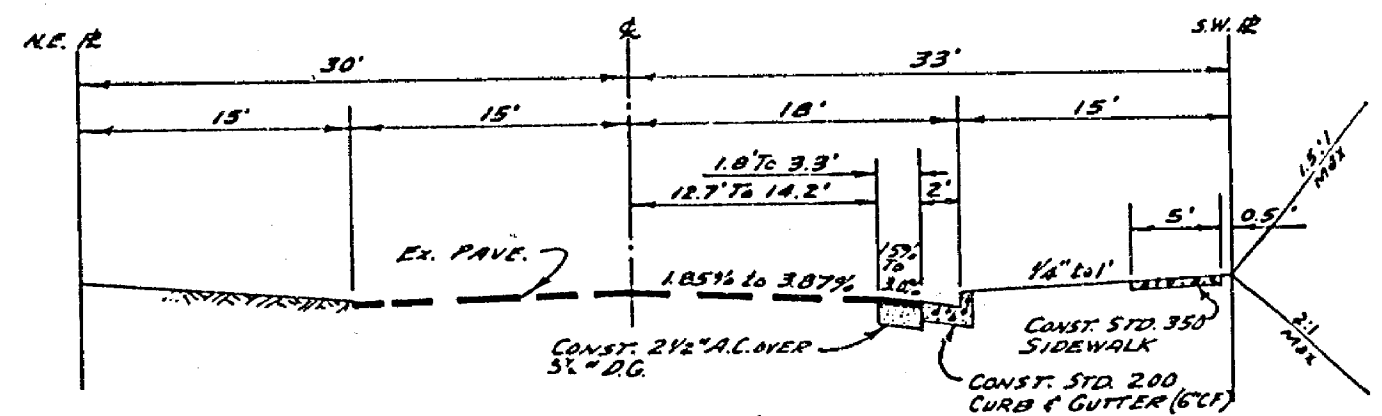


**STREET NAME SIGN SCHEDULE**

(A)	HOOVER STREET	3600
	ORCHARD STREET	7300

**GENERAL NOTES**

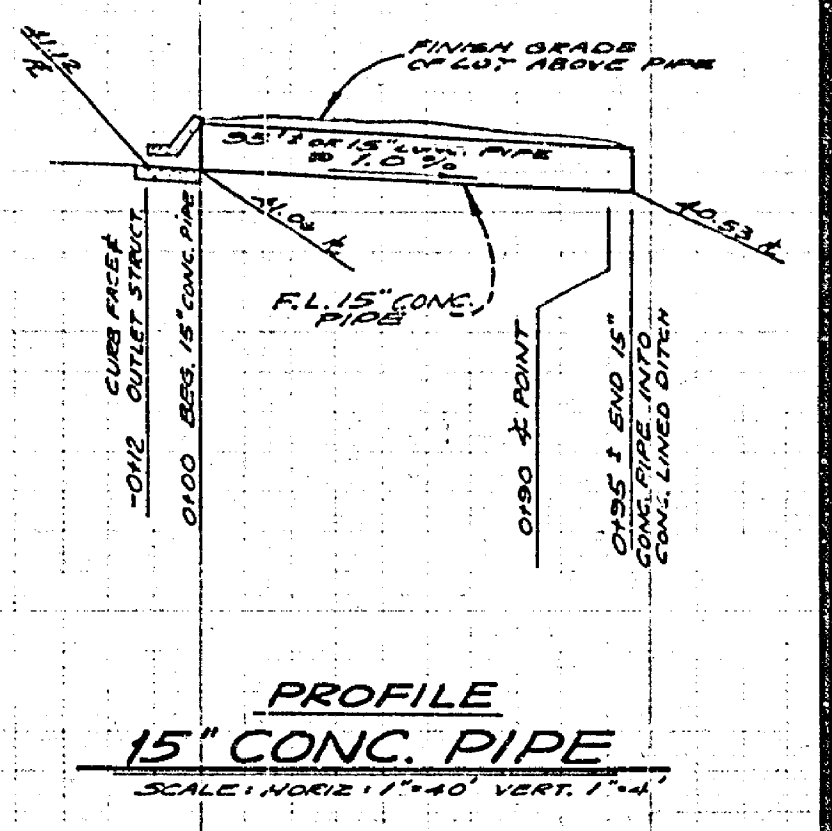
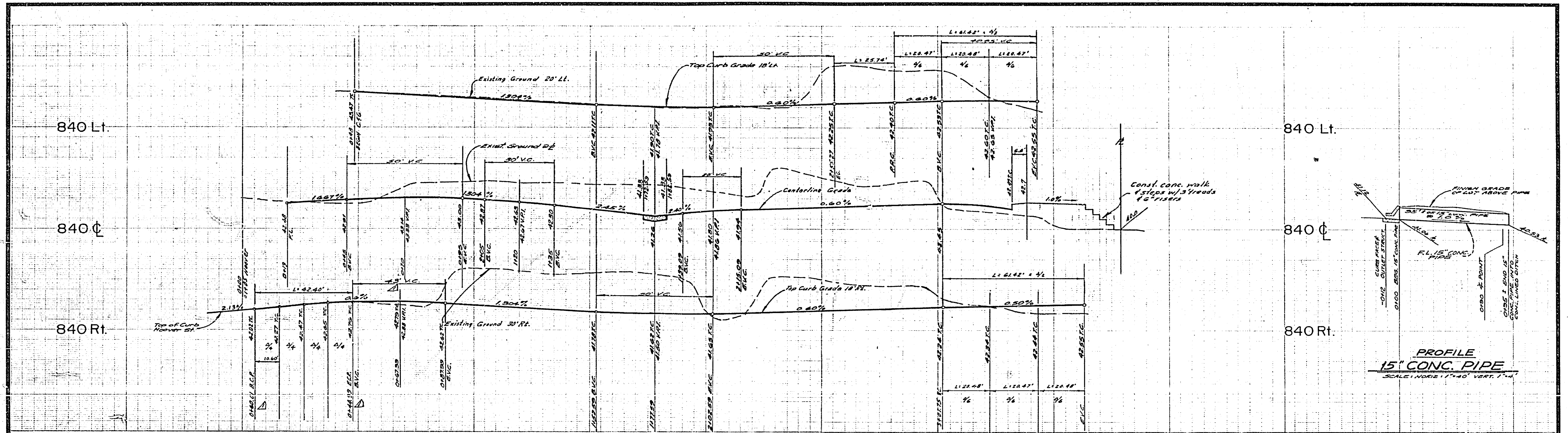
1. Construction shall be in accordance with the standard specifications for Public Works Construction, 1970 Edition of per City of Riverside Standard Drawings.
2. All staged excavations shall be stored in the field by the contractor.
3. The Subdivider shall arrange for a soil test to be made by soils Engineer after the street has been prepared to rough grade. Depth of base material and its paving shall be determined by the City of Riverside Design Standard and Test procedures.
4. Driveways to be located in the field and constructed per City of Riverside Std. No. 302.
5. All Curb Returns shall be constructed per City of Riverside Std. No. 304.



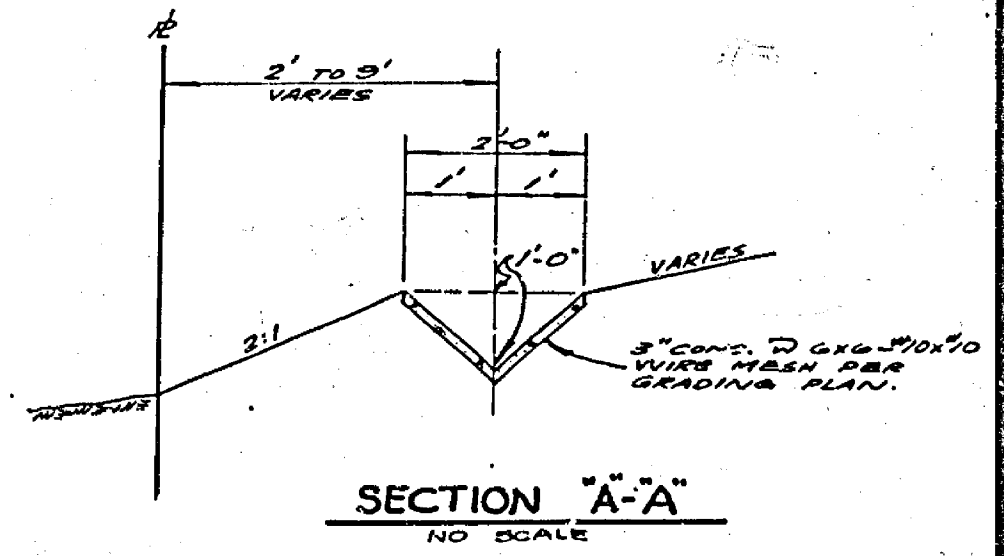
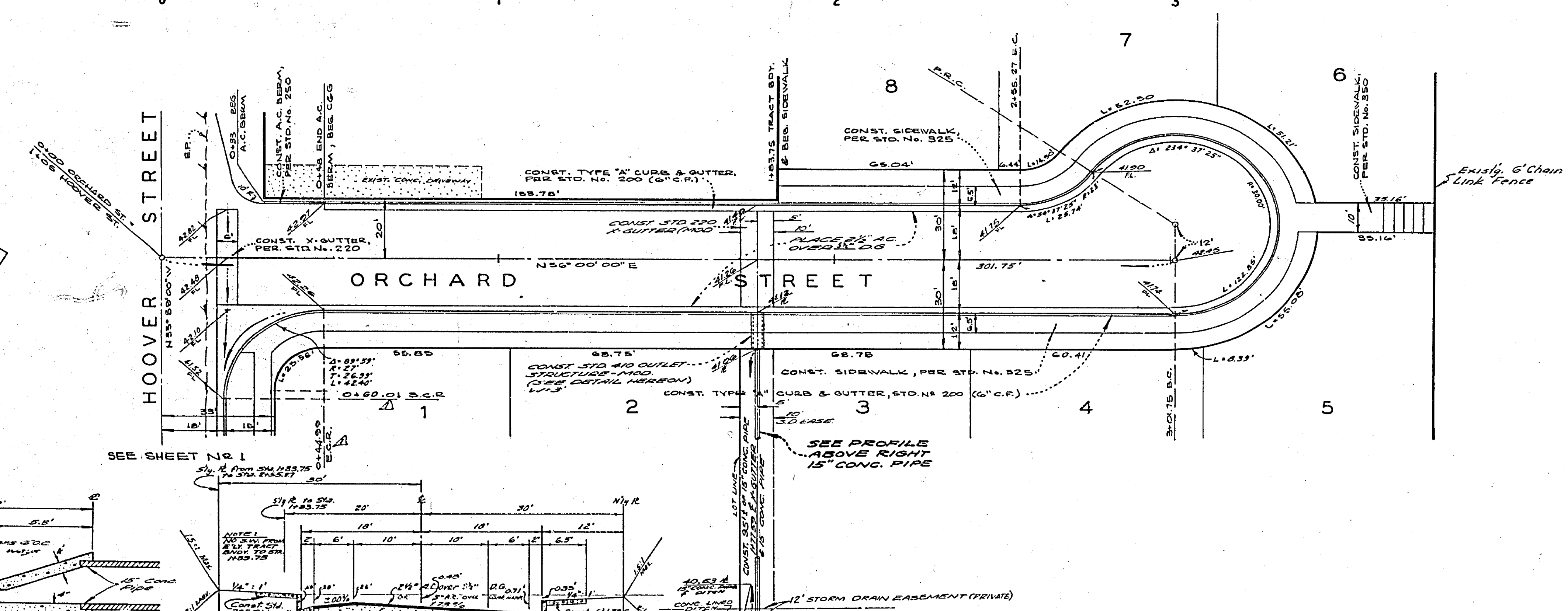
**BENCH MARK**

5/4 in Curb @ N.W. Corner, Marquette & Orchard  
 C&M No. 436143 Elev. = 442.17

ALBERT A. WEBB ASSOCIATES CIVIL ENGINEERS RIVERSIDE, CALIFORNIA APPROVED BY: <i>[Signature]</i> DATE 11/16/71 R.E. No. 2876 W.D. 72-368 FOR: Hoover Street Const. Contract No. 560	CITY OF RIVERSIDE, CALIFORNIA PUBLIC WORKS DEPARTMENT APPROVED BY: <i>[Signature]</i> DATE 11/16/71 PRINCIPAL ENGINEER PARK DEPARTMENT TRAFFIC DIVISION CHIEF PUBLIC WORKS ENGINEER	TRACT NO. 4889 STREET PLAN AND PROFILE <b>HOOVER STREET</b>	ACCOUNT NO. 72-368 DRAWING NUMBER <b>R-1654</b> SHEET 1 OF 2 72-368-A
		DATE 4/13/73 SCALE: HORIZ: 1"=20' VERT.: 1"=4'	

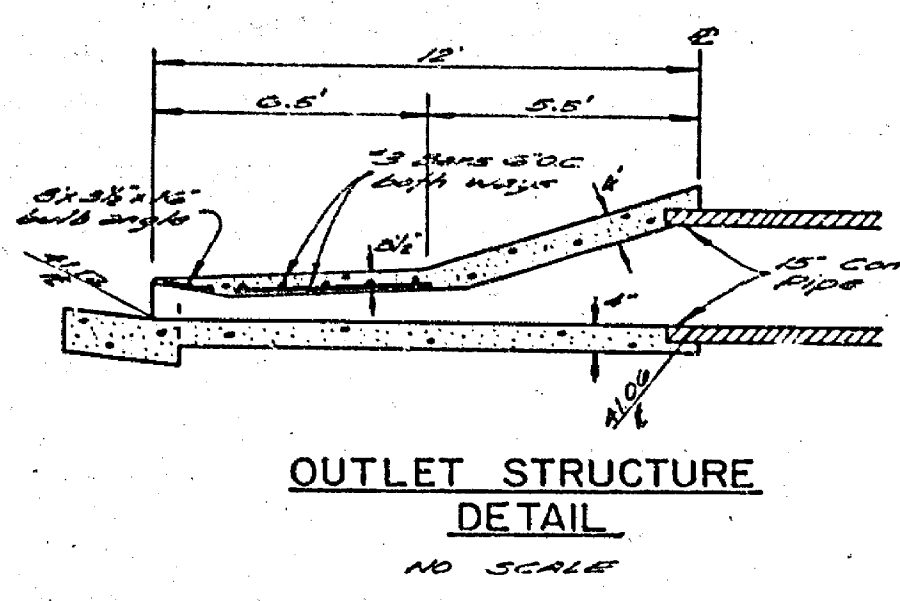


**PROFILE**  
**15" CONC. PIPE**  
SCALE: HORIZ. 1" = 40' VERT. 1" = 1'

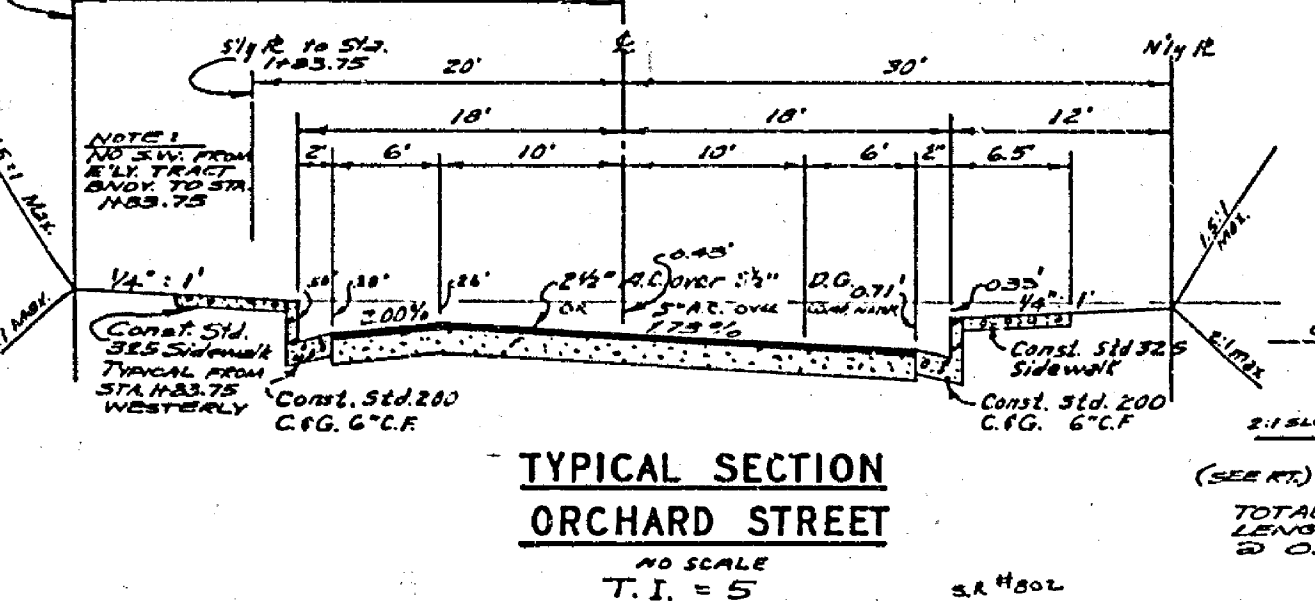


**SECTION "A-A"**  
NO SCALE

**BENCH MARK**  
S/L in curb @ NW corner Mariella & Orchard  
C/R F.S. 4.30/60 Elev. = 842.17



**OUTLET STRUCTURE**  
**DETAIL**  
NO SCALE



**TYPICAL SECTION**  
**ORCHARD STREET**  
NO SCALE  
T.I. = 5'

<b>ALBERT A. WEBB ASSOCIATES</b> CIVIL ENGINEERS RIVERSIDE, CALIFORNIA APPROVED BY: <i>[Signature]</i> DATE: 4/13/73 R.E. No. 3876 W.072-348 FOR: THALOGNE CONST. CONSULTANTS P.B. 520		<b>CITY OF RIVERSIDE, CALIFORNIA</b> PUBLIC WORKS DEPARTMENT APPROVED BY: <i>[Signature]</i> DATE: 4/13/73 PRINCIPAL ENGINEER TRAFFIC DIVISION CHIEF PUBLIC WORKS ENGINEER		<b>TRACT NO. 4889</b> <b>STREET PLAN AND PROFILE</b> <b>ORCHARD STREET</b> SCALE: HORIZ. 1" = 20' ; VERT. 1" = 4' ACCOUNT No. 72-588 DRAWING NUMBER <b>R-1654</b> SHEET <b>2</b> OF <b>2</b> <b>72-368-A</b>	
---	--	---	--	--	--