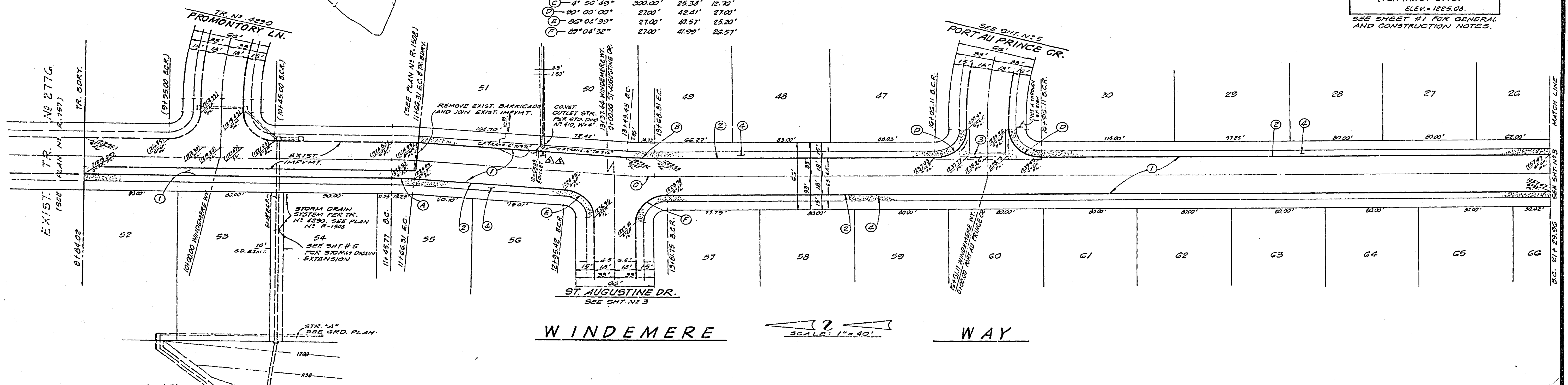


**CURVE DATA**

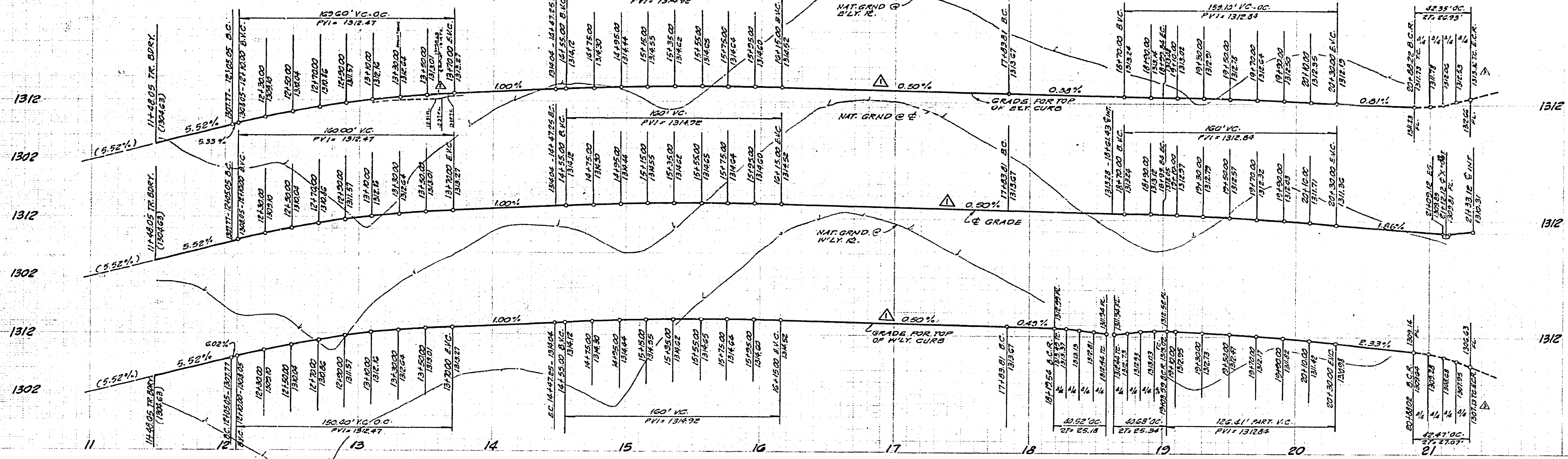
Station	PC	PT	PI	Length	Grade
10+00	10+00	10+55	10+27.5	55'	1.5%
10+55	10+55	11+40	11+17.5	85'	3.90%
11+40	11+40	12+10	11+75	70'	2.73%

**BENCH MARK**  
 CHISELED 9" IN N. END N.W. CURB  
 RETURN RANSON RD & SHAKER  
 (PER TRACT 277G)  
 ELEV. = 1225.03.  
 SEE SHEET #1 FOR GENERAL  
 AND CONSTRUCTION NOTES.



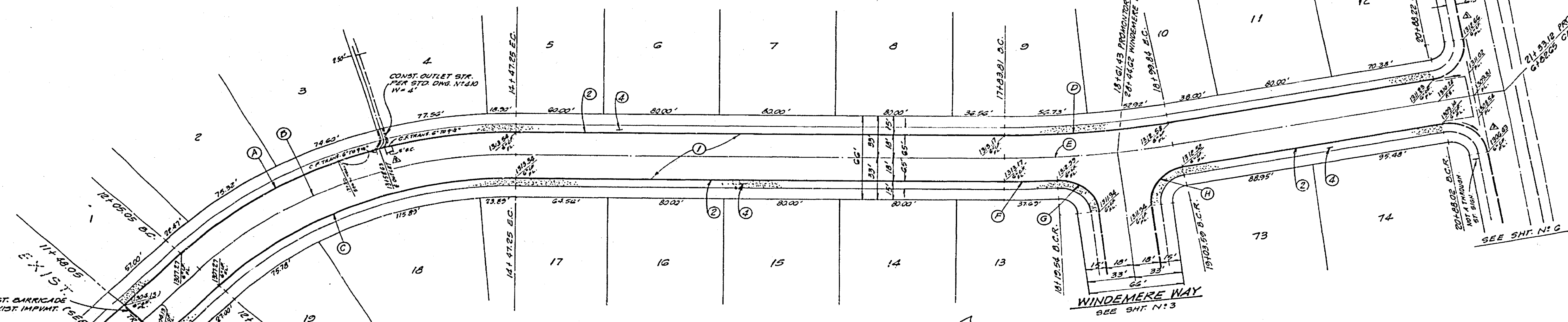
	LINED STREET GRADES TO BALANCE SHEET	5/14/73 JLM	CITY OF RIVERSIDE, CALIFORNIA DEPARTMENT OF PUBLIC WORKS	<b>STREET PLAN AND PROFILE</b> <b>WINDEMERE WAY</b> FROM 115' N.Y. OF PROMONTORY TO 230' S.Y.	PROJECT NO. <b>R-1673</b>
	REVISED CURB RETURN ELEV. AT ST. AUGUSTINE DR.	5/14/73 JLM		APPROVED BY OFFICE ENGINEER PARK DEPARTMENT TRAFFIC DIVISION ASSISTANT CITY ENG.	APPROVED BY DIRECTOR OF PUBLIC WORKS
DESIGNED BY JACK MARONEY R.C.E. 1328	DRAWN BY JLM	CHECKED BY L.L.	DATE 3-24-73	DATE 4/2/73	HORIZ. SCALE: 1" = 40' VERT. SCALE: 1" = 8'





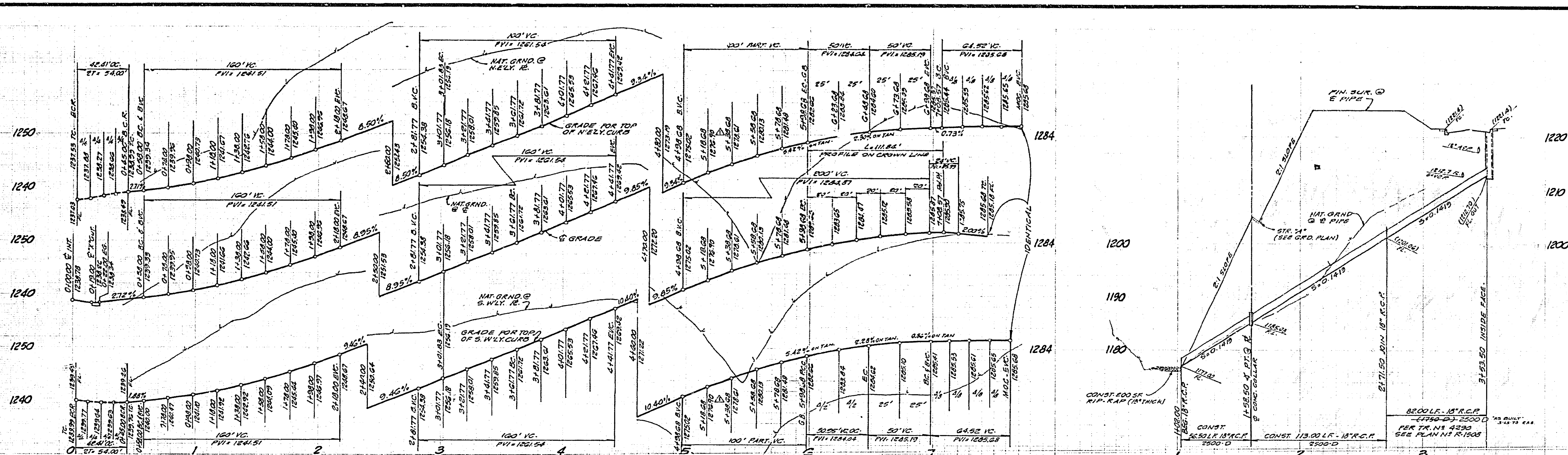
BENCH MARK  
CHISELED 9 IN N. END N.W. CURB  
RETURN RANSON RD. & SHAKER  
(PER TRACT 2772)  
ELEV. 1225.08  
SEE SHEET #1 FOR GENERAL  
AND CONSTRUCTION NOTES

CURVE DATA			
Δ	R	L	T
① 46° 15' 24"	518.00'	256.73'	155.83'
② 46° 15' 24"	300.00'	242.20'	124.14'
③ 46° 15' 24"	282.00'	227.07'	120.45'
④ 11° 04' 48"	532.00'	112.55'	58.45'
⑤ 11° 04' 48"	600.00'	115.03'	58.20'
⑥ 3° 24' 42"	618.00'	35.20'	
⑦ 65° 59' 58"	27.00'	40.92'	25.18'
⑧ 65° 19' 56"	27.00'	40.68'	25.34'



PROMONTORY LANE SCALE: 1" = 40'

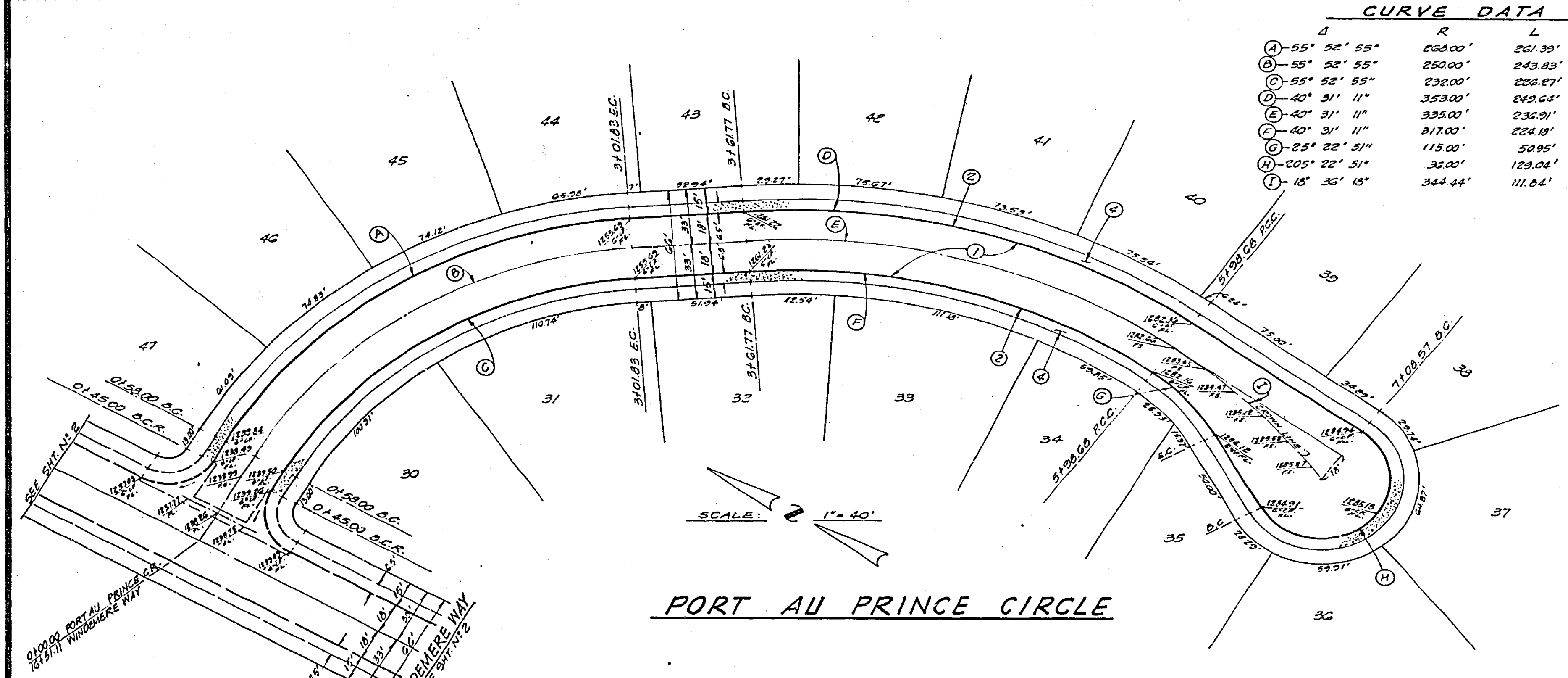
	LOWERED STREET GRADES TO RELEASE EXIST. REVISIONS: 1-3-73, 1-3-73, 1-3-73 APPROVED BY: Jack Mahoney, 3-24-73 DATE	CITY OF RIVERSIDE, CALIFORNIA DEPARTMENT OF PUBLIC WORKS APPROVED BY: William D. Anderson, 4/9/73 DATE	STREET PLAN AND PROFILE <b>PROMONTORY LANE</b> FROM 1140' S. ELY. OF WINDEMERE TO 2135' S. ELY. <b>TRACT NO 4111</b>	PROJECT NO. <b>R-1673</b> SHEET 4 OF 6 FILE NO.
	DESIGNED BY: JACK MAHONEY REG. 1320 DRAWN BY: [ ] CHECKED BY: [ ]	APPROVED BY: [ ] OFFICE ENGINEER PARK DEPARTMENT TRAFFIC DIVISION ASSISTANT CITY ENG.	APPROVED BY: [ ] DIRECTOR OF PUBLIC WORKS	HORIZ. SCALE: 1" = 40' VERT. SCALE: 1" = 8'



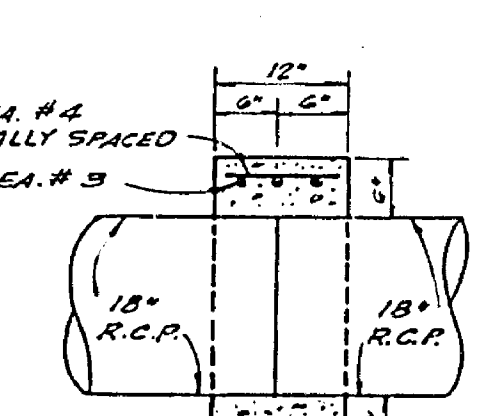
**CURVE DATA**

Curve	Angle	R	L	T
A	55° 52' 55"	628.00'	201.39'	152.30'
B	55° 52' 55"	250.00'	243.83'	142.15'
C	55° 52' 55"	232.00'	228.27'	131.91'
D	40° 31' 11"	353.00'	243.64'	130.29'
E	40° 31' 11"	335.00'	235.91'	123.65'
F	40° 31' 11"	317.00'	224.18'	117.01'
G	25° 22' 51"	115.00'	50.95'	
H	205° 22' 51"	32.00'	123.04'	
I	18° 35' 18"	324.44'	111.84'	56.42'

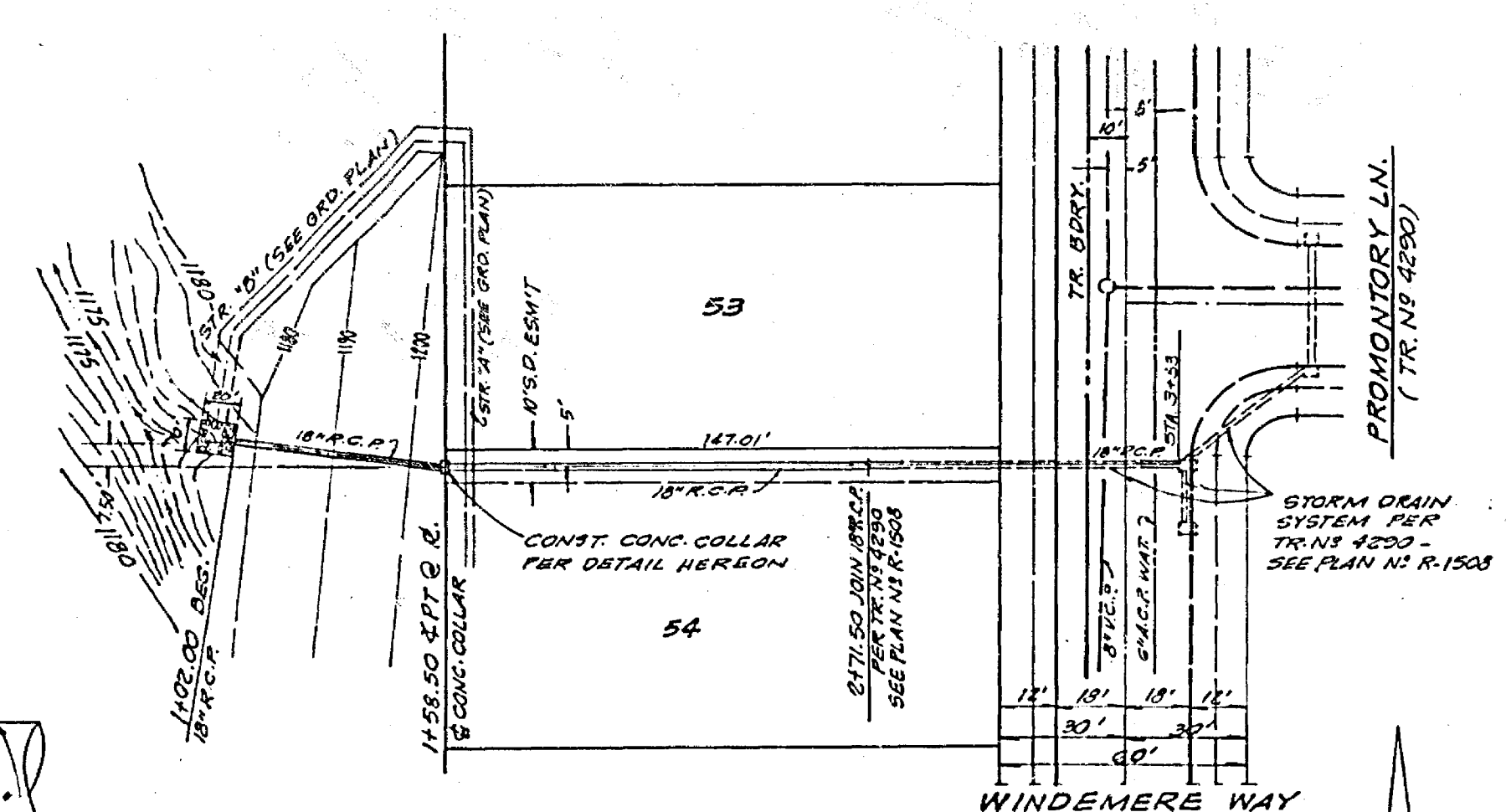
**BENCH MARK**  
 CHISELED 8 IN N. END N.W. CURB  
 RETURN KIMMON RD & BAKER  
 (PER TRACT 4111)  
 ELEV. = 1225.08  
 SEE SHEET # 1 FOR GENERAL  
 AND CONSTRUCTION NOTES



**PORT AU PRINCE CIRCLE**



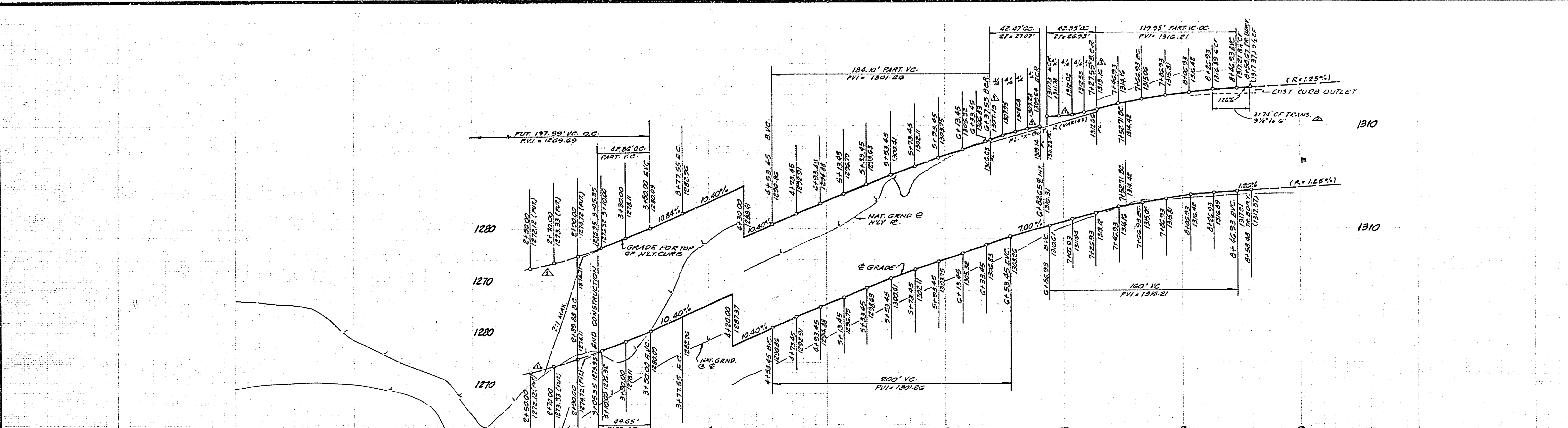
**CONC. COLLAR DET.**  
 SCALE: 1/4" = 1'-0"



**STORM DRAIN EXTENSION**

APPROVED FOR STORM DRAIN  
 CONSTRUCTION ONLY BY:  
 [Signature]  
 DATE: 2/7/73

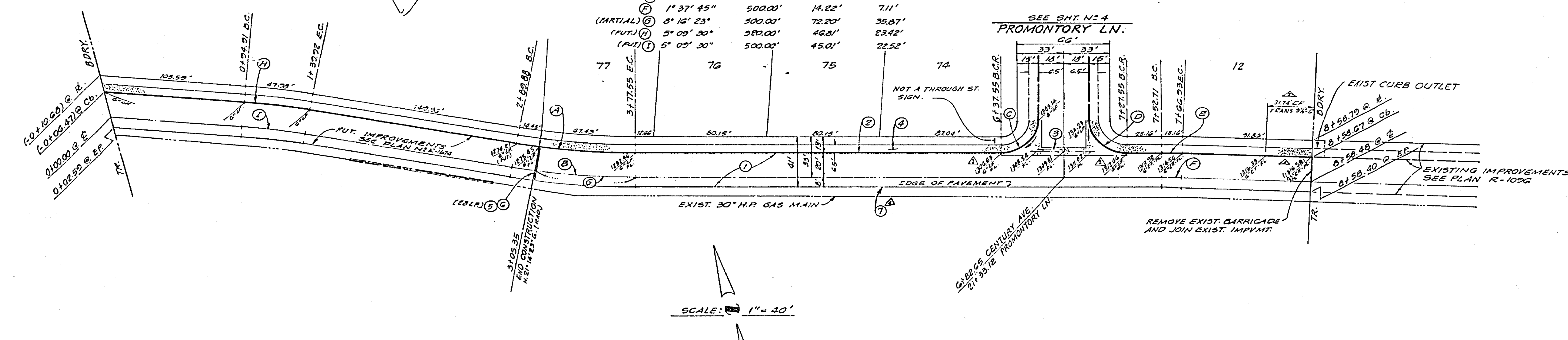
 APPROVED BY: [Signature] JACK MANONBY R.C.E. HJES DATE: 2-11-73	REVISIONS DESIGNED BY: _____ DRAWN BY: _____ CHECKED BY: _____	CITY OF RIVERSIDE, CALIFORNIA DEPARTMENT OF PUBLIC WORKS APPROVED BY: [Signature] DATE: 4/9/73	<b>STREET PLAN AND PROFILE</b> <b>PORT AU PRINCE CIRCLE</b> FROM WINDEMERE WAY TO 710' S. ELY. <b>STORM DRAIN</b> FROM CC 50' W. TO 235' 00" W. OF ST 6 <b>TRACT NO 4111</b> HORIZ. SCALE: 1" = 40' VERT. SCALE: 1" = 8'	PROJECT NO. <b>R-1673</b> SHEET 5 OF 6 FILE NO.
	DESIGNED BY: _____ DRAWN BY: _____ CHECKED BY: _____	APPROVED BY: [Signature] DATE: 4/9/73	STREET PLAN AND PROFILE <b>PORT AU PRINCE CIRCLE</b> FROM WINDEMERE WAY TO 710' S. ELY. <b>STORM DRAIN</b> FROM CC 50' W. TO 235' 00" W. OF ST 6 <b>TRACT NO 4111</b> HORIZ. SCALE: 1" = 40' VERT. SCALE: 1" = 8'	PROJECT NO. <b>R-1673</b> SHEET 5 OF 6 FILE NO.



**CURVE DATA**

Curve	Δ	R	L	T
(A)	10° 02' 45"	400.00'	84.16'	42.18'
(TOTAL) (B)	10° 02' 45"	500.00'	67.67'	43.04'
(C)	20° 07' 43"	27.00'	42.47'	27.07'
(D)	20° 52' 17"	27.00'	42.35'	26.93'
(E)	1° 37' 45"	520.00'	14.79'	7.39'
(FUT.) (F)	5° 09' 30"	500.00'	46.81'	23.42'
(PART.) (G)	5° 09' 30"	500.00'	45.01'	22.52'

**BENCH MARK**  
 CHISELED IN N. END N.W. CURB  
 RETURN RANSON RD. & SHAKER  
 (PER TRACT 2776)  
 ELEV. = 1225.08  
 SEE SHEET # 1 FOR GENERAL  
 AND CONSTRUCTION NOTES



**CENTURY AVENUE**

	LOWERED FROM ELEV. ADDED FROM 11/15/73 REVISED TO ELEV. AT D.C.R. 11/15/73 ADDED C.F. TRANS. 11/15/73 ADDED AC BERM 11/15/73	CITY OF RIVERSIDE, CALIFORNIA DEPARTMENT OF PUBLIC WORKS	<b>STREET PLAN AND PROFILE</b> <b>CENTURY AVENUE</b> FROM 753' N.W. OF PROMONTORY LN. TO 176' E.D.	PROJECT NO. <b>R-1673</b>
	APPROVED BY: Jack Mahoney JACK MAHONEY ROE 11225	DATE 3-24-73	APPROVED BY: William D. Anderson DIRECTOR OF PUBLIC WORKS	<b>TRACT No 4111</b>
DESIGNED BY: DRAWN BY: CHECKED BY:		ASSISTANT CITY ENG.	DATE 4/2/73	FILE NO.