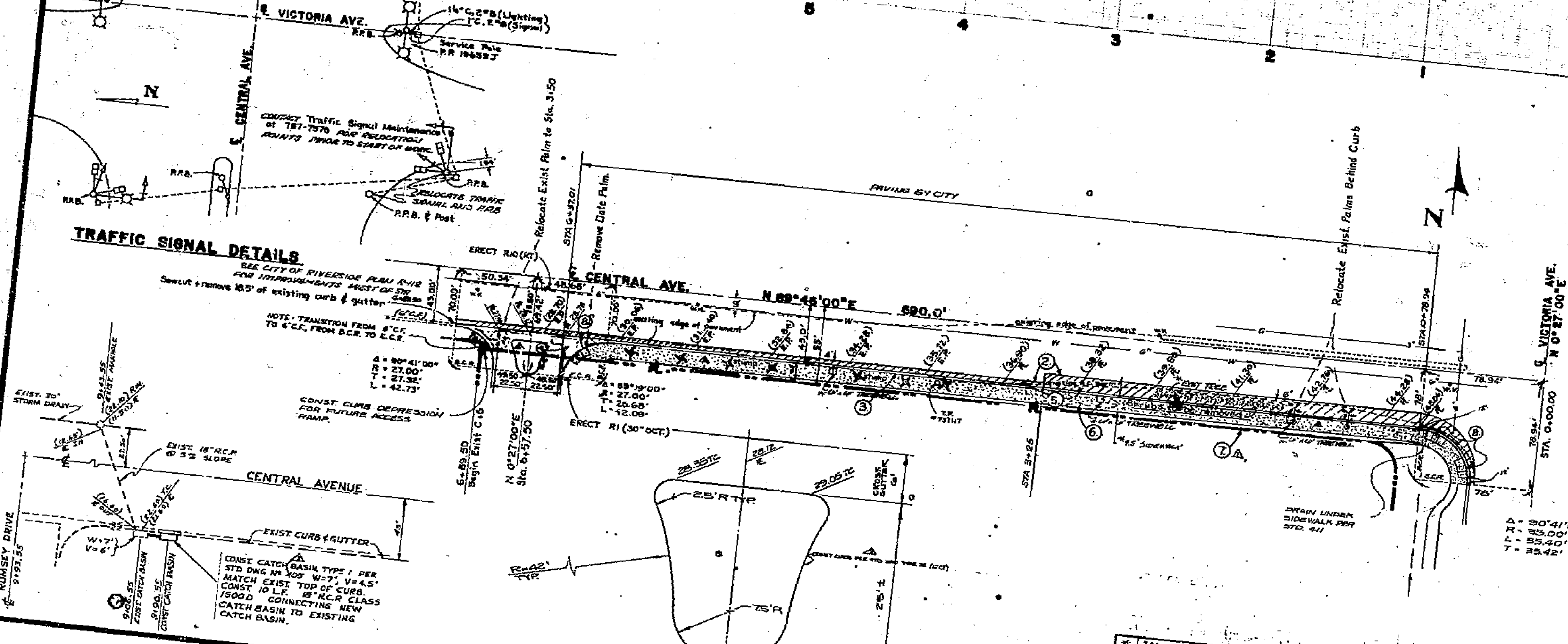


**TYPICAL SECTION OF CENTRAL AVE.**  
 71+7  
 South Curb  
 Developer to Grade  
 572.00 to 574.25  
 574.25 to 576.50

- Construction Notes:**
- Construction shall be in accordance with Standard Specifications for Public Works Construction, 1970 Edition, and City of Riverside Standard Drawings.
  - Sawcut existing A.C. pavement.
  - Const. Curb & Gutter as per Std. Drwg. No. 200 to Sta. 7+15.24 with @ intersecting Central Ave. @ Sta. 6+57.50.
  - Const. 4" A.C. over 12" D.6 Base; feather smooth join.
  - Const. sidewalk as per Std. Drwg. No. 325.
  - Howse wall to be const. outside RW.
  - CONST. CURB RETURNS FOR STD. DWG. 17-304.



**TRAFFIC SIGNAL DETAILS**

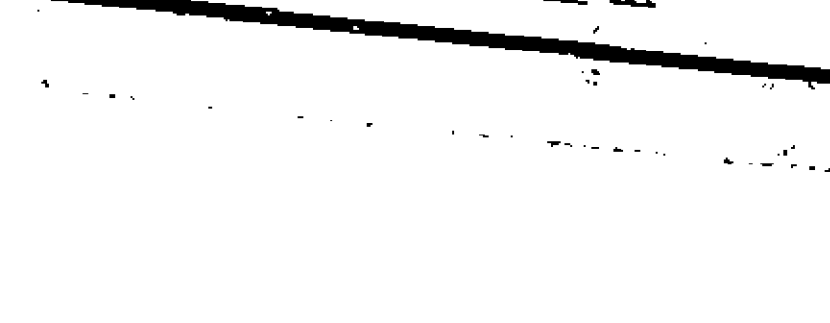
SEE CITY OF RIVERSIDE PUBLIC WORKS DEPARTMENT FOR TRAFFIC SIGNAL MAINTENANCE AT 781-7576 FOR REDUCED MOUNTS PRIOR TO START OF WORK.  
 16" C.S.B. (Lighting)  
 T.C. T. (Signal)  
 Service Pole  
 P.R. 106887  
 Relocate Traffic Signal and R.R.B.  
 R.R.B. & Post  
 Relocate Exist. Pole to Sta. 3+50  
 37A G+27.0'  
 Remove Old Pole  
 ERECT R1 (30" OCT.)  
 ERECT R1 (30" OCT.)  
 N 0°27'00"E  
 Sta. 5+57.50

NOTE: TRANSITION FROM 8" C.F. TO 6" C.F. FROM S.C.R. TO E.C.R.

CONST. CURB DEPRESSION FOR FUTURE ACCESS RAMP.  
 4 = 90°41'00"  
 R = 21.00'  
 T = 27.30'  
 L = 42.73'

EXIST. 18" R.C.P. @ 2% SLOPE  
 W-7' V-6'  
 CONST. CATCH BASIN TYPE 1 PER STD. DWG. NO. 202 W-7' V-6.5'  
 MATCH EXIST. TOP OF CURB.  
 1600'S CONNECTING NEW CATCH BASIN TO EXISTING CATCH BASIN.

**ENLARGED MEDIAN DETAIL**



PREPARED UNDER THE SUPERVISION OF:  
 PHILIP A. Gustafson R.C.E. No. 13875

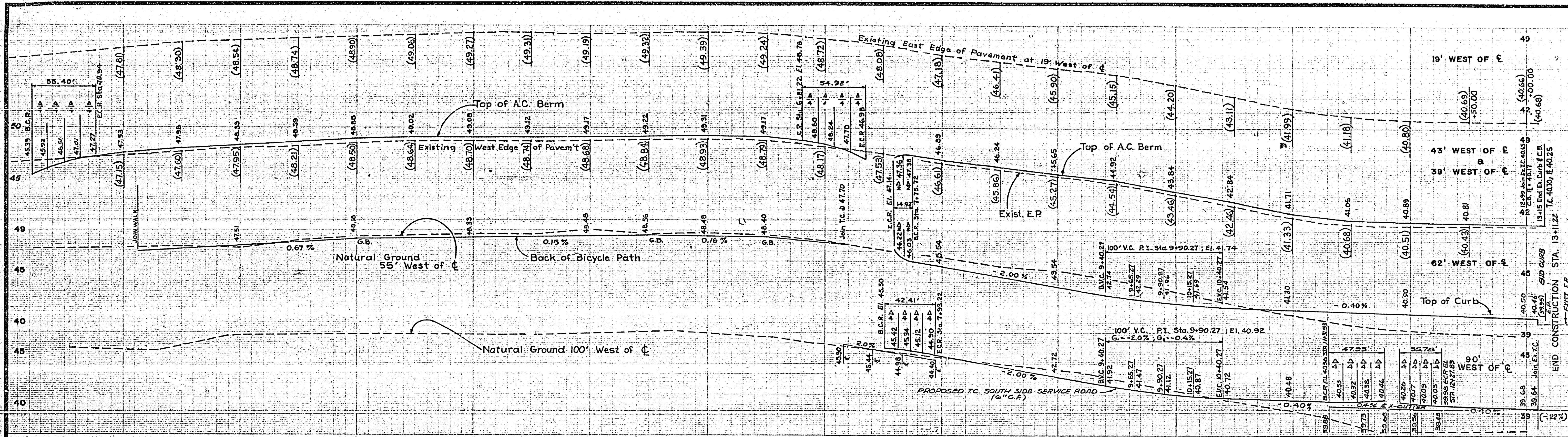
**CITY OF RIVERSIDE, CALIFORNIA**  
**DEPARTMENT OF PUBLIC WORKS**

APPROVED BY: [Signature]  
 DATE: 7/16/73

DESIGNED BY: [Signature]  
 DRAWN BY: [Signature]  
 CHECKED BY: [Signature]

**CENTRAL AVE.**  
 South side of C.  
 From Victoria Ave.  
 to 690.0 feet West  
 on E.

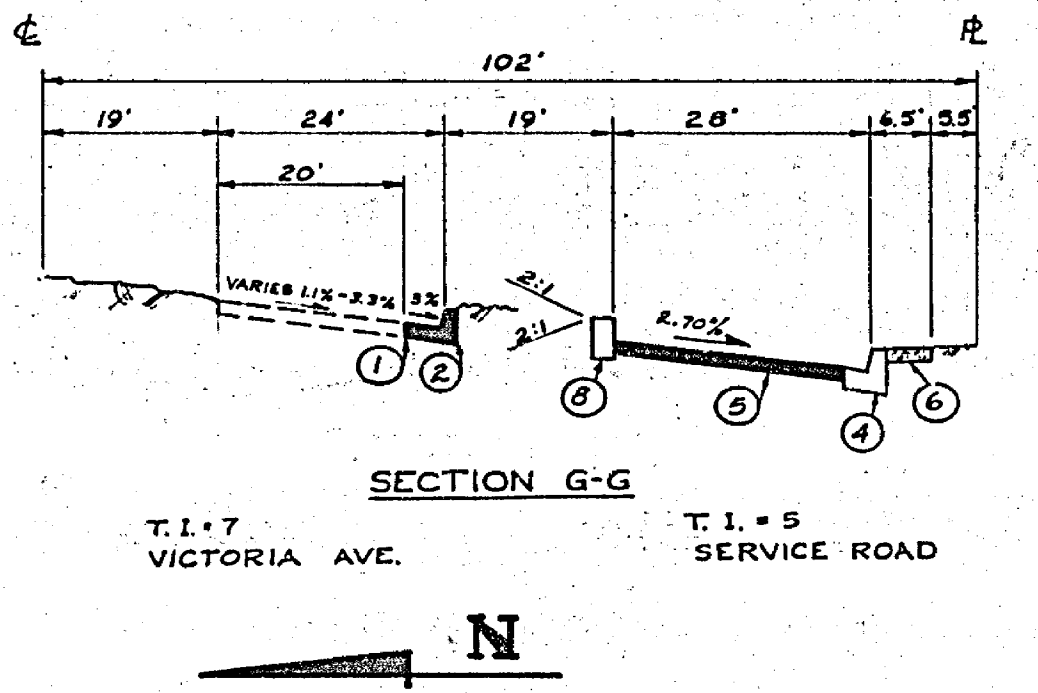
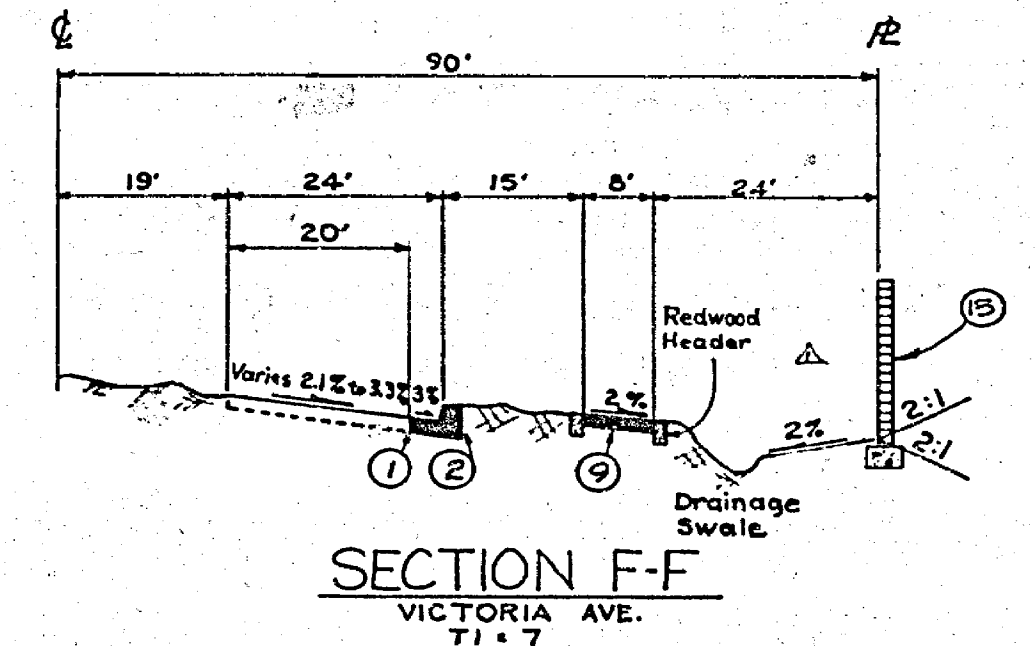
PROJECT NO. R-1684  
 SHEET 1 OF 3  
 FILE NO.



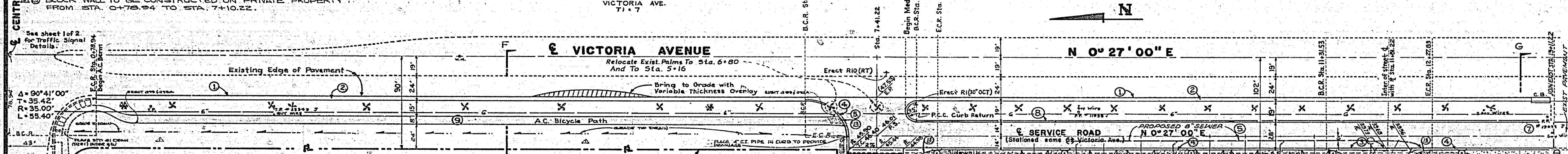
**CONSTRUCTION NOTES (cont.)**

12. THE DEVELOPER SHALL ARRANGE FOR A SOIL TEST BY A SOILS ENGINEER TO BE TAKEN WHEN THE STREETS HAVE BEEN PREPARED FOR ROUGH GRADE. DEPTH OF BASE MATERIAL AND A.C. PAVING SHALL BE DETERMINED BY THE CITY OF RIVERSIDE DESIGN STANDARDS AND TEST METHODS.

13. CONST. CURB RETURNS PER STD. DWG. No. 304.

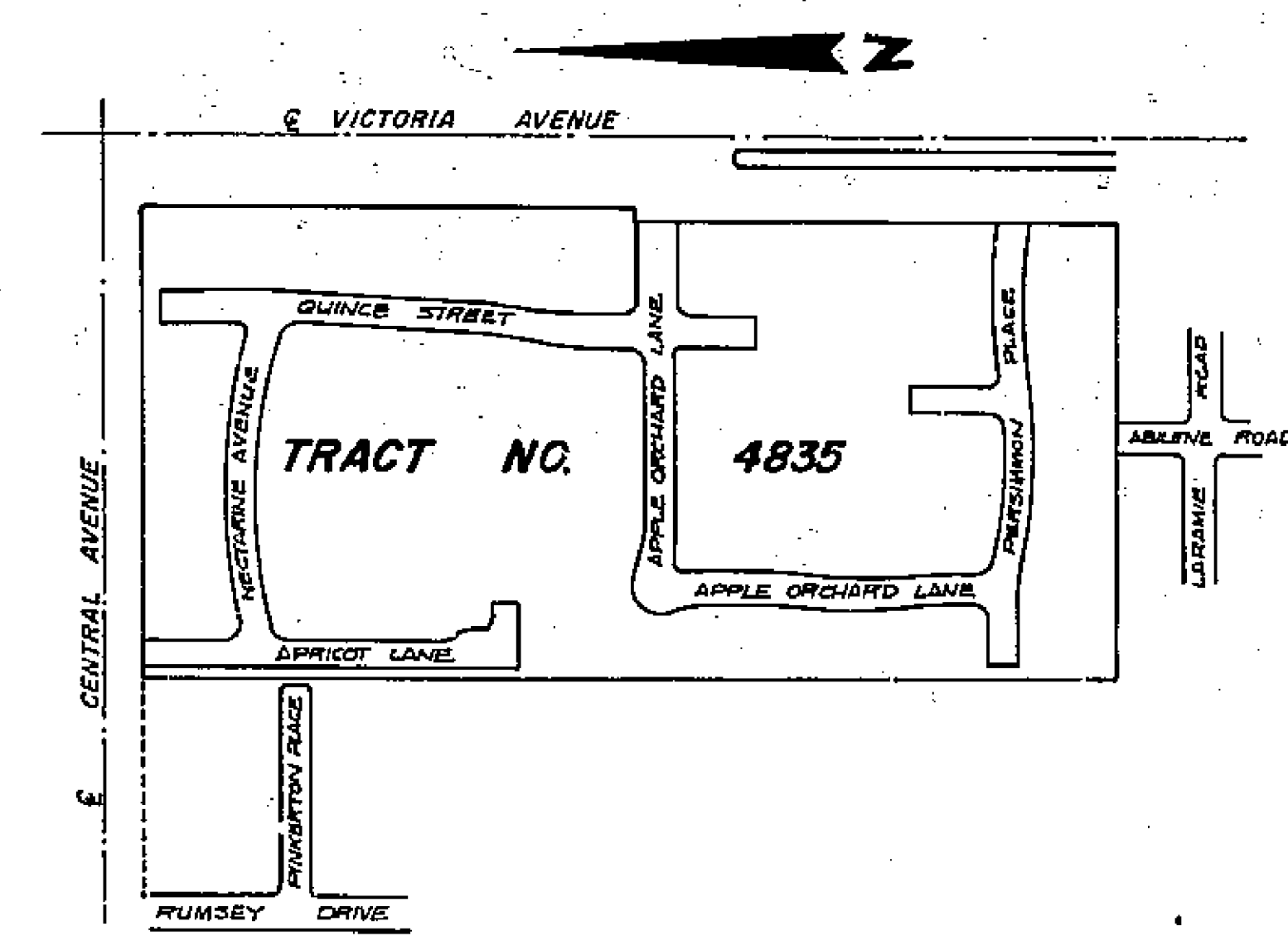
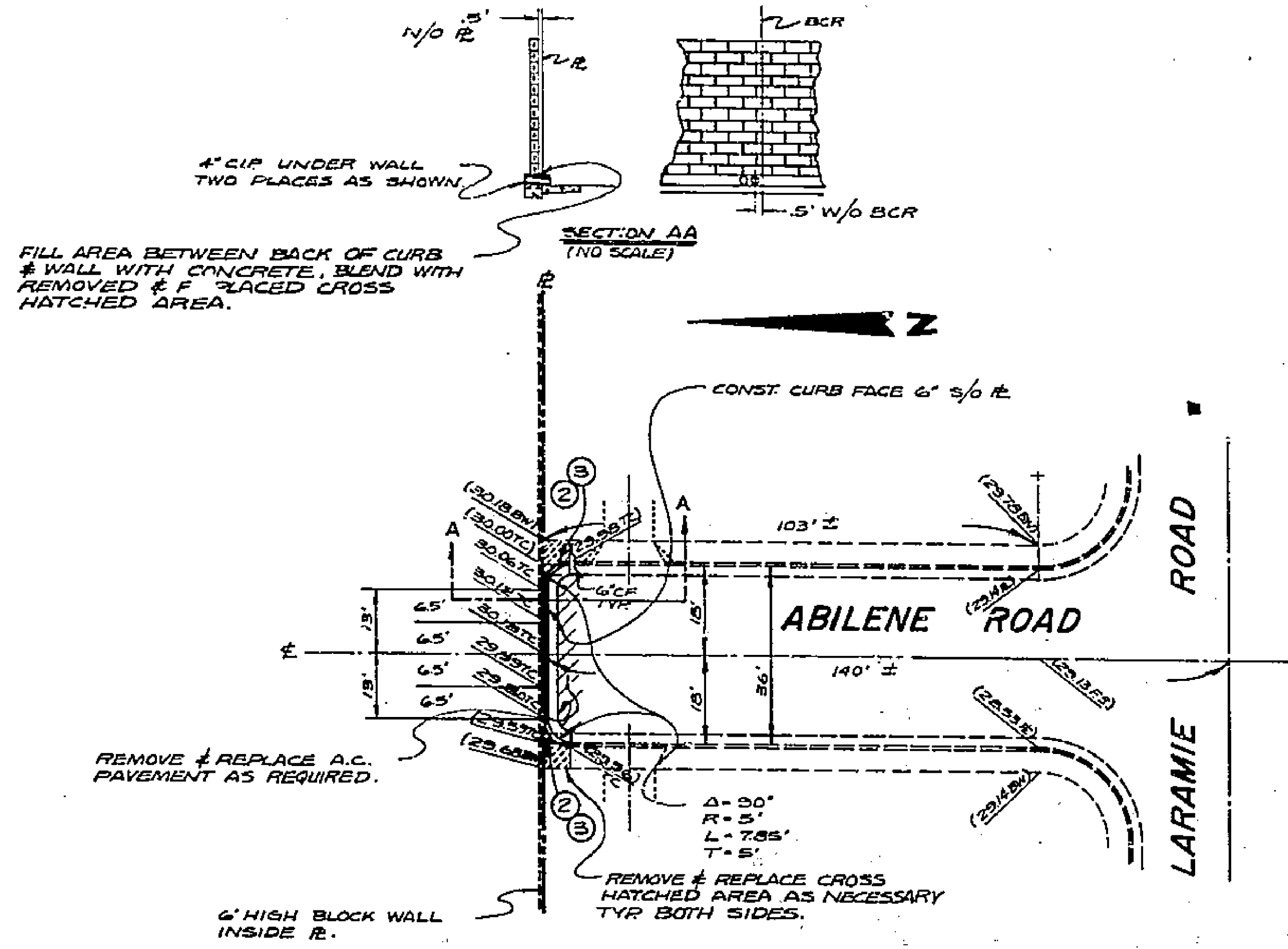
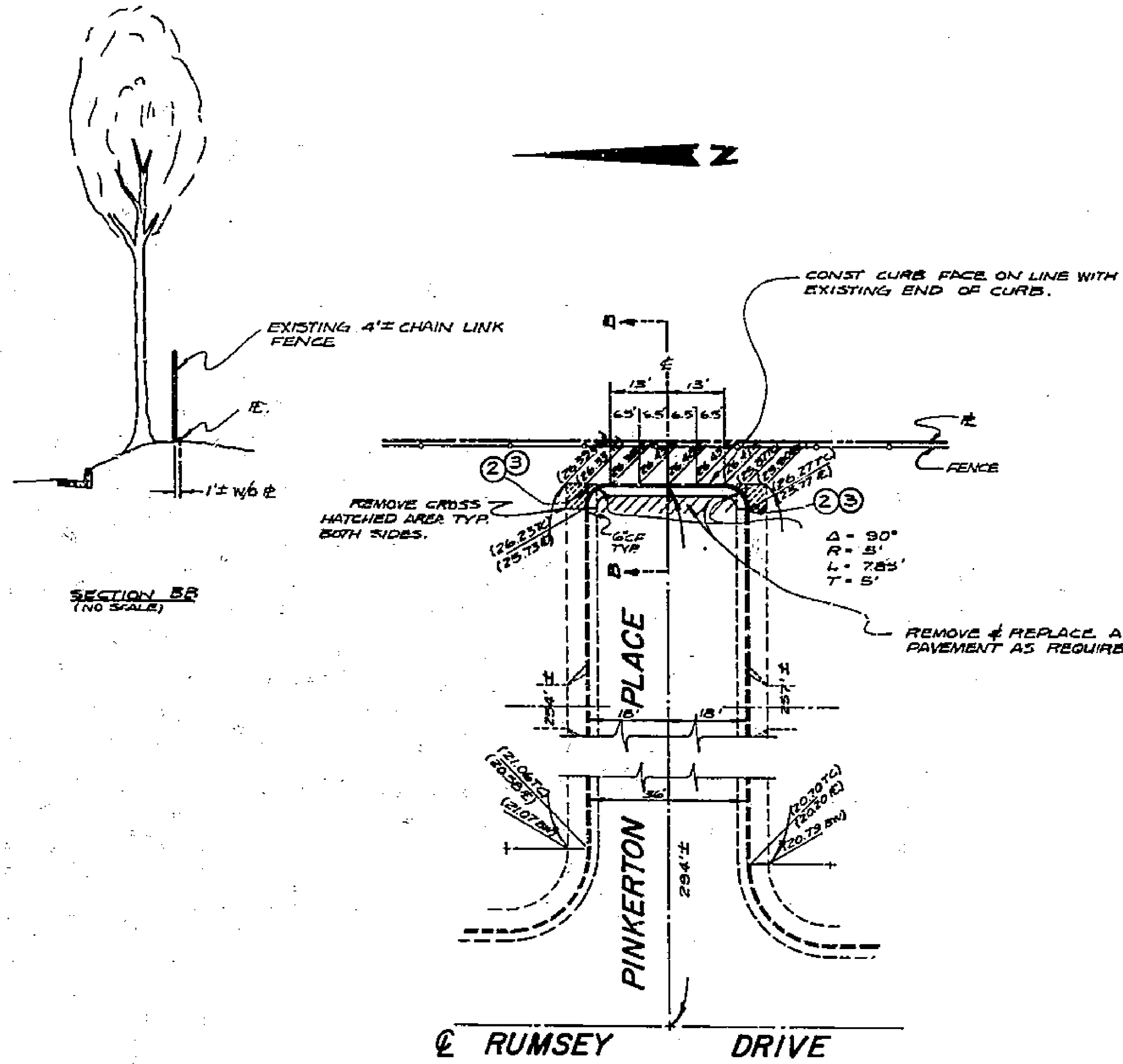


B.M. Brass disk stamped (H-7-C) capped at the intersection of Central Ave. and Victoria Ave. F.D. 717/73 Elev. 946.376



- CONSTRUCTION NOTES:** Construction shall be in accordance to Standard Specifications for Public Works Construction, 1970 Edition, and City of Riverside Std. Drwg.
- Saw-cut existing edge of pavement 39 feet right of centerline from Sta. 0+77.94 to Sta. 12+99.00
  - Place 4" A.C. over 6" DO to join existing pavement and an A.C. Berm (Std. Dwg. No. 250) on Victoria Ave. within the following bounds: From Sta. 0+78.94 to 6+81.22, From Sta. 7+75.22 to 12+99.00
  - Construct Cross Gutters and Aprons as per Std. Dwg. No. 220 as shown along service road at Sta. 7+41.22 and also at Sta. 11+71.22.
  - Construct concrete Curb and Gutter as per Std. Dwg. No. 200 within the following bounds: from B.C.R. Sta. 6+81.22 to a location 24' beyond the E.C.R. from E.C.R. Sta. 7+93.22 to B.C.R. Sta. 11+21.55 on the west side of the service road. (leave openings for drive-ways) from E.C.R. Sta. 12+15.84 to existing curb.
  - Place 2 1/2" A.C. over 6" DO at service road entrance from Victoria Ave. down to the existing pavement on the service road at the end of construction.
  - Construct a sidewalk as per Std. Dwg. No. 325 on the west side of the service road and join existing sidewalk.
  - The Contractor is responsible for cooperating with the local electric company for relocating the guy wire at P.R. #19071 J.
  - Construct concrete Curb as per Std. Dwg. No. 200 on the East edge of the service road from Sta. 7+75.72 to the End of Construction.
  - Construct 2 1/2" of A.C. on compacted native soil for the bicycle path as located in above plan.
  - Saw-cut and join existing pavement; also join existing T.C. and sidewalk.

Prepared under the supervision of: Philip A. Gustafson, R.C.E. No. 13875 Date		<b>CITY OF RIVERSIDE, CALIFORNIA</b> <b>DEPARTMENT OF PUBLIC WORKS</b> APPROVED BY: [Signature] OFFICE ENGINEER DATE: 7/10/73		<b>VICTORIA AVE.</b> West of Centerline From Central Ave. to 1310.0 feet South on Centerline		PROJECT NO. <b>R-1684</b> SHEET 2 OF 3
DESIGNED BY	DRAWN BY	CHECKED BY	DATE	TR. 4835	HORIZ. SCALE: 1" = 40' VERT. SCALE: 1" = 4' FILE NO.	



- CONSTRUCTION NOTES:**
- CONSTRUCTION SHALL BE IN ACCORDANCE WITH STANDARD SPECIFICATIONS FOR PUBLIC WORKS CONSTRUCTION 1970 EDITION, & CITY OF RIVERSIDE STANDARD DRAWINGS.
  - SAW CUT & REMOVE 5' OF EXISTING CURB & GUTTER AT THE END OF EXISTING STREET.
  - CONSTRUCT CURB & GUTTER AS PER STD. DWG. # 200, 6" CURB FACE.

BENCH MARK:  
BRASS DISK STAMPED (H-7-C) CAPPED AT THE INTERSECTION OF CENTERLINE OF CENTRAL AVENUE AND CENTERLINE OF VICTORIA AVENUE.  
F.B. 717/13 ELEVATION = 846.573

PREPARED UNDER THE SUPERVISION OF: <i>Philip A. Gustafson</i> 30 Dec 73 PHILIP A. GUSTAFSON RCE 13875 DATE		* AS BUILT * E.J.K. #12174	CITY OF RIVERSIDE, CALIFORNIA DEPARTMENT OF PUBLIC WORKS	END OF STREET IMPROVEMENT PINKERTON PLACE & ABILENE RD. TRACT 4835	PROJECT NO. <b>R-1684</b>
APPROVED BY OFFICE ENGINEER PARK DEPARTMENT TRAFFIC DIVISION ASSISTANT CITY ENG.	BY DATE DATE 8/20/73	APPROVED BY DIRECTOR OF PUBLIC WORKS DATE 8/20/73	HORIZ. SCALE: 1" = 20' VERT. SCALE: 1" = 20'	SHEET 3 OF 3	FILE NO.