

# RIVERSIDE CALIFORNIA



PUBLIC WORKS DEPARTMENT

## GIBSON STREET BUCHANAN STREET JACKSON STREET IMPROVEMENTS AT A.T. & S.F. CROSSING

### CONSTRUCTION LEGEND

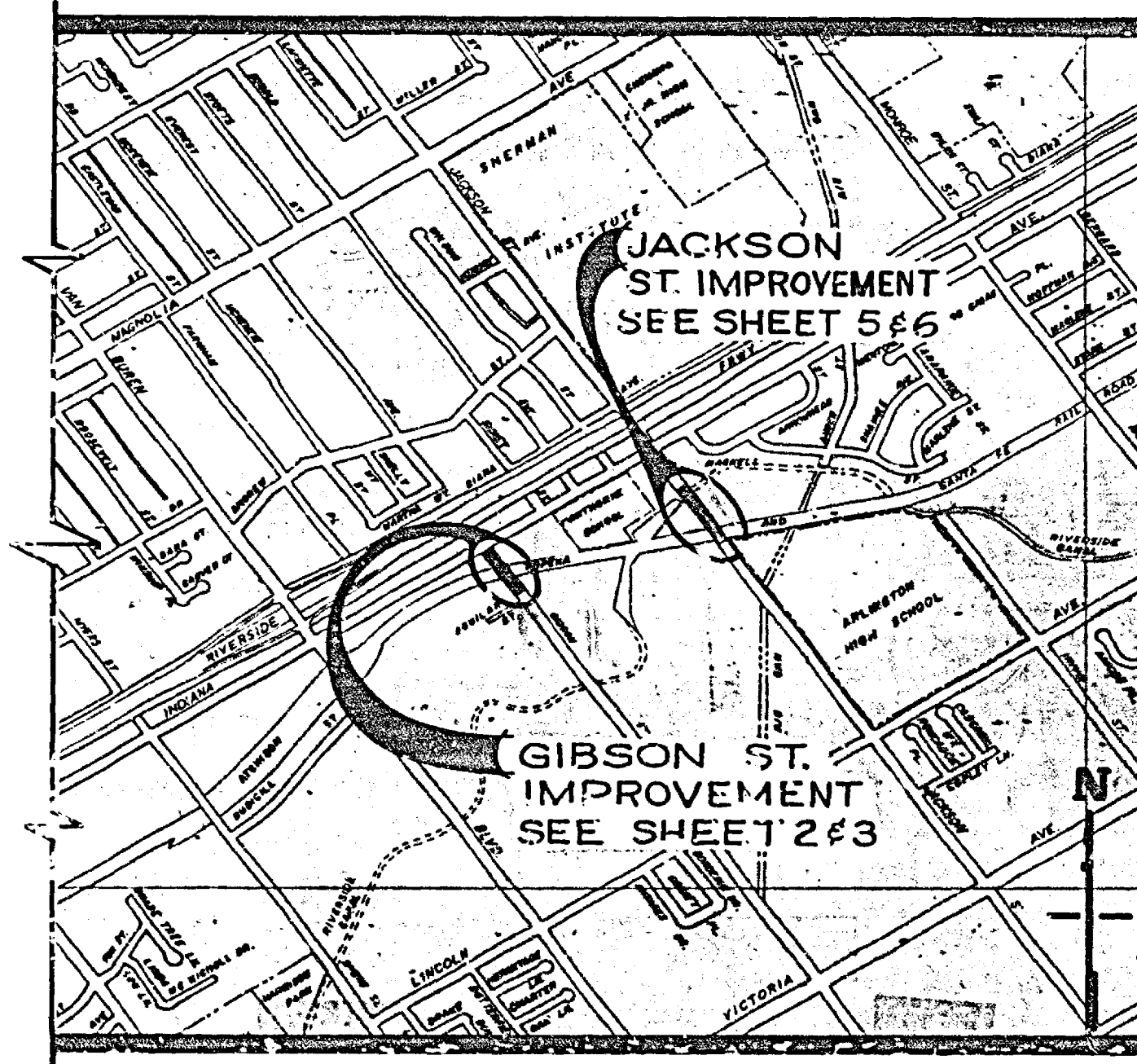
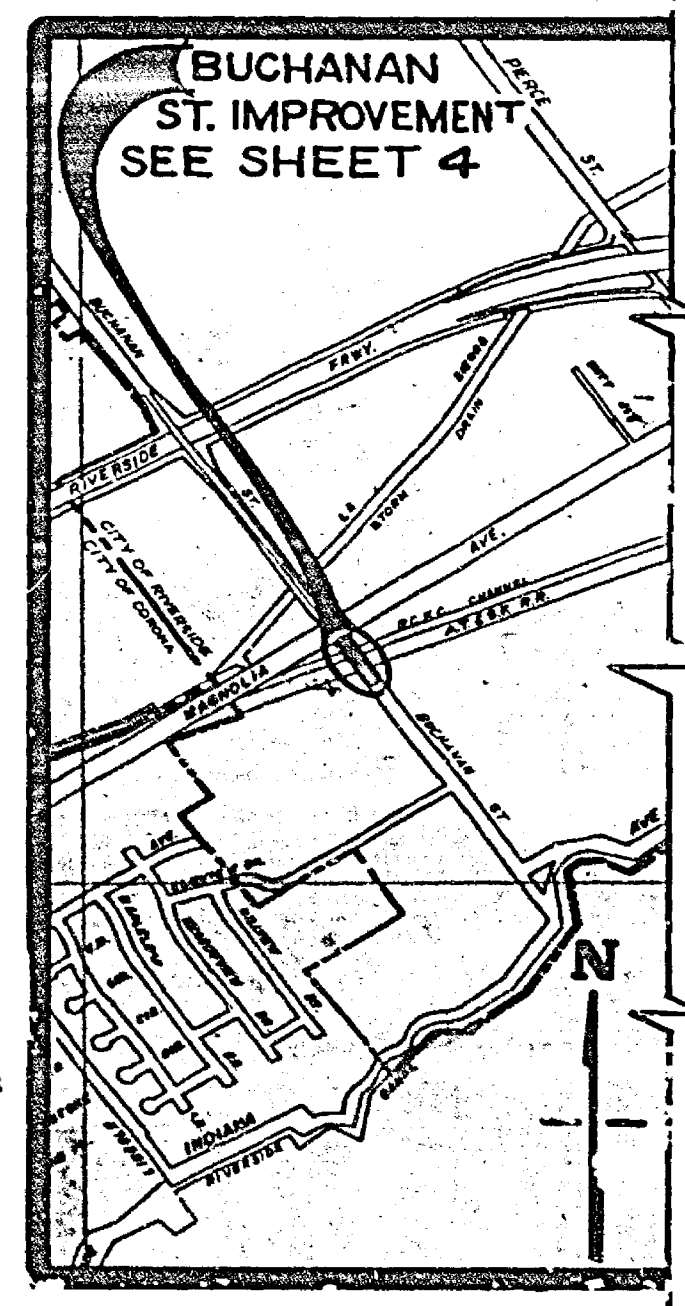


### CONSTRUCT PER CITY OF RIVERSIDE STANDARD DRAWINGS:

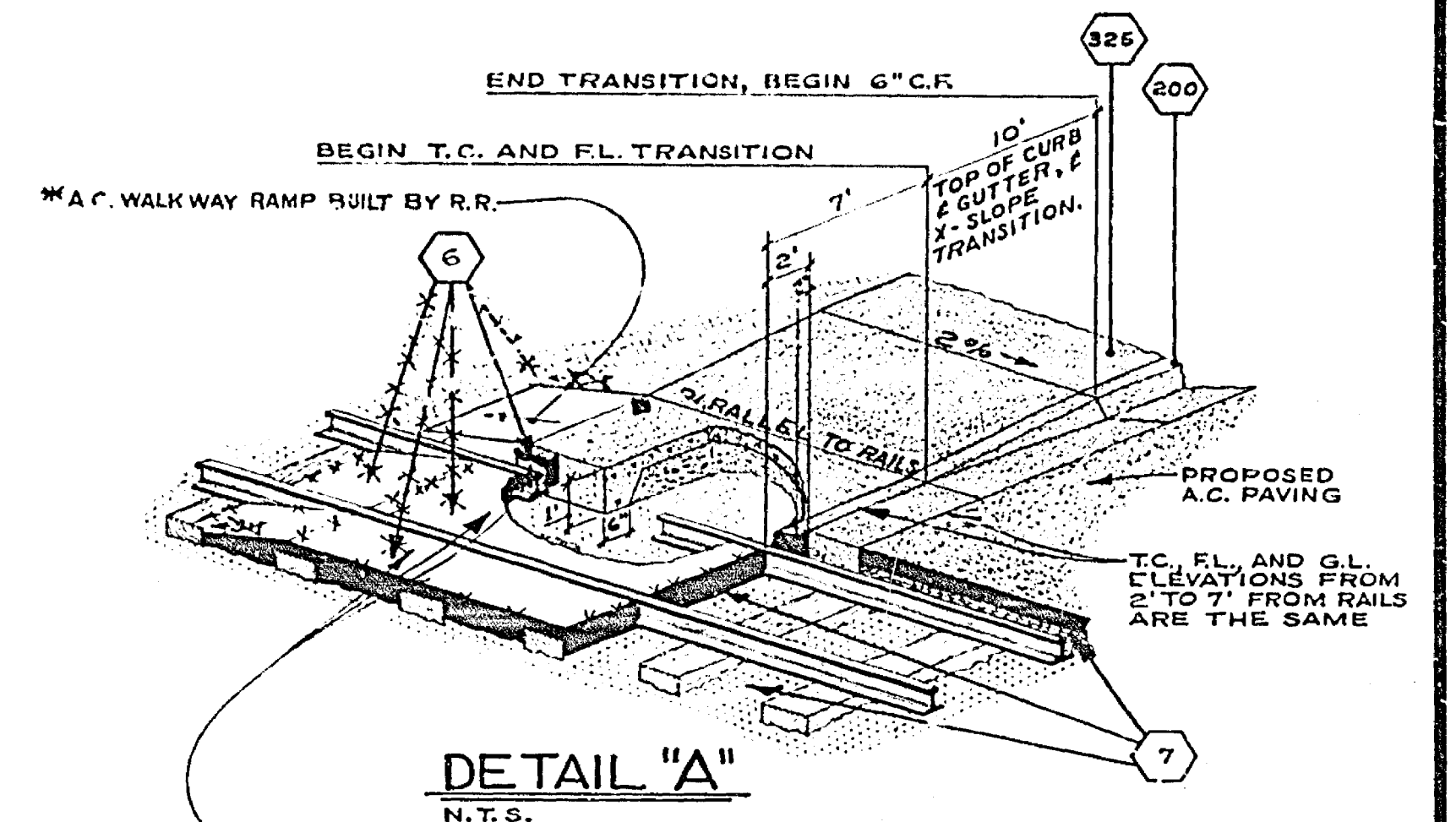
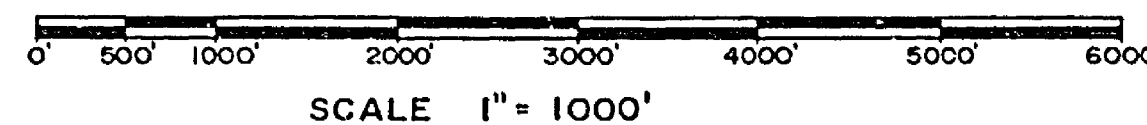
- 200 CURB AND GUTTER PER STD. DWG. 200 TYPE I EXCEPT AS SHOWN ON PLAN, WITH 6" CURB FACE EXCEPT AS SHOWN ON PROFILE.
- 250 ASPHALT CONCRETE BERM PER STD. DWG. 250 TYPE I EXCEPT AS SHOWN ON PLAN, WITH DEPRESSION TO 0.08' AT DRIVEWAYS.
- 325 SIDEWALK PER STD. DWG. 325 WITH DIMENSIONS SHOWN ON PLAN AND TYPICAL SECTION.
- 407 CATCH BASIN PER STD. DWG. 407 WITH DIMENSIONS SHOWN ON PLAN AND PROFILE.
- 411 UNDER SIDEWALK DRAIN PER STD. DWG. 411 WITH DIMENSIONS SHOWN ON PLAN.
- 452 PIPE BEDDING PER STD. DWG. 452 CASE I.
- 453 TRENCH BACKFILL PER STD. DWG. 453 CASE I.
- 650 STEEL GUARD RAIL PER STD. DWG. 650.
- 900 CHAIN LINK FENCE PER STD. DWG. 900.
- 302 DRIVEWAY APPROACH PER STD. DWG. 302, TYPE NUMBER SHOWN ON PLAN.
- 220 CROSS GUTTER PER STD. DWG. 220.
- 562 SEWER LATERAL PER STD. DWG. 562.
- 1 STRUCTURAL SECTION NOTED ON EACH PLAN AND PROFILE SHEET.
- 2 ASPHALT CONCRETE, OVERLAY EXISTING PAVEMENT WITH VARIABLE THICKNESS, 0.10' MIN.
- 3 REGRADE DRIVEWAY TO LIMITS SHOWN ON PLAN.
- 4 CONSTRUCT WALKWAY OF D.G. BASE MATERIAL 0.33' THICK.  
REMOVE EXISTING PAVEMENT.
- 5 INSTALL 8" CONCRETE PIPE TO BACK OF CANAL WALL ON 2% GRADE, CONNECTION OF PIPE TO CANAL TO BE DONE BY OTHERS. EXACT LOCATION OF PIPE TO BE DETERMINED AT TIME OF CONSTRUCTION.
- R REMOVE ENTIRE TREE. CLASS IS SHOWN ON PLAN.  
CLASS I OVER 6" TO 18" DIA.  
CLASS II OVER 18" TO 36" DIA.  
CLASS III OVER 36" DIA.
- 119 TYPE S-1 STREET LIGHT TO BE RELOCATED TO NEW FOUNDATION PER CITY OF RIV. PUB. UTILITIES DEPT. SPEC. 119 AND STD. DWG. U.G.S.-800. INSTALL 1" RIGID STEEL SWEEP IN NEW FOUNDATION FOR CABLE ENTRANCE. ISBANDON CABLE NORTH OF NEW LOCATION. CONTACT UTILITIES INSPECTOR (787-7429) BEFORE STARTING WORK.
- 6 PEDESTRIAN CROSSING ASPHALT CONCRETE, VARIABLE THICKNESS.
- 7 CONSTRUCTION BETWEEN RAILS AND 2' OUTSIDE OF RAILS TO BE DONE BY OTHERS.

### GENERAL CONSTRUCTION NOTES

1. EXACT LOCATIONS AND DEPTHS OF UNDERGROUND UTILITIES ARE UNKNOWN. THE LOCATIONS AND DEPTHS SHOWN ON THIS PLAN ARE FROM UTILITY RECORDS. THE CONTRACTOR IS REQUIRED TO TAKE DUE PRECAUTIONARY MEASURES TO LOCATE AND PROTECT ALL UNDERGROUND FACILITIES WHETHER OR NOT SHOWN ON PLAN. WHERE THE COVER TO THE TOP OF UTILITY IS KNOWN IT IS SHOWN IN THE PROFILE. IF COVER IS UNKNOWN THE UTILITY IS SHOWN IN THE PROFILE BY:
  - (A) SANITARY SEWER
  - (B) WATER
  - (C) STORM DRAIN
  - (D) IRRIGATION WEIR
  - (E) GAS
  - (F) ELECTRIC
  - (G) TELEPHONE
  - (H) WATER METER
  - (I) FIRE HYDRANT
  - (J) SPRINKLER HEAD
  - (K) VALVE
2. THE CONTRACTOR SHALL BE RESPONSIBLE TO REPAIR OR REPLACE IN KIND AT HIS OWN EXPENSE ANY IMPROVEMENTS DAMAGED BY HIS OPERATIONS DURING CONSTRUCTION.
3. WHERE NEW CONSTRUCTION IS INDICATED: (A) CLEAR AND GRUB (B) REMOVE CURB, GUTTER, AND SIDEWALK.
4. RIGHTS OF ENTRY HAVE BEEN OBTAINED FOR WORK SHOWN ON PRIVATE PROPERTY.
5. TRAFFIC SIGNS REMOVED DURING CONSTRUCTION SHALL BE SALVAGED BY THE CONTRACTOR AND RELOCATED AS DIRECTED BY THE INSPECTOR.
6. CURB AND GUTTER, SIDEWALK, AND DRIVEWAY REMOVAL SHALL BE TO THE LIMITS SHOWN ON THE PLAN OR TO THE NEAREST CONSTRUCTION JOINT BEYOND THE PLAN LIMITS.
7. WHERE NEW SIDEWALK OR DRIVEWAY MEETS OR REPLACES EXISTING SIDEWALK OR DRIVEWAY, JOINTS SHALL BE MATCHED TO EXISTING.
8. UNLESS OTHERWISE NOTED ON PLAN, ALL SLOPES TO BE 2:1. SLOPES LESS THAN 2:1 HIGH ARE NOT NECESSARILY SHOWN ON THE PLAN.
9. TRANSITION NEW CONSTRUCTION TO MEET EXISTING FACILITIES AS DIRECTED BY THE INSPECTOR.
10. ADJUST ALL SEWER AND STORM DRAIN MANHOLES TO FINISH GRADE.
11. ALL ELEVATIONS SHOWN ON THE PLAN SHALL BE STAKED IN THE FIELD.
12. INTERFERING UTILITIES SHALL BE RELOCATED BY OTHERS PRIOR TO CONST.



### PROJECT LOCATION PLAN



### EXISTING CULTURE AND UNDERGROUND LEGEND

EXISTING UNDERGROUND UTILITIES			
SANITARY SEWER	8" VCP-S	TELEPHONE CONDUIT	T-T
WATER LINE	6" CI-W	ELECTRICAL CONDUIT	E-E
STORM DRAIN	24" RCP-SD	STREET LIGHTING	SL-SL
CULVERT	15" CONC-C	TRAFFIC SIGNAL	SIG-SIG
IRRIGATION LINE	20" IRR	FIRE ALARM	F-F
GAS LINE	3" M-G		

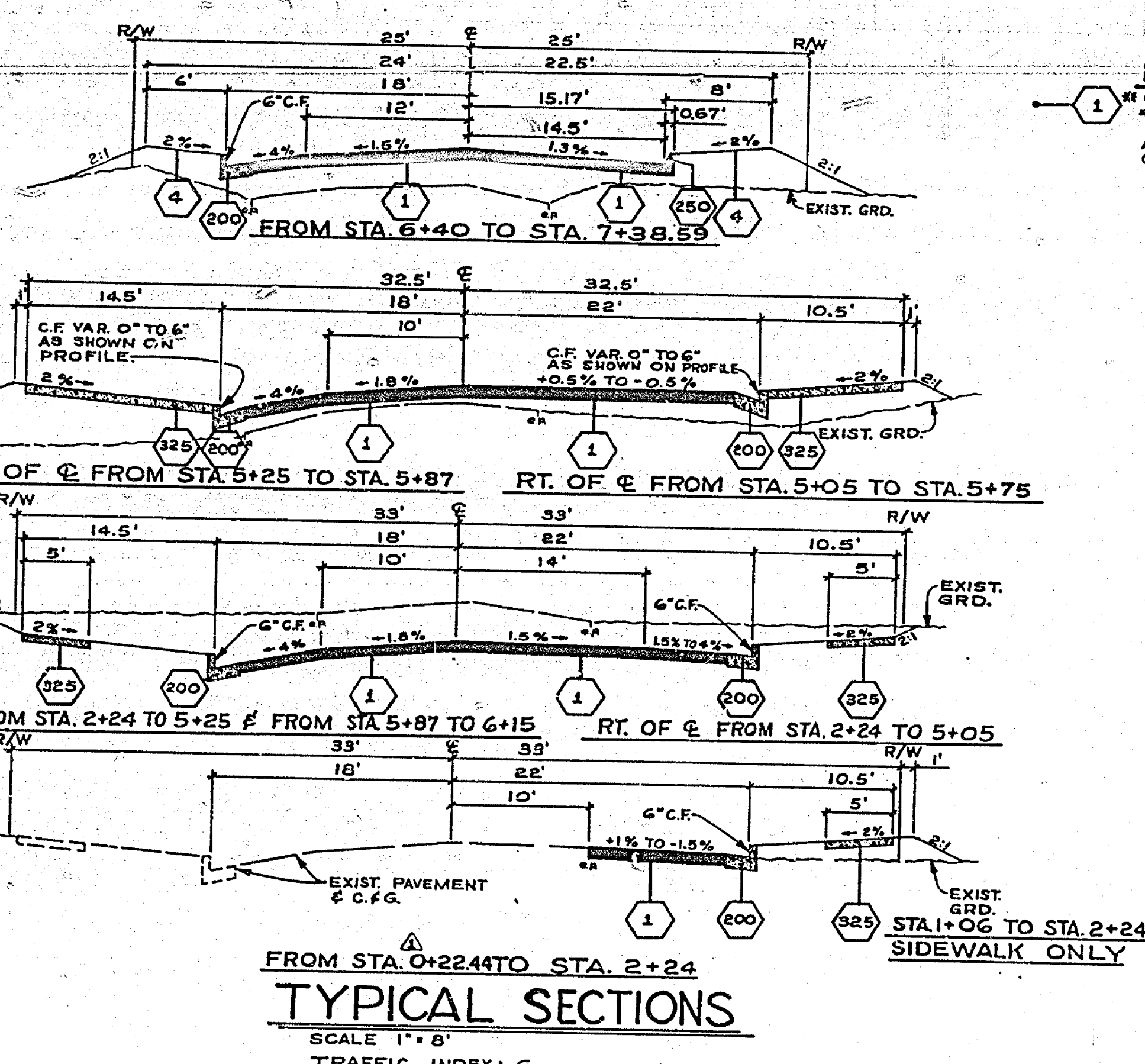
EXISTING TOPOGRAPHY	
BLOCK WALL	TOP OF SLOPE
BOARD FENCE	TOE OF SLOPE
WIRE FENCE	DIRECTION OF FLOW
CHAIN LINK FENCE	

○ SANITARY SEWER MH	○ POWER POLE	⊞ RAILROAD TRACKS
○ SANITARY SEWER CLEAOUT	○ GUY POLE	⊞ RAILROAD SIGN
○ STORM DRAIN MH	○ POLE & GUY ANCHOR	⊞ RAILROAD SIGNAL
○ IRRIGATION WEIR	○ PULL BOX	
○ WATER MH	○ TRAFFIC SIGN	
○ GAS MH	○ PARKING METER	○ STREET LIGHT (UPRIGHT)
○ ELECTRIC MH	○ FIRE ALARM BOX	○ STREET LIGHT
○ TELEPHONE MH OR VAULT	○ STREET NAME SIGN	○ TRAFFIC SIGNAL
○ WATER METER	○ GAS METER	○ TRAFFIC SIGNAL ON MAST ARM
○ FIRE HYDRANT	○ MAIL BOX	○ TRAFFIC CONTROL BOX
○ SPRINKLER HEAD	○ HYDRANT ON FAUCET	○ TRAFFIC SIGNAL DETECTOR
○ VALVE		○ PEDESTRIAN CONTROL FOR TRAFFIC SIGNAL

CONCRETE	TREE SHOWING DIAMETER IN INCHES
ASPHALT	PALM SHOWING DIAMETER IN INCHES
EDGE OF PAVEMENT	SHRUBBERY
BUILDING	TREE STUMP DIAMETER IN INCHES
UNDERGROUND OR OVERHANGING STRUCTURE	

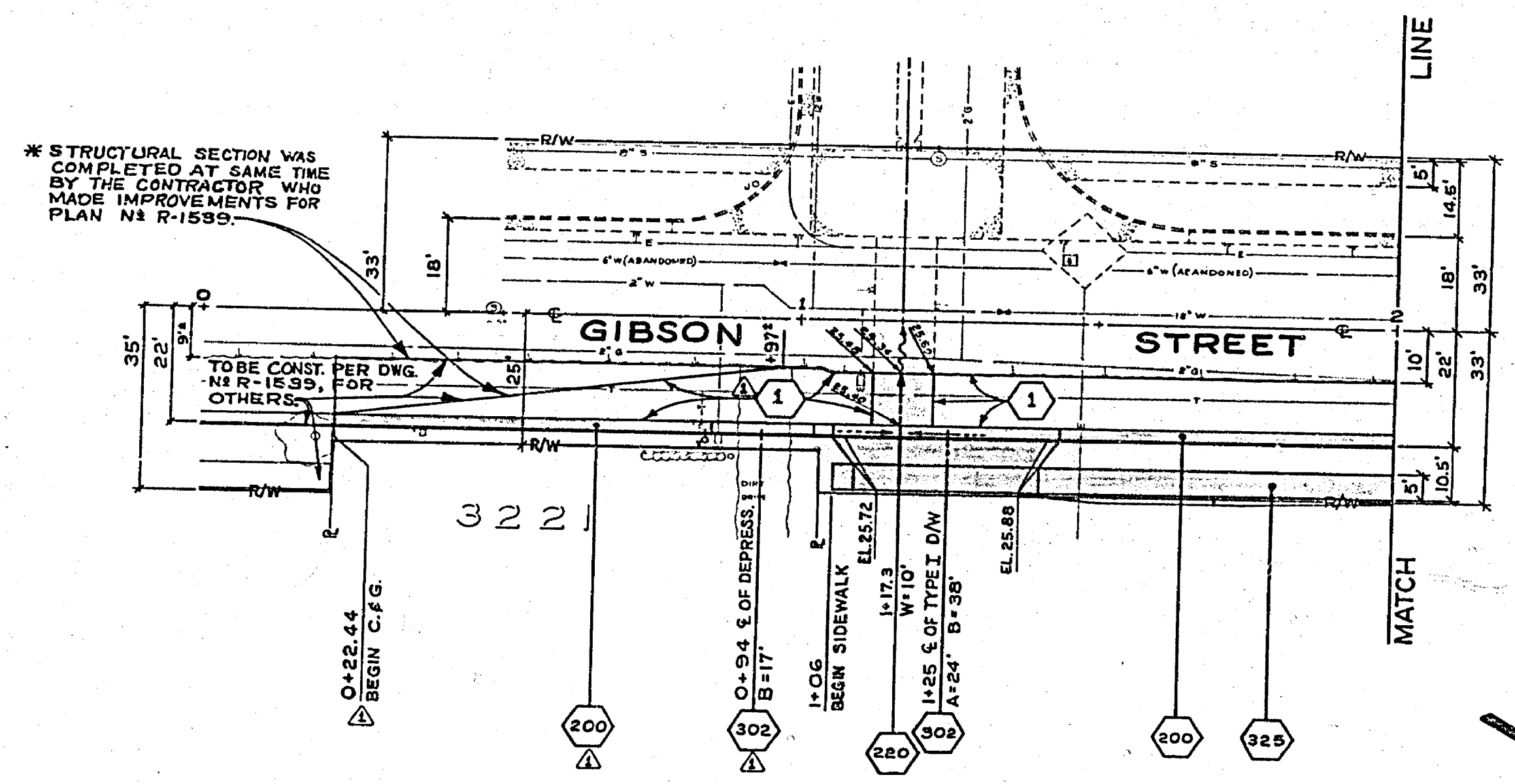
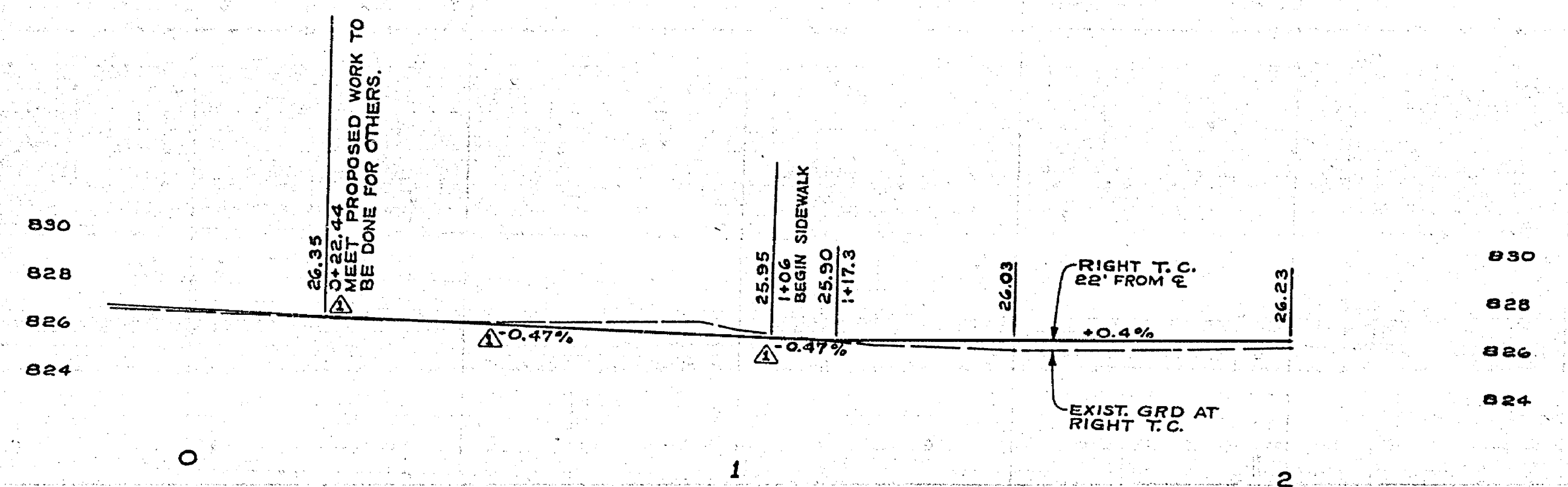
CITY OF RIVERSIDE, CALIFORNIA PUBLIC WORKS DEPARTMENT		* "AS BUILT" 1-29-75 JPC	
APPROVED BY PRINCIPAL ENGINEER DATE 6/24	APPROVED BY DIRECTOR OF PUBLIC WORKS DATE 6/24	GIBSON STREET BUCHANAN STREET JACKSON STREET IMPROVEMENTS AT A.T. & S.F. CROSSING	ACCOUNT No 284, 287, 288 DRAWING NUMBER R-1707
DESIGNED BY [ ] DRAWN BY [ ] CHECKED BY [ ]		TITLE SHEET	SHEET 1 OF 6



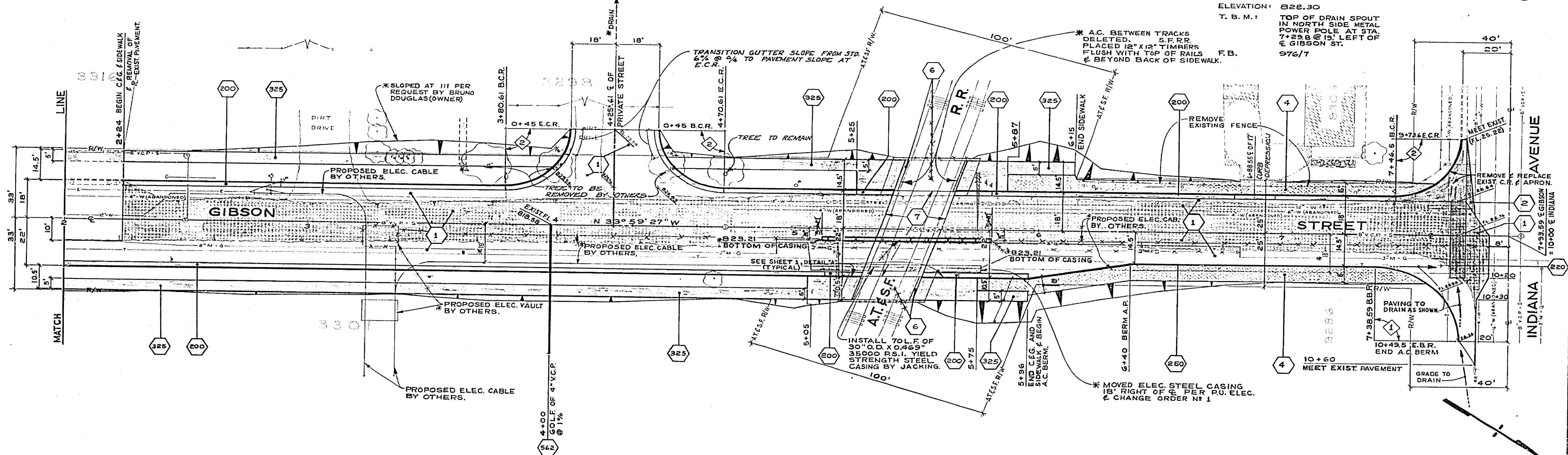
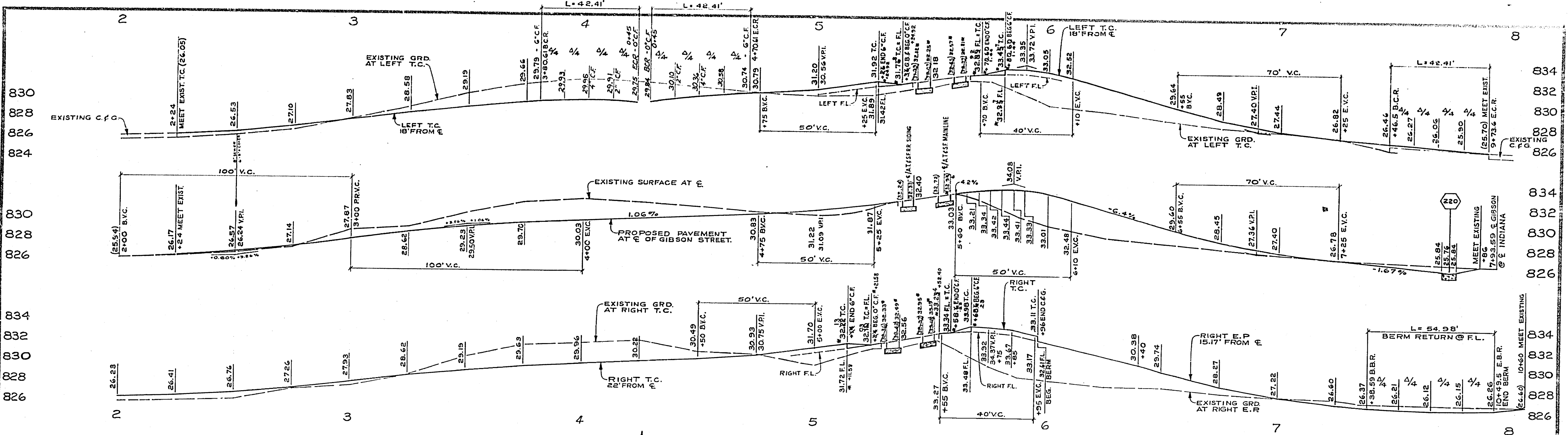


**TYPICAL SECTIONS**  
SCALE 1" = 8'  
TRAFFIC INDEX: 6

**LEGEND:**  
1 CONSTRUCT STRUCTURAL SECTION OF ~~CONCRETE~~ OVER ~~PAVEMENT~~ 0.25' A.C. OVER 0.45' D.G. BASE MATERIAL.  
ALL OTHER CONSTRUCTION SYMBOLS AND NOTES ARE SHOWN ON SHEET 1.



<p><b>-CAUTION-</b> PACIFIC TELEPHONE CABLES UNDERGROUND BEFORE EXCAVATING CALL COLLECT: 7:30 A.M. to 5 P.M. After Hours Orange County 714-633-0811 Riverside County 714-684-0071</p>	<p>EXTENDED CURB, GUTTER &amp; MATCH UP PAVING FROM STA. 0+22.44 TO STA. 1+06.00 PER CHANGE ORDER NO. 3.</p>	<p><b>CITY OF RIVERSIDE</b> PUBLIC WORKS DEPARTMENT</p>	<p>* "AS BUILT" 1-29-75 JPC.</p>
	<p>DESIGNED BY: DF DRAWN BY: JPC CHECKED BY: WJK</p>	<p>APPROVED BY: [Signature] DATE: 6-24-74</p>	<p><b>Gibson Street Improvement</b> At A.T. &amp; S.F. Crossing</p>



CURVE DATA				
INDEX	R	Δ	T	L
1	35'	90°	35'	54.98'
2	27'	90°	27'	42.41'

**-CAUTION-**  
**PACIFIC TELEPHONE**  
**CABLES UNDERGROUND**  
**BEFORE EXCAVATING**  
**CALL COLLECT:**  
 After Hours  
 7:30 A.M. to 5 P.M.  
 Orange County 714-423-0811 714-547-6656  
 Riverside County 714-984-0271 714-547-6456

**CITY OF RIVERSIDE**  
**PUBLIC WORKS DEPARTMENT**

DATE: 6-24-74

**Gibson Street Improvement**  
**At A.T. & S.F. Crossing**

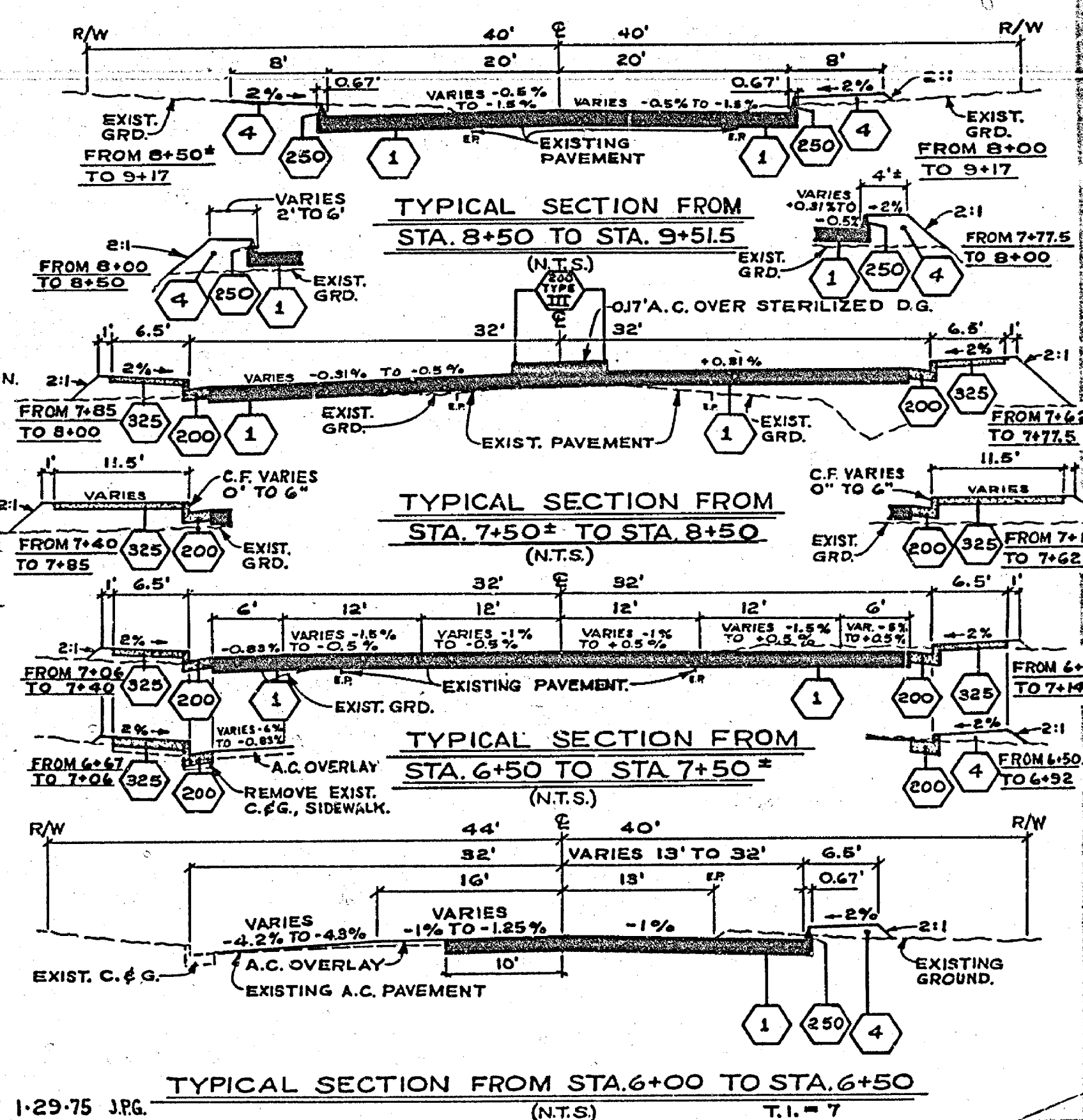
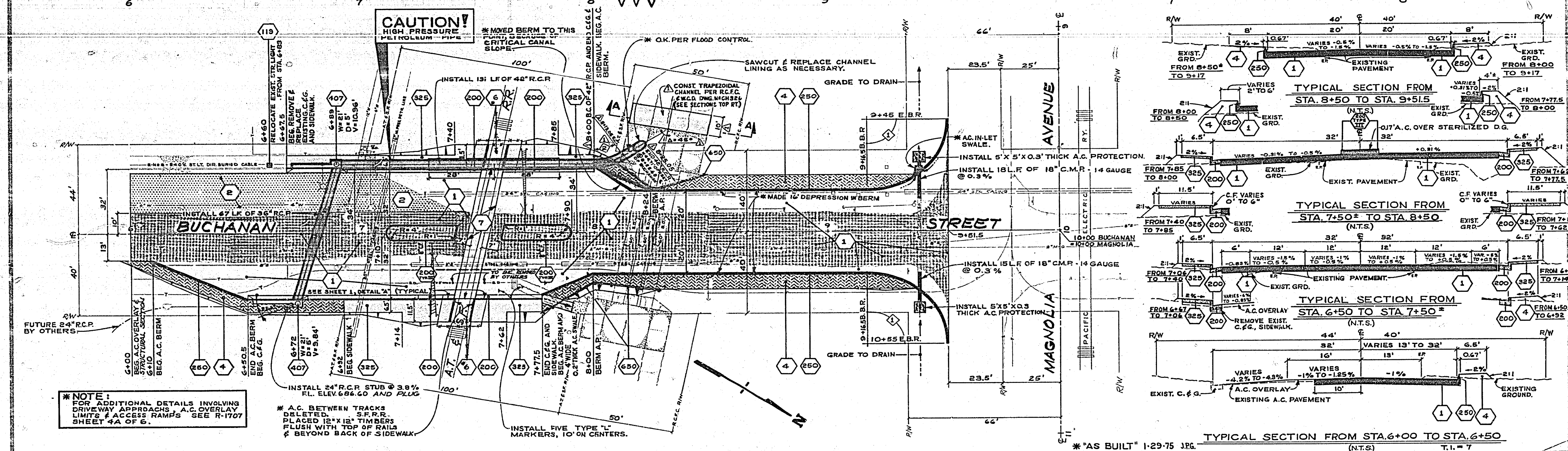
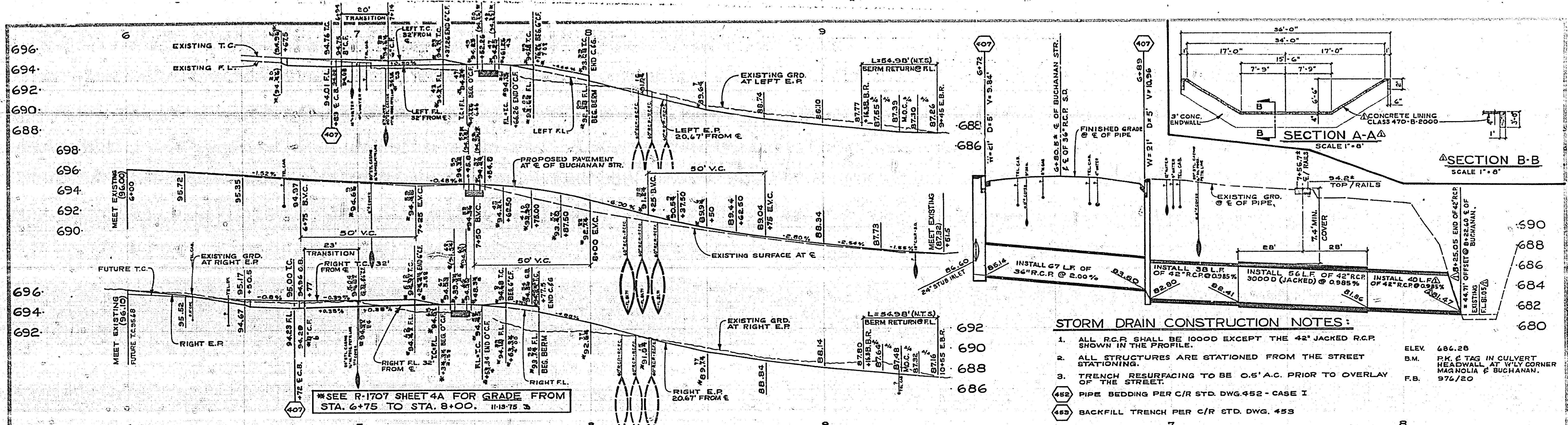
\* 'AS BUILT' 1-29-75 JRG.

ACCOUNT NO. 30-575-286-03

**R-1707**

SHEET 3 OF 6





**NOTE:**  
FOR ADDITIONAL DETAILS INVOLVING DRIVEWAY APPROACHES, A.C. OVERLAY LIMITS & ACCESS RAMPS SEE R-1707 SHEET 4A OF 6.

**LEGEND:**  
 \*CONSTRUCT STRUCTURAL SECTION OF DRIVEWAY APPROACHES, A.C. OVERLAY LIMITS & ACCESS RAMPS SEE R-1707 SHEET 4A OF 6.  
 ALL OTHER CONSTRUCTION SYMBOLS AND NOTES ARE SHOWN ON SHEET 1.

CURVE DATA				
INDEX	R	Δ	T	L
1	35'	90°	36'	53.98'
2	22.5'	53.48°	6.34'	13.05'

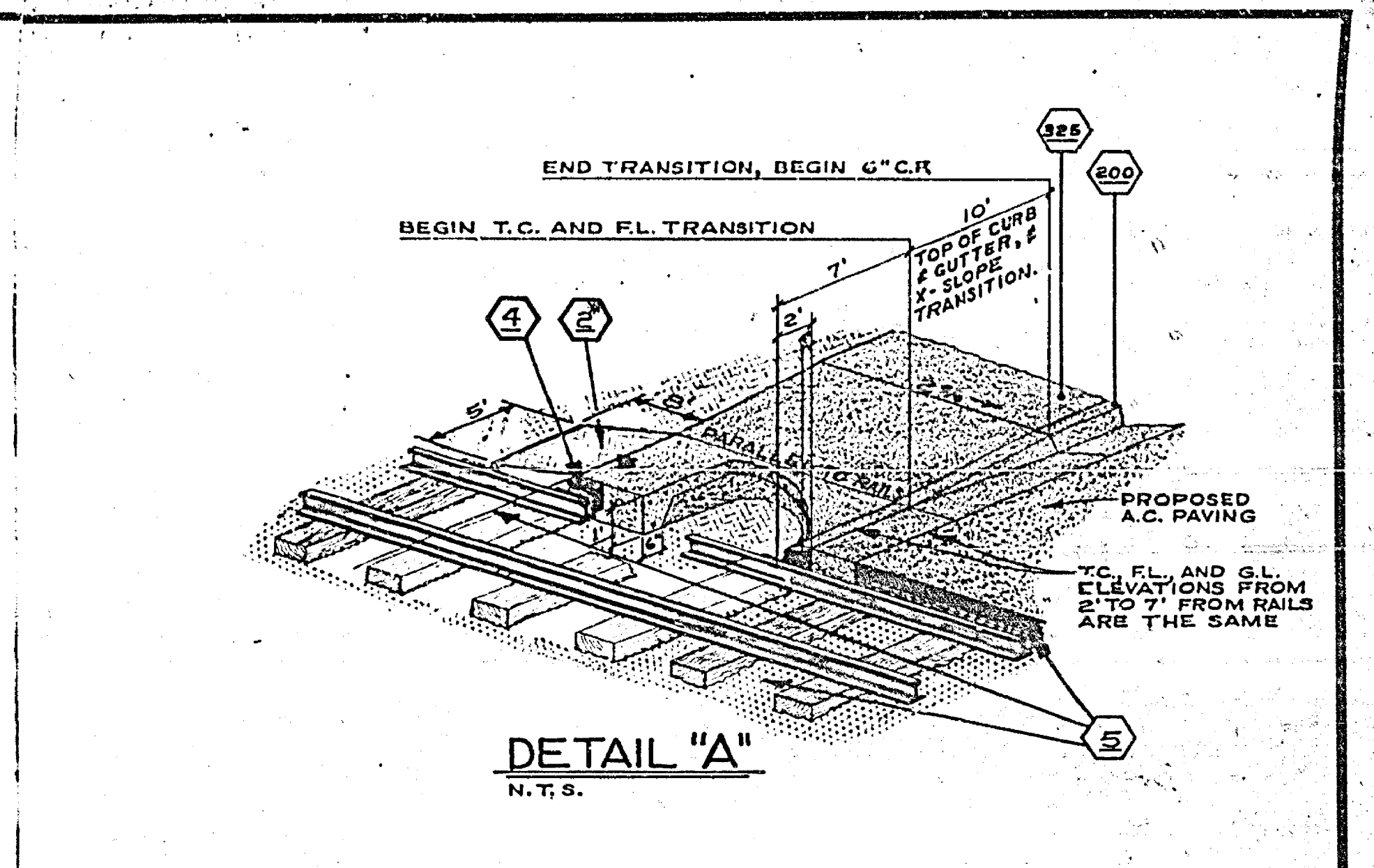
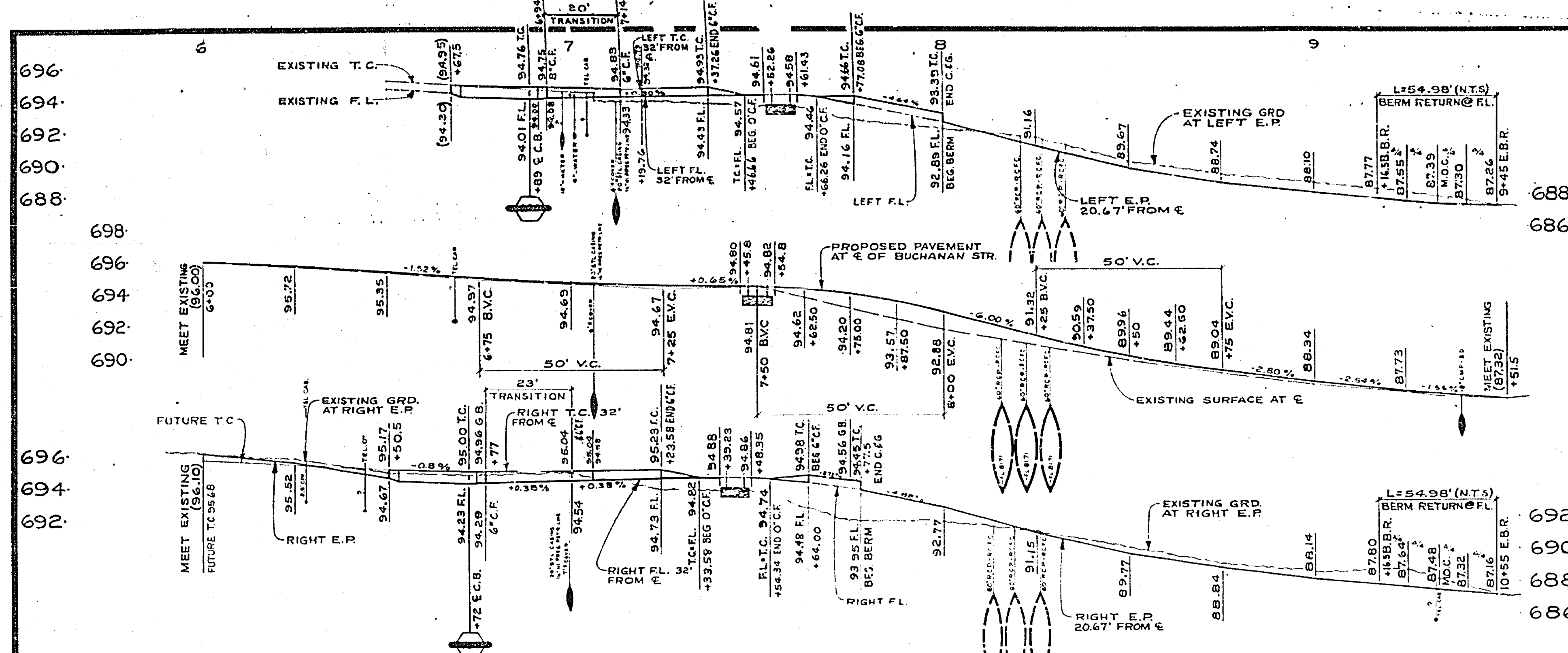
**CAUTION!**  
PACIFIC TELEPHONE  
CABLES UNDERGROUND  
BEFORE EXCAVATING  
CALL COLLECT  
7:30 A.M. to 5 P.M.  
After Hours & Holidays  
714-257-0811 714-257-0806  
714-257-0811 714-257-0806

REVISED 48" PIPE ALIGNMENT FROM STA. 7+95 & ADDED 10' CHANNEL LINING PER CHANGE ORDER NO. 1

**CITY OF RIVERSIDE**  
PUBLIC WORKS DEPARTMENT  
APPROVED BY: [Signature]  
DATE: 6-24-17

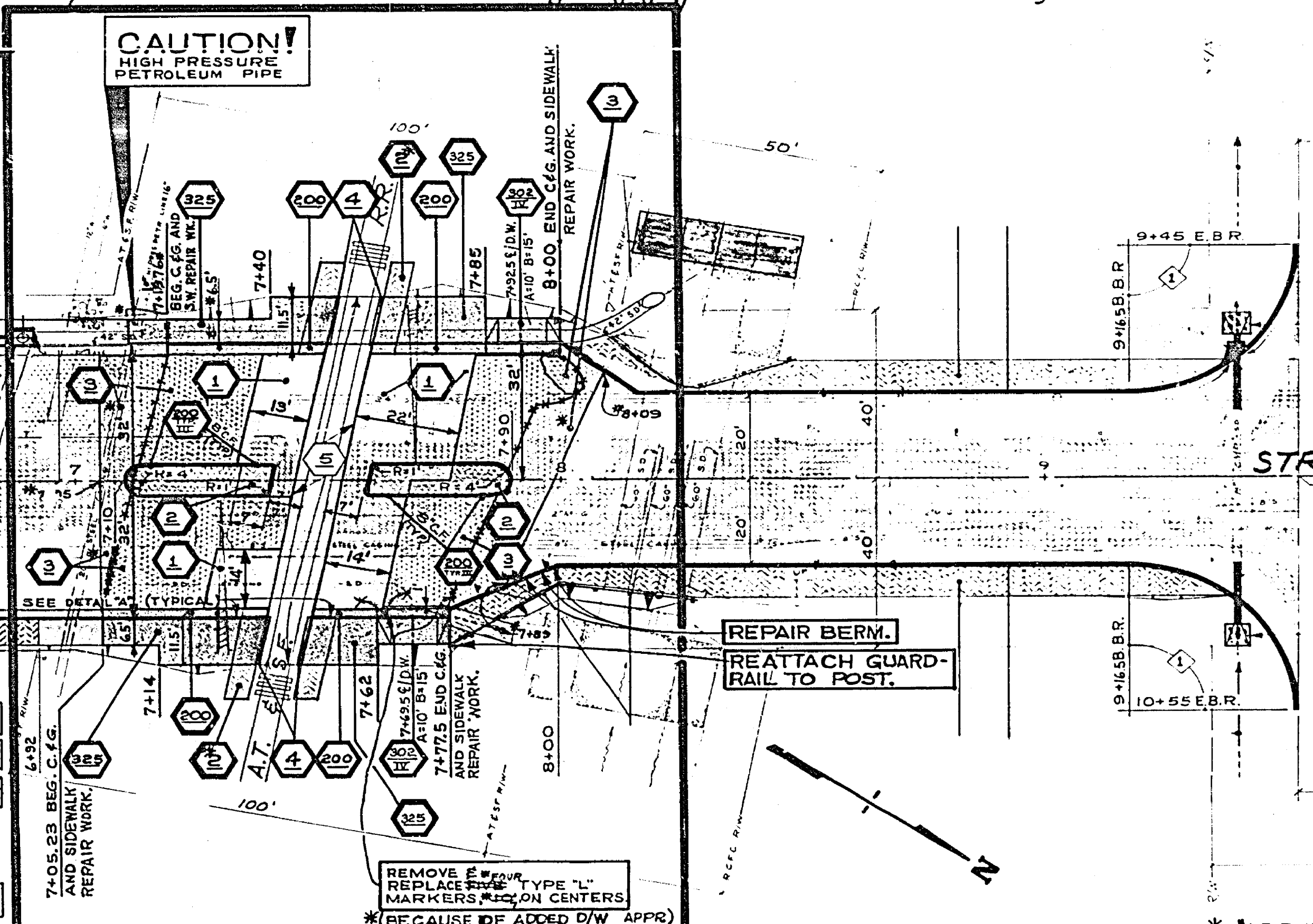
**Buchanan Street Improvement**  
At A.T. & S.F. Crossing  
R-1707  
SHEET 4 OF 6  
HORIZ. SCALE: 1" = 20'  
VERT. SCALE: 1" = 4'





ELEV 686.28  
 B.M. P.K. & TAG IN CULVERT HEADWALL AT WLY CORNER MAGNOLIA & BUCHANAN.  
 F.B. 9/76/20

REPAIR WORK AREA  
 (SEE LEGEND BELOW)



**LEGEND FOR REPAIR WORK:**

- 1 REMOVE & REPLACE A.C. PAVEMENT, 0.17" THICK. NOTE: THIS ITEM DELETED, PER C.O. NR 1
- 2 REMOVE & REPLACE A.C. PAVEMENT, 0.17" THICK. PLACED 3/4" ROCK ACCESS RAMPS PER A.T. & S.F.
- 3 A.C. OVERLAY AS DIRECTED BY THE INSPECTOR.
- 4 REMOVE & REPLACE ASPHALT CONCRETE BETWEEN CONCRETE & 12" X 12" TIMBERS.
- 5 REMOVE & REPLACEMENT BETWEEN RAILS AND 2' OUTSIDE OF RAILS TO BE DONE BY OTHERS.
- 6 REMOVE & REPLACE C.C. & G. PER STD. DWG. 800 TYPE I EXCEPT AS SHOWN ON PLAN & PROFILE.
- 7 REMOVE & REPLACE SIDEWALK PER STD. DWG. 366 WITH DIMENSIONS SHOWN ON PLAN & TYPICAL SECTION.
- 8 CONST. DRIVEWAY APPROACH PLR C/R STD. DWG. 302 TYPE IV, 'A' & 'B' DIMENSIONS ARE GIVEN ON PLAN.

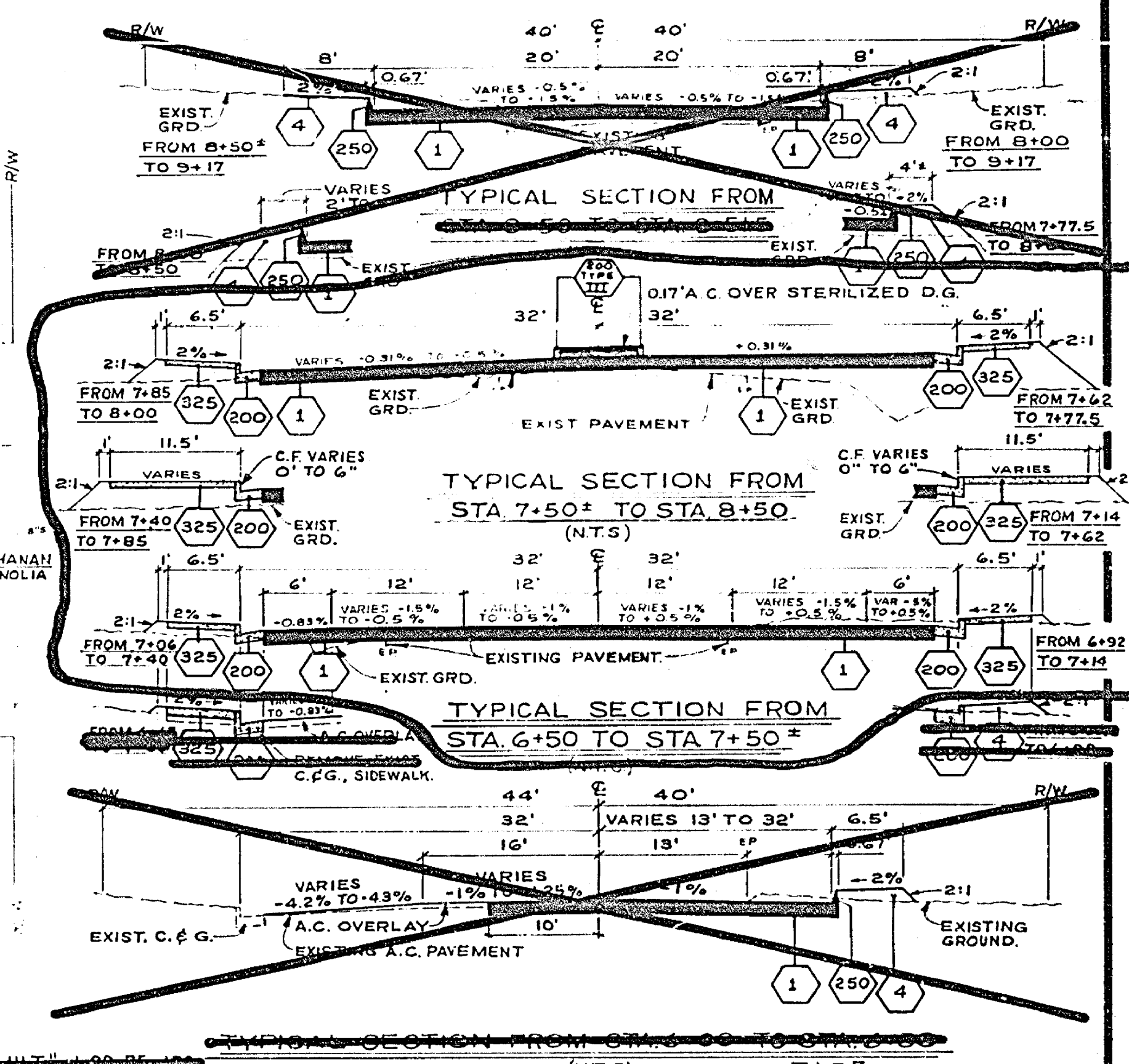
CURVE DATA				
INDEX	R	Δ	T	L
1	100'	32°	17.36'	32.84'
2	100'	32°	17.36'	32.84'
3	100'	32°	17.36'	32.84'
4	100'	32°	17.36'	32.84'
5	100'	32°	17.36'	32.84'
6	100'	32°	17.36'	32.84'
7	100'	32°	17.36'	32.84'
8	100'	32°	17.36'	32.84'
9	100'	32°	17.36'	32.84'
10	100'	32°	17.36'	32.84'

**CAUTION - PACIFIC TELEPHONE CABLES UNDERGROUND BEFORE EXCAVATING**  
 CALL COLLECT: 730 A.M. to 5 P.M. After Hours & Holidays  
 Orange County: 714-633-0811 - 714-347-6600  
 Riverside County: 714-684-0271 - 714-347-6600

DESIGNED BY	DRAWN BY	CHECKED BY	DATE
22	385	21	7/22/75

**CITY OF RIVERSIDE PUBLIC WORKS DEPARTMENT**  
 APPROVED BY: [Signature]  
 PUBLIC WORKS DIRECTOR  
 DATE: July 22, 1975

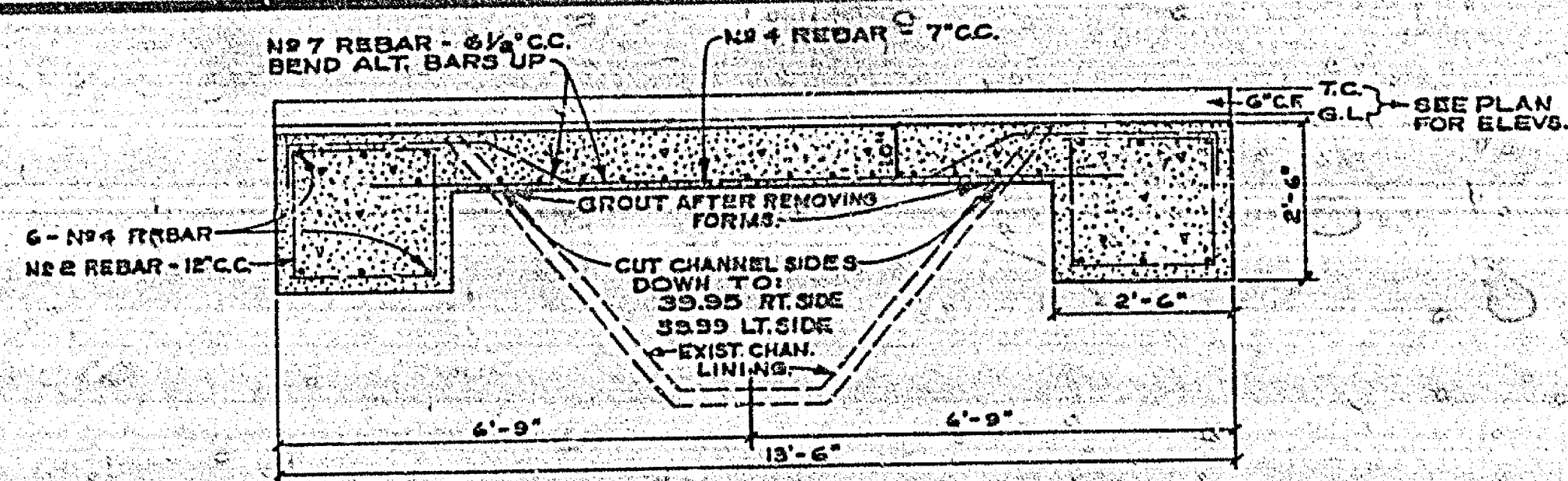
**Buchanan Street REPAIR**  
 At A.T. & S.E. Crossing  
 HORIZ SCALE: 1" = 20' VERT SCALE: 1" = 4'  
**R-1707**  
 SHEET 4A OF 6



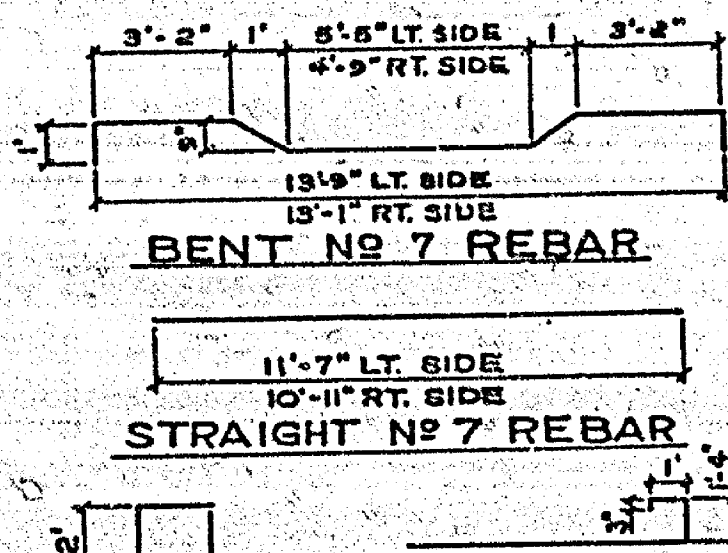






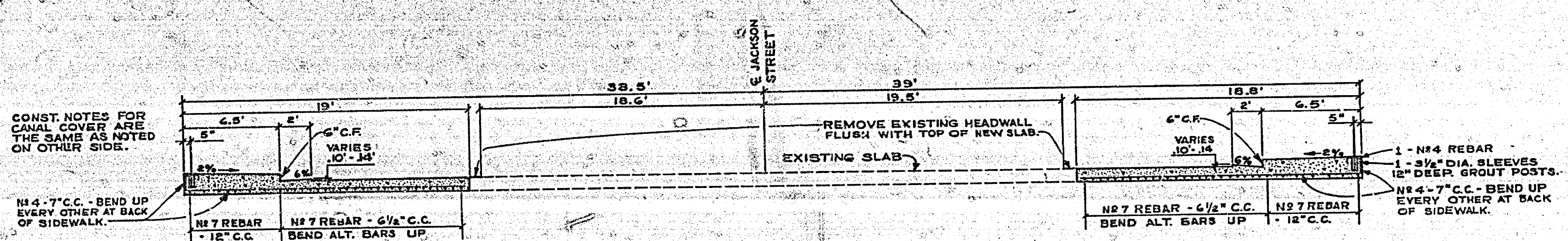


**SECTION B-B**  
SCALE 1"=2'

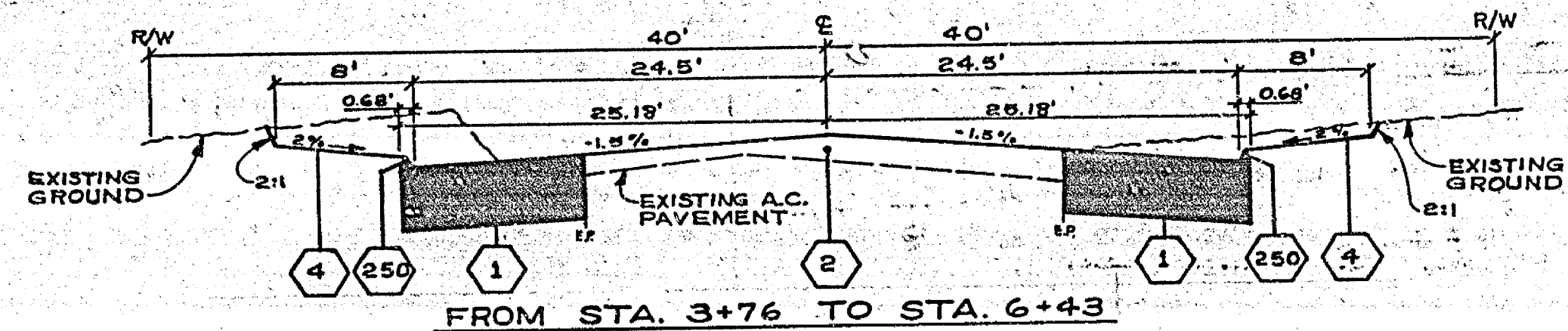


**REBAR SCHEDULE**  
N.T.S.

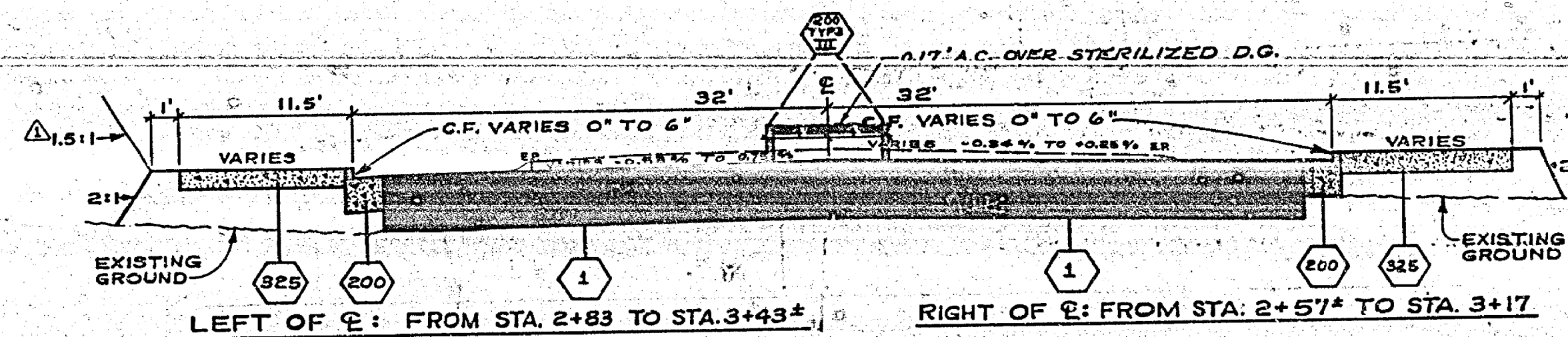
N#2 REBAR  
N#4 REBAR BEND UP EVERY OTHER AT BACK OF SIDEWALK



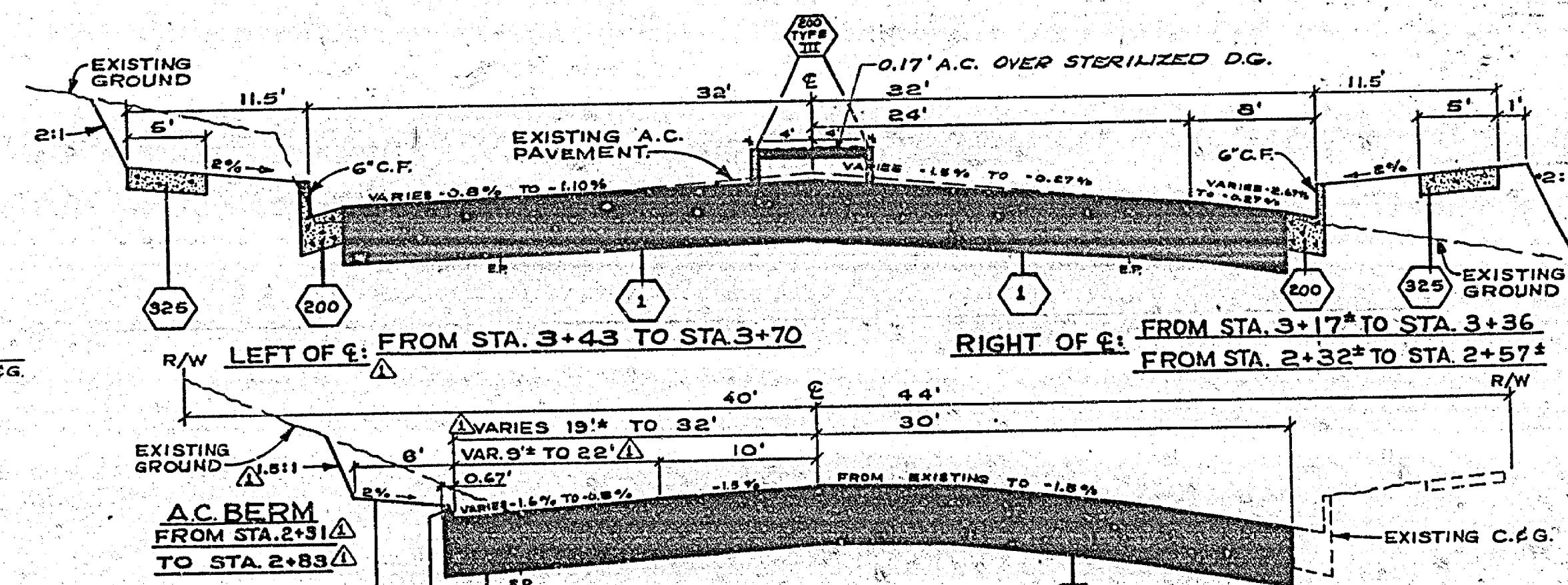
**LONG SECTION A-A**  
SCALE 1"=5'



FROM STA. 3+76 TO STA. 6+43

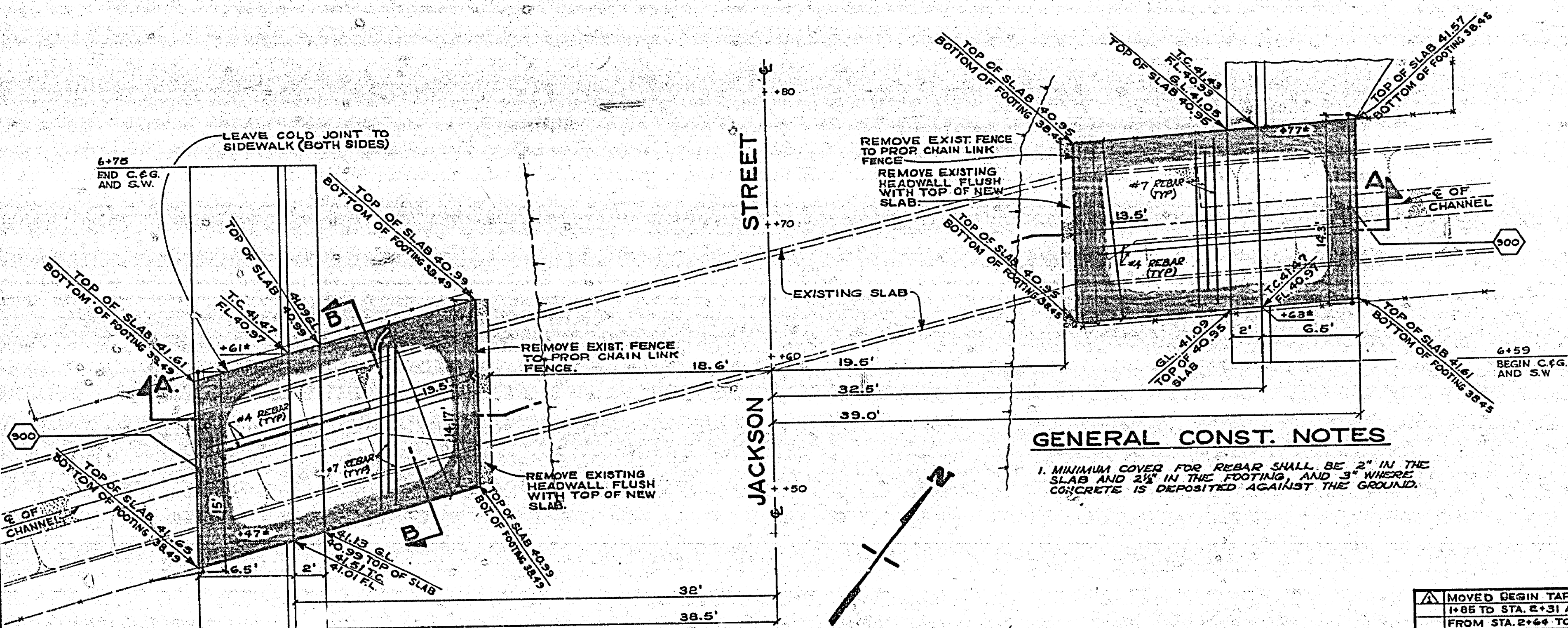


LEFT OF C: FROM STA. 2+83 TO STA. 3+43  
RIGHT OF C: FROM STA. 2+57 TO STA. 3+17



LEFT OF C: FROM STA. 3+43 TO STA. 3+70  
RIGHT OF C: FROM STA. 3+17 TO STA. 3+36  
RIGHT OF C: FROM STA. 2+32 TO STA. 2+57

FROM STA. 2+25 TO STA. 2+32  
**TYPICAL SECTIONS** # "AS BUILT" 1-29-75 J.P.G.  
N.T.S. T.I. = 7



SEE SHEET 6 FOR PLAN & PROFILE  
**PLAN VIEW - JACKSON ST. CANAL COVER**  
SCALE 1"=5'

**GENERAL CONST. NOTES**

1. MINIMUM COVER FOR REBAR SHALL BE 2" IN THE SLAB AND 2 1/2" IN THE FOOTING AND 3" WHERE CONCRETE IS DEPOSITED AGAINST THE GROUND.

MOVED BEGIN TAPER FROM STA. 1+85 TO STA. 2+31 AND BEGIN C.G. FROM STA. 2+64 TO STA. 2+83 ON WEST SIDE OF JACKSON STR.	APPROVED BY: [Signature] TRAFFIC DIVISION CHIEF P.W. ENGR.	APPROVED BY: [Signature] DIRECTOR OF PUBLIC WORKS	ACCOUNT No. 30-575-228-09 DRAWING NUMBER <b>R-1707</b> SHEET 6 OF 6
DESIGNED BY: DC DRAWN BY: [Signature] CHECKED BY: [Signature]	DATE: 7/1/74	DATE: 6-24-74	SCALE SHOWN ON DWG.