

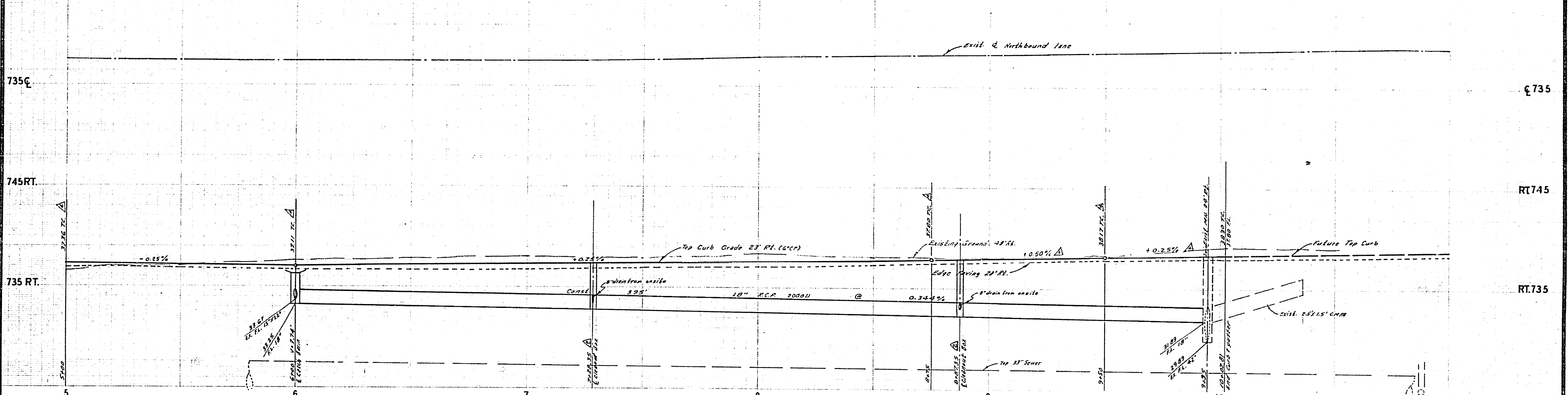
**BENCH MARK**  
 G3-F Elev. 736.332, Brass disk capped w/ intersection of E Arlington Ave and Van Buren Blvd.

- GENERAL NOTES**
- It shall be the responsibility of the Contractor to clear the right of way in accordance with the provisions of the law as to utility work, including irrigation lines and appurtenances and at no cost to the City of Riverside.
  - Construction shall be in accordance with Standard Specifications for Public Works Construction, 1973 edition and City of Riverside Standard Drawings.
  - All flagged elevations shall be stated in the field by the Engineer.
  - The subdivisor shall arrange for a soil test to be made by a soils engineer after the streets have been prepared to rough grade. Depth of paving and base material shall be determined by City of Riverside Standard Design Standards and Test Procedures.
  - Curb and gutter to be started at a 4' offset and at 12.5' intervals, referenced to null line in paving.
  - The edge of exist. pavement where new pavement line exist, pavement to a smooth, finished line, construct match-up paving as shown and verify paving as directed by the Field Engineer estimates quality to be in line.
  - Construct driveway approach per standard Div. 802, exact site to be determined at the time of construction as approved by the Traffic Engineer.
  - Place two rows of No. 3 steel reinforcing bar in gutter where grade is less than 0.40%.

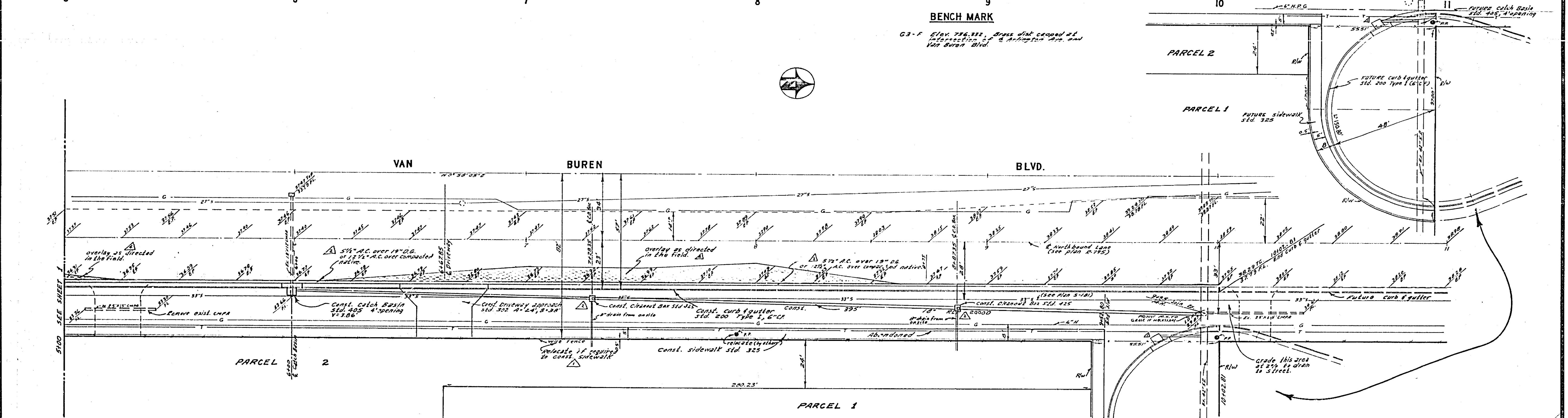
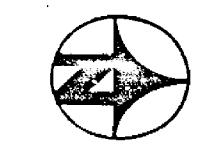
ARLINGTON AVENUE  
 11° 03' 45" W 45' 11"

<b>ALBERT A. WEBB ASSOCIATES</b> CIVIL ENGINEERS RIVERSIDE, CALIFORNIA APPROVED BY: <i>[Signature]</i> DATE: 8/7/73 R.E. No. 9026		<b>CITY OF RIVERSIDE, CALIFORNIA</b> PUBLIC WORKS DEPARTMENT APPROVED BY: <i>[Signature]</i> DATE: 10-3-73 TRAFFIC DIVISION CHIEF PUBLIC WORKS ENGINEER		<b>STREET PLAN AND PROFILE</b> <b>VAN BUREN BOULEVARD</b> P.M. 144 SCALE: 1" = 20' Horiz., 1" = 4' Vert.	ACCOUNT No. DRAWING NUMBER <b>R-171A</b> SHEET 1 OF 2 73-119-A
W.D. 73-119 FOR P.D. 1032		DESIGNED BY: <i>[Signature]</i> DRAWN BY: <i>[Signature]</i> CHECKED BY: <i>[Signature]</i>		REVISIONS:	

745 C 745  
 735 C 735  
 745 RT. RT745  
 735 RT. RT735



**BENCH MARK**  
 G3-F Elev. 736.882. Brass disk capped at intersection of Arlington Ave. and Van Buren Blvd.



ALBERT A. WEBB ASSOCIATES CIVIL ENGINEERS RIVERSIDE, CALIFORNIA APPROVED BY: <i>[Signature]</i> DATE: 8/7/73 R.E. No. 2026 W.O. 73-119 FOR: F.B. 1032	CITY OF RIVERSIDE, CALIFORNIA PUBLIC WORKS DEPARTMENT		STREET PLAN AND PROFILE VAN BUREN BOULEVARD		ACCOUNT No. DRAWING NUMBER <b>R-1714</b>
	APPROVED BY: <i>[Signature]</i> PRINCIPAL ENGINEER DATE: 10-3-73	APPROVED BY: <i>[Signature]</i> DIRECTOR OF PUBLIC WORKS DATE: 10-3-73	P.M. 144 SCALE: 1" = 20' Horiz., 1" = 4' Vert.		SHEET 2 OF 2 73-119-A