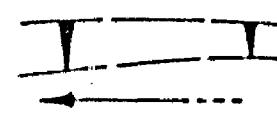


CONSTRUCTION LEGEND

CENTER LINE ————
 RIGHT-OF-WAY LINE ————
 SUBDIVISION LOT LINE ————
 TOP OF SLOPE ————
 TOE OF SLOPE ————
 DIRECTION OF FLOW ————



RIVERSIDE



CALIFORNIA

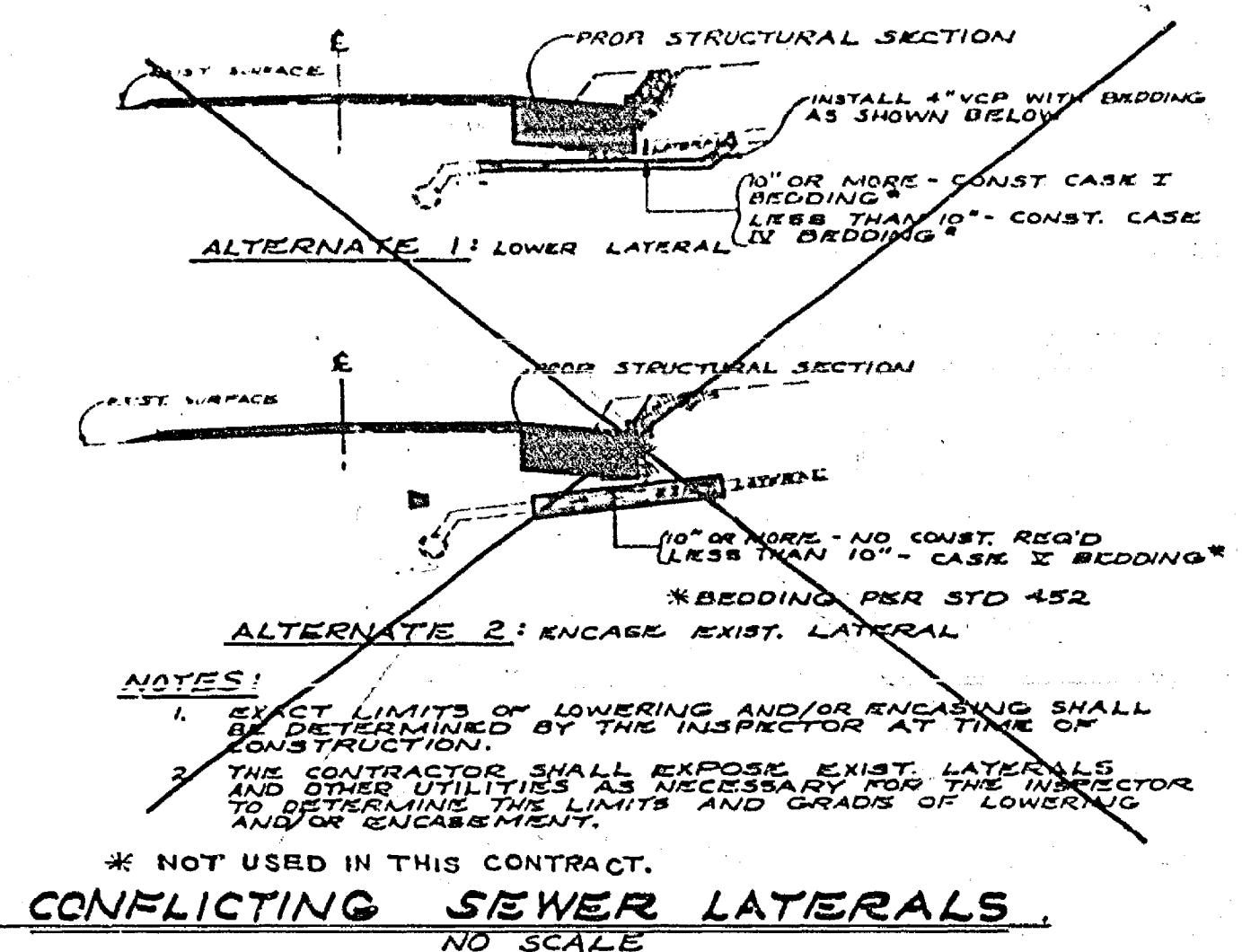
PUBLIC WORKS DEPARTMENT

**ARLINGTON AVE.
 WIDENING
 AT PHOENIX**

LENGTH OF PROJECT = 600' = 0.11 MI.

CONSTRUCT PER CITY OF RIVERSIDE STANDARD DRAWINGS:

- LOCATION OF PROPOSED LIGHT OR SIGNAL STANDARD AS SHOWN ON DWG. NO. X-435
- 123 PARABOLIC FLARE PER STD. DWG. 123
- 200 CURB & GUTTER PER STD. DWG. 200 TYPE I WITH 2" CURB FACE.
- 200 CURB PER STD. DWG. 200 TYPE III WITH 3" CURB FACE.
- 250 ASPHALT CONCRETE BERM PER STD. DWG. 250 TYPE I WITH DEPRESSION TO 0.08' AT DRIVEWAYS.
- 304 WHEELCHAIR RAMP PER STD. DWG. 304
- 325 SIDEWALK PER STD. DWG. 325
- 408 CATCH BASIN PER STD. DWG. 408
- 302 DRIVEWAY APPROACH PER STD. DWG. 302 TYPE III
- ANY REFERENCE NUMBER WITH A SUBSCRIPT 'C' REFERS TO A CONTINGENCY ITEM.
- 1 ASPHALT CONCRETE OVERLAY EXISTING PAVEMENT WITH VARIABLE THICKNESS, 0.10" MIN.
- 2 CONSTRUCT STRUCTURAL SECTION OF ~~ASPHALT CONCRETE~~ OVER NATIVE SOIL OR 0.32' A.C. OVER 1.36' D.G. BASE MATERIAL, FOR ARLINGTON AVENUE.
- 3 REMOVE EXISTING PAVEMENT, REPLACE WITH STRUCTURAL SECTION.
- R REMOVE ENTIRE TREE. CLASS I 6" TO 18" DIA. CLASS II OVER 18" TO 36" DIA. CLASS III OVER 36" DIA.
- 4 CONSTRUCT STRUCTURAL SECTION OF ~~ASPHALT CONCRETE~~ OVER NATIVE SOIL OR 0.30' A.C. OVER 0.55' D.G. BASE MATERIAL, FOR PHOENIX AVENUE.

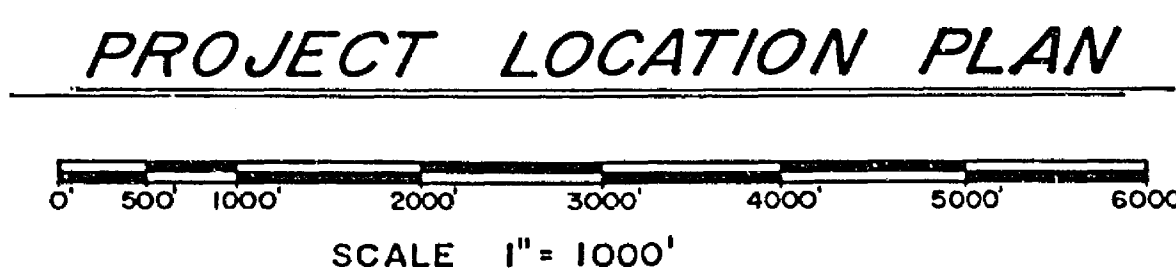
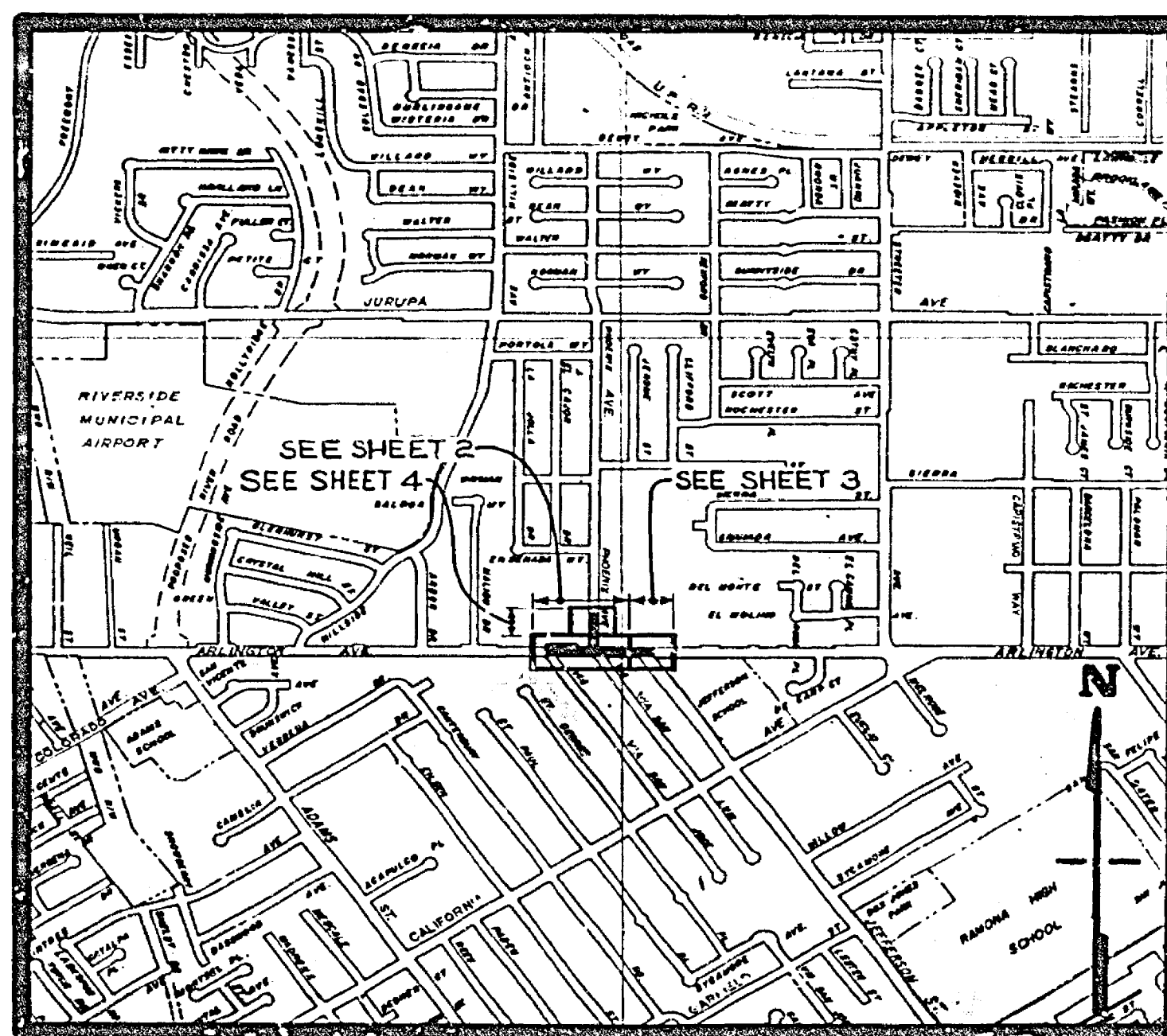


EXISTING CULTURE AND UNDERGROUND LEGEND

- EXISTING UNDERGROUND UTILITIES**
- SANITARY SEWER — 6" S — TELEPHONE CONDUIT — T — T —
 - WATER LINE — 6" W — ELECTRICAL CONDUIT — E — E —
 - STORM DRAIN — 24" D — STREET LIGHTING — SL — SL —
 - IRRIGATION LINE — 20" IRR — TELEPHONE MH OR VAULT — TM — TM —
 - GAS LINE — 3" G — FIRE ALARM — F — F —
 - TRAFFIC SIGNAL — SIG — SIG —
- EXISTING TOPOGRAPHY**
- BLOCK WALL ————
 - BOARD FENCE ————
 - WIRE FENCE ————
 - CHAIN LINK FENCE ————
 - TOP OF SLOPE ————
 - TOE OF SLOPE ————
 - DIRECTION OF FLOW ————
- UTILITIES AND STRUCTURES**
- SANITARY SEWER MH
 - SANITARY SEWER CLEANOUT
 - STORM DRAIN MH
 - IRRIGATION WEIR
 - WATER MH
 - GAS MH
 - ELECTRIC MH
 - TELEPHONE MH OR VAULT
 - WATER METER
 - FIRE HYDRANT
 - SPRINKLER HEAD
 - VALVE
 - POWER POLE
 - POLE & GUY ANCHOR
 - PULL BOX
 - TRAFFIC SIGN
 - PARKING METER
 - FIRE ALARM BOX
 - STREET NAME SIGN
 - GAS METER
 - MAIL BOX
 - HYDRANT OR FAUCET
 - RAILROAD TRACKS
 - RAILROAD SIGN
 - RAILROAD SIGNAL
 - STREET LIGHT (UPRIGHT)
 - STREET LIGHT
 - TRAFFIC SIGNAL
 - TRAFFIC SIGNAL ON MAST ARM
 - TRAFFIC SIGNAL CONTROL BOX
 - TRAFFIC SIGNAL DETECTOR
 - PEDESTRIAN CONTROL FOR TRAFFIC SIGNAL
 - CONCRETE
 - ASPHALT
 - EDGE OF PAVEMENT
 - BUILDING
 - UNDERGROUND OR OVERHANGING STRUCTURE
 - TREE
 - PALM
 - SHRUBBERY
 - TREE STUMP

GENERAL CONSTRUCTION NOTES

1. EXACT LOCATIONS AND DEPTHS OF UNDERGROUND UTILITIES ARE UNKNOWN. THE LOCATIONS AND DEPTHS SHOWN ON THIS PLAN ARE FROM UTILITY RECORDS. THE CONTRACTOR IS REQUIRED TO TAKE DUE PRECAUTIONARY MEASURES TO LOCATE AND PROTECT ALL UNDERGROUND FACILITIES WHETHER OR NOT SHOWN ON PLAN. WHERE THE COVER TO THE TOP OF A UTILITY IS KNOWN, IT IS SHOWN IN THE PROFILE. IF COVER IS UNKNOWN THE UTILITY IS SHOWN IN THE PROFILE BY: _____
2. THE CONTRACTOR SHALL BE RESPONSIBLE TO REPAIR OR REPLACE IN KIND AT HIS OWN EXPENSE ANY IMPROVEMENTS DAMAGED BY HIS OPERATIONS DURING CONSTRUCTION.
3. WHERE NEW CONSTRUCTION IS INDICATED:
 (A) CLEAR AND GRUB
 (B) REMOVE EXISTING CURB, GUTTER AND SIDEWALK
 (C) REMOVE ALL EXISTING A.C. PAVEMENT EXCEPT WHERE OVERLAY OF EXISTING PAVEMENT IS SHOWN ON THE PLAN.
4. SEWER LATERALS WITHIN 10' OF THE PROPOSED STRUCTURAL SECTION SHALL BE COVERED AND/OR ENCASED PER ALTERNATES AND NOTES SHOWN AT RIGHT ON THIS SHEET.
5. TRAFFIC SIGNS REMOVED DURING CONSTRUCTION SHALL BE SALVAGED BY THE CONTRACTOR AND RELOCATED AS DIRECTED BY THE INSPECTOR.
6. CURB AND GUTTER, SIDEWALK, AND DRIVEWAY REMOVAL SHALL BE TO THE LIMITS SHOWN ON THE PLAN OR TO THE NEAREST CONSTRUCTION JOINT BEYOND THE PLAN LIMITS AS DIRECTED BY THE INSPECTOR.
7. WHERE NEW SIDEWALK OR DRIVEWAY MEETS OR REPLACES EXISTING SIDEWALK OR DRIVEWAY, JOINTS SHALL BE MATCHED TO EXISTING.
8. TRANSITION NEW CONSTRUCTION TO MEET EXISTING FACILITIES AS DIRECTED BY THE INSPECTOR.
9. ADJUST ALL SEWER AND STORM DRAIN MANHOLES TO FINISH GRADE.
10. ALL ELEVATIONS SHOWN ON THE PLAN SHALL BE STAKED IN THE FIELD.
11. UTILITIES IN CONFLICT WILL BE RELOCATED BY OTHERS PRIOR TO CONSTRUCTION.



* "AS BUILT" 4-23-75 J.P.G.

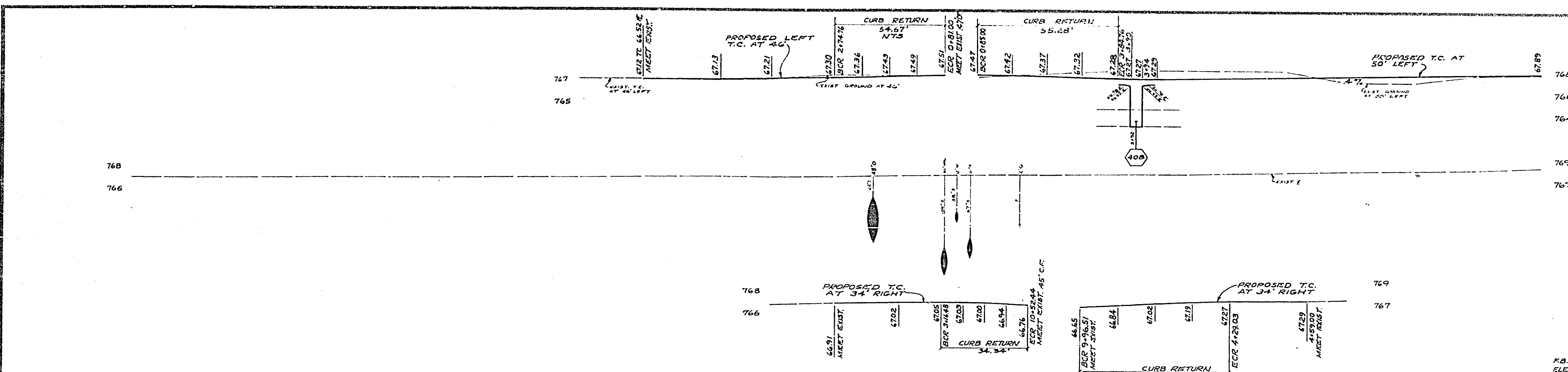
CITY OF RIVERSIDE, CALIFORNIA
 PUBLIC WORKS DEPARTMENT

**Arlington Avenue
 Widening
 at Phoenix**

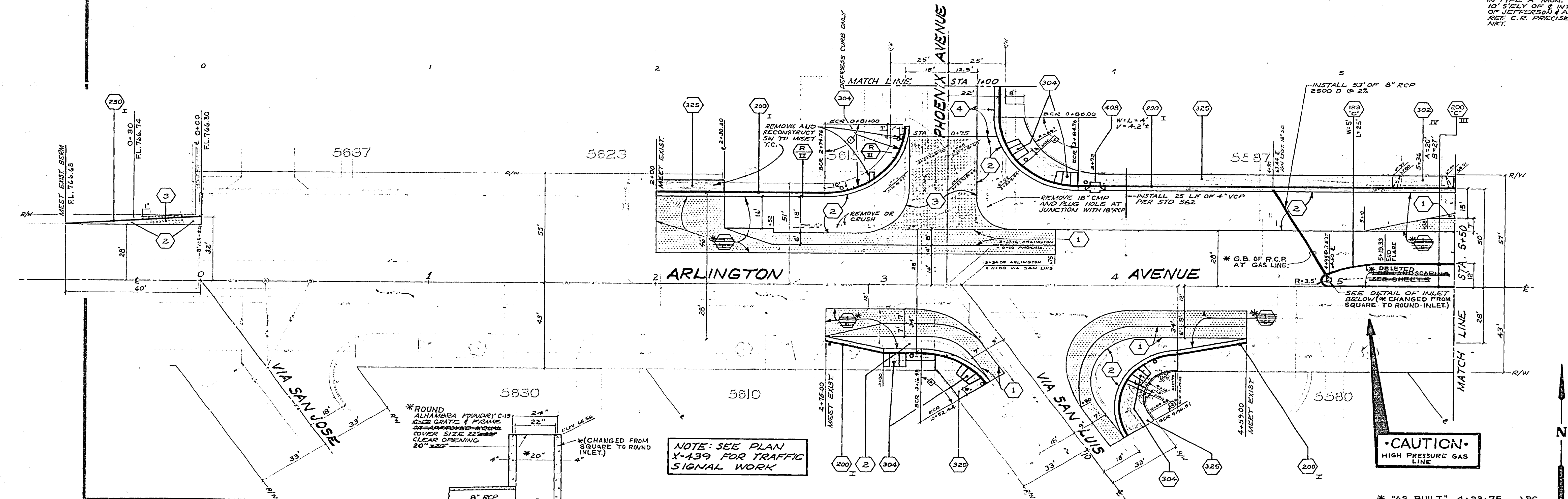
ACCOUNT No. 30-573-265-09
 DRAWING NUMBER
R-1729
 SHEET 1 OF 5

APPROVED BY: [Signature]
 DATE: 7/25/74

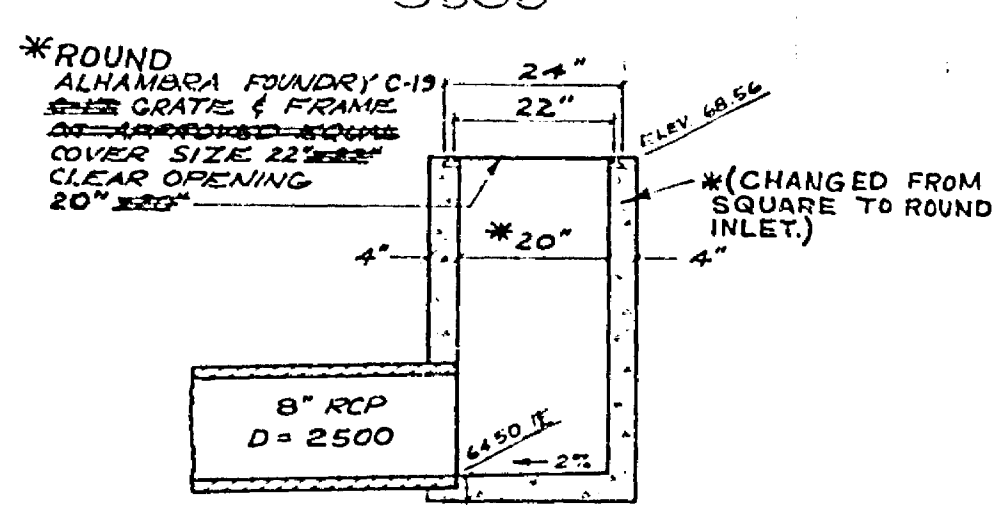
DESIGNED BY: [Signature] DRAWN BY: [Signature] CHECKED BY: [Signature]



FB-965/47
ELEV-767.86
BM-BRASS DISK STAMPED 65-E
IN TYPE 'A' MON. VAULT.
10' S'ELY OF E INTERSECTION
OF JEFFERSON & ARLINGTON.
REF C.R. PRECISE LEVEL
NET.



CAUTION
HIGH PRESSURE GAS LINE



NOTE: SEE PLAN X-439 FOR TRAFFIC SIGNAL WORK

CURVE DATA				
INDEX	R	Δ	T	L
①	35'	89°30'00"	34.70'	54.47'
②	35'	90°30'00"	35.81'	55.23'
③	27'	123°46'48"	50.54'	58.33'
④	35'	56°13'12"	18.70'	34.34'

CAUTION
PACIFIC TELEPHONE
CABLES UNDERGROUND
BEFORE EXCAVATING
CALL COLLECT:
7:30 A.M. to 5 P.M. & Holidays
After Hours
Orange County: 714-833-0811, 714-547-6655
Riverside County: 714-884-0271, 714-947-6658

CITY OF RIVERSIDE
PUBLIC WORKS DEPARTMENT

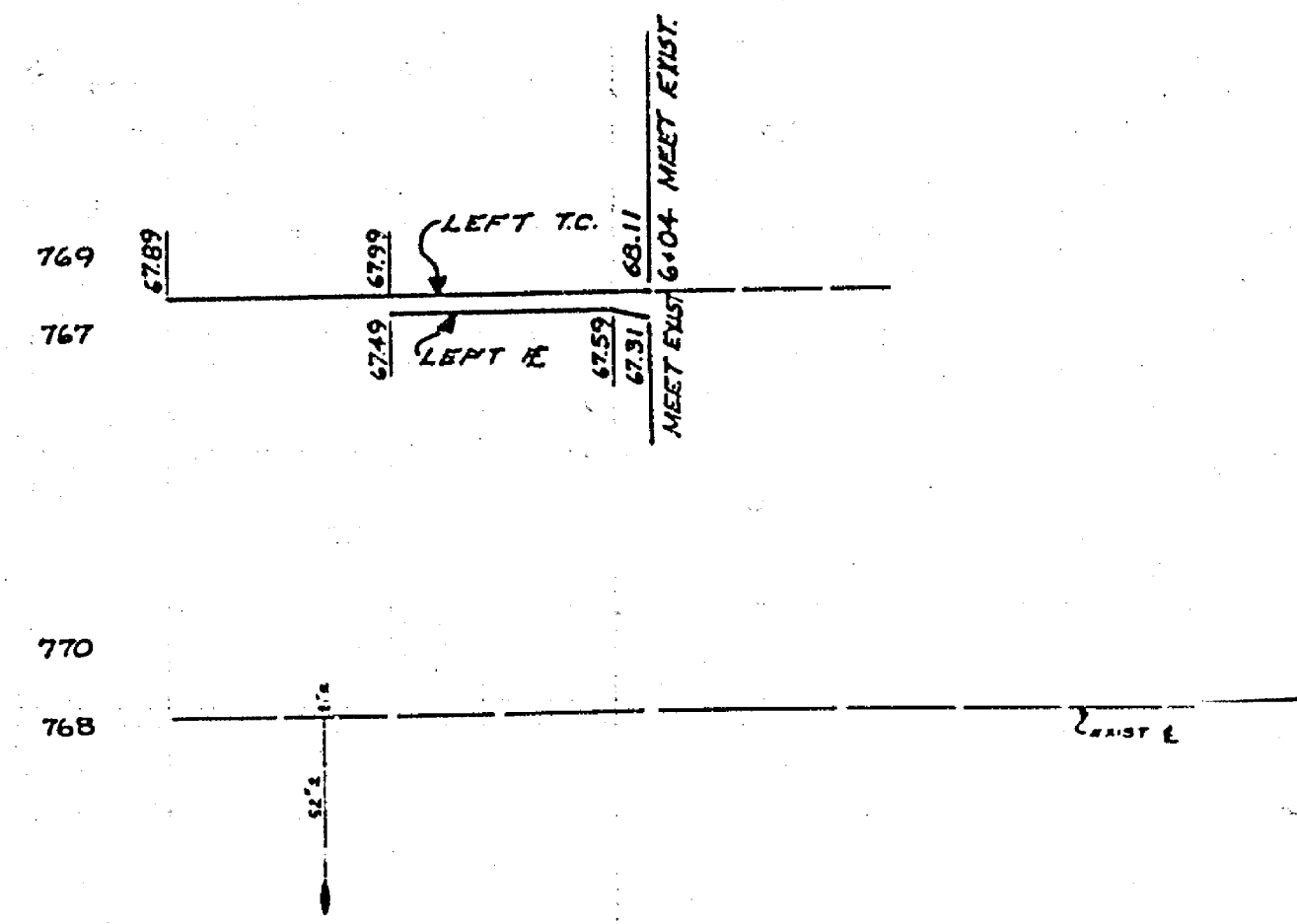
Arlington Avenue Widening
at Phoenix

APPROVED BY: *William J. Gardner*
PUBLIC WORKS DIRECTOR

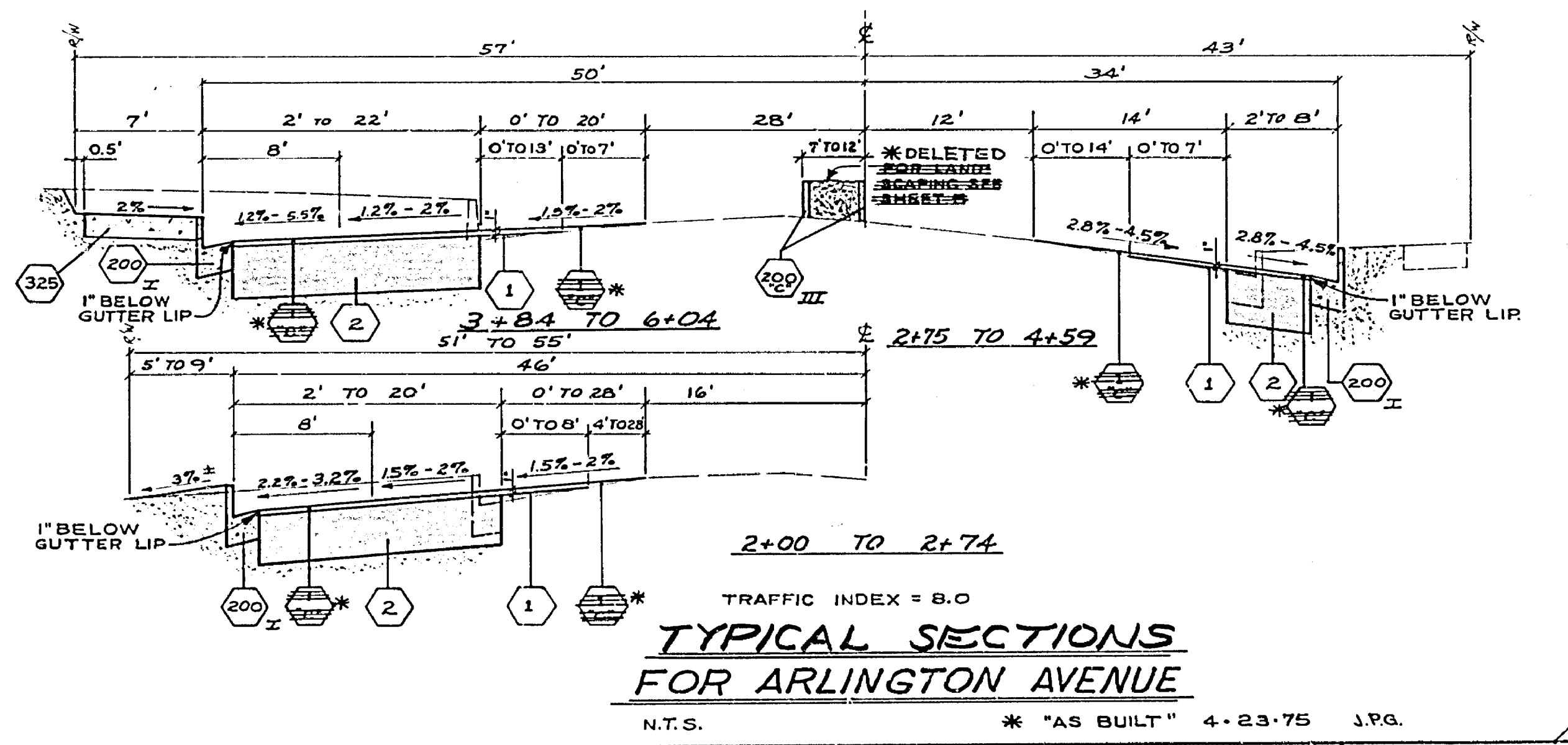
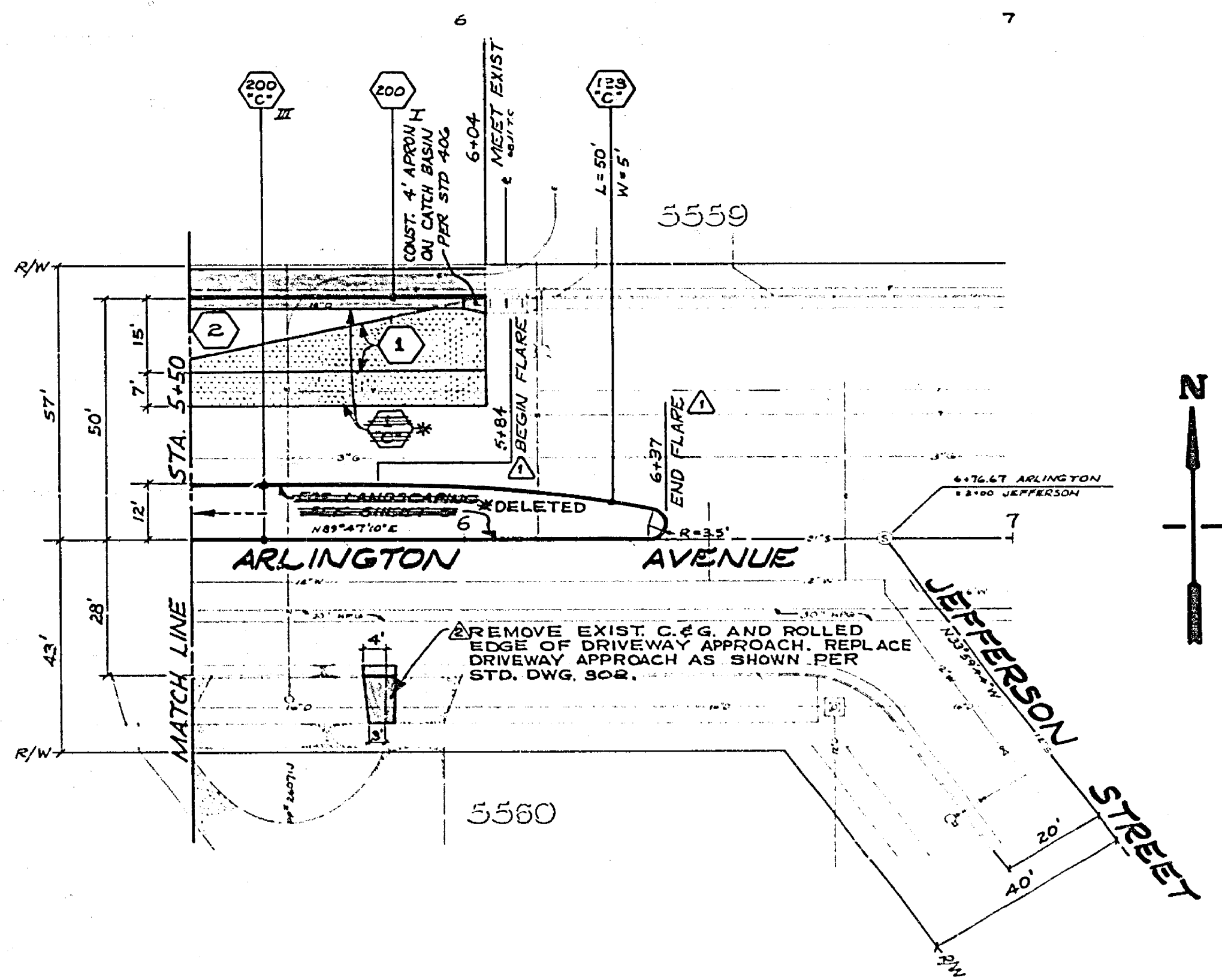
DATE: 7/25/74

* "AS BUILT" 4-23-75 J.P.G.

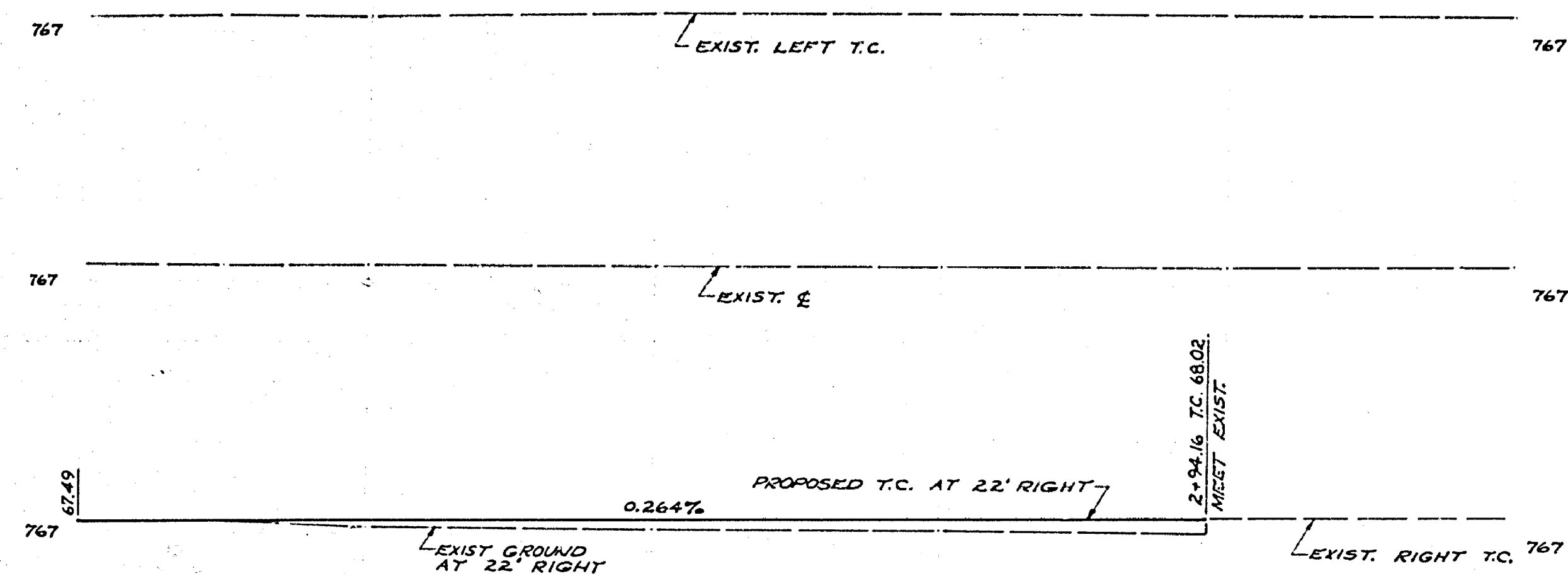
ACCOUNT NO. 30-575-265-09
R-1729
SHEET 2 OF 5
FILE NO.



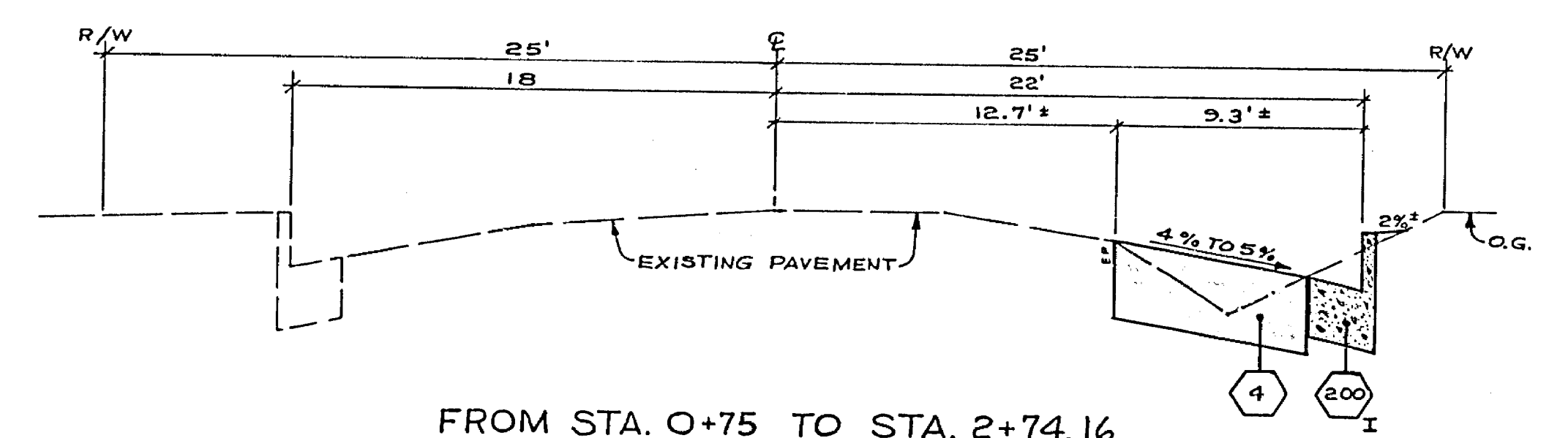
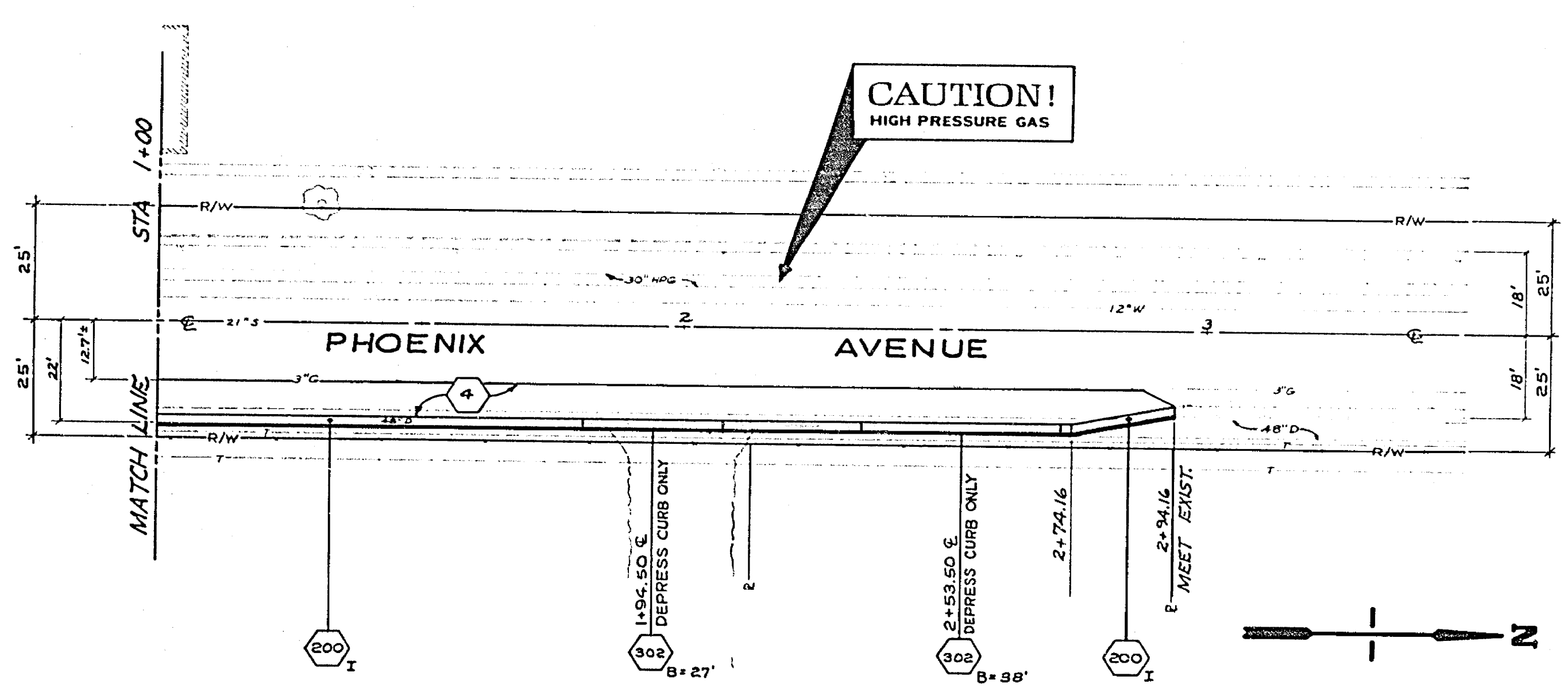
F.B. - 965/67
 ELEV. - 767.86
 B.M. - BRASS DISK, STAMPED G5-E
 IN TYPE 'A' MON. VAULT, 10"
 S'ELY. OF E. INTERSECTION
 OF JEFFERSON & ARLINGTON
 REF. C.R. PRECISE LEVEL
 NET.



△ MOVED END OF MEDIAN FROM 6+50 TO 6+37 △ WIDEN DRIVEWAY APPROACH PER C.O. N21	CITY OF RIVERSIDE PUBLIC WORKS DEPARTMENT	Arlington Avenue Widening at Phoenix	ACCOUNT NO. 30-575-263-09 R-1729 SHEET 3 OF 5 FILE NO.
DESIGNED BY: D.L. DRASH/STP CHECKED BY: J.C. FERRIS/STP	APPROVED BY: William S. Anderson PUBLIC WORKS DIRECTOR	DATE: 7/25/74	HORIZ. SCALE: 1" = 20' VERT. SCALE: 1" = 4'



F.B. - 965/67
 ELEV. - 767.86
 B.M. - BRASS DISK STAMPED G5-E
 IN TYPE "A" MON. VAULT 10'
 S'ELY OF & INTERSECTION
 OF JEFFERSON & ARLINGTON.
 REF. C.R. PRECISE LEVEL
 NET.



FROM STA. 0+75 TO STA. 2+74.16

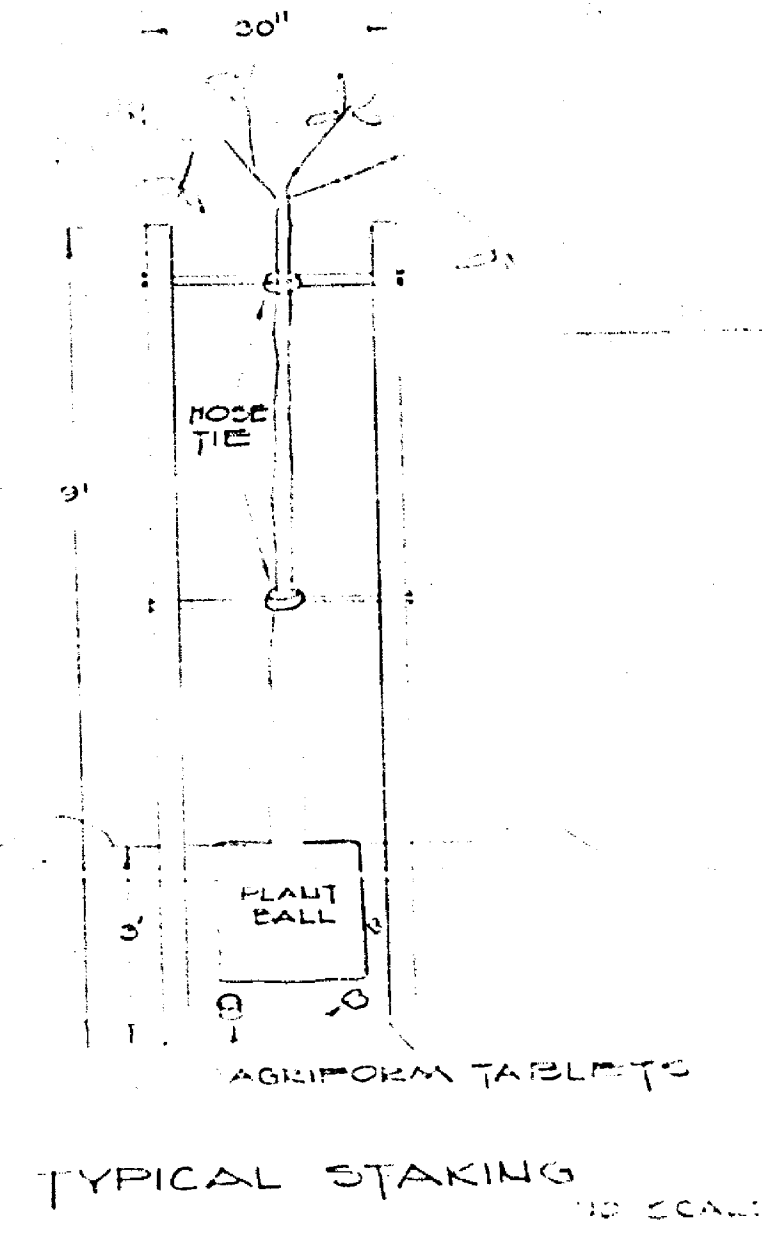
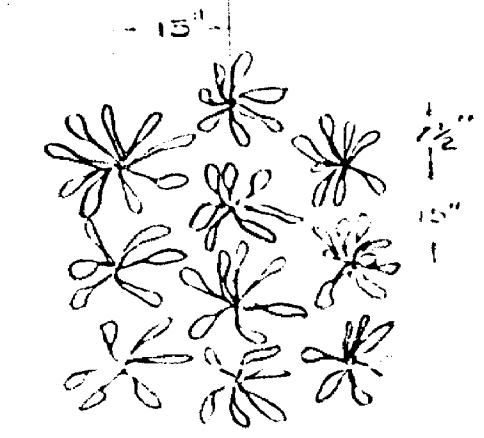
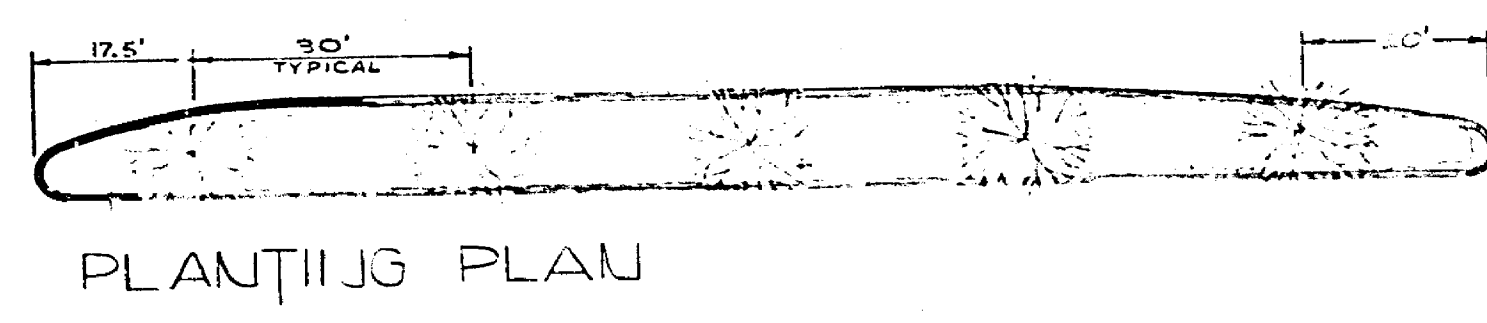
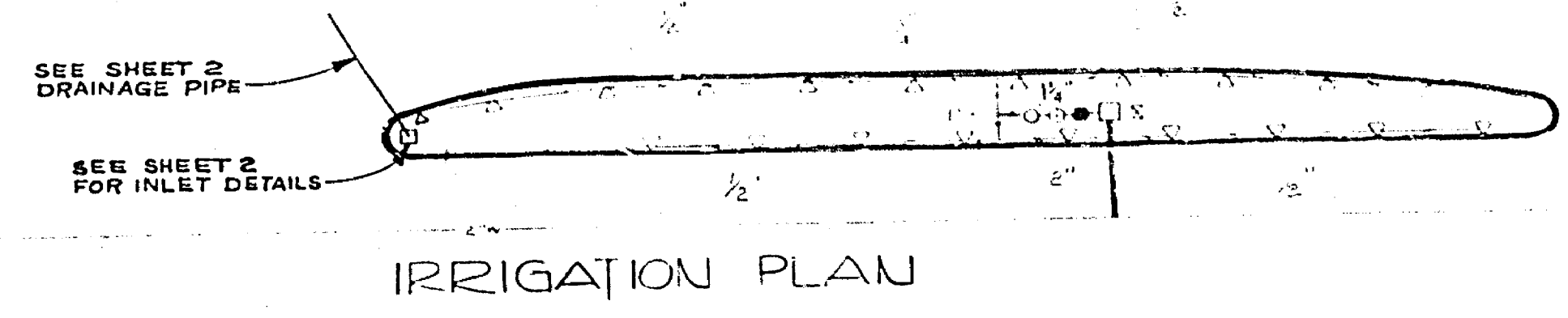
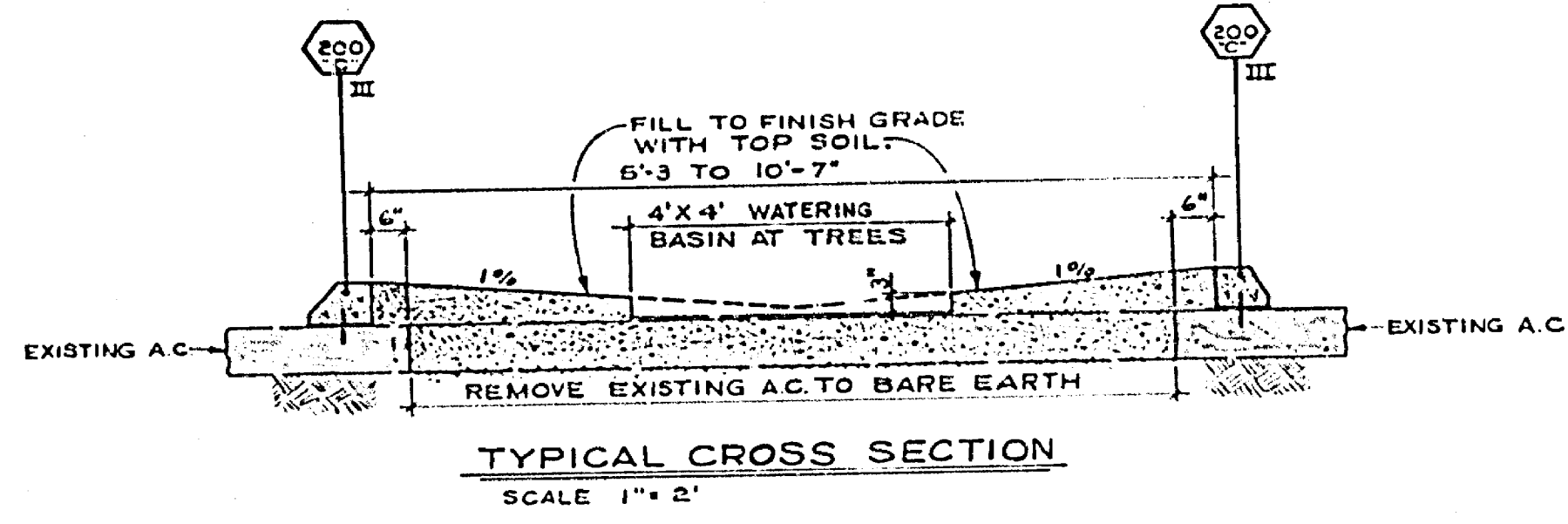
TRAFFIC INDEX = 6.0

**TYPICAL SECTIONS
 FOR PHOENIX AVENUE**

N.T.S. * "AS BUILT" 4-23-75 J.P.G.

-CAUTION-
PACIFIC TELEPHONE
CABLES UNDERGROUND
BEFORE EXCAVATING
CALL COLLECT:
 7:30 A.M. to 5 P.M. & Holidays
 Orange County 714-833-0811 714-347-6608
 Riverside County 714-944-0071 714-347-6608

CITY OF RIVERSIDE PUBLIC WORKS DEPARTMENT		Arlington Avenue Widening at Phoenix		R-1729
APPROVED BY PUBLIC WORKS DIRECTOR <i>William D. Hester</i>	DATE 7/25/74	HORIZ. SCALE: 1" = 20' VERT. SCALE: 1" = 4'	ACCOUNT NO 30-575-265-09 SHEET 4 OF 5 FILE NO	



AGRIFORM TABLETS

TYPICAL STAKING
NO SCALE

QUANTITY	PLANTING LIST
5	TREES - LARGES (EUONIA INDICA ROSEA LAVENDER) 24" BOX
17 FLATS OR 970 PLANTS	GROUNDCOVER - OSTEOSPERMUM FRUTICOSUM AT 2" GAUGES (LAVENDER)
30 LBS	FERTILIZER - CONSIST OF 14% NITROGEN, 14% PHOSPHORIC ACID, & 7% POTASH TO BE DISTRIBUTED AT 20 LBS PER 1000 SQ FT
20	TREE FERTILIZER 20-10-5 AGRIFORM 3.1 GRAM TABLETS AT THE RATE OF ONE TABLET FOR EACH ONE INCH OF TRUNK DIAMETER
3 CY.	REDWOOD SHAVINGS - 2 CU YDS PER 1000 SQ FT
	SOIL TO BE CULTIVATED TO A DEPTH OF 6"

QUANTITY	IRRIGATION	LEGEND
21	▽	BUCKNER III-POP-UP HEAD #403 HPHU
1	□	WATER WATCH CONTROLLER WW-1
1	+	1" WATER WATCH CONTROL VALVE WWV-100FC
1	~	1/4" SMR P-711 PRESSURE TYPE VACUUM BREAKER
1	●	1/4" CRISWOLD PRESSURE REDUCING VALVE # 2250
	—	1" MAIN LINE
15 LF #	—	SCHEDULE 40 GALVANIZED PIPE
292 LF #	—	SCHEDULE 40 PIPE SIZE INDICATED
1	□	1" METER
1		ELECTRICAL HOOKUP

*LANDSCAPING OF MEDIAN WAS DELETED FROM THIS CONTRACT.

*"AS BUILT" 4-23-75 J.P.G.

FROM PARKS DEPT.	CITY OF RIVERSIDE, CALIFORNIA PUBLIC WORKS DEPARTMENT	Arlington Ave. Median at Phoenix	ACCOUNT No. 30-575-265-09 DRAWING NUMBER R-1729 SHEET 5 OF 5
APPROVED BY PRINCIPAL ENGINEER PARK DEPARTMENT	BY DATE 11/74 DIRECTOR OF PUBLIC WORKS	APPROVED BY <i>[Signature]</i> DATE 7/25/74	SCALE: 1" = 20'
REVISIONS	APPR. DATE	DESIGNED BY J.L.K. DRAWN BY G.R.K. CHECKED BY J.L.K.	