

BENCH MARK

(G-7-A) Elev. 967071. 24' unit top in center of SW curb return at Arlington & Victoria. City C.R. 233/24.

GENERAL NOTES

1. Construction shall be in accordance with the standard specifications for public works construction 1973 edition and per City of Riverside standard drawings.
2. All flagged elevations shall be staked in the field by the Engineer.
3. Curb and gutter to be staked at a 3' offset and at 25' intervals.
4. It shall be the responsibility of the contractor to clear the right of way in accordance with the provisions of law at all intervals each utility including irrigation lines and appurtenances and at no cost to the city.
5. Trim edge of exist. pavement where new pavement joins to a smooth straight line. Construct match-up paving as shown on plan to overlay existing and directed on the field to produce a smooth section. Engineer estimates overlay to be 100 tons.
6. All traffic signs shall be installed prior to opening the streets to traffic.
7. The Subdivider shall arrange for a soil test to be made by a soil Engineer after the streets have been prepared to rough grade. Depth of base material filling shall be determined by the City of Riverside design standards & test procedures.
8. See "Street Lighting Plans" for quantity and location of required street lights.

TRAFFIC SIGNAL CONSTRUCTION NOTES

- (Ref. Signal plan X-406)
1. All work shall conform to the January 1973 provisions of section 96 of the Standard Specifications of the State of California Department of Transportation applicable special provisions, the state standard plans, the City of Riverside applicable standard drawings and Street Light Specifications No. 119.
 2. All standards, pull boxes, loop detectors will be located in the field by the Traffic Engineering representative.
 3. Notify the Traffic Engineering representative at 707-7576 48 hours prior to the start of signal work.
 4. Install new conductors in runs 1-8 per schedule.
 5. Loop detectors shall be 6X6 with 3 turns and 1" coax cover over 1/4" top conductor.
 6. Intersect existing conduit runs #2 and #4 and extend into new #5 signal boxes. Relocate conduit run #3 as shown.
 7. Salvage and relocate existing standards and equipment. Remove foundations, concrete and bases.
 8. Install salvaged standards and equipment on new foundations and conduits.
 9. Install new signal pull box, loops and 1" conduit with 1/2" detector cable for OR, loop detector as shown.
 10. For conductor schedule see Signal plan X-406.

**-CAUTION-
HIGH PRESSURE GAS**

**TYPICAL SECTION
ARLINGTON AVENUE**
NO SCALE
T.I. = 8.0

**-CAUTION-
PACIFIC TELEPHONE
CABLES UNDERGROUND
BEFORE EXCAVATING
CALL COLLECT**

Orange County	714-633-0811	714-547-4906
Riverside County	714-684-0071	714-547-6806
San Bernardino County	714-684-0071	714-547-6806
San Diego County	714-621-3111	714-547-6806
San Francisco County	714-621-3111	714-547-6806
San Jose County	714-298-0593	714-232-0027

FOR FREE CABLE LOCATING SERVICE

ALBERT A. WEBB ASSOCIATES
CIVIL ENGINEERS
RIVERSIDE, CALIFORNIA

APPROVED BY: *[Signature]* DATE: 1/17/74
R.E. No. 2876

DESIGNED BY: *[Signature]* DRAWN BY: *[Signature]* CHECKED BY: *[Signature]*

CITY OF RIVERSIDE, CALIFORNIA
PUBLIC WORKS DEPARTMENT

APPROVED BY: *[Signature]* DATE: 1/17/74
PRINCIPAL ENGINEER
PARK DEPARTMENT
TRAFFIC DIVISION
CHIEF PUBLIC WORKS ENGINEER

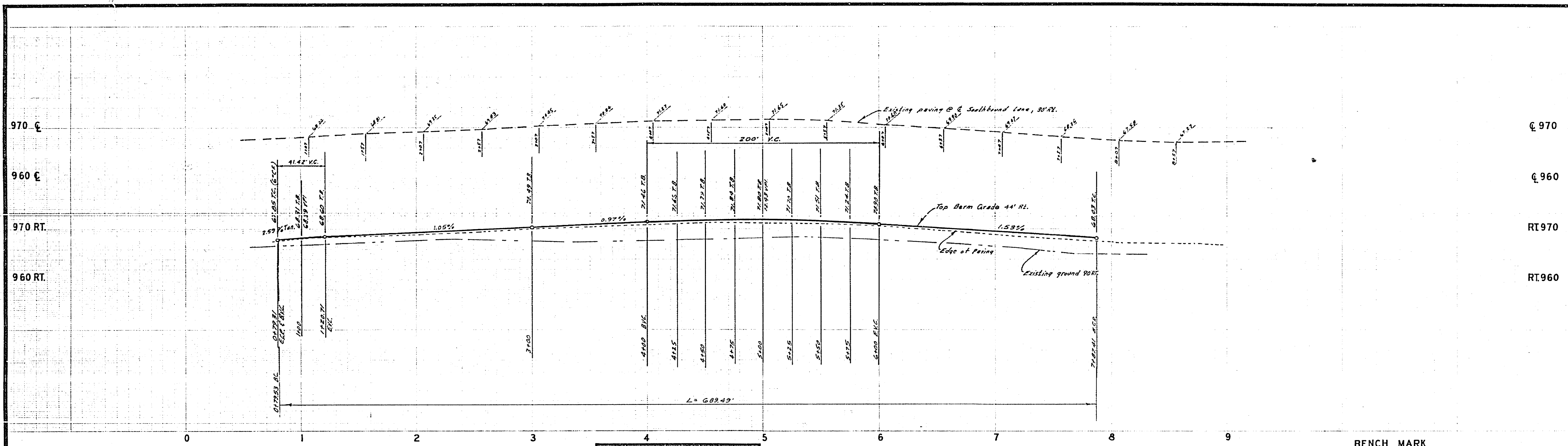
STREET PLAN AND PROFILE
ARLINGTON AVENUE

TRACT NO. 5311

SCALE: 1" = 40' Horiz., 1" = 8' Vert.

ACCOUNT NO.
DRAWING NUMBER
R-1742

SHEET 1 OF 3
73-9-A

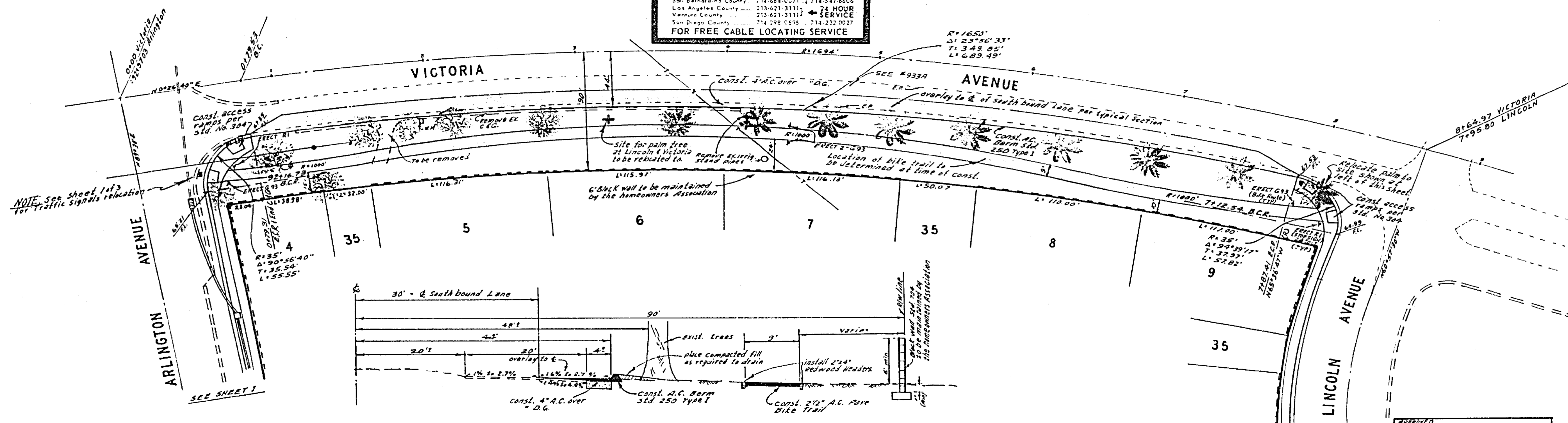


—CAUTION—
PACIFIC TELEPHONE
CABLES UNDERGROUND
BEFORE EXCAVATING
CALL COLLECT:

Orange County	714-633-6311	714-547-6626
Riverside County	714-684-0271	714-547-6626
Inyo County	714-684-0271	714-547-6626
San Bernardino County	714-684-0271	714-547-6626
Los Angeles County	213-621-3111	24 HOUR SERVICE
Ventura County	313-621-3111	
San Diego County	714-298-0555	714-232-0027

FOR FREE CABLE LOCATING SERVICE

BENCH MARK
 (6+7-A) Elev. 967.07, R.K. nail's log in center of S.W. curb return @ Arlington & Victoria C.R. F.D. 839/34



TYPICAL SECTION
VICTORIA AVENUE
 NO SCALE
 T.I. 7

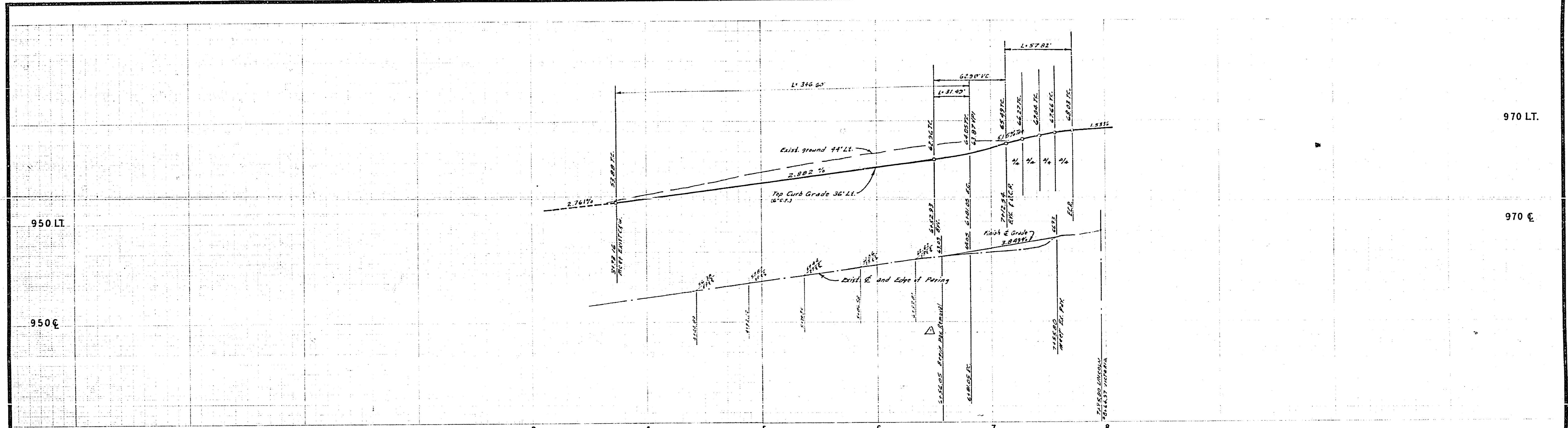
ALBERT A. WEBB ASSOCIATES
 CIVIL ENGINEERS
 RIVERSIDE, CALIFORNIA
 APPROVED BY: *P. N. J. OR* DATE: 1/16/76
 R.E. No. 2876

MARK	REVISIONS	APPR	DATE

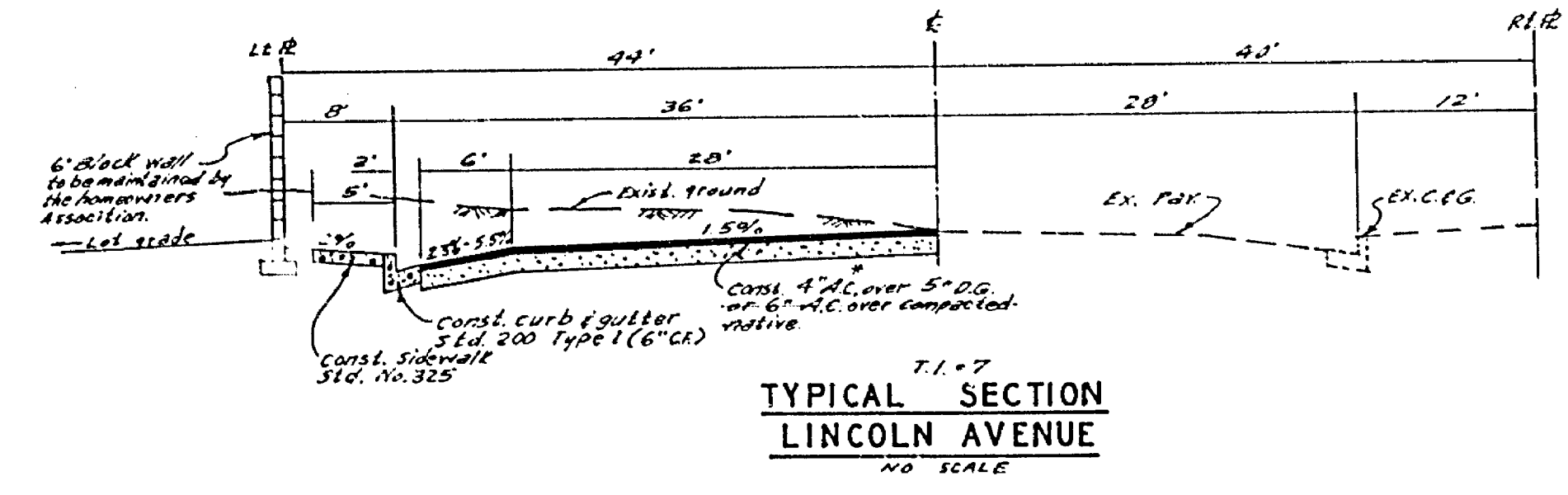
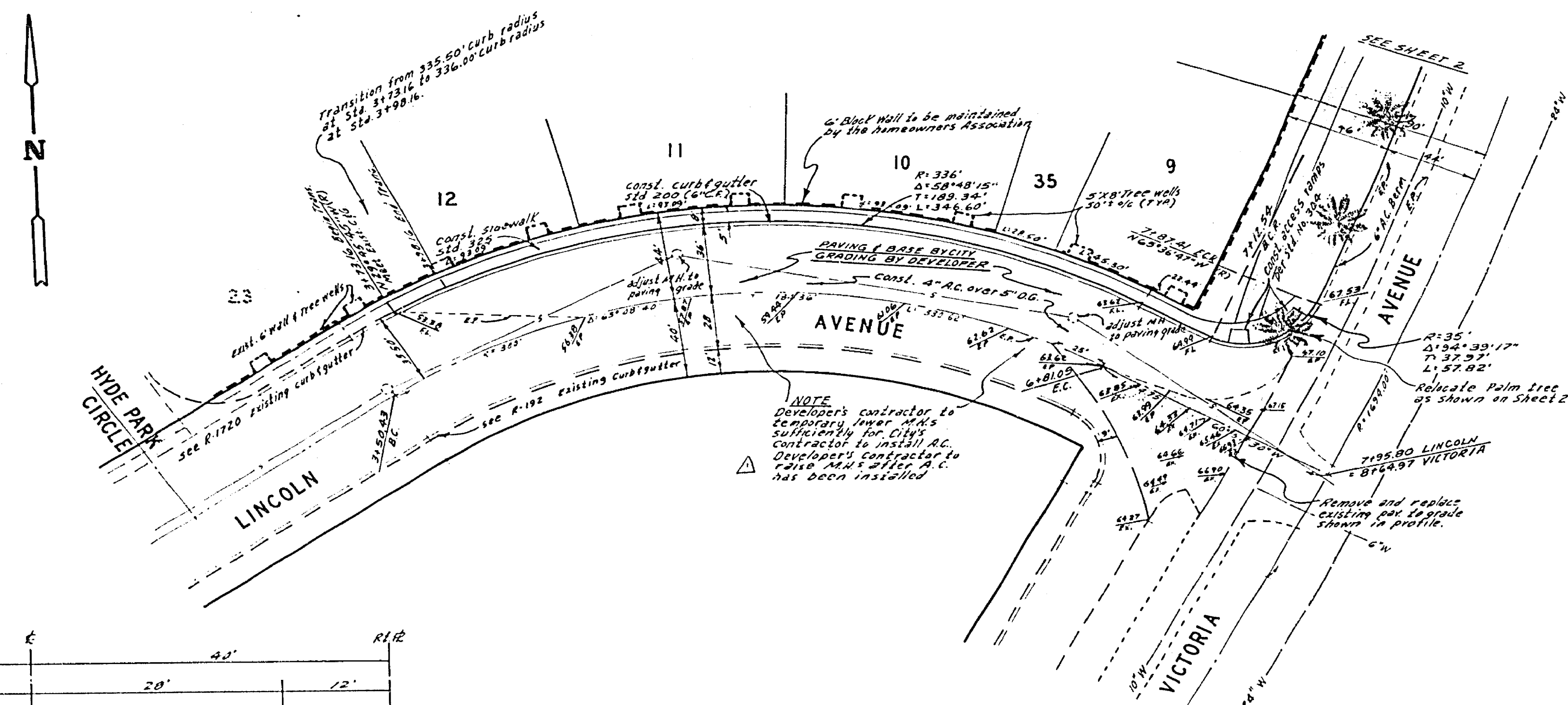
CITY OF RIVERSIDE, CALIFORNIA
PUBLIC WORKS DEPARTMENT
 APPROVED BY: *[Signature]* DATE: 1/16/76
 DIRECTOR OF PUBLIC WORKS
 DATE: 1/16/76

STREET PLAN AND PROFILE
VICTORIA AVENUE
TRACT NO. 5311
 SCALE: 1" = 40' Horiz., 1" = 8' Vert.

ACCOUNT NO. _____
 DRAWING NUMBER
R-1742
 SHEET 2 OF 3
 73-9-A



BENCH MARK
 (6+7.5) Elev 967.071, P.C. nail 12" in center of 3" curb return @
 Arlington & Victoria - C.R. 839134



ALBERT A. WEBB ASSOCIATES CIVIL ENGINEERS RIVERSIDE, CALIFORNIA APPROVED BY: <i>[Signature]</i> DATE: 9/16/75 R.E. No. 2876	CITY OF RIVERSIDE, CALIFORNIA PUBLIC WORKS DEPARTMENT APPROVED BY: <i>[Signature]</i> DATE: 9/16/75 PRINCIPAL ENGINEER TRAFFIC DIVISION CHIEF PUBLIC WORKS ENGINEER	STREET PLAN AND PROFILE LINCOLN AVENUE TRACT NO. 5311	ACCOUNT No. DRAWING NUMBER R-1742 SHEET 3 OF 3 73-9-A
		*AS BUILT 8.76 RPT SCALE: 1" = 40' Horiz., 1" = 6' Vert.	