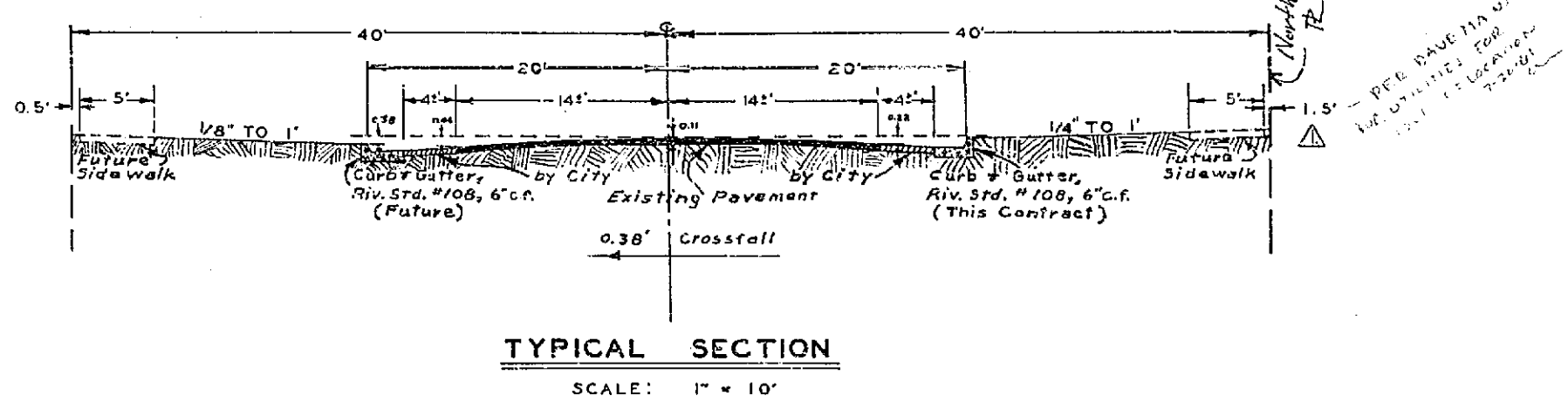
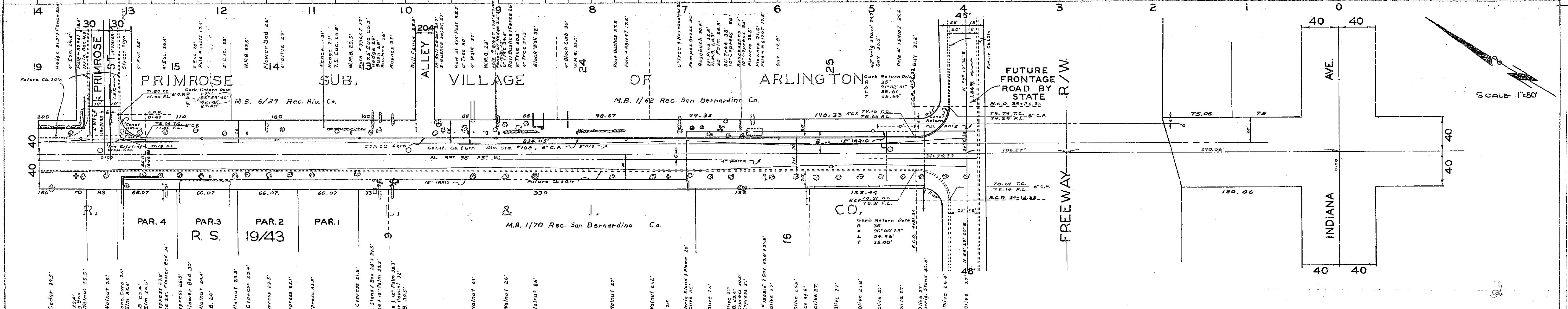


B.M. ELEV. 778.96 1/2" IRON BAR IN POLE #R8170T STA. 6+22.5
 B.M. ELEV. 771.84 1/2" IRON BAR IN POLE #S298J STA. 13+58.5
 F.B. 614 / 24-33
 SCALE: HOR. 1" = 50'
 VERT. 1" = 5'



NOTE: UTILITIES TO BE RELOCATED BY UTILITY COMPANY CONCERNED.
 TREES TO BE REMOVED BY CITY TO CLEAR CONSTRUCTION AREA PRIOR TO CURB & GUTTER CONSTRUCTION.

REVISIONS			CITY OF RIVERSIDE, CALIFORNIA DEPARTMENT OF PUBLIC WORKS	
MARK	DATE	DESCRIPTION		
Δ	7-21-61	Relocated Sidewalk of 10' & 8' 0"	HARRISON STREET IMPROVEMENT DIST. CURB & GUTTER PRIMROSE TO FREEWAY ELY SIDE	
DESIGNED BY W.D.G.		CHECKED BY J.L.B.	APPROVED BY <i>[Signature]</i> DIRECTOR OF PUBLIC WORKS	
DRAWN BY B.O.Y.D.			R-175 DATE Feb 25, 1948 SHEET 1 OF 1	
RECOMMENDED BY <i>[Signature]</i>		ASSISTANT CITY ENGINEER		

