

B.M. G2-D, ELEV. 800.874
 1/2" IR W/CS TAG @ E INTER
 OF ARLINGTON & MITCHELL
 REF. CR.FB. 83767

S CURVE DATA
 2120 TO 100' R=280'
 1144.34 L=51.78'

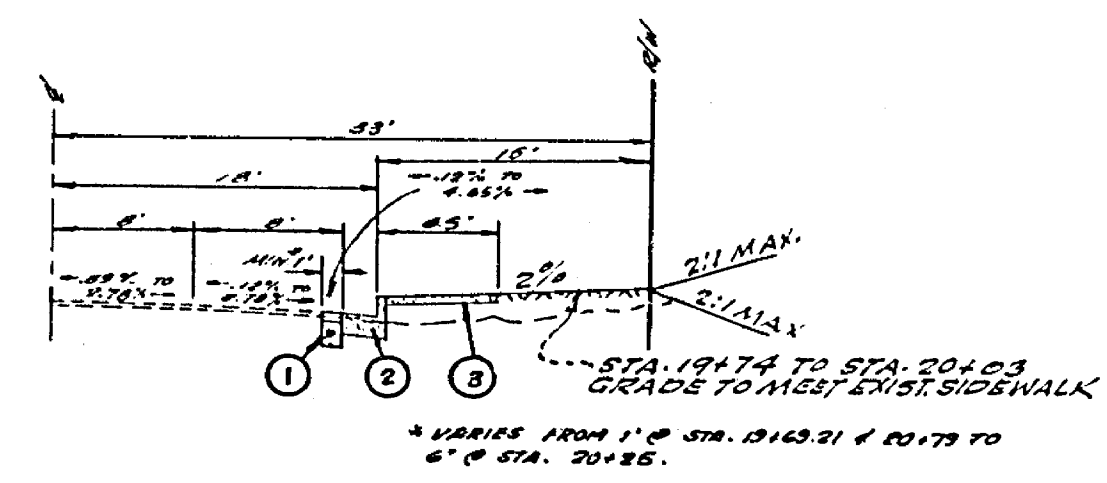
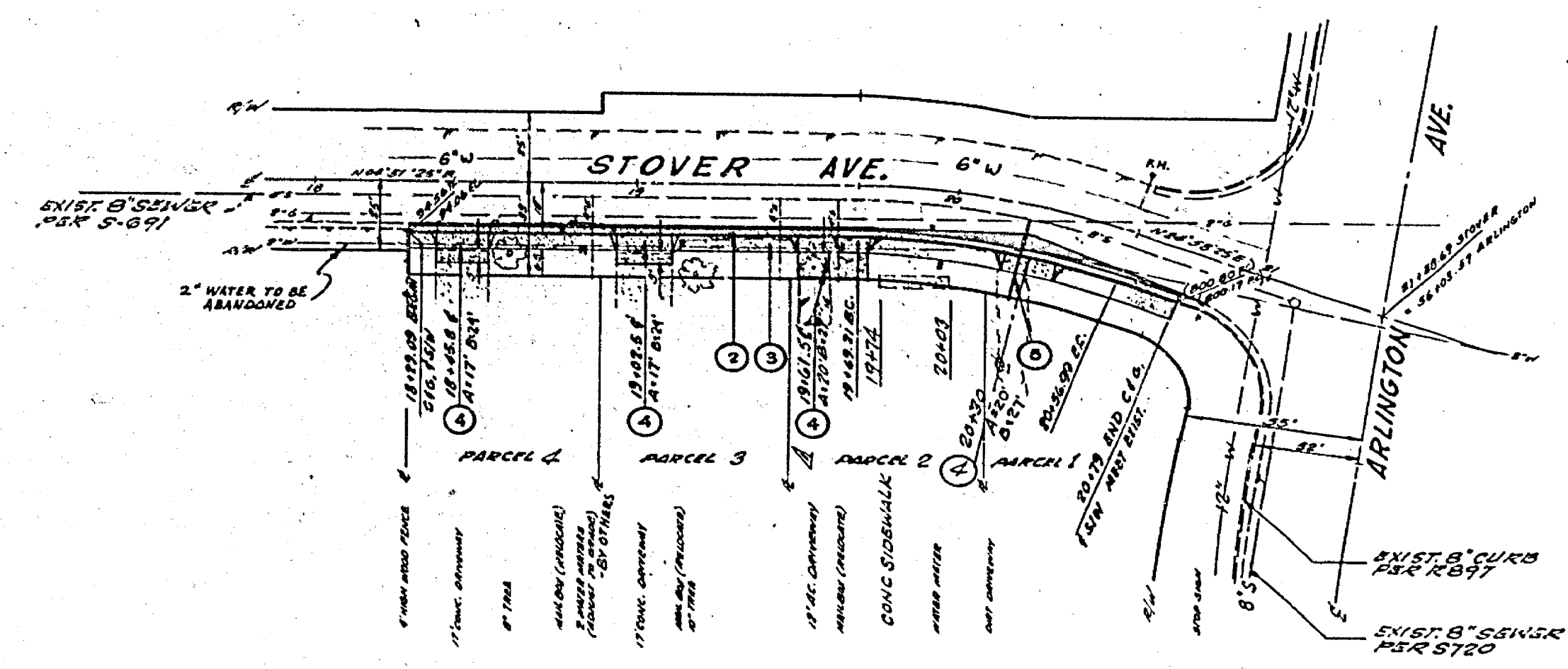
CURB CURVE DATA
 1. 10' 07" 00"
 41 09' 20"
 41 07' 40"
 144.15'

GENERAL NOTES

- IT SHALL BE THE RESPONSIBILITY OF THE CONTRACTOR TO CLEAR THE RIGHT OF WAY IN ACCORDANCE WITH THE PROVISIONS OF LAW AS IT AFFECTS EACH UTILITY INCLUDING IRRIGATION LINES AND APPURTENANCES AND AT NO COST TO THE CITY.
- CONSTRUCTION SHALL BE IN ACCORDANCE WITH THE CITY OF RIVERSIDE DEPARTMENT OF PUBLIC WORKS STANDARD DRAWINGS AND PER STANDARD SPECIFICATIONS FOR PUBLIC WORKS CONSTRUCTION, 1973 EDITION.
- TRIM EDGES OF EXIST. PAVEMENT WHERE NEW PAVING JOINS EXIST. PAVEMENT TO A CLEAN STRAIGHT LINE. CONSTRUCT MATCH UP PAVING AS SHOWN AND OVERLAY AS DIRECTED IN THE FIELD TO PRODUCE A SMOOTH CROWN SECTION.
- CONSTRUCTION STAKES TO BE 3' BEHIND CURB AT 20' INTERVALS.
- CONTRACTOR SHALL CONTACT WATER DIVISION - DENNIS SIMS, PHONE 787-7811 TWO (2) WEEKS PRIOR TO CONSTRUCTION. CONTRACTOR SHALL COORDINATE CONSTRUCTION WITH WATER DIVISION'S PIPELINE REPLACEMENT.

CONSTRUCTION NOTES

- CONST. 2 1/2" A.C. OVER 10" D.G. BASE, OR 7" A.C. FULL DEPTH. R-VALUE 40 PER S.D. 683.
- CONST. CURB & GUTTER PER CITY STD. DWG. 200 - 6" C.F. OR AS NOTED IN PROFILE.
- CONST. CURB TYPE SIDEWALK PER CITY STD. DWG. 326.
- CONST. DRIVEWAY APPROACH PER CITY STD. DWG. 302 - REMOVE EXIST. DRIVEWAYS AS INDICATED ON PLAN FOR SMOOTH MBST.
- CONST. 4" VCP HOUSE LATERAL PER CITY STD. DWG. 464. CONTACT PUBLIC WORKS DEPT. PRIOR TO CONSTRUCTION FOR EXIST. "I" LOCATION.



TYPICAL SECTION - STOVER AVE.
 40' SCALE

* "AS BUILT" E.K. 11/75

CITY OF RIVERSIDE WATER DEPARTMENT APPROVED BY: <i>[Signature]</i> 4-22-74 DATE	HAWKINS, ROBERTSON & ASSOC. ENGINEERS & SURVEYORS APPROVED BY: <i>[Signature]</i> DATE: 4-2-74	CITY OF RIVERSIDE, CALIFORNIA DEPARTMENT OF PUBLIC WORKS APPROVED BY: <i>[Signature]</i> DATE: 5-2-74	CITY OF RIVERSIDE, CALIFORNIA DEPARTMENT OF PUBLIC WORKS APPROVED BY: <i>[Signature]</i> DATE: 5-2-74	PROJECT NO. STOVER AVE. 4 1/2" SIDE FROM ARLINGTON TO 310' S.W. FOR R.M. 176	PROJECT NO. R-1752 SHEET 2 OF 4 FILE NO. 74-2456
--	--	--	--	---	---