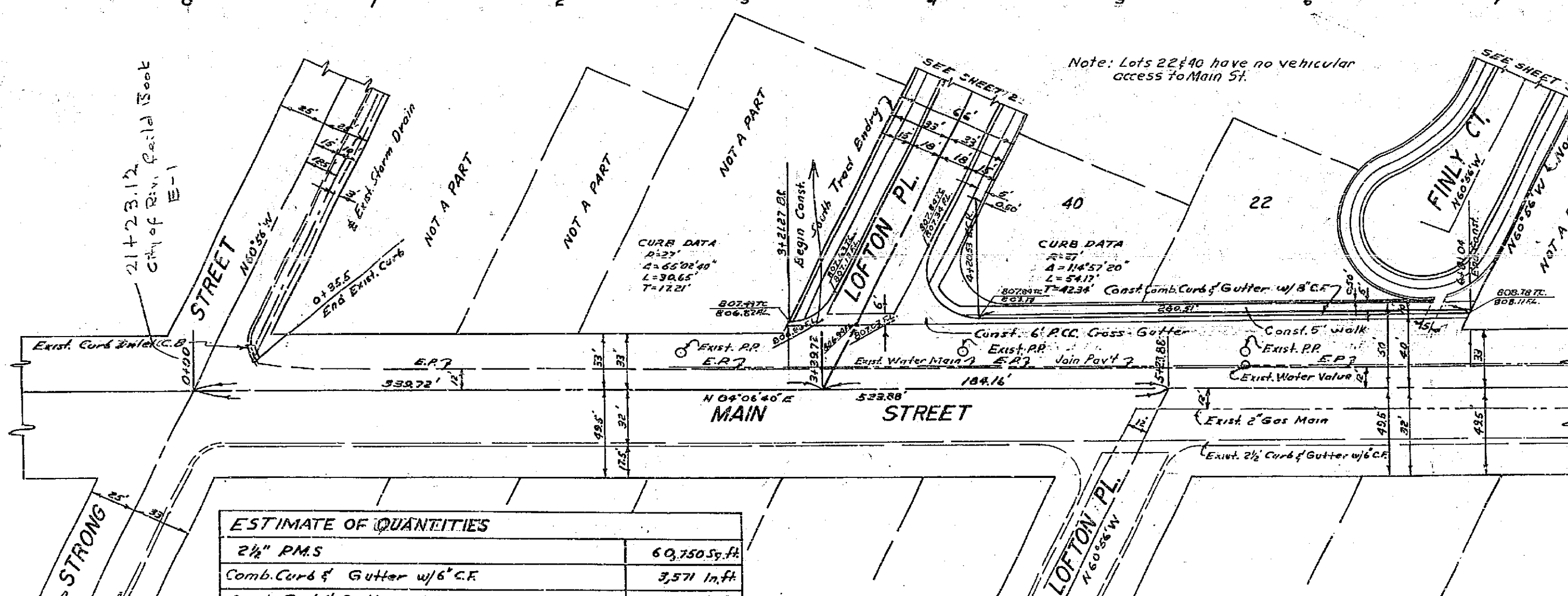


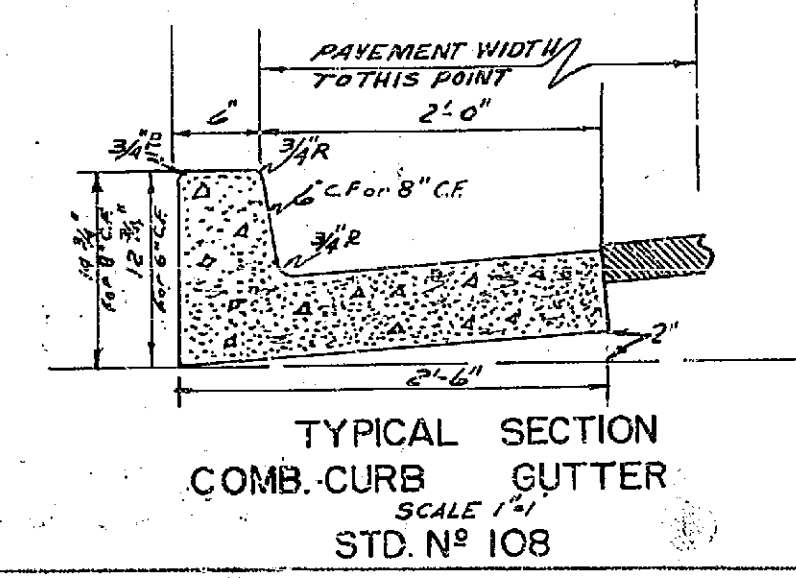
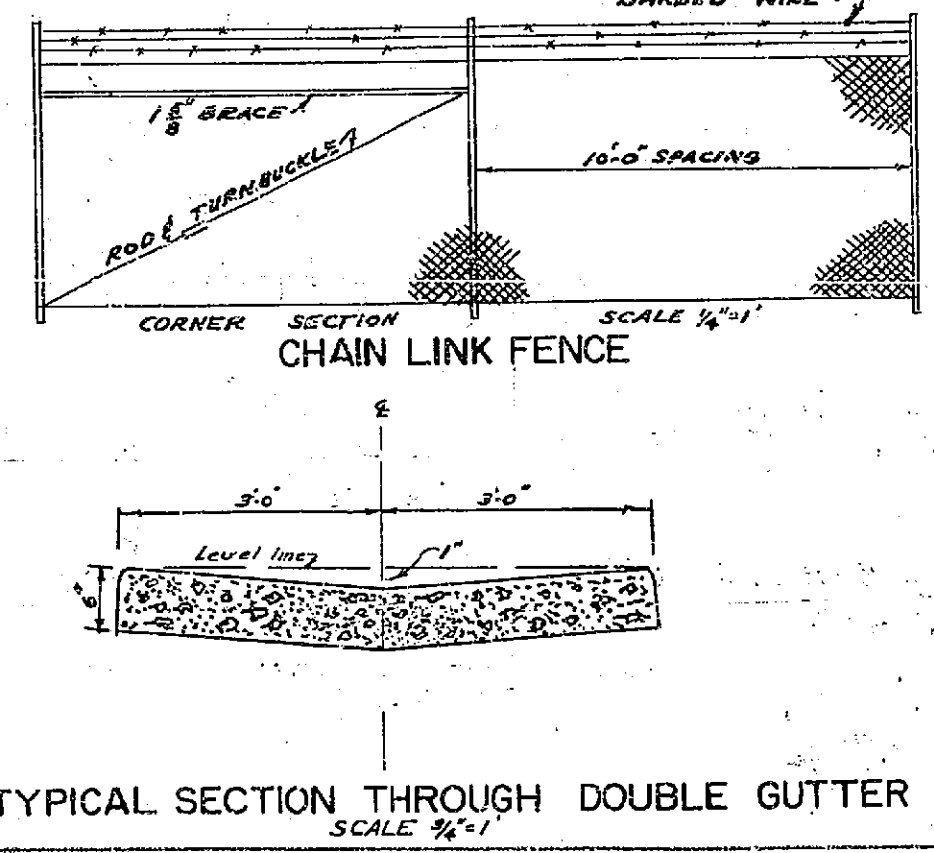
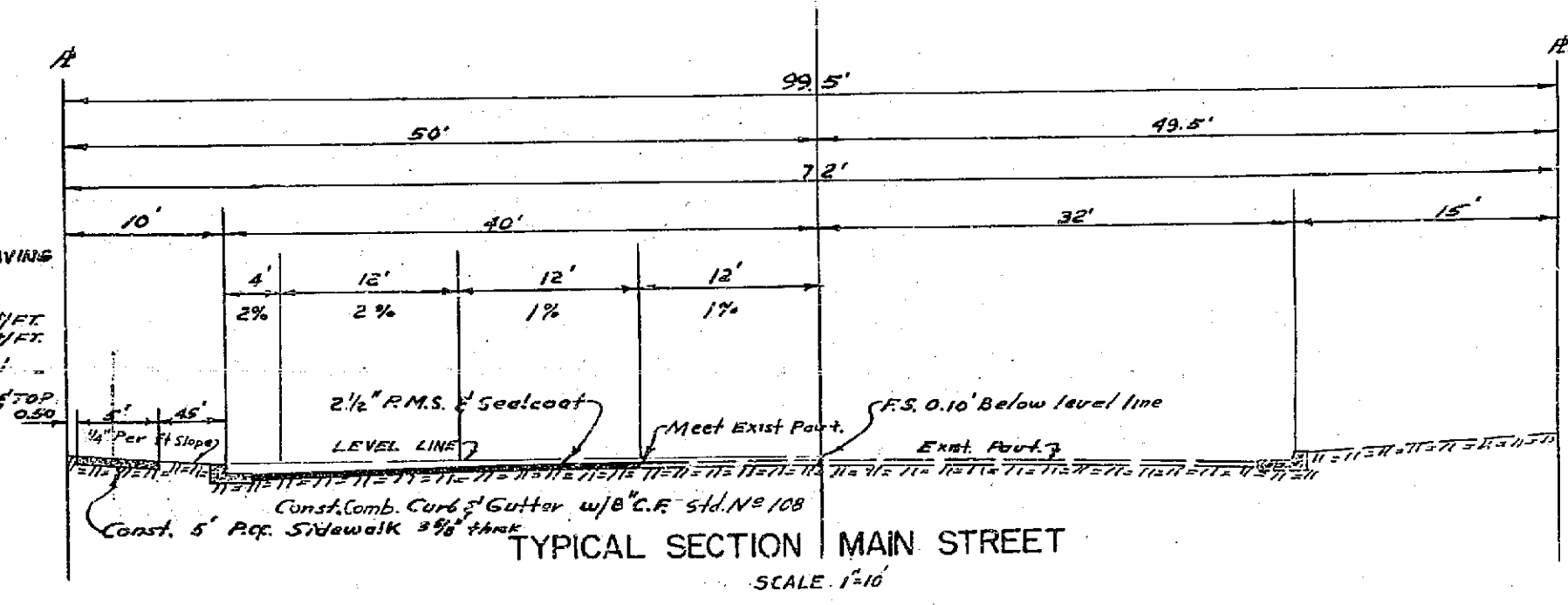
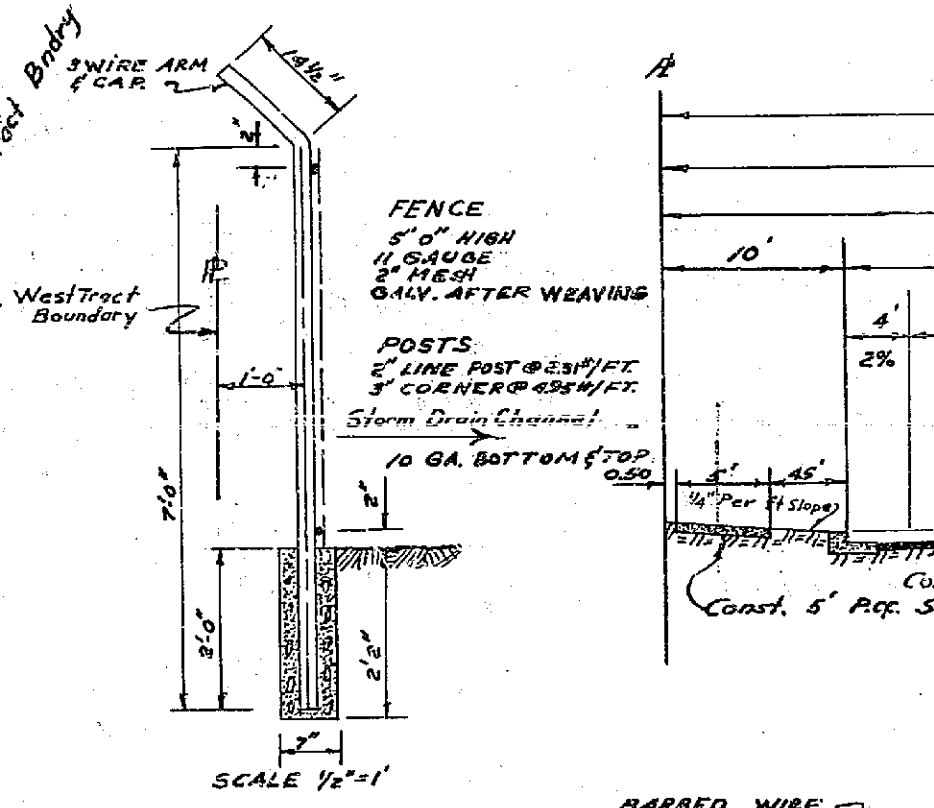
BENCHMARK
Lead of F.O.C. at E.C.R. of Southwest
corner of MAIN ST. and STRONG ST.
ELEVATION: 806.58

SCALE: HOR. 1"=50'
VERT. 1"=5'



ESTIMATE OF QUANTITIES	
2 1/2" PMS	60,350.55 ft
Comb. Curb & Gutter w/ 6" C.R.	3,571 in. ft
Comb. Curb & Gutter w/ 8" C.R.	261 in. ft
RCC. Cross Gutter w/ Apron	1,300 Sp. ft
5" Sidewalk 3/4" Thick	3,865 in. ft
Curb Inlet Catch Basins City Std. 180-D	2 ea
15" R.C.P. 30000	75 2 1/2 ft
6" Chain Link Fence	432 in. ft
Barricade	1 ea
Lot Excavation	4,600 yd ³
Street Excavation	5,400 yd ³
Concrete Apron	10 Sp. ft
Concrete Drain Pipe 15" dia.	145 in. ft.

NOTE: Utilities to be relocated by utilities company involved unless otherwise noted. Trees to be removed by Subdivider.



RIVERSIDE ENGINEERING CO. INC.
RIVERSIDE, CALIFORNIA
APPROVED BY *George O. Crawley* DATE 2-6-58

CITY OF RIVERSIDE, CALIFORNIA
DEPARTMENT OF PUBLIC WORKS

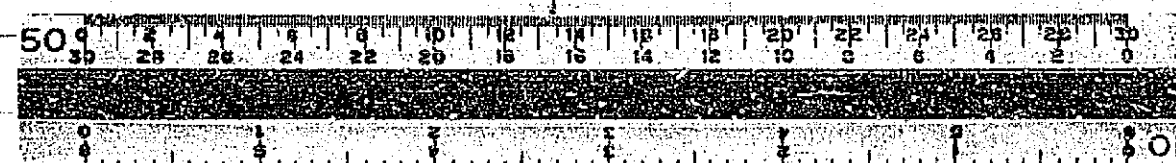
STREET PLAN & PROFILE
MAIN STREET 341.27 to 648.08

SUNCREST ESTATES

HORZ. SCALE 1"=50' VERT. SCALE 1"=5'

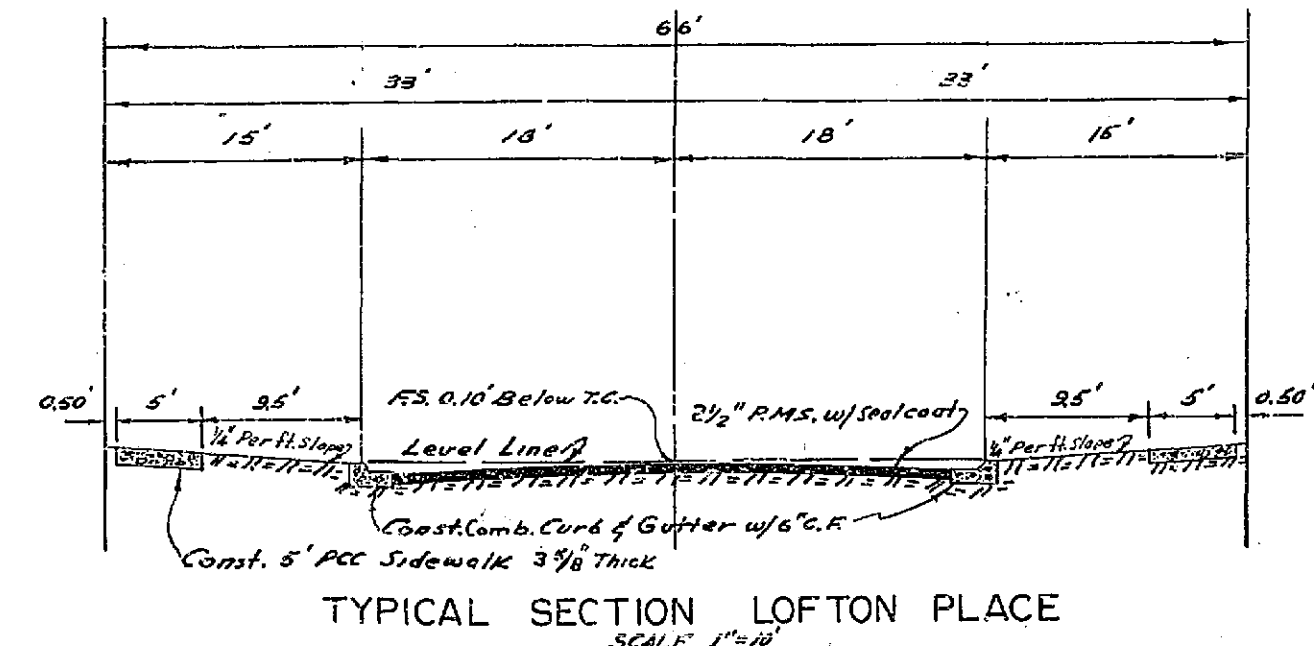
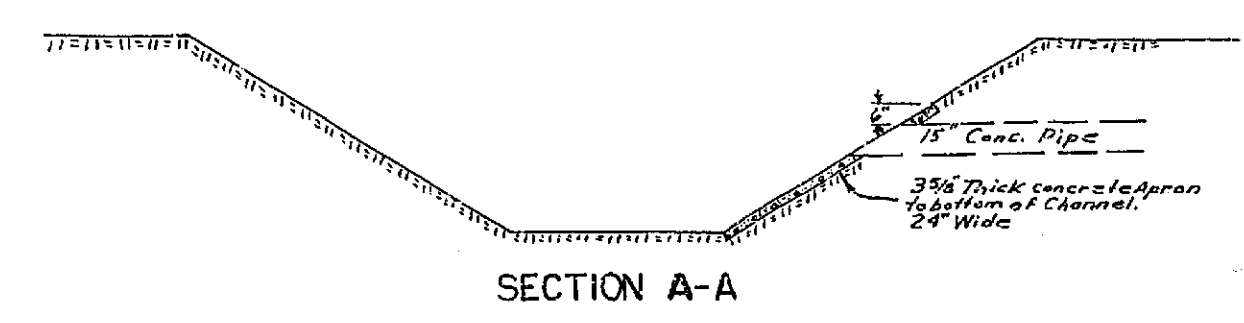
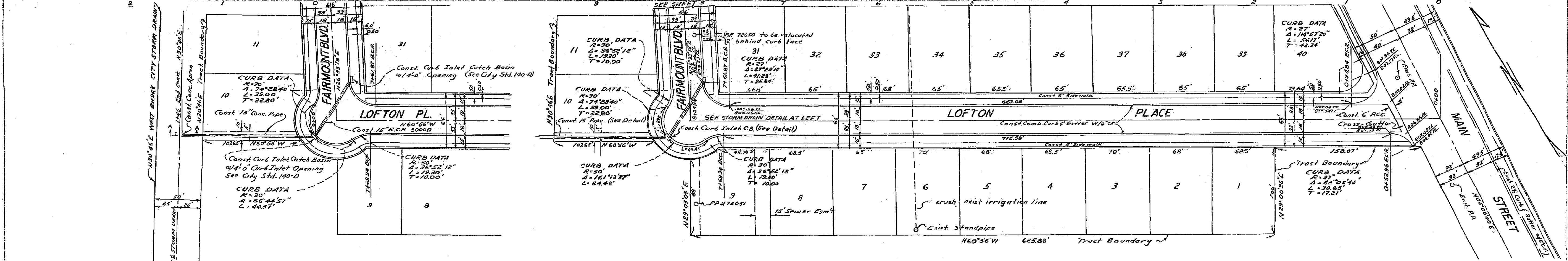
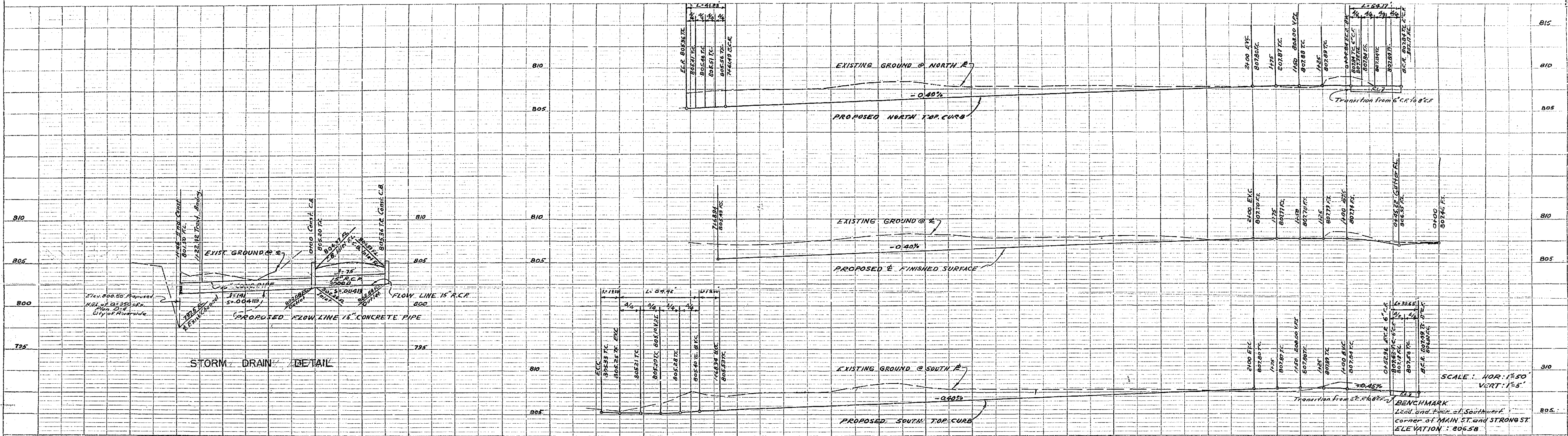
APPROVED BY *[Signature]*
Director of Public Works

NO. R-176
DATE 2-13-58 SHEET 1 OF 2



PROPERTY OF
CITY OF RIVERSIDE
DEPT. OF PUBLIC WORKS
ENGINEERING DIVISION

PROPERTY OF
CITY OF RIVERSIDE
DEPT. OF PUBLIC WORKS
ENGINEERING DIVISION



RIVERSIDE ENGINEERING CO. INC.
RIVERSIDE, CALIFORNIA
APPROVED BY: *George O. Cowley* DATE 2-6-58

CITY OF RIVERSIDE, CALIFORNIA
DEPARTMENT OF PUBLIC WORKS

STREET PLAN & PROFILE
LOFTON PLACE 0+00 TO 8+00
STORM DRAIN 0+00 TO 1+45

SUNCREST ESTATES

HORIZ. SCALE 1/250 VERT. SCALE 1/5'

APPROVED BY: *Samuel* NO. R-176
Director of Public Works

DATE 2-13-58 SHEET 2 OF 3

PROPERTY OF
CITY OF RIVERSIDE
DEPT. OF PUBLIC WORKS
ENGINEERING DIVISION

PROPERTY OF
CITY OF RIVERSIDE
DEPT. OF PUBLIC WORKS
ENGINEERING DIVISION

