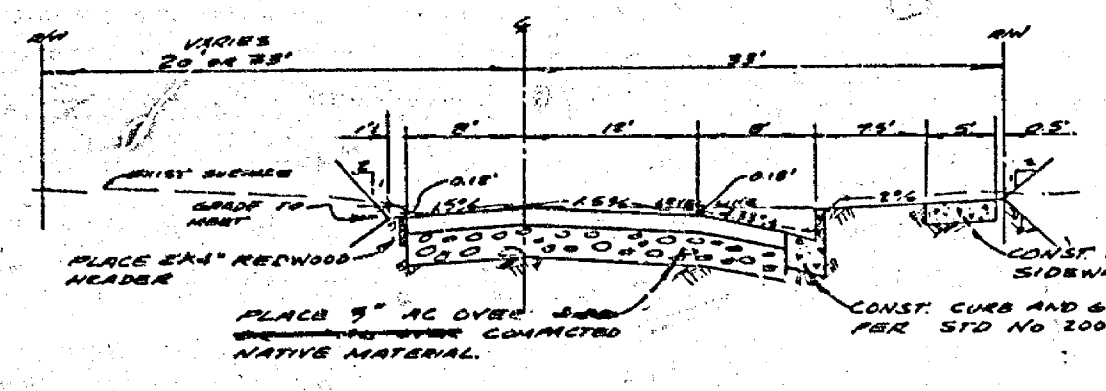
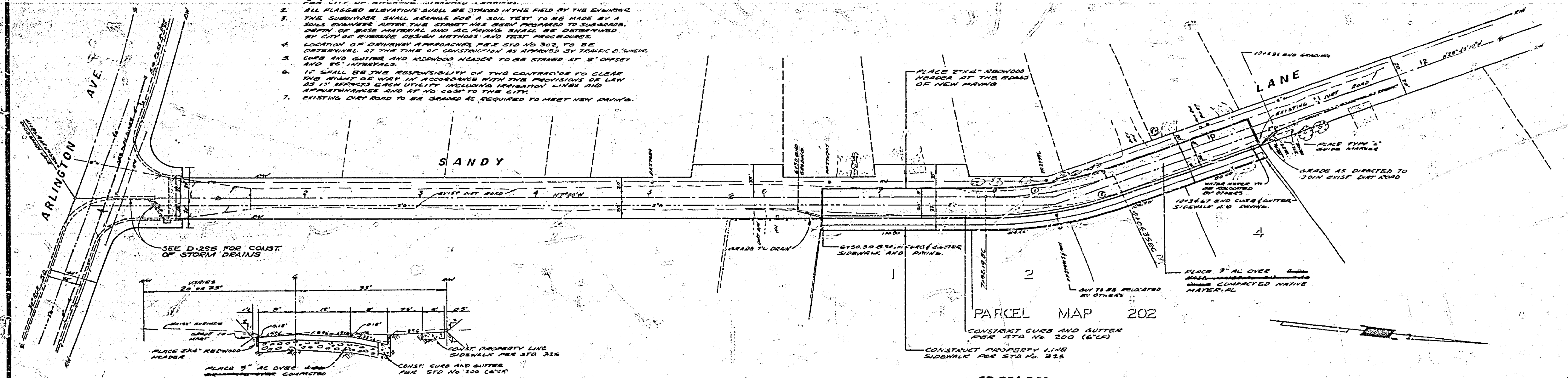


- GENERAL NOTES**
- CONSTRUCTION SHALL BE IN ACCORDANCE WITH THE STANDARD SPECIFICATIONS FOR PUBLIC WORKS CONSTRUCTION, 1973 EDITION AND THE 2011 AND 2012 AMENDMENTS THEREON.
 - ALL PLACED ELEVATIONS SHALL BE STRIKED IN THE FIELD BY THE ENGINEER.
 - THE SUBGRADE SHALL BE PREPARED FOR A SOIL TEST TO BE MADE BY A SOIL ENGINEER. AFTER THE STREET HAS BEEN PREPARED TO SUBGRADE, DEPTH OF BASE MATERIAL AND AC FINISH SHALL BE DETERMINED BY CITY OF RIVERSIDE DESIGN METHODS AND TEST PROCEDURES.
 - LOCATION OF DRIVEWAY APPROACHES, PER STD NO 302, TO BE DETERMINED AT THE TIME OF CONSTRUCTION AS APPROVED BY TRAFFIC ENGINEER.
 - CURBS AND GUTTERS AND ALIGNED HEADS TO BE STRIKED AT 3' OFFSET AND 5' INTERVALS.
 - IT SHALL BE THE RESPONSIBILITY OF THE CONTRACTOR TO CLEAR THE RIGHT OF WAY IN ACCORDANCE WITH THE PROVISIONS OF LAW AS IT APPLIES WHEN UTILITIES INCLUDING IRRIGATION LINES AND FURNISHMENTS AND AT NO COST TO THE CITY.
 - EXISTING DIRT ROAD TO BE GRADED AS REQUIRED TO MEET NEW FINISH.



TYPICAL SECTION SANDY LANE
711.6 NO SCALE

NO.	LENGTH	WIDTH	AREA	PERCENT
1	250'	21'4\"/>		

ALBERT A. WEBB ASSOCIATES CIVIL ENGINEERS RIVERSIDE, CALIFORNIA		CITY OF RIVERSIDE, CALIFORNIA PUBLIC WORKS DEPARTMENT		ACCOUNT NO. R-1800
APPROVED BY: <i>[Signature]</i> R.E. No. <i>[Blank]</i>	DATE: <i>[Blank]</i>	APPROVED BY: <i>[Signature]</i> DIRECTOR OF PUBLIC WORKS	DATE: <i>11-14-14</i>	SHEET 1 OF 1
W&J 74-221 FOR A11 McCullom P.S. 1035		DESIGNED BY: <i>[Blank]</i> DRAWN BY: <i>[Blank]</i> CHECKED BY: <i>[Blank]</i>		SCALE: Horiz. 1" = 40' Vert. 1" = 4' 74-223-A