

CURB CURVE DATA			
Sta.	R	L	T
1	30'00"	25.00'	28.75'
2	30'00"	27.00'	31.50'
3	30'00"	27.00'	27.00'

ALBERT A. WEBB ASSOCIATES
 CIVIL ENGINEERS
 RIVERSIDE, CALIFORNIA
 APPROVED BY: [Signature] DATE: 9-17-75
 R.E. No. 11222

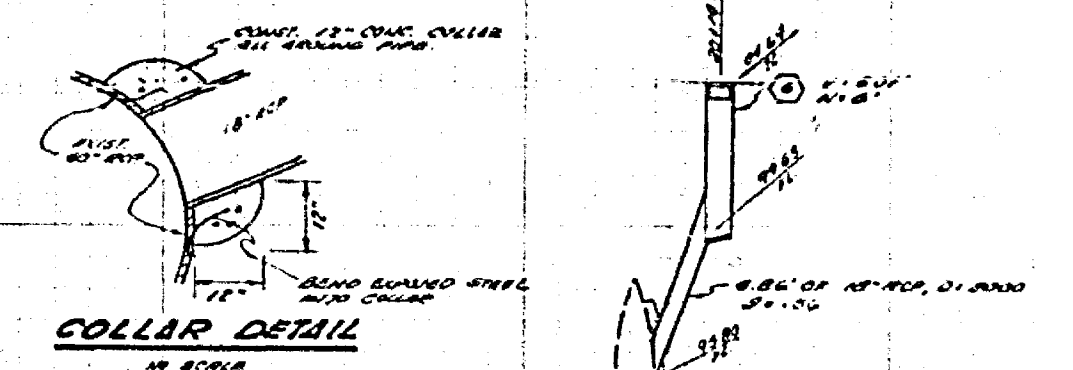
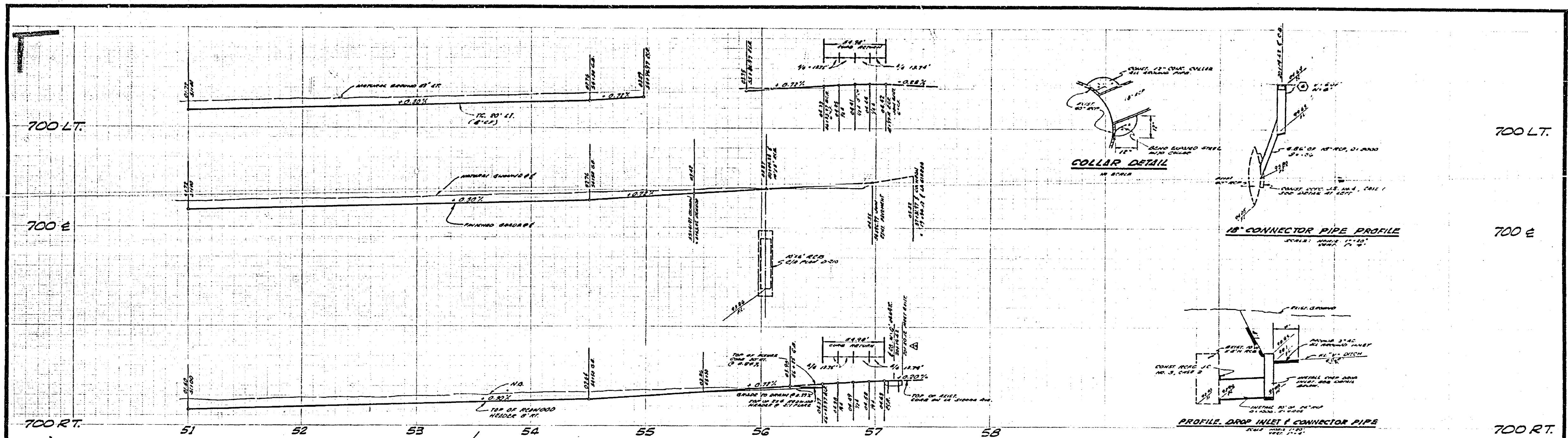
DESIGNED BY: [Signature] DRAWN BY: [Signature] CHECKED BY: [Signature]
 W.D. 75-107 FROM AMERICAN CONSULTING ENGINEERS

CITY OF RIVERSIDE, CALIFORNIA
 PUBLIC WORKS DEPARTMENT
 APPROVED BY: [Signature] DATE: 9-17-75
 SUPERVISOR OF PUBLIC WORKS

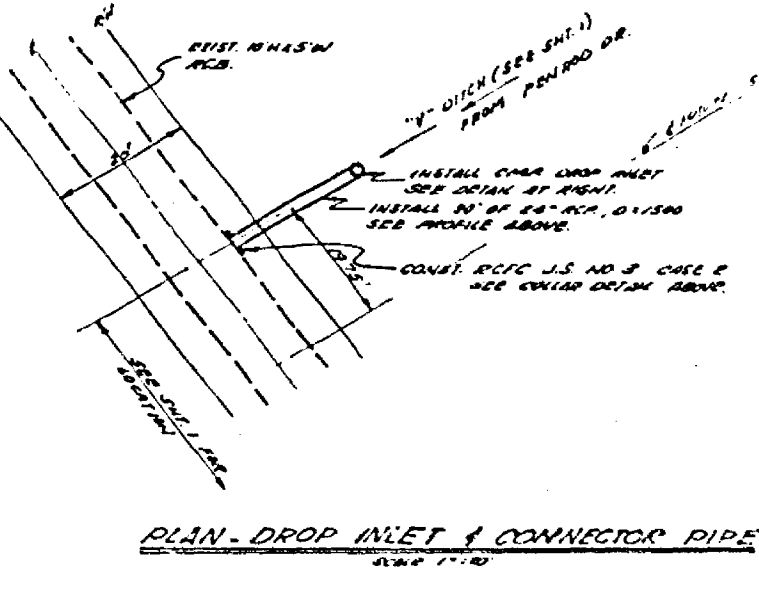
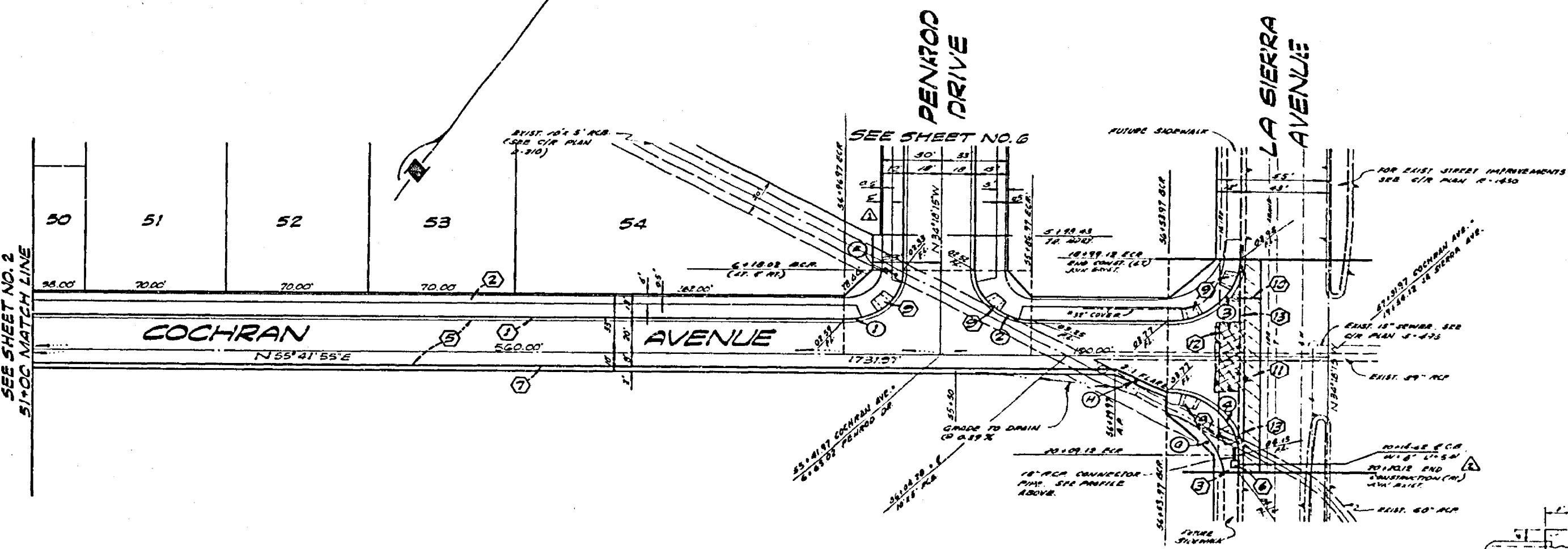
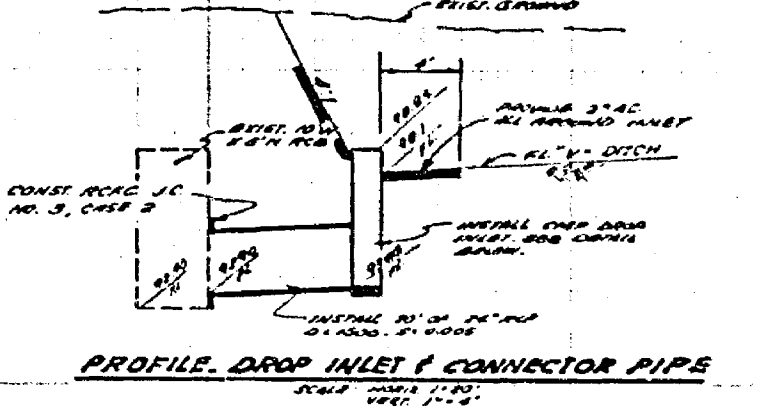
STREET PLAN AND PROFILE
 TRACT NO. 5677-1
 COCHRAN AVENUE

ACCOUNT NO. 75-107
 DRAWING NUMBER
R-1828
 SHEET 2 OF 6
 75-107-A

NOTE: MATCH AREA
 TO SHEET 75-107-A
 AT 700' ELEVATION
 AT 700' ELEVATION
 AT 700' ELEVATION



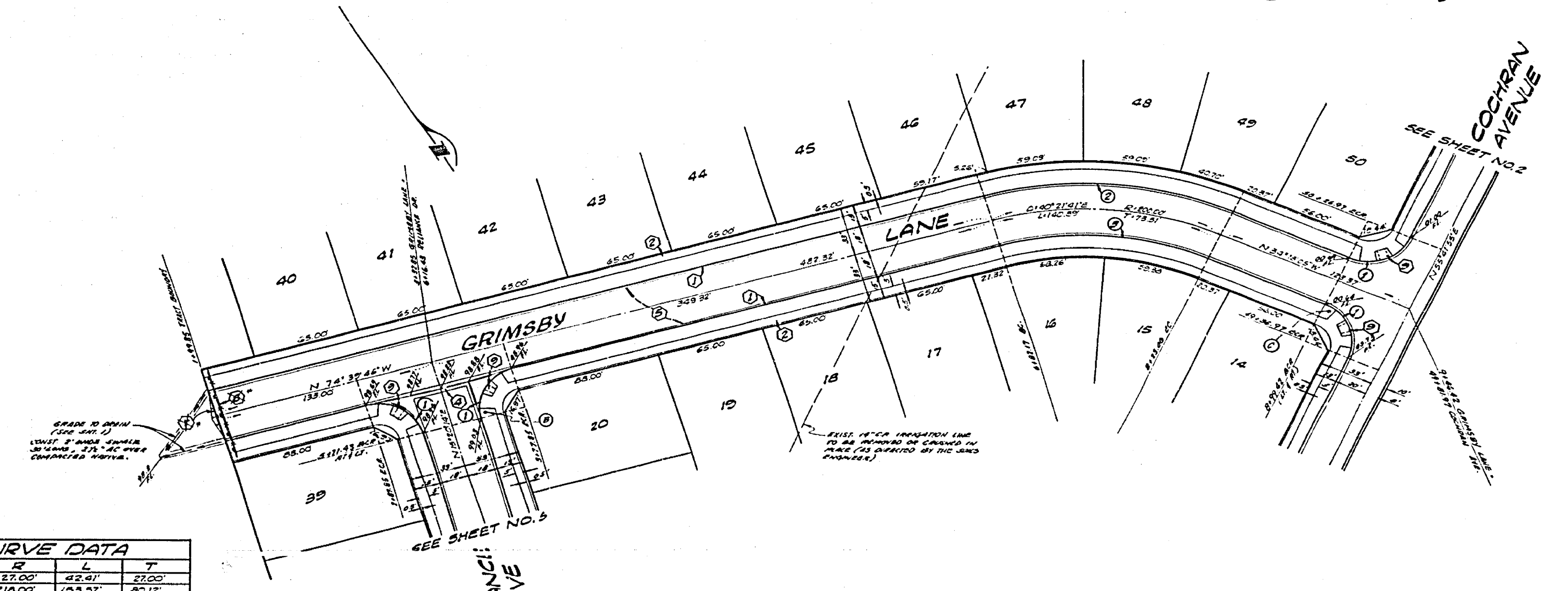
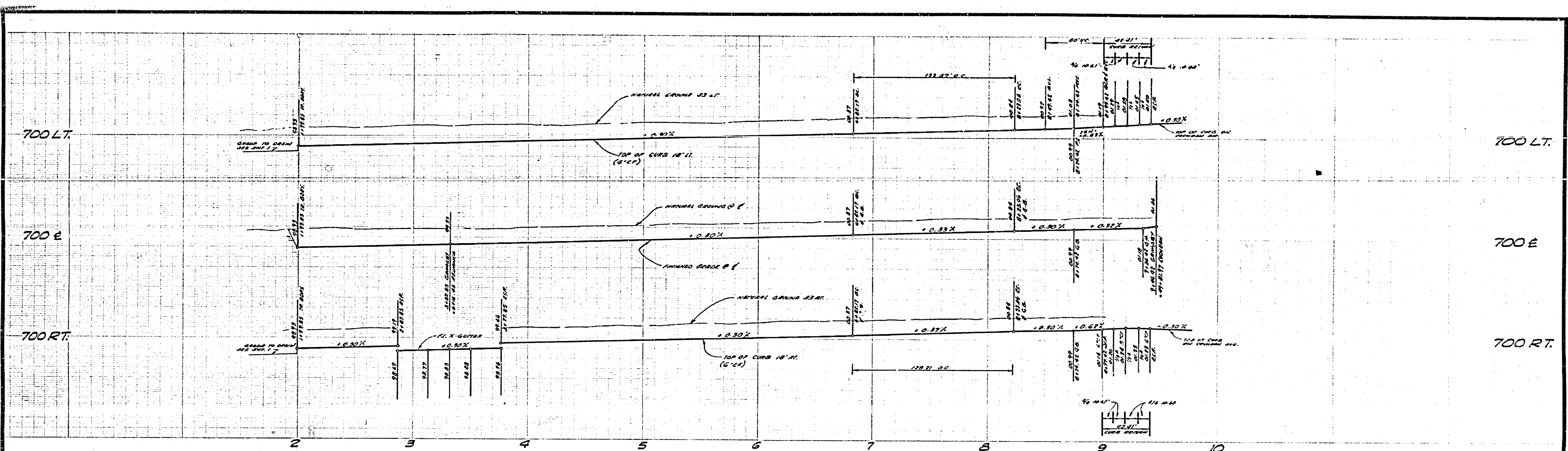
18" CONNECTOR PIPE PROFILE



CURB CURVE DATA

NO.	D	R	L	T
1	20°00'10"	25.00	42.41	27.00
2	28°53'30"	27.00	42.91	27.00
3	20°00'10"	38.00	54.30	35.00
4	29°02'30"	25.00	44.90	25.00

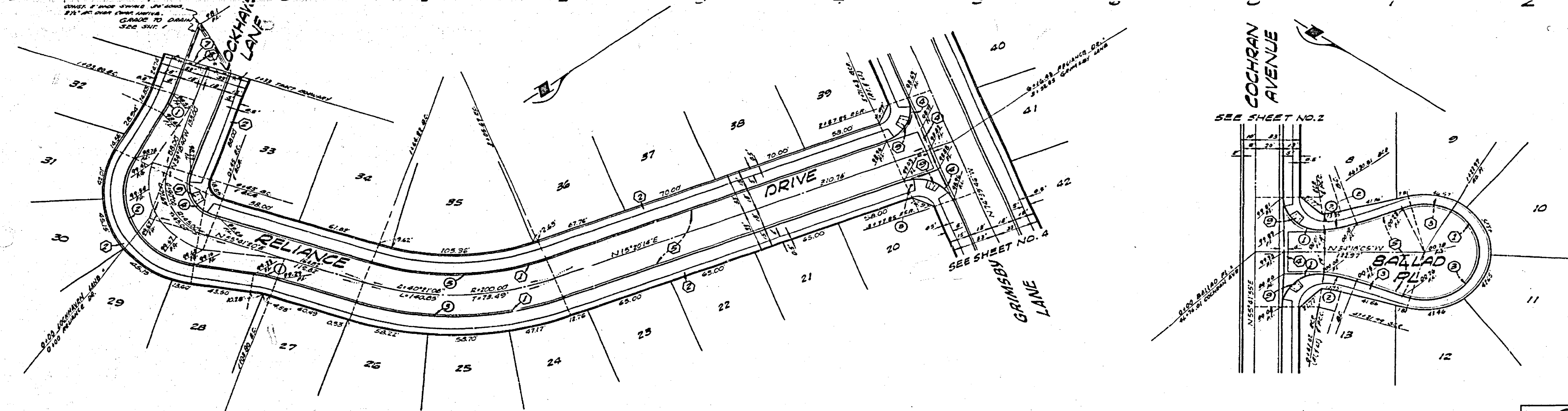
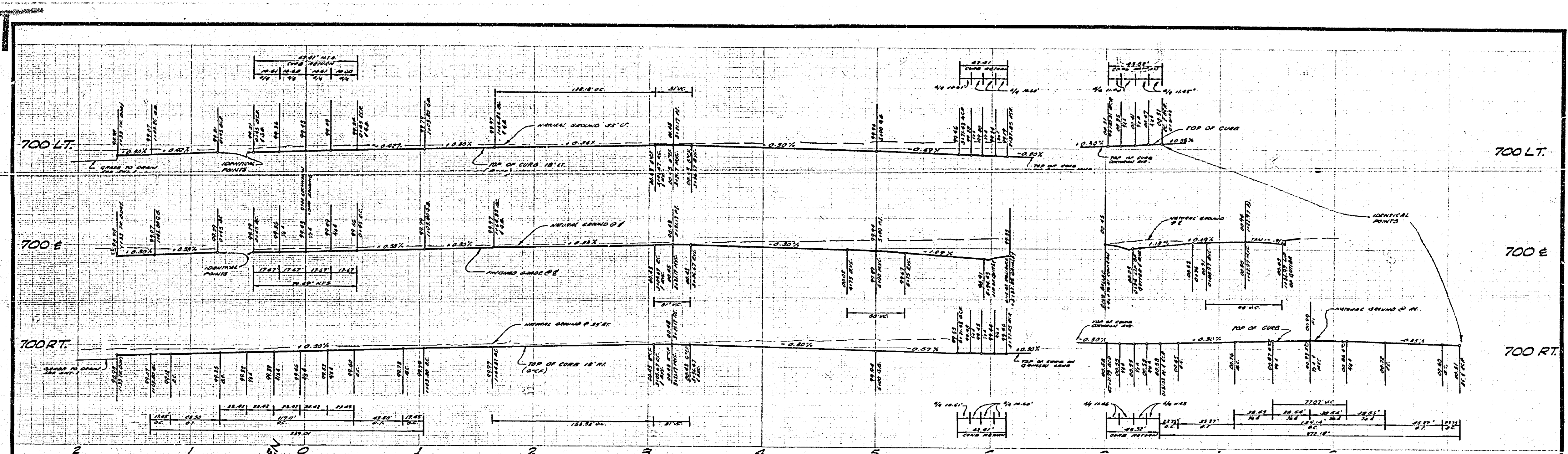
ALBERT A. WEBB ASSOCIATES CIVIL ENGINEERS RIVERSIDE, CALIFORNIA		CITY OF RIVERSIDE, CALIFORNIA PUBLIC WORKS DEPARTMENT		STREET PLAN AND PROFILE TRACT NO. 5677-1 COCHRAN AVENUE		ACCOUNT NO. 78-107 DRAWING NUMBER R-1828 SHEET 3 OF 6 78-107-A	
APPROVED BY: <i>[Signature]</i> DATE: 8-2-57 R.E. No. 1038		APPROVED BY: <i>[Signature]</i> DIRECTOR OF PUBLIC WORKS DATE: 9-12-57		SCALE: HORIZ. 1"=40', VERT. 1"=4'			
W.D. 78-107 FOR 1/4" COCHRAN DEV. CO. P.R. 1022		DESIGNED BY: R.W. DRAWN BY: S.W. CHECKED BY: S.W.					



CURB CURVE DATA				
Abt	D	R	T	
1	30°00'00"	27.00'	42.91'	27.00'
2	40°21'41"	318.00'	188.97'	85.12'
3	40°21'41"	188.00'	128.21'	66.59'

ALBERT A. WEBB ASSOCIATES CIVIL ENGINEERS RIVERSIDE, CALIFORNIA APPROVED BY: <i>[Signature]</i> DATE: 9-12-77 R.E. No. 1828E 7075-107 FOR MARLBOROUGH DEV. CO. P.B. 1022	DESIGNED BY: <i>[Signature]</i> DRAWN BY: <i>[Signature]</i> CHECKED BY: <i>[Signature]</i>	CITY OF RIVERSIDE, CALIFORNIA PUBLIC WORKS DEPARTMENT	STREET PLAN AND PROFILE TRACT NO. 5677-1 GRIMSBY LANE	ACCOUNT NO. 75-107 DRAWING NUMBER R-1828 SHEET 2 OF 6 75-107-A
		APPROVED BY: <i>[Signature]</i> DATE: 9-12-77 TRAFFIC ENGINEER DIRECTOR OF PUBLIC WORKS	SCALE: HORIZ. 1"=40', VERT. 1"=4'	

REVISIONS
 1. AS BUILT A 75-107



CURB CURVE DATA

No.	A	R	L	T
1	16°00'00"	100.00'	17.45'	8.75'
2	12°00'00"	81.00'	11.71'	6.12'
3	40°11'04"	214.00'	158.83'	50.10'
4	80°00'00"	27.00'	42.41'	27.00'
5	40°11'04"	181.00'	128.18'	46.88'

CURB CURVE DATA

Sta	Q	R	L	T
1	98°53'01"	87.00'	46.44'	21.97'
2	11°50'08"	115.00'	63.78'	11.91'
3	200°46'54"	40.00'	139.14'	—

ALBERT A. WEBB ASSOCIATES
 CIVIL ENGINEERS
 RIVERSIDE, CALIFORNIA
 APPROVED BY: *[Signature]* DATE: 6-27-72
 R.E. No. 18228

NO.	REVISIONS	DATE

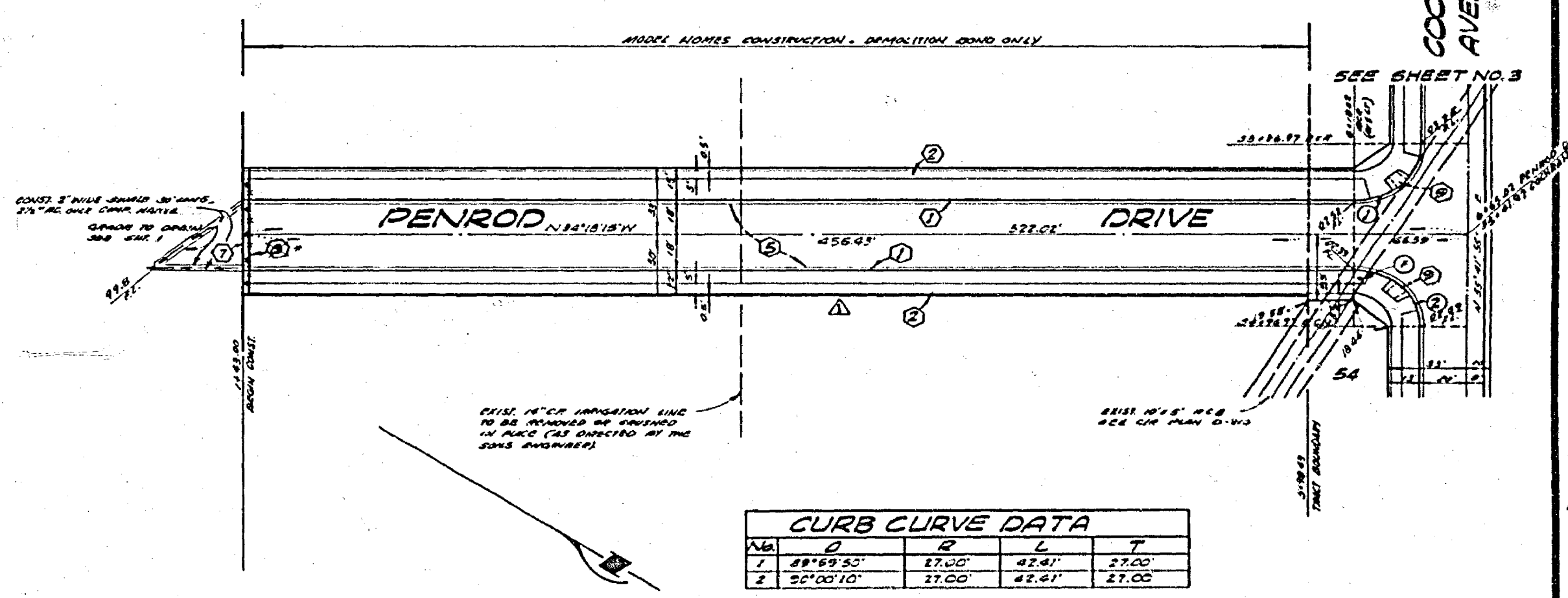
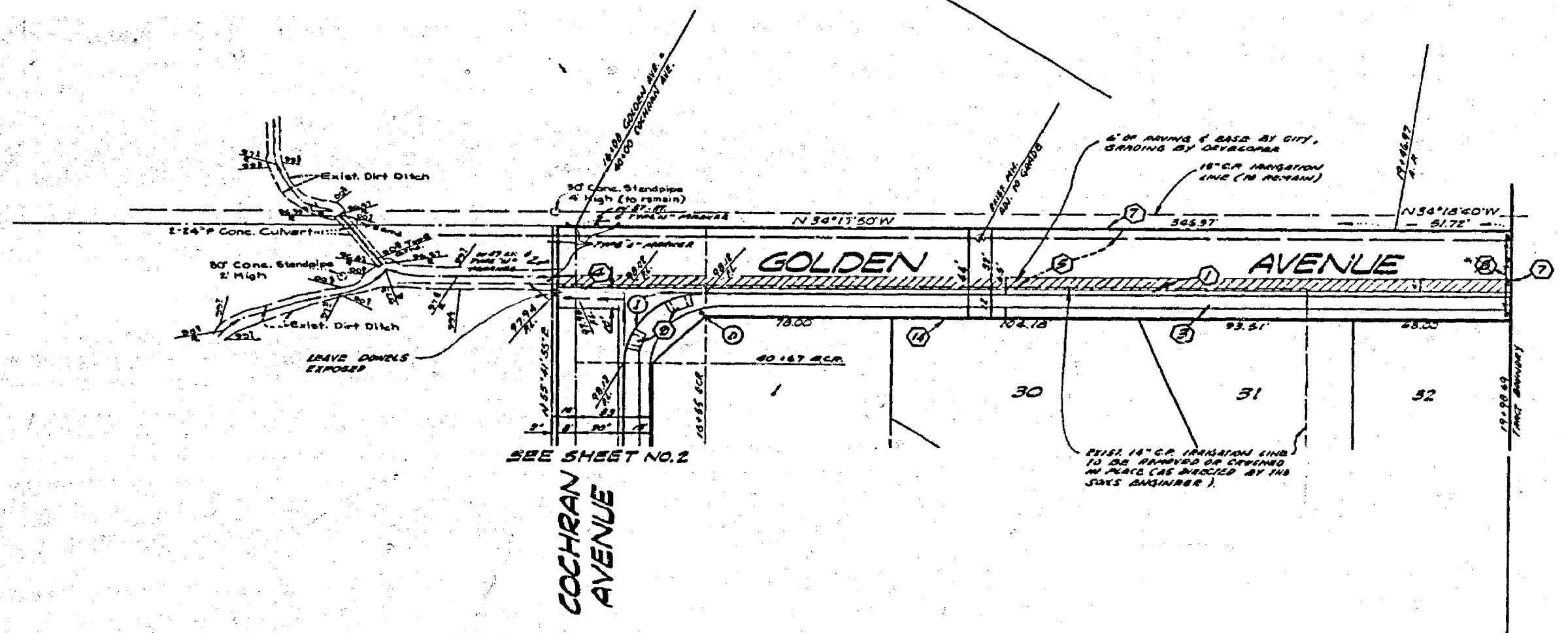
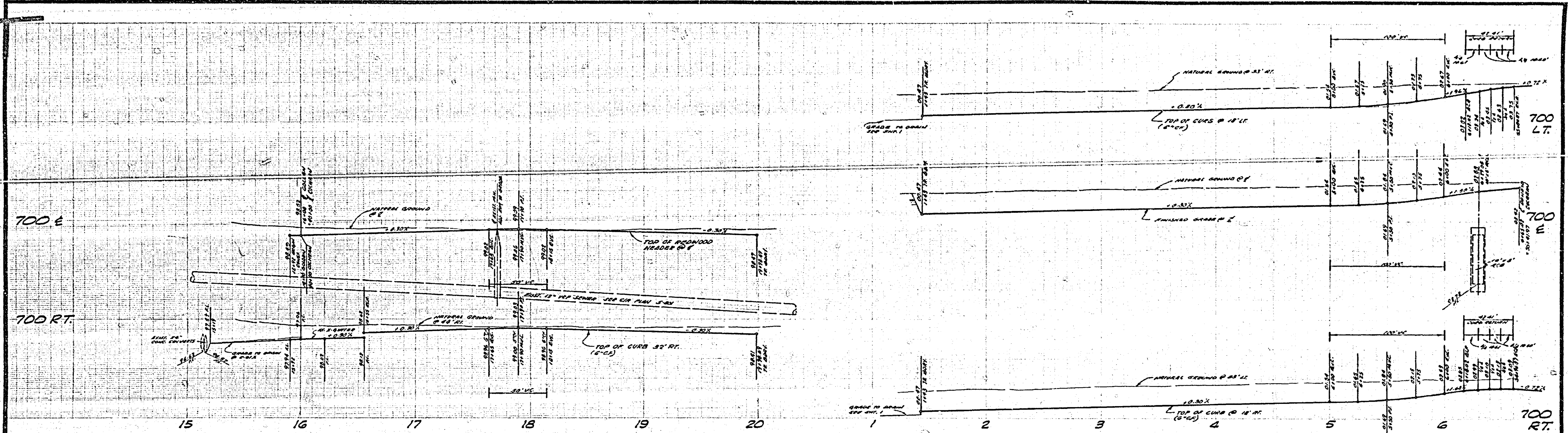
CITY OF RIVERSIDE, CALIFORNIA
 PUBLIC WORKS DEPARTMENT
 APPROVED BY: *[Signature]*
 TRAFFIC ENGINEER
 DATE: 9-11-72

STREET PLAN AND PROFILE
 TRACT NO. 5677-1
 RELIANCE DR.
 BALLAD PLACE

ACCOUNT NO. 75-107
 DRAWING NUMBER
R-1828
 SHEET **5** OF **9**
 75-107-A

*AS BUILT 8 7/8 1/2"

SCALE: HORIZ. 1"=40' VERT. 1"=4'



No.	R	L	T
1	30.00'	33.00'	35.00'

No.	R	L	T
1	30.00'	33.00'	35.00'

ALBERT A. WEBB ASSOCIATES
 CIVIL ENGINEERS
 RIVERSIDE, CALIFORNIA
 APPROVED BY: *[Signature]* DATE: 5-27-75
 R.E. No. 12288
 W.D. 75-107 FOR MARLBOROUGH CIV. CO. P.B. 107

CITY OF RIVERSIDE, CALIFORNIA
 PUBLIC WORKS DEPARTMENT
 APPROVED BY: *[Signature]*
 PRINCIPAL ENGINEER
 DATE: 9-1-75

STREET PLAN AND PROFILE
 TRACT NO. 5677-1
 GOLDEN AVE.
 PENROD DR.
 SCALE: HORIZ. 1"=40' VERT. 1"=4'

ACCOUNT NO. 75-107
 DRAWING NUMBER
 R-1828
 SHEET 6 OF 8
 75-107-A